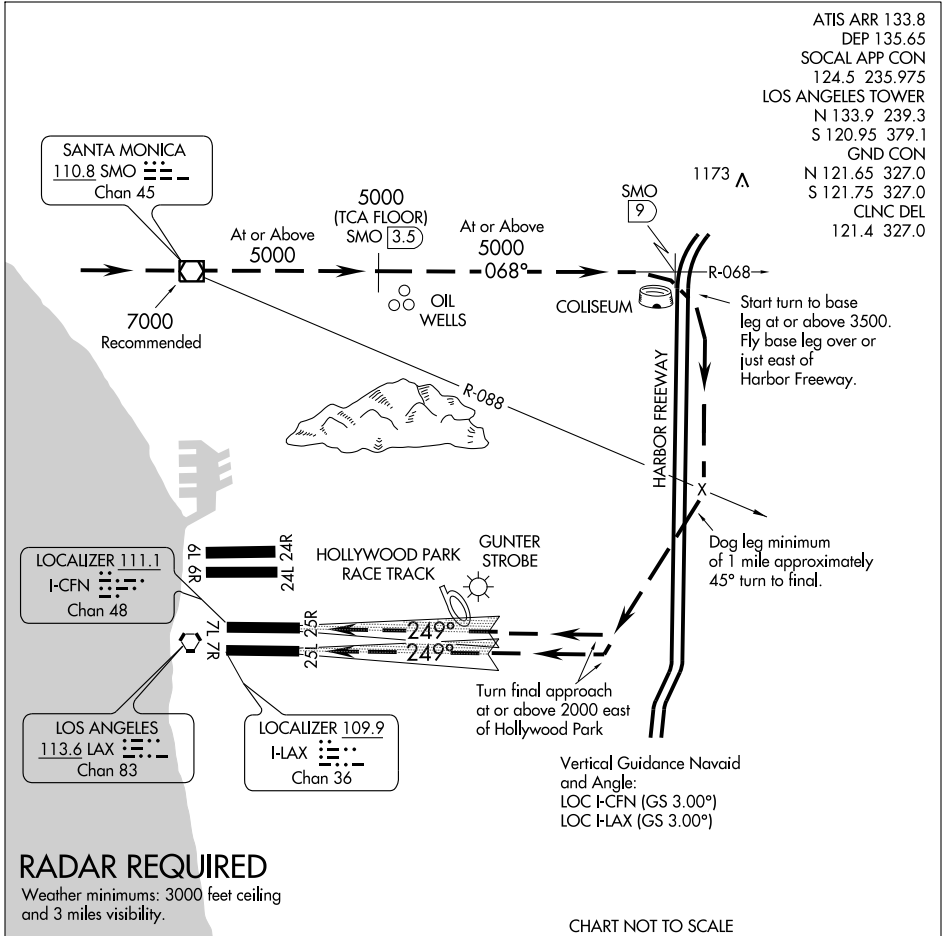


# HARBOR VISUAL RWY 25L/R

LOS ANGELES INTL (LAX)  
LOS ANGELES, CALIFORNIA

ATIS ARR 133.8  
 DEP 135.65  
 SOCIAL APP CON  
 124.5 235.975  
 LOS ANGELES TOWER  
 N 133.9 239.3  
 S 120.95 379.1  
 GND CON  
 N 121.65 327.0  
 S 121.75 327.0  
 CLNC DEL  
 121.4 327.0



SW-3, 19 NOV 2009 to 17 DEC 2009

SW-3, 19 NOV 2009 to 17 DEC 2009

## RADAR REQUIRED

Weather minimums: 3000 feet ceiling and 3 miles visibility.

CHART NOT TO SCALE

## HARBOR VISUAL APPROACH

When visual approaches to Runways 25L/R are in progress, clearances to aircraft from the north and northwest will be given utilizing the following phraseology:

"(IDENT) CLEARED FOR HARBOR VISUAL RUNWAY 25 LEFT/RIGHT APPROACH."

A descent profile of approximately 3° starting at 7000 over SMO VOR/DME may be made with reference to the minimum altitudes above.

# HARBOR VISUAL RWY 25L/R

LOS ANGELES, CALIFORNIA  
LOS ANGELES INTL (LAX)