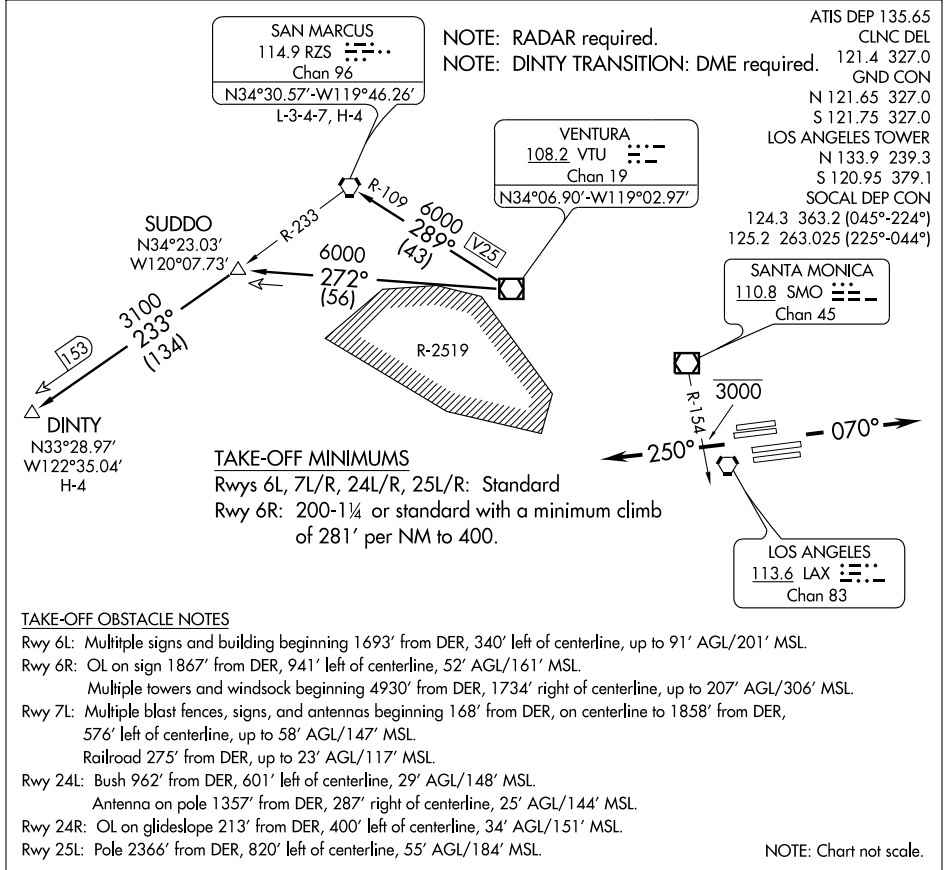


VENTURA FIVE DEPARTURE

SL-237 (FAA)

LOS ANGELES INTL (LAX)
LOS ANGELES, CALIFORNIA



SW-3, 19 NOV 2009 to 17 DEC 2009

SW-3, 19 NOV 2009 to 17 DEC 2009

DEPARTURE ROUTE DESCRIPTION

TAKE-OFF RUNWAYS 6L/R, 7L/R: Climb via heading 070° for vectors to VTU VOR/DME. Thence. . . .

TAKE-OFF RUNWAYS 24L/R, 25L/R: Climb via heading 250° for vectors to VTU VOR/DME, cross SMO R-154 at or below 3000. Thence. . . .

. . . .via (assigned transition) or (assigned route). Expect further clearance to filed flight level three minutes after departure.

LOST COMMUNICATIONS: If not in contact with Departure Control within five minutes after departure, climb to FL230 or filed altitude, whichever is lower. Aircraft filing FL240 or above climb to filed altitude ten minutes after departure.

DINTY TRANSITION (VTU5.DINTY): From over VTU VOR/DME via VTU R-272 and RZS R-233 to DINTY INT.

SAN MARCUS TRANSITION (VTU5.RZS): From over VTU VOR/DME via VTU R-289 and RZS R-109 to RZS VORTAC.

VENTURA FIVE DEPARTURE