

(SEBBY4.DAG) 09239

SEBBY FOUR DEPARTURE

SL-237 (FAA)

LOS ANGELES INTL (LAX)
LOS ANGELES, CALIFORNIA

ATIS DEP 135.65
 CLNC DEL
 121.4 327.0
 GND CON
 N 121.65 327.0
 S 121.75 327.0
 LOS ANGELES TOWER
 N 133.9 239.3
 S 120.95 379.1
 SOCAL DEP CON
 124.3 363.2 (045°-224°)
 125.2 263.025 (225°-044°)

TAKE-OFF MINIMUMS

Rwys 24L/R, 25L/R: Standard
 Rwys 6L/R, 7L/R: NA- Air Traffic.

DAGGETT
 113.2 DAG $\text{---}\text{---}\text{---}$
 Chan 79
 N34°57.75'-W116°34.69'
 L-7, H-4

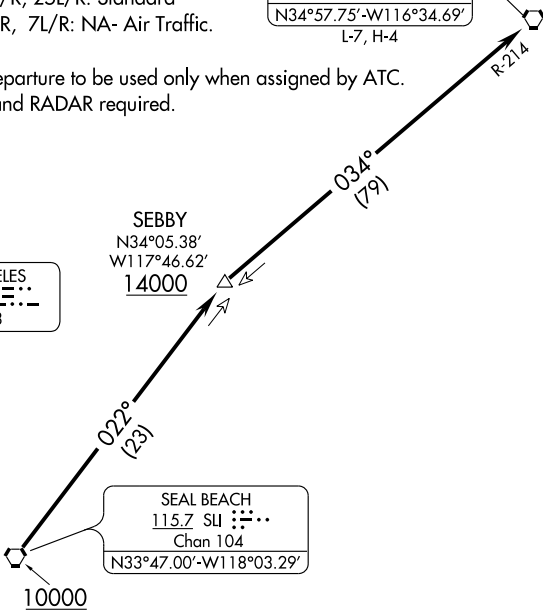
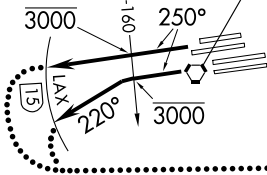
NOTE: This departure to be used only when assigned by ATC.
 NOTE: DME and RADAR required.

SANTA MONICA
 110.8 SMO $\text{---}\text{---}\text{---}$
 Chan 45

LOS ANGELES
 113.6 LAX $\text{---}\text{---}\text{---}$
 Chan 83

SEBBY
 N34°05.38'
 W117°46.62'
 14000

SEAL BEACH
 115.7 SLI $\text{---}\text{---}\text{---}$
 Chan 104
 N33°47.00'-W118°03.29'



TAKE-OFF OBSTACLE NOTES

- Rwy 24L: Bush 962' from DER, 601' left of centerline, 29' AGL/148' MSL.
 Antenna on pole 1357' from DER, 287' right of centerline, 25' AGL/144' MSL.
- Rwy 24R: OL on glideslope 213' from DER, 400' left of centerline, 34' AGL/151' MSL.
- Rwy 25L: Pole 2366' from DER, 820' left of centerline, 55' AGL/184' MSL.

NOTE: Chart not to scale.

DEPARTURE ROUTE DESCRIPTION

TAKE-OFF RUNWAYS 24L/R: Climb via heading 250°, cross SMO R-160 at or below 3000, Thence....

TAKE-OFF RUNWAYS 25L/R: Climb via heading 250°, cross SMO R-160 at or below 3000, then turn left via heading 220°, Thence....

...via radar vectors to cross SLI VORTAC at or above 10000, then via SLI R-022 to cross SEBBY at or above 14000, then turn right via DAG R-214 to DAG VORTAC, expect further clearance to filed flight level three minutes after departure.

LOST COMMUNICATIONS: If not in contact with departure control by 15 DME west of LAX VORTAC, turn left direct SLI VORTAC and proceed on assigned route, climb to FL230 or filed altitude whichever is lower. Aircraft filing FL240 or above climb to filed altitude ten minutes after departure.

SEBBY FOUR DEPARTURE

(SEBBY4.DAG) 09239

LOS ANGELES, CALIFORNIA
LOS ANGELES INTL (LAX)

SW-3, 19 NOV 2009 to 17 DEC 2009

SW-3, 19 NOV 2009 to 17 DEC 2009