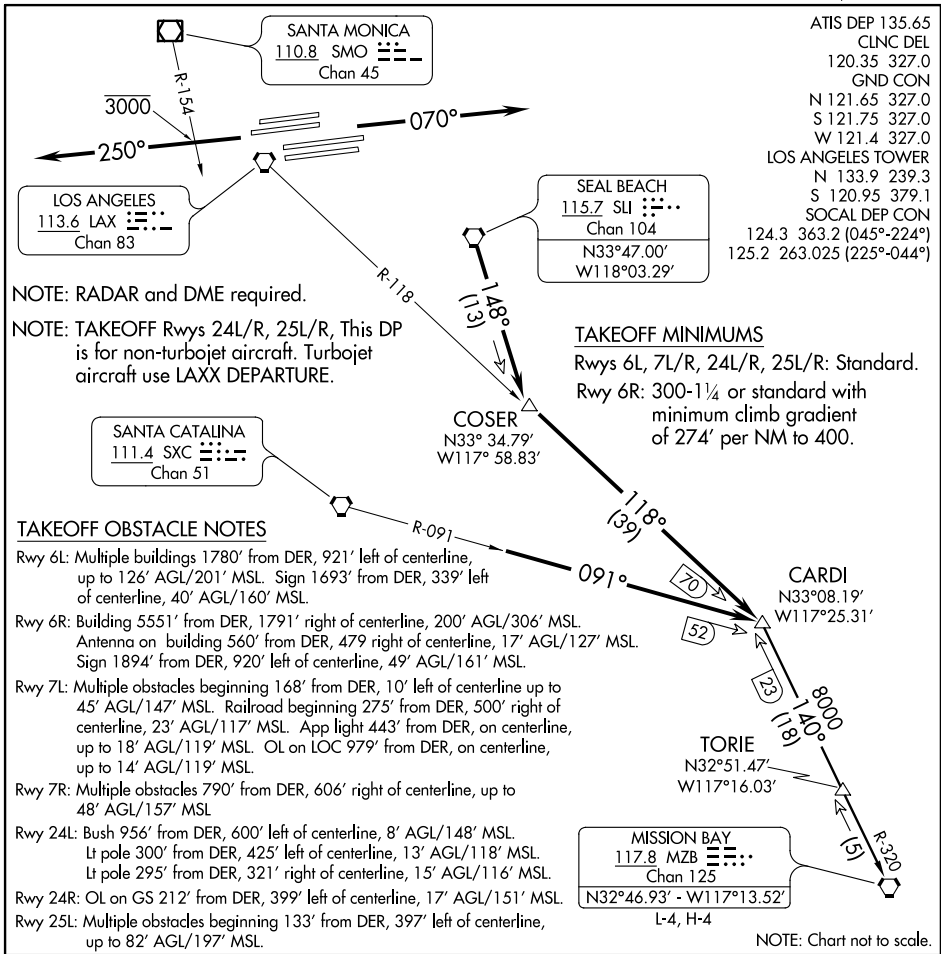


SAN DIEGO SIX DEPARTURE

SL-237 (FAA)

LOS ANGELES INTL (LAX)
LOS ANGELES, CALIFORNIA



SW-3, 08 JAN 2015 to 05 FEB 2015

SW-3, 08 JAN 2015 to 05 FEB 2015

DEPARTURE ROUTE DESCRIPTION

TAKEOFF RUNWAYS 6L/R, 7L/R: Climb on heading 070° for vector to SLI VORTAC, then on SLI R-148 to COSER DME fix then on LAX R-118 to CARDI INT. Thence....

TAKEOFF RUNWAYS 24L/R, 25L/R: Climb on heading 250° to cross SMO R-154 at or below 3000, then via RADAR vector to join SXC R-091 to CARDI INT. Thence....

....via (assigned transition) or (assigned route). All aircraft expect further clearance to filed flight level three minutes after departure.

LOST COMMUNICATIONS: If not in contact with departure control within 5 minutes after departure, climb to FL230 or filed altitude whichever is lower. Aircraft filing FL240 or above climb to filed altitude ten minutes after departure.

MISSION BAY TRANSITION (SNGO6.MZB): From over CARDI INT via MZB R-320 to MZB VORTAC.

SAN DIEGO SIX DEPARTURE