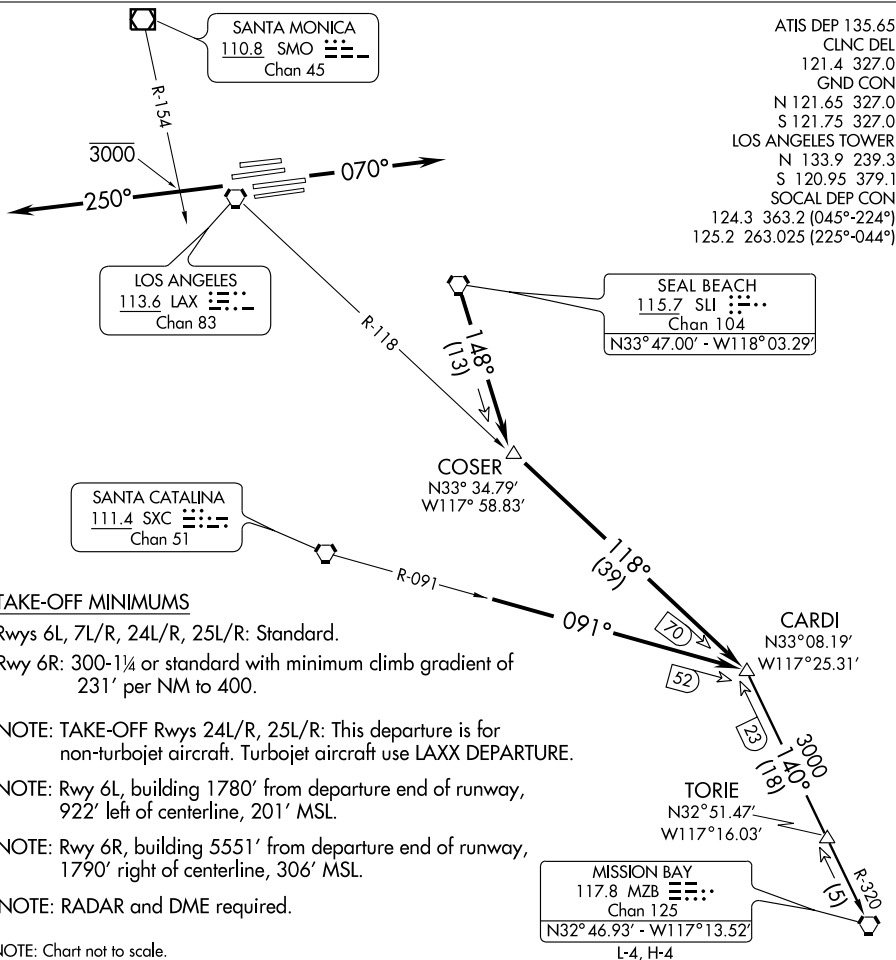


SAN DIEGO FIVE DEPARTURE

SL-237 (FAA)

LOS ANGELES INTL (LAX)

LOS ANGELES, CALIFORNIA



ATIS DEP 135.65
 CLNC DEL 121.4 327.0
 GND CON N 121.65 327.0
 S 121.75 327.0
 LOS ANGELES TOWER N 133.9 239.3
 S 120.95 379.1
 SOCAL DEP CON 124.3 363.2 (045°-224°)
 125.2 263.025 (225°-044°)

SW-3, 19 NOV 2009 to 17 DEC 2009

SW-3, 19 NOV 2009 to 17 DEC 2009

TAKE-OFF MINIMUMS

Rwys 6L, 7L/R, 24L/R, 25L/R: Standard.
 Rwy 6R: 300-1¼ or standard with minimum climb gradient of 231' per NM to 400.

NOTE: TAKE-OFF Rwys 24L/R, 25L/R: This departure is for non-turbojet aircraft. Turbojet aircraft use LAXX DEPARTURE.

NOTE: Rwy 6L, building 1780' from departure end of runway, 922' left of centerline, 201' MSL.

NOTE: Rwy 6R, building 5551' from departure end of runway, 1790' right of centerline, 306' MSL.

NOTE: RADAR and DME required.

NOTE: Chart not to scale.

DEPARTURE ROUTE DESCRIPTION

TAKE-OFF RUNWAYS 6L/R, 7L/R: Climb via heading 070° for vector to SLI VORTAC, then via SLI R-148 to COSER DME fix then via LAX R-118 to CARDI INT. Thence...

TAKE-OFF RUNWAYS 24L/R, 25L/R: Climb via heading 250° to cross SMO R-154 at or below 3000, then via RADAR vector to join SXC R-091 to CARDI INT. Thence...

...via (assigned transition) or (assigned route). All aircraft expect further clearance to filed flight level three minutes after departure.

LOST COMMUNICATIONS: If not in contact with departure control within five minutes after departure, climb to FL230 or filed altitude whichever is lower. Aircraft filing FL240 or above climb to filed altitude ten minutes after departure.

MISSION BAY TRANSITION (SNGO5.MZY): From over CARDI INT via MZY R-320 to MZY VORTAC.

SAN DIEGO FIVE DEPARTURE