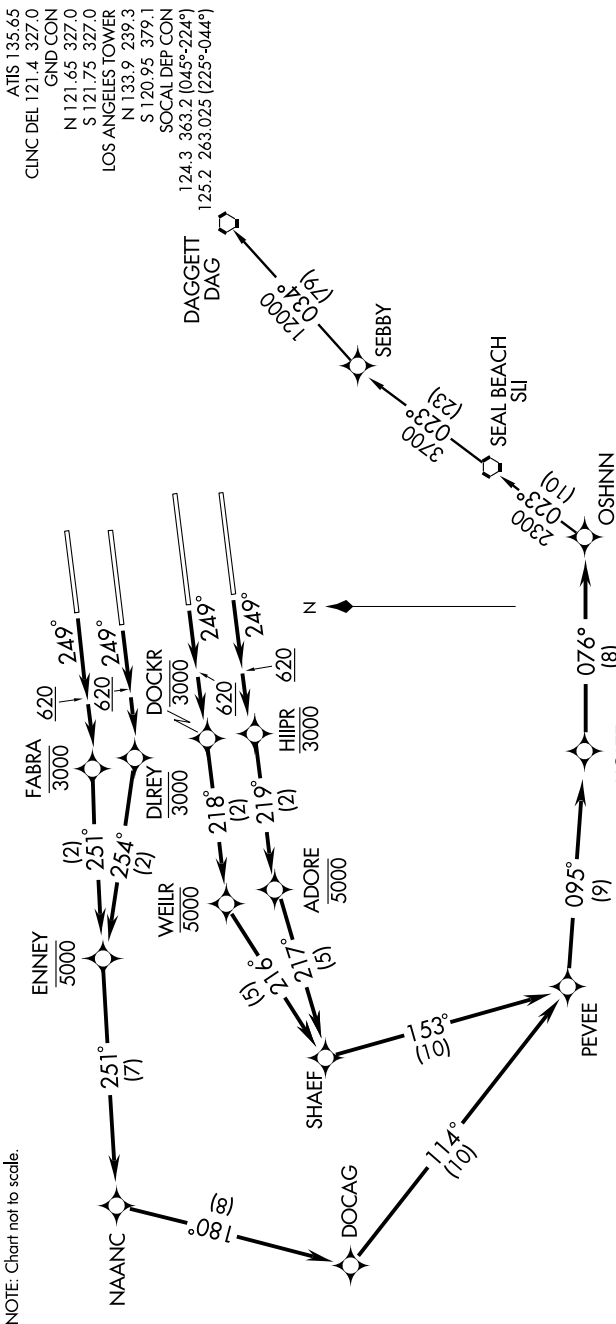


OSHNN THREE DEPARTURE (RNAV)

SW-3, 19 NOV 2009 to 17 DEC 2009



TAKE-OFF OBSTACLE NOTES

- Rwy 24L: Bush 957' from DER, 601' left of centerline, 29' AGL/148' MSL. Light pole 273' from DER, 547' left of centerline, 12' AGL/120' MSL. Light pole 301' from DER, 425' left of centerline, 10' AGL/118' MSL. Antenna on pole 1358' from DER, 287' right of centerline 25' AGL/144' MSL. Bush 240' feet from DER, 508' right of centerline, 10' AGL/116' MSL. Light pole 296' from DER, 321' right of centerline, 8' AGL/116' MSL. OL on glide slope 213' from DER, 400' left of centerline, 34' AGL/151' MSL.
- Rwy 24R: Pole 2366' from DER, 745' left of centerline, 55' AGL/184' MSL. T-tower 2800' from DER, 993' left of centerline, 82' AGL/192' MSL. Transmission tower 2856' from DER, 927' left of centerline, 82' AGL/192' MSL. Tree 2379' from DER, 778' left of centerline, 79' AGL/197' MSL. Bush 134' from DER, 397' left of centerline, 5' AGL/123' MSL.

TAKE-OFF MINIMUMS
Rwys 24L/R, 25L/R: Standard with minimum climb of 500' per NM to 620.
Rwys 6L/R, 7L/R: NA by ATC.

NOTE: 1. DME/DME/IRU or GPS Required.
2. RNAV 1.

NOTE: For non-GPS equipped aircraft departing Rwy 25R or 25L, SLL must be operational.

NOTE: Rwys 24L, 24R departure expect radar vector to PEVEE prior to NAAAC.

NOTE: RADAR Required.

(NARRATIVE ON FOLLOWING PAGE)