

LOOP FOUR DEPARTURE

SL-237 (FAA)

LOS ANGELES INTL (LAX)
LOS ANGELES, CALIFORNIA

ATIS DEP 135.65
 CLNC DEL 121.4 327.0
 GND CON N 121.65 327.0
 S 121.75 327.0
 LOS ANGELES TOWER N 133.9 239.3
 S 120.95 379.1
 SOCAL DEP CON 124.3 363.2 (045°-224°)
 125.2 263.025 (225°-044°)

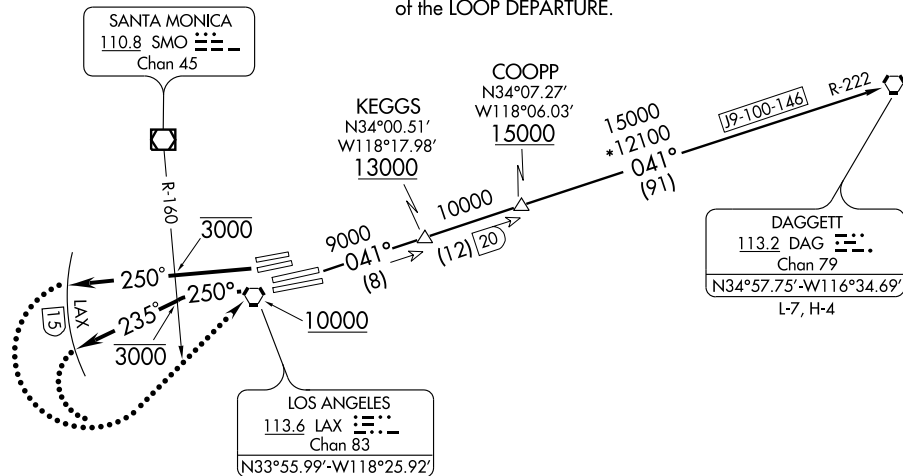
TAKE-OFF MINIMUMS

Rwys 24L/R, 25L/R: Standard.
 Rwys 6L/R, 7L/R: NA- Air Traffic.

NOTE: RADAR and DME Required.

NOTE: ATC minimum climb of 500' per NM to 10,000 required. If unable, use LAXX DEPARTURE.

NOTE: Use LAXX DEPARTURE, DAGGETT TRANSITION, during the period 2100-0700 local time in lieu of the LOOP DEPARTURE.



SW-3, 19 NOV 2009 to 17 DEC 2009

SW-3, 19 NOV 2009 to 17 DEC 2009

NOTE: Chart not to scale.

DEPARTURE ROUTE DESCRIPTION

TAKE-OFF RUNWAYS 24L/R: Climb via heading 250° to cross SMO R-160 at or below 3000, then via radar vectors to LAX VORTAC. Expect left turn direct LAX VORTAC. Thence....

TAKE-OFF RUNWAYS 25L/R: Climb via heading 250° to cross SMO R-160 at or below 3000, then turn left heading 235° for vector to LAX VORTAC. Expect left turn direct LAX VORTAC. Thence....

.... via (assigned transition) or (assigned route). All aircraft expect further clearance to filed flight level three minutes after departure.

LOST COMMUNICATIONS: If not in contact with Departure Control by 15 DME west of LAX VORTAC, turn left and proceed direct LAX VORTAC, climb to FL230 or filed altitude whichever is lower, and when able proceed via filed or assigned route/fix/transition. Aircraft filing FL240 or above climb to filed altitude ten minutes after departure.

DAGGETT TRANSITION (LOOP4.DAG): From over LAX VORTAC via LAX R-041 and DAG R-222 to DAG VORTAC.

LOOP FOUR DEPARTURE