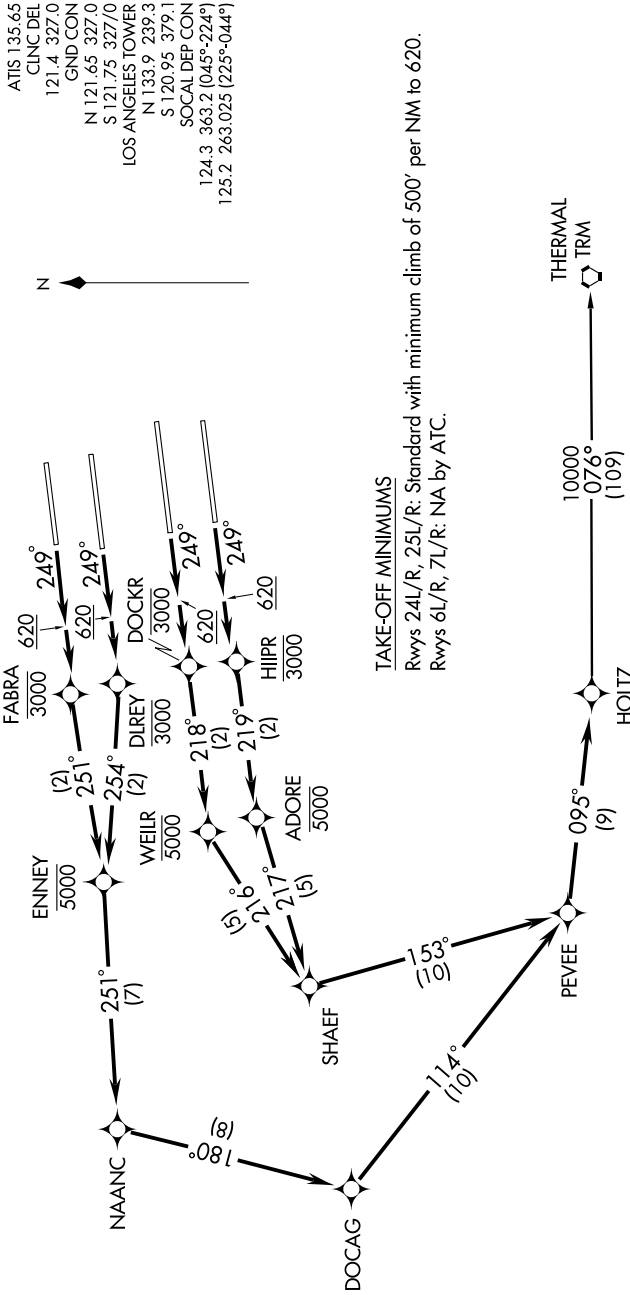


# HOLTZ NINE DEPARTURE (RNAV)

SL-237 (FAA)

LOS ANGELES INTL (LAX)  
LOS ANGELES, CALIFORNIA

6000 FT 01 NOV 2009 to 17 DEC 2009



ATIS 135.65  
 CLNC DEL  
 121.4 327.0  
 GND CON  
 N 121.65 327.0  
 S 121.75 327.0  
 LOS ANGELES TOWER  
 N 133.9 239.3  
 S 120.95 379.1  
 SOCIAL DEP CON  
 124.3 363.2 (045°-224°)  
 125.2 263.025 (225°-044°)



### TAKE-OFF MINIMUMS

Rwy 24L/R, 25L/R: Standard with minimum climb of 500' per NM to 620.  
 Rwy 6L/R, 7L/R: NA by ATC.

### TAKE-OFF OBSTACLE NOTES

- Rwy 24L: Bush 957' from DER, 601' left of centerline, 29' AGL/148' MSL.
- Light pole 273' from DER, 547' left of centerline, 12' AGL/120' MSL.
- Light pole 301' from DER, 425' left of centerline, 10' AGL/118' MSL.
- Antenna on pole 1358' from DER, 287' right of centerline 25' AGL/144' MSL.
- Bush 240' feet from DER, 508' right of centerline, 10' AGL/116' MSL.
- Light pole 296' from DER, 321' right of centerline, 8' AGL/116' MSL.
- OL on glideslope 213' from DER, 400' left of centerline, 34' AGL/151' MSL.
- T-1 tower 2800' from DER, 765' left of centerline, 55' AGL/184' MSL.
- Transmission tower 2856' from DER, 927' left of centerline, 82' AGL/192' MSL.
- Tree 2379' from DER, 778' left of centerline, 79' AGL/197' MSL.
- Bush 134' from DER, 397' left of centerline, 5' AGL/123' MSL.

NOTE: 1. DME/DME/IRU or GPS Required.  
2. RNAV 1.

NOTE: For non-GPS equipped aircraft departing Rwy 25R or 25L, SII must be operational.

NOTE: Rwy 24L, 24R departures expect radar vector to PEVEE prior to NAANC.

NOTE: RADAR Required.

(NARRATIVE ON FOLLOWING PAGE)

NOTE: Chart not to scale.