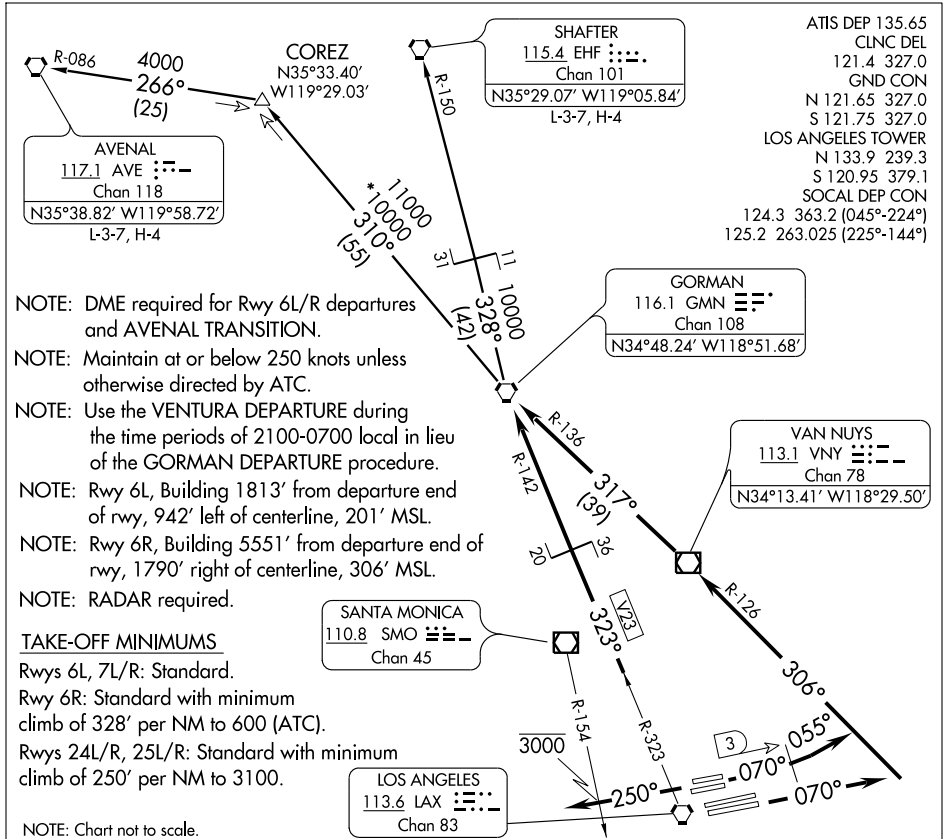


GORMAN FOUR DEPARTURE

SL-237 (FAA)

LOS ANGELES INTL (LAX)
LOS ANGELES, CALIFORNIA



ATIS DEP 135.65
 CLNC DEL 121.4 327.0
 GND CON N 121.65 327.0
 S 121.75 327.0
 LOS ANGELES TOWER N 133.9 239.3
 S 120.95 379.1
 SOCAL DEP CON 124.3 363.2 (045°-224°)
 125.2 263.025 (225°-144°)

- NOTE: DME required for Rwy 6L/R departures and AVENAL TRANSITION.
- NOTE: Maintain at or below 250 knots unless otherwise directed by ATC.
- NOTE: Use the VENTURA DEPARTURE during the time periods of 2100-0700 local in lieu of the GORMAN DEPARTURE procedure.
- NOTE: Rwy 6L, Building 1813' from departure end of rwy, 942' left of centerline, 201' MSL.
- NOTE: Rwy 6R, Building 5551' from departure end of rwy, 1790' right of centerline, 306' MSL.
- NOTE: RADAR required.

TAKE-OFF MINIMUMS

- Rwys 6L, 7L/R: Standard.
- Rwy 6R: Standard with minimum climb of 328' per NM to 600 (ATC).
- Rwys 24L/R, 25L/R: Standard with minimum climb of 250' per NM to 3100.

NOTE: Chart not to scale.

DEPARTURE ROUTE DESCRIPTION

TAKE-OFF RUNWAYS 6L/R: Climb via heading 070° until LAX VORTAC 3 DME, then turn left heading 055° for vector to join VNY R-126 to VNY VOR/DME, then via VNY R-317 and GMN R-136 to GMN VORTAC. Thence....

TAKE-OFF RUNWAYS 7L/R: Climb via heading 070° for vector to join VNY R-126 to VNY VOR/DME, then via VNY R-317 and GMN R-136 to GMN VORTAC. Thence....

TAKE-OFF RUNWAYS 24L/R,25L/R: Climb via heading 250° to cross SMO R-154 at or below 3000, then via radar vectors to proceed via LAX R-323 and GMN R-142 to GMN VORTAC. Thence....

...via (assigned transition) or (assigned route). All aircraft expect further clearance to filed flight level three minutes after departure.

LOST COMMUNICATIONS: If not in contact with departure control within five minutes after departure, climb to FL230 or filed altitude whichever is lower. Aircraft filing FL240 or above climb to filed altitude ten minutes after departure.

AVENAL TRANSITION (GMN4.AVE): From over GMN VORTAC via GMN R-310 and AVE R-086 to AVE VORTAC.

SHAFTER TRANSITION (GMN4.EHF): From over GMN VORTAC via GMN R-328 and EHF R-150 to EHF VORTAC.

GORMAN FOUR DEPARTURE

SW-3, 19 NOV 2009 to 17 DEC 2009

SW-3, 19 NOV 2009 to 17 DEC 2009