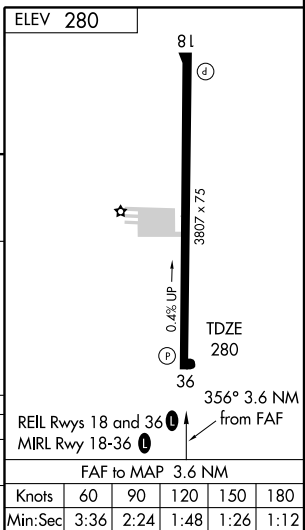
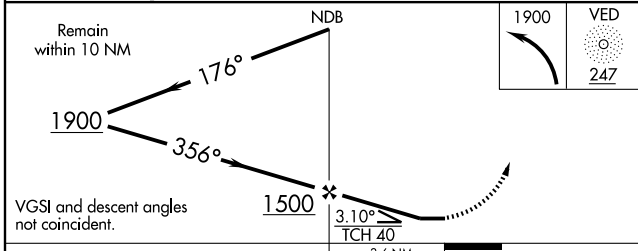
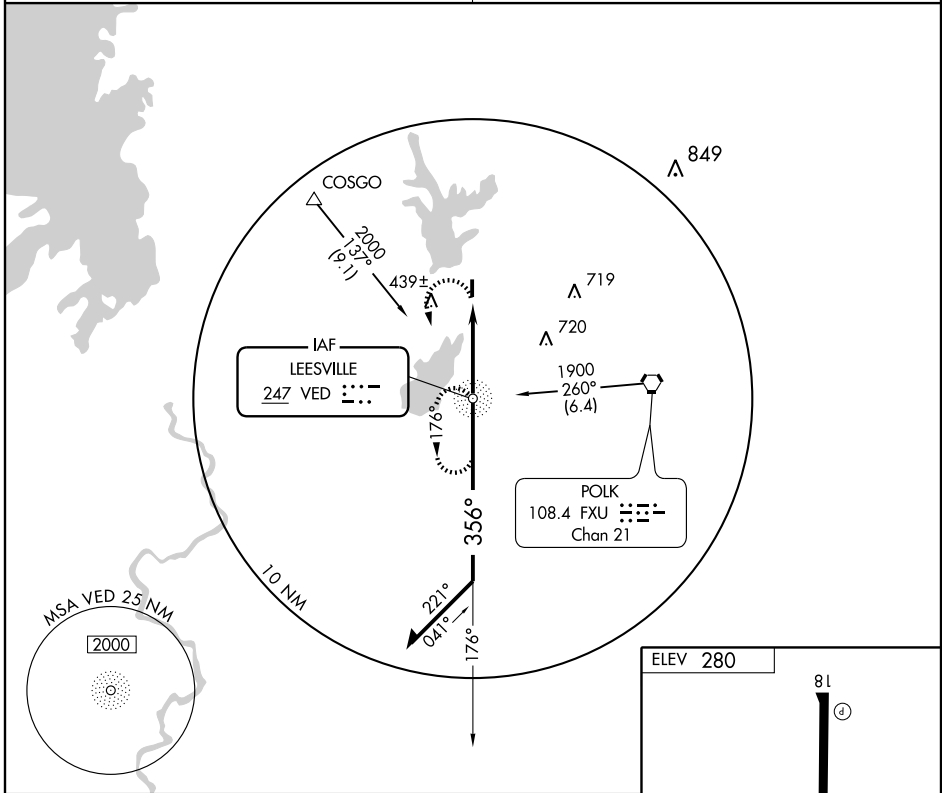


NDB RWY 36

LEESVILLE (L39)

NDB VED 247	APP CRS 356°	Rwy Idg TDZE Apt Elev	3807 280 280
-----------------------	------------------------	-----------------------------	---

<p>▲ NA Use Polk AAF altimeter setting.</p>	<p>MISSED APPROACH: Climbing left turn to 1900 direct VED NDB and hold.</p>
<p>POLK APP CON 123.7 254.8</p>	<p>UNICOM 122.8 (CTAF) 📻</p>



CATEGORY	A	B	C	D
S-36	780-1	500 (500-1)	780-1½ 500 (500-1¼)	NA
CIRCLING	780-1	500 (500-1)	780-1½ 500 (500-1½)	NA

ELEV 280					
<p>REIL Rwy 18 and 36 📻</p> <p>MIRL Rwy 18-36 📻</p> <p>FAF to MAP 3.6 NM</p>					
Knots	60	90	120	150	180
Min:Sec	3:36	2:24	1:48	1:26	1:12

SC-4, 19 NOV 2009 to 17 DEC 2009

SC-4, 19 NOV 2009 to 17 DEC 2009

RNAV (GPS) RWY 36

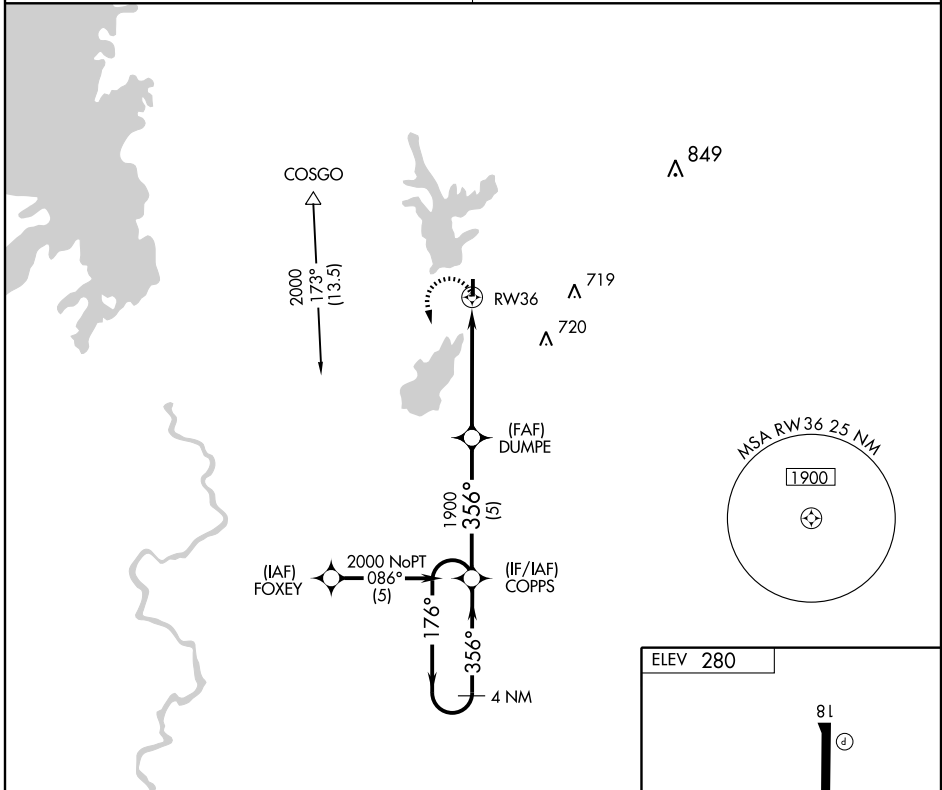
LEESVILLE (L39)

APP CRS 356°	Rwy Idg 3807
	TDZE 280
	Apt Elev 280

▲ NA Use Polk AAF altimeter setting.
GPS or RNP-0.3 REQUIRED. DME/DME RNP-0.3 NA.

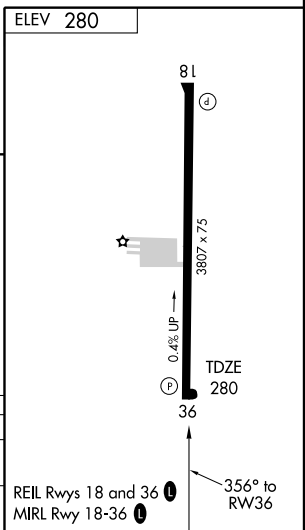
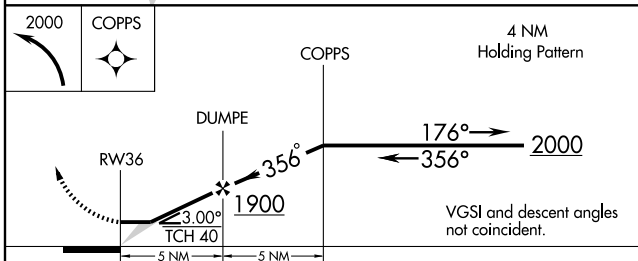
MISSED APPROACH: Climbing left turn to 2000 direct COPPS and hold.

POLK APP CON 123.7 254.8	UNICOM 122.8 (CTAF) ①
------------------------------------	---------------------------------



SC-4, 19 NOV 2009 to 17 DEC 2009

SC-4, 19 NOV 2009 to 17 DEC 2009



CATEGORY	A	B	C	D
LNVA MDA	720-1	440 (500-1)	720-1¼ 440 (500-1¼)	NA
CIRCLING	760-1 480 (500-1)	780-1 500 (500-1)	780-1½ 500 (500-1½)	NA