

WAAS CH 66030 W01A	APP CRS 008°	Rwy Idg TDZE 4702 104 Apt Elev 107
---------------------------------	------------------------	--

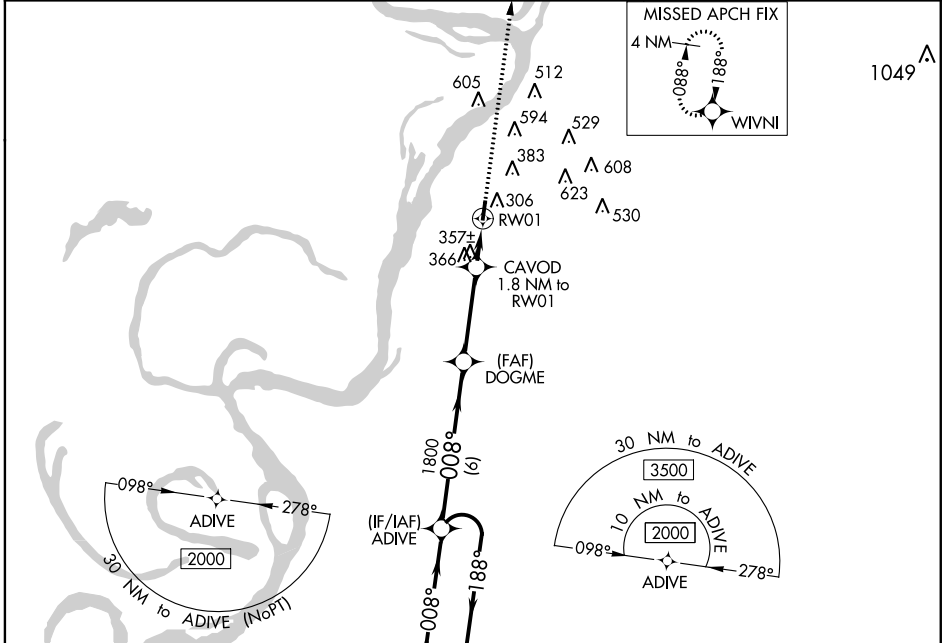
RNAV (GPS) RWY 1

VICKSBURG MUNI (VKS)

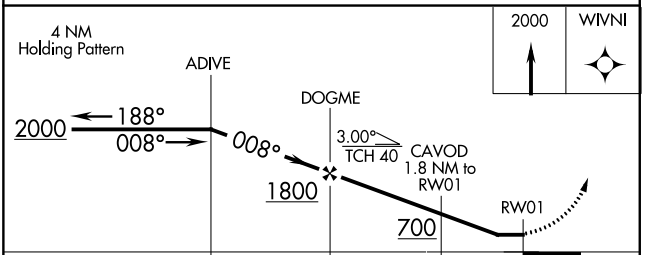
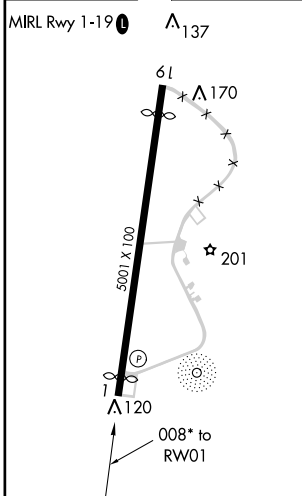
⚠ Circling NA for Cat D west of Rwy 1-19. DME/DME RNP-0.3 NA. When local altimeter setting not received, use Vicksburg Tallulah Rgnl altimeter setting and increase all MDA 40 feet, increase LP Cats C/D visibility ¼ mile, LNAV Cats C/D visibility ⅓ mile and Circling Cat C visibility ¼ mile. Helicopter visibility reduction below 1SM not authorized. Procedure NA at night.

⚠ MISSED APPROACH: Climb to 2000 direct WIVNI and hold.

AWOS-3 118.85	MEMPHIS CENTER 132.5 259.1	UNICOM 122.8 (CTAF) 0
-------------------------	--------------------------------------	---------------------------------



ELEV 107	TDZE 104
----------	----------



CATEGORY	A	B	C	D
LP MDA	620-1	516 (600-1)	620-1 ⅓	516 (600-1 ⅓)
LNAV MDA	640-1	536 (500-1)	640-1 ½	536 (500-1 ½)
CIRCLING	700-1	593 (600-1)	700-1 ½ 593 (600-1 ½)	860-2 ½ 753 (800-2 ½)

SC-4, 27 APR 2017 to 25 MAY 2017

SC-4, 27 APR 2017 to 25 MAY 2017

WAAS CH 60932 W19A	APP CRS 188°	Rwy Idg TDZE Apt Elev	4529 106 107
--	------------------------	-----------------------------	---

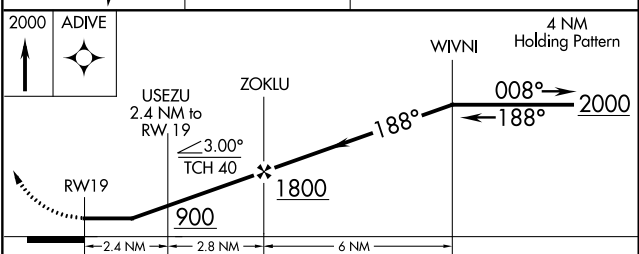
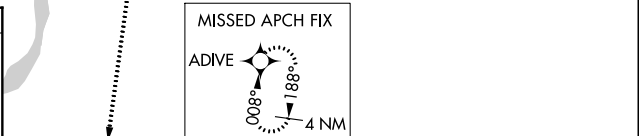
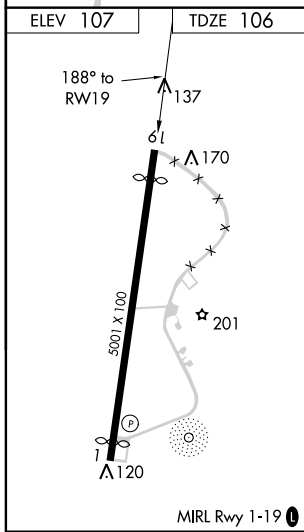
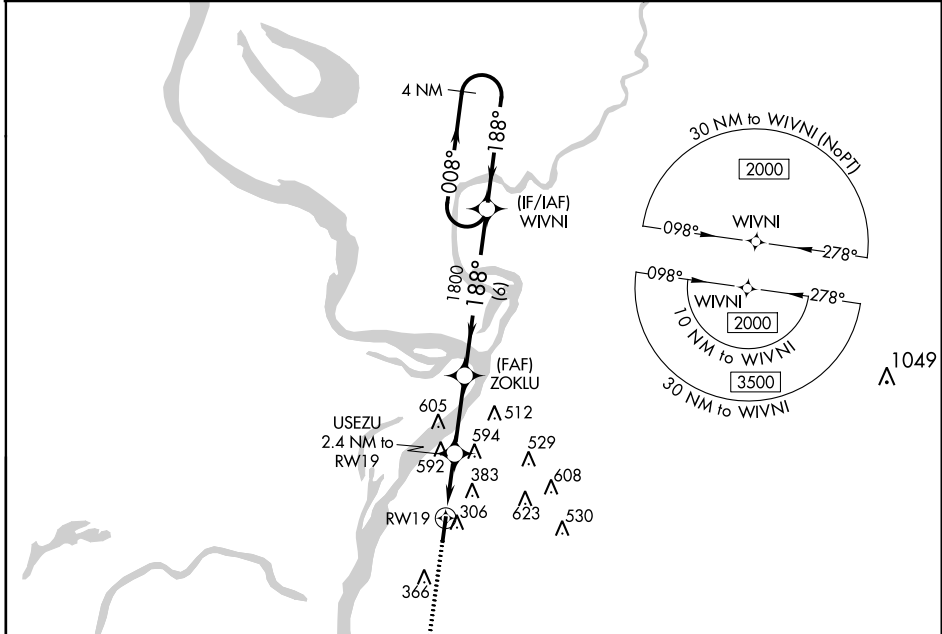
RNAV (GPS) RWY 19

VICKSBURG MUNI (VKS)

⚠ Circling NA for Cat D west of Rwy 1-19. DME/DME RNP-0.3 NA. When local altimeter setting not received, use Vicksburg Tallulah Rgnl altimeter setting and increase all MDA 40 feet, increase LP Cat C/D visibility 1/8 mile and LNAV Cat C/D 1/2 mile and Circling Cat C 1/4 mile. Procedure NA at night. Helicopter visibility reduction below 1 SM not authorized.

MISSED APPROACH:
Climb to 2000 direct ADIVE and hold.

AWOS-3 118.85	MEMPHIS CENTER 132.5 259.1	UNICOM 122.8 (CTAF) 📻
-------------------------	--------------------------------------	--



CATEGORY	A	B	C	D
LP MDA	660-1	554 (600-1)	660-1 ³ / ₈	554 (600-1 ³ / ₈)
LNAV MDA	860-1 754 (800-1)	860-1 ¹ / ₄ 754 (800-1 ¹ / ₄)	860-2	754 (800-2)
CIRCLING	860-1 753 (800-1)	860-1 ¹ / ₄ 753 (800-1 ¹ / ₄)	860-2 ¹ / ₄ 753 (800-2 ¹ / ₄)	860-2 ¹ / ₂ 753 (800-2 ¹ / ₂)