

WAAS CH 66030 W01A	APP CRS 008°	Rwy Idg TDZE 4702 104 Apt Elev 107
---------------------------------	------------------------	------------------------------------------------------------------

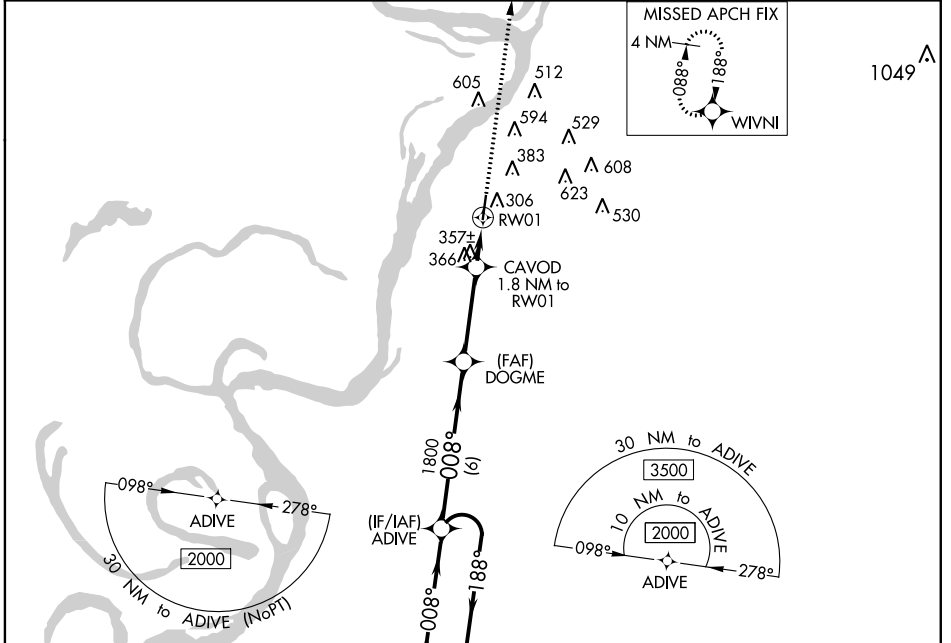
RNAV (GPS) RWY 1

VICKSBURG MUNI (VKS)

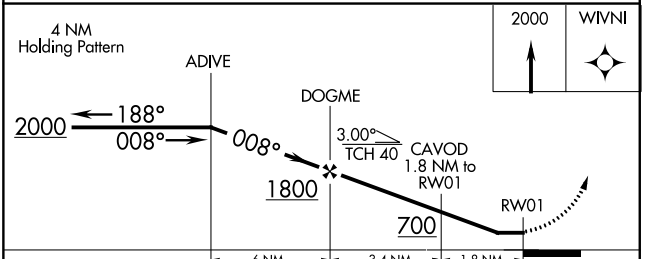
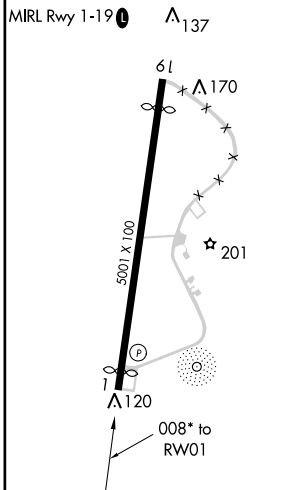
⚠ Circling NA for Cat D west of Rwy 1-19. DME/DME RNP-0.3 NA. When local altimeter setting not received, use Vicksburg Tallulah Rgnl altimeter setting and increase all MDA 40 feet, increase LP Cats C/D visibility ¼ mile, LNAV Cats C/D visibility ⅓ mile and Circling Cat C visibility ¼ mile. Helicopter visibility reduction below 1SM not authorized. Procedure NA at night.

⚠ MISSED APPROACH: Climb to 2000 direct WIVNI and hold.

AWOS-3 118.85	MEMPHIS CENTER 132.5 259.1	UNICOM 122.8 (CTAF) 0
-------------------------	--------------------------------------	---------------------------------



ELEV 107	TDZE 104
----------	----------



CATEGORY	A	B	C	D
LP MDA	620-1	516 (600-1)	620-1 ⅓	516 (600-1 ⅓)
LNAV MDA	640-1	536 (500-1)	640-1 ½	536 (500-1 ½)
CIRCLING	700-1	593 (600-1)	700-1 ½ 593 (600-1 ½)	860-2 ½ 753 (800-2 ½)

SC-4, 22 JUN 2017 to 20 JUL 2017

SC-4, 22 JUN 2017 to 20 JUL 2017

WAAS CH 60932 W19A	APP CRS 188°	Rwy Idg TDZE 106 Apt Elev 107	4529
----------------------------------------	------------------------	---------------------------------------------------	-------------

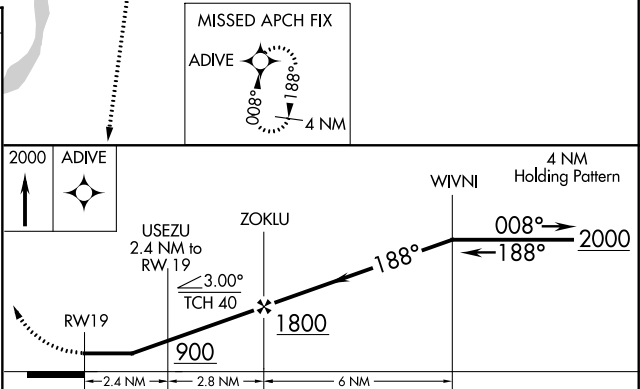
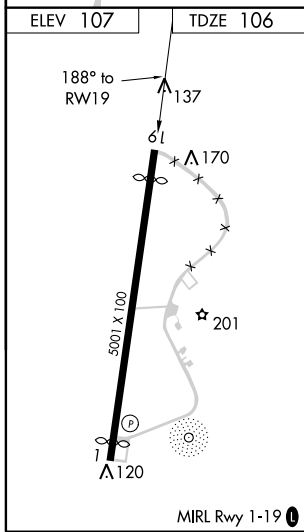
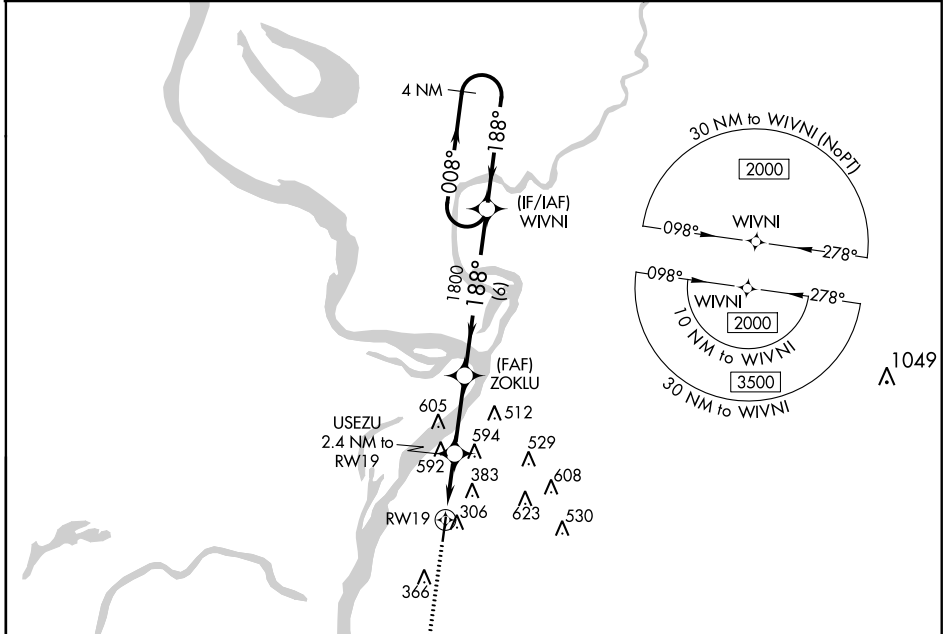
RNAV (GPS) RWY 19

VICKSBURG MUNI (VKS)

⚠ Circling NA for Cat D west of Rwy 1-19. DME/DME RNP-0.3 NA. When local altimeter setting not received, use Vicksburg Tallulah Rgnl altimeter setting and increase all MDA 40 feet, increase LP Cat C/D visibility 1/8 mile and LNAV Cat C/D 1/2 mile and Circling Cat C 1/4 mile. Procedure NA at night. Helicopter visibility reduction below 1 SM not authorized.

MISSED APPROACH:
Climb to 2000 direct ADIVE and hold.

AWOS-3 118.85	MEMPHIS CENTER 132.5 259.1	UNICOM 122.8 (CTAF) 📻
-------------------------	--------------------------------------	----------------------------------------



CATEGORY	A	B	C	D
LP MDA	660-1	554 (600-1)	660-1 ³ / ₈	554 (600-1 ³ / ₈)
LNAV MDA	860-1 754 (800-1)	860-1 ¹ / ₄ 754 (800-1 ¹ / ₄)	860-2	754 (800-2)
CIRCLING	860-1 753 (800-1)	860-1 ¹ / ₄ 753 (800-1 ¹ / ₄)	860-2 ¹ / ₄ 753 (800-2 ¹ / ₄)	860-2 ¹ / ₂ 753 (800-2 ¹ / ₂)

SC-4, 22 JUN 2017 to 20 JUL 2017

SC-4, 22 JUN 2017 to 20 JUL 2017



INSTRUMENT APPROACH PROCEDURE CHARTS



IFR ALTERNATE AIRPORT MINIMUMS

Standard alternate minimums for non-precision approaches and approaches with vertical guidance [NDB, VOR, LOC, TACAN, LDA, SDF, VOR/DME, ASR, RNAV (GPS) or RNAV (RNP)] are 800-2. Standard alternate minimums for precision approaches (ILS, PAR, or GLS) are 600-2. Airports within this geographical area that require alternate minimums other than standard or alternate minimums with restrictions are listed below. NA - means alternate minimums are not authorized due to unmonitored facility, absence of weather reporting service, or lack of adequate navigation coverage. Civil pilots see FAR 91. IFR Alternate Minimums: Ceiling and Visibility Minimums not applicable to USA/USN/USAF. Pilots must review the IFR Alternate Minimums Notes for alternate airfield suitability.

NAME ALTERNATE MINIMUMS

ABBEVILLE, LA

ABBEVILLE CHRIS CRUSTA
MEMORIAL (IYA)..... RNAV (GPS) Rwy 16
RNAV (GPS) Rwy 34

NA when local weather not available.

ALEXANDRIA, LA

ESLER RGNL (ESF) RNAV (GPS) Rwy 9
RNAV (GPS) Rwy 27

NA when local weather not available.

BASTROP, LA

MOREHOUSE
MEMORIAL (BQP) RNAV (GPS) Rwy 16
RNAV (GPS) Rwy 34

NA when local weather not available.

BATON ROUGE, LA

BATON ROUGE METROPOLITAN:
RYAN FIELD (BTR) ILS or LOC Rwy 13¹²⁴
ILS or LOC/DME Rwy 22R¹²⁴
RADAR-1²⁵
RNAV (GPS) Rwy 4L⁴
RNAV (GPS) Rwy 13⁴⁵
RNAV (GPS) Rwy 22R⁴⁵
RNAV (GPS) Rwy 31⁴⁵
VOR Rwy 4L³⁴

¹ILS, Category C, 800-2; Category D, 800-2½;
LOC, Category D, 800-2½.

²NA when control tower closed.

³Categories C, D, 800-2½.

⁴NA when local weather not available.

⁵Category D, 800-2½.

NAME ALTERNATE MINIMUMS

BAY ST LOUIS, MS

STENNIS
INTL (HSA)..... ILS Y or LOC Y Rwy 18¹²
ILS Z or LOC Z Rwy 18¹²
NDB Rwy 18²
RNAV (GPS) Rwy 18²
RNAV (GPS) Rwy 36²

NA when local weather not available.

¹NA when control tower closed.

²Category D, 800-2½; Category E, 800-2¾.

CLARKSDALE, MS

FLETCHER
FIELD (CKM)..... RNAV (GPS) Rwy 18
RNAV (GPS) Rwy 36

NA when local weather not available.

CLEVELAND, MS

CLEVELAND
MUNI (RNV) RNAV (GPS) Rwy 18
RNAV (GPS) Rwy 36
VOR-A

NA when local weather not available.

Category C, 800-2¼; Category D, 800-2½.

COLUMBUS-WEST POINT-
STARKVILLE, MS

GOLDEN TRIANGLE
RGNL (GTR) ILS or LOC Rwy 18¹
ILS or LOC Rwy 36²⁴
RNAV (GPS) Rwy 18⁵
RNAV (GPS) Rwy 36³

NA when local weather not available.

¹ILS, Category E, 700-2½; LOC, Category E, 800-2½.

²ILS, LOC, Categories A, B, 900-2, Category C, 900-2½, Category D, 900-2¾, Category E, 900-3.

³Category E, 800-2½.

⁴NA when control tower closed.

⁵Category D, 800-2¼, Category E, 800-2½.

22 JUN 2017 to 20 JUL 2017

22 JUN 2017 to 20 JUL 2017





ALTERNATE MINS

17173

M2



CORINTH, MS
 ROSCOE
 TURNER (CRX) **ILS or LOC Rwy 18¹**
 RNAV (GPS) Rwy 18
 RNAV (GPS) Rwy 36

NA when local weather not available.
¹ILS, Category C, 700-2; Category D, 800-2¹/₄;
 LOC, Category D, 800-2¹/₄.

DE RIDDER, LA
 BEAUREGARD
 RGNL (DRI)..... **RNAV (GPS) Rwy 18**
 RNAV (GPS) Rwy 36

NA when local weather not available.

GALLIANO, LA
 SOUTH LAFOURCHE LEONARD
 MILLER JR (GAO) **ILS or LOC/DME Rwy 36¹**
 RNAV (GPS) Rwy 18
 RNAV (GPS) Rwy 36

NA when local weather not available.
¹ILS, Category C, D, 700-2.

GREENVILLE, MS
 GREENVILLE-MID
 DELTA (GLH)..... **ILS or LOC Rwy 18L²**
 NDB Rwy 36L¹
 NDB Rwy 36R¹
 RNAV (GPS) Rwy 18L²
 RNAV (GPS) Rwy 18R²
 RNAV (GPS) Rwy 36L²
 RNAV (GPS) Rwy 36R²
 VOR/DME Rwy 18R²

¹NA when control tower closed.
²NA when local weather not available.

GREENWOOD, MS
 GREENWOOD-
 LEFLORE (GWO) **ILS or LOC Rwy 18¹**
 RNAV (GPS) Rwy 5
 RNAV (GPS) Rwy 18
 RNAV (GPS) Rwy 36
 VOR Rwy 5²

NA when local weather not available.
¹ILS, Categories A, B, C, D, 700-2.
²Category C, 900-2¹/₂; Category D, 1000-3.

GULFPORT, MS
 GULFPORT-BILOXI
 INTL (GPT)..... **ILS or LOC Rwy 14¹⁴**
 ILS or LOC Rwy 32²⁴
 RADAR-1³⁴
 RNAV (GPS) Rwy 14⁵
 RNAV (GPS) Rwy 18⁵
 RNAV (GPS) Rwy 32⁵
 RNAV (GPS) Rwy 36⁵
VOR/DME or TACAN Rwy 14³
VOR/DME or TACAN Rwy 32³

¹ILS, Categories B, C, D, 700-2; Category E, 800-2³/₄. LOC, Category E, 800-2³/₄.
²ILS, Categories C, D, 700-2; Category E, 800-2³/₄. LOC, Category E, 800-2³/₄.
³Category E, 800-2³/₄.
⁴NA when control tower closed.
⁵NA when local weather not available.

HAMMOND, LA
 HAMMOND NORTSHORE
 RGNL (HDC)..... **RNAV (GPS) Rwy 18**
 RNAV (GPS) Rwy 31
 RNAV (GPS) Rwy 36

NA when local weather not available.

HATTIESBURG, MS
 HATTIESBURG BOBBY L. CHAIN
 MUNI (HBG)..... **RNAV (GPS) Y Rwy 13**
 RNAV (GPS) Z Rwy 13

NA when local weather not available.

HATTIESBURG/LAUREL, MS
 HATTIESBURG-LAUREL
 RGNL (PIB)..... **RNAV (GPS) Rwy 18**
 RNAV (GPS) Rwy 36

NA when local weather not available.

HOUMA, LA
 HOUMA-TERREBONNE
 (HUM)..... **COPTER VOR/DME Rwy 12**
 ILS or LOC Rwy 18²³
 RNAV (GPS) Rwy 12¹
 RNAV (GPS) Rwy 18
 RNAV (GPS) Rwy 30
 RNAV (GPS) Rwy 36
 VOR/DME Rwy 30

NA when local weather not available.
¹Category D, 800-2¹/₄.
²NA when control tower closed.
³ILS, LOC, Category C, 800-2¹/₄; Category D, 800-2¹/₂.

22 JUN 2017 to 20 JUL 2017

22 JUN 2017 to 20 JUL 2017



ALTERNATE MINS

17173

M2

SC-4





ALTERNATE MINS

17173

M3



JACKSON, MS
HAWKINS FIELD (HKS) **ILS or LOC Rwy 16¹²**
RNAV (GPS) Rwy 16³
RNAV (GPS) Rwy 34³

NA when local weather not available.
¹NA when control tower closed.
²ILS, LOC, Category C, 800-2¼; Category D, 1000-3.
³Category C, 800-2¼; Category D, 1000-3.

JACKSON-MEDGAR WILEY EVERS
INTL (JAN) **ILS or LOC Rwy 16L¹²³**
ILS or LOC Rwy 34L¹³
RADAR-1⁴
RNAV (GPS) Rwy 16L³⁵
RNAV (GPS) Rwy 16R³⁵
RNAV (GPS) Rwy 34L³⁵
RNAV (GPS) Rwy 34R³⁵
VOR/DME or TACAN Rwy 16L³⁵
VOR/DME or TACAN Rwy 16R³⁵
VOR/DME or TACAN Rwy 34L³⁵
VOR/DME or TACAN Rwy 34R³⁵

¹NA when control tower closed.
²ILS, Category D, 700-2; Category E, 700-2½; LOC, Category E, 800-2½.
³NA when local weather not available.
⁴Category E, 800-2¼.
⁵Category E, 800-2½.

JENNINGS, LA
JENNINGS (3R7) **RNAV (GPS) Rwy 8**
RNAV (GPS) Rwy 26
NA when local weather not available.

LAFAYETTE, LA
LAFAYETTE RGNL/PAUL FOURNET
FIELD (LFT) **ILS or LOC/DME Rwy 4R¹²**
ILS or LOC Rwy 22L¹²
RNAV (GPS) Rwy 4R
RNAV (GPS) Rwy 22L
RNAV (GPS) Rwy 29
VOR/DME Rwy 11

NA when local weather not available.
¹ILS, Category D, 700-2.
²NA when control tower closed.

LAKE CHARLES, LA
CHENNAULT
INTL (CWF) **ILS or LOC Rwy 15¹²**
RNAV (GPS) Rwy 33³

¹NA when control tower closed.
²Category E, 900-3.
³NA when local weather not available.

LAKE CHARLES, LA (CON'T)
LAKE CHARLES
RGNL (LCH) **ILS or LOC Rwy 15¹**
LOC BC Rwy 33

NA when control tower closed.
¹ILS, Category D, 700-2.

MC COMB, MS
MC COMB/PIKE COUNTY/JOHN E LEWIS
FIELD (MCB) **ILS or LOC Rwy 15**
RNAV (GPS) Rwy 15
RNAV (GPS) Rwy 33
VOR/DME-A

NA when local weather not available.

MERIDIAN, MS
KEY FIELD (MEI) **ILS or LOC Rwy 1¹²³**
ILS or LOC Rwy 19¹³⁶
RADAR1¹⁵
RNAV (GPS) Rwy 1³⁷
RNAV (GPS) Rwy 4³⁴
RNAV (GPS) Rwy 19³⁵
RNAV (GPS) Rwy 22³⁴
VOR-A⁷

¹NA when control tower closed.
²ILS, Categories A, B, C, 700-2; Category D, 900-2¼; Category E, 900-3. LOC, Category D, 900-2¼; Category E, 900-3.
³NA when local weather not available.
⁴Category D, 900-2¼.
⁵Category D, 900-2¼; Category E, 900-3.
⁶ILS, Categories A, B, 800-2; Category C, 800-2¼; Category D, 900-2¼; Category E, 900-3.
⁷Category D, 900-2¼; Category E, 900-3.

MINDEN, LA
MINDEN (MNE) **RNAV (GPS) Rwy 1**
RNAV (GPS) Rwy 19
VOR/DME-A¹

NA when control tower closed.
¹Categories A, B, 1300-2; Categories C, D, 1300-3.

MONROE, LA
MONROE RGNL (MLU) **ILS or LOC Rwy 4¹**
ILS or LOC Rwy 22¹
VOR/DME Rwy 4²
VOR/DME Rwy 32²

¹NA when control tower closed.
²Category D, 1100-3.

22 JUN 2017 to 20 JUL 2017

22 JUN 2017 to 20 JUL 2017



ALTERNATE MINS

17173

M3

SC-4





ALTERNATE MINS

17173

M5



RESERVE, LA
PORT OF SOUTH LOUISIANA EXECUTIVE
RGNL (APS)..... **RNAV (GPS) Rwy 17**
 RNAV (GPS) Rwy 35
 VOR Rwy 35

NA when local weather not available.
Category C, 900-2½.

RUSTON, LA
RUSTON RGNL (RSN)..... **RNAV (GPS) Rwy 18**
 RNAV (GPS) Rwy 36

NA when local weather not available.

SHREVEPORT, LA
SHREVEPORT
DOWNTOWN (DTN)..... **LOC Rwy 14¹²**
 RNAV (GPS) Rwy 14
 RNAV (GPS) Rwy 32

Category C, 1000-2¾; Category D, 1000-3.

¹NA when control tower closed.

²NA when local weather not available.

SHREVEPORT
RGNL (SHV) **ILS or LOC Rwy 14¹**
 ILS or LOC Rwy 32²
 LOC Rwy 6³
 RNAV (GPS) Rwy 6⁴
 RNAV (GPS) Rwy 14⁴
 RNAV (GPS) Rwy 24⁴
 RNAV (GPS) Rwy 32⁴

¹ILS, Category C, 800-2; Category D, 900-2¾;
Category E, 900-3. LOC, Category D, 900-2¾;
Category E, 900-3.

²ILS, Category C, 800-2; Category D, 900-2¾.
LOC, Category D, 900-2¾.

³Category D, 900-2¾; Category E, 900-3.

⁴Category D, 900-2¾.

STARKVILLE, MS
GEORGE M
BRYAN (STF)..... **RNAV (GPS) Rwy 36**

NA when local weather not available.
Category D, 800-2¼.

SULPHUR, LA
SOUTHLAND FIELD (UXL)..... **LOC Rwy 15**
 RNAV (GPS) Rwy 15
 RNAV (GPS) Rwy 33
 VOR/DME-A

NA when local weather not available.

TALLULAH, LA
VICKSBURG TALLULAH
RGNL (TVR)..... **RNAV (GPS) Rwy 18**
 RNAV (GPS) Rwy 36

NA when local weather not available.

TUNICA, MS
TUNICA MUNI (UTA)..... **ILS or LOC Rwy 35**
 RNAV (GPS) Rwy 17
 RNAV (GPS) Rwy 35
 VOR/DME-A

NA when local weather not available.

TUPELO, MS
TUPELO RGNL (TUP)..... **COPTER VOR 023°**
 ILS Y or LOC Y Rwy 36¹
 ILS Z or LOC Z Rwy 36¹
 RNAV (GPS) Rwy 18¹
 RNAV (GPS) Rwy 36¹
 VOR/DME Rwy 18¹

NA when local weather not available.

¹Category D, 800-2½.

VICKSBURG, MS
VICKSBURG
MUNI (VKS) **RNAV (GPS) Rwy 1**
 RNAV (GPS) Rwy 19

NA when local weather not available.

22 JUN 2017 to 20 JUL 2017

22 JUN 2017 to 20 JUL 2017



ALTERNATE MINS

17173

M5

SC-4



TAKEOFF MINIMUMS, (OBSTACLE) DEPARTURE PROCEDURES, AND DIVERSE VECTOR AREA (RADAR VECTORS) INSTRUMENT APPROACH PROCEDURE CHARTS

17145

IFR TAKEOFF MINIMUMS AND (OBSTACLE) DEPARTURE PROCEDURES

Civil Airports and Selected Military Airports

ALL USERS: Airports that have Departure Procedures (DPs) designed specifically to assist pilots in avoiding obstacles during the climb to the minimum enroute altitude, and/or airports that have civil IFR takeoff minimums other than standard, are listed below. Takeoff Minimums and Departure Procedures apply to all runways unless otherwise specified. Altitudes, unless otherwise indicated, are minimum altitudes in MSL.

DPs specifically designed for obstacle avoidance are referred to as Obstacle Departure Procedures (ODPs) and are textually described below, or published separately as a graphic procedure. If the ODP is published as a graphic procedure, its name will be listed below, and it can be found in either this volume (civil), or the applicable military volume, as appropriate. Users will recognize graphic obstacle DPs by the term "(OBSTACLE)" included in the procedure title; e.g., TETON TWO (OBSTACLE). If not specifically assigned an ODP, SID, or radar vector as part of an IFR clearance, an ODP may be required to be flown for obstacle clearance, even though not specifically stated in the IFR clearance. When doing so in this manner, ATC should be informed when the ODP being used contains a specified route to be flown, restrictions before turning, and/or altitude restrictions.

Some ODPs, which are established solely for obstacle avoidance, require a climb in visual conditions to cross the airport, a fix, or a NAVAID in a specified direction, at or above a specified altitude. These procedures are called Visual Climb Over Airport (VCOA). To ensure safe and efficient operations, the pilot must verbally request approval from ATC to fly the VCOA when requesting their IFR clearance.

At some locations where an ODP has been established, a diverse vector area (DVA) may be created to allow radar vectors to be used in lieu of an ODP. DVA information will state that headings will be as assigned by ATC and climb gradients, when applicable, will be published immediately following the specified departure procedure.

Graphic DPs designed by ATC to standardize traffic flows, ensure aircraft separation and enhance capacity are referred to as "Standard Instrument Departures (SIDs)". SIDs also provide obstacle clearance and are published under the appropriate airport section. ATC clearance must be received prior to flying a SID.

CIVIL USERS NOTE: Title 14 Code of Federal Regulations Part 91 prescribes standard takeoff rules and establishes takeoff minimums for certain operators as follows: (1) For aircraft, other than helicopters, having two engines or less – one statute mile visibility. (2) For aircraft having more than two engines – one-half statute mile visibility. (3) For helicopters – one-half statute mile visibility. These standard minima apply in the absence of any different minima listed below.

MILITARY USERS NOTE: Civil (nonstandard) takeoff minima are published below. For military takeoff minima, refer to appropriate service directives.

NAME TAKEOFF MINIMUMS NAME TAKEOFF MINIMUMS

ABBEVILLE, LA

ABBEVILLE CHRIS CRUSTA MEMORIAL (IYA) TAKEOFF MINIMUMS AND (OBSTACLE) DEPARTURE PROCEDURES ORIG 11237 (FAA)

NOTE: Rwy 16, trees and poles beginning 1' from DER, 36' left of centerline, up to 98' AGL/112' MSL. Trees and poles beginning 32' from DER, 14' right of centerline, up to 81' AGL/95' MSL. Rwy 34, trees beginning 121' from DER, 275' right of centerline, up to 15' AGL/29' MSL. Trees and pole beginning 1110' from DER, 625' left of centerline, up to 80' AGL/95' MSL. Transmission tower 4414' from DER, 724' left of centerline, 114' AGL/129' MSL.

ABERDEEN/AMORY, MS

MONROE COUNTY (M40) TAKEOFF MINIMUMS AND (OBSTACLE) DEPARTURE PROCEDURES ORIG 07242 (FAA)

NOTE: Rwy 18, pole 460' from DER, 365' left of centerline, 25' AGL/254' MSL. Trees beginning 7' from DER, 61' left of centerline, up to 100' AGL/310' MSL. Trees beginning 839' from DER, 83' right of centerline, up to 116' AGL/316' MSL. Rwy 36, trees beginning 241' from DER, 490' left of centerline, up to 83' AGL/303' MSL. Trees beginning 27' from DER, 426' right of centerline, up to 92' AGL/312' MSL. Tree 3078' from DER, 276' right of centerline, 81' AGL/301' MSL.

22 JUN 2017 to 20 JUL 2017

22 JUN 2017 to 20 JUL 2017

17145

TAKEOFF MINIMUMS, (OBSTACLE) DEPARTURE PROCEDURES, AND DIVERSE VECTOR AREA (RADAR VECTORS)

**TAKEOFF MINIMUMS, (OBSTACLE) DEPARTURE PROCEDURES, AND
DIVERSE VECTOR AREA (RADAR VECTORS)**

17145

ALEXANDRIA, LA

**ALEXANDRIA INTL (AEX)
TAKEOFF MINIMUMS AND (OBSTACLE)
DEPARTURE PROCEDURES
ORIG 07242 (FAA)**

NOTE: **Rwy 18**, multiple trees and bush beginning 897' from DER, 210' right of centerline, up to 83' AGL/173' MSL. Multiple trees and fence beginning 91' from DER, 326' left of centerline, up to 80' AGL/167' MSL. **Rwy 32**, multiple trees beginning 1537' from DER, 662' right of centerline, up to 80' AGL/162' MSL. **Rwy 36**, multiple trees beginning 1298' from DER, 25' left of centerline, up to 90' AGL/170' MSL. Multiple trees beginning 1340' from DER, 155' right of centerline, up to 90' AGL/169' MSL. Antenna, 5041' from DER, 793' left of centerline, 140' AGL/216' MSL.

ESLER RGNL (ESF)

**TAKEOFF MINIMUMS AND (OBSTACLE)
DEPARTURE PROCEDURES
AMDT 2 10098 (FAA)**

NOTE: **Rwy 9**, multiple trees beginning 697' from DER, 612' right of centerline, up to 83' AGL/153' MSL. Antenna 2236' from DER, 912' left of centerline, 78' AGL/158' MSL. **Rwy 14**, trees 928' from DER, 606' left of centerline, 90' AGL/160' MSL. Trees 2003' from DER, 141' left of centerline, 98' AGL/168' MSL. Multiple trees beginning 941' from DER, 257' right of centerline, up to 121' AGL/231' MSL. **Rwy 27**, light 38' from DER, 148' right of centerline, 8' AGL/98' MSL. Pole 650' from DER, 649' right of centerline, 39' AGL/129' MSL. Trees 3290' from DER, 984' right of centerline, 121' AGL/211' MSL. **Rwy 32**, rising terrain from 197' from DER through 1886' from DER, up to 0' AGL/165' MSL. Multiple trees and fence beginning 1959' from DER, 8' left of centerline, up to 123' AGL/236' MSL. Antenna 148' from DER, 417' left of centerline, 15' AGL/125' MSL. Trees 1862' from DER, 200' right of centerline, 79' AGL/219' MSL.

BASTROP, LA

**MOREHOUSE MEMORIAL (BQP)
TAKEOFF MINIMUMS AND (OBSTACLE)
DEPARTURE PROCEDURES
ORIG-A 13318 (FAA)**

NOTE: **Rwy 16**, trees beginning 1033' from DER, 591' right of centerline, up to 90' AGL/247' MSL. Trees beginning 152' from DER, 402' left of centerline, up to 90' AGL/256' MSL. **Rwy 34**, tree 394' right of DER, 53' AGL/218' MSL. Trees beginning 2627' from DER, 119' left of centerline, up to 123' AGL/248' MSL. Power lines 1700' from DER, 70' AGL/214' MSL.

BATESVILLE, MS

**PANOLA COUNTY (PMU)
TAKEOFF MINIMUMS AND (OBSTACLE)
DEPARTURE PROCEDURES
AMDT 1 13234 (FAA)**

DEPARTURE PROCEDURE: **Rwy 1**, climb heading 011° to 800 before proceeding on course. **Rwy 19**, climb heading 191° to 1000 before proceeding on course. NOTE: **Rwy 1**, trees beginning 72' from DER, 157' left of centerline, up to 80' AGL/283' MSL. Trees beginning 129' from DER, 214' right of centerline, up to 100' AGL/305' MSL. **Rwy 19**, trees beginning 478' from DER, 19' left of centerline, up to 100' AGL/357' MSL. Trees beginning 945' from DER, 4' right of centerline, up to 100' AGL/367' MSL. Poles beginning 49' from DER, 378' left of centerline, up to 35' AGL/298' MSL. Pole 2102' from DER, 69' right of centerline, 34' AGL/286' MSL. Vehicle on road 220' from DER, 294' left of centerline, 15' AGL/237' MSL. Vehicle on road 2233' from DER, 493' right of centerline, 15' AGL/281' MSL. Terrain 17' from DER, 36' left of centerline, 259' MSL. Terrain 59' from DER, 210' right of centerline, 224' MSL. Navaid 267' from DER, 257' left of centerline, 23' AGL/241' MSL. Building 1995' from DER, 141' right of centerline, 15' AGL/279' MSL.

22 JUN 2017 to 20 JUL 2017

22 JUN 2017 to 20 JUL 2017

17145

**TAKEOFF MINIMUMS, (OBSTACLE) DEPARTURE PROCEDURES, AND
DIVERSE VECTOR AREA (RADAR VECTORS)**

**TAKEOFF MINIMUMS, (OBSTACLE) DEPARTURE PROCEDURES, AND
DIVERSE VECTOR AREA (RADAR VECTORS)**

17145

BATON ROUGE, LA

BATON ROUGE METROPOLITAN, RYAN
FIELD (BTR)

TAKEOFF MINIMUMS AND (OBSTACLE)
DEPARTURE PROCEDURES
AMDT 1B 15260 (FAA)

TAKEOFF MINIMUMS: **Rwy 22R**, 300-2¼ or std. w/
min. climb of 229' per NM to 500.

DEPARTURE PROCEDURE: **Rwy 22L**, climb heading
220° to 2000 before proceeding on course. **Rwy 22R**,
climb heading 220° to 2000 before proceeding on
course.

NOTE: **Rwy 4L**, vehicles on roadway 210' from DER,
482' right of centerline, 15' AGL/79' MSL. Poles 631'
from DER, 469' left of centerline, 23' AGL/92' MSL.
Trees beginning 1180' from DER, 153' left of
centerline, up to 75' AGL/144' MSL. Trees beginning
1380' from DER, 7' right of centerline, up to 79'
AGL/148' MSL. Transmission tower 2516' from DER,
897' left of centerline, 80' AGL/149' MSL. **Rwy 4R**,
vehicles on roadway 5' from DER, 392' right of
centerline, up to 15' AGL/84' MSL. Trees beginning
207' from DER, 128' right of centerline, up to 85'
AGL/153' MSL. **Rwy 13**, pole 300' from DER, 549' left
of centerline, 22' AGL/91' MSL. Vehicles on roadway
342' from DER, left and right of centerline, up to 15'
AGL/84' MSL. Antenna on building 479' from DER, 247'
right of centerline, 22' AGL/91' MSL. Sign 968' from
DER, 741' right of centerline, 31' AGL/100' MSL. Trees
beginning 1395' from DER, 114' left of centerline, up to
97' AGL/166' MSL. Trees beginning 1807' from DER,
203' right of centerline, up to 95' AGL/164' MSL. Water
tank 1631' from DER, 903' left of centerline, 50'
AGL/117' MSL. **Rwy 22L**, trees beginning 2140' from
DER, 52' left of centerline, up to 90' AGL/156' MSL.
Tree 2371' from DER, 60' right of centerline, 69'
AGL/135' MSL. Sign 3507' from DER, 284' left of
centerline, 77' AGL/163' MSL. **Rwy 22R**, poles
beginning 431' from DER, 81' right of centerline, up to
55' AGL/120' MSL. Building 503' from DER, 481' right
of centerline, 14' AGL/79' MSL. Poles beginning 1063'
from DER, 77' left of centerline, up to 93' AGL/158'
MSL. Trees beginning 1210' from DER, 352' left of
centerline, up to 103' AGL/168' MSL. Trees beginning
444' from DER, 108' right of centerline, up to 89'
AGL/154' MSL. Stacks beginning 9852' from DER,
2390' left of centerline, up to 311' AGL/366' MSL.
Rwy 31, fence 191' from DER, 468' right of centerline,
7' AGL/73' MSL. Trees beginning 814' from DER, 120'
right of centerline, up to 37' AGL/103' MSL. Trees
beginning 1076' from DER, 310' left of centerline, up to
70' AGL/136' MSL. Poles 1353' from DER, 287' right of
centerline, up to 57' AGL/123' MSL. Tank 1862' from
DER, 868' right of centerline, 53' AGL/119' MSL. Poles
beginning 2507' from DER, 274' left of centerline, up to
76' AGL/142' MSL.

BOGALUSA, LA

GEORGE R CARR MEMORIAL AIR FIELD
(BXA)

TAKEOFF MINIMUMS AND (OBSTACLE)
DEPARTURE PROCEDURES
AMDT 3A 15064 (FAA)

TAKEOFF MINIMUMS: **Rwy 18**, 500-3 or std. w/min.
climb of 253' per NM to 800.

NOTE: **Rwy 18**, trees beginning 1273' from DER, 359'
right of centerline, up to 89' AGL/200' MSL. Trees
beginning 1463' from DER, 333' left of centerline, up to
92' AGL/203' MSL. Water tower 2734' from DER, 1047'
left of centerline, 151' AGL/262' MSL. Plant 1.6 NM
from DER, 2404' left of centerline, 247' AGL/357' MSL.
Stack 1.6 NM from DER, 2143' left of centerline, 247'
AGL/357' MSL. **Rwy 36**, building 12' from DER, 305'
right of centerline, 11' AGL/130' MSL. Trees beginning
486' from DER, 459' left of centerline, up to 98'
AGL/217' MSL.

BOONEVILLE/BALDWIN, MS

BOONEVILLE/BALDWIN (8M1)

TAKEOFF MINIMUMS AND (OBSTACLE)
DEPARTURE PROCEDURES
ORIG 07298 (FAA)

NOTE: **Rwy 15**, trees 1250' from DER, 100' right of
centerline, 100' AGL/465' MSL. Trees 3847' from DER,
127' left of centerline, 100' AGL/519' MSL. **Rwy 33**,
road and vehicle 8' from DER, 188' right of centerline,
15' AGL/394' MSL.

BROOKHAVEN, MS

BROOKHAVEN-LINCOLN COUNTY (1R7)

TAKEOFF MINIMUMS AND (OBSTACLE)
DEPARTURE PROCEDURES
ORIG 80234 (FAA)

TAKEOFF MINIMUMS: **Rwy 22**, 500-1.
DEPARTURE PROCEDURE: **Rwy 4**, climb runway
heading to 900 before turning.

BUNKIE, LA

BUNKIE MUNI (2R6)

TAKEOFF MINIMUMS AND (OBSTACLE)
DEPARTURE PROCEDURES
ORIG 09127 (FAA)

NOTE: **Rwy 18**, trees 1404' from DER, 506' right of
centerline, 50' AGL/109' MSL. Vehicle on road 481'
from DER, 28' right of centerline, 15' AGL/74' MSL.

CLARKSDALE, MS

FLETCHER FIELD (CKM)

TAKEOFF MINIMUMS AND (OBSTACLE)
DEPARTURE PROCEDURES
ORIG 08269 (FAA)

NOTE: **Rwy 18**, building 476' from DER, 495' right of
centerline 168' AGL/215' MSL. Vehicle 995' from DER,
502' left of centerline, 165' AGL/190' MSL. Trees
beginning 5619' from DER, 630' left of centerline, 158'
AGL/273' MSL. **Rwy 36**, trees beginning 2258' from
DER, 220' left of centerline, 100' AGL/274' MSL.

22 JUN 2017 to 20 JUL 2017

22 JUN 2017 to 20 JUL 2017

17145

**TAKEOFF MINIMUMS, (OBSTACLE) DEPARTURE PROCEDURES, AND
DIVERSE VECTOR AREA (RADAR VECTORS)**

**TAKEOFF MINIMUMS, (OBSTACLE) DEPARTURE PROCEDURES, AND
DIVERSE VECTOR AREA (RADAR VECTORS)**

17145

CLEVELAND, MS

CLEVELAND MUNI (RNV)
TAKEOFF MINIMUMS AND (OBSTACLE)
DEPARTURE PROCEDURES
AMDT 2 14093 (FAA)

DEPARTURE PROCEDURE: **Rwy 18**, climb heading 178° to 600 before turning eastbound.

NOTE: **Rwy 18**, trees and poles beginning 797' from DER, 29' left and right of centerline, up to 40' AGL/180' MSL. **Rwy 36**, poles beginning 1318' from DER, 66' left of centerline, up to 37' AGL/177' MSL. Tree 1418' from DER, 274' left of centerline, 39' AGL/179' MSL.

COLUMBIA, MS

COLUMBIA-MARION COUNTY (OR0)
TAKEOFF MINIMUMS AND (OBSTACLE)
DEPARTURE PROCEDURES
ORIG 07354 (FAA)

TAKEOFF MINIMUMS: **Rwys 13, 31**, NA-obstacles.
DEPARTURE PROCEDURE: **Rwy 23**, climb heading 234° to 800 before turning left.

NOTE: **Rwy 5**, trees beginning 175' from DER, 414' right of centerline, up to 100' AGL/379' MSL. **Rwy 23**, vehicle on road beginning 133' from DER, 46' right of centerline, 17' AGL/266' MSL. Tree and house beginning 227' from DER, 240' right of centerline, up to 100' AGL/349' MSL. Trees beginning 357' from DER, 273' left of centerline, up to 100' AGL/349' MSL.

COLUMBUS, MS

COLUMBUS-LOWNDES COUNTY (UBS)
TAKEOFF MINIMUMS AND (OBSTACLE)
DEPARTURE PROCEDURES
ORIG-A 11097 (FAA)

TAKEOFF MINIMUMS: **Rwy 18**, 300-1 or std. w/ min. climb of 350' per NM to 500. **Rwy 36**, 500-3 or std. w/ min. climb of 280' per NM to 900.

DEPARTURE PROCEDURE: **Rwys 18, 36**, climb runway heading to 600 before turning.

NOTE: **Rwy 36**, tower 2.5 NM from DER, 3441' left of centerline, 492' AGL/657' MSL.

COLUMBUS AFB (KCBM),

COLUMBUS, MS
TAKEOFF MINIMUMS AND (OBSTACLE)
DEPARTURE PROCEDURES
ORIG 14093

DEPARTURE PROCEDURE: **Rwy 13C**, Standard.

Rwy 31C, Standard with minimum climb of 240 ft/NM to 600 ft or 200-1% or with standard takeoff minimums and a standard 200 ft/NM climb gradient, takeoff must occur no later than 2100 ft prior to departure end of runway.

Rwy 13L, Standard. **Rwy 31L**, Standard with minimum climb of 210 ft/NM to 600 ft or 200-1% or with standard takeoff minimums and a standard 200 ft/NM climb gradient, takeoff must occur no later than 1300 ft prior to departure end of runway. **Rwy 13R**, Standard. **Rwy 31R**, Standard with minimum climb of 240 ft/NM to 600 ft or 200-1% or with standard takeoff minimums and a standard 200 ft/NM climb gradient, takeoff must occur no later than 2100 ft prior to departure end of runway.

TAKEOFF OBSTACLES: **Rwy 13C**, Trees 288' MSL/74' AGL 2967' from DER 1010' left of centerline. Trees 288' MSL/74' AGL 3005' from DER, 223' right of centerline. **Rwy 13R**, Ramp lights 272' MSL/69' AGL 2795' from DER, 766' right of centerline. **Rwy 31C**, Trees 251' MSL/74' AGL 2340' from DER, 942' right of centerline. Trees 251' MSL/74' AGL 2250' from DER, 770' right of centerline. Pylon 348' MSL/157' AGL 1.2 NM from DER, 1104' right of centerline. Pylon 334' MSL/157' AGL 1.0 NM from DER, 2550' right of centerline. **Rwy 31L**, Taxiing aircraft 205' MSL/14' AGL 556' from DER, 281' right of centerline. Taxiing aircraft 204' MSL/14' AGL 554' from DER, 156' left of centerline. Pylon 348' MSL/157' AGL 1.3 NM from DER, 2617' right of centerline. **Rwy 31R**, Taxiing aircraft 197' MSL/14' AGL 80' from DER 472' left of centerline. Trees 251' MSL/74' AGL 2122' from DER, 1104' right of centerline. Pylon 341' MSL/ 157' AGL 1.2 NM from DER, 1560' right of centerline. Pylon 341' MSL/157' AGL 1.1 NM from DER, 2197' right of centerline.

CORINTH, MS

ROSCOE TURNER (CRX)
TAKEOFF MINIMUMS AND (OBSTACLE)
DEPARTURE PROCEDURES
ORIG 08045 (FAA)

NOTE: **Rwy 18**, Vehicle on road 207' from DER, 481' right of centerline, 15' AGL/446' MSL. Trees 305' from DER, 451' left of centerline, up to 71' AGL/500' MSL. Trees 633' from DER, 505' right of centerline, up to 79' AGL/520' MSL. **Rwy 36**, Trees 1099' from DER, 766' right of centerline, up to 86' AGL/480' MSL. Trees 1645' from DER, 751' left of centerline, up to 86' AGL/480' MSL.

22 JUN 2017 to 20 JUL 2017

22 JUN 2017 to 20 JUL 2017

17145

**TAKEOFF MINIMUMS, (OBSTACLE) DEPARTURE PROCEDURES, AND
DIVERSE VECTOR AREA (RADAR VECTORS)**

**TAKEOFF MINIMUMS, (OBSTACLE) DEPARTURE PROCEDURES, AND
DIVERSE VECTOR AREA (RADAR VECTORS)**

17145

DE QUINCY, LA

DE QUINCY INDUSTRIAL AIRPARK (5R8)
TAKEOFF MINIMUMS AND (OBSTACLE)
DEPARTURE PROCEDURES
AMDT 1 15064 (FAA)

TAKEOFF MINIMUMS: **Rwy 34**, 400-2 or std. w/min.
climb of 280' per NM to 600.

NOTE: **Rwy 16**, trees beginning 26' from DER, 362' right of centerline, up to 20' AGL/98' MSL. Trees beginning 1016' from DER, 679' right of centerline up to 70' AGL/145' MSL. Trees beginning 1833' from DER, 574' right of centerline, up to 81' AGL/150' MSL. Trees 2251' from DER, 206' right of centerline, up to 75' AGL/138' MSL. Trees beginning 2277' from DER, 280' left of centerline, up to 82' AGL/145' MSL. Trees 992' from DER, 590' left of centerline, up to 85' AGL/164' MSL. Pole 815' from DER 708' left of centerline 37' AGL/115' MSL. Trees 486' from DER, 538' left of centerline, up to 55' AGL/128' MSL. **Rwy 34**, sign 15' from DER, 214' left of centerline, 8' AGL/81' MSL. NAVAIDs beginning 29' from DER, 110' left of centerline up to 5' AGL/75' MSL. Trees beginning 81' from DER, 341' right of centerline, up to 8' AGL/81' MSL. Pole 138' from DER, 483' right of centerline, 41' AGL/109' MSL. Trees beginning 256' from DER, 521' left of centerline up to 75' AGL/157' MSL. Telephone line 1377' from DER, 293' left of centerline, 40' AGL/119' MSL. Telephone line 1376' from DER, 294' right of centerline, 39' AGL/117' MSL. Trees beginning 1431' from DER, 491' right of centerline, up to 74' AGL/136' MSL.

DE RIDDER, LA

BEAUREGARD RGNL (DRI)
TAKEOFF MINIMUMS AND (OBSTACLE)
DEPARTURE PROCEDURES
AMDT 4 09127 (FAA)

NOTE: **Rwy 14**, trees 1673' from DER, 128' left of centerline, 100' AGL/309' MSL. **Rwy 18**, multiple trees beginning 53' from DER, 222' left of centerline, up to 30' AGL/220' MSL. Multiple trees beginning 152' from DER, 272' right of centerline, up to 73' AGL/263' MSL. **Rwy 32**, multiple trees and bushes beginning 129' from DER, 17' left of centerline, up to 68' AGL/248' MSL. Trees 299' from DER, 190' right of centerline, 26' AGL/216' MSL. **Rwy 36**, pole 563' from DER, 353' left of centerline, 38' AGL/238' MSL. Multiple trees beginning 634' from DER, 1' left of centerline, up to 113' AGL/313' MSL. Multiple trees beginning 557' from DER, 73' right of centerline, up to 99' AGL/299' MSL.

DREW, MS

RULEVILLE-DREW (M37)
TAKEOFF MINIMUMS AND (OBSTACLE)
DEPARTURE PROCEDURES
ORIG 10070 (FAA)

NOTE: **Rwy 18**, trees beginning 215' from DER, 521' left of centerline, up to 100' AGL/229' MSL. **Rwy 36**, trees beginning 3438' from DER, 225' left of centerline, up to 100' AGL/234' MSL.

EUNICE, LA

EUNICE (4R7)
TAKEOFF MINIMUMS AND (OBSTACLE)
DEPARTURE PROCEDURES
AMDT 2 03303 (FAA)

TAKEOFF MINIMUMS: **Rwy 16**, 1100-2½, climb in visual conditions to cross Eunice Airport at or above 1000 MSL before proceeding on course or std. with a min. climb of 280' per NM to 2400. **Rwy 34**, 1100-2½, climb in visual conditions to cross Eunice Airport at or above 1000 MSL before proceeding on course or std. with a min. climb of 220' per NM to 2400.

CAUTION: Unmarked balloon and cable to 15000 in R-3807. **Rwy 16**, 133°/56.1 NM. **Rwy 34**, 132°/55.4 NM.

GALLIANO, LA

SOUTH LAFOURCHE LEONARD MILLER
JR (GAO)

TAKEOFF MINIMUMS AND (OBSTACLE)
DEPARTURE PROCEDURES
ORIG 08269 (FAA)

NOTE: **Rwy 18**, multiple trees beginning 1258' from DER, 661' left of centerline, up to 45' AGL/56' MSL. Multiple trees beginning 127' from DER, 275' right of centerline, up to 45' AGL/53' MSL. **Rwy 36**, tree 14' from DER, 454' right of centerline, up to 35' AGL/45' MSL. Multiple trees beginning 1391' from DER, 449' right of centerline, up to 55' AGL/86' MSL. Multiple trees beginning 2288' from DER, 291' left of centerline, up to 55' AGL/97' MSL.

GONZALES, LA

LOUISIANA RGNL (REG)
TAKEOFF MINIMUMS AND (OBSTACLE)
DEPARTURE PROCEDURES
AMDT 2 17061 (FAA)

NOTE: **Rwy 17**, vehicle 25' from DER, 103' left of centerline, 7' AGL/18' MSL. Vehicle 42' from DER, 119' left of centerline, 9' AGL/20' MSL. Tree 115' from DER, 380' left of centerline, 45' MSL. Tree 131' from DER, 379' right of centerline, 49' MSL. Tree 360' from DER, 515' right of centerline, 61' MSL. Tree 380' from DER, 477' left of centerline, 76' MSL. Trees beginning 836' from DER, 270' right of centerline, up to 115' MSL. **Rwy 35**, Rwy lt 5' from DER, 22' right of centerline, 1' AGL/13' MSL. Rwy lt 6' from DER, 27' left of centerline, 1' AGL/14' MSL. Tree 190' from DER, 379' left of centerline, 26' MSL. Tree 197' from DER, 378' right of centerline, 38' MSL. Trees beginning 679' from DER, 463' left of centerline, up to 76' MSL. Trees beginning 691' from DER, 402' right of centerline, up to 77' MSL. Trees beginning 779' from DER, 395' right of centerline, up to 80' MSL. Trees beginning 863' from DER, 392' right of centerline, up to 81' MSL. Trees beginning 869' from DER, 436' left of centerline, up to 113' MSL. Tree 1008' from DER, 393' right of centerline, 84' MSL. Trees beginning 1031' from DER, 30' right of centerline, up to 110' MSL. Trees beginning 1720' from DER, 31' left of centerline, up to 116' MSL. Tree 2808' from DER, 71' right of centerline, 111' MSL. Trees beginning 2866' from DER, 4' right of centerline, up to 114' MSL. Trees beginning 3654' from DER, 26' left of centerline, up to 120' MSL. Tree 3816' from DER, 420' left of centerline, 125' MSL.

22 JUN 2017 to 20 JUL 2017

22 JUN 2017 to 20 JUL 2017

17145

**TAKEOFF MINIMUMS, (OBSTACLE) DEPARTURE PROCEDURES, AND
DIVERSE VECTOR AREA (RADAR VECTORS)**

**TAKEOFF MINIMUMS, (OBSTACLE) DEPARTURE PROCEDURES, AND
DIVERSE VECTOR AREA (RADAR VECTORS)**

17145

GREENVILLE, MS**GREENVILLE MID-DELTA (GLH)**

TAKEOFF MINIMUMS AND (OBSTACLE)
DEPARTURE PROCEDURES

ORIG-A 13346 (FAA)

DEPARTURE PROCEDURE: **Rwy 18L,18R**, climb heading 177° to 800 before turning.

NOTE: **Rwy 18L**, tree 3995' from DER, 1065' left of centerline, 114' AGL/236' MSL. Tree 3503' from DER, 858 right of centerline, 110' AGL/219' MSL. **Rwy 18R**, tree 1207' from DER, 539' right of centerline, 91' AGL/206' MSL. Tree 3872' from DER, 501' right of centerline, 128' AGL/237' MSL. Tree 3503' from DER, 705' left of centerline, 110' AGL/219' MSL.

GREENWOOD, MS**GREENWOOD-LEFLORE (GWO)**

TAKEOFF MINIMUMS AND (OBSTACLE)
DEPARTURE PROCEDURES

AMDT 7 13066 (FAA)

TAKEOFF MINIMUMS: **Rwy 5**, std. w/min. climb of 255' per NM to 1000, or 1000-2½ for climb in visual conditions.

DEPARTURE PROCEDURE: **Rwy 5**, for climb in visual conditions, cross Greenwood-Leflore airport at or above 1000 before proceeding on course. When executing VCOA, notify ATC prior to departure.

NOTE: **Rwy 5**, trees beginning 95' from DER, 6' left of centerline, up to 49' AGL/240' MSL. Trees beginning 765' from DER, 42' right of centerline, up to 84' AGL/180' MSL. Trees beginning 2812' from DER, left and right of centerline, up to 99' AGL/259' MSL. Trees beginning 1.2 NM from DER, 1608' right of centerline, up to 123' AGL/392' MSL. **Rwy 23**, bushes beginning 137' from DER, 219' left of centerline, up to 24' AGL/160' MSL. Bushes and trees beginning 233' from DER, 20' right of centerline, up to 82' AGL/251' MSL. Trees beginning 1031' from DER, 14' left of centerline, up to 112' AGL/252' MSL. **Rwy 36**, sign 25' from DER, 242' right of centerline, 3' AGL/148' MSL. Trees beginning 743' from DER, 91' left of centerline, up to 95' AGL/257' MSL. Trees beginning 1037' from DER, 662' right of centerline, up to 45' AGL/242' MSL.

GRENADA, MS**GRENADA MUNI (GNF)**

TAKEOFF MINIMUMS AND (OBSTACLE)
DEPARTURE PROCEDURES

AMDT 2 13122 (FAA)

TAKEOFF MINIMUMS: **Rwy 31**, 300-1 or std. w/ min. climb of 240' per NM to 500, or alternatively with standard takeoff minimums and a normal 200' per NM climb gradient, takeoff must occur no later than 1800' prior to DER.

DEPARTURE PROCEDURE: **Rwy 4**, climb heading 051° to 700 before turning left. **Rwy 22**, climb heading 231° to 700 before turning left.

NOTE: **Rwy 4**, trees beginning 320' from DER, 10' left of centerline, up to 100' AGL/299' MSL. Trees beginning 630' from DER, 650' left of centerline, up to 100' AGL/300' MSL. Road and vehicles beginning 45' from DER, from 292' left of centerline to 320' right of centerline, up to 15' AGL/215' MSL. **Rwy 13**, trees beginning 28' from DER, 60' right of centerline, up to 100' AGL/296' MSL. Trees beginning 1110' from DER, 11' left of centerline, up to 100' AGL/293' MSL. **Rwy 22**, trees beginning 940' from DER, 617' right of centerline, up to 100' AGL/290' MSL. Pole and trees 874' from DER, 382' left of centerline, 100' AGL/290' MSL. **Rwy 31**, vehicle on road 2' from DER, 188' right of centerline, 15' AGL/222' MSL. Pole 4749' from DER, 1284' left of centerline, 110' AGL/330' MSL. Trees beginning 192' from DER, 482' right of centerline, up to 100' AGL/359' MSL. Trees beginning 2442' from DER, 575' left of centerline, up to 100' AGL/361' MSL.

GULFPORT, MS**GULFPORT-BILOXI INTL (GPT)**

TAKEOFF MINIMUMS AND (OBSTACLE)
DEPARTURE PROCEDURES

AMDT 6 09183 (FAA)

TAKEOFF MINIMUMS: **Rwy 36**, 300-1¼ or std. with a min. climb of 292' per NM to 300.

DEPARTURE PROCEDURE: **Rwy 36**, climb heading 013° to 700 before proceeding on course.

NOTE: **Rwy 14**, tree 1931' from DER, 627' left of centerline, 71' AGL/90' MSL. Pole 3354' from DER, 1068' right of centerline, 85' AGL/115' MSL. **Rwy 18**, trees beginning 924' from DER, 354' right of centerline, up to 84' AGL/98' MSL. Trees beginning 1383' from DER, 165' left of centerline, up to 52' AGL/71' MSL. Antenna 5411' from DER, 1579' left of centerline, 165' AGL/172' MSL. **Rwy 32**, trees beginning 1586' from DER, left and right of centerline, up to 79' AGL/93' MSL. **Rwy 36**, trees beginning 1391' from DER, 327' right of centerline, up to 82' AGL/96' MSL. Trees beginning 1593' from DER, 348' left of centerline, up to 82' AGL/96' MSL. Crane 4592' from DER, 2673' right of centerline, 142' AGL/151' MSL.

22 JUN 2017 to 20 JUL 2017

22 JUN 2017 to 20 JUL 2017

17145

**TAKEOFF MINIMUMS, (OBSTACLE) DEPARTURE PROCEDURES, AND
DIVERSE VECTOR AREA (RADAR VECTORS)**

**TAKEOFF MINIMUMS, (OBSTACLE) DEPARTURE PROCEDURES, AND
DIVERSE VECTOR AREA (RADAR VECTORS)**

17145

HAMMOND, LA

HAMMOND NORTHSORE RGNL (HDC)
TAKEOFF MINIMUMS AND (OBSTACLE)
DEPARTURE PROCEDURES
AMDT 1 10098 (FAA)

DEPARTURE PROCEDURE: **Rwy 31**, climb heading 312° to 700 before turning left.

NOTE: **Rwy 13**, trees beginning 1260' from DER, 125' left of centerline, up to 119' AGL/163' MSL. Trees beginning 1314' from DER, 186' right of centerline, up to 124' AGL/168' MSL. **Rwy 18**, antenna on building 844' from DER, 239' right of centerline, 22' AGL/66' MSL.

Obstruction light on pole 1020' from DER, 141' right of centerline, 23' AGL/67' MSL. Trees beginning 1556' from DER, 430' left of centerline, up to 92' AGL/136' MSL. Trees beginning 1747' from DER, 64' right of centerline, up to 110' AGL/149' MSL. **Rwy 31**, trees beginning 216' from DER, 13' left of centerline, up to 109' AGL/158' MSL. Trees beginning 566' from DER, 386' right of centerline, up to 100' AGL/154' MSL.

Rwy 36, tree 3072' from DER, 879' left of centerline, 73' AGL/127' MSL. Tree 3585' from DER, 1407' right of centerline, 102' AGL/151' MSL.

HATTIESBURG, MS

HATTIESBURG BOBBY L. CHAIN MUNI
(HBG)

TAKEOFF MINIMUMS AND (OBSTACLE)
DEPARTURE PROCEDURES
AMDT 1 09015 (FAA)

DEPARTURE PROCEDURE: **Rwy 31**, climb heading 309° to 900 before turning west.

NOTE: **Rwy 13**, numerous trees beginning 1184' from DER, 26' left of centerline, up to 111' AGL/251' MSL. Multiple trees beginning 2023' from DER, 49' right of centerline, up to 89' AGL/229'. **Rwy 31**, numerous trees beginning 189' from DER, 111' left of centerline, up to 103' AGL/253' MSL. Multiple trees beginning 894' from DER, 69' right of centerline, up to 84' AGL/234' MSL.

HATTIESBURG/LAUREL, MS

HATTIESBURG-LAUREL RGNL (PIB)
TAKEOFF MINIMUMS AND (OBSTACLE)
DEPARTURE PROCEDURES

DEPARTURE PROCEDURE: **Rwys 18, 36**, climb runway heading to 1000 before turning east.

NOTE: **Rwy 36**, 86' AGL tree 2117' from DER, 911' left of centerline.

HOLLY SPRINGS, MS

HOLLY SPRINGS-MARSHALL COUNTY
(M41)

TAKEOFF MINIMUMS AND (OBSTACLE)
DEPARTURE PROCEDURES
AMDT 1A 14065 (FAA)

NOTE: **Rwy 18**, trees and vertical structure beginning 1' from DER, 249' right of centerline, up to 76' AGL/627' MSL. Trees beginning 182' from DER, 390' left of centerline, up to 85' AGL/636' MSL. Trees and vertical structure beginning 637' from DER, 20' right of centerline, up to 91' AGL/642' MSL. Trees beginning 701' from DER, 63' left of centerline, up to 96' AGL/647' MSL. **Rwy 36**, trees beginning 22' from DER, 283' left of centerline, up to 66' AGL/582' MSL. Pole and trees beginning 501' from DER, 376' right of centerline, up to 56' AGL/572' MSL.

HOUMA, LA

HOUMA-TERREBONNE (HUM)
TAKEOFF MINIMUMS AND (OBSTACLE)
DEPARTURE PROCEDURES
AMDT 5 09183 (FAA)

DEPARTURE PROCEDURE: **Rwy 30**, climb heading 304° to 600 before proceeding on course.

NOTE: **Rwy 12**, trees and equipment building beginning 86' from DER, 254' left of centerline, up to 40' AGL/44' MSL. Ground and tree beginning 220' from DER, 202' right of centerline, up to 29' AGL/33' MSL. **Rwy 18**, trees and poles beginning 923' from DER, 238' left of centerline, up to 100' AGL/109' MSL. Trees beginning 249' from DER, 345' right of centerline, up to 60' AGL/64' MSL. **Rwy 30**, trees beginning 802' from DER, 93' left of centerline, up to 60' AGL/64' MSL. Poles and road beginning 527' from DER, 427' right of centerline, up to 38' AGL/42' MSL. **Rwy 36**, antenna 1589' from DER, 882' left of centerline, 63' AGL/72' MSL. Trees beginning 2894' from DER, 971' right of centerline, up to 100' AGL/109' MSL.

INDIANOLA, MS

INDIANOLA MUNI (IDL)
TAKEOFF MINIMUMS AND (OBSTACLE)
DEPARTURE PROCEDURES
AMDT 1 10266 (FAA)

DEPARTURE PROCEDURE: **Rwy 18**, climb heading 180° to 1800 before turning East. **Rwy 36**, climb heading 360° to 800 before turning East.

NOTE: **Rwy 18**, trees beginning 383' from DER, 75' left of centerline, up to 81' AGL/201' MSL. Trees beginning 385' from DER, 165' right of centerline, up to 90' AGL/210' MSL. **Rwy 36**, fence 37' from DER, 400' left of centerline, 6' AGL/129' MSL. Trees beginning 898' from DER, 684' right of centerline, up to 100' AGL/224' MSL. Trees beginning 1086' from DER, 576' left of centerline, up to 100' AGL/224' MSL.

22 JUN 2017 to 20 JUL 2017

22 JUN 2017 to 20 JUL 2017

17145

**TAKEOFF MINIMUMS, (OBSTACLE) DEPARTURE PROCEDURES, AND
DIVERSE VECTOR AREA (RADAR VECTORS)**

TAKEOFF MINIMUMS, (OBSTACLE) DEPARTURE PROCEDURES, AND DIVERSE VECTOR AREA (RADAR VECTORS)

17145

JACKSON, MS

HAWKINS FIELD (HKS)

TAKEOFF MINIMUMS AND (OBSTACLE)
DEPARTURE PROCEDURES
AMDT 1 10266 (FAA)

TAKEOFF MINIMUMS: **Rwy 11**, 300-1/4 or std. w/ min. climb of 230' per NM to 600. Alternatively, with standard takeoff minimums and a normal 200' per NM climb gradient, takeoff must occur no later than 1800 prior to DER.

DEPARTURE PROCEDURE: **Rwy 11**, climb heading 115° to 900 before proceeding on course. **Rwy 16**, climb heading 159° to 1400 before turning right. **Rwy 29**, climb heading 295° to 1400 before turning left. **Rwy 34**, climb heading 339° to 900 before proceeding on course.

NOTE: **Rwy 11**, trees beginning 1141' from DER, 33' right of centerline, up to 100' AGL/374' MSL. Trees beginning 460' from DER, 155' left of centerline, up to 100' AGL/406' MSL. Tower 5514' from DER, 1566' left of centerline, 164' AGL/483' MSL. **Rwy 16**, trees beginning 1023' from DER, 373' right of centerline, up to 100' AGL/438' MSL. Trees beginning 588' from DER, 27' left of centerline, up to 100' AGL/449' MSL. **Rwy 29**, hangar, 481' from DER, 357' right of centerline, 13' AGL/332' MSL. Light, 880' from DER, 255' left of centerline, 10' AGL/339' MSL. Antenna on hangar, 1065' from DER, 595' right of centerline, 40' AGL/362' MSL. Trees beginning 698' from DER, 186' left of centerline, up to 100' AGL/426' MSL. **Rwy 34** terrain 50' from DER, 316' right of centerline, 345' MSL. Trees, 2700' from DER, 884' left of centerline, up to 100' AGL/410' MSL.

JACKSON-MEDGAR WILEY EVERS
INTL (JAN)

TAKEOFF MINIMUMS AND (OBSTACLE)
DEPARTURE PROCEDURES
AMDT 2 13262 (FAA)

TAKEOFF MINIMUMS: **Rwy 16R**, 200-1/4 or std. w/ min. climb of 227' per NM to 600.

NOTE: **Rwy 16L**, trees beginning 1130' from DER, 722' left of centerline, up to 68' AGL/408' MSL. Trees, beginning 1231' from DER, 321' left of centerline, up to 81' AGL/421' MSL. Trees beginning 2323' from DER, 158' left of centerline, up to 123' AGL/459' MSL. Tree 3159' from DER, 169' right of centerline, 108' AGL/435' MSL. **Rwy 16R**, trees beginning 1411' from DER, 766' left of centerline, up to 65' AGL/405' MSL. Tree 3824' from DER, 1210' left of centerline, 86' AGL/426' MSL. Trees 5211' from DER, 1882' left of centerline, up to 85' AGL/482' MSL. Trees beginning 2648' from DER, 537' right of centerline, up to 95' AGL/425' MSL. **Rwy 34L**, trees beginning 2165' from DER, left and right of centerline, up to 120' AGL/402' MSL. **Rwy 34R**, trees beginning 3117' from DER, 953' left of centerline, up to 108' AGL/396' MSL. Trees beginning 2273' from DER, 1002' right of centerline, up to 93' AGL/374' MSL.

JENNINGS, LA

JENNINGS (3R7)

TAKEOFF MINIMUMS AND (OBSTACLE)
DEPARTURE PROCEDURES
AMDT 2A 10098 (FAA)

TAKEOFF MINIMUMS: **Rwy 13**, 300-1 or std. with a min climb of 393' per NM to 300. **Rwys 17,35**, NA.

NOTE: **Rwy 8**, multiple poles 1080' from DER, 260' left of centerline, 40' AGL/62' MSL. **Rwy 13**, trees beginning 690' from DER, 262' left of centerline, up to 116' AGL/141' MSL. Tank 3428' from DER, 1072' left of centerline, 156' AGL/181' MSL. Water tower, 3492' from DER, 1089' left of centerline, 172' AGL/197' MSL. Transmission line and trees beginning 766' from DER, 622' right of centerline, up to 96' AGL/119' MSL. **Rwy 26**, trees 1080' from DER, 45' AGL/55' MSL. **Rwy 31**, fence 140' from DER, 15' AGL/32' MSL.

JONESBORO, LA

JONESBORO (F88)

TAKEOFF MINIMUMS AND (OBSTACLE)
DEPARTURE PROCEDURES
ORIG 12152 (FAA)

NOTE: **Rwy 18**, trees beginning 211' from DER, 352' right of centerline, up to 100' AGL/349' MSL. Trees beginning 270' from DER, 462' left of centerline, up to 100' AGL/369' MSL. **Rwy 36**, trees beginning 200' from DER, 386' left of centerline, up to 100' AGL/339' MSL. Trees beginning 375' from DER, 502' right of centerline, up to 100' AGL/339' MSL.

KEESLER AFB (KBIX)

BILLOXI, MS

TAKEOFF MINIMUMS AND (OBSTACLE)
DEPARTURE PROCEDURES
13206

TAKE-OFF OBSTACLES: **Rwy 3**: Light pole 977' from DER, 764' right of centerline, 63' AGL/71' MSL. Trees 1625' from DER, 727' right of centerline, 51' AGL/62' MSL. Trees 1977' from DER, 728' right of centerline, 65' MSL/76' MSL. **Rwy 21**: Trees 1903' from DER, 669' right of centerline, 71' AGL/101' MSL. Trees 2704' from DER, 730' right of centerline, 70' AGL/96' MSL. Pylon-street light 1193' from DER, 444' right of centerline, 30' AGL/61' MSL. Trees 1803' from DER, 658' left of centerline, 43' AGL/69' MSL. Tower 2631' from DER, 1034' left of centerline, 58' AGL/82' MSL. Multiple power poles 2670' from DER, 893' left of centerline, 71' AGL/91' MSL.

KOSCIUSKO, MS

KOSCIUSKO-ATTALA COUNTY (OSX)

TAKEOFF MINIMUMS AND (OBSTACLE)
DEPARTURE PROCEDURES
ORIG 05132 (FAA)

NOTE: **Rwy 14**, trees 1054' from DER, 503' left of centerline, 100' AGL/559' MSL. Trees 1172' from DER, 555' right of centerline, 100' AGL/559' MSL. Terrain 18' from DER, 91' right of centerline, 473' MSL. Terrain 68' from DER, 485' right of centerline, 473' MSL. **Rwy 32**, trees 1676' from DER, 288' right of centerline, 100' AGL/619' MSL. Trees 1341' from DER, 231' left of centerline, 100' AGL/609' MSL. Terrain 129' from DER, 139' right of centerline, 502' MSL. Terrain 182' from DER, 532' right of centerline, 493' MSL. Terrain 352' from DER, 344' right of centerline, 496' MSL. Terrain 79' from DER, 254' left of centerline, 486' MSL. Terrain 525' from DER, 156' right of centerline, 496' MSL. Terrain 302' from DER, 49' left of centerline, 489' MSL.

17145

TAKEOFF MINIMUMS, (OBSTACLE) DEPARTURE PROCEDURES, AND DIVERSE VECTOR AREA (RADAR VECTORS)

**TAKEOFF MINIMUMS, (OBSTACLE) DEPARTURE PROCEDURES, AND
DIVERSE VECTOR AREA (RADAR VECTORS)**

17145

LAFAYETTE, LA

LAFAYETTE RGNL/PAUL FOURNET
FIELD (LFT)

TAKEOFF MINIMUMS AND (OBSTACLE)
DEPARTURE PROCEDURES
AMDT 2A 15204 (FAA)

NOTE: **Rwy 4L**, trees beginning 257' from DER, 268' left of centerline, up to 100' AGL/139' MSL. Fence 2506' from DER, 682' left of centerline, 121' AGL/163' MSL. Pole 2978' from DER, 1061' left of centerline, 121' AGL/163' MSL. Obstruction lights beginning 155' from DER, 251' right of centerline, up to 54' AGL/83' MSL. **Rwy 4R**, vehicle on road 76' from DER, 498' left of centerline, 15' AGL/44' MSL. Trees beginning 815' from DER, 110' left of centerline, up to 75' AGL/94' MSL. Light on pole 912' from DER, 738' left of centerline, 32' AGL/71' MSL. Vehicle on road 25' from DER, 272' right of centerline, 15' AGL/44' MSL. Trees beginning 31' from DER, 268' right of centerline, up to 100' AGL/103' MSL. **Rwy 11**, vehicle on road 37' from DER, 302' left of centerline, 15' AGL/48' MSL. Trees beginning 553' from DER, 128' left of centerline, up to 87' AGL/91' MSL. Vehicle on road 20' from DER, 34' right of centerline, 15' AGL/49' MSL. Trees beginning 522' from DER, 27' right of centerline, up to 83' AGL/87' MSL. **Rwy 22L**, poles beginning 1282' from DER, 62' left of centerline, up to 52' AGL/91' MSL. Trees beginning 1454' from DER, 97' left of centerline, up to 100' AGL/106' MSL. Terrain and trees beginning 95' from DER, 22' right of centerline, up to 100' AGL/129' MSL. Railroad 875' from DER, 629' right of centerline, 23' AGL/63' MSL. poles beginning 899' from DER, 248' right of centerline, up to 50' AGL/89' MSL. **Rwy 22R**, tower 2544' from DER, 25' left of centerline, 104' AGL/142' MSL. Trees, buildings, obstruction lights and antenna beginning 152' from DER, 268' right of centerline, up to 104' AGL/142' MSL. **Rwy 29**, trees, towers, poles beginning 925' from DER, 5' left of centerline, up to 110' AGL/150' MSL. Vehicle on road 12' from DER, 403' right of centerline, 15' AGL/48' MSL. Trees, towers and poles beginning 63' from DER, 68' right of centerline, up to 130' AGL/165' MSL.

LAKE CHARLES, LA

CHENNAULT INTL (CWF)
TAKEOFF MINIMUMS AND (OBSTACLE)
DEPARTURE PROCEDURES
ORIG 10154 (FAA)

TAKEOFF MINIMUMS: **Rwy 33**, 300-1¼ or std. w/ min. climb of 205' per NM to 300. Alternatively, with standard TAKEOFF minimums and a normal 200'/NM climb gradient, TAKEOFF must occur no later than 1200' prior to DER.

NOTE: **Rwy 15**, trees beginning 1114' from DER, 670' left of centerline, up to 51' AGL/70' MSL. Trees beginning 1261' from DER, 380' right of centerline, up to 62' AGL/81' MSL. **Rwy 33**, tanks 5977' from DER, 1577' right of centerline, 156' AGL/170' MSL. Trees beginning 1763' from DER, 685' left of centerline, up to 71' AGL/85' MSL. Trees beginning 1202' from DER, 399' right of centerline, up to 52' AGL/71' MSL.

LAKE CHARLES RGNL (LCH)
TAKEOFF MINIMUMS AND (OBSTACLE)
DEPARTURE PROCEDURES

ORIG 11125 (FAA)

NOTE: **Rwy 5**, antenna 38' from DER, 396' right of centerline, 8' AGL/23' MSL. Vehicle on road 457' from DER, 605' left of centerline, up to 15' AGL/34' MSL. Wire on pole 647' from DER, 530' left of centerline, 30' AGL/50' MSL. Transmission pole 707' from DER, 602' right of centerline, 42' AGL/57' MSL. Vehicle on road 710' from DER, 428' left of centerline, 15' AGL/33' MSL. Transmission pole 767' from DER, 531' left of centerline, 31' AGL/46' MSL. Transmission pole 825' from DER, 454' right of centerline, 32' AGL/47' MSL. Pole 862' from DER, 485' right of centerline, 18' AGL/38' MSL. Wire on pole 863' from DER, 485' right of centerline, 34' AGL/49' MSL. **Rwy 23**, multiple trees beginning 19' from DER, left and right of centerline, up to 73' AGL/87' MSL. Pole 1112' from DER, 130' left of centerline, 14' AGL/50' MSL. Poles beginning 631' from DER, 283' right of centerline, up to 22' AGL/44' MSL. **Rwy 33**, tree 1225' from DER, 622' left of centerline, 34' AGL/44' MSL.

LAUREL, MS

HESLER-NOBLE FIELD (LUL)
TAKEOFF MINIMUMS AND (OBSTACLE)
DEPARTURE PROCEDURES

AMDT 1 82175 (FAA)

DEPARTURE PROCEDURE: **Rwy 13**, climb runway heading to 500 before turning.

LEESVILLE, LA

LEESVILLE (L39)
TAKEOFF MINIMUMS AND (OBSTACLE)
DEPARTURE PROCEDURES

ORIG 11293 (FAA)

NOTE: **Rwy 18**, tree 26' from DER, 78' left of centerline, 100' AGL/359' MSL. Trees beginning 12' from DER, 210' right of centerline, up to 100' AGL/389' MSL. **Rwy 36**, trees beginning 262' from DER, 396' left of centerline, 47' AGL/336' MSL. Trees beginning 180' from DER, 130' right of centerline, up to 58' AGL/347' MSL.

22 JUN 2017 to 20 JUL 2017

22 JUN 2017 to 20 JUL 2017

17145

**TAKEOFF MINIMUMS, (OBSTACLE) DEPARTURE PROCEDURES, AND
DIVERSE VECTOR AREA (RADAR VECTORS)**

TAKEOFF MINIMUMS, (OBSTACLE) DEPARTURE PROCEDURES, AND DIVERSE VECTOR AREA (RADAR VECTORS)

17145

LEXINGTON, MS

C. A. MOORE (19M)

TAKEOFF MINIMUMS AND (OBSTACLE)

DEPARTURE PROCEDURES

ORIG 83160 (FAA)

DEPARTURE PROCEDURE: **Rwy 19**, climb runway heading to 1000 before turning.

LOUISVILLE, MS

LOUISVILLE- WINSTON COUNTY (LMS)

TAKEOFF MINIMUMS AND (OBSTACLE)

DEPARTURE PROCEDURES

AMDT 2A 08325 (FAA)

TAKEOFF MINIMUMS: **Rwy 17**, 500-2¼ or std. with a min. climb of 400' per NM to 1100.DEPARTURE PROCEDURE: **Rwy 17**, climb heading 170° to 1100 before turning left.NOTE: **Rwy 17**, tower 1.7 NM from DER, 2209 left of centerline, 410' AGL/950' MSL.

MADISON, MS

BRUCE CAMPBELL FIELD (MBO)

TAKEOFF MINIMUMS AND (OBSTACLE)

DEPARTURE PROCEDURES

AMDT 1 10098 (FAA)

TAKEOFF MINIMUMS: **Rwy 35**, 300-2 or std. w/ min. climb of 267' per NM to 700, or alternatively, with standard TAKEOFF minimums and a normal 200' per NM climb gradient. TAKEOFF must occur no later than 1400' prior to DER.NOTE: **Rwy 17**, trees 524' from DER, 464' right of centerline, 100' AGL/399' MSL. **Rwy 35**, house 1324' from DER, 619' left of centerline, 20' AGL/349' MSL. Vehicle on road 2178' from DER, 389' left of centerline, up to 17' AGL/350' MSL.

MAGEE, MS

MAGEE MUNI (17M)

TAKEOFF MINIMUMS AND (OBSTACLE)

DEPARTURE PROCEDURES

ORIG 14149 (FAA)

NOTE: **Rwy 18**, trees beginning abeam DER, 201' left of centerline, up to 100' AGL/649' MSL. Trees beginning abeam DER, 205' right of centerline, up to 100' AGL/649' MSL. Trees 562' from DER, 577' right of centerline, up to 100' AGL/659' MSL. Trees beginning 1217' from DER, left and right of centerline, up to 100' AGL/659' MSL. **Rwy 36**, trees beginning abeam DER, 165' right of centerline, up to 100' AGL/659' MSL. Vehicle on road 411' from DER, 423' left of centerline, up to 15' AGL/565' MSL. Trees 621' from DER, 343' left of centerline, up to 100' AGL/659' MSL. Trees 1160' from DER, 447' right of centerline, up to 100' AGL/659' MSL.

MANSFIELD, LA

C E 'RUSTY' WILLIAMS (3F3)

TAKEOFF MINIMUMS AND (OBSTACLE)

DEPARTURE PROCEDURES

ORIG 11013 (FAA)

NOTE: **Rwy 18**, trees beginning 1182' from DER, left and right of centerline, up to 100' AGL/459' MSL. **Rwy 36**, trees beginning 116' from DER, left and right of centerline, up to 100' AGL/439' MSL.

MANY, LA

HART (3R4)

TAKEOFF MINIMUMS AND (OBSTACLE)

DEPARTURE PROCEDURES

ORIG-A 08185 (FAA)

TAKEOFF MINIMUMS: **Rwy 12**, 600-3 or std. with a min. climb of 250' per NM to 900.DEPARTURE PROCEDURE: **Rwy 12**, climb heading 117° to 1100 before proceeding on course.NOTE: **Rwy 12**, trees beginning 1' from DER, 594' left to 598' right of centerline, up to 100' AGL/385' MSL. Power line/poles beginning 1198' from DER, 309' right of centerline, up to 58' AGL/354' MSL. **Rwy 30**, trees beginning 74' from DER, 781' left to 509' right of centerline, up to 100' AGL/391' MSL. Power line/pole 484' from DER, 318' right of centerline, 62' AGL/358' MSL.

MARKS, MS

SELFS (MMS)

TAKEOFF MINIMUMS AND (OBSTACLE)

DEPARTURE PROCEDURES

AMDT 1 12264 (FAA)

NOTE: **Rwy 2**, vehicles on road beginning 3' from DER, 210' left of centerline, up to 15' AGL/161' MSL. Vehicles on road, building, and poles beginning 51' from DER, 4' right of centerline, up to 38' AGL/195' MSL. Trees beginning 1171' from DER, 32' left of centerline, up to 110' AGL/265' MSL. Trees beginning 1071' from DER, 4' right of centerline, up to 110' AGL/265' MSL. **Rwy 20**, trees beginning 44' from DER, 389' right of centerline, up to 85' AGL/238' MSL. Trees 3684' from DER, 550' right of centerline, up to 106' AGL/263' MSL.

MARKSVILLE, LA

MARKSVILLE MUNI (MKV)

TAKEOFF MINIMUMS AND (OBSTACLE)

DEPARTURE PROCEDURES

ORIG 11293 (FAA)

NOTE: **Rwy 4**, light pole 61' from DER, 459' right of centerline, 5' AGL/84' MSL. Power pole 287' from DER, 315' right of centerline, 35' AGL/111' MSL. Water tower 3870' from DER, 1134' left of centerline, 148' AGL/217' MSL. Tree 1504' from DER, 374' left of centerline, 88' AGL/164' MSL. Trees beginning 465' from DER, 148' right of centerline, up to 110' AGL/183' MSL. **Rwy 22**, trees beginning 248' from DER, 373' left of centerline, up to 100' AGL/173' MSL. Trees beginning 2571' from DER, 1008' right of centerline, up to 100' AGL/166' MSL.

22 JUN 2017 to 20 JUL 2017

22 JUN 2017 to 20 JUL 2017

17145

TAKEOFF MINIMUMS, (OBSTACLE) DEPARTURE PROCEDURES, AND DIVERSE VECTOR AREA (RADAR VECTORS)

TAKEOFF MINIMUMS, (OBSTACLE) DEPARTURE PROCEDURES, AND DIVERSE VECTOR AREA (RADAR VECTORS)

17145

MCCOMB, MS

MCCOMB/PIKE COUNTY/JOHN E. LEWIS
FIELD (MCB)

TAKEOFF MINIMUMS AND (OBSTACLE)
DEPARTURE PROCEDURES
ORIG 09183 (FAA)

NOTE: **Rwy 15**, trees beginning 89' from DER, 91' right of centerline, up to 100' AGL/509' MSL. Trees beginning 476' from DER, 83' left of centerline, up to 100' AGL/475' MSL. **Rwy 33**, tree 1440' from DER, 49' left of centerline, 59' AGL/488' MSL.

MERIDIAN, MS

KEY FIELD (MEI)

TAKEOFF MINIMUMS AND (OBSTACLE)
DEPARTURE PROCEDURES
AMDT 6 16007 (FAA)

TAKEOFF MINIMUMS: **Rwy 22**, 300-1½ or std. w/ min. climb of 280' per NM to 700.

DEPARTURE PROCEDURE: **Rwy 4**, climb heading 046° to 1000 before turning right.

NOTE: **Rwy 1**, tree 323' from DER, 440' right of centerline, 28' AGL/308' MSL. Vehicles on road 1196' from DER, 421' left of centerline, 17' AGL/341' MSL. Trees beginning 1435' from DER, 413' left of centerline, up to 90' AGL/389' MSL. Trees, tank, and tower beginning 2201' from DER, left and right of centerline, up to 80' AGL/399' MSL. Trees beginning 3688' from DER, 334' left of centerline, up to 104' AGL/403' MSL. **Rwy 4**, poles and trees beginning 70' from DER, 278' right of centerline, up to 39' AGL/335' MSL. Poles, trees, and building beginning 988' from DER, 256' right of centerline, up to 51' AGL/350' MSL. Tree 1817' from DER, 940' right of centerline, 59' AGL/358' MSL. Fence 34' from DER, 276' left of centerline, 8' AGL/305' MSL. Pole, light on pole, tank and railing on tank beginning 863' from DER, up to 32' AGL/330' MSL. Trees beginning 2493' from DER, 65' left of centerline, up to 80' AGL/379' MSL. **Rwy 19**, tower and antenna 481' from DER, 570' left of centerline, 32' AGL/312' MSL. Tree 1893' from DER, 934' right of centerline, 101' AGL/380' MSL. Tree 2660' from DER, 1162' left of centerline, 116' AGL/395' MSL. **Rwy 22**, trees beginning 1328' from DER, 540' right of centerline, up to 99' AGL/378' MSL. Trees beginning 1621' from DER, left and right of centerline, up to 108' AGL/387' MSL. Trees beginning 4365' from DER, 317' right of centerline, up to 62' AGL/441' MSL. Trees beginning 4519' from DER, left and right of centerline, up to 48' AGL/447' MSL. Trees beginning 5568 from DER, 1354 right of centerline, up to 55' AGL/454' MSL. Trees beginning 5650' from DER, 1273' right of centerline, up to 79' AGL/478' MSL. Trees beginning 5702' from DER, left and right of centerline, up to 69' AGL/488' MSL. Trees beginning 1.1 NM from DER, 1236' right of centerline, up to 60' AGL/499' MSL. Trees beginning 1.2 NM from DER, 1490' right of centerline, up to 66' AGL/505' MSL. Trees beginning 1.2 NM from DER, 712' right of centerline, up to 77' AGL/536' MSL.

MERIDIAN NAS (MC CAIN FIELD) (KNMM)

MERIDIAN, MS

TAKEOFF MINIMUMS AND (OBSTACLE)
DEPARTURE PROCEDURES

16147

TAKEOFF MINIMUMS: **Rwy 1R**, 300-1½, or standard with minimum climb of 215 ft/NM to 800. **Rwy 19R**, 200-2, or standard with minimum climb of 219ft/NM to 800.

TAKEOFF OBSTACLES: **Rwy 1R**, terrain 2709' from DER, 1138' left of centerline, 0' AGL/399' MSL. Terrain 50' from DER, 500' right of centerline, 330' MSL. Terrain 63' from DER, 517' right of centerline, 330' MSL. Terrain 381' from DER, 600' left of centerline, 337' MSL. Terrain 403' from DER, 608' left of centerline, 338' MSL. Terrain 427' from DER, 614' left of centerline, 339' MSL. Terrain 614' from DER, 617' left of centerline, 344' MSL. Terrain 617' from DER, 665' left of centerline, 345' MSL. Terrain 644' from DER, 600' left of centerline, 344' MSL. Terrain 656' from DER, 676' left of centerline, 346' MSL. Terrain and tree 3148' from DER, 954' left of centerline, 0' AGL/399' MSL. Terrain and tree 1.1 NM from DER, 4388' left of centerline, 0' AGL/499' MSL. **Rwy 19R**, Terrain and tree 4388' from DER, 1107' left of centerline, 70' AGL/349' MSL. Terrain and tree 5309' from DER, 1235' left of centerline, 105' AGL/384' MSL. Terrain 63' from DER, 517' right of centerline, 256' MSL. Terrain 50' from DER, 500' right of centerline, 256' MSL. Terrain and tree 1.6 NM from DER, 1203' right of centerline, 100' AGL/471' MSL. Terrain and tree 1.2 NM from DER, 248' right of centerline, 85' AGL/424' MSL. **Rwy 10**, Terrain 63' from DER, 517' right of centerline, 306' MSL. Terrain 50' from DER, 500' right of centerline, 306' MSL. **Rwy 28**, antenna 1661' from DER, 90' left of centerline, 0' AGL/338' MSL.

MINDEN, LA

MINDEN (MNE)

TAKEOFF MINIMUMS AND (OBSTACLE)
DEPARTURE PROCEDURES

ORIG 10322 (FAA)

NOTE: **Rwy 1**, trees beginning 2' from DER, 134' left of centerline, up to 116' AGL/383' MSL. Trees beginning 791' from DER, 68' right of centerline, up to 104' AGL/383' MSL. **Rwy 19**, trees beginning 232' from DER, 46' left of centerline, up to 103' AGL/352' MSL. Trees beginning 192' from DER, 12' right of centerline, up to 116' AGL/365' MSL. Poles beginning 1234' from DER, 226' right of centerline, up to 69' AGL/318' MSL.

17145

TAKEOFF MINIMUMS, (OBSTACLE) DEPARTURE PROCEDURES, AND DIVERSE VECTOR AREA (RADAR VECTORS)

**TAKEOFF MINIMUMS, (OBSTACLE) DEPARTURE PROCEDURES, AND
DIVERSE VECTOR AREA (RADAR VECTORS)**

17145

MONROE, LA

MONROE RGNL (MLU)

TAKEOFF MINIMUMS AND (OBSTACLE)

DEPARTURE PROCEDURES

AMDT 5 05188 (FAA)

DEPARTURE PROCEDURE: **Rwy 22**, climb via heading 222° to 900 before turning west. **Rwy 32**, climb via heading 317° to 900 before turning west. **Rwy 36**, climb via heading 357° to 900 before turning west.

NOTE: **Rwy 4**, tree 3535' from DER, 1136' left of centerline, 98' AGL/177' MSL. Tree 995' from DER, 726' left of centerline, 66' AGL/142' MSL. Tree 2423' from DER, 903' right of centerline, 65' AGL/141' MSL. Tree 1765' from DER, 773' right of centerline, 44' AGL/120' MSL. **Rwy 14**, tree 1409' from DER, 770' left of centerline, 96' AGL/162' MSL. **Rwy 18**, tree 1614' from DER, 242' right of centerline, 68' AGL/137' MSL. Tree 1649' from DER, 45' right of centerline, 71' AGL/140' MSL. Tree 1659' from DER, 112' left of centerline, 77' AGL/146' MSL. Tree 1696' from DER, 619' left of centerline, 72' AGL/138' MSL. Tree 2149' from DER, 102' right of centerline, 76' AGL/145' MSL. **Rwy 22**, sign 99' from DER, 959' right of centerline, 14' AGL/83' MSL. Tree 2613' from DER, 1052' right of centerline, 104' AGL/170' MSL. **Rwy 32**, tree 2361' from DER, 7' left of centerline, 77' AGL/160' MSL. Tree 1781' from DER, 342' right of centerline, 66' AGL/149' MSL. Tree 1709' from DER, 302' right of centerline, 78' AGL/161' MSL. Tree 2103' from DER, 325' left of centerline, 73' AGL/156' MSL. Light pole 384' from DER, 491' left of centerline, 18' AGL/97' MSL. **Rwy 36**, antenna 3728' from DER, 599' right of centerline, 107' AGL/190' MSL. Tower 3526' from DER, 478' right of centerline, 100' AGL/179' MSL. Tree 2756' from DER, 129' right of centerline, 68' AGL/151' MSL.

NATCHEZ, MS

HARDY-ANDERS FIELD NATCHEZ-

ADAMS COUNTY (HEZ)

TAKEOFF MINIMUMS AND (OBSTACLE)

DEPARTURE PROCEDURES

ORIG 07354 (FAA)

NOTE: **Rwy 13**, multiple trees beginning 1445' from DER, 226' left of centerline, up to 101' AGL/380' MSL. Multiple trees beginning 17' from DER, 301' right of centerline, up to 99' AGL/334' MSL. **Rwy 18**, multiple trees beginning 1060' from DER, 162' left of centerline, up to 93' AGL/372' MSL. Multiple trees beginning 788' from DER, 374' right of centerline, up to 90' AGL/369' MSL. **Rwy 31**, multiple trees beginning 1320' from DER, 736' left of centerline, up to 105' AGL/364' MSL. Trees 2129' from DER, 813' right of centerline, 81' AGL/340' MSL. **Rwy 36**, multiple trees beginning 935' from DER, 327' left of centerline, up to 47' AGL/306' MSL. Trees 473' from DER, 517' right of centerline, 79' AGL/338' MSL.

NATCHITOCHE, LA

NATCHITOCHE RGNL (IER)

TAKEOFF MINIMUMS AND (OBSTACLE)

DEPARTURE PROCEDURES

AMDT 7 14205 (FAA)

TAKEOFF MINIMUMS: **Rwy 25**, 300-1½ or std. w/min. climb of 336' per NM to 600. **Rwy 35**, std. w/min. climb of 202' per NM to 800, or alternatively, with standard takeoff minimums and normal 200' per NM climb gradient, takeoff must occur no later than 1300' prior to DER.

DEPARTURE PROCEDURE: **Rwy 35**, climb heading 342° to 700 before turning.

NOTE: **Rwy 17**, building, poles, beginning 90' from DER, 359' right of centerline, up to 32' AGL/142' MSL, tree 2573' from DER, 1022' right of centerline, 94' AGL/204' MSL. **Rwy 25**, tower 1.3 NM from DER, 632' right of centerline, 205' AGL/385' MSL. **Rwy 35**, light pole 1975' from DER, 418' right of centerline, 66' AGL/180' MSL. Trees beginning 1007' from DER, 311' right of centerline, up to 72' AGL/188' MSL.

NEW ALBANY, MS

NEW ALBANY-UNION COUNTY (M72)

TAKEOFF MINIMUMS AND (OBSTACLE)

DEPARTURE PROCEDURES

TAKEOFF MINIMUMS: **Rwy 18**, std. w/min. climb of 245' per NM to 900, or 500-2¼ w/min. climb of 207' per NM to 1000, or alternatively, w/ std. takeoff minimums and a normal 200'/NM climb gradient, takeoff must occur no later than 1500' prior to DER, or 800-2½ for climb in visual conditions.

DEPARTURE PROCEDURE: **Rwy 18**, for climb in visual conditions: Cross New Albany-Union County airport at or above 1100 before proceeding on course.

NOTE: **Rwy 18**, multiple trees beginning 146' from DER, 158' left of centerline, up to 100' AGL/519' MSL. Multiple trees beginning 387' from DER, 565' right of centerline, up to 100' AGL/499' MSL. **Rwy 36**, multiple trees beginning 467' from DER, 524' left of centerline, up to 100' AGL/499' MSL. Multiple trees beginning 2000' from DER, on centerline, up to 100' AGL/546' MSL.

NEW IBERIA, LA

ACADIANA RGNL (ARA)

TAKEOFF MINIMUMS AND (OBSTACLE)

DEPARTURE PROCEDURES

AMDT 1 17117 (FAA)

TAKEOFF MINIMUMS: **Rwy 17W, 35W**, NA - environmental.

NOTE: **Rwy 17**, tree 41' from DER, 497' right of centerline, 12' AGL/32' MSL.

22 JUN 2017 to 20 JUL 2017

22 JUN 2017 to 20 JUL 2017

17145

**TAKEOFF MINIMUMS, (OBSTACLE) DEPARTURE PROCEDURES, AND
DIVERSE VECTOR AREA (RADAR VECTORS)**

TAKEOFF MINIMUMS, (OBSTACLE) DEPARTURE PROCEDURES, AND DIVERSE VECTOR AREA (RADAR VECTORS)

17145

NEW ORLEANS, LA

LAKEFRONT (NEW)

TAKEOFF MINIMUMS AND (OBSTACLE) DEPARTURE PROCEDURES

AMDT 1 11013 (FAA)

TAKEOFF MINIMUMS: **Rwy 18R**, std. w/ min. climb of 204' per NM to 1400, or alternatively, with standard takeoff minimums and a normal 200' per NM climb gradient, takeoff must occur no later than 1700' prior to DER.

DEPARTURE PROCEDURE: **Rwy 9**, climb heading 087° to 1400 before turning right. **Rwys 18L, 18R**, climb heading 177° to 1400 before turning left.

NOTE: **Rwy 9**, obstruction light on hangar 80' from DER, 419' right of centerline, 48' AGL/52' MSL. Obstruction lights on hangars, vehicles on road, and light poles beginning 288' from DER, 162' left of centerline, up to 68' AGL/72' MSL. Trees beginning 840' from DER, 222' right of centerline, up to 69' AGL/73' MSL. Light pole 2491' from DER, 254' left of centerline, 68' AGL/72' MSL. **Rwy 18L**, antenna 334' from DER, 418' left of centerline, 38' AGL/42' MSL. Rotating beacon 1451' from DER, 569' left of centerline, 94' AGL/98' MSL. Obstruction light on hangar 2035' from DER, 35' right of centerline, 58' AGL/62' MSL. **Rwy 18R**, obstruction light, pole, tree, vehicles on road, and train on tracks beginning 101' from DER, 175' left centerline, up to 38' AGL/45' MSL. Obstruction light 106' from DER, on centerline, 12' AGL/19' MSL. Vehicles on road 296' from DER, on centerline, 15' AGL/22' MSL. Train on tracks 474' from DER, on centerline, 23' AGL/35' MSL. Obstruction lights beginning 484' from DER, 504' right of centerline, up to 40' AGL/47' MSL. Tree 677' from DER, 115' right of centerline, 32' AGL/39' MSL. Poles beginning 709' from DER, 524' right of centerline, up to 44' AGL/51' MSL. Pole, elevator, obstruction light on silo, and building beginning 1427' from DER, 421' right of centerline, up to 87' AGL/92' MSL. Antenna 2817' from DER, 953' left of centerline, 105' AGL/101' MSL. Tower 2943' from DER, 727' left of centerline, 103' AGL/100' MSL. Multiple poles and towers beginning 3165' from DER, left and right of centerline, up to 106' AGL/111' MSL. Tower 2.3 NM from DER, 3397' left of centerline, 369' AGL/373' MSL. **Rwy 27**, boats 300' from DER, left to right of centerline, up to 50' MSL. Obstruction lights on seawall 279' from DER, left to right of centerline, up to 11' AGL/15' MSL. **Rwy 36L**, pier 63' from DER, 7' right of centerline, 6' AGL/10' MSL. **Rwy 36R**, boats 350' from DER, left to right of centerline, up to 50' MSL.

NEW ORLEANS, LA (CON'T)

LOUIS ARMSTRONG NEW ORLEANS INTL (MSY)

TAKEOFF MINIMUMS AND (OBSTACLE) DEPARTURE PROCEDURES

AMDT 2 15288 (FAA)

NOTE: **Rwy 2**, multiple vehicles on roads beginning 3' from DER, 437' right of centerline, up to 26' AGL/28' MSL. Multiple trees beginning 493' from DER, 542' right of centerline, up to 38' AGL/40' MSL. Multiple poles beginning 831' from DER, 583' left of centerline, up to 34' AGL/36' MSL. Multiple signs beginning 906' from DER, 235' right of centerline, up to 49' AGL/51' MSL. Multiple buildings beginning 1369' from DER, 679' right of centerline, up to 48' AGL/50' MSL. Multiple trees beginning 1555' from DER, 574' left of centerline, up to 45' AGL/47' MSL. Antenna 1888' from DER, 692' right of centerline, 49' AGL/51' MSL. Obstruction light 1822' from DER, 834' right of centerline, 64' AGL/66' MSL. Crane 2412' from DER, 487' left of centerline, 81' AGL/83' MSL. **Rwy 11**, obstruction light 623' from DER, 620' right of centerline, 21' AGL/25' MSL. Pole 936' from DER, 663' right of centerline, 25' AGL/29' MSL. Multiple trees beginning 1051' from DER, 37' left of centerline, up to 96' AGL/100' MSL. Multiple trees beginning 1919' from DER, 157' right of centerline, up to 81' AGL/85' MSL. **Rwy 20**, vehicle on road 201' from DER, 458' left of centerline, 29' AGL/30' MSL. Sign 708' from DER, 688' left of centerline, 38' AGL/39' MSL. Rod on building 664' from DER, 249' left of centerline, 23' AGL/24' MSL. Pole 1124' from DER, 635' left of centerline, 31' AGL/32' MSL. Multiple poles beginning 1358' from DER, 420' right of centerline, up to 46' AGL/47' MSL. Tree 2057' from DER, 881' left of centerline, 67' AGL/68' MSL. Multiple trees beginning 2604' from DER, 622' right of centerline, up to 85' AGL/86' MSL. Ship 4166' from DER, on centerline, 152' AGL/153' MSL. **Rwy 29**, tree 1265' from DER, 748' left of centerline, 58' AGL/59' MSL. Multiple trees beginning 1541' from DER, 550' right of centerline, up to 65' AGL/66' MSL.

NEW ORLEANS NAS JRB(ALVIN CALLENDER FLD) (KNBG)

NEW ORLEANS, LA

TAKEOFF MINIMUMS AND (OBSTACLE) DEPARTURE PROCEDURES

16091

TAKEOFF MINIMUMS: **Rwy 14**, 300-1¼ with min climb of 250 ft/NM to 500.

DEPARTURE PROCEDURE: **Rwy 4**, Diverse departures authorized 064° CW 224°. Right turn to departure heading only. **Rwy 22**, Diverse departures authorized 045° CW 314°. **Rwy 32**, Diverse departures authorized 141° CW 300° left turn to departure heading only.

TAKEOFF OBSTACLES: **Rwy 4**, Building shelter 305' from DER, 569' right of centerline, 34' AGL/37' MSL. **Rwy 14**, Windsock 407' inward of DER, 307' left of centerline, 0' AGL/9' MSL. Tree NE app Rwy 32 1095' from DER, 1257' left of centerline, 78' AGL/74' MSL. Tank 3438' from DER, 1433' left of centerline, 98' AGL/116' MSL. Terrain 41' from DER, 500' left of centerline, 3' MSL. Terrain 46' from DER, 512' left of centerline, 3' MSL. Cruise Ship 1.0 NM from DER, 57' right of centerline, 213' MSL. **Rwy 32**, Intercoastal waterway shipping channel starting 5859' from DER, vessels up to 160' MSL. Terrain 9' from DER, 500' left of centerline, -1' MSL. Terrain 50' from DER, 500' right of centerline, 3' MSL. Terrain 63' from DER, 517' right of centerline, 3' MSL. Terrain 46' from DER, 512' left of centerline, -1' MSL.

17145

TAKEOFF MINIMUMS, (OBSTACLE) DEPARTURE PROCEDURES, AND DIVERSE VECTOR AREA (RADAR VECTORS)

**TAKEOFF MINIMUMS, (OBSTACLE) DEPARTURE PROCEDURES, AND
DIVERSE VECTOR AREA (RADAR VECTORS)**

17145

NEW ROADS, LA

FALSE RIVER RGNL (HZR)
TAKEOFF MINIMUMS AND (OBSTACLE)
DEPARTURE PROCEDURES
ORIG 08157 (FAA)

NOTE: **Rwy 36**, fence 97' from DER, 248' right of centerline, 5' AGL/44' MSL. Pole 1263' from DER, 215' left of centerline, 45' AGL/84' MSL. Trees beginning 1268' from DER, 127' right of centerline, up to 110' AGL/159' MSL. Trees beginning 2436' from DER, 26' left of centerline, up to 127' AGL/176' MSL. **Rwy 18**, road beginning 86' from DER, 398' right of centerline, up to 15' AGL/49' MSL. Fence 220' from DER, 362' right of centerline, 6' AGL/39' MSL.

OAKDALE, LA

ALLEN PARISH (ACP)
TAKEOFF MINIMUMS AND (OBSTACLE)
DEPARTURE PROCEDURES
ORIG 06327 (FAA)

NOTE: **Rwy 18**, trees 400' from DER, 260' left of centerline, 30' AGL/134' MSL. **Rwy 36**, trees 1300' from DER, on centerline, 50' AGL/159' MSL.

OKOLONA, MS

**OKOLONA MUNI-RICHARD STOVALL
FIELD (5A4)**

TAKEOFF MINIMUMS AND (OBSTACLE)
DEPARTURE PROCEDURES
AMDT 1 14205 (FAA)

NOTE: **Rwy 18**, tree 47' from DER, 456' left of centerline, 69' AGL/390' MSL. Tree 423' from DER, 602' right of centerline, 85' AGL/396' MSL. Transmission line towers and trees, beginning 962' from DER, left and right of centerline, up to 79' AGL/402' MSL. **Rwy 36**, trees beginning 288' from DER, 529' right of centerline, up to 70' AGL/371' MSL. Trees beginning 771' from DER, left and right of centerline, up to 85' AGL/376' MSL. Trees beginning 1585' from DER, 34' right of centerline, up to 81' AGL/402' MSL. Trees beginning 3010' from DER, 1173' right of centerline, up to 106' AGL/427' MSL..

OLIVE BRANCH, MS

OLIVE BRANCH (OLV)
TAKEOFF MINIMUMS AND (OBSTACLE)
DEPARTURE PROCEDURES
AMDT 1 13346 (FAA)

NOTE: **Rwy 18**, ground beginning 164' from DER, 385' right of centerline, 401' MSL. Trees beginning 191' from DER, 395' left of centerline, up to 23' AGL/413' MSL. Trees beginning 1212' from DER, left and right of centerline, up to 100' AGL/480' MSL. Trees beginning 3028' from DER, 123' left of centerline, up to 93' AGL/483' MSL. Trees beginning 4193' from DER, left and right of centerline, up to 100' AGL/519' MSL. **Rwy 36**, trees beginning 1224' from DER, left and right of centerline, up to 100' AGL/509' MSL. Trees beginning 2763' from DER, left and right of centerline, up to 100' AGL/479' MSL.

OPELOUSAS, LA

ST. LANDRY PARISH-AHART FIELD (OPL)
TAKEOFF MINIMUMS AND (OBSTACLE)
DEPARTURE PROCEDURES
AMDT 1 12152 (FAA)

TAKEOFF MINIMUMS: **Rwy 18**, 300-1/4 or std. w/min. climb of 261' per NM to 400.

NOTE: **Rwy 6**, vehicles on road 499' from DER, on centerline, up to 15' AGL/89' MSL. Buildings 94' from DER, 367' left of centerline, 25' AGL/99' MSL. Trees beginning 241' from DER, 274' left of centerline, up to 100' AGL/179' MSL. Trees beginning 909' from DER, 341' right of centerline, up to 100' AGL/174' MSL. Buildings 977' from DER, 710' right of centerline, 25' AGL/104' MSL. Poles beginning 1219' from DER, 626' right of centerline, 50' AGL/124' MSL. **Rwy 18**, trees beginning 132' from DER, 271' right of centerline, up to 100' AGL/155' MSL. Trees beginning 383' from DER, 358' left of centerline, up to 100' AGL/169' MSL. Tower 6046' from DER, 895' left of centerline, 207' AGL/269' MSL. Buildings 1072' from DER, 503' left of centerline, 25' AGL/99' MSL. Pole 2581' from DER, 443' left of centerline, 78' AGL/147' MSL. Vehicles on road 396' from DER, right and left of centerline, 15' AGL/89' MSL. **Rwy 24**, vehicles on road 255' from DER, on centerline, 15' AGL/84' MSL. Trees beginning 151' from DER, 311' left of centerline, up to 100' AGL/169' MSL. Buildings 345' from DER, 551' left of centerline, 25' AGL/94' MSL. Poles beginning 505' from DER, 394' left of centerline, 50' AGL/119' MSL. Trees beginning 254' from DER, 220' right of centerline, 100' AGL/169' MSL. Buildings 385' from DER, 269' right of centerline, 25' AGL/94' MSL. Poles beginning 527' from DER, 299' right of centerline, 50' AGL/119' MSL. **Rwy 36**, trees beginning 823' from DER, right and left of centerline, up to 100' AGL/158' MSL. Pole 1116' from DER, 147' right of centerline, 35' AGL/104' MSL.

OXFORD, MS

UNIVERSITY-OXFORD (UOX)
TAKEOFF MINIMUMS AND (OBSTACLE)
DEPARTURE PROCEDURES
AMDT 2 14317 (FAA)

TAKEOFF MINIMUMS: **Rwy 9**, 300-1/2 or std. w/min. climb of 472' per NM to 800.

DEPARTURE PROCEDURE: **Rwy 9**, climb heading 092° to 900 before proceeding on course.

NOTE: **Rwy 9**, trees beginning 58' from DER, 237' right of centerline, up to 79' AGL/622' MSL. Trees beginning 140' from DER, 404' left of centerline, up to 84' AGL/555' MSL. Trees, tower and obstruction light antenna beginning 3729' from DER, left and right of centerline, up to 147' AGL/672' MSL. **Rwy 27**, tree 39' from DER, 494' right of centerline, up to 74' AGL/434' MSL. Trees beginning 602' from DER, 572' right of centerline, up to 94' AGL/474' MSL.

22 JUN 2017 to 20 JUL 2017

22 JUN 2017 to 20 JUL 2017

17145

**TAKEOFF MINIMUMS, (OBSTACLE) DEPARTURE PROCEDURES, AND
DIVERSE VECTOR AREA (RADAR VECTORS)**

**TAKEOFF MINIMUMS, (OBSTACLE) DEPARTURE PROCEDURES, AND
DIVERSE VECTOR AREA (RADAR VECTORS)**

17145

PASCAGOULA, MS

TRENT LOTT INTL (PQL)

TAKEOFF MINIMUMS AND (OBSTACLE)

DEPARTURE PROCEDURES

AMDT 1 11237 (FAA)

TAKEOFF MINIMUMS: **Rwy 17**, 300-1¼ or std. w/min. climb of 226' per NM to 400, or alternatively, with standard takeoff minimums and a normal 200' per NM climb gradient, takeoff must occur no later than 1600' prior to DER. **Rwy 35**, std. w/min. climb of 217' per NM to 1000 or 900-2½ for climb in visual conditions.

DEPARTURE PROCEDURE: **Rwy 35**, for climb in visual conditions: cross Trent Lott Intl Airport at or above 800' MSL before proceeding on course.

NOTE: **Rwy 17**, trees beginning 1622' from DER, 46' left of centerline, up to 64' AGL/71' MSL. Tree 2298' from DER, 77' right of centerline, 71' AGL/80' MSL. Transmission tower 3912' from DER, 1412' left of centerline, 112' AGL/121' MSL. Sign 5417' from DER, 1141' right of centerline, 159' AGL/170' MSL. **Rwy 35**, tree 2997' from DER, 1162' right of centerline, 79' AGL/93' MSL.

PATTERSON, LA

HARRY P. WILLIAMS MEMORIAL (PTN)

TAKEOFF MINIMUMS AND (OBSTACLE)

DEPARTURE PROCEDURES

AMDT 1A 12292 (FAA)

NOTE: **Rwy 6**, fence 2' from DER, 443' left of centerline, 4' AGL/11' MSL. Fence 197' from DER, 252' right of centerline, 7' AGL/14' MSL. Obstruction light on DME 490' from DER, 255' right of centerline, 21' AGL/28' MSL. Trees and pole beginning 772' from DER, 256' right of centerline, up to 97' AGL/102' MSL. **Rwy 24**, fence 84' from DER, 303' left of centerline, 8' AGL/14' MSL. Trees beginning 1876' from DER, 935' left of centerline, up to 76' AGL/85' MSL.

PHILADELPHIA, MS

PHILADELPHIA MUNI (MPE)

TAKEOFF MINIMUMS AND (OBSTACLE)

DEPARTURE PROCEDURES

AMDT 2 09295 (FAA)

NOTE: **Rwy 18**, trees beginning 35' from DER, 58' left of centerline and 276' right of centerline, up to 100' AGL/585' MSL. **Rwy 36**, trees beginning 184' from DER, 370' right of centerline, up to 75' AGL/494' MSL. Trees beginning 2500' from DER, 51' right of centerline 136' AGL/535' MSL.

PICAYUNE, MS

PICAYUNE MUNI (MJD)

TAKEOFF MINIMUMS AND (OBSTACLE)

DEPARTURE PROCEDURES

ORIG 08269 (FAA)

DEPARTURE PROCEDURE: **Rwy 36**, climb heading 359° to 800 before proceeding on course.

NOTE: **Rwy 18**, trees and bushes beginning 76' from DER, 18' left of centerline, up to 20' AGL/69' MSL. Trees and bushes beginning 211' from DER, 182' right of centerline, up to 28' AGL/77' MSL. **Rwy 36**, pole, trees, and bushes beginning 969' from DER, 183' left of centerline, up to 94' AGL/144' MSL. Pole, bush, and trees beginning 63' from DER, 74' right of centerline, up to 97' AGL/143' MSL.

POLK AAF (KPOE),

FORT POLK, LA

TAKEOFF MINIMUMS AND (OBSTACLE)

DEPARTURE PROCEDURES

ORIG 13178

TAKE-OFF OBSTACLES: **Rwy 16**, Trees beginning 2284' from DER, 1004' left of centerline, up to 364' MSL. Trees beginning 3223' from DER, 1193' right of centerline, up to 365' MSL. **Rwy 34**, Trees beginning 2305' from DER, 470' left of centerline, up to 80' AGL/402' MSL. Trees beginning 2866' from DER, 1193' right of centerline, up to 449' MSL.

POPLARVILLE, MS

POPLARVILLE-PEARL RIVER COUNTY

(M13)

TAKEOFF MINIMUMS AND (OBSTACLE)

DEPARTURE PROCEDURES

ORIG 15344 (FAA)

TAKE-OFF OBSTACLES: **Rwy 34**, 400-1¼ or std. w/min. climb of 405' per NM to 900.

NOTE: **Rwy 16**, trees beginning 504' from DER, 530' left of centerline, up to 100' AGL/399' MSL. Trees beginning 745' from DER, crossing centerline, up to 100' AGL/389' MSL. Trees beginning 1239' from DER, 450' right of centerline, up to 100' AGL/419' MSL. **Rwy 34**, trees beginning 104' from DER, 469' right of centerline, up to 100' AGL/419' MSL. Trees beginning 436' from DER, 467' left of centerline, up to 100' AGL/409' MSL. Trees beginning 2720' from DER, 1166' right of centerline, up to 100' AGL/429' MSL. Tower 1.3 NM from DER, 2414' right of centerline, 335' AGL/665' MSL.

PRENTISS, MS

PRENTISS-JEFFERSON DAVIS COUNTY

(M43)

TAKEOFF MINIMUMS AND (OBSTACLE)

DEPARTURE PROCEDURES

ORIG 08269 (FAA)

NOTE: **Rwy 12**, poles and trees beginning 168' from DER, 256' left of centerline, up to 85' AGL/544' MSL. Trees beginning 231' from DER, 264' right of centerline, up to 72' AGL/511' MSL. **Rwy 30**, vehicle on road and trees beginning 91' from DER, 110' left of centerline, up to 64' AGL/513' MSL. Trees beginning 673' from DER, 360' right of centerline, up to 81' AGL/530' MSL.

RAYMOND, MS

JOHN BELL WILLIAMS (JVW)

TAKEOFF MINIMUMS AND (OBSTACLE)

DEPARTURE PROCEDURES

AMDT 4 11237 (FAA)

DEPARTURE PROCEDURE: **Rwy 12**, climb via heading 124° to 2600 before proceeding on course. **Rwy 30**, climb via heading 304° to 1600 before proceeding on course.

NOTE: **Rwy 12**, trees beginning 1' from DER, 132' right of centerline, up to 100' AGL/379' MSL. Trees beginning 1753' from DER, 788' left of centerline, up to 100' AGL/359' MSL. **Rwy 30**, pole 1522' from DER, 533' right of centerline, 57' AGL/ 287' MSL. Trees beginning 593' from DER, 426' right of centerline, up to 100' AGL/339' MSL. Trees beginning 36' from DER, 163' left of centerline, up to 100' AGL/349' MSL.

17145

**TAKEOFF MINIMUMS, (OBSTACLE) DEPARTURE PROCEDURES, AND
DIVERSE VECTOR AREA (RADAR VECTORS)**

**TAKEOFF MINIMUMS, (OBSTACLE) DEPARTURE PROCEDURES, AND
DIVERSE VECTOR AREA (RADAR VECTORS)**

17145

RAYVILLE, LA

JOHN H HOOKS JR MEMORIAL (M79)

TAKEOFF MINIMUMS AND (OBSTACLE)
DEPARTURE PROCEDURES

ORIG 09071 (FAA)

TAKEOFF MINIMUMS: **Rwys 9, 27**, NA-Environmental.

NOTE: **Rwy 18**, building 104' from DER, 364' right of centerline, 22' AGL/101' MSL. Trees beginning 442' from DER, 230' left of centerline, up to 100' AGL/174' MSL. Trees beginning 1874' from DER, 972' right of centerline, up to 100' AGL/146' MSL. **Rwy 36**, trees beginning 20' from DER, 328' right of centerline, up to 100' AGL/156' MSL. Trees beginning 900' from DER, 300' left of centerline, up to 100' AGL/156' MSL. Trees beginning 1973' from DER, from left to right of centerline, up to 100' AGL/178' MSL.

RESERVE, LA

PORT OF SOUTH LOUISIANA

EXECUTIVE RGNL (APS)

TAKEOFF MINIMUMS AND (OBSTACLE)
DEPARTURE PROCEDURES

AMDT 1A 17005 (FAA)

TAKEOFF MINIMUMS: **Rwy 17**, 300-1¾ or std. w/ min. climb of 240' per NM to 400.DEPARTURE PROCEDURE: **Rwy 17**, climb heading 173° to 1400 before turning right.

NOTE: **Rwy 17**, bush 43' from DER, 362' right of centerline, 3' AGL/8' MSL. Tree 131' from DER, 497' left of centerline, 22' AGL/22' MSL. Poles beginning 1377' from DER, 109' right of centerline, up to 40' AGL/46' MSL. Poles beginning 1482' from DER, 135' right of centerline, up to 42' AGL/46' MSL. Transmission towers beginning 1706' from DER, 184' right of centerline, up to 118' AGL/124' MSL. Transmission towers beginning 2156' from DER, 151' left of centerline, up to 73' AGL/78' MSL. Transmission tower 3209' from DER, 214' right of centerline, 86' AGL/93' MSL. Transmission tower 3293' from DER, 364' left of centerline, 92' AGL/98' MSL. Elevator 1.44 NM from DER, 114' right of centerline, 250' AGL/266' MSL. **Rwy 35**, rising terrain 14' from DER, 432' right of centerline, 7' MSL. Rising terrain 14' from DER, 260' left of centerline, 7' MSL. Trees beginning 424' from DER, 540' left of centerline, up to 74' AGL/78' MSL. Trees beginning 811' from DER, 621' right of centerline, up to 82' AGL/86' MSL. Trees beginning 1091' from DER, 44' left of centerline, up to 87' AGL/91' MSL. Trees beginning 1142' from DER, 100' right of centerline, up to 44' AGL/48' MSL. Trees beginning 1438' from DER, 60' left of centerline, up to 88' AGL/92' MSL. Trees beginning 1526' from DER, 9' right of centerline, up to 92' AGL/96' MSL. Trees beginning 2394' from DER, 40' right of centerline, up to 100' AGL/104' MSL. Trees beginning 2698' from DER, 13' left of centerline, up to 98' AGL/102' MSL.

RIPLEY, MS

RIPLEY (25M)

TAKEOFF MINIMUMS AND (OBSTACLE)
DEPARTURE PROCEDURES

ORIG 07018 (FAA)

TAKEOFF MINIMUMS: **Rwy 3**, 300-1¾ or std. w/ min. climb of 233' per NM to 800, or alternatively, w/ std. takeoff minimums and a normal 200'/NM climb gradient, takeoff must occur no later than 2100' prior to DER. DEPARTURE PROCEDURE: **Rwy 21**, climb heading 213° to 1100 before turning left.

NOTE: **Rwy 3**, multiple trees beginning 774' from DER, 189' left of centerline, up to 100' AGL/569' MSL. Multiple trees beginning 1485' from DER, 331' left of centerline, up to 100' AGL/576' MSL. Multiple trees beginning 1.2 NM from DER, 1852' right of centerline, up to 100' AGL/689' MSL. Multiple trees beginning 1.2 NM from DER, 9' left of centerline, up to 100' AGL/669' MSL. Multiple trees beginning 1.4 NM from DER, 2100' right of centerline, up to 100' AGL/699' MSL. **Rwy 21**, multiple trees beginning 198' from DER, 189' left of centerline, up to 100' AGL/519' MSL. Multiple trees beginning 333' from DER, 307' right of centerline, up to 100' AGL/519' MSL.

RUSTON, LA

RUSTON RGNL (RSN)

TAKEOFF MINIMUMS AND (OBSTACLE)
DEPARTURE PROCEDURES

ORIG 11181 (FAA)

NOTE: **Rwy 18**, rising terrain beginning 197' from DER, 259' right of centerline, up to 325' MSL. Trees beginning 123' from DER, 78' left of centerline, up to 100' AGL/411' MSL. Fences beginning 617' from DER, 234' left of centerline, up to 9' AGL/330' MSL. Vehicles on road beginning 652' from DER, 291' left of centerline, up to 18' AGL/339' MSL. Pole 1183' from DER, 516' right of centerline, 25' AGL/346' MSL. Trees beginning 1193' from DER, 23' right of centerline, up to 100' AGL/429' MSL. **Rwy 36**, rising terrain and trees beginning 69' from DER, 290' right of centerline, up to 100' AGL/349' MSL. Trees beginning 2308' from DER, 195' left of centerline, up to 100' AGL/389' MSL.

22 JUN 2017 to 20 JUL 2017

22 JUN 2017 to 20 JUL 2017

17145

**TAKEOFF MINIMUMS, (OBSTACLE) DEPARTURE PROCEDURES, AND
DIVERSE VECTOR AREA (RADAR VECTORS)**

**TAKEOFF MINIMUMS, (OBSTACLE) DEPARTURE PROCEDURES, AND
DIVERSE VECTOR AREA (RADAR VECTORS)**

17145

SHREVEPORT, LA

**SHREVEPORT DOWNTOWN (DTN)
TAKEOFF MINIMUMS AND (OBSTACLE)
DEPARTURE PROCEDURES**

AMDT 3B 16035 (FAA)

TAKEOFF MINIMUMS: **Rwy 23**, 300-1½ or std. w/min. climb of 215' per NM to 500. **Rwy 32**, std. w/min. climb of 215' per NM to 2700.

DEPARTURE PROCEDURE: **Rwy 23**, climb heading 234° to 800 before turning left.

NOTE: **Rwy 5**, trees 102' from DER, 137' right of centerline, up to 80' AGL/245' MSL. Trees 151' from DER, 247' left of centerline, up to 80' AGL/230' MSL. **Rwy 14**, building 24' from DER, 466' right of centerline, 12' AGL/191' MSL. Barge 1502' from DER, left and right of centerline, 60' AGL/238' MSL. Trees 1626' from DER, 25' right of centerline, up to 100' AGL/281' MSL. Trees 497' from DER, 73' left of centerline, up to 100' AGL/279' MSL. **Rwy 23**, rod on hanger 24' from DER, 304' left of centerline, 30' AGL/204' MSL. Vehicle on road 180' from DER, left and right of centerline, 15' AGL/188' MSL. Trees 734' from DER, 278' left of centerline, up to 80' AGL/229' MSL. Tower 1.2 NM from DER, 1698' right of centerline, 203' AGL/363' MSL. Tower 1.2 NM from DER, 901' right of centerline, 197' AGL/365' MSL. Pole 3891' from DER, 196' right of centerline, 125' AGL/295' MSL. **Rwy 32**, fence 12' from DER, 242' right of centerline, 10' AGL/180' MSL. Vehicles on road 71' from DER, left and right of centerline, up to 15' AGL/185' MSL. Tree 282' from DER, 556' right of centerline, 80' AGL/249' MSL. Trees beginning 373' from DER, 411' left of centerline, up to 90' AGL/262' MSL. Barge 1164' from DER, left and right of centerline, 60' AGL/238' MSL. Trees beginning 2029' from DER, 51' left of centerline, up to 110' AGL/267' MSL.

SHREVEPORT, LA (CON'T)

**SHREVEPORT RGNL (SHV)
TAKEOFF MINIMUMS AND (OBSTACLE)
DEPARTURE PROCEDURES**

AMDT 1 13234 (FAA)

TAKEOFF MINIMUMS: **Rwy 6**, std. w/min. climb of 225' per NM to 900 or 900-2½ for climb in visual conditions.

DEPARTURE PROCEDURE: **Rwy 6**, for climb in visual conditions: cross Shreveport Rgnl Airport at or above 1000 before proceeding on course. When executing VCOA, notify ATC prior to departure.

NOTE: **Rwy 6**, trees beginning 1476' from DER, left and right of centerline, up to 100' AGL/302' MSL. Antenna on oil tank 1.37 NM from DER, 1983' left of centerline, 210' AGL/440' MSL. Towers beginning 2.58 NM from DER, left and right of centerline, up to 434' AGL/669' MSL.

Rwy 14, terrain 40' from DER, 295' right of centerline, 227' MSL. Vehicles on road beginning 105' from DER, left and right of centerline, up to 15' AGL/244' MSL. Navaid 774' from DER, 451' left of centerline, 18' AGL/242' MSL. Poles beginning 864' from DER, left and right of centerline, up to 24' AGL/254' MSL. Trees beginning 986' from DER, left and right of centerline, up to 59' AGL/289' MSL. Light pole 993' from DER, 765' right of centerline, 21' AGL/254' MSL. Train on tracks beginning 1064' from DER, left and right of centerline, up to 23' AGL/254' MSL. Trees beginning 2894' from DER, left and right of centerline, up to 100' AGL/368' MSL. **Rwy 24**, terrain 109' from DER, 471' right of centerline, 240' MSL. Vehicles on road beginning 375' from DER, left and right of centerline, up to 15' AGL/264' MSL. Trees beginning 2050' from DER, left and right of centerline, up to 100' AGL/362' MSL. **Rwy 32**, terrain 30' from DER, 345' left of centerline, 259' MSL. Vehicles on road beginning 744' from DER, left and right of centerline, up to 15' AGL/294' MSL. Trees beginning 1035' from DER, left and right of centerline, up to 100' AGL/342' MSL. sign, 1945' from DER, 776' left of centerline, 50' AGL/310' MSL.

SLIDELL, LA

SLIDELL (ASD)

**TAKEOFF MINIMUMS AND (OBSTACLE)
DEPARTURE PROCEDURES**

ORIG 11181 (FAA)

NOTE: **Rwy 18**, trees beginning 126' from DER, 103' left and right of centerline, up to 100' AGL/129' MSL. Bush 38' from DER, 422' left of centerline, 1' AGL/29' MSL.

Rwy 36, tree 89' from DER, 460' right of centerline, 22' AGL/47' MSL.

SPRINGHILL, LA

SPRINGHILL (SPH)

**TAKEOFF MINIMUMS AND (OBSTACLE)
DEPARTURE PROCEDURES**

ORIG-A 14317 (FAA)

TAKEOFF MINIMUMS: **Rwy 36**, NA-Airport request.

NOTE: **Rwy 18**, trees beginning 184' from DER, 78' right of centerline, up to 117' AGL/333' MSL. Trees beginning 272' from DER, 372' left of centerline, up to 100' AGL/313' MSL.

22 JUN 2017 to 20 JUL 2017

22 JUN 2017 to 20 JUL 2017

17145

**TAKEOFF MINIMUMS, (OBSTACLE) DEPARTURE PROCEDURES, AND
DIVERSE VECTOR AREA (RADAR VECTORS)**

**TAKEOFF MINIMUMS, (OBSTACLE) DEPARTURE PROCEDURES, AND
DIVERSE VECTOR AREA (RADAR VECTORS)**

17145

STARKVILLE, MS

GEORGE M. BRYAN (STF)
TAKEOFF MINIMUMS AND (OBSTACLE)
DEPARTURE PROCEDURES
ORIG 07186 (FAA)

NOTE: **Rwy 18**, multiple trees beginning 52' from DER, 395' right of centerline up to 79' AGL/378' MSL. Trees 1037' from DER, 463' left of centerline, 45' AGL/365' MSL. Tower 5406' from DER, 402' left of centerline, 165' AGL/464' MSL. **Rwy 36**, windsock and trees beginning 24' from DER, 340' right of centerline up to 110' AGL/429' MSL. Trees 170' from DER, 323' left of centerline, 67' AGL/376' MSL.

OKITIBBEHA (M51)

TAKEOFF MINIMUMS AND (OBSTACLE)
DEPARTURE PROCEDURES
ORIG-A 14093 (FAA)

NOTE: **Rwy 14**, trees 117' from DER, 199' right of centerline, up to 100' AGL/359' MSL. Trees 207' from DER, 103' left of centerline, up to 100' AGL/359' MSL. Vehicle on road 28' from DER, on centerline, 15' AGL/265' MSL. **Rwy 19**, trees beginning 76' from DER, left and right of centerline, up to 100' AGL/379' MSL. **Rwy 32**, trees beginning 123' from DER, 372' left of centerline, up to 100' AGL/369' MSL. Trees beginning 378' from DER, right and left of centerline, up to 100' AGL/369' MSL. **Rwy 1**, trees beginning 242' from DER, 466' right of centerline, up to 100' AGL/359' MSL. Trees beginning 1190' from DER, left and right of centerline, up to 100' AGL/349' MSL.

SULPHUR, LA

SOUTHLAND FIELD (UXL)
TAKEOFF MINIMUMS AND (OBSTACLE)
DEPARTURE PROCEDURES
ORIG 09071 (FAA)

NOTE: **Rwy 15**, numerous trees and poles beginning 200' from DER, left and right of centerline, up to 63' AGL/72' MSL. Tree 862' from DER, 494' right of centerline, 100' AGL/114' MSL. **Rwy 33**, numerous trees and poles beginning 64' from DER, left and right of centerline, up to 38' AGL/47' MSL. Tree 1849' from DER, 647' left of centerline, 100' AGL/114' MSL.

TALLULAH/VICKSBURG, MS, LA

VICKSBURG TALLULAH RGNL (TVR)
TAKEOFF MINIMUMS AND (OBSTACLE)
DEPARTURE PROCEDURES
AMDT 1 13290 (FAA)

NOTE: **Rwy 18**, fence 200' from DER, 349' right of centerline, 6' AGL/91' MSL. Pole 1410' from DER, 512' right of centerline, 35' AGL/121' MSL. Trees beginning 1514' from DER, 881' left of centerline, up to 114' AGL/203' MSL. Trees 3258' from DER, 129' right of centerline, 94' AGL/179' MSL. **Rwy 36**, trees beginning 2382' from DER, 73' left of centerline, up to 89' AGL/177' MSL.

THIBODAUX, LA

THIBODAUX MUNI (L83)
TAKEOFF MINIMUMS AND (OBSTACLE)
DEPARTURE PROCEDURES
ORIG 13066 (FAA)

NOTE: **Rwy 8**, terrain 1' from DER, 335' left of centerline, 10' MSL. Vehicle on road 7' from DER, 187' left of centerline, up to 15' AGL/24' MSL. Vehicle on road 11' from DER, 200' right of centerline, up to 15' AGL/24' MSL. Trees 144' from DER, 412 right of centerline, up to 100' AGL/109' MSL. Trees beginning 685' from DER, 62' right of centerline, up to 100' AGL/109' MSL. Tower 4157' from DER, 1355' right of centerline, 122' AGL/139' MSL. **Rwy 26**, trees beginning at DER, 135' left of centerline, up to 100' AGL/104' MSL. Trees beginning at DER, 146' right of centerline, up to 100' AGL/104' MSL. Trees and power lines beginning 2445' from DER, left and right of centerline, up to 100' AGL/104' MSL.

TUNICA, MS

TUNICA MUNI (UTA)
TAKEOFF MINIMUMS AND (OBSTACLE)
DEPARTURE PROCEDURES
AMDT 2 10322 (FAA)

NOTE: **Rwy 35**, tree 1211' from DER, 803' right of centerline, 70' AGL/258' MSL.

TUPELO, MS

TUPELO RGNL (TUP)
TAKEOFF MINIMUMS AND (OBSTACLE)
DEPARTURE PROCEDURES
AMDT 1 15064 (FAA)

NOTE: **Rwy 18**, runway lights 5' from DER, 4' left and right of centerline, 1' AGL/347' MSL. Trees beginning 1202' from DER, 804' left of centerline up to 100' AGL/400' MSL.

VICKSBURG, MS

VICKSBURG MUNI (VKS)
TAKEOFF MINIMUMS AND (OBSTACLE)
DEPARTURE PROCEDURES
AMDT 2 07186 (FAA)

TAKEOFF MINIMUMS: **Rwy 1**, 600-2 $\frac{3}{4}$ or std. w/ min. climb of 354' per NM to 900. **Rwy 19**, 300-2 or std. w/ a min. climb of 224' per NM to 500, or alternatively, w/ std. takeoff minimums and a normal 200'/NM climb gradient, takeoff must occur no later than 2000' prior to DER.

NOTE: **Rwy 1**, trees beginning 1032' from DER, 316' left of centerline, up to 100' AGL/199' MSL. Stack 2.21 NM from DER, 2838' left of centerline, 594' AGL/699' MSL. Trees beginning 6387' from DER, 2174' right of centerline, up to 100' AGL/319' MSL. **Rwy 19**, tower 1.6 NM from DER, 2749' right of centerline, 108' AGL/366' MSL.

17145

**TAKEOFF MINIMUMS, (OBSTACLE) DEPARTURE PROCEDURES, AND
DIVERSE VECTOR AREA (RADAR VECTORS)**

**TAKEOFF MINIMUMS, (OBSTACLE) DEPARTURE PROCEDURES, AND
DIVERSE VECTOR AREA (RADAR VECTORS)**

17145

VIDALIA, LA**CONCORDIA PARISH (0R4)****TAKEOFF MINIMUMS AND (OBSTACLE)
DEPARTURE PROCEDURES**

ORIG 15344 (FAA)

DEPARTURE PROCEDURE: **Rwy 14**, climb heading 144° to 1100 before turning left.

NOTE: **Rwy 14**, trees beginning 37' from DER, 244' right of centerline, up to 41' AGL/92' MSL. Trees, buildings, and T-L tower beginning 58' from DER, 275' left of centerline, up to 83' AGL/134' MSL. Trees beginning 1115' from DER, 236' left of centerline, up to 58' AGL/112' MSL. T-L tower 3484' from DER, 522' right of centerline, 87' AGL/145' MSL. **Rwy 32**, pole 6' from DER, 420' left of centerline, 29' AGL/81' MSL. Trees beginning 803' from DER, 299' left of centerline, up to 31' AGL/82' MSL. Trees beginning 844' from DER, 432' right of centerline, up to 79' AGL/130' MSL. Trees and T-L tower beginning 2181' from DER, crossing centerline, up to 99' AGL/157' MSL.

VIVIAN, LA**VIVIAN (3F4)****TAKEOFF MINIMUMS AND (OBSTACLE)
DEPARTURE PROCEDURES**

AMDT 2 09099 (FAA)

TAKEOFF MINIMUMS: **Rwy 9**, 200-1¼ or std. w/ min. climb of 303' per NM to 600. **Rwy 27**, 300-2 or std. w/ min. climb of 203' per NM to 600, or alternatively, with standard takeoff minimums and a normal 200' per NM climb gradient, takeoff must occur no later than 1200' prior to DER.

DEPARTURE PROCEDURE: **Rwy 9**, climb heading 088° to 1900 before turning left. **Rwy 27**, climb heading 268° to 1900 before turning right.

NOTE: **Rwy 9**, tower 2476' from DER, 803' left of centerline, 100' AGL/360' MSL. Tank 1 NM from DER, 375' left of centerline, 162' AGL/432' MSL. Vehicle and road, crossing southwest to northeast beginning 1271' from DER, 645' right of centerline, 15' AGL/294' MSL. **Rwy 27**, vehicle and road 204' from DER, 495' right of centerline, 15' AGL/274' MSL.

WEST POINT, MS**MCCHAREN FIELD (M83)****TAKEOFF MINIMUMS AND (OBSTACLE)
DEPARTURE PROCEDURES**

AMDT 1A 14065 (FAA)

TAKEOFF MINIMUMS: **Rwy 36**, 400-1¼ or std. w/min. climb of 370' per NM to 800.

NOTE: **Rwy 18**, numerous trees beginning 1' from DER, 250' left of centerline, up to 100' AGL/309' MSL. Terrain beginning 146' from DER, 22' left of centerline, up to 207' MSL. Fence 200' from DER, on centerline, up to 4' AGL/213' MSL. Terrain 151' from DER, 232' right of centerline, 207' MSL. Numerous trees beginning 913' from DER, 744' right of centerline, up to 100' AGL/279' MSL. Vehicle on road 268' from DER, on centerline, 10' AGL/219' MSL. **Rwy 36**, train on railroad track beginning 50' from DER, on centerline, 23' AGL/232' MSL. Terrain 243' from DER, 262' left of centerline, 214' MSL. Numerous trees beginning 1287' from DER, 299' left of centerline, up to 100' AGL/349' MSL. Tree 2016' from DER, 138' right of centerline, 100' AGL/319' MSL. Tower 1.5 NM from DER, 1399' right of centerline, 353' AGL/597' MSL.

WINNFIELD, LA**DAVID G. JOYCE (0R5)****TAKEOFF MINIMUMS AND (OBSTACLE)
DEPARTURE PROCEDURES**

ORIG 09351 (FAA)

NOTE: **Rwy 9**, trees beginning 202' from DER, 330' right of centerline, 100' AGL/219' MSL, trees beginning 187' from DER, 256' left of centerline, 100' AGL/219' MSL. **Rwy 27**, trees beginning 192' from DER, 426' right of centerline, 100' AGL/259' MSL, trees beginning 3440' from DER, 1392' left of centerline, 100' AGL/289' MSL.

WINONA, MS**WINONA-MONTGOMERY COUNTY (5A6)****TAKEOFF MINIMUMS AND (OBSTACLE)
DEPARTURE PROCEDURES**

ORIG 08045 (FAA)

TAKEOFF MINIMUMS: **Rwy 21**, 400-2¾ or std. w/ min. climb of 215' per NM to 900. Alternatively, with standard takeoff minimums and a normal 200'/NM climb gradient, takeoff must occur no later than 1900' prior to DER.

DEPARTURE PROCEDURE: **Rwy 3**, Climb heading 030° to 1000 before turning west.

NOTE: **Rwy 21**, Tower 2.1 NM from DER, 2789' right of centerline, 350' AGL/703' MSL.

YAZOO CITY, MS**YAZOO COUNTY (871)****TAKEOFF MINIMUMS AND (OBSTACLE)
DEPARTURE PROCEDURES**

ORIG 11349 (FAA)

NOTE: **Rwy 17**, trees beginning 684' from DER, 131' left of centerline, up to 100' AGL/202' MSL. Trees beginning 1016' from DER, 103' right of centerline, up to 100' AGL/200' MSL. **Rwy 35**, trees beginning 2616' from DER, 837' left of centerline, up to 100' AGL/200' MSL. Trees beginning 303' from DER, 1228' right of centerline, up to 100' AGL/200' MSL.

22 JUN 2017 to 20 JUL 2017

22 JUN 2017 to 20 JUL 2017

17145

**TAKEOFF MINIMUMS, (OBSTACLE) DEPARTURE PROCEDURES, AND
DIVERSE VECTOR AREA (RADAR VECTORS)**