

WAAS CH 50423 W34A	APP CRS 340°	Rwy Ldg TDZE Apt Elev	6201 5265 5278
--	------------------------	-----------------------------	---

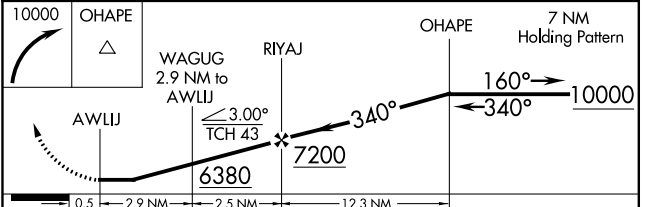
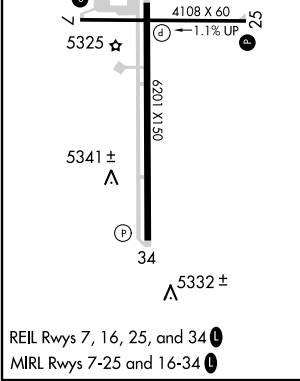
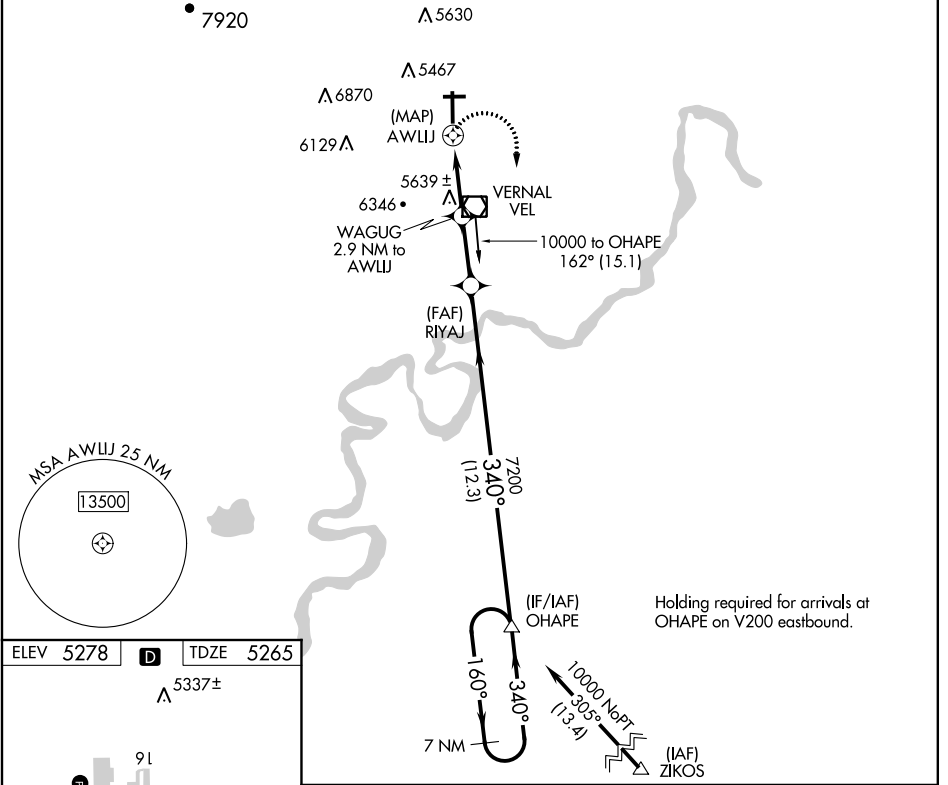
RNAV (GPS) RWY 34

VERNAL RGNL (VEL)

NA DME/DME RNP-0.3 NA. Night landing: Rwy 7 NA. Helicopter visibility reduction below ¼ SM NA. *Missed approach requires a minimum climb of 420 feet per NM to 6800.

MISSED APPROACH: Climbing right turn to 10000 direct OHAPE and hold.

ASOS 135.175	CEDAR CITY RADIO 122.35	UNICOM 122.7 (CTAF)
------------------------	-----------------------------------	-------------------------------



CATEGORY	A	B	C	D
LP MDA	5980-1	715 (800-1)	5980-2	715 (800-2)
*LNAV MDA	5980-1	715 (800-1)	5980-2	715 (800-2)
LNAV MDA	6300-1¼ 1035 (1100-1¼)	6300-1½ 1035 (1100-1½)	6300-3	1035 (1100-3)
CIRCLING	6300-1¼ 1022 (1100-1¼)	6300-1½ 1022 (1100-1½)	6300-3	1022 (1100-3)

27 APR 2017 to 25 MAY 2017

27 APR 2017 to 25 MAY 2017

VOR/DME VEL 108.2 Chan 19	APP CRS 331°	Rwy Idg TDZE Apt Elev 6201 5265 5279
--	------------------------	--

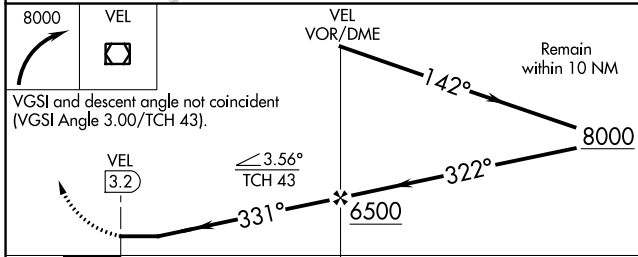
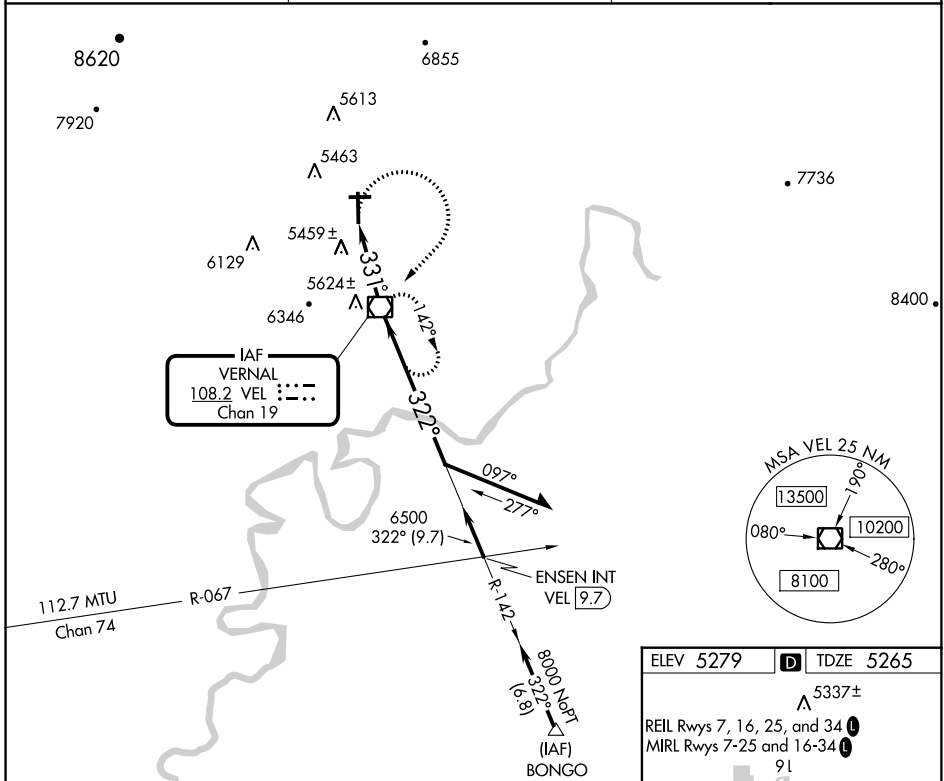
VOR RWY 34

VERNAL RGNL (VEL)

Night landing: Rwy 7 NA. Helicopter visibility reduction below 3/4 SM NA.

MISSED APPROACH: Climbing right turn to 8000 direct VEL VOR/DME and hold.

ASOS 135.175	CEDAR CITY RADIO 122.35	UNICOM 122.7 (CTAF) 0
------------------------	-----------------------------------	--



ELEV 5279	TDZE 5265
5337±	REIL Rwy 7, 16, 25, and 34
5325	MIRL Rwy 7-25 and 16-34
5341±	9L
5332±	34
331° 3.2 NM from FAF	34
FAF to MAP 3.2 NM	
Knots	60 90 120 150 180
Min:Sec	3:12 2:08 1:36 1:17 1:04

CATEGORY	A	B	C	D
S-34	5780-1 515 (600-1)		5780-1½ 515 (600-1½)	5780-1¾ 515 (600-1¾)
CIRCLING	5780-1 501 (600-1)		5900-1¾ 621 (700-1¾)	5940-2 661 (700-2)