

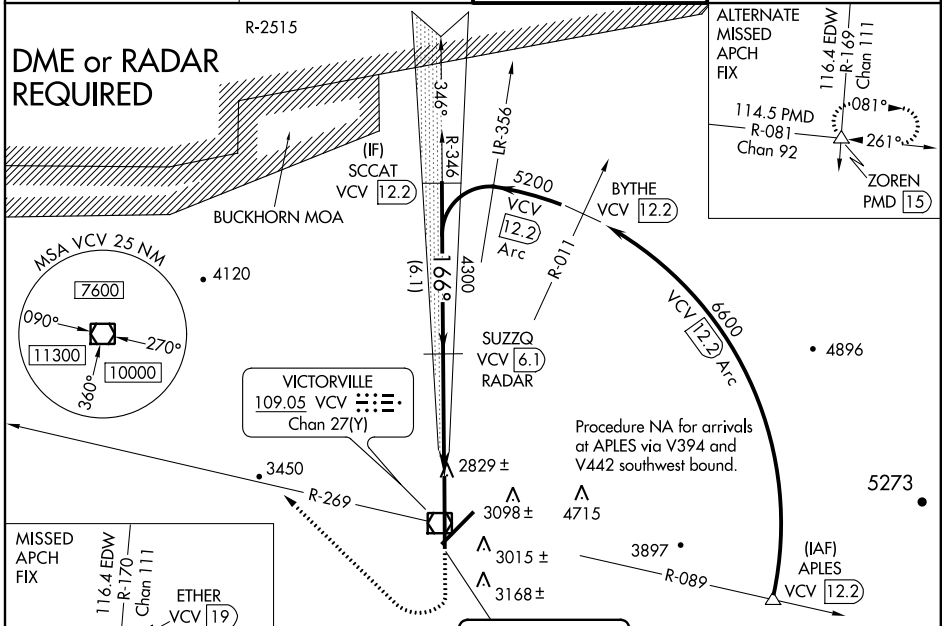
LOC I-VCV 108.75	APP CRS 166°	Rwy Idg TDZE Apt Elev	15050 2825 2885
----------------------------	------------------------	-----------------------------	--

ILS or LOC RWY 17
SOUTHERN CALIFORNIA LOGISTICS (VCV)

⚠ When local altimeter setting not received, use Edwards AFB altimeter setting and increase all DA and MDA 160 feet. Increase all visibilities 1/2 mile.
⚠ DME from VCV VOR/DME. Simultaneous reception of I-VCV and VCV DME required.

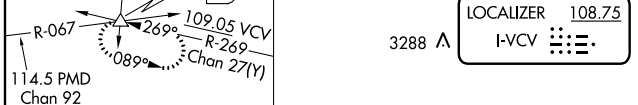
MISSED APPROACH: Climb to 3500, then climbing right turn to 6000 via heading 300° and VCV VOR/DME R-269 to ETHER INT and hold.

ATIS * 135.475	JOSHUA APP CON 124.55 363.0	VICTORVILLE TOWER * 118.35 282.225	GND CON 124.45
--------------------------	---------------------------------------	--	--------------------------

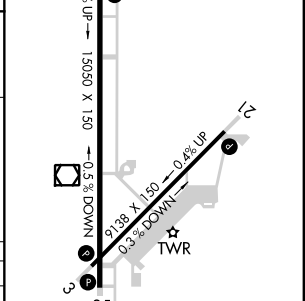
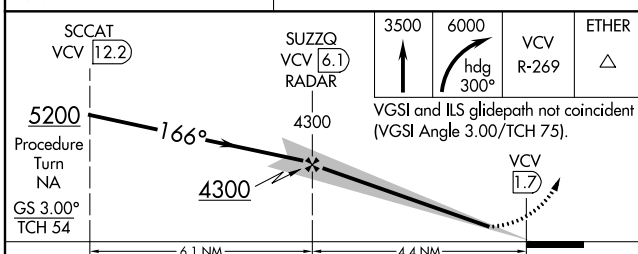


SW-3, 08 JAN 2015 to 05 FEB 2015

SW-3, 08 JAN 2015 to 05 FEB 2015



ELEV	2885	TDZE	2825
		166° 4.4 NM from FAF	



CATEGORY	A	B	C	D
S-ILS 17	3025/40 200 (200-34)			
S-LOC 17	3080/50 255 (200-1)			
CIRCLING	3360-1 475 (500-1)	3420-1 535 (600-1)	3420-1½ 535 (600-1½)	3580-2¼ 695 (700-2¼)

FAF to MAP 4.4 NM					
Knots	60	90	120	150	180
Min:Sec	4:24	2:56	2:12	1:46	1:28

WAAS CH 77523 W17A	APP CRS 166°	Rwy Idg TDZE Apt Elev	15050 2825 2885
--	------------------------	-----------------------------	--

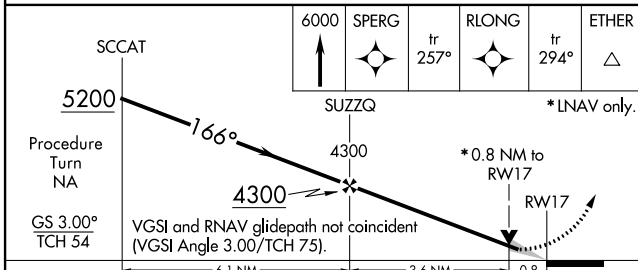
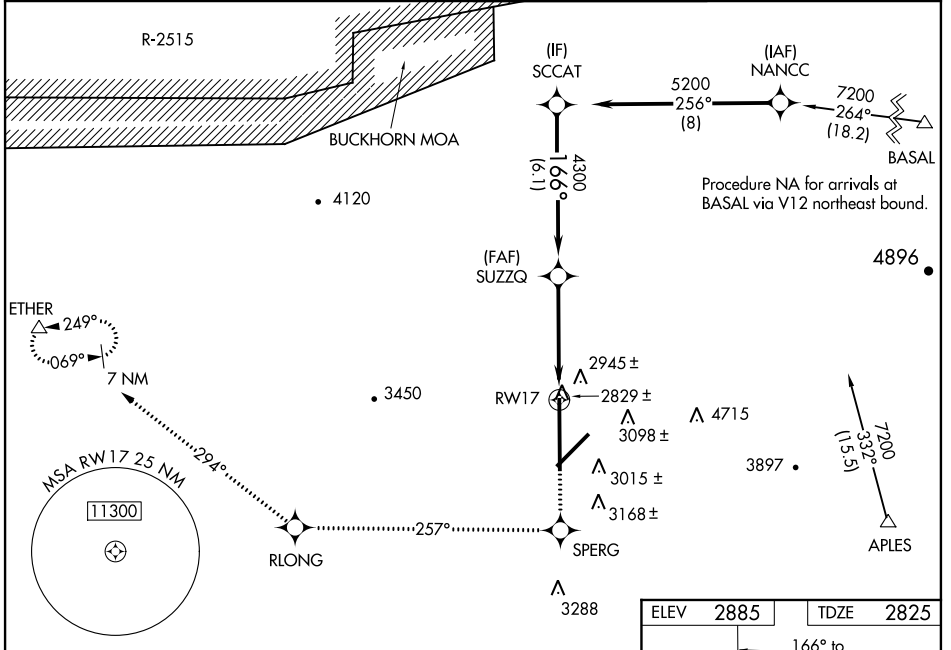
RNAV (GPS) RWY 17

SOUTHERN CALIFORNIA LOGISTICS (V'CV)

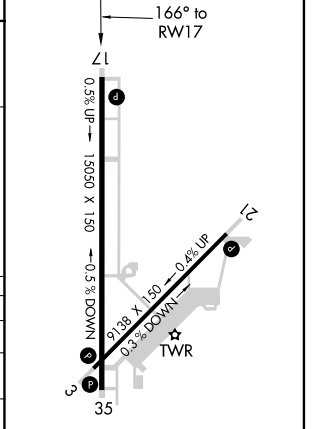
⚠ For uncompensated Baro-VNAV systems, LNAV/VNAV NA below -20°C (-4°F) or above 43°C (109°F).
 DME/DME RNP-0.3 NA.
 When local altimeter setting not received, use Edwards AFB altimeter setting and increase all DA and MDA 160 feet. Increase all visibilities ¾ mile.
 VDP and Baro-VNAV NA when using Edwards AFB altimeter setting.

MISSED APPROACH: Climb to 6000 direct SPERG and via 257° track to RLONG and via 294° track to ETHER and hold.

ATIS ★ 135.475	JOSHUA APP CON 124.55 363.0	VICTORVILLE TOWER ★ 118.35 0 282.225	GND CON 124.45
--------------------------	---------------------------------------	--	--------------------------



ELEV	2885	TDZE	2825
------	------	------	------



CATEGORY	A	B	C	D
LPV DA		3075/40	250 (200-¾)	
LNAV/VNAV DA		3240-1½	415 (400-1½)	
LNAV MDA		3140/50	315 (300-1)	
CIRCLING	3360-1 475 (500-1)	3420-1 535 (600-1)	3420-1½ 535 (600-1½)	3580-2¼ 695 (700-2¼)

REIL Rwy 17 and 35
 HIRL Rwy 3-21 and 17-35

SW-3, 08 JAN 2015 to 05 FEB 2015

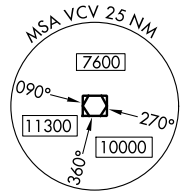
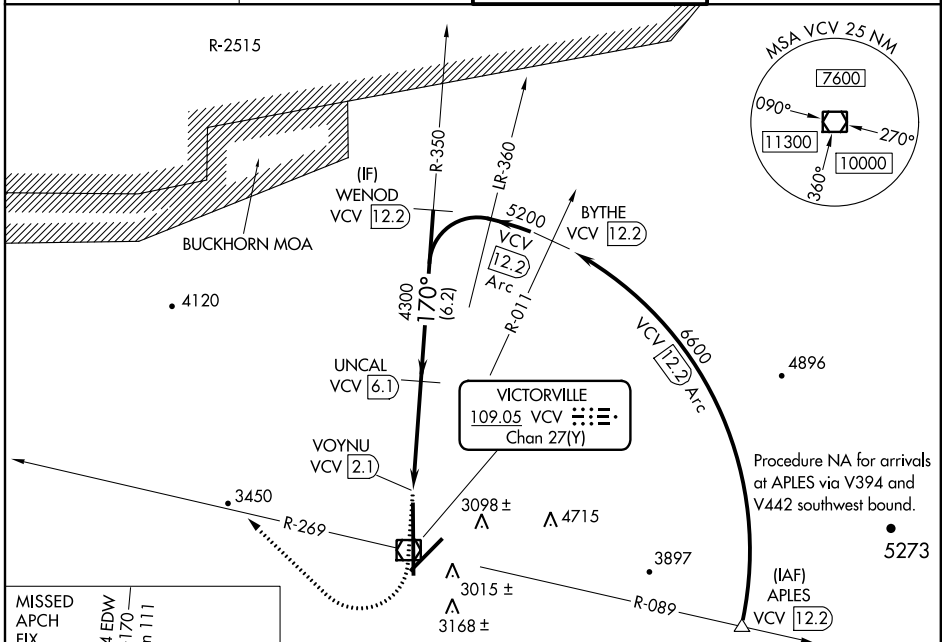
SW-3, 08 JAN 2015 to 05 FEB 2015

VOR/DME VCV 109.05 Chan 27(Y)	APP CRS 170°	Rwy Idg TDZE Apt Elev	15050 2825 2885
--	------------------------	-----------------------------	--

VOR/DME RWY 17

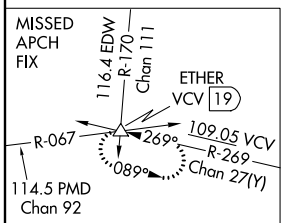
SOUTHERN CALIFORNIA LOGISTICS (VCV)

<p>▽ When local altimeter setting not received, use Edwards AFB altimeter setting and increase all MDA 160 feet. Increase all visibilities ½ mile.</p>	<p>MISSED APPROACH: Climb to 3500, then climbing right turn to 6000 via heading 300° and VCV R-269 to ETHER INT and hold.</p>		
<p>ATIS ★ 135.475</p>	<p>JOSHUA APP CON 124.55 363.0</p>	<p>VICTORVILLE TOWER ★ 118.35 0 282.225</p>	<p>GND CON 124.45</p>

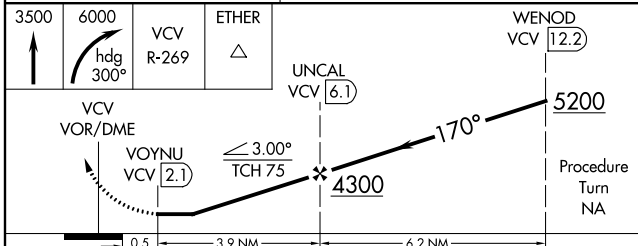
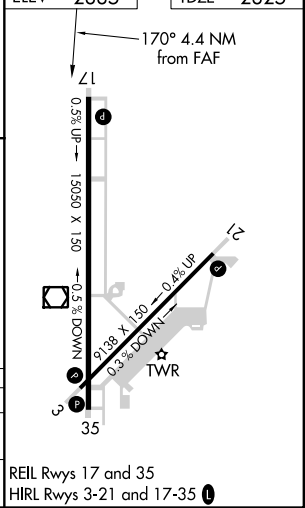


SW-3, 08 JAN 2015 to 05 FEB 2015

SW-3, 08 JAN 2015 to 05 FEB 2015



ELEV	2885	TDZE	2825
------	------	------	------



CATEGORY	A	B	C	D
S-17	3200/50	375 (400-1)		3200/60 375 (400-1¼)
CIRCLING	3360-1 475 (500-1)	3420-1 535 (600-1)	3420-1½ 535 (600-½)	3580-2¼ 695 (700-2¼)

REIL Rwy 17 and 35
HIRL Rwy 3-21 and 17-35