

NDB UWL <b>385</b>	APP CRS <b>082°</b>	Rwy Idg <b>3908</b>
		TDZE <b>1086</b>
		Apt Elev <b>1088</b>

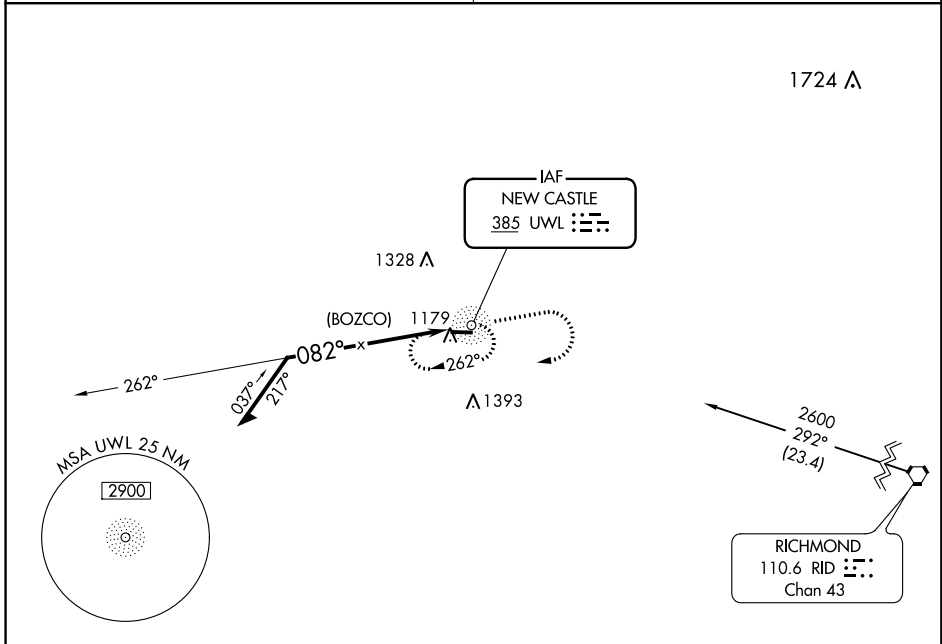
# NDB or GPS RWY 9

NEW CASTLE-HENRY COUNTY MUNI (UWL)

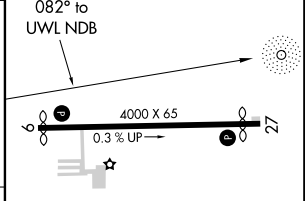
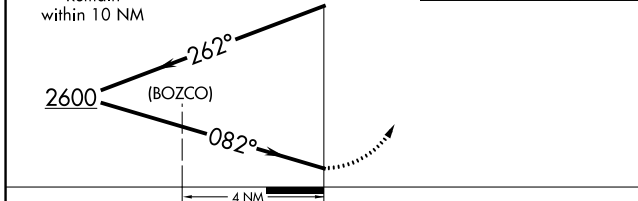
**⚠ NA** Obtain local altimeter setting on CTAF; when not received, use Indianapolis altimeter setting. Straight-in Rwy 9 NA at night, Circling Rwy 9 NA at night. Rwy 9 helicopter visibility reduction below 1 SM NA.

**MISSED APPROACH:** Climb to 2600 then right turn direct UWL NDB and hold.

INDIANAPOLIS APP CON <b>135.45 317.8</b>	UNICOM <b>123.05 (CTAF) 0</b>
---	----------------------------------



2600	UWL	ELEV 1088	TDZE 1086
------	-----	-----------	-----------



CATEGORY	A	B	C	D
S-9	1620-1	534 (600-1)	1620-1½ 534 (600-1½)	1620-1¾ 534 (600-1¾)
CIRCLING	1620-1	532 (600-1)	1620-1½ 532 (600-1½)	1640-2 552 (600-2)
INDIANAPOLIS ALTIMETER SETTING MINIMUMS				
S-9	1760-1	674 (700-1)	1760-2 674 (700-2)	1760-2¼ 674 (700-2¼)
CIRCLING	1760-1	672 (700-1)	1760-2 672 (700-2)	1760-2¼ 672 (700-2¼)

MIRL Rwy 9-27 0

REIL Rwys 9 and 27 0

EC-2, 07 DEC 2017 to 04 JAN 2018

EC-2, 07 DEC 2017 to 04 JAN 2018

WAAS CH <b>90136</b> <b>W27A</b>	APP CRS <b>273°</b>	Rwy Idg TDZE Apt Elev	<b>3680</b> <b>1087</b> <b>1088</b>
--	------------------------	-----------------------------	---

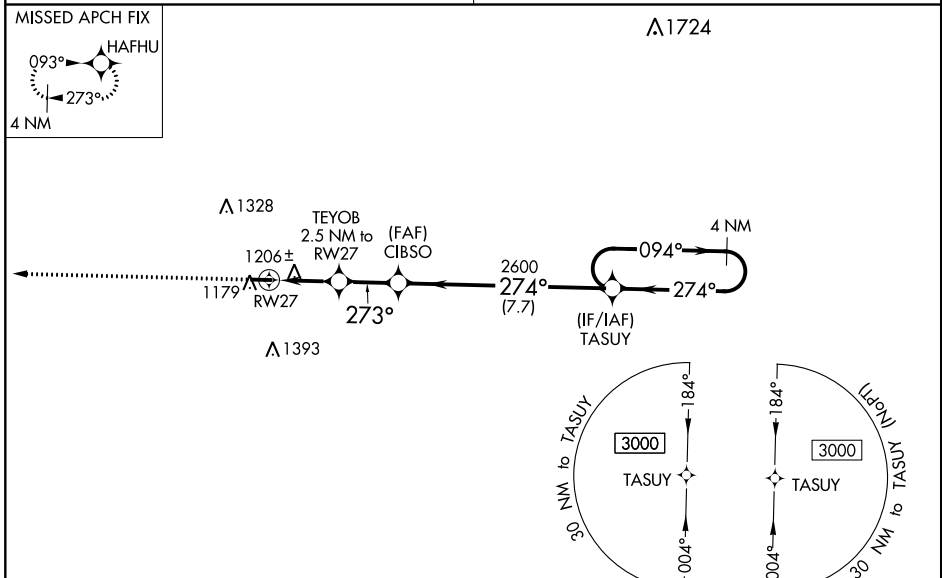
# RNAV (GPS) RWY 27

NEW CASTLE-HENRY COUNTY MUNI (UWL)

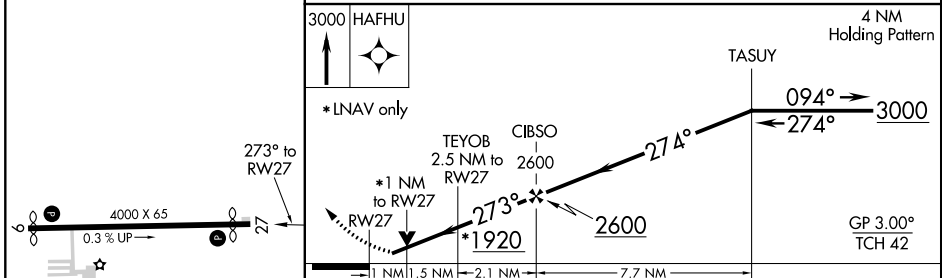
**Baro-VNAV NA** when using Indianapolis Intl altimeter setting. For uncompensated Baro-VNAV systems, LNAV/VNAV NA below -17°C (2°F) or above 54°C (130°F). Obtain local altimeter setting on CTAF; when not received, use Indianapolis Intl altimeter setting and increase all DA 147 feet and all MDA 160 feet; increase LPV all Cats, LNAV/VNAV all Cats and LNAV Cat C/D and Circling Cat C/D visibilities ½ mile. DME/ DME RNP-0.3 NA. VDP NA with Indianapolis Intl altimeter setting. Rwy 27 helicopter visibility reduction below ¾ SM NA. Rwy 9 helicopter visibility reduction below 1 SM NA. Circling Rwy 9 NA at night.

**MISSED APPROACH:** Climb to 3000 direct HAFHU and hold.

INDIANAPOLIS APP CON <b>135.45 317.8</b>	UNICOM <b>123.05 (CTAF) 0</b>
---	----------------------------------



ELEV 1088	TDZE 1087
-----------	-----------



CATEGORY	A	B	C	D
LPV DA		1378-1	291 (300-1)	
LNAV/VNAV DA		1484-1 <sup>3</sup> / <sub>8</sub>	397 (400-1 <sup>3</sup> / <sub>8</sub> )	
LNAV MDA		1460-1	373 (400-1)	
<input checked="" type="checkbox"/> CIRCLING	1540-1 452 (500-1)	1540-1 452 (500-1)	1760-2 672 (700-2)	1760-2 <sup>1</sup> / <sub>4</sub> 672 (700-2 <sup>1</sup> / <sub>4</sub> )

EC-2: 07 DEC 2017 to 04 JAN 2018

EC-2: 07 DEC 2017 to 04 JAN 2018

WAAS CH <b>50136</b> <b>W09A</b>	APP CRS <b>093°</b>	Rwy Idg TDZE <b>1086</b> Apt Elev <b>1088</b>	<b>3908</b> <b>1086</b> <b>1088</b>
--	------------------------	---	---

# RNAV (GPS) RWY 9

NEW CASTLE-HENRY COUNTY MUNI (UWL)

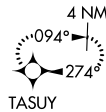
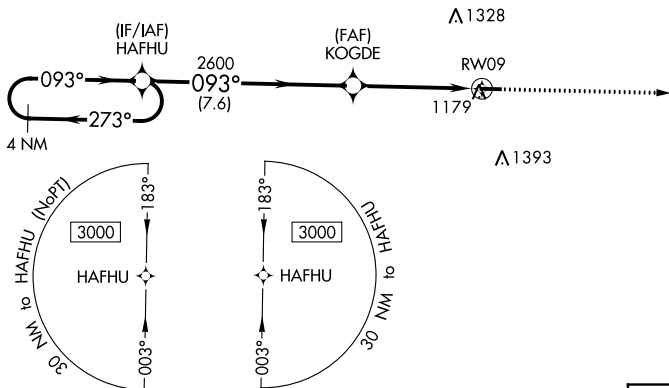
**⚠** Baro-VNAV NA when using Indianapolis Intl altimeter setting. For uncompensated Baro-VNAV systems, LNAV/VNAV NA below -17°C (2°F) or above 54°C (130°F).  
**⚠** NA Obtain local altimeter setting on CTAF; when not received, use Indianapolis Intl altimeter setting and increase all DA 147 feet and all MDA 160 feet; and increase LPV all Cats visibility ¼ mile, LNAV/VNAV all Cats and Circling Cat C/D visibility ½ mile, and LNAV Cat C/D visibility ¾ mile. Night landing: Rwy 9 NA. DME/DME RNP-0.3 NA. Helicopter visibility reduction below 1 SM NA.

**MISSED APPROACH:**  
Climb to 3000 direct TASUY and hold.

INDIANAPOLIS APP CON  
**135.45 317.8**

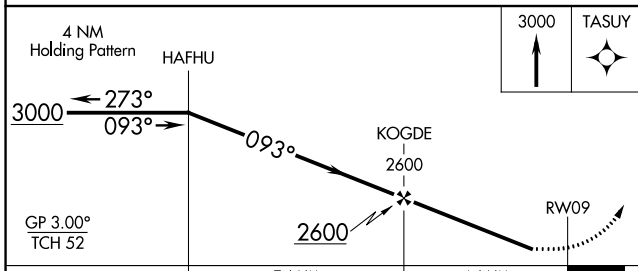
UNICOM  
**123.05 (CTAF)** **📻**

1724 **⚠**

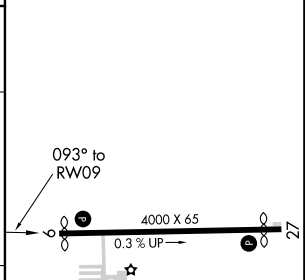


EC-2: 07 DEC 2017 to 04 JAN 2018

EC-2: 07 DEC 2017 to 04 JAN 2018



ELEV 1088	TDZE 1086
-----------	-----------



CATEGORY	A	B	C	D
LPV DA		1336-1	250 (300-1)	
LNAV/VNAV DA		1402-1	316 (400-1)	
LNAV MDA	1540-1	454 (500-1)	1540-1 3/8	454 (500-1 3/8)
<b>C</b> CIRCLING	1540-1	452 (500-1)	1760-2 672 (700-2)	1760-2 1/4 672 (700-2 1/4)

MIREIL Rwy 9-27 **📻**  
REIL Rwy 9 and 27 **📻**

VORTAC RID <b>110.6</b> Chan <b>43</b>	APP CRS <b>291°</b>	Rwy Idg TDZE <b>1087</b> Apt Elev <b>1088</b>	<b>3680</b>
--	------------------------	---	-------------

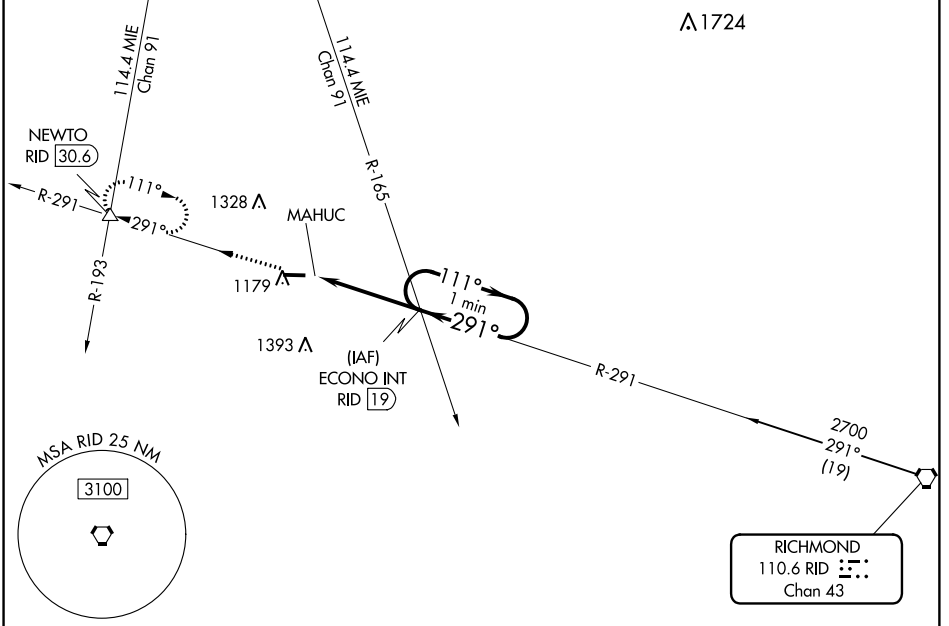
# VOR RWY 27

NEW CASTLE-HENRY COUNTY MUNI (UWL)

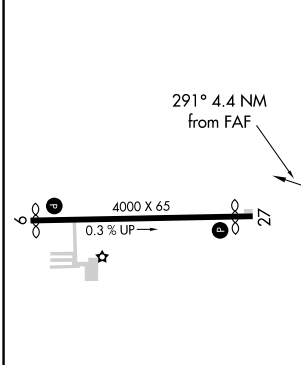
**NA** Obtain local altimeter setting on CTAF, when not received, use Indianapolis Intl altimeter setting and increase all MDA 160 feet; and increase S-27 and Circling Cat C/D visibility 1/2 mile. Helicopter visibility reduction below 3/4 SM NA. Night landing: Rwy 9 NA.

**MISSED APPROACH:** Climb to 3000 on RID R-291 to NEWTO INT/30.6 DME and hold.

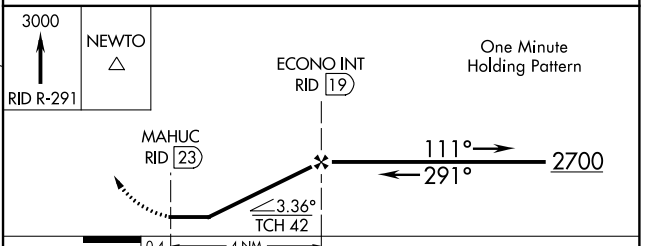
INDIANAPOLIS APP CON <b>135.45 317.8</b>	UNICOM <b>123.05 (CTAF) 0</b>
---	----------------------------------



ELEV 1088	TDZE 1087
-----------	-----------



FAF to MAP 4 NM					
Knots	60	90	120	150	180
Min:Sec	4:00	2:40	2:00	1:36	1:20



CATEGORY	A	B	C	D
S-27	1660-1	573 (500-1)	1660-1 1/8	573 (500-1 1/8)
<b>CIRCLING</b>	1660-1	572 (600-1)	1760-2 672 (700-2)	1760-2 1/4 672 (700-2 1/4)

EC-2: 07 DEC 2017 to 04 JAN 2018

EC-2: 07 DEC 2017 to 04 JAN 2018