

(HELNS.HELNS5) 17173  
**HELNS FIVE ARRIVAL**

AL-330 (FAA)

PORTLAND, OREGON

PORTLAND APP CON  
 124.35 299.2  
 PORTLAND INTL D-ATIS  
 128.35 269.9  
 PORTLAND-HILLSBORO ATIS  
 127.65

SEATTLE  
 116.8 SEA  
 Chan 115  
 N47°26.12'-W122°18.58'  
 L-1, H-1

BUWZO  
 N46°57.14'  
 W122°18.58'

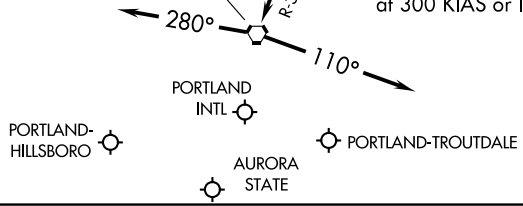
10000  
 \*8000  
 161°  
 (42)

HELNS  
 N46°15.42'  
 W122°18.58'

NOTE: DME and RADAR required.

BATTLE GROUND  
 116.6 BTG  
 Chan 113  
 N45°44.87'-W122°35.49'

KRATR  
 N46°05.39'-W122°24.17'  
**PROP/TURBOPROP:**  
 Cross at and maintain 10000.  
**TURBOJET:**  
 Cross at and maintain 12000  
 at 300 KIAS or less.



NOTE: Chart not to scale.

**ARRIVAL ROUTE DESCRIPTION**

**SEATTLE TRANSITION (SEA.HELNS5):** From over SEA VORTAC via SEA R-161 and BTG R-360 to HELNS DME FIX. Thence. . . .  
 . . . . from over HELNS on BTG VORTAC R-360 to KRATR, thence as depicted to BTG VORTAC. Thence. . . .  
 . . . . **LANDING EAST:** Depart BTG VORTAC heading 280° for vectors to the final approach course.  
 . . . . **LANDING WEST:** Depart BTG VORTAC heading 110° for vectors to the final approach course.

NW-1, 17 AUG 2017 to 14 SEP 2017

NW-1, 17 AUG 2017 to 14 SEP 2017

**HELNS FIVE ARRIVAL**  
 (HELNS.HELNS5) 20SEP12

PORTLAND, OREGON