

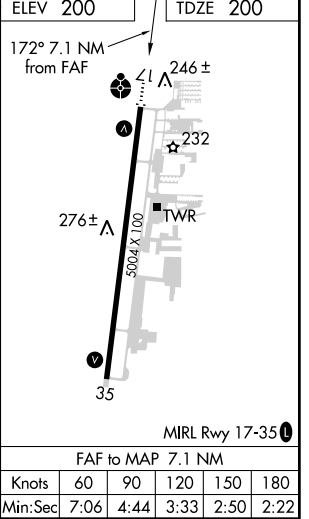
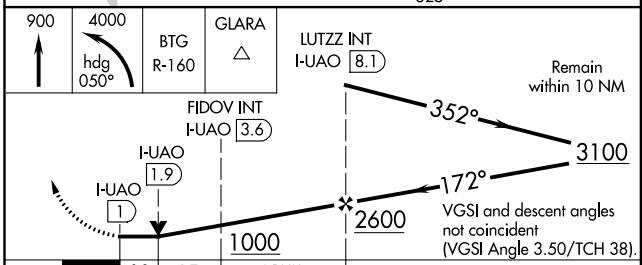
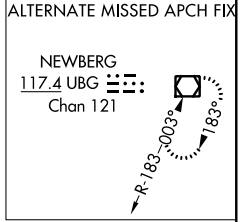
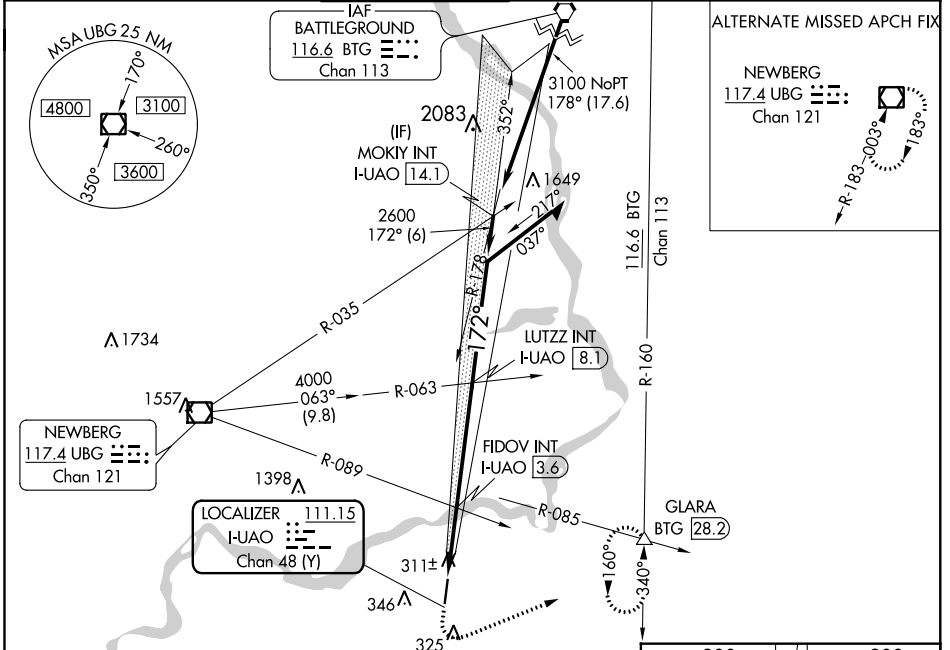
LOC/DME I-UAO 111.15 Chan 48 (Y)	APP CRS 172°	Rwy Idg 5004 TDZE 200 Apt Elev 200
--	------------------------	---

LOC RWY 17

AURORA STATE (UAO)

▼ Rwy 17 helicopter visibility reduction below 3/4 SM NA.
▲ FIDOV fix minimums: Inop table does not apply to Cats C/D.
 For inop ALS, increase S-17 Cats C/D visibility to 2 1/2 SM.

ATIS ★ 118.525	PORTLAND APP CON 126.0 269.175	AURORA TOWER ★ 120.35 (CTAF) 0	GND CON 119.15	CLNC DEL 119.15	PORTLAND CLNC DEL 119.95 (When tower closed)
--------------------------	--	---	--------------------------	---------------------------	---



CATEGORY	A	B	C	D
S-17	1000-3/4 800 (800-3/4)	1000-1 800 (800-1)	1000-2	800 (800-2)
C CIRCLING	1000-1 800 (800-1)	1000-1 1/4 800 (800-1 1/4)	1000-2 1/2	800 (800-2 1/2)
FIDOV FIX MINIMUMS				
S-17	580-3/4	380 (400-3/4)	580-1	380 (400-1)
C CIRCLING	640-1 440 (500-1)	660-1 460 (500-1)	660-1 1/2 460 (500-1 1/2)	940-2 1/4 740 (800-2 1/4)

NW-1, 09 NOV 2017 to 07 DEC 2017

NW-1, 09 NOV 2017 to 07 DEC 2017

WAAS CH 70308 W17A	APP CRS 172°	Rwy Idg 5004 TDZE 200 Apt Elev 200
--	------------------------	---

RNAV (GPS) RWY 17

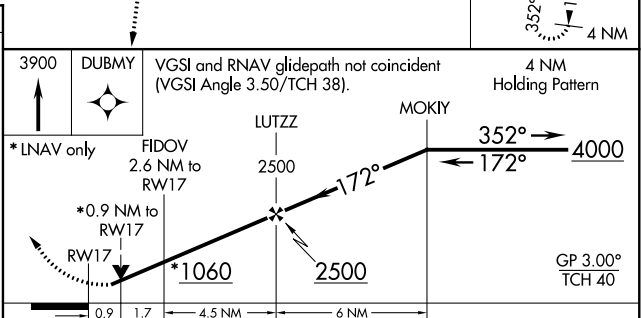
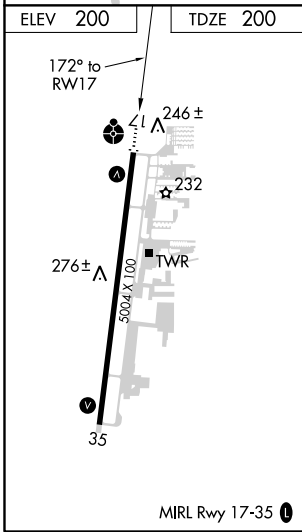
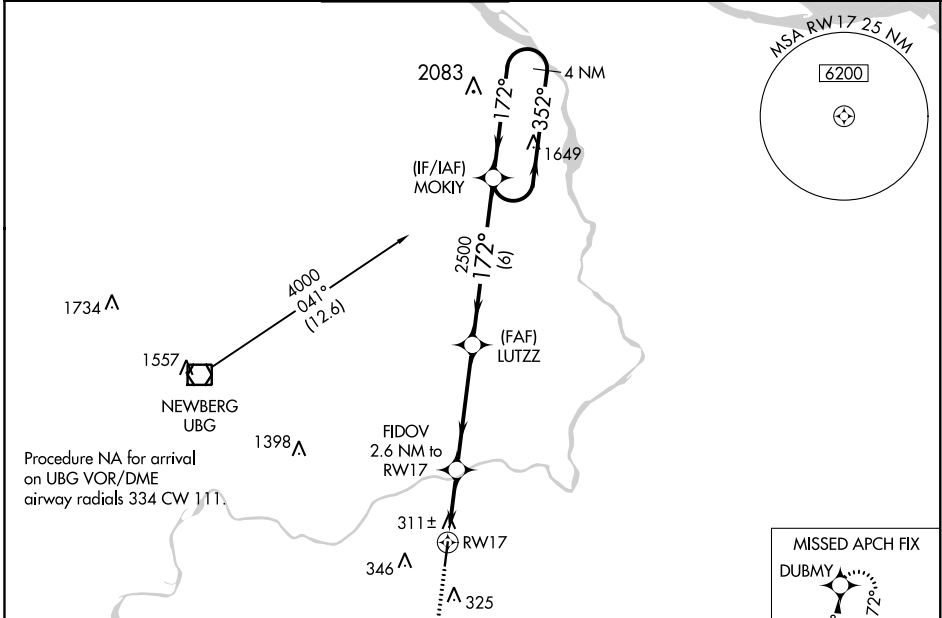
AURORA STATE (UAO)

⚠ For uncompensated Baro-VNAV systems, LNAV/VNAV NA below -6°C (22°F) or above 54°C (130°F). Rwy 17 helicopter reduction visibility below 3/4 SM NA. DME/DME RNP-0.3 NA. Inop table does not apply to LNAV Cats C/D. For Inop ALS, increase LPV all Cats visibility to 1 SM and increase LNAV/VNAV all Cats visibility to 3/8 SM.

ODALS

MISSED APPROACH:
Climb to 3900 direct DUBMY and hold, continue climb-in-hold to 3900.

ATIS ★ 118.525	PORTLAND APP CON 126.0 269.175	AURORA TOWER ★ 120.35 (CTAF)	GND CON 119.15	CLNC DEL 119.15	PORTLAND CLNC DEL 119.95 (When tower closed)
---------------------------------	---	---	---------------------------------	----------------------------------	--



CATEGORY	A	B	C	D
LPV DA		511-7/8	311 (400-7/8)	
LNAV/VNAV DA		472-3/4	272 (300-3/4)	
LNAV MDA	580-3/4	380 (400-3/4)	580-1	380 (400-1)
CIRCLING	640-1 440 (500-1)	660-1 460 (500-1)	660-1 1/2 460 (500-1 1/2)	940-2 1/4 740 (800-2 1/4)

NW-1, 09 NOV 2017 to 07 DEC 2017

NW-1, 09 NOV 2017 to 07 DEC 2017

WAAS CH 77508 W35A	APP CRS 352°	Rwy Idg 5004 TDZE 199 Apt Elev 200
--	------------------------	---

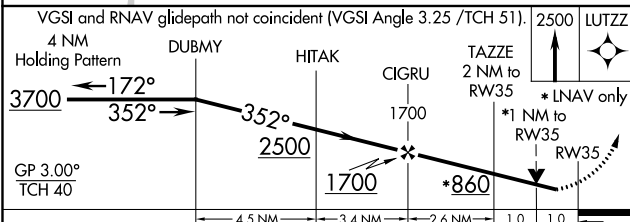
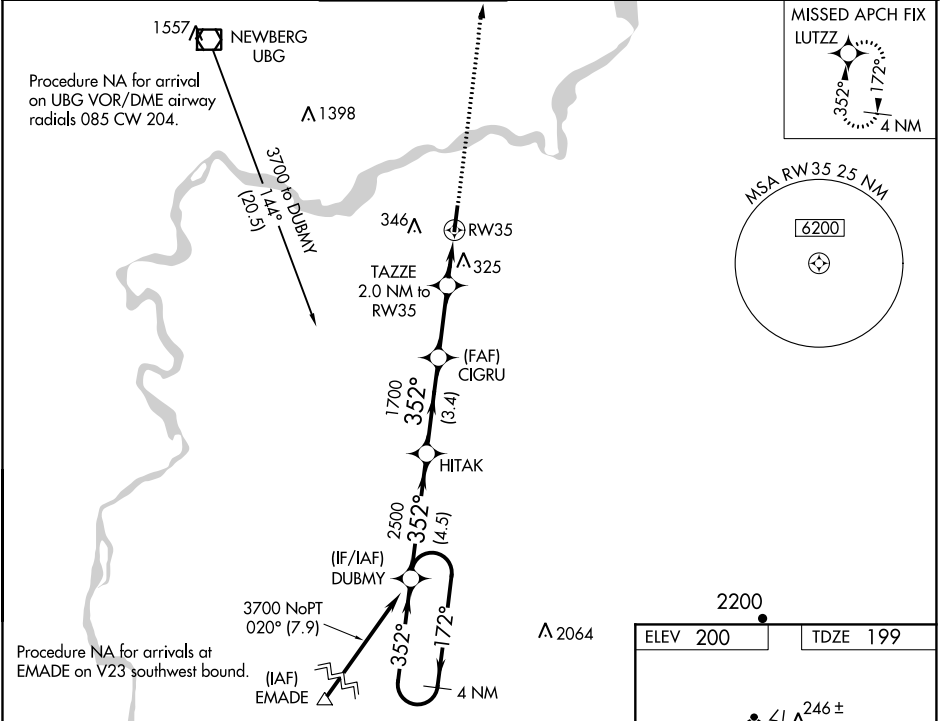
RNAV (GPS) RWY 35

AURORA STATE (UAO)

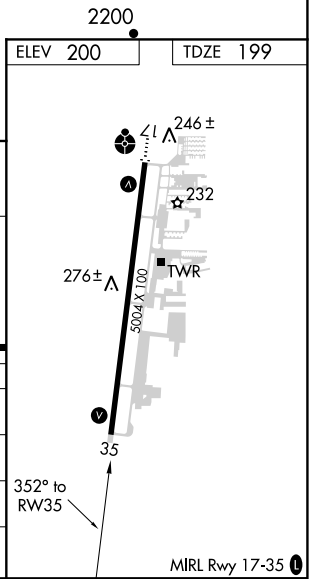
⚠ For uncompensated Baro-VNAV systems, LNAV/VNAV NA below -6°C (22°F) or above 54°C (130°F). Rwy 35 helicopter visibility reduction below ¾ SM NA. DME/DME RNP-0.3 NA.

MISSED APPROACH: Climb to 2500 direct LUTZZ and hold.

ATIS ★ 118.525	PORTLAND APP CON 126.0 269.175	AURORA TOWER ★ 120.35 (CTAF) 0	GND CON 119.15	CLNC DEL 119.15	PORTLAND CLNC DEL 119.95 (When tower closed)
--------------------------	--	--	--------------------------	---------------------------	---



CATEGORY	A	B	C	D
LPV DA	452-7/8 253 (300-7/8)			
LNAV/VNAV DA	480-1 281 (300-1)			
LNAV MDA	580-1 381 (400-1)	580-1 1/8 381 (400-1 1/8)		
C CIRCLING	640-1 440 (500-1)	660-1 460 (500-1)	660-1 1/2 460 (500-1 1/2)	940-2 1/4 740 (800-2 1/4)



NW-1, 09 NOV 2017 to 07 DEC 2017

NW-1, 09 NOV 2017 to 07 DEC 2017