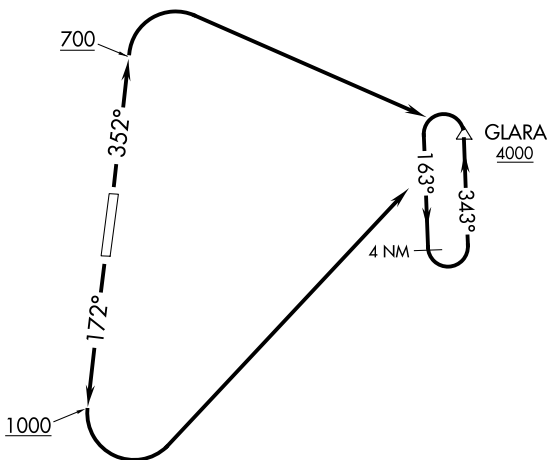


GLARA TWO DEPARTURE (RNAV)

**TOP ALTITUDE:
ASSIGNED BY ATC**

ASOS
118.525
CLNC DEL
119.15
PORTLAND CLNC DEL
119.95 (when tower closed)
GND CON
119.15
AURORA TOWER *
120.35
PORTLAND DEP CON
126.0 284.6



NOTE: RNAV 1.
NOTE: GPS required.

TAKEOFF MINIMUMS

- Rwy 17: Standard with minimum climb of 375' per NM to 1000.
- Rwy 35: Standard with minimum climb of 350' per NM to 700.

TAKEOFF OBSTACLES NOTES

- Rwy 17: Trees beginning 31' from DER, 246' right of centerline, up to 87' AGL/316' MSL.
Tree 2270' from DER, 836' left of centerline, 87' AGL/303' MSL.
Vehicle on road 254' from DER, 349' left of centerline, 16' AGL/209' MSL.
- Rwy 35: Trees beginning 30' from DER, 163' left of centerline, up to 65' AGL/329' MSL.
Vehicle on road 212' from DER, 390' left of centerline, 16' AGL/212' MSL.
Trees 973' from DER, 281' right of centerline, up to 65' AGL/253' MSL.

NOTE: Chart not to scale.



DEPARTURE ROUTE DESCRIPTION

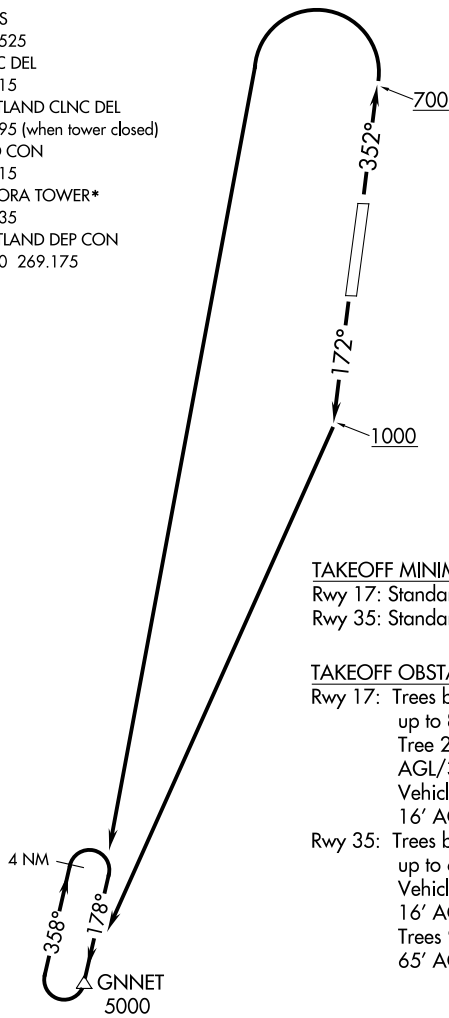
TAKEOFF RUNWAY 17: Climb heading 172° to 1000, then climbing left turn direct GLARA. Thence

TAKEOFF RUNWAY 35: Climb heading 352° to 700, then climbing right turn direct GLARA. Thence

. . . . continue climb in GLARA holding pattern to cross GLARA at or above 4000 before proceeding on course.

ASOS
118.525
CLNC DEL
119.15
PORTLAND CLNC DEL
119.95 (when tower closed)
GND CON
119.15
AURORA TOWER*
120.35
PORTLAND DEP CON
126.0 269.175

**TOP ALTITUDE:
ASSIGNED BY ATC**



NOTE: RNAV 1
NOTE: GPS required.

TAKEOFF MINIMUMS

Rwy 17: Standard with minimum climb of 375' per NM to 1000.
Rwy 35: Standard with minimum climb of 350' per NM to 2100.

TAKEOFF OBSTACLE NOTES

Rwy 17: Trees beginning 317' from DER, 246' right of centerline, up to 87' AGL/316' MSL.
Tree 2270' from DER, 836' left of centerline, 87' AGL/303' MSL.
Vehicle on road 254' from DER, 349' left of centerline, 16' AGL/209' MSL.

Rwy 35: Trees beginning 30' from DER, 163' left of centerline, up to 65' AGL/329' MSL.
Vehicle on road 212' from DER, 390' left of centerline, 16' AGL/212' MSL.
Trees 973' from DER, 281' right of centerline, up to 65' AGL/253' MSL.

NOTE: Chart not to scale.

DEPARTURE ROUTE DESCRIPTION

TAKEOFF RUNWAY 17: Climb heading 172° to 1000, then climbing right turn direct GNNET.
Thence

TAKEOFF RUNWAY 35: Climb heading 352° to 700, then climbing left turn direct GNNET.
Thence

. . . . continue climb in GNNET holding pattern to cross GNNET at or above 5000 before proceeding on course.

(UBG2.UBG) 17117

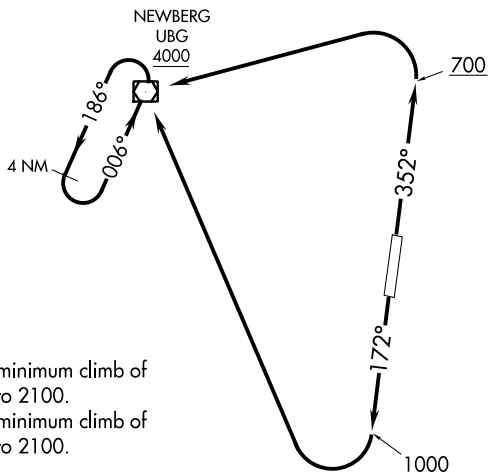
NEWBERG TWO DEPARTURE (RNAV)

SL-5722 (FAA)

AURORA STATE (UAO)
AURORA, OREGON

ASOS
118.525
CLNC DEL
119.15
PORTLAND CLNC DEL
119.95 (when tower closed)
GND CON
119.15
AURORA TOWER*
120.35
PORTLAND DEP CON
126.0 269.175

**TOP ALTITUDE:
ASSIGNED BY ATC**



NOTE: RNAV 1.
NOTE: GPS required.

TAKEOFF MINIMUMS

Rwy 17: Standard with minimum climb of 375' per NM to 2100.
Rwy 35: Standard with minimum climb of 350' per NM to 2100.

TAKEOFF OBSTACLES NOTES

Rwy 17: Trees beginning 31' from DER, 246' right of centerline, up to 87' AGL/316' MSL.
Tree 2270' from DER, 836' left of centerline, 87' AGL/303' MSL. Vehicle on road 254' from DER, 349' left of centerline, 16' AGL/209' MSL.
Rwy 35: Trees beginning 30' from DER, 163' left of centerline, up to 65' AGL/329' MSL.
Vehicle on road 212' from DER, 390' left of centerline, 16' AGL/212' MSL.
Trees 973' from DER, 281' right of centerline, up to 65' AGL/253' MSL.

NOTE: Chart not to scale.

DEPARTURE ROUTE DESCRIPTION

TAKEOFF RUNWAY 17: Climb heading 172° to 1000, then climbing right turn direct UBG VOR/DME. Thence

TAKEOFF RUNWAY 35: Climb heading 352° to 700, then climbing left turn direct UBG VOR/DME. Thence

. . . continue climb in hold UBG VOR/DME holding pattern to cross UBG VOR/DME at or above 4000 before proceeding on course.

NEWBERG TWO DEPARTURE (RNAV)

(UBG2.UBG) 27APR17

AURORA, OREGON
AURORA STATE (UAO)

NW-1, 22 JUN 2017 to 20 JUL 2017

NW-1, 22 JUN 2017 to 20 JUL 2017