

(RICHY6.SWR) 17229

RICHY SIX DEPARTURE

SL-5416 (FAA)

LAKE TAHOE (TVL)
SOUTH LAKE TAHOE, CALIFORNIA

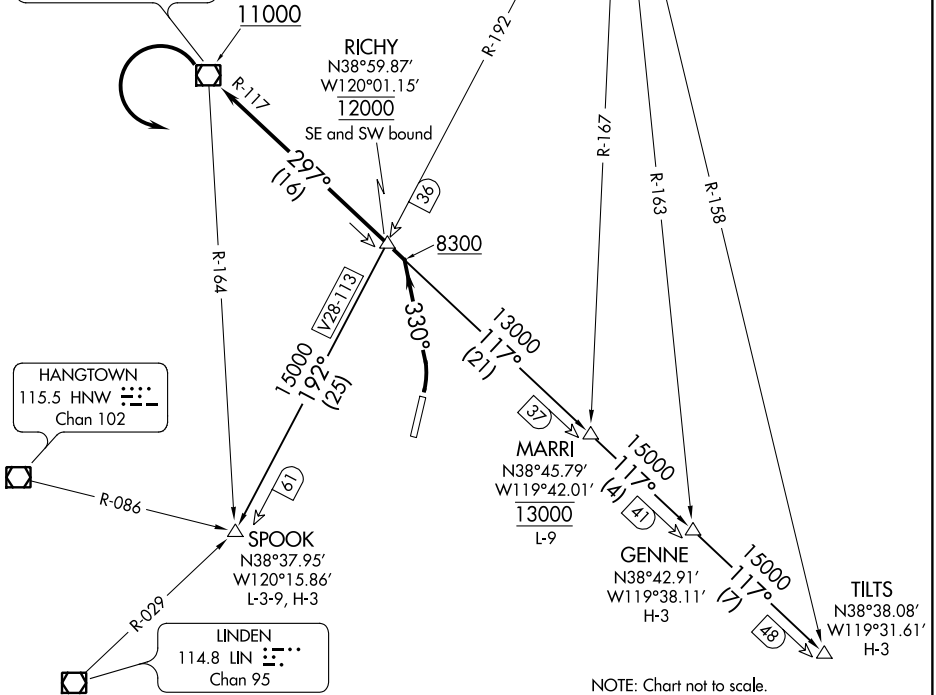
NOTE: Minimum crossing altitude at RICHY INT northwest bound, direct SWR VOR/DME: 8300.

NOTE: This SID requires a minimum climb rate of 400' per NM to 10000.

OAKLAND CENTER
127.95 316.1
CLNC DEL
134.3
CTAF
122.85

MUSTANG
117.9 FMG
Chan 126

SQUAW VALLEY
113.2 SWR
Chan 79
N39°10.83'-W120°16.18'



NOTE: Chart not to scale.

SW-2, 14 SEP 2017 to 12 OCT 2017

SW-2, 14 SEP 2017 to 12 OCT 2017



DEPARTURE ROUTE DESCRIPTION

TAKEOFF RUNWAY 36: Turn left heading 330° thence. . . .

. . . . intercept SWR R-117 at or above 8300 continue climb northwest bound on SWR R-117 to SWR VOR/DME. Cross SWR VOR/DME at or above 11000. Aircraft cleared via a transition, reverse course to the left after crossing the SWR VOR/DME, and proceed to RICHY INT via SWR R-117. Cross RICHY INT at 12000 southeast and southwest bound, thence via (transition).

GENNE TRANSITION (RICHY6.GENNE): From over RICHY INT on SWR R-117 to GENNE INT.

MARRI TRANSITION (RICHY6.MARRI): From over RICHY INT on SWR R-117 to MARRI INT.

SPOOK TRANSITION (RICHY6.SPOOK): From over RICHY INT on FMG R-192 to SPOOK INT.

TILTS TRANSITION (RICHY6.TILTS): From over RICHY INT on SWR R-117 to TILTS INT.

RICHY SIX DEPARTURE

(RICHY6.SWR) 10NOV16

SOUTH LAKE TAHOE, CALIFORNIA
LAKE TAHOE (TVL)

(SHOLE2.SHOLE) 17229

SHOLE TWO DEPARTURE

SL-5416 (FAA)

LAKE TAHOE (TVL)
SOUTH LAKE TAHOE, CALIFORNIA

OAKLAND CENTER
127.95 316.1
CLNC DEL
134.3
CTAF
122.85

SQUAW VALLEY
113.2 SWR
Chan 79

MUSTANG
117.9 FMG
Chan 126
N39°31.88'-W119°39.36'
L-9, H-3

HANGTOWN
115.5 HNW
Chan 102

SHOLE
N39°04.23'
W119°57.76'

LOCALIZER
I-TVL 108.9
Chan 26

LINDEN
114.8 LIN
Chan 95

SPOOK
N38°37.95'
W120°15.86'
L-3-9, H-3

NOTE: This SID requires a minimum climb of 300' per NM to 9000.

NOTE: DME required.

NOTE: Chart not to scale.

DEPARTURE ROUTE DESCRIPTION

TAKEOFF RUNWAY 18: NA.

TAKEOFF RUNWAY 36: Climb northbound via I-TVL localizer north course to SHOLE I-TVL 9.7 DME Fix. Continue climb in SHOLE 9.7 DME holding pattern until reaching 13000, thence via (transition) or (assigned route).

MUSTANG TRANSITION (SHOLE2.FMG): From over SHOLE DME on FMG R-192 to FMG VORTAC.

SPOOK TRANSITION (SHOLE2.SPOOK): From over SHOLE DME on FMG R-192 to SPOOK INT.

SHOLE TWO DEPARTURE

(SHOLE2.SHOLE) 10NOV16

SOUTH LAKE TAHOE, CALIFORNIA
LAKE TAHOE (TVL)

SW-2, 14 SEP 2017 to 12 OCT 2017

SW-2, 14 SEP 2017 to 12 OCT 2017