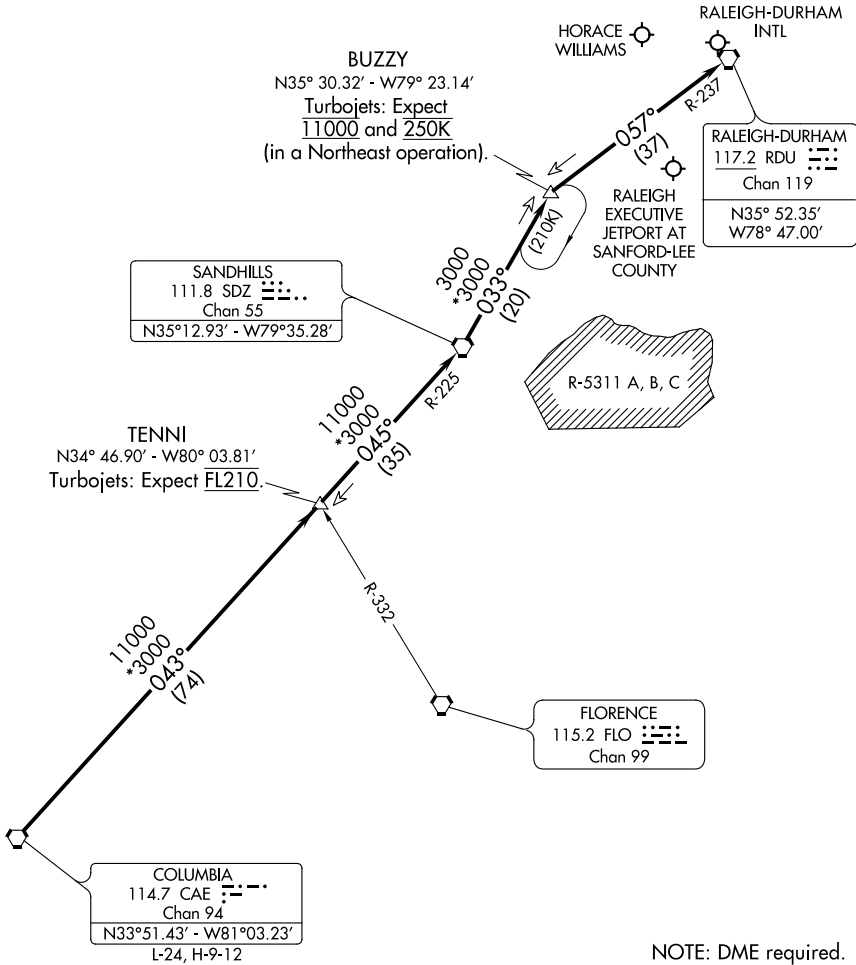


# BUZZY SIX ARRIVAL

RALEIGH/DURHAM, NORTH CAROLINA

RALEIGH APP CON  
128.3 307.9  
RALEIGH-DURHAM D-ATIS  
123.8

PERSON COUNTY      HENDERSON-  
OXFORD



NOTE: DME required.

NOTE: Chart not to scale.

## ARRIVAL ROUTE DESCRIPTION

From over Columbia (CAE) via CAE R-043 and Sandhills (SDZ) R-225 to SDZ. Thence via SDZ R-033 to BUZZY INT. Thence via Raleigh-Durham (RDU) R-237 to RDU. Expect RADAR vectors to final approach course after BUZZY INT.

# BUZZY SIX ARRIVAL

(BUZZY.BUZZY6) 30OCT03

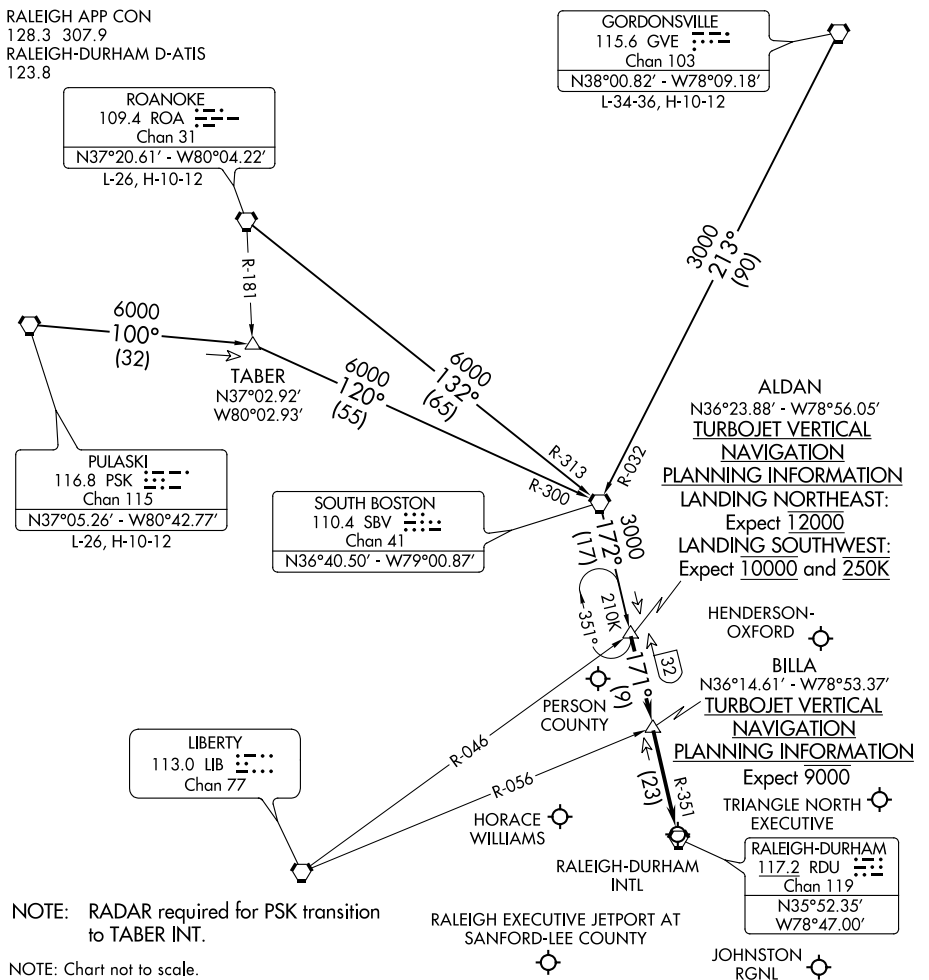
RALEIGH/DURHAM, NORTH CAROLINA

SE-2, 14 SEP 2017 to 12 OCT 2017

SE-2, 14 SEP 2017 to 12 OCT 2017

# SOUTH BOSTON FOUR ARRIVAL

RALEIGH-DURHAM, NORTH CAROLINA



SE-2, 14 SEP 2017 to 12 OCT 2017

SE-2, 14 SEP 2017 to 12 OCT 2017

NOTE: RADAR required for PSK transition to TABER INT.

NOTE: Chart not to scale.

**GORDONSVILLE TRANSITION (GVE.SBV4):** From over GVE VORTAC via GVE R-213 and SBV R-032 to SBV VORTAC, then via SBV R-172 to ALDAN INT. Thence. . . .

**PULASKI TRANSITION (PSK.SBV4):** From over PSK VORTAC via PSK R-100 and SBV R-300 to SBV VORTAC, then via SBV R-172 to ALDAN INT. Thence. . . .

**ROANOKE TRANSITION (ROA.SBV4):** From over ROA VORTAC via ROA R-132 and SBV R-313 to SBV VORTAC, then via SBV R-172 to ALDAN INT. Thence. . . .

. . . .from over ALDAN INT via RDU R-351 to BILLA INT, then via RDU R-351 to RDU VORTAC. For arrival to Raleigh-Durham Intl (RDU), Franklin County (LHZ), Horace Williams (IGX), Johnston County (JNX) and Sanford-Lee County Rgnl (TTA) airports: Expect RADAR vectors to final approach course after BILLA INT. For arrival to Henderson-Oxford (HNZ) and Person County (TDF) airports: Expect RADAR vectors to final approach course after ALDAN INT.

# SOUTH BOSTON FOUR ARRIVAL

RALEIGH-DURHAM, NORTH CAROLINA