

APP CRS	Rwy Idg	<b>3405</b>
<b>222°</b>	TDZE	<b>7</b>
	Apt Elev	<b>8</b>

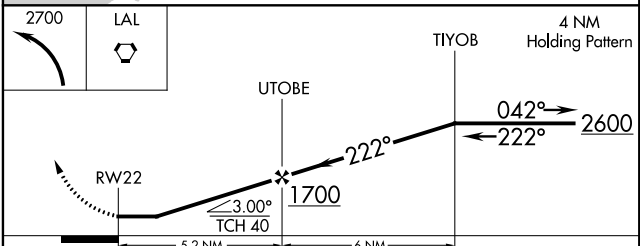
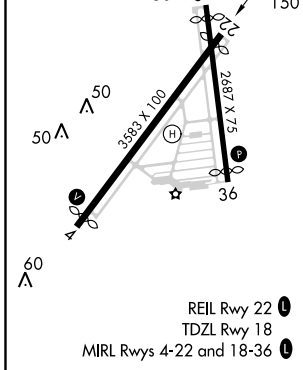
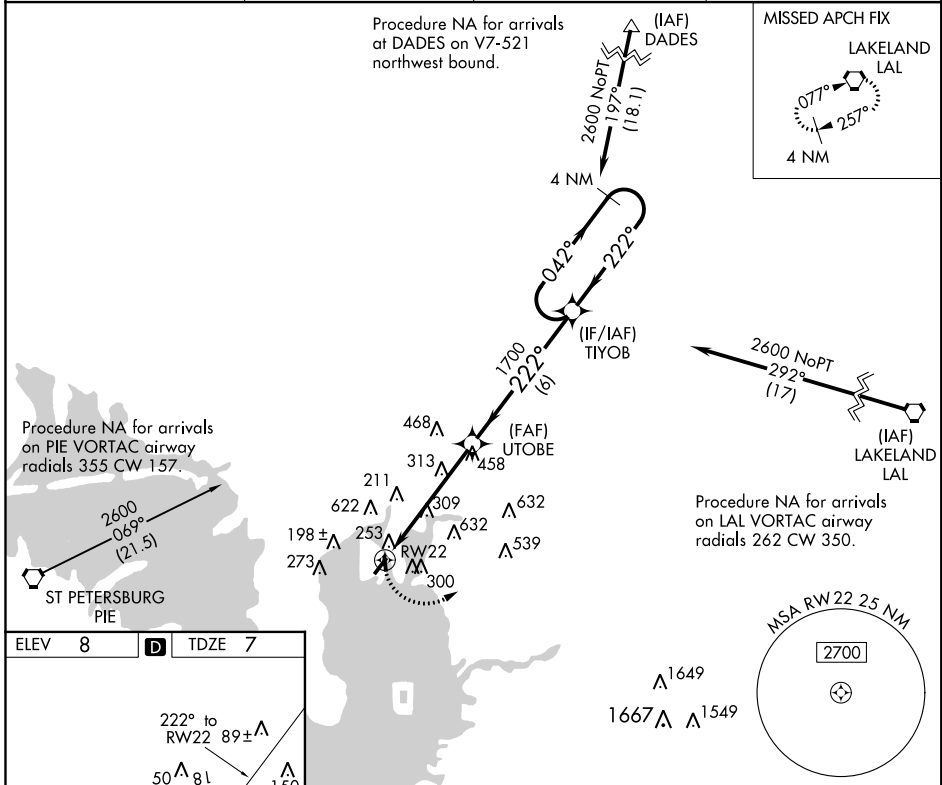
# RNAV (GPS) RWY 22

PETER O KNIGHT (TPF)

**⚠** DME/DME RNP-0.3 NA. Helicopter visibility reduction below 1 SM NA. When local altimeter setting not received, use Tampa Intl altimeter setting and increase all MDA 20 feet. Night landing: Rwy 4, 22 NA. Circling NA to Rwy 18. Circling NA northwest of Rwy 4-22.

**⚠** MISSED APPROACH: Climbing left turn to 2700 direct LAL VORTAC and hold.

AWOS-3 <b>118.925</b>	TAMPA APP CON <b>119.9 290.3</b>	CLNC DEL <b>119.8</b>	UNICOM <b>122.725 (CTAF) 0</b>
--------------------------	-------------------------------------	--------------------------	-----------------------------------



CATEGORY	A	B	C	D
LNAV MDA	580-1	573 (600-1)	NA	
CIRCLING	660-1 652 (700-1)	700-1 692 (700-1)	NA	

SE-3, 22 JUN 2017 to 20 JUL 2017

SE-3, 22 JUN 2017 to 20 JUL 2017

WAAS CH <b>63220</b> <b>W36A</b>	APP CRS <b>344°</b>	Rwy Idg <b>2283</b> TDZE <b>8</b> Apt Elev <b>8</b>
--	------------------------	---

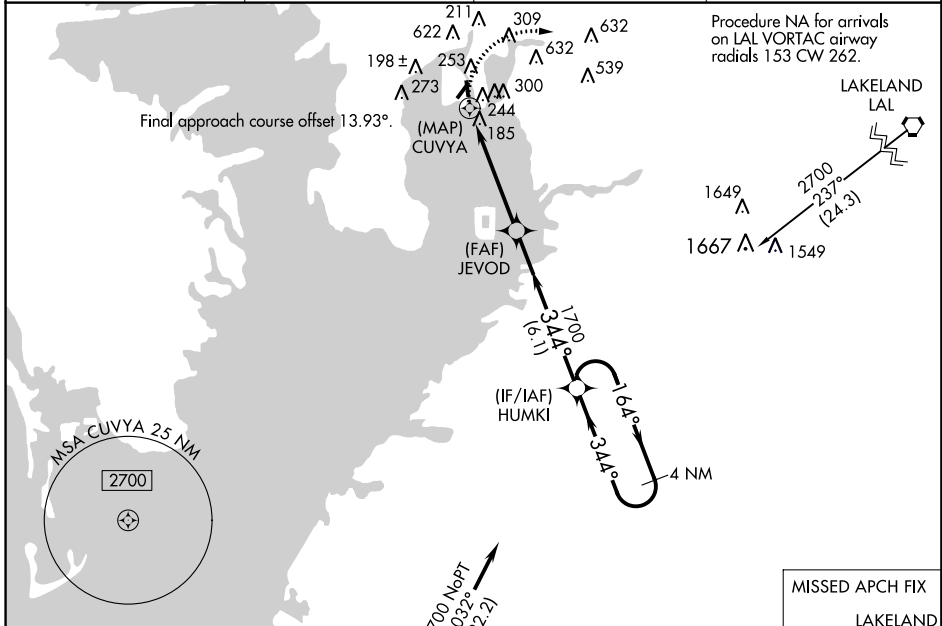
# RNAV (GPS) RWY 36

PETER O KNIGHT (TPF)

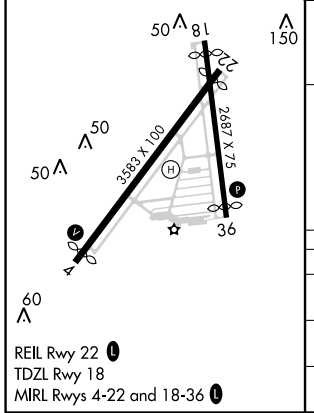
**⚠** Circling NA northwest of Rwy 4-22. DME/DME RNP-0.3 NA. When local altimeter setting not received, use Tampa Intl altimeter setting and increase all MDA 20 feet. Helicopter visibility reduction below 1 SM NA. Straight-in minimums NA at night. Night Landing: Rwy 4, 22 NA. Circling NA to Rwy 18.

**⚠** MISSED APPROACH: Climbing right turn to 2700 direct LAL VORTAC and hold.

AWOS-3 <b>118.925</b>	TAMPA APP CON <b>119.9 290.3</b>	CLNC DEL <b>119.8</b>	UNICOM <b>122.725 (CTAF)</b>
--------------------------	-------------------------------------	--------------------------	---------------------------------

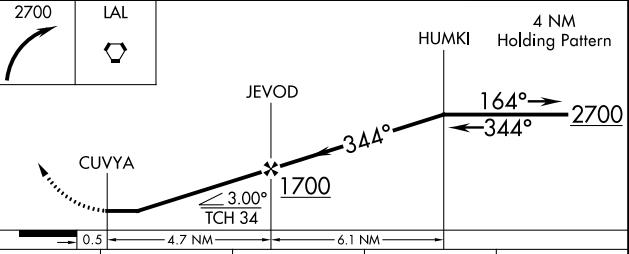


ELEV 8	<b>D</b>	TDZE 8
--------	----------	--------



(IAF) SARASOTA SRQ Procedure NA for arrivals at SRQ VOR/DME on V579 southbound.

MISSED APCH FIX LAKELAND LAL 4 NM



CATEGORY	A	B	C	D
LP MDA	440-1	432 (500-1)		NA
LNAV MDA	500-1	492 (500-1)		NA
CIRCLING	660-1 652 (700-1)	700-1 692 (700-1)		NA