

ARRIVAL ROUTE DESCRIPTION

HECTOR TRANSITION (HEC.KAYOH5): From over HEC VORTAC via HEC R-211 and PDZ R-030 to DAWNA INT, then via HDF R-353 to HDF VOR, then via HDF R-257 to FRET5 INT, then via HDF R-257 and SLI R-075 to KAYOH INT. Thence. . .

PALM SPRINGS TRANSITION (PSP.KAYOH5): From over PSP VORTAC via PSP R-260 to BANDS INT, then via HDF R-054 to HDF VOR, then via HDF R-257 to FRET5 INT, then via HDF R-257 and SLI R-075 to KAYOH INT. Thence. . .

. . .from over KAYOH INT via SLI R-075 to SLI VORTAC. Expect RADAR vectors to final approach course.

SOCAL APP CON
133.85 346.35
FULLERTON MUNI ATIS
125.05
LONG BEACH ATIS
127.75
ORANGE COUNTY ATIS
126.0
TORRANCE MUNI ATIS
125.6

HECTOR
112.7 HEC
Chan 74
N34°47.82'
W116°27.78'
L-7, H-4

DAWNA
N34°15.90'-W117°06.78'
**VERTICAL NAVIGATION
PLANNING INFORMATION**
TURBOJET: Expect 13000
NON-TURBOJET: Expect 12000

BANDS
N33°53.38'-W116°50.97'
**VERTICAL NAVIGATION
PLANNING INFORMATION**
Expect 14000

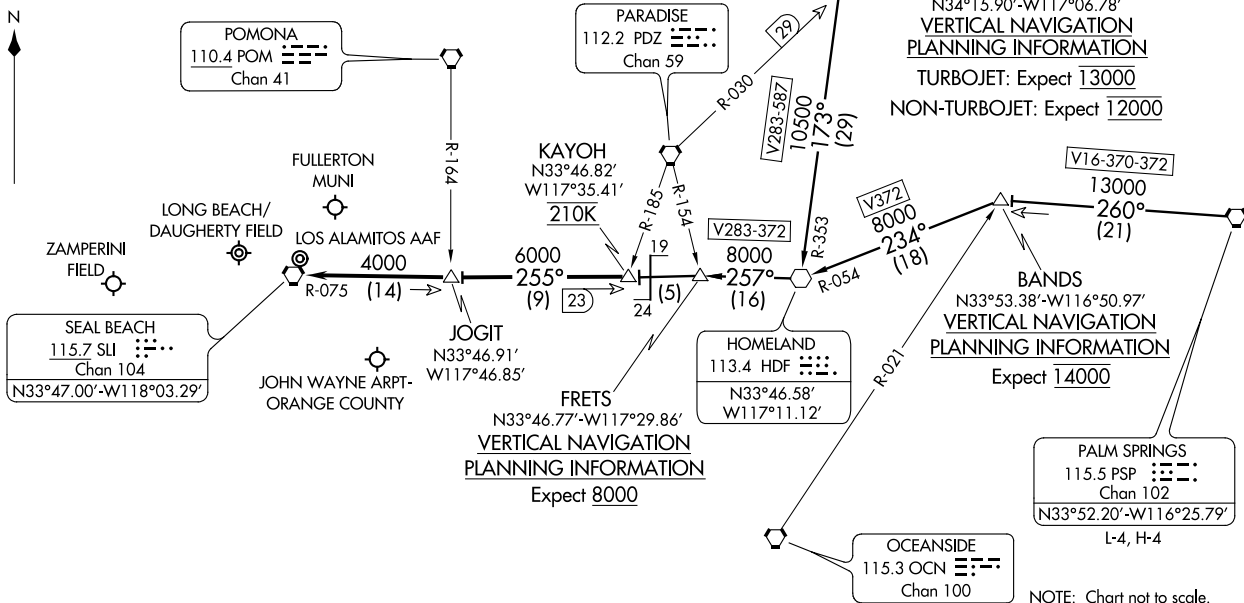
FRET5
N33°46.77'-W117°29.86'
**VERTICAL NAVIGATION
PLANNING INFORMATION**
Expect 8000

HOMELAND
113.4 HDF
N33°46.58'
W117°11.12'

OCEANSIDE
115.3 OCN
Chan 100

PALM SPRINGS
115.5 PSP
Chan 102
N33°52.20'-W116°25.79'
L-4, H-4

NOTE: Chart not to scale.



KAYOH FIVE ARRIVAL
(KAYOH,KAYOH5) 14093

LONG BEACH, CALIFORNIA

KAYOH FIVE ARRIVAL
(KAYOH,KAYOH5) 14093

SI-236 (FAA)

LONG BEACH, CALIFORNIA