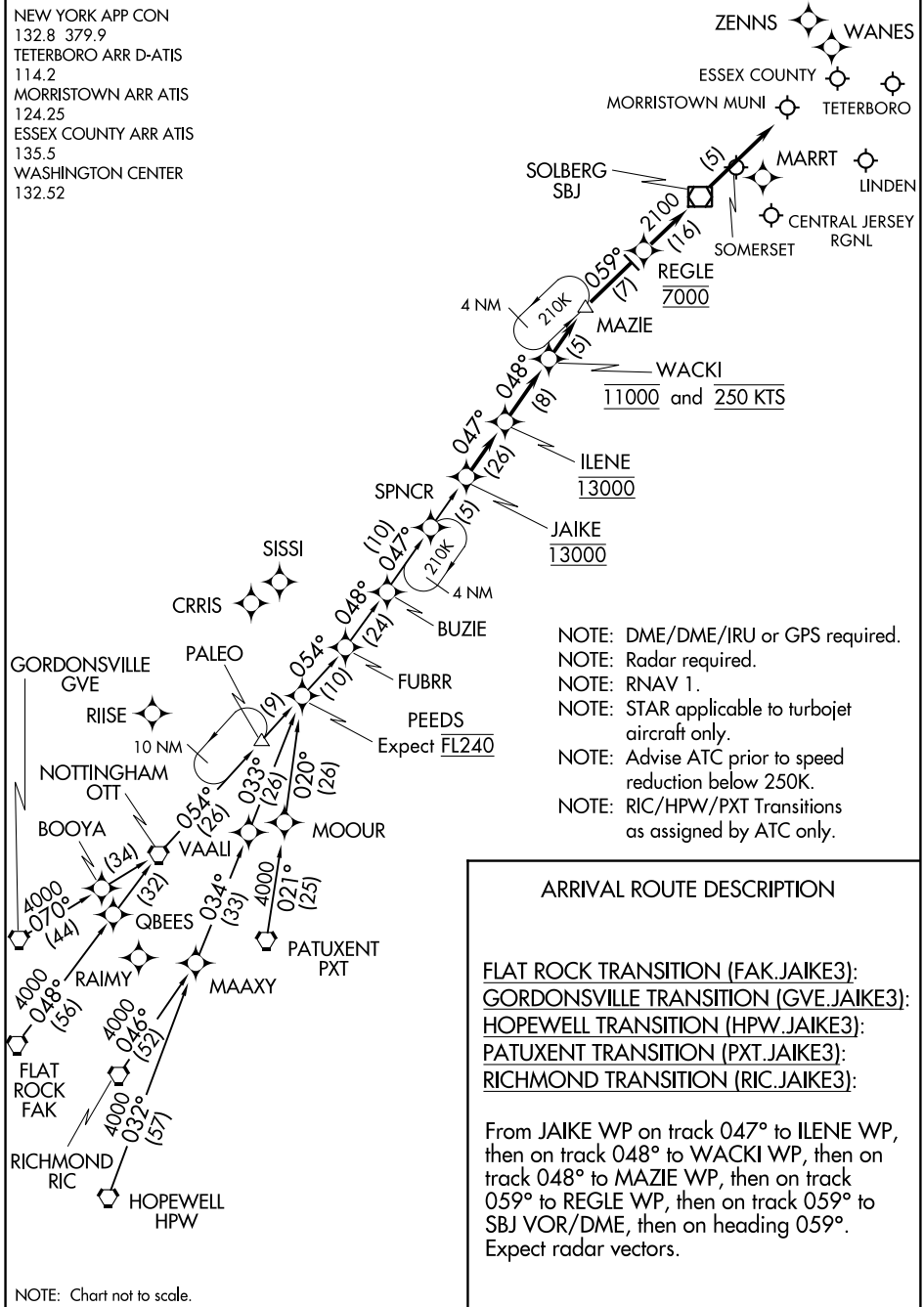


JAIKE THREE ARRIVAL (RNAV)

TETERBORO, NEW JERSEY

NEW YORK APP CON
 132.8 379.9
 TETERBORO ARR D-ATIS
 114.2
 MORRISTOWN ARR ATIS
 124.25
 ESSEX COUNTY ARR ATIS
 135.5
 WASHINGTON CENTER
 132.52



NOTE: Chart not to scale.

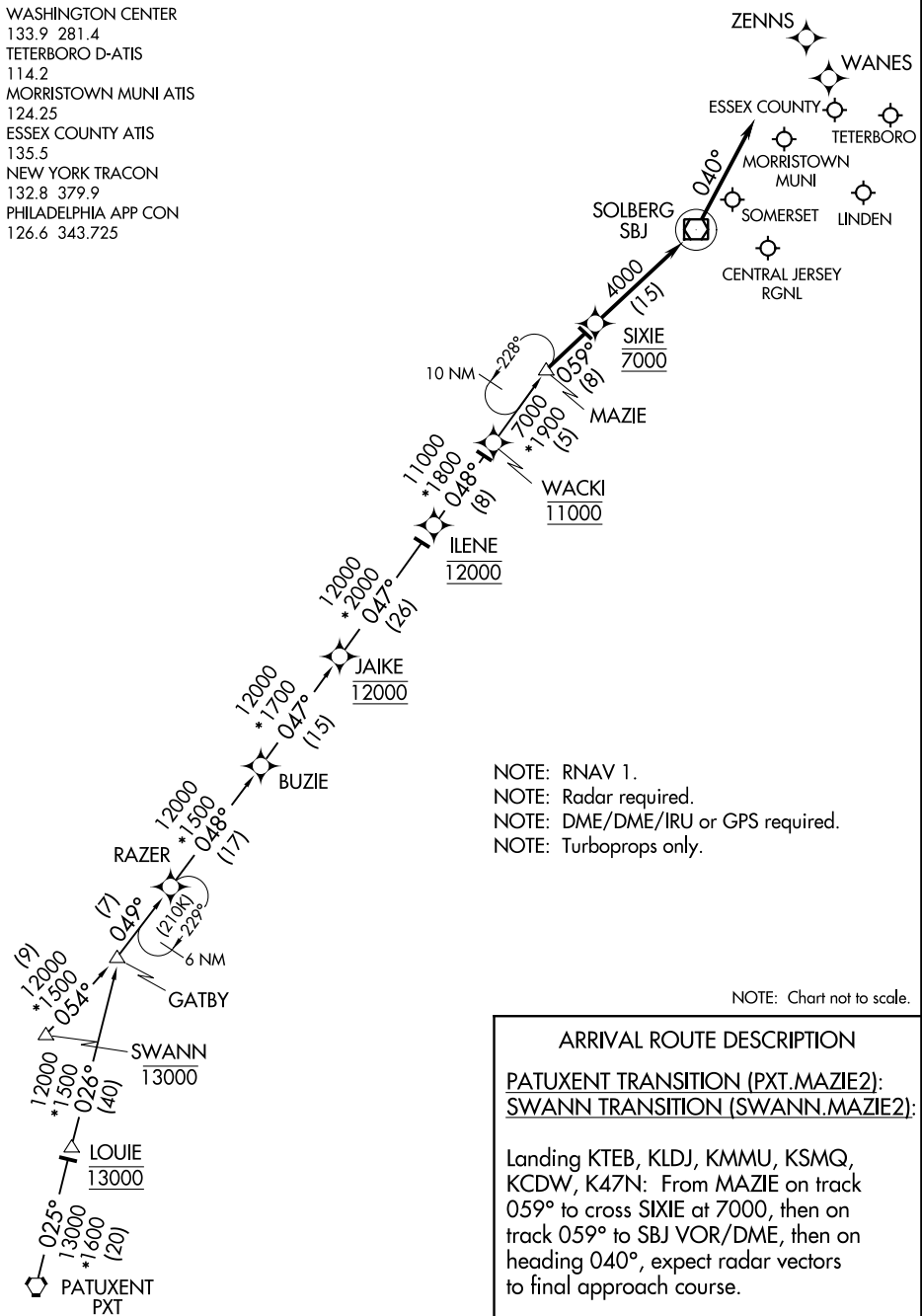
JAIKE THREE ARRIVAL (RNAV)

TETERBORO, NEW JERSEY

MAZIE TWO ARRIVAL (RNAV)

TETERBORO, NEW JERSEY

WASHINGTON CENTER
 133.9 281.4
 TETERBORO D-ATIS
 114.2
 MORRISTOWN MUNI ATIS
 124.25
 ESSEX COUNTY ATIS
 135.5
 NEW YORK TRACON
 132.8 379.9
 PHILADELPHIA APP CON
 126.6 343.725



NOTE: RNAV 1.
 NOTE: Radar required.
 NOTE: DME/DME/IRU or GPS required.
 NOTE: Turboprops only.

NOTE: Chart not to scale.

ARRIVAL ROUTE DESCRIPTION

PATUXENT TRANSITION (PXT.MAZIE2):
SWANN TRANSITION (SWANN.MAZIE2):

Landing KTEB, KLDJ, KMMU, KSMQ, KCDW, K47N: From MAZIE on track 059° to cross SIXIE at 7000, then on track 059° to SBJ VOR/DME, then on heading 040°, expect radar vectors to final approach course.

NE-2, 14 SEP 2017 to 12 OCT 2017

NE-2, 14 SEP 2017 to 12 OCT 2017

MAZIE TWO ARRIVAL (RNAV)

TETERBORO, NEW JERSEY

(LVZ.LVZ4) 20OCT11

WILKES-BARRE FOUR ARRIVAL

TETERBORO, NEW JERSEY

NEW YORK APP CON
127.6 379.9
NEWARK D-ATIS
115.7

JAMESTOWN
114.7 JHW
Chan 94
N42°11.32'-W79°07.28'
L-30, H-10

ELMIRA
109.65 ULW
Chan 33 (Y)

DMACK
N41°47.15'
W77°33.12'

WILKES-BARRE
111.6 LVZ
Chan 53
N41°16.37'-W75°41.37'
Expect FL180

HUGUENOT
116.1 HUO
Chan 108

HOXIE
N41°51.90'
W77°51.16'

SPARTA
115.7 SAX
Chan 104

STENT
N41°40.74'
W77°09.17'

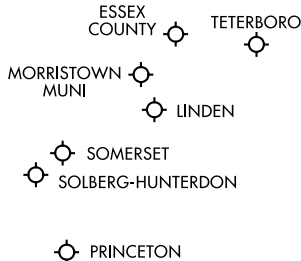
STILLWATER
109.6 STW
Chan 33
N40°59.75'-W74°52.14'

SLATE RUN
113.9 SLT
Chan 86

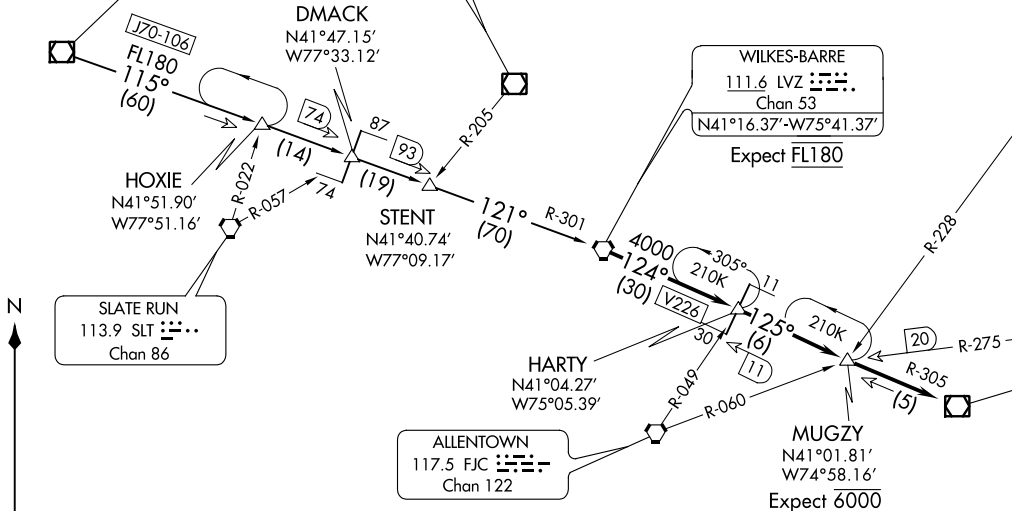
HARTY
N41°04.27'
W75°05.39'

MUGZY
N41°01.81'
W74°58.16'
Expect 6000

ALLENTOWN
117.5 FJC
Chan 122



NOTE: This STAR applicable to all aircraft capable of 250 KIAS or greater landing at Teterboro, Morristown Muni, Essex County, Princeton, Solberg-Hunterdon, Linden, and Somerset.
NOTE: Advise ATC prior to speed reduction below 250 Knots.



ARRIVAL ROUTE DESCRIPTION

JAMESTOWN TRANSITION (JHW.LVZ4): From over JHW VOR/DME on JHW R-115 and LVZ R-301 to LVZ VORTAC. Thence

. . . . from over LVZ VORTAC, on LVZ R-124 and STW R-305 to STW VOR/DME. Expect radar vectors to final approach course.

NOTE: Chart not to scale.

(LVZ.LVZ4) 17117

WILKES-BARRE FOUR ARRIVAL

TETERBORO, NEW JERSEY

AL-890 (FAA)