

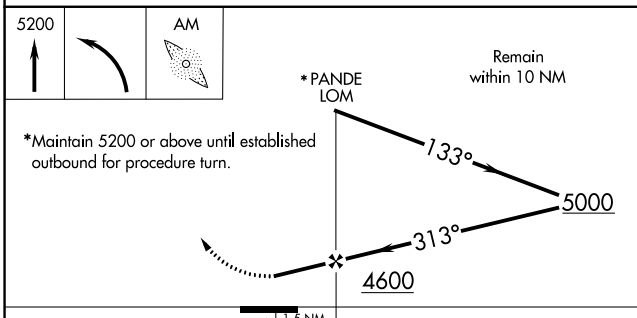
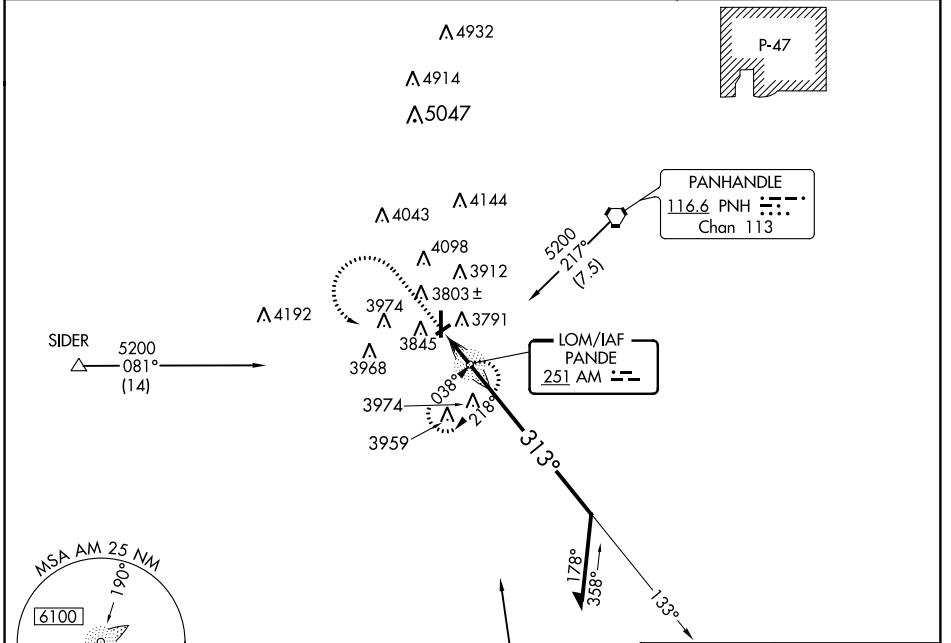
NDB AM 251	APP CRS 313°	Rwy Idg TDZE Apt Elev	N/A N/A 3648
----------------------	------------------------	--------------------------	---------------------------

NDB-A
TRADEWIND (TDW)

NA Use Rick Husband Amarillo Intl altimeter setting. Circling NA to runway 5-23. Circling to Rwy 35 NA at night. Helicopter visibility reduction below 1 SM NA.

MISSED APPROACH: Climb to 5200, then left turn direct AM LOM and hold.

AWOS-AV 118.475	AMARILLO APP CON * 119.5 307.0	CLNC DEL 125.4	UNICOM 122.8 (CTAF) 0
---------------------------	--	--------------------------	--



CATEGORY	A	B	C	D
CIRCLING	4220-1 572 (600-1)	4260-1 612 (700-1)	4260-1¾ 612 (700-1¾)	4480-2¾ 832 (900-2¾)
FAF TO MAP 1.5 NM				
Knots	60	90	120	150 180
Min:Sec	1:30	1:00	0:45	0:36 0:30

SC-2, 09 NOV 2017 to 07 DEC 2017

SC-2, 09 NOV 2017 to 07 DEC 2017

WAAS CH 42632 W35A	APP CRS 352°	Rwy Idg TDZE Apt Elev	4809 3641 3649
--	------------------------	-----------------------------	---

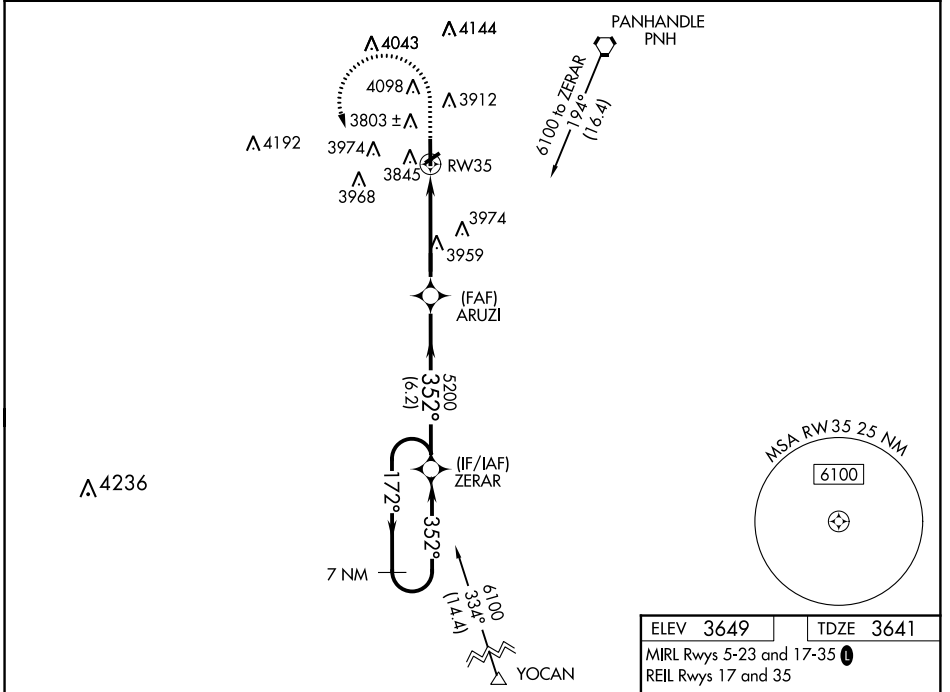
RNAV (GPS) RWY 35

TRADEWIND (TDW)

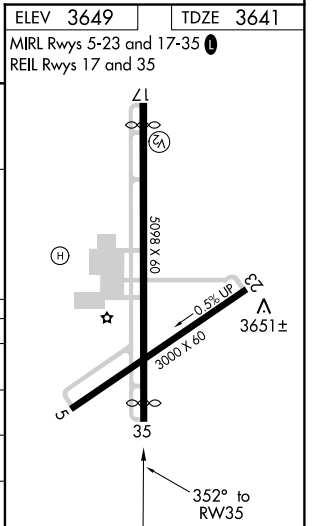
NA Baro-VNAV NA. Use Rick Husband Amarillo Intl altimeter setting; when not received, use Hereford altimeter setting and increase all DA 69 feet and all MDA 80 feet, increase LPV all Cats visibility 1/8 mile and LNAV/VNAV all Cats visibility 1/4 mile. Procedure NA at night. DME/DME RNP-0.3 NA. Helicopter visibility reduction below 15M NA.

MISSED APPROACH: Climb to 4100 then climbing left turn to 6100 direct ZERAR and hold.

AWOS-AV 118.475	AMARILLO APP CON * 119.5 307.0	CLNC DEL 125.4	UNICOM 122.8 (CTAF) 0
---------------------------	--	--------------------------	---------------------------------



7 NM Holding Pattern		4100	6100	ZERAR
ZERAR		ARUZI	RW35	
6100 ← 172°		352° →		
GP 3.00°		5200		
TCH 40		6.2 NM		4.8 NM
CATEGORY	A	B	C	D
LPV DA	3913-1	272 (300-1)		NA
LNAV/VNAV DA	3947-1	306 (300-1)		NA
LNAV MDA	4300-1	659 (700-1)		NA
CIRCLING	4300-1	651 (700-1)		NA



SC-2, 09 NOV 2017 to 07 DEC 2017

SC-2, 09 NOV 2017 to 07 DEC 2017