

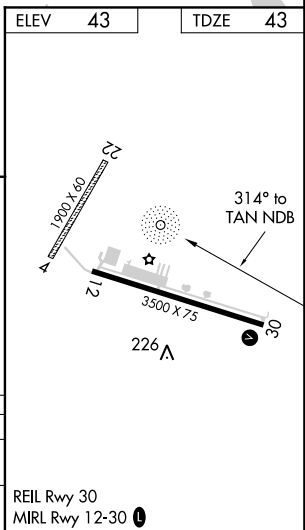
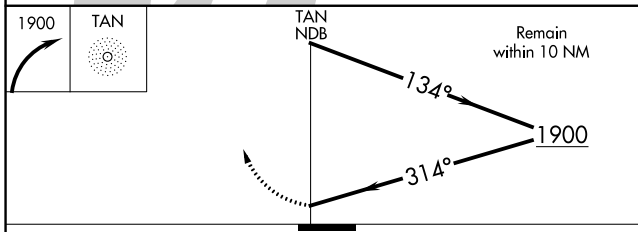
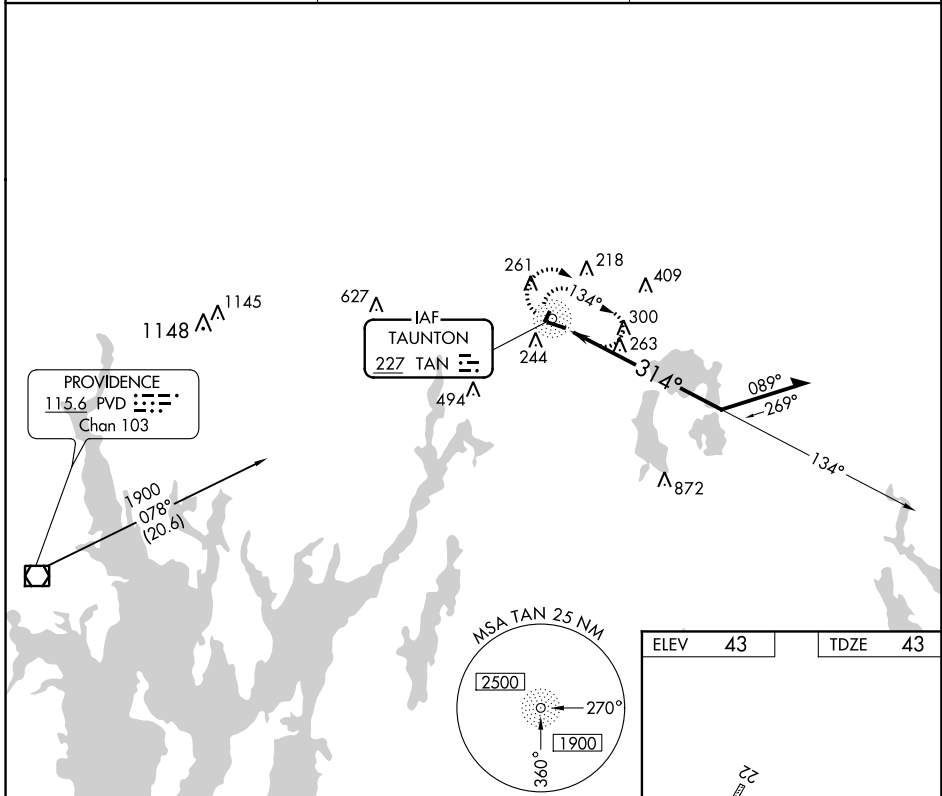
NDB TAN	APP CRS	Rwy Idg	<b>3500</b>
<b>227</b>	<b>314°</b>	TDZE	<b>43</b>
		Apt Elev	<b>43</b>

**NDB RWY 30**  
TAUNTON MUNI - KING FIELD (TAN)

**▼** When local altimeter setting not received, use New Bedford altimeter setting and increase all MDA 40 feet, S-30 and Circling Cats. C and D visibility **¼** mile. Circling NA for Rwy 4-22. Helicopter visibility reduction below 1 SM NA.

**MISSED APPROACH:** Climbing right turn to 1900 in TAN NDB holding pattern.

ASOS <b>132.675</b>	PROVIDENCE APP CON* <b>128.7 269.525</b>	UNICOM <b>122.7 (CTAF) 0</b>
------------------------	---	---------------------------------



CATEGORY	A	B	C	D
S-30	700-1	657 (700-1)	700-1¾ 657 (700-1¾)	700-2 657 (700-2)
CIRCLING	700-1	657 (700-1)	700-1¾ 657 (700-1¾)	700-2 657 (700-2)

REIL Rwy 30  
MIRL Rwy 12-30 0

WAAS CH <b>99739</b> <b>W12A</b>	APP CRS <b>124°</b>	Rwy Idg TDZE <b>41</b> Apt Elev <b>42</b>	<b>3500</b>
--	------------------------	---	-------------

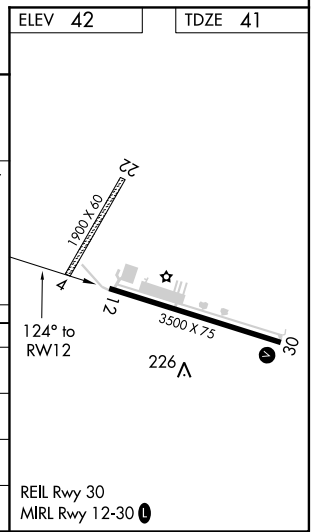
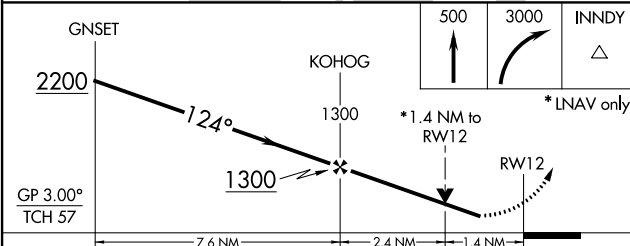
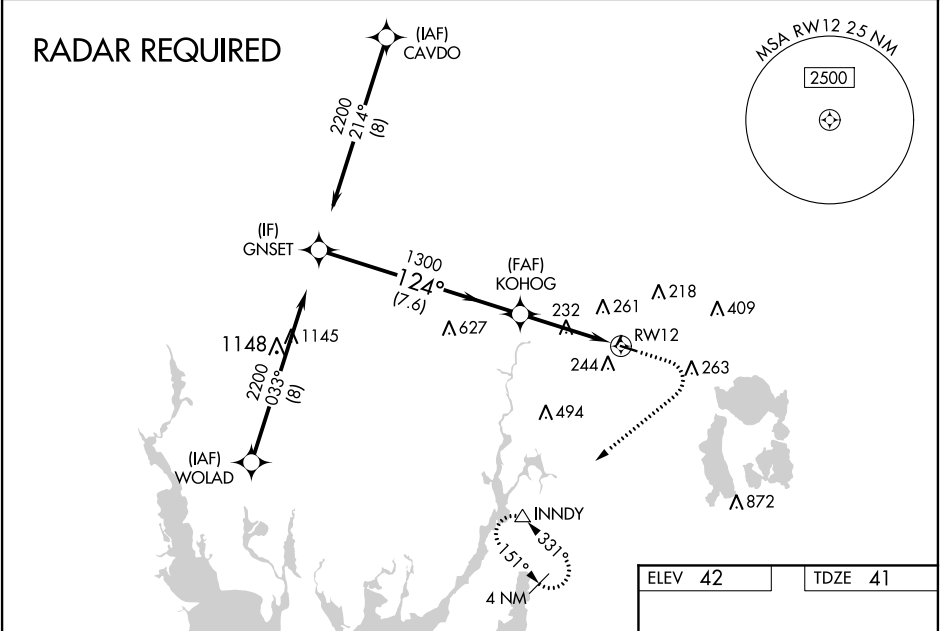
# RNAV (GPS) RWY 12

TAUNTON MUNI-KING FIELD (TAN)

**⚠** Circling NA to Rwy 4 and 22. For uncompensated Baro-VNAV systems, LNAV/VNAV NA below -3°C (27°F) or above 54°C (130°F). Baro-VNAV NA when using Bedford altimeter setting. DME/DME RNP-0.3 NA. Rwy 12 helicopter visibility reduction below ¼ SM NA. When local altimeter setting not received, use New Bedford altimeter setting and increase LPV DA to 425 feet, LNAV/VNAV DA to 448 feet and all MDA 40 feet, increase LPV and LNAV/VNAV visibilities all Cats ⅛ SM, increase LNAV Cat C/D visibility ⅓ SM, and increase Circling Cat D visibility ¼ SM.

**MISSED APPROACH:** (Do not exceed 210K until INNDY) Climb to 500 then climbing right turn to 3000 direct INNDY and hold, continue climb in hold to 3000.

ASOS <b>132.675</b>	PROVIDENCE APP CON* <b>128.7 269.525</b>	UNICOM <b>122.7 (CTAF) 0</b>
------------------------	---	---------------------------------



CATEGORY	A	B	C	D
LPV DA		391-1½	350 (400-1½)	
LNAV/VNAV DA		414-1¼	373 (400-1¼)	
LNAV MDA	540-1	499 (500-1)	540-1¾	499 (500-1¾)
<b>C</b> CIRCLING	560-1 518 (600-1)	580-1 538 (600-1)	660-1¾ 618 (700-1¾)	760-2¼ 718 (800-2¼)

NE-1, 09 NOV 2017 to 07 DEC 2017

NE-1, 09 NOV 2017 to 07 DEC 2017

WAAS CH <b>58139</b> <b>W30A</b>	APP CRS <b>304°</b>	Rwy Idg TDZE Apt Elev	<b>3500</b> <b>42</b> <b>42</b>
--	------------------------	-----------------------------	---------------------------------------

# RNAV (GPS) RWY 30

TAUNTON MUNI-KING FIELD (TAN)

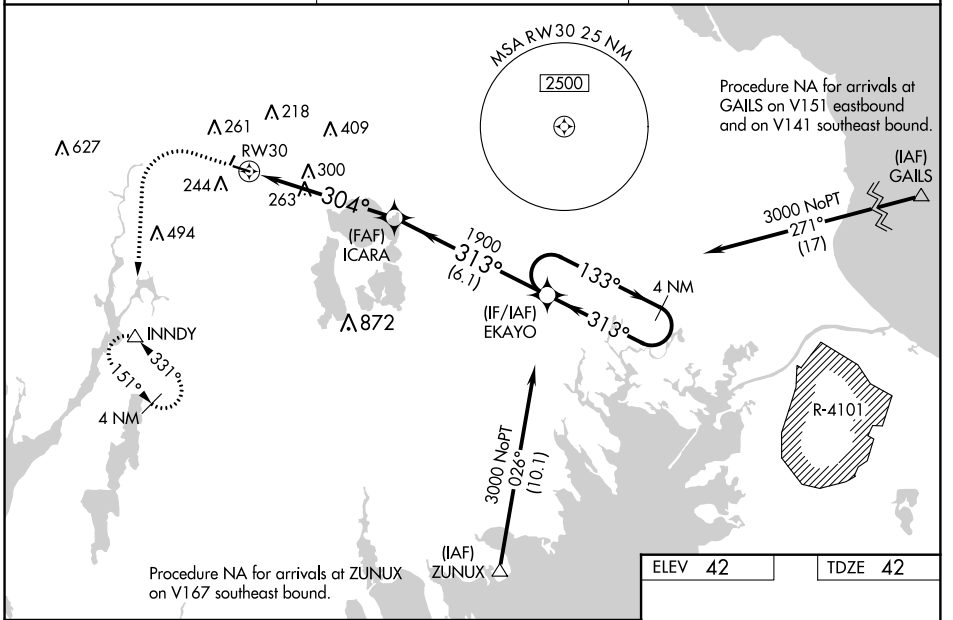
**⚠** Circling NA to Rwy 4 and 22. Baro-VNAV NA when using New Bedford altimeter setting. For uncompensated Baro-VNAV systems, LNAV/VNAV NA below -3°C (27°F) or above 54°C (130°F). DME/DME RNP-0.3 NA. When local altimeter setting not received, use New Bedford altimeter setting and increase LPV DA to 393 feet, LNAV/VNAV DA to 560 feet, and all MDAs 40 feet, increase LPV DA and LNAV/VNAV visibilities all Cats 1/8 SM, increase LNAV Cat C/D visibility 1/8 SM, and increase Circling Cat D visibility 1/4 SM. Rwy 30 helicopter visibility reduction below 1 SM NA.

**MISSED APPROACH:** (Do not exceed 210K until INNDY) Climb to 500 then climbing left turn to 3000 direct INNDY and hold, continue climb in hold to 3000.

ASOS  
**132.675**

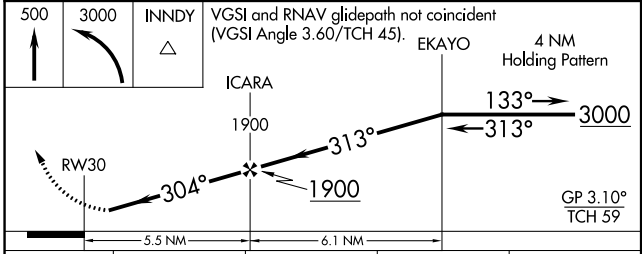
PROVIDENCE APP CON\*  
**128.7 269.525**

UNICOM  
**122.7 (CTAF) 0**



NE-1, 09 NOV 2017 to 07 DEC 2017

NE-1, 09 NOV 2017 to 07 DEC 2017



ELEV 42	TDZE 42
---------	---------

CATEGORY	A	B	C	D
LPV DA	359-1 317 (400-1)			
LNAV/VNAV DA	526-1½ 484 (500-1½)			
LNAV MDA	600-1 558 (600-1)	600-1½ 558 (600-1½)		
<b>C</b> CIRCLING	600-1 558 (600-1)	660-1¾ 618 (700-1¾)	760-2¼ 718 (800-2¼)	

