

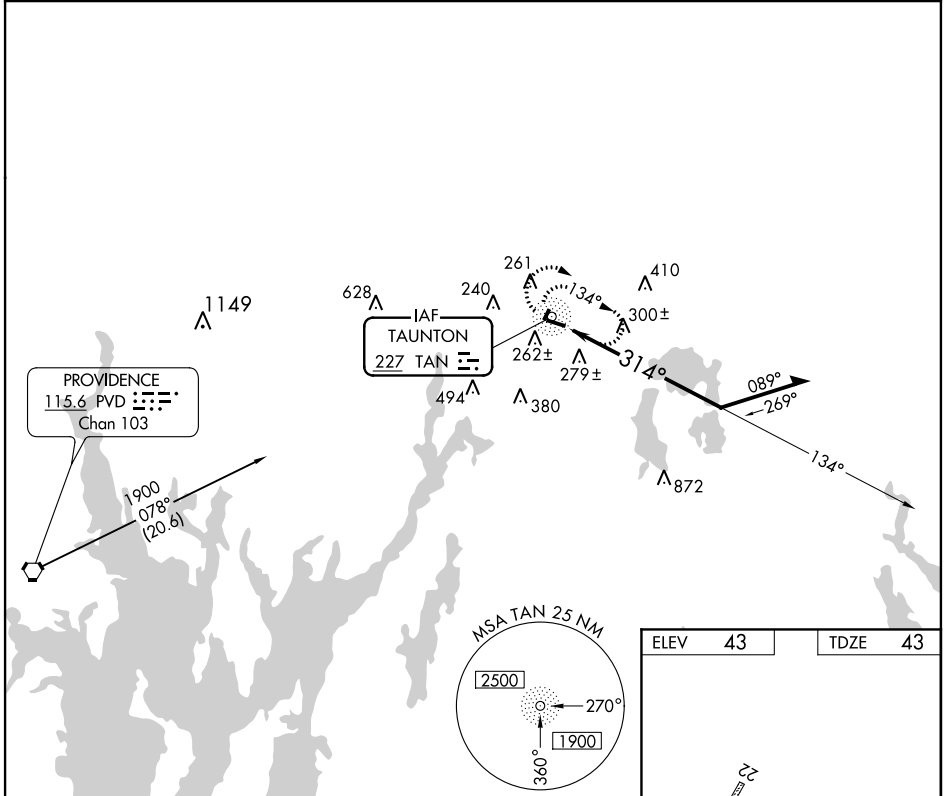
NDB TAN	APP CRS	Rwy Idg	3500
227	314°	TDZE	43
		Apt Elev	43

NDB RWY 30
TAUNTON MUNI - KING FIELD (TAN)

▼
▲ NA
When local altimeter setting not received, use New Bedford altimeter setting and increase all MDA 40 feet, S-30 and Circling Cats. C and D visibility ¼ mile. Circling NA for Rwy 4-22. Procedure NA at night. Helicopter visibility reduction below 1 SM not authorized.

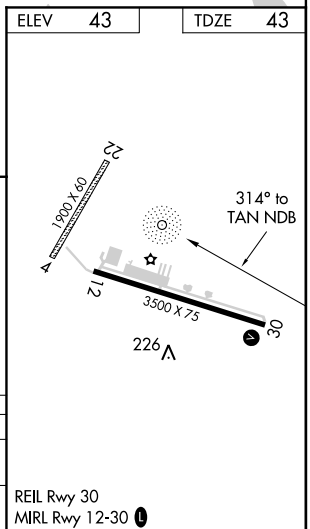
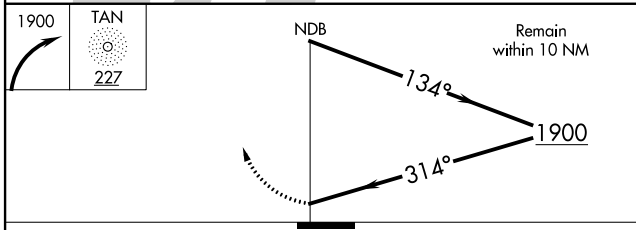
MISSED APPROACH: Climbing right turn to 1900 in TAN NDB holding pattern.

ASOS 132.675	PROVIDENCE APP CON* 128.7 269,525	UNICOM 122.7 (CTAF) 0
------------------------	---	---------------------------------



NE-1, 08 JAN 2015 to 05 FEB 2015

NE-1, 08 JAN 2015 to 05 FEB 2015



CATEGORY	A	B	C	D
S-30	700-1	657 (700-1)	700-1¾ 657 (700-1¾)	700-2 657 (700-2)
CIRCLING	700-1	657 (700-1)	700-1¾ 657 (700-1¾)	700-2 657 (700-2)

REIL Rwy 30
MIRL Rwy 12-30 **0**

APP CRS 304°	Rwy Idg 3500
	TDZE 43
	Apt Elev 43

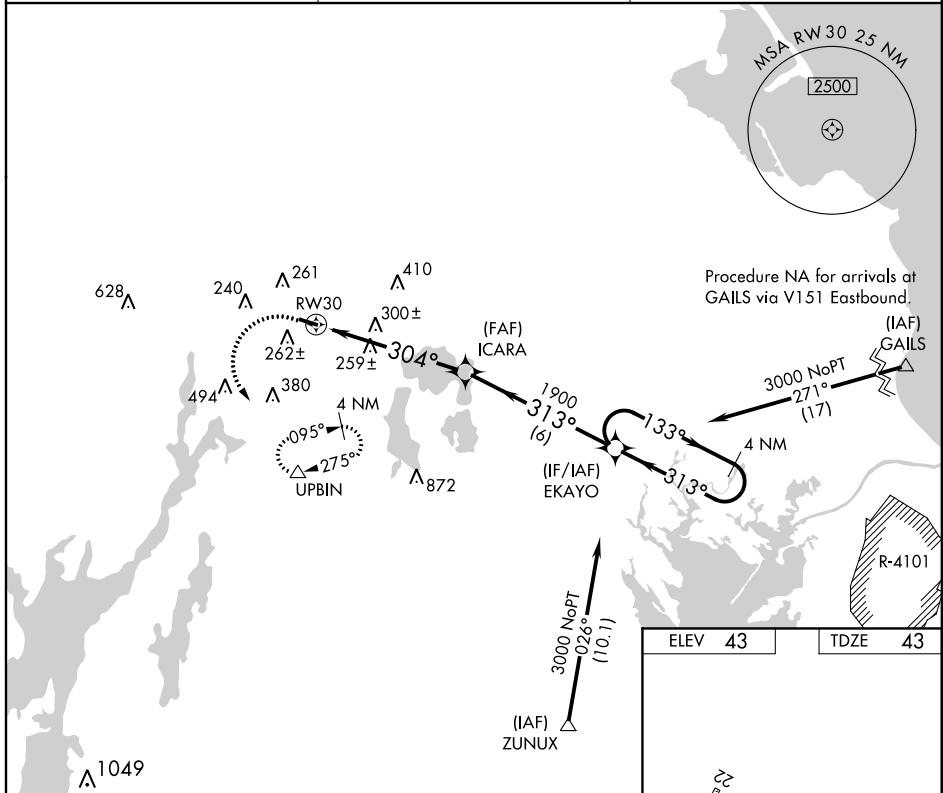
RNAV (GPS) RWY 30

TAUNTON MUNI - KING FIELD (TAN)

⚠ DME/DME RNP-0.3 NA. Helicopter visibility reduction below 1 SM not authorized. When local altimeter setting not received, use New Bedford altimeter setting and increase all MDA 40 feet; LNAV Cats. C and D and Circling Cat. C visibility ¼ mile. Circling NA to Rwy 4-22. Procedure NA at night.

⚠ MISSED APPROACH: Climbing left turn to 3000 direct UPBIN and hold, continue climb-in-hold to 3000.

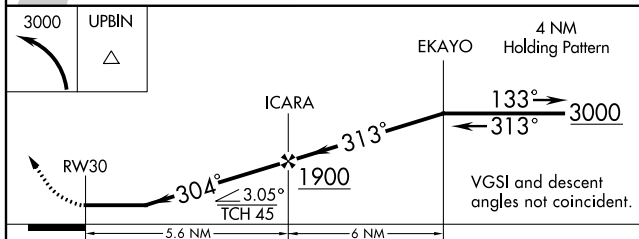
ASOS 132.675	PROVIDENCE APP CON * 128.7 269.525	UNICOM 122.7 (CTAF) ①
------------------------	--	---------------------------------



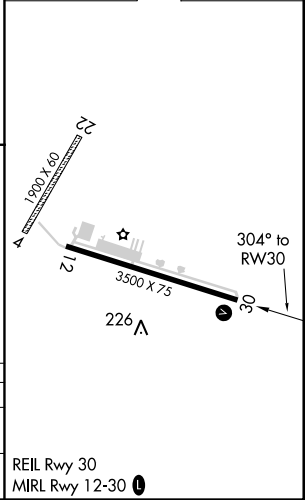
NE-1, 08 JAN 2015 to 05 FEB 2015

NE-1, 08 JAN 2015 to 05 FEB 2015

ELEV 43	TDZE 43
---------	---------



CATEGORY	A	B	C	D
LNAV MDA	600-1	557 (600-1)	600-1½ 557 (600-1½)	600-1¾ 557 (600-1¾)
CIRCLING	620-1	577 (600-1)	620-1½ 577 (600-1½)	660-2 617 (700-2)





INSTRUMENT APPROACH PROCEDURE CHARTS



IFR ALTERNATE AIRPORT MINIMUMS

Standard alternate minimums for non-precision approaches and approaches with vertical guidance [NDB, VOR, LOC, TACAN, LDA, SDF, VOR/DME, ASR, RNAV (GPS) or RNAV (RNP)] are 800-2. Standard alternate minimums for precision approaches (ILS, PAR, or GLS) are 600-2. Airports within this geographical area that require alternate minimums other than standard or alternate minimums with restrictions are listed below. NA - means alternate minimums are not authorized due to unmonitored facility, absence of weather reporting service, or lack of adequate navigation coverage. Civil pilots see FAR 91. IFR Alternate Minimums: Ceiling and Visibility Minimums not applicable to USA/USN/USAF. Pilots must review the IFR Alternate Minimums Notes for alternate airfield suitability.

NAME ALTERNATE MINIMUMS
AUBURN-LEWISTON, ME

AUBURN-LEWISTON MUNI (LEW) ILS or LOC Rwy 4^1
RNAV (GPS) Rwy 4^23
RNAV (GPS) Rwy 22^23

^1ILS, Categories A, B, 800-2; Category C, 800-2^1/4; Category D, 800-2^1/2. LOC, NA.
^2Category D, 800-2^1/2.
^3NA when local weather not available.

AUGUSTA, ME

AUGUSTA STATE (AUG) .. ILS or LOC Rwy 17^12
RNAV (GPS)-B^2
RNAV (GPS) Rwy 8^2
RNAV (GPS) Rwy 17^2
RNAV (GPS) Rwy 35^2
VOR Rwy 35^23
VOR/DME-A^2
VOR/DME Rwy 8^2
VOR/DME Rwy 17^2

^1ILS, Categories B, C, D, 700-2.
^2NA when local weather not available.
^3Category C, 800-2^1/4; Category D, 800-2^1/2.

BANGOR, ME

BANGOR INTL (BGR) ILS or LOC Rwy 33
ILS, LOC, Categories A, B, 1000-2; Categories C, D, E, 1000-3.

BAR HARBOR, ME

HANCOCK COUNTY- BAR HARBOR (BHB) ILS or LOC Rwy 22^1
RNAV (GPS) Rwy 4
RNAV (GPS) Rwy 22

NA when local weather not available.
^1ILS, Category C, D, 700-2.

NAME ALTERNATE MINIMUMS
BEDFORD, MA

LAURENCE G. HANSCOM FIELD (BED) ILS or LOC Rwy 11^123
ILS or LOC Rwy 29^134
RNAV (GPS) Z Rwy 11^3
RNAV (GPS) Rwy 23^3
RNAV (GPS) Z Rwy 29^3
VOR Rwy 23^3

^1NA when control tower closed.
^2ILS, Categories A, B, C, 800-2; Category D, 800-2^1/4; LOC, Category D, 800-2^1/4.
^3NA when local weather not available.
^4ILS, Categories A, B, 800-2; Category C, D, 800-2^1/2. LOC, Category C, D, 800-2^1/2.

BEVERLY, MA

BEVERLY MUNI (BVY) LOC Rwy 16^1
RNAV (GPS) Rwy 16
RNAV (GPS) Rwy 27
RNAV (GPS) Rwy 34

NA when local weather not available.
^1NA when control tower closed.

BLOCK ISLAND, RI

BLOCK ISLAND STATE (BID) RNAV (GPS) Rwy 28
VOR Rwy 28

NA when local weather not available.

08 JAN 2015 to 05 FEB 2015

08 JAN 2015 to 05 FEB 2015



**ALTERNATE MINS**

15008

M2



NAME ALTERNATE MINIMUMS

BOSTON, MA

GENERAL EDWARD LAWRENCE LOGAN
 INTL (BOS).....**ILS or LOC Rwy 4R¹**
 ILS or LOC/DME Rwy 15R¹
 ILS or LOC Rwy 22L¹
 ILS or LOC Rwy 27¹
 ILS or LOC Rwy 33L¹
 RNAV (GPS) Rwy 4R²
 RNAV (GPS) Rwy 15R²
 RNAV (GPS) Rwy 22L²
 RNAV (GPS) Rwy 27²
 RNAV (GPS) Rwy 32⁴
 RNAV (GPS) Rwy 33L²
 VOR/DME-A²
 VOR/DME Rwy 15R³
 VOR/DME Rwy 27²
 VOR/DME Rwy 33L²

¹ILS, Categories A, B, 1000-2; Categories C, D, 700-2. LOC, Categories A, B, 1000-2.²Categories A, B, 1000-2.³Categories A, B, 1000-2; Category C, 800-2¼; Category D, 800-2½.⁴ILS Categories A, B, 1000-2, Categories C, D, 800-2½.**BRIDGEPORT, CT**

IGOR I. SIKORSKY
 MEMORIAL (BDR)**ILS Rwy 6¹²**
 VOR Rwy 6³
 VOR Rwy 24³
 VOR Rwy 29³

¹NA when control tower closed.²ILS, Categories B, C, 700-2; Category D, 900-2½. LOC, Category D, 900-2½.³Category D, 900-2½.**BURLINGTON, VT**

BURLINGTON
 INTL (BTV)**ILS or LOC/DME Rwy 15¹²³**
 ILS or LOC/DME Rwy 33¹²⁴
 RNAV (GPS) Y Rwy 33⁵
 RNAV (GPS) Z Rwy 33⁶
 VOR Rwy 1²

¹ILS, Category D, 700-2.²NA when control tower closed.³NA when local weather not available.⁴LOC, Category E, 1000-3.⁵Category E, 1000-3.⁶Categories A, B, 1700-2, Categories C, D, E, 1700-3.**CARIBOU, ME**

CARIBOU MUNI (CAR) **RNAV (GPS) Rwy 19**
 NA when local weather not available.

NAME ALTERNATE MINIMUMS

CHATHAM, MA

CHATHAM MUNI (CQX) **RNAV (GPS)-B**
 NA when local weather not available.

CHESTER, CT

CHESTER (SNC) **RNAV (GPS) Rwy 17**
 RNAV (GPS) Rwy 35
 VOR-A
 NA when local weather not available.

CONCORD, NH

CONCORD
 MUNI (CON) **RNAV (GPS) Rwy 12¹**
 RNAV (GPS) Rwy 17²
 RNAV (GPS) Rwy 35²
 VOR-A¹

¹Categories A, B, 900-2; Category C, 900-2½; Category D, 900-2¾.²Category D, 900-2¾.**DANBURY, CT**

DANBURY MUNI (DXR) **GPS Rwy 8**
 LOC Rwy 8¹
 VOR or GPS-A

Categories A, B, 1000-2; Category C, 1000-2¾; Category D, 1000-3.

¹NA when local weather not available.**FALMOUTH, MA**

CAPE COD COAST GUARD
 AIR STATION (FMH) **RNAV (GPS) Rwy 5**
 RNAV (GPS) Rwy 14
 RNAV (GPS) Rwy 23
 RNAV (GPS) Rwy 32
 Category C, 800-2¼; Category D, 800-2½.

FITCHBURG, MA

FITCHBURG MUNI (FIT) **NDB Rwy 20¹**
 RNAV (GPS) Rwy 14¹
 RNAV (GPS) Rwy 20²
 RNAV (GPS) Rwy 32²
 NDB-A³⁴

¹Categories A, B, 1000-2; Category C, 1000-3.²Category B, 1000-2; Category C, 1000-3.³Category A, 900-2; Category B, 1000-2; Category C, 1000-3.⁴NA when local weather not available.**FRENCHVILLE, ME**

NORTHERN AROOSTOOK
 RGNL (FVE) **RNAV (GPS) Rwy 14**
 RNAV (GPS) Rwy 32
 NA when local weather not available.

08 JAN 2015 to 05 FEB 2015

08 JAN 2015 to 05 FEB 2015

**ALTERNATE MINS**

15008

M2

NE-1





ALTERNATE MINS

15008

M3



NAME ALTERNATE MINIMUMS

FRYEBURG, ME

EASTERN SLOPES

RGNL (IZG) **NDB-B¹**
RNAV (GPS) Rwy 32²

NA when local weather not available.

¹Categories A, B, 1400-2; Category C, 1400-3.

²Category A, 900-2; Category B, 1000-2;

Category C, 1200-3.

GROTON (NEW LONDON), CT

GROTON-NEW

LONDON (GON) **ILS or LOC Rwy 5**

ILS, Categories B, C, D, 700-2.

HARTFORD, CT

HARTFORD-BRAINARD (HFD) **LDA Rwy 2¹³**

RNAV (GPS) Rwy 2¹

VOR-A²

¹Category C, 900-2¾, Category D, 1000-3.

²Categories A, B, 1200-2; Categories C, D, 1200-3.

³NA when control tower closed.

HIGHGATE, VT

FRANKLIN COUNTY

STATE (FSO) **RNAV (GPS) Rwy 1**

RNAV (GPS) Rwy 19

NA when local weather not available.

HOULTON, ME

HOULTON INTL (HUL) **RNAV (GPS)-A**

RNAV (GPS) Rwy 5

VOR/DME Rwy 5

NA when local weather not available.

HYANNIS, MA

BARNSTABLE MUNI-BOARDMAN/

POLANDO FIELD (HYA) **ILS or LOC Rwy 15¹**

ILS or LOC Rwy 24¹

RNAV (GPS) Rwy 6

RNAV (GPS) Rwy 15

RNAV (GPS) Rwy 24

RNAV (GPS) Rwy 33

VOR Rwy 6²

NA when local weather not available.

¹NA when control tower closed.

²Categories A, B, 900-2; Category C, 900-2½;

Category D, 900-2¾.

JAFFREY, NH

JAFFREY AIRPORT-

SILVER RANCH (AFN) **RNAV (GPS)-B**

RNAV (GPS)-C

VOR-A¹

NA when local weather not available.

¹Categories A, B, 900-2.

KEENE, NH

DILLANT-

HOPKINS (EEN) **RNAV (GPS) Rwy 2¹**
VOR Rwy 2²

NA when local weather not available.

¹Category A, 900-2; Category B, 1000-2;

Category C, 1000-3; Category D, 1200-3.

²Categories A, B, 1700-2; Category C, D, 1700-3.

LACONIA, NH

LACONIA MUNI (LCI) **ILS or LOC Rwy 8¹**

NDB Rwy 8²

RNAV (GPS) Rwy 8³

RNAV (GPS) Rwy 26³

NA when local weather not available.

¹ILS, LOC, Category A, 900-2; Category B, 1100-2; Category C, 1100-3; Category D, 1700-3.

²Category A, 1000-2; Category B, 1100-2;

Category C, 1100-3; Category D, 1700-3.

³Category A, 900-2; Category B, 1000-2;

Category C, 1100-3; Category D, 1700-3.

LAWRENCE, MA

LAWRENCE

MUNI (LWM) **ILS or LOC Y Rwy 5**

ILS or LOC Z Rwy 5

NDB Rwy 5¹

NA when control tower closed.

¹Categories C, D, 800-2½.

LEBANON, NH

LEBANON

MUNI (LEB) **ILS or LOC Rwy 18¹²**

RNAV (GPS) Rwy 7³

RNAV (GPS) Rwy 18³

RNAV (GPS) Rwy 25³

RNAV (GPS) Rwy 36⁴

VOR/DME Rwy 7⁵

VOR Rwy 25⁶

¹NA when control tower closed.

²ILS, LOC, Category A, 1100-2; Category B, 1200-2; Categories C, D, 1300-3.

³Category A, 1100-2; Category B, 1200-2; Categories C, D, 1200-3.

⁴Categories A, B, 1200-2; Categories C, D, 1200-3.

⁵Category A, 1100-2; Category B, 1200-2; Categories C, D, 1300-3.

⁶Categories A, B, 1100-2; Categories C, D, 1100-3.

LYNDONVILLE, VT

CALEDONIA

COUNTY (CDA) **RNAV (GPS) Rwy 2**

NA when local weather not available.

Categories A, B, 900-2.

08 JAN 2015 to 05 FEB 2015

08 JAN 2015 to 05 FEB 2015



ALTERNATE MINS

15008

M3

NE-1





ALTERNATE MINS

15008

M4



NAME	ALTERNATE MINIMUMS
MANCHESTER, NH	
MANCHESTER	
(MHT)	ILS or LOC/DME Rwy 17 ¹²⁴
	ILS or LOC Rwy 6 ¹²⁴
	ILS or LOC Rwy 35 ¹²⁴
	RNAV (GPS) Rwy 6 ¹
	RNAV (GPS) Y Rwy 17 ¹⁵
	RNAV (GPS) Y Rwy 35 ¹⁵
	VOR/DME Rwy 17 ³

- ¹NA when local weather not available.
- ²ILS, Categories A, B, 700-2, Category C, 800-2, Category D, 900-2 $\frac{3}{4}$; LOC, Category D, 900-2 $\frac{3}{4}$.
- ³Category C, 800-2 $\frac{1}{4}$; Category D, 800-2 $\frac{1}{2}$.
- ⁴NA when control tower closed.
- ⁵Category D, 900-2 $\frac{3}{4}$.

MARSHFIELD, MA	
MARSHFIELD MUNI-GEORGE	
HARLOW FIELD (GHG)	RNAV (GPS) Rwy 6
	RNAV (GPS) Rwy 24

- NA when local weather not available.
- Category B, 900-2.

MERIDEN, CT	
MERIDEN MARHAM	
MUNI (MMK)	RNAV (GPS) Rwy 36
NA when local weather not available.	

MILLINOCKET, ME	
MILLINOCKET	
MUNI (MLT).....	RNAV (GPS) Rwy 11
	RNAV (GPS) Rwy 29
	VOR Rwy 29

- NA when local weather not available.
- Category D, 800-2 $\frac{1}{4}$.

MORRISVILLE, VT	
MORRISVILLE-STOWE	
STATE (MVL)	RNAV (GPS) Y Rwy 19 ¹
	RNAV (GPS) Z Rwy 19 ²

- NA when local weather not available.
- ¹Categories A, B, 1400-2.
- ²Category A, 1100-2; Category B, 1200-2.

NAME	ALTERNATE MINIMUMS
NANTUCKET, MA	
NANTUCKET	
MEMORIAL (ACK)	ILS or LOC Rwy 6 ¹²
	ILS or LOC Rwy 24 ¹²
	NDB Rwy 24 ¹
	RNAV (GPS) Rwy 6 ²
	RNAV (GPS) Rwy 15 ²
	RNAV (GPS) Rwy 24 ²
	RNAV (GPS) Rwy 33 ²³
	VOR Rwy 24 ²

- ¹NA when control tower closed.
- ²NA when local weather not available.
- ³Category D, 1000-3.

NASHUA, NH	
BOIRE FIELD (ASH)	ILS or LOC Rwy 14 ¹²
	NDB Rwy 14 ³
	RNAV (GPS) Rwy 14
	RNAV (GPS) Rwy 32
	VOR-A ⁴
	VOR Rwy 32 ⁵

- NA when local weather not available.
- ¹NA when control tower closed.
- ²ILS, 700-2.
- ³Category D, 800-2 $\frac{1}{4}$.
- ⁴Category C, 800-2 $\frac{1}{4}$; Category D, 800-2 $\frac{1}{2}$.
- ⁵Category D, 800-2 $\frac{1}{2}$.

NEW BEDFORD, MA	
NEW BEDFORD	
RGNL (EWB)	ILS or LOC Rwy 5 ¹³
	LOC BC Rwy 23 ²
	RNAV (GPS) Rwy 5 ²
	RNAV (GPS) Rwy 23 ²
	RNAV (GPS) Rwy 14
	RNAV (GPS) Rwy 32 ⁴

- NA when local weather not available.
- ¹NA when control tower closed.
- ²Category D, 900-2 $\frac{3}{4}$.
- ³ILS, Categories A, B, C, 700-2; Category D, 900-2 $\frac{3}{4}$; LOC, Category D, 900-2 $\frac{3}{4}$.
- ⁴Categories A, B, 900-2; Categories C, D, 900-2 $\frac{1}{2}$.

NEW HAVEN, CT	
TWEED-NEW	
HAVEN (HVN)	ILS or LOC Rwy 2 ¹
	RNAV (GPS) Rwy 2 ²
	VOR-A ²
	VOR Rwy 2 ²

- NA when control tower closed.
- NA when local weather not available.
- ¹ILS, Categories A, B, C, 800-2; Category D, 800-2 $\frac{1}{4}$. LOC, Category D, 800-2 $\frac{1}{4}$.
- ²Category D, 800-2 $\frac{1}{4}$.

08 JAN 2015 to 05 FEB 2015

08 JAN 2015 to 05 FEB 2015



ALTERNATE MINS

15008

M4

NE-1





ALTERNATE MINS

15008

M5



NAME ALTERNATE MINIMUMS

NEWPORT, RI
NEWPORT
STATE (UUU)..... RNAV (GPS) Rwy 16
VOR/DME Rwy 16

NA when local weather not available.

NEWPORT, VT

NEWPORT
STATE (EFK) RNAV (GPS) Rwy 36

NA when local weather not available.

NORTH KINGSTOWN, RI

QUONSET
STATE (OQU) ILS or LOC Rwy 16¹²
RNAV (GPS) Rwy 16³

RNAV (GPS) Rwy 34³
VOR-A¹

VOR Rwy 34¹⁴

¹NA when control tower closed.

²ILS, Categories A, B, C, 800-2; Category D,
800-2½. LOC, Category D, 800-2½.

³NA when local weather not available.

⁴Category D, 800-2½.

NORWOOD, MA

NORWOOD
MEMORIAL (OWD) LOC Rwy 35

NA when control tower closed.

ORANGE, MA

ORANGE MUNI (ORE)..... RNAV (GPS) Rwy 32¹
VOR-A¹²

¹NA when local weather not available.

²Categories A, B, 1400-2; Categories C, D,
1400-3.

OXFORD, CT

WATERBURY-
OXFORD (OXO)..... RNAV (GPS) Rwy 18
RNAV (GPS) Rwy 36

NA when local weather not available.

PAWTUCKET, RI

NORTH CENTRAL
STATE (SFZ)..... RNAV (GPS) Rwy 5
RNAV (GPS) Rwy 23

VOR-A
VOR-B

NA when local weather not available.

NAME ALTERNATE MINIMUMS

PITTSFIELD, MA
PITTSFIELD
MUNI (PSF) RNAV (GPS) Rwy 8
RNAV (GPS) Rwy 26

NA when local weather not available.

Category A, 900-2; Category B, 1000-2;
Category C, 1300-3; Category D, 1500-3.

PLYMOUTH, MA

PLYMOUTH
MUNI (PYM)..... ILS or LOC/DME Rwy 6
RNAV (GPS) Rwy 6

RNAV (GPS) Rwy 24

NA when local weather not available.

PORTLAND, ME

PORTLAND INTL
JETPORT (PWM)..... ILS or LOC Rwy 11¹³
ILS or LOC Rwy 29¹³

RNAV (GPS) Rwy 11⁴
RNAV (GPS) Rwy 18²⁴

RNAV (GPS) Rwy 29⁴
RNAV (GPS) Rwy 36²⁴

¹NA when approach control closed.

²NA when local weather not available.

³ILS, Categories A, B, C, 700-2; Category D,
800-2½. LOC, Category D, 800-2½.

⁴Category D, 800-2½.

PORTSMOUTH, NH

PORTSMOUTH INTL AT
PEASE (PSM)..... ILS or LOC Rwy 16¹
ILS or LOC Rwy 34¹

RNAV (GPS) Rwy 16²
RNAV (GPS) Rwy 34²

¹ILS, Category E, 700-2½. LOC, Category E,
800-2½.

²Category E, 800-2½.

PRESQUE ISLE, ME

NORTHERN MAINE REGIONAL AIRPORT AT
PRESQUE ISLE (PQI) ILS or LOC Rwy 1¹²

RNAV (GPS) Rwy 1¹
RNAV (GPS) Rwy 19¹³

RNAV (GPS) Rwy 28¹
VOR Rwy 19⁴

¹NA when local weather not available.

²Categories B, C, D, 700-2.

³Category D, 800-2½.

⁴Category C, 800-2½; Category D, 800-2½.

08 JAN 2015 to 05 FEB 2015

08 JAN 2015 to 05 FEB 2015



ALTERNATE MINS

15008

M5

NE-1





ALTERNATE MINS

15008

M6



NAME ALTERNATE MINIMUMS

PROVIDENCE, RI

THEODORE FRANCIS GREEN
STATE (PVD) ILS or LOC Rwy 5¹
ILS or LOC Rwy 23¹
ILS or LOC/DME Rwy 34¹
VOR Rwy 5²

¹NA when control tower closed.

²Category D, 800-2¼.

PROVINCETOWN, MA

PROVINCETOWN
MUNI (PVC) NDB Rwy 25
RNAV (GPS) RWY 7
RNAV (GPS) RWY 25

NA when local weather not available.

ROCHESTER, NH

SKYHAVEN (DAW) RNAV (GPS) Rwy 33
VOR/DME-A

NA when local weather not available.

ROCKLAND, ME

KNOX COUNTY
RGNL (RKD) RNAV (GPS) Rwy 3
RNAV (GPS) Rwy 31

NA when local weather not available.

RUTLAND, VT

RUTLAND-SOUTHERN VERMONT
RGNL (RUT) ILS or LOC/DME Y Rwy 19²
ILS or LOC/DME Z Rwy 19⁴
RNAV (GPS) Rwy 1¹
RNAV (GPS) Y Rwy 19³
RNAV (GPS) Z Rwy 19⁴
VOR/DME Rwy 19³

NA when local weather not available.

¹Categories A, B, 2400-2; Category C, 2400-3.

²Categories A, B, 1500-2; Category C, 1500-3.

³Categories A, B, 1800-2; Category C, 1800-3.

⁴Categories A, B, 1200-2; Category C, 1300-3.

SANFORD, ME

SANFORD SEACOAST
RGNL (SFM) RNAV (GPS) Rwy 7
RNAV (GPS) Rwy 25
RNAV (GPS) Rwy 32
VOR Rwy 7¹
VOR Rwy 25

NA when local weather not available.

¹Categories A, B, 1000-2; Categories C, D 1000-3.

SPRINGFIELD, VT

HARTNESS STATE
(SPRINGFIELD) (VSF) RNAV (GPS) Rwy 5
Category A, 1000-2; Category B, 1200-2;
Category C, 1200-3; Category D, 1900-3.

NAME ALTERNATE MINIMUMS

TAUNTON, MA

TAUNTON MUNI-
KING FIELD (TAN) RNAV (GPS) Rwy 30
NA when local weather not available.

VINEYARD HAVEN, MA

MARTHAS
VINEYARD (MVY) ILS or LOC Rwy 24¹
RNAV (GPS) Rwy 6
RNAV (GPS) Rwy 15²
RNAV (GPS) Rwy 24²
RNAV (GPS) Rwy 33
VOR Rwy 6
VOR Rwy 24

NA when local weather not available.

¹NA when control tower closed.

²Category D, 800-2¼.

WATERVILLE, ME

WATERVILLE ROBERT
LAFLEUR (WVL) ILS or LOC/DME Rwy 5
RNAV (GPS) Rwy 5
RNAV (GPS) Rwy 23

NA when local weather not available.

WESTFIELD/SPRINGFIELD, MA

WESTFIELD-
BARNES RGNL (BAF) ILS or LOC Rwy 20¹²⁷
RNAV (GPS) Rwy 2³
RNAV (GPS) Rwy 20²⁶
VOR or TACAN Rwy 2⁴
VOR Rwy 20⁵

¹Categories, A, B, 1000-2; Category C, 1000-3;
Categories D, E, 1400-3.

²NA when local weather not available.

³Categories A, B, 1100-2; Categories C, D,
1100-3; Category E, 1300-3.

⁴Categories A, B, 900-2; Category C, 900-2¾;
Categories D, E, 1300-3.

⁵Categories A, B, 900-2; Category C, 900-2¾;
Category D, 900-3.

⁶Categories A, B, 900-2; Category C, 900-2¾;
Category D, 900-3; Category E, 1400-3.

⁷NA when tower closed.

WHITEFIELD, NH

MOUNT WASHINGTON
RGNL (HIE) RNAV (GPS) Y Rwy 10¹²
RNAV (GPS) Z Rwy 10²

¹Categories A, B, 900-2; Category C, 900-2¾.

²NA when local weather not available.

08 JAN 2015 to 05 FEB 2015

08 JAN 2015 to 05 FEB 2015



ALTERNATE MINS

15008

M6

NE-1





ALTERNATE MINS

15008

M7



NAME	ALTERNATE MINIMUMS	NAME	ALTERNATE MINIMUMS
WILLIMANTIC, CT			
WINDHAM (IJD)	RNAV (GPS) Rwy 9²		
	RNAV (GPS) Rwy 27²		
	VOR-A¹		

¹Category C, 800-2¼.
²NA when local weather not available.

WINDSOR LOCKS, CT

BRADLEY INTL (BDL).....	ILS or LOC Rwy 6¹
	ILS or LOC Rwy 24²
	ILS or LOC Rwy 33²
	RNAV (GPS) Y Rwy 6²
	RNAV (GPS) Rwy 15³
	RNAV (GPS) Y Rwy 24²
	RNAV (GPS) Rwy 33²

¹Categories A, B, 1000-2; Category C, 1000-2¾;
 Category D, 1000-3.
²Category D, 800-2½.
³Categories A, B, 1000-2; Category C,
 1000-2¾.
⁴Categories A, B, C, 1100-4.

WISCASSET, ME

WISCASSET (IWI).....	RNAV (GPS) Rwy 7
	RNAV (GPS) Rwy 25

NA when local weather not available.

WORCESTER, MA

WORCESTER	
RGNL (ORH)	ILS or LOC Rwy 11¹²
	ILS or LOC Rwy 29¹²
	RNAV (GPS) Rwy 11³
	RNAV (GPS) Rwy 29³
	RNAV (GPS) Rwy 33³
	VOR/DME Rwy 33³

NA when local weather not available.
¹NA when control tower closed.
²ILS, Category B, 700-2; Category C, 800-2;
 Category D, 1000-3. LOC, Category D,
 1000-3.
³Category D, 1000-3.

08 JAN 2015 to 05 FEB 2015

08 JAN 2015 to 05 FEB 2015



ALTERNATE MINS

15008

M7

NE-1



TAKEOFF MINIMUMS, (OBSTACLE) DEPARTURE PROCEDURES, AND DIVERSE VECTOR AREA (RADAR VECTORS)

INSTRUMENT APPROACH PROCEDURE CHARTS

14317

IFR TAKEOFF MINIMUMS AND (OBSTACLE) DEPARTURE PROCEDURES

Civil Airports and Selected Military Airports

ALL USERS: Airports that have Departure Procedures (DPs) designed specifically to assist pilots in avoiding obstacles during the climb to the minimum enroute altitude, and/or airports that have civil IFR takeoff minimums other than standard, are listed below. Takeoff Minimums and Departure Procedures apply to all runways unless otherwise specified. Altitudes, unless otherwise indicated, are minimum altitudes in MSL.

DPs specifically designed for obstacle avoidance are referred to as Obstacle Departure Procedures (ODPs) and are textually described below, or published separately as a graphic procedure. If the ODP is published as a graphic procedure, its name will be listed below, and it can be found in either this volume (civil), or the applicable military volume, as appropriate. Users will recognize graphic obstacle DPs by the term "(OBSTACLE)" included in the procedure title; e.g., TETON TWO (OBSTACLE). If not specifically assigned an ODP, SID, or radar vector as part of an IFR clearance, an ODP may be required to be flown for obstacle clearance, even though not specifically stated in the IFR clearance. When doing so in this manner, ATC should be informed when the ODP being used contains a specified route to be flown, restrictions before turning, and/or altitude restrictions.

Some ODPs, which are established solely for obstacle avoidance, require a climb in visual conditions to cross the airport, a fix, or a NAVAID in a specified direction, at or above a specified altitude. These procedures are called Visual Climb Over Airport (VCOA). To ensure safe and efficient operations, the pilot must verbally request approval from ATC to fly the VCOA when requesting their IFR clearance.

At some locations where an ODP has been established, a diverse vector area (DVA) may be created to allow radar vectors to be used in lieu of an ODP. DVA information will state that headings will be as assigned by ATC and climb gradients, when applicable, will be published immediately following the specified departure procedure.

Graphic DPs designed by ATC to standardize traffic flows, ensure aircraft separation and enhance capacity are referred to as "Standard Instrument Departures (SIDs)". SIDs also provide obstacle clearance and are published under the appropriate airport section. ATC clearance must be received prior to flying a SID.

CIVIL USERS NOTE: Title 14 Code of Federal Regulations Part 91 prescribes standard takeoff rules and establishes takeoff minimums for certain operators as follows: (1) Aircraft having two engines or less - one statute mile. (2) Aircraft having more than two engines - one-half statute mile. These standard minima apply in the absence of any different minima listed below.

MILITARY USERS NOTE: Civil (nonstandard) takeoff minima are published below. For military takeoff minima, refer to appropriate service directives.

NAME	TAKEOFF MINIMUMS
------	------------------

AUBURN-LEWISTON, ME

AUBURN-LEWISTON MUNI (LEW)

TAKEOFF MINIMUMS AND (OBSTACLE)

DEPARTURE PROCEDURES

AMDT 5 05076 (FAA)

TAKEOFF MINIMUMS: **Rwy 17**, 500-2¼ or std. with a min. climb of 266' per NM to 900. **Rwy 22**, std. with a min. climb of 312' per NM to 1500, or 1100-2½ for climb in visual conditions.

DEPARTURE PROCEDURE: **Rwy 17**, climb via heading 165° to 900 before turning northeast. **Rwy 22**, climb to 1500 direct LE LOM. Cross LE LOM at 1500 or above before turning southwest. For climb in visual conditions cross Auburn/Lewiston Muni at or above 1300.

NOTE: **Rwy 4**, multiple trees beginning 297' from DER, 78' right of centerline, up to 90' AGL/386' MSL. Multiple trees beginning 331' from DER, 277' left of centerline, up to 86' AGL/323' MSL. Abandoned aircraft 73' from DER, 478' right of centerline, 19' AGL/289' MSL. Abandoned aircraft 36' from DER, 451' right of centerline, 18' AGL/288' MSL. Pole 1487' from DER, 348' right of centerline, 51' AGL/314' MSL. Pole 101' from DER, 387' left of centerline, 37' AGL/277' MSL. Fence 132' from DER, 306' right of centerline, 11' AGL/289' MSL. **Rwy 17**, tree 1209' from DER, 390' right of centerline, 72' AGL/364' MSL. Tree 909' from DER, 336' right of centerline, 51' AGL/350' MSL. Tree 1819' from DER, 169' left of centerline, 92' AGL/371' MSL. Tree 1053' from DER, 252' left of centerline, 60' AGL/336' MSL. Tree 575' from DER, 175' left of centerline, 39' AGL/322' MSL.

14317

NAME	TAKEOFF MINIMUMS
------	------------------

AUBURN-LEWISTON, ME (CON'T)

AUBURN-LEWISTON MUNI (CONT.)

Tree 881' from DER, 110' right of centerline, 35' AGL/327' MSL. Terrain 159' from DER, 487' right of centerline, 0' AGL/302' MSL. Tree 1.9 NM from DER, 247' left of centerline, 129' AGL/576' MSL. Terrain 276' from DER, 302' right of centerline, 0' AGL/299' MSL. Road 531' from DER, 156' left of centerline, 0' AGL/305' MSL. Terrain 533' from DER, 463' right of centerline, 0' AGL/302' MSL. Terrain 18' from DER, 140' right of centerline, 0' AGL/289' MSL. Tower 1.7 NM from DER, 4211' left of centerline, 193' AGL/752' MSL. **Rwy 22**, tree 4322' from DER, 1403' right of centerline, 87' AGL/439' MSL. Tree 4970' from DER, 616' left of centerline, 62' AGL/414' MSL. Tree 5547' from DER, 633' right of centerline, 86' AGL/428' MSL. Tree 5242' from DER, 1108' right of centerline, 51' AGL/419' MSL. Tree 3040' from DER, 993' right of centerline, 74' AGL/363' MSL. Ground 4784' from DER, 88' right of centerline, 0' AGL/404' MSL. Ground 3902' from DER, 811' right of centerline, 0' AGL/375' MSL. Tree 3189' from DER, 500' right of centerline, 73' AGL/352' MSL. **Rwy 35**, tree 1877' from DER, 357' left of centerline, 104' AGL/344' MSL. Tree 870' from DER, 380' right of centerline, 72' AGL/312' MSL. Tree 1146' from DER, 378' left of centerline, 77' AGL/317' MSL. Tree 1520' from DER, 170' right of centerline, 62' AGL/302' MSL.

08 JAN 2015 to 05 FEB 2015

TAKEOFF MINIMUMS, (OBSTACLE) DEPARTURE PROCEDURES, AND DIVERSE VECTOR AREA (RADAR VECTORS)

TAKEOFF MINIMUMS, (OBSTACLE) DEPARTURE PROCEDURES, AND DIVERSE VECTOR AREA (RADAR VECTORS)

14317

AUGUSTA, ME

AUGUSTA STATE (AUG)

TAKEOFF MINIMUMS AND (OBSTACLE)
DEPARTURE PROCEDURES
AMDT 3 11181 (FAA)

TAKEOFF MINIMUMS: **Rwy 8**, 300-1 or std. w/min. climb of 263' per NM to 600. **Rwy 17**, 300-1 or std. w/min. climb of 283' per NM to 600. **Rwy 26**, 400-2 or std. w/min. climb of 313' per NM to 800.
DEPARTURE PROCEDURE: **Rwy 26**, climb heading 260° to 800 before turning right. **Rwy 35**, climb heading 351° to 1000 before turning left.

NOTE: **Rwy 8**, trees beginning 197' from DER, 91' right of centerline, up to 70' AGL/443' MSL. Fence 200' from DER, 126' right of centerline, 8' AGL/358' MSL. Pole 921' from DER, 334' right of centerline, 52' AGL/422' MSL. Trees beginning 956' from DER, 588' left of centerline, up to 70' AGL/420' MSL. Tower 5173' from DER, 1864' left of centerline, 156' AGL/527' MSL. **Rwy 17**, trees beginning 102' from DER, 289' right of centerline, up to 100' AGL/529' MSL. Poles beginning 107' from DER, 355' left of centerline, up to 45' AGL/385' MSL. Vehicle on road 229' from DER, 250' left of centerline, 15' AGL/355' MSL. Trees beginning 318' from DER, 107' left of centerline, up to 80' AGL/413' MSL. **Rwy 26**, trees beginning 157' from DER, 13' left of centerline, up to 70' AGL/419' MSL. Tree 270' from DER, 90' right of centerline, 90' AGL/419' MSL. Trees and towers beginning 5268' from DER, 769' right of centerline, up to 186' AGL/666' MSL.

BANGOR, ME

BANGOR INTL (BGR)

TAKEOFF MINIMUMS AND (OBSTACLE)
DEPARTURE PROCEDURES
AMDT 2 09239 (FAA)

NOTE: **Rwy 15**, trees beginning 1694' from DER, 629' left of centerline, up to 79' AGL/278' MSL.

BAR HARBOR, ME

HANCOCK COUNTY-BAR HARBOR (BHB)

TAKEOFF MINIMUMS AND (OBSTACLE)
DEPARTURE PROCEDURES
AMDT 4A 13066 (FAA)

DEPARTURE PROCEDURE: **Rwy 17**, climbing right turn via heading 220° to 2100 before proceeding on course. **Rwy 22**, climb via heading 224° to 1100 before proceeding east or southeast bound. **Rwy 35**, climb via heading 349° to 600 before proceeding on course.

NOTE: **Rwy 4**, road 324' from DER, 524' left of centerline, 15' AGL/79' MSL. Multiple trees beginning 119' from DER, 231' right of centerline, up to 60' AGL/193' MSL. **Rwy 17**, bush 116' from DER, 164' left of centerline, 10' AGL/47' MSL. Tree 245' from DER, 346' right of centerline, 44' AGL/82' MSL. **Rwy 22**, multiple poles and trees beginning 562' from DER, 329' left of centerline, up to 60' AGL/135' MSL. Terrain, multiple poles and trees beginning 450' left of DER, up to 60' AGL/142' MSL. Power lines beginning 626' from DER, 359' right of centerline, 35' AGL/103' MSL. **Rwy 35**, terrain and multiple trees beginning 35' from DER, 340' left of centerline, up to 60' AGL/217' MSL. Glideslope antenna and multiple trees beginning 657' from DER, 565' right of centerline up to 60' AGL/146' MSL.

14317

TAKEOFF MINIMUMS, (OBSTACLE) DEPARTURE PROCEDURES, AND DIVERSE VECTOR AREA (RADAR VECTORS)

BARRE-MONTPELIER, VT

EDWARD F. KNAPP STATE (MPV)

TAKEOFF MINIMUMS AND (OBSTACLE)
DEPARTURE PROCEDURES
AMDT 5 14317 (FAA)

TAKEOFF MINIMUMS: **Rwy 17**, 500-2 w/min. climb of 270' per NM to 2700 or 1900-3 for VCOA.

Rwy 23, 1900-3 for VCOA.
DEPARTURE PROCEDURE: **Rwy 5**, climb heading 048° to 2100 then climbing left turn to 3900 direct MPV VOR/DME before proceeding on course. **Rwy 17**, climb heading 168° to 2600 then climbing left turn to 3500 direct MPV VOR/DME before proceeding on course. **Rwy 17, Rwy 35**, climbing right turn to 3900 direct MPV VOR/DME before proceeding on course. **Rwys 17, 23**, obtain ATC approval for VCOA when requesting IFR clearance. Climb in visual conditions to cross Edward F Knapp state airport at or above 2900' MSL.

NOTE: **Rwy 5**, vehicles on road beginning 0.69' from DER, crossing centerline, up to 15' AGL/1133' MSL. Terrain 104' from DER, 253' left of centerline, up to 1089' MSL. Trees beginning 347' from DER, crossing centerline, up to 100' AGL/1199' MSL. **Rwy 17**, tower 80' from DER, 368' right of centerline, up to 41' AGL/1223' MSL. Trees beginning 139' from DER, 409' right of centerline, up to 100' AGL/1243' MSL. Navaid 141' from DER, up to 5' AGL/1171' MSL. Navaid 199' from DER, up to 7' AGL/1172' MSL. Pole 257' from DER, 165' left of centerline, up to 27' AGL/1178' MSL. Trees 297' from DER, crossing centerline, up to 100' AGL/1193' MSL. Trees 667' from DER, crossing centerline, up to 100' AGL/1259' MSL. Building 1318' from DER, 254' left of centerline, up to 43' AGL/1221' MSL. Tower 1318' from DER, 669' left of centerline, up to 38' AGL/1208' MSL. Trees 1498' from DER, crossing centerline, up to 100' AGL/1309' MSL. Pole 1703' from DER, 41' right of centerline, up to 33' AGL/1243' MSL. Trees 1898' from DER, 726' right of centerline, up to 100' AGL/1387' MSL. Pole 1970' from DER, 539' right of centerline, up to 27' AGL/1334' MSL. Trees 2088' from DER, crossing centerline, up to 100' AGL/1384' MSL. Trees 4872' from DER, crossing centerline, up to 100' AGL/1579' MSL. **Rwy 23**, poles beginning 2' from DER, 335' left of centerline, up to 39' AGL/1167' MSL. Fence 49' from DER, 276' left of centerline, up to 7' AGL/1127' MSL. Tower 561' from DER, 573' left of centerline, up to 88' AGL/1215' MSL. Building 603' from DER, 426' left of centerline, up to 37' AGL/1159' MSL. Tower 615' from DER, 580' left of centerline, up to 68' AGL/1195' MSL. Rod 615' from DER, 580' left of centerline, up to 60' AGL/1195' MSL. Trees beginning 1263' from DER, crossing centerline, up to 100' AGL/1183' MSL. Pole 2801' from DER, 702' left of centerline, up to 27' AGL/1202' MSL. Pole 2867' from DER, 152' right of centerline, up to 55' AGL/1233' MSL. Trees 2880' from DER, crossing centerline, up to 100' AGL/1243' MSL. Tower 3010' from DER, 404' right of centerline, up to 36' AGL/1221' MSL. Trees 3299' from DER, crossing centerline, up to 100' AGL/1275' MSL. Trees 4491' from DER, crossing centerline, up to 100' AGL/1389' MSL. Trees 4944' from DER, crossing centerline, up to 100' AGL/1459' MSL. Trees 6298' from DER, crossing centerline, up to 100' AGL/1499' MSL. Trees 7273' from DER, crossing centerline, up to 100' AGL/1559' MSL. **Rwy 35**, bush 74' from DER, 288' left of centerline, up to 10' AGL/1097' MSL. Building 81' from DER, 488' right of centerline, up to 6' AGL/1094' MSL. Trees beginning 411' from DER, crossing centerline, up to 100' AGL/1132' MSL.

08 JAN 2015 to 05 FEB 2015

TAKEOFF MINIMUMS, (OBSTACLE) DEPARTURE PROCEDURES, AND DIVERSE VECTOR AREA (RADAR VECTORS)

14317

BEDFORD, MA

LAURENCE G. HANSCOM FIELD (BED)
TAKEOFF MINIMUMS AND (OBSTACLE)
DEPARTURE PROCEDURES

AMDT 6 13178 (FAA)

TAKEOFF MINIMUMS: **Rwy 11**, 300-1¼ or std. w/ min. climb of 251' per NM to 400, or alternatively, with standard takeoff minimums and a normal 200' per NM climb gradient, takeoff must occur no later than 2100' prior to DER. **Rwy 23**, 300-2 or std. w/ min. climb of 426' per NM to 500.

NOTE: **Rwy 5**, trees, fence, bush, and vegetation beginning 44' from DER, 84' left and 113' right of centerline, up to 39' AGL/171' MSL. Trees and poles beginning 1153' from DER, 11' left and 117' right of centerline, up to 71' AGL/221' MSL. Trees beginning 2528' from DER, 9' left and 2' right of centerline, up to 91' AGL/235' MSL. **Rwy 11**, sign 81' from DER, 237' right of centerline, 14' AGL/126' MSL. Trees beginning 1431' from DER, 684' right of centerline, up to 53' AGL/181' MSL. Trees beginning 1875' from DER, 99' left and 457' right of centerline, up to 73' AGL/231' MSL. Tower 5028' from DER, 1681' left of centerline, 155' AGL/285' MSL. **Rwy 23**, sign 2' from DER, 303' right of centerline, 6' AGL/133' MSL. Vehicle on road 534' from DER, from 293' right to 3' right of centerline, up to 15' AGL/167' MSL. Building 614' from DER, 620' left of centerline, 23' AGL/151' MSL. Trees, terrain, and pole beginning 855 from DER, 379' left and 337' right of centerline, up to 38' AGL/180' MSL. Trees beginning 1090' from DER, 558' left and 263' right of centerline, up to 48' AGL/232' MSL. Trees and building beginning 1588' from DER, 88' left and 138' right of centerline, up to 95' AGL/259' MSL. Trees beginning 2149' from DER, 524' left and 213' right of centerline, up to 100' AGL/286' MSL. Trees, buildings, and tower beginning 3721' from DER, 48' left and 4' right of centerline, up to 100' AGL/379' MSL. **Rwy 29**, sign 13' from DER, 273' right of centerline, 24' AGL/135' MSL. Tree 391' from DER, 487' left of centerline, 20' AGL/153' MSL. Poles and trees beginning 1109' from DER, 734' left and 49' right of centerline, up to 106' AGL/243' MSL. Trees beginning 3007' from DER, 6' left and 49' right of centerline, up to 100' AGL/243' MSL.

BELFAST, ME

BELFAST MUNI (BST)
TAKEOFF MINIMUMS AND (OBSTACLE)
DEPARTURE PROCEDURES
AMDT 2 07130 (FAA)

TAKEOFF MINIMUMS: **Rwy 33**, 300-1¾ or std. with a min. climb of 219' per NM to 600.

DEPARTURE PROCEDURE: **Rwy 15**, climb heading 136° to 900 before turning south.

NOTE: **Rwy 33**, light pole 1955' from DER, 510' left of centerline, 100' AGL/297' MSL. Multiple trees beginning 1.4 NM from DER, 1682' left of centerline, up to 80' AGL/429' MSL.

BENNINGTON, VT

WILLIAM H. MORSE STATE (DDH)
TAKEOFF MINIMUMS AND (OBSTACLE)
DEPARTURE PROCEDURES
AMDT 3 12152 (FAA)

TAKEOFF MINIMUMS: **Rwy 13**, std. w/min. climb of 645' per NM to 4000 or 2600-3 for climb in visual conditions.

Rwy 31, 400-1 w/ min. climb of 300' per NM to 4200 or 2600-3 for climb in visual conditions.

DEPARTURE PROCEDURE: **Rwy 13**, climbing left turn direct CAM VOR/DME, continue climb-in-hold (North, right turns, 160° inbound) to 4400 before proceeding on course or...

Rwy 31, climbing right turn direct CAM VOR/DME, continue climb-in-hold (North, right turns, 160° inbound) to 4400 before proceeding on course or...

... For climb in visual conditions: cross William H. Morse State Airport at or above 3300 before proceeding on course. When executing VCOA, notify ATC prior to departure.

NOTE: **Rwy 13**, rising terrain beginning 100' from DER, right to left of centerline, up to 868' MSL. Poles beginning 195' from DER, 229' right of centerline, up to 30' AGL/858' MSL. Trees beginning 358' from DER, left and right of centerline, up to 95' AGL/1279' MSL. **Rwy 31**, multiple trees beginning 116' from DER, right and left of centerline, up to 95' AGL/1139' MSL.

BERLIN, NH

BERLIN RGNL (BML)
TAKEOFF MINIMUMS AND (OBSTACLE)
DEPARTURE PROCEDURES
AMDT 1 11069 (FAA)

TAKEOFF MINIMUMS: **Rwy 18**, std. w/min. climb of 462' per NM to 4000 or 3500-3 for climb in visual conditions.

Rwy 36, std. w/min. climb of 400' per NM to 4400 or 3500-3 for climb in visual conditions.

DEPARTURE PROCEDURE: **Rwy 18**, climbing right turn to 7000 direct BML VOR/DME, continue climb in BML VOR/DME holding pattern (hold SW, left turns, 030° inbound) to cross BML VOR/DME at or above the MEA for direction of flight, or for climb in visual conditions cross Berlin RGNL Airport at or above 4500 before proceeding on course. **Rwy 36**, climbing right turn to 7000 direct BML VOR/DME, continue climb in BML VOR/DME holding pattern (hold SW, left turns, 030° inbound) to cross BML VOR/DME at or above the MEA for direction of flight, or for climb in visual conditions cross Berlin RGNL Airport at or above 4500 before proceeding on course.

NOTE: **Rwy 18**, building 44' from DER, 361' left of centerline, up to 10' AGL/1143' MSL. Trees 19' from DER, 5' right of centerline, up to 100' AGL/1267' MSL. Trees 44' from DER, 2' left of centerline, up to 100' AGL/1281' MSL. **Rwy 36**, bush 47' from DER, 153' left of centerline, up to 45' AGL/1168' MSL. Trees 27' from DER, 28' right of centerline, up to 100' AGL/1298' MSL. Trees 9' from DER, 123' left of centerline, up to 100' AGL/1224' MSL.

BERLIN, NH

BERLIN RGNL (BML)
TAKEOFF MINIMUMS AND (OBSTACLE)
DEPARTURE PROCEDURES
AMDT 1 11069 (FAA)

TAKEOFF MINIMUMS: **Rwy 18**, std. w/min. climb of 462' per NM to 4000 or 3500-3 for climb in visual conditions.

Rwy 36, std. w/min. climb of 400' per NM to 4400 or 3500-3 for climb in visual conditions.

DEPARTURE PROCEDURE: **Rwy 18**, climbing right turn to 7000 direct BML VOR/DME, continue climb in BML VOR/DME holding pattern (hold SW, left turns, 030° inbound) to cross BML VOR/DME at or above the MEA for direction of flight, or for climb in visual conditions cross Berlin RGNL Airport at or above 4500 before proceeding on course. **Rwy 36**, climbing right turn to 7000 direct BML VOR/DME, continue climb in BML VOR/DME holding pattern (hold SW, left turns, 030° inbound) to cross BML VOR/DME at or above the MEA for direction of flight, or for climb in visual conditions cross Berlin RGNL Airport at or above 4500 before proceeding on course.

NOTE: **Rwy 18**, building 44' from DER, 361' left of centerline, up to 10' AGL/1143' MSL. Trees 19' from DER, 5' right of centerline, up to 100' AGL/1267' MSL. Trees 44' from DER, 2' left of centerline, up to 100' AGL/1281' MSL. **Rwy 36**, bush 47' from DER, 153' left of centerline, up to 45' AGL/1168' MSL. Trees 27' from DER, 28' right of centerline, up to 100' AGL/1298' MSL. Trees 9' from DER, 123' left of centerline, up to 100' AGL/1224' MSL.

14317

TAKEOFF MINIMUMS, (OBSTACLE) DEPARTURE PROCEDURES, AND DIVERSE VECTOR AREA (RADAR VECTORS)

TAKEOFF MINIMUMS, (OBSTACLE) DEPARTURE PROCEDURES, AND DIVERSE VECTOR AREA (RADAR VECTORS)

14317

BEVERLY, MA

BEVERLY MUNI (BVY)

TAKEOFF MINIMUMS AND (OBSTACLE)

DEPARTURE PROCEDURES

AMDT 3 11069 (FAA)

DEPARTURE PROCEDURE: **Rwy 27**, climb heading 270° to 700 before turning left.

NOTE: **Rwy 9**, trees beginning 127' from DER, 74' left of centerline, up to 115' AGL/232' MSL. Trees beginning 303' from DER, 214' right of centerline, up to 96' AGL/193' MSL. **Rwy 16**, navaid and trees beginning 72' from DER, 234' left of centerline, up to 80' AGL/148' MSL. Terrain, light poles, stacks, buildings, and trees beginning 306' from DER, 5' right of centerline, up to 76' AGL/193' MSL. **Rwy 27**, antenna on building and trees beginning 182' from DER, 119' left of centerline, up to 108' AGL/217' MSL. Trees beginning 243' from DER, 109' right of centerline, up to 102' AGL/160' MSL. **Rwy 34**, trees beginning 430' from DER, 5' left of centerline, up to 91' AGL/188' MSL. Pole and trees beginning 509' from DER, 1' right of centerline, up to 77' AGL/174' MSL.

BIDDEFORD, ME

BIDDEFORD MUNI (B19)

TAKEOFF MINIMUMS AND (OBSTACLE)

DEPARTURE PROCEDURES

ORIG 07298 (FAA)

TAKEOFF MINIMUMS: **Rwy 24**, 300-2 or std. w/ min. climb of 214' per NM to 600, or alternatively, w/ std. takeoff minimums and normal 200'/NM climb gradient, takeoff must occur no later than 1700 prior to DER.

NOTE: **Rwy 6**, multiple trees beginning 121' from DER, 243' left of centerline, up to 60' AGL/229' MSL. Multiple trees beginning 23' from DER, 132' right of centerline, up to 60' AGL/219' MSL. Multiple trees beginning 538' from DER, 6' right of centerline, up to 60' AGL/229' MSL. **Rwy 24**, multiple trees beginning 342' from DER, 287' left of centerline, up to 60' AGL/219' MSL. Multiple trees beginning 492' from DER, 242' right of centerline, up to 60' AGL/209' MSL. Multiple trees beginning 1317' from DER, 44' right of centerline, up to 60' AGL/209' MSL. Assumed obstacle 1.7 NM from DER, 1802' right of centerline, 200' AGL/429' MSL.

BLOCK ISLAND, RI

BLOCK ISLAND STATE (BID)

TAKEOFF MINIMUMS AND (OBSTACLE)

DEPARTURE PROCEDURES

AMDT 3 10042 (FAA)

NOTE: **Rwy 10**, bush 136' from DER, 183' left of centerline, 9' AGL/110' MSL. Tower 2736' from DER, 1203' left of centerline, 167' AGL/210' MSL. **Rwy 28**, buildings with chimneys beginning 1105' from DER, 8' left of centerline, up to 30' AGL/196' MSL. Trees beginning 3' from DER, 4' left of centerline, up to 87' AGL/189' MSL. Trees beginning 380' from DER, 70' left of centerline, up to 78' AGL/186' MSL. Windmill with antennas 3437' from DER, 1005' right of centerline, 72' AGL/257' MSL.

BOSTON, MA

GENERAL EDWARD LAWRENCE LOGAN INTL (BOS)

TAKEOFF MINIMUMS AND (OBSTACLE)

DEPARTURE PROCEDURES

AMDT 13 10322 (FAA)

TAKEOFF MINIMUMS: **Rwys 32, 33R**, N/A - environmental. **Rwy 4L**, 300-1 or std. w/ min. climb of 358' per NM to 300. **Rwy 9**, 300-1¼ or std. w/ min. climb of 257' per NM to 300. **Rwy 14**, 500-3 or std. w/ min. climb of 223' per NM to 600, or alternatively, with std. takeoff minimums and a normal 200' per NM climb gradient, takeoff must occur no later than 1900' prior to DER. **Rwy 22L**, 300-1 or std. if tower reports no tall vessels in the departure area. **Rwy 22R**, 400-2 or std. w/ min. climb of 320' per NM to 500. **Rwy 27**, std. w/ min. climb of 474' per NM to 1300. **Rwy 33L**, 300-1¼ or std. w/ min. climb of 224' per NM to 400, or alternatively, with std. takeoff minimums and a normal 200' per NM climb gradient, takeoff must occur no later than 1900 feet prior to DER.

DEPARTURE PROCEDURE: **Rwy 4L**, climb on a heading between 292° clockwise to 215° from DER, or minimum climb of 210' per NM to 1100 for all other courses. **Rwy 14**, climb on a heading between 322° clockwise to 258° from DER, or minimum climb of 236' per NM to 1100 for all other courses. **Rwy 15R**, climb heading 151° to 600 before turning right. **Rwy 22L**, climb heading 216° to 800 before turning right. **Rwy 22R**, climb heading 216° to 900 before turning right. **Rwy 33L**, climb heading 331° to 700 before turning left.

NOTE: **Rwy 4L**, ships beginning 693' from DER, on centerline, up to 50' AGL/50' MSL. Trees beginning 2094' from DER, 91' left of centerline, up to 46' AGL/143' MSL. Pole and trees beginning 1806' from DER, 740' right of centerline, up to 51' AGL/79' MSL. Trees 3975' from DER, 1486' left of centerline up to 71' AGL/198' MSL. **Rwy 4R**, ships beginning 579' from DER, on centerline, up to 50' AGL/50' MSL. Pole and trees beginning 1806' from DER, 403' left of centerline, up to 51' AGL/79' MSL. **Rwy 9**, ships 762' from DER, on centerline, up to 65' AGL/65' MSL. Tank 5904' from DER, 1453' left of centerline, 109' AGL/206' MSL. **Rwy 14**, ship rig 5439' from DER, 1824' right of centerline, 176' AGL/176' MSL. Windmill 2.5 NM from DER, 2997' right of centerline, 394' AGL/434' MSL. **Rwy 15L**, sign 169' from DER, 279' right of centerline, 6' AGL/19' MSL. **Rwy 15R**, sign 45' from DER, 267' right of centerline, 6' AGL/16' MSL. **Rwy 22L**, pole 394' from DER, on centerline, 15' AGL/31' MSL. Tower 3585' from DER, 926' left of centerline, 108' AGL/128' MSL. Mobile crane 3675' from DER, 439' right of centerline, 122' AGL/145' MSL. Ship rig 2440' from DER, 34' left of centerline, 176' AGL/176' MSL. **Rwy 22R**, ship rig 4064' from DER, 8' right of centerline, 176' AGL/176' MSL. Stacks beginning 1.4 NM from DER, 2795' right of centerline, up to 320' AGL/335' MSL. **Rwy 27**, light pole and rod beginning 1690' from DER, 759' right of centerline, up to 60' AGL/100' MSL. **Rwy 33L**, electrical systems, buildings, chimney on building, and tank beginning 796' from DER, 603' left of centerline, up to 40' AGL/149' MSL. Sign, wind indicator on tower, and trees beginning 248' from DER, 51' right of centerline, up to 35' AGL/ 101' MSL. Bridge 1.4 NM from DER, 2568' left of centerline, 262' AGL/262' MSL.

08 JAN 2015 to 05 FEB 2015

08 JAN 2015 to 05 FEB 2015

14317

TAKEOFF MINIMUMS, (OBSTACLE) DEPARTURE PROCEDURES, AND DIVERSE VECTOR AREA (RADAR VECTORS)

**TAKEOFF MINIMUMS, (OBSTACLE) DEPARTURE PROCEDURES, AND
DIVERSE VECTOR AREA (RADAR VECTORS)**

14317

BRIDGEPORT, CT

IGOR I. SIKORSKY MEMORIAL (BDR)

TAKEOFF MINIMUMS AND (OBSTACLE)
DEPARTURE PROCEDURES

AMDT 5 11293 (FAA)

TAKEOFF MINIMUMS: **Rwy 29**, 600-2¾ or std. w/min.
climb of 300' per NM to 700.

NOTE: **Rwy 6**, fence 14' from DER, 95' left of centerline, 17' AGL/18' MSL. Vehicles on road beginning 79' from DER, 1' right of centerline, up to 15' AGL/25' MSL. **Rwy 11**, vehicles on road beginning 195' from DER, 127' left of centerline, up to 15' AGL/28' MSL. Vehicles on road and poles beginning 207' from DER, 6' right of centerline, up to 73' AGL/73' MSL. **Rwy 24**, vehicles on road beginning 484' from DER, 537' right of centerline, up to 15' AGL/25' MSL. **Rwy 29**, building 555' from DER, 622' right of centerline, 57' AGL/59' MSL. Stack 2.2 NM from DER. 275' left of centerline, 497' AGL/512' MSL.

BRUNSWICK, ME

BRUNSWICK EXECUTIVE (BXM)

TAKEOFF MINIMUMS AND (OBSTACLE)
DEPARTURE PROCEDURES

ORIG 11237 (FAA)

NOTE: **Rwy 1L**, tree 2018' from DER, 943' right of centerline, 100' AGL/159' MSL. Trees beginning 2272' from DER, 335' left of centerline, up to 100' AGL/159' MSL. **Rwy 1R**, tree 1985' from DER, 345' right of centerline, 100' AGL/156' MSL. Tree 2823' from DER, 1045' left of centerline, 100' AGL/159' MSL. **Rwy 19L**, trees beginning 2170' from DER, 457' left of centerline, up to 100' AGL/179' MSL. Tree 2136' from DER, 498' right of centerline, 100' AGL/169' MSL. **Rwy 19R**, trees beginning 2137' from DER, 201' left of centerline, up to 100' AGL/179' MSL.

BURLINGTON, VT

BURLINGTON INTL (BTV)

TAKEOFF MINIMUMS AND (OBSTACLE)
DEPARTURE PROCEDURES

AMDT 13 10210 (FAA)

TAKEOFF MINIMUMS: **Rwy 1**, std. w/ min. climb of 290'
per NM to 3200 or 3000-3 for climb in visual conditions.

Rwy 15, std. w/ min. climb of 375' per NM to 5900 or 3000-3 for climb in visual conditions. **Rwy 19**, std. w/ min. climb of 290' per NM to 5300 or 3000-3 for climb in visual conditions. **Rwy 33**, std. w/ min. climb of 210' per NM to 2400 or 3000-3 for climb in visual conditions.

DEPARTURE PROCEDURE: **Rwy 1**, climb heading 006° to 3200 before proceeding on course or for climb in visual conditions cross Burlington Intl airport at or above 3200 before proceeding on course. **Rwy 15**, for climb in visual conditions cross Burlington Intl airport at or above 3200 before proceeding on course. **Rwy 19**, climb heading 186° to 3200 before proceeding on course or for climb in visual conditions cross Burlington Intl airport at or above 3200 before proceeding on course. **Rwy 33**, climb heading 326° to 2400 before proceeding on course or for climb in visual conditions cross Burlington Intl airport at or above 3200 before proceeding on course.

NOTE: **Rwy 1**, trees beginning 1396' from DER, 216' right of centerline, up to 64' AGL/384' MSL trees 1694' from DER, 200' left of centerline, up to 80' AGL/380' MSL.

Rwy 15, bush 318' from DER, 292' left of centerline, up to 23' AGL/343' MSL. Trees beginning 1418' from DER, 358' right of centerline, up to 27 feet AGL/387' MSL. Hopper and trees beginning 1801' from DER, 377' left of centerline, up to 63' AGL/403' MSL. Building 3453' from DER, 1145' left of centerline, 110' AGL/430' MSL. **Rwy 19**, trees beginning 168' from DER, 24' right of centerline, up to 56' AGL/436' MSL. Trees beginning 172' from DER, 184' left of centerline, up to 93' AGL/413' MSL. **Rwy 33**, pole and trees beginning 971' from DER, 755' left of centerline, up to 97' AGL/357' MSL. Trees 1091' from DER, 590' right of centerline, up to 34' AGL/334' MSL.

CARIBOU, ME

CARIBOU MUNI (CAR)

TAKEOFF MINIMUMS AND (OBSTACLE)
DEPARTURE PROCEDURES

AMDT 1 95061 (FAA)

TAKEOFF MINIMUMS: **Rwys 1, 11, 19, 29**, 300-1.**CHATHAM, MA**

CHATHAM MUNI (CQX)

TAKEOFF MINIMUMS AND (OBSTACLE)
DEPARTURE PROCEDURES

ORIG 07298 (FAA)

TAKEOFF MINIMUMS: **Rwy 6**, 300-1 or std. w/ min. climb of 462' per NM to 300. **Rwy 24**, 400-2 or std. w/ min. climb of 248' per NM to 500.

NOTE: **Rwy 6**, multiple trees beginning 26' from DER, 158' left of centerline, up to 100' AGL/169' MSL. Multiple trees beginning 62' from DER, 245' right of centerline, up to 100' AGL/159' MSL. **Rwy 24**, multiple trees beginning 179' from DER, 216' left of centerline, up to 100' AGL/159' MSL. Multiple trees beginning 318' from DER, 227' right of centerline, up to 100' AGL/159' MSL. Tower 1.6 NM from DER, 2526' right of centerline, 313' AGL/318' MSL.

14317

**TAKEOFF MINIMUMS, (OBSTACLE) DEPARTURE PROCEDURES, AND
DIVERSE VECTOR AREA (RADAR VECTORS)**

TAKEOFF MINIMUMS, (OBSTACLE) DEPARTURE PROCEDURES, AND DIVERSE VECTOR AREA (RADAR VECTORS)

14317

CHESTER, CT

CHESTER (SNC)

TAKEOFF MINIMUMS AND (OBSTACLE) DEPARTURE PROCEDURES

ORIG 10322 (FAA)

TAKEOFF MINIMUMS: **Rwy 35**, 300-3 or std. w/ min. climb of 285' per NM to 900.

NOTE: **Rwy 17**, trees beginning at DER, 350' left of centerline CW to 250' right of centerline, up to 100' AGL/449' MSL. **Rwy 35**, tree 6015' from DER, 586' right of centerline 100' AGL/609' MSL. Tree 1.7 NM from DER, 847' right of centerline 200' AGL/709' MSL. Tree line beginning 100' from DER, 250' left of centerline to 1000' right of centerline, up to 100' AGL/469' MSL.

CLAREMONT, NH

CLAREMONT MUNI (CNH)

TAKEOFF MINIMUMS AND (OBSTACLE) DEPARTURE PROCEDURES

AMDT 2 05244 (FAA)

TAKEOFF MINIMUMS: **Rwy 11**, 700-3 or std. w/ min. climb of 490' per NM to 1400, or 3100-2½ for climb in visual conditions. **Rwy 29**, 1300-3 or 3100-2½ for climb in visual conditions.

DEPARTURE PROCEDURE: **Rwys 11, 29**, climb in visual conditions to cross Claremont Muni at or above 3000.

NOTE: **Rwy 11**, multiple trees and towers on rising terrain, 1.5 NM from DER, 3000' right of centerline, and 1.6 NM from DER, 2660' left of centerline, up to 200' AGL/1143' MSL. **Rwy 29**, multiple trees on rising terrain, 1.1 NM from DER, 800' left of centerline, and 1.3 NM from DER, 2000' right of centerline, up to 80' AGL/1044' MSL. Trees and towers 2 NM from DER on centerline, up to 200' AGL/929' MSL.

CONCORD, NH

CONCORD MUNI (CON)

TAKEOFF MINIMUMS AND (OBSTACLE) DEPARTURE PROCEDURES

AMDT 4 14149 (FAA)

TAKEOFF MINIMUMS: **Rwy 12**, std. w/min. climb of 305' per NM to 1000 or 1300-2½ for climb in visual conditions. **Rwy 17**, 300-2¼ or std. w/min. climb of 260' per NM to 700. **Rwy 30**, std. w/min. climb of 235' per NM to 1200 or 1300-2½ for climb in visual conditions.

DEPARTURE PROCEDURE: **Rwy 12**, climb heading 121° to 800 then climbing right turn to CON VORTAC before proceeding on course, or for climb in visual conditions cross Concord Muni airport at or above 1500 before proceeding on course. When executing VCOA, notify ATC prior to departure. **Rwy 17**, climb heading 171° to 1000 before turning left. **Rwy 30**, climb heading 301° to 900 before proceeding on course, or for climb in visual conditions cross Concord Muni airport at or above 1500 before proceeding on course. When executing VCOA, notify ATC prior to departure. **Rwy 35**, climb heading 341° to 1200 before proceeding on course.

NOTE: **Rwy 12**, tree abeam DER, 267' left of centerline, 16' AGL/361' MSL. Tree 6' from DER, 353' right of centerline, 54' AGL/396' MSL. Trees beginning 88' from DER, 7' left of centerline, up to 69' AGL/391' MSL. Trees beginning 106' from DER, 100' right of centerline, up to 52' AGL/394' MSL. Pole 483' from DER, 324' right of centerline, 45' AGL/376' MSL. Trees beginning 1032' from DER, 131' left of centerline, up to 86' AGL/421' MSL. Trees beginning 1075' from DER, 207' right of centerline, up to 100' AGL/431' MSL. Tree 1.1NM from DER, 2142' right of centerline, 107' AGL/513' MSL. Tree beginning 1.5NM from DER, 2160' left of centerline, 76' AGL/622' MSL. **Rwy 17**, trees beginning 95' from DER, 285' left of centerline, up to 88' AGL/378' MSL. Trees beginning 984' from DER, 509' right of centerline, up to 77' AGL/406' MSL. Tree 1252' from DER, 658' left of centerline, 69' AGL/371' MSL. Trees beginning 1.3NM from DER, 1048' left of centerline, up to 102' AGL/618' MSL. Tower 1.6NM from DER, 2080' left of centerline, 90' AGL/607' MSL. **Rwy 30**, trees and poles beginning 554' from DER, 330' right of centerline, up to 59' AGL/400' MSL. Tower 613' from DER, 580' left of centerline, 38' AGL/378' MSL. Building 627' from DER, 184' right of centerline, 21' AGL/362' MSL. Trees beginning 1132' from DER, 271' left of centerline, up to 98' AGL/430' MSL. Tower 1177' from DER, 381' left of centerline, 47' AGL/385' MSL. Building 1190' from DER, 390' left of centerline, 41' AGL/379' MSL. Building 1734' from DER, 522' right of centerline, 60' AGL/399' MSL. Trees beginning 1893' from DER, 126' left of centerline, up to 112' AGL/442' MSL. Trees beginning 2108' from DER, 47' right of centerline, up to 105' AGL/437' MSL. **Rwy 35**, fence 259' from DER, 492' left of centerline, 8' AGL/348' MSL. Vehicle on road beginning 276' from DER, 91' left of centerline, 15' AGL/372' MSL. Buildings beginning 296' from DER, 256' left of centerline, up to 21' AGL/362' MSL. Trees beginning 409' from DER, 60' left of centerline, up to 62' AGL/403' MSL. Trees beginning 539' from DER, 17' right of centerline, up to 72' AGL/415' MSL. Poles beginning 643' from DER, 53' right of centerline, up to 34' AGL/376' MSL. Poles beginning 703' from DER, 276' left of centerline, up to 41' AGL/381' MSL. Trees beginning 1142' from DER, 20' left of centerline, up to 102' AGL/440' MSL. Trees beginning 1298' from DER, 39' right of centerline, up to 87' AGL/430' MSL.

08 JAN 2015 to 05 FEB 2015

08 JAN 2015 to 05 FEB 2015

14317

TAKEOFF MINIMUMS, (OBSTACLE) DEPARTURE PROCEDURES, AND DIVERSE VECTOR AREA (RADAR VECTORS)

TAKEOFF MINIMUMS, (OBSTACLE) DEPARTURE PROCEDURES, AND DIVERSE VECTOR AREA (RADAR VECTORS)

14317

DANBURY, CT

DANBURY MUNI (DXR)

TAKEOFF MINIMUMS AND (OBSTACLE)
DEPARTURE PROCEDURES

AMDT 4 12124 (FAA)

TAKE OFF MINIMUMS: **Rwy 17**, NA - terrain. **Rwy 8**, 600-2. **Rwy 26**, 600-2½. **Rwy 35**, std. w/min. climb of 470' per NM to 1100 or 1200-2½ for climb in visual conditions.

DEPARTURE PROCEDURE: **Rwy 8**, climb heading 084° to 1200 before turning. **Rwy 26**, climb heading 264° to 1300 before turning. **Rwy 35**, for climb in visual conditions, cross Danbury Muni at or above 1500 before proceeding on course. When executing VCOA, notify ATC prior to departure.

NOTE: **Rwy 8**, vehicles on roadway 93' from DER, 222' right of centerline, up to 15' AGL/480' MSL. Pole 308' from DER, 185' right of centerline, 39' AGL/505' MSL. Buildings beginning 316' from DER, 366' left of centerline, up to 35' AGL/499' MSL. Pole 691' from DER, 150' right of centerline, 56' AGL/524' MSL. Pole 885' from DER, 333' left of centerline, 62' AGL/532' MSL. Building 1876' from DER, 520' left of centerline, 61' AGL/646' MSL. Pole 2017' from DER, 201' right of centerline, 96' AGL/701' MSL. Trees and pole beginning 2372' from DER, 28' right of centerline, up to 105' AGL/799' MSL. Building 1.5 NM from DER, 786' right of centerline, 118' AGL/722' MSL. Tower 1.5 NM from DER, 2377' right of centerline, 275' AGL/1015' MSL. **Rwy 26**, terrain 85' from DER, 240' left of centerline, 461' MSL. Trees beginning 1543' from DER, 910' left of centerline, up to 100' AGL/959' MSL. Pole 1.2 NM from DER, 915' left of centerline, 100' AGL/709' MSL. Pole 2 NM from DER, 1375' left of centerline, 82' AGL/825' MSL. **Rwy 35**, fence 43' from DER, 59' left of centerline, 18' AGL/458' MSL. Vehicles on roadway 77' from DER, left and right of centerline, up to 15' AGL/467' MSL. Poles beginning 416' from DER, left and right of centerline, up to 72' AGL/505' MSL. Building 916' from DER, 462' right of centerline, 95' AGL/521' MSL. Trees beginning 1.3 NM from DER, 427' right of centerline, up to 100' AGL/839' MSL. Building 1.2 NM from DER, 695' right of centerline, 62' AGL/722' MSL. Building 1.4 NM from DER, 187' right of centerline, 59' AGL/758' MSL.

DANIELSON, CT

DANIELSON (LZD)

TAKEOFF MINIMUMS AND (OBSTACLE)
DEPARTURE PROCEDURES

AMDT 3 93231 (FAA)

TAKEOFF MINIMUMS: **Rwy 13**, 700-2 or std. with a min. climb of 300' per NM to 1100.

DEPARTURE PROCEDURE: **Rwy 13**, climb to 1100 before turning on course. **Rwy 31**, climb to 1000 feet before turning on course.

DEXTER, ME

DEXTER RGNL (1B0)

TAKEOFF MINIMUMS AND (OBSTACLE)
DEPARTURE PROCEDURES

AMDT 1 12096 (FAA)

TAKEOFF MINIMUMS: **Rwys 7, 25**, NA, Turf. **Rwy 34**, 600-2½ or std. w/min. climb of 355' per NM to 1200. DEPARTURE PROCEDURE: **Rwy 16**, climb heading 157° to 1200 before turning northeast bound. **Rwy 34**, climb heading 337° to 1300 before proceeding on course.

NOTE: **Rwy 16**, trees, power lines, vehicles, and buildings beginning 105' from DER, left and right of centerline, up to 100' AGL/629' MSL. **Rwy 34**, trees beginning 53' from DER, left and right of centerline, up to 100' AGL/619' MSL.

EASTPORT, ME

EASTPORT MUNI (EPM)

TAKEOFF MINIMUMS AND (OBSTACLE)
DEPARTURE PROCEDURES

ORIG 94174 (FAA)

TAKEOFF MINIMUMS: **Rwy 33**, 300-1 or std. with a min. climb of 240' per NM to 300.

ELIOT, ME

LITTLEBROOK AIR PARK (3B4)

TAKEOFF MINIMUMS AND (OBSTACLE)
DEPARTURE PROCEDURES

ORIG 03247 (FAA)

NOTE: **Rwy 12**, house 118' right of DER, 23' AGL/129' MSL. Brush 200' from DER, 66' left of centerline, 16' AGL/122' MSL. Trees 345' from DER, 140' left of centerline, 71' AGL/130' MSL. **Rwy 30**, trees 220' from DER, 125' right of centerline, 19' AGL/144' MSL. Brush 100' right of DER, 20' AGL/159' MSL.

FITCHBURG, MA

FITCHBURG MUNI (FIT)

TAKEOFF MINIMUMS AND (OBSTACLE)
DEPARTURE PROCEDURES

AMDT 5 05244 (FAA)

TAKEOFF MINIMUMS: **Rwys 2, 14, 20**, NA-obstacles. **Rwy 32**, std. with a min. climb of 314' per NM to 1600, or 1500-2½ for climb in visual conditions.

DEPARTURE PROCEDURE: **Rwy 32**, climb via heading 324° to 2600 before proceeding on course. For climb in visual conditions: cross Fitchburg Muni Airport at or above 1800.

NOTE: **Rwy 32**, multiple trees beginning 144' from DER, 260' left of centerline up to 100' AGL/796' MSL, multiple trees beginning 36' from DER, 150' right of centerline up to 100' AGL/796' MSL.

08 JAN 2015 to 05 FEB 2015

08 JAN 2015 to 05 FEB 2015

14317

TAKEOFF MINIMUMS, (OBSTACLE) DEPARTURE PROCEDURES, AND DIVERSE VECTOR AREA (RADAR VECTORS)

**TAKEOFF MINIMUMS, (OBSTACLE) DEPARTURE PROCEDURES, AND
DIVERSE VECTOR AREA (RADAR VECTORS)**

14317

FRENCHVILLE, ME

NORTHERN AROOSTOOK RGNL (FVE)

TAKEOFF MINIMUMS AND (OBSTACLE)

DEPARTURE PROCEDURES

ORIG 07298 (FAA)

TAKEOFF MINIMUMS: **Rwy 32**, 300-1¼ or std. w/ min. climb of 503' per NM to 1300.NOTE: **Rwy 14**, trees beginning 101' from DER, 348' right of centerline, up to 80' AGL/1079' MSL. **Rwy 32**, trees beginning 3128' from DER, 952' left of centerline, up to 80' AGL/1179' MSL, trees beginning 1608' from DER, 433' right of centerline, up to 80' AGL/1119' MSL.**FRYEBURG, ME**

EASTERN SLOPES RGNL (IZG)

TAKEOFF MINIMUMS AND (OBSTACLE)

DEPARTURE PROCEDURES

AMDT 4A 10070 (FAA)

TAKEOFF MINIMUMS: **Rwy 14**, std. with a min. climb of 310' per NM to 2100, or 1600-3 for climb in visual conditions. **Rwy 32**, 2200-2 with a min. climb of 471' per NM to 6600.DEPARTURE PROCEDURE: **Rwy 14**, climb heading 143° to 3000 before turning. For climb in visual conditions cross Eastern Slopes Rgnl airport at or above 3800 before proceeding on course. **Rwy 32**, for climb in visual conditions cross Eastern Slopes Rgnl airport at or above 3800 before proceeding on course.NOTE: **Rwy 32**, tree 454' from DER, 558' left of centerline, 100' AGL/579' MSL. Trees beginning 1249' from DER, 734' right of centerline, up to 100' AGL/659' MSL. Trees and tower beginning 1.1 NM from DER, 2155' left of centerline, up to 100' AGL/1139' MSL.**GARDNER, MA**

GARDNER MUNI (GDM)

TAKEOFF MINIMUMS AND (OBSTACLE)

DEPARTURE PROCEDURES

AMDT 3 13010 (FAA)

TAKEOFF-MINIMUMS: **Rwys 18, 36**, 1000-2½ for climb in visual conditions.DEPARTURE PROCEDURE: **Rwys 18, 36**, for climb in visual conditions, cross Gardner Muni airport at or above 1900 before proceeding on course. When executing VCOA, notify ATC prior to departure.NOTE: **Rwy 18**, trees beginning 3' from DER, 470' right of centerline, up to 100' AGL/1183' MSL. Trees beginning 58' from DER, 172' left of centerline, up to 100' AGL/1183' MSL. Trees beginning 1.0 NM from DER, 1579' left of centerline, up to 100' AGL/1229' MSL. Trees beginning 1.3 NM from DER, 2535' right of centerline, up to 100' AGL/1163' MSL. **Rwy 36**, trees beginning 130' from DER, 260' right of centerline, up to 100' AGL/1091' MSL. Trees beginning 159' from DER, 436' left of centerline, up to 100' AGL/1104' MSL.**GREAT BARRINGTON, MA**

WALTER J. KOLADZA (GBR)

TAKEOFF MINIMUMS AND (OBSTACLE)

DEPARTURE PROCEDURES

AMDT 3 13122 (FAA)

TAKEOFF MINIMUMS: **Rwy 11**, std. w/ min. climb of 570' per NM to 2500' or 2300-3 for climb in visual conditions. **Rwy 29**, std. w/ min. climb of 405' per NM to 2600' or 2300-3 for climb in visual conditions.DEPARTURE PROCEDURE: **Rwy 11**, climb heading 110° to 2500 before proceeding on course or for climb in visual conditions: cross Walter J. Koladza airport at or above 2900 MSL before proceeding on course.

When executing VCOA, notify ATC prior to departure.

Rwy 29, climb heading 290° to 2600 before proceeding on course or for climb in visual conditions: cross Walter J. Koladza airport at or above 2900 MSL before proceeding on course. When executing VCOA, notify ATC prior to departure.NOTE: **Rwy 11**, vehicles beginning 5' from DER, from 253' left to 531' right of centerline, up to 15' AGL/740' MSL. Trees beginning 55' from DER, from 282' left of centerline to 898' left of centerline, up to 100' AGL/854' MSL. Trees beginning 505' from DER, 496' right of centerline, up to 100' AGL/854' MSL. Trees beginning 1337' from DER, 91' right of centerline, up to 100' AGL/874' MSL. Vehicles beginning at 1635' from DER, from 951' left to 926' right of centerline, up to 15' AGL/740' MSL. **Rwy 29**, vehicles beginning 16' from DER, 471' left of centerline to 1815' right of centerline, up to 15' AGL/864' MSL. Trees beginning 19' from DER, from 249' to 1532' right of centerline, up to 100' AGL/844' MSL. Trees beginning 19' from DER, from 495' to 2608' left of centerline, up to 100' AGL/844' MSL. Trees beginning 496' from DER, 495' left of centerline, up to 100' AGL/844' MSL. Trees beginning 250' from DER, 249' right of centerline, up to 100' AGL/844' MSL. Trees beginning 429' from DER, 17' left of centerline, up to 100' AGL/834' MSL. Vehicles beginning at 1562' from DER, from 897' left to 826' right of centerline, up to 15' AGL/759' MSL. Trees beginning 1650' from DER, 154' right of centerline, up to 100' AGL/844' MSL.

08 JAN 2015 to 05 FEB 2015

08 JAN 2015 to 05 FEB 2015

14317

**TAKEOFF MINIMUMS, (OBSTACLE) DEPARTURE PROCEDURES, AND
DIVERSE VECTOR AREA (RADAR VECTORS)**

TAKEOFF MINIMUMS, (OBSTACLE) DEPARTURE PROCEDURES, AND DIVERSE VECTOR AREA (RADAR VECTORS)

14317

GREENVILLE, ME

GREENVILLE MUNI (3B1)

TAKEOFF MINIMUMS AND (OBSTACLE)

DEPARTURE PROCEDURES

AMDT 1 94202 (FAA)

TAKEOFF MINIMUMS: **Rwy 3**, 1000-3.**Rwys 21, 32**, 300-1.

DEPARTURE PROCEDURE: **Rwy 3**, climbing left turn heading 005° to 3000 before proceeding on course. **Rwys 14, 21**, climb runway heading to 3000 before proceeding on course. **Rwy 32**, climbing right turn heading 005° to 3000 before proceeding on course.

GREENVILLE (52B)

TAKEOFF MINIMUMS AND (OBSTACLE)

DEPARTURE PROCEDURES

AMDT 3 14205 (FAA)

TAKEOFF MINIMUMS: **Sea Lane 14**, std. w/min. climb of 849' per NM to 2200 or 500-2½ w/min. climb of 280' per NM to 2600 or 3900-3 for climb in visual conditions. **Sea Lane 18**, std. w/min. climb of 370' per NM to 2800 or 3900-3 for climb in visual conditions. **Sea Lane 32**, std. w/min. climb of 685' per NM to 2500 or 700-1½ w/min. climb of 300' per NM to 4000 or 3900-3 for climb in visual conditions. **Sea Lane 36**, std. w/min. climb of 270' per NM to 3300 or 3900-3 for climb in visual conditions.

DEPARTURE PROCEDURE: **Sea Lane 14**, climb on heading 140° to 3300 before proceeding on course or for climb in visual conditions: cross Greenville at or above 3800 MSL before proceeding on course. **Sea Lane 18**, climb heading 180° to 2800 before proceeding on course or for climb in visual conditions: cross Greenville at or above 3800 MSL before proceeding on course. **Sea Lane 32**, climb on heading 335° to 4000 before proceeding on course or for climb in visual conditions: cross Greenville at or above 3800 MSL before proceeding on course. **Sea Lane 36**, climb heading 360° to 3600 before proceeding on course or for climb in visual conditions: cross Greenville at or above 3800 MSL before proceeding on course.

NOTE: **Sea Lane 14**, trees beginning 4116' prior to DER, 296' left of centerline, up to 80' AGL/1119' MSL. Trees beginning 3063' prior to DER, 191' right of centerline, up to 80' AGL/1159' MSL. Boats beginning at DER, from 500' left to 500' right of centerline, up to 20' AGL/1048' MSL. Trees beginning 2' from DER, 167' left of centerline, up to 80' AGL/1179' MSL. **Sea Lane 18**, trees beginning 2274' prior to DER, 370' left of centerline, up to 80' AGL/1119' MSL. Boats beginning at DER, from 500' left to 500' right of centerline, up to 20' AGL/1048' MSL. Trees beginning 711' from DER, 621' right of centerline, up to 80' AGL/1179' MSL. Trees beginning 1212' from DER, 783' left of centerline, up to 80' AGL/1139' MSL. **Sea Lane 32**, trees beginning 3390' prior to DER, 191' left of centerline, up to 80' AGL/1159' MSL. Trees beginning 2976' prior to DER, 296' right of centerline, up to 80' AGL/1119' MSL. Boats beginning at DER, from 500' left to 500' right of centerline, up to 20' AGL/1048' MSL. Trees beginning 2328' from DER, 1082' right of centerline, up to 80' AGL/1179' MSL. **Sea Lane 36**, trees beginning 2755' prior to DER, 370' right of centerline, up to 80' AGL/1119' MSL. Trees beginning 571' prior to DER, 290' left of centerline, up to 80' AGL/1119' MSL. Boats beginning at DER, from 500' left to 500' right of centerline, up to 20' AGL/1048' MSL. Trees beginning 694' from DER, 381' left of centerline, up to 80' AGL/1179' MSL. Trees beginning 2440' from DER, 650' right of centerline, up to 80' AGL/1119' MSL.

GROTON (NEW LONDON), CT

GROTON-NEW LONDON (GON)

TAKEOFF MINIMUMS AND (OBSTACLE)

DEPARTURE PROCEDURES

AMDT 8 12040 (FAA)

TAKEOFF MINIMUMS: **Rwy 5**, 300-2 or std. w/min. climb gradient of 260' per NM to 400. **Rwy 15**, 300-1 or std. w/min. climb gradient of 425' per NM to 300. **Rwy 33**, 300-1½ or std. w/min. climb of 380' per NM to 300. DEPARTURE PROCEDURE: **Rwy 33**, climb on GON VOR/DME R-335 to 2000 before proceeding on course. NOTE: **Rwy 23**, bush 570' from DER, 490' right of centerline, 12' AGL/21' MSL. Tree 2770' from DER, 700' left of centerline, 50' AGL/76' MSL. **Rwy 5**, REIL 74' from DER, 151' left of centerline, 3' AGL/9' MSL. Fence beginning 186' from DER, 186' right of centerline, up to 7' AGL/18' MSL. Vehicle on road 215' from DER, 501' left of centerline, 15' AGL/30' MSL. Multiple poles beginning 205' from DER, 474' left of centerline, up to 30' AGL/52' MSL. Multiple trees beginning 416' from DER, right and left of centerline, up to 80' AGL/94' MSL. Multiple trees beginning 6918' from DER, right and left of centerline, up to 80' AGL/286' MSL. **Rwy 15**, bush 54' from DER, 238' right of centerline, 4' AGL/11' MSL. Trees beginning 1703' from DER, right and left of centerline, up to 81' AGL/153' MSL. **Rwy 33**, multiple trees beginning 106' from DER, left and right of centerline, up to 50' AGL/219' MSL. Multiple poles beginning 163' from DER, right and left of centerline, up to 20' AGL/48' MSL. Railroad 201' from DER, 163' left of centerline, 15' AGL/32' MSL. Multiple poles beginning 4279' from DER, 235' left of centerline, up to 100' AGL/207' MSL. Tank 5144' from DER, 926' left of centerline, 88' AGL/225' MSL.

HARTFORD, CT

HARTFORD-BRAINARD (HFD)

TAKEOFF MINIMUMS AND (OBSTACLE)

DEPARTURE PROCEDURES

AMDT 5 10210 (FAA)

TAKEOFF MINIMUMS: **Rwys 11,29**, NA-Environmental. **Rwy 20**, 300-1½ or std. w/min. climb of 217' per NM to 300, alternatively, with standard TAKEOFF minimums and a normal 200'/NM climb gradient, TAKEOFF must occur no later than 1500' prior to DER.

DEPARTURE PROCEDURE: **Rwy 2**, climb heading 024° to 1000 before turning left. **Rwy 20**, climb heading 175° to 1300 before turning right.

NOTE: **Rwy 2**, pipe on obstruction light building, beginning 376' from DER, 593' left of centerline, up to 25' AGL/57' MSL. Bushes beginning 587' from DER, 186' left of centerline, up to 10' AGL/54' MSL. Trees beginning 765' from DER, 59' left of centerline, up to 100' AGL/134' MSL. Trees beginning 57' from DER, 46' right of centerline, up to 100' AGL/125' MSL. Obstruction light on levee 189' from DER, on centerline to 154' right of centerline, up to 22' AGL/45' MSL. **Rwy 20**, levee 56' from DER, 453' left of centerline, up to 24' AGL/42' MSL. Trees and bushes beginning 160' from DER, 118' left of centerline, up to 100' AGL/119' MSL. Obstruction light on dike beginning 493' from DER, 277' left of centerline, up to 27' AGL/45' MSL. Spires 1.12 NM from DER, 403' left of centerline, 150' AGL/195' MSL. Lights beginning 196' from DER, 400' right of centerline, up to 24' AGL/42' MSL. Trees beginning 798' from DER, 28' right of centerline, up to 100' AGL/142' MSL. Dam 885' from DER, 52' left of centerline, 27' AGL/45' MSL.

14317

TAKEOFF MINIMUMS, (OBSTACLE) DEPARTURE PROCEDURES, AND DIVERSE VECTOR AREA (RADAR VECTORS)

TAKEOFF MINIMUMS, (OBSTACLE) DEPARTURE PROCEDURES, AND DIVERSE VECTOR AREA (RADAR VECTORS)

14317

HAVERHILL, NH

DEAN MEMORIAL (5B9)

TAKEOFF MINIMUMS AND (OBSTACLE)
DEPARTURE PROCEDURES

ORIG 07074 (FAA)

TAKEOFF MINIMUMS: **Rwy 1**, std. w/ min. climb of 339' per NM to 2000, or 1800-2 for climb in visual conditions. **Rwy 19**, NA terrain.DEPARTURE PROCEDURE: **Rwy 1**, climbing left turn heading 240° and LEB VOR/DME R-029 to 4800 before proceeding on course. Do not exceed 180 KIAS until established on LEB VOR/DME R-029. For climb in visual conditions: Cross Dean Memorial Airport southwest bound at or above 2200 via LEB VOR/DME R-036 to 5000 before proceeding on course. Do not exceed 180 KIAS until established on LEB VOR/DME R-036.NOTE: **Rwy 1**, multiple buildings beginning 180' from DER, 74' left of centerline, up to 25' AGL/571' MSL. Building 300' from DER, 100' right of centerline, 35' AGL/584' MSL. Vehicles at DER, beginning 500' right of centerline, to 500' left of centerline 15' AGL/596' MSL. Multiple trees beginning 1450' from DER left and right of centerline, up to 100' AGL/599' MSL. Multiple trees beginning 1.3 NM from DER left and right of centerline, up to 100' AGL/819' MSL. Multiple trees and towers beginning 1.7 NM from DER left and right of centerline, up to 200' AGL/919' MSL.

HIGHGATE, VT

FRANKLIN COUNTY STATE (FSO)

TAKEOFF MINIMUMS AND (OBSTACLE)
DEPARTURE PROCEDURES

AMDT 1 11181 (FAA)

TAKEOFF MINIMUMS: **Rwy 19**, 500-2¼ or std. w/min. climb of 316' per NM to 800.DEPARTURE PROCEDURE: **Rwy 19**, climbing right turn heading 240° to 1700 before turning east.NOTE: **Rwy 1**, vehicles on road beginning at DER, 459' left of centerline, up to 15' AGL/234' MSL. Trees beginning 182' from DER, 47' right of centerline, up to 100' AGL/359' MSL. Trees beginning 454' from DER, 20' left of centerline, up to 100' AGL/289' MSL. **Rwy 19**, vehicles on road beginning 1' from DER, 240' right of centerline, up to 15' AGL/240' MSL. Trees beginning 215' from DER, 313' right of centerline, up to 90' AGL/309' MSL. Trees beginning 628' from DER, 660' left of centerline, up to 62' AGL/281' MSL. Pole 688' from DER, 656' left of centerline, 43' AGL/262' MSL. Catenary 1299' from DER, 734' left of centerline, 44' AGL/263' MSL.

HOPEDALE, MA

HOPEDALE INDUSTRIAL PARK (1B6)

TAKEOFF MINIMUMS AND (OBSTACLE)
DEPARTURE PROCEDURES

AMDT 2 95341 (FAA)

TAKEOFF MINIMUMS: **Rwy 18**, 300-1 or std. with a min. climb of 320' per NM to 900. **Rwy 36**, 600-1 or std. with a min. climb of 280' per NM to 1100.DEPARTURE PROCEDURE: **Rwy 18**, climb runway heading to 900 before turning on course. **Rwy 36**, climb runway heading to 1100 before turning on course.

14317

TAKEOFF MINIMUMS, (OBSTACLE) DEPARTURE PROCEDURES, AND DIVERSE VECTOR AREA (RADAR VECTORS)

HOULTON, ME

HOULTON INTL (HUL)

TAKEOFF MINIMUMS AND (OBSTACLE)
DEPARTURE PROCEDURES

AMDT 2 11237 (FAA)

TAKEOFF MINIMUMS: **Rwy 1**, 300-1½ or std. w/min. climb of 429' per NM to 900. **Rwy 5**, 300-1½ or std. with min. climb of 340' per NM to 900. **Rwy 19**, 500-3. **Rwy 23**, 400-1½ or std. w/min. climb of 389' per NM to 1000. DEPARTURE PROCEDURE: **Rwy 23**, Climb heading 229° to 1000 before turning left.NOTE: **Rwy 1**, trees beginning 109' from DER, 170' left of centerline, up to 100' AGL/ 739' MSL. Tree 141' from DER, 241' right of centerline, 100' AGL/ 579' MSL. Vehicle on roadway 520' from DER, 7' left of centerline, 15' AGL/ 494' MSL. **Rwy 5**, trees beginning 144' from DER, 155' left of centerline, up to 100' AGL/ 599' MSL. Trees beginning 432' from DER, 557' right of centerline, up to 100' AGL/ 779' MSL. **Rwy 19**, trees beginning 2331' from DER, 610' left of centerline, up to 100' AGL/ 939' MSL. Trees beginning 2580' from DER, 414' right of centerline, up to 100' AGL/ 949' MSL. **Rwy 23**, trees beginning 427' from DER, 411' left of centerline, up to 100' AGL/ 829' MSL. Trees beginning 52' from DER, 309' right of centerline, up to 100' AGL/ 619' MSL.

HYANNIS, MA

BARNSTABLE MUNI-BOARDMAN/
PALANDO FIELD (HYA)TAKEOFF MINIMUMS AND (OBSTACLE)
DEPARTURE PROCEDURES

AMDT 3A 08269 (FAA)

TAKEOFF MINIMUMS: **Rwy 33**, 300-1 or std. with a min. climb of 354' per NM to 300.DEPARTURE PROCEDURE: **Rwys 24,33**, climb runway heading to 700 before proceeding on course.NOTE: **Rwy 33**, pole 3961' from DER, 1531' right of centerline, 97' AGL/235' MSL.

JAFFREY, NH

JAFFREY AIRPORT-SILVER RANCH (AFN)

TAKEOFF MINIMUMS AND (OBSTACLE)
DEPARTURE PROCEDURES

AMDT 1 14149 (FAA)

TAKEOFF MINIMUMS: **Rwys 16, 34**, 1000-2½ for climb in visual conditions.DEPARTURE PROCEDURE: **Rwys 16, 34**, for climb in visual conditions: cross Jaffrey airport-Silver Ranch at or above 1900, then via the GDM VOR/DME R-023 to GDM. When executing VCOA, notify ATC prior to departure.NOTE: **Rwy 16**, trees beginning 126' from DER, 140' left of centerline, up to 100' AGL/1209' MSL. Trees beginning 189' from DER, 120' right of centerline, up to 100' AGL/1520' MSL. **Rwy 34**, trees beginning 8263' from DER, 613' left of centerline, up to 100' AGL/1441' MSL. Trees beginning 13' from DER, 69' right of centerline, up to 100' AGL/1322' MSL.

08 JAN 2015 to 05 FEB 2015

08 JAN 2015 to 05 FEB 2015

TAKEOFF MINIMUMS, (OBSTACLE) DEPARTURE PROCEDURES, AND DIVERSE VECTOR AREA (RADAR VECTORS)

14317

KEENE, NH

DILLANT-HOPKINS (EEN)

TAKEOFF MINIMUMS AND (OBSTACLE)
DEPARTURE PROCEDURES
AMDT 5 97282 (FAA)

TAKEOFF MINIMUMS: **Rwy 2**, 1200-2. **Rwy 14**, 2200-2 or std. with a min. climb of 450' per NM to 2500. **Rwy 20**, 1000-2 or std. with a min. climb of 320' per NM to 1700. **Rwy 32**, 1600-2.

DEPARTURE PROCEDURE: **Rwy 2**, climb runway heading to 2100, then climbing left turn to assigned altitude direct EEN VORTAC before proceeding on course. **Rwy 14**, climb runway heading to 2500, then climbing right turn to assigned altitude direct EEN VORTAC before proceeding on course. **Rwy 20**, climb direct EEN VORTAC until passing 3000, if not at 3000 or above at EEN VORTAC climb in EEN holding pattern; (NE, right turns, 215° inbound) before proceeding on course. **Rwy 32**, climbing right turn heading 350° to 2100, then climbing left turn to assigned altitude direct EEN VORTAC before proceeding on course.

NOTE: **Rwy 2**, 81' AGL trees 400' from DER and 500' right of centerline. **Rwy 32**, 89' AGL trees 800' from DER and 600' right of centerline.

LACONIA, NH

LACONIA MUNI (LCI)

TAKEOFF MINIMUMS AND (OBSTACLE)
DEPARTURE PROCEDURES
AMDT 4 09127 (FAA)

TAKEOFF MINIMUMS: **Rwy 8**, 600-1¼ or std. w/ min. climb of 652' per NM to 1300. **Rwy 26**, 300-1 or std. w/ min. climb of 421' per NM to 900.

DEPARTURE PROCEDURE: **Rwy 8**, climb to 2500 via heading 079° and ENE VORTAC R-315 inbound to 3500 before proceeding on course. **Rwy 26**, climb heading 264° to 2500 before proceeding on course.

NOTE: **Rwy 8**, trees, terrain, and pole beginning 65' from DER, 20' right of centerline, up to 50' AGL/1112' MSL. Trees and terrain beginning 93' from DER, 5' left of centerline, up to 71' AGL/590' MSL. **Rwy 26**, trees and antenna on tower beginning 123' from DER, 42' left of centerline, up to 84' AGL/743' MSL. Trees beginning 2145' from DER, 626' right of centerline, up to 93' AGL/672' MSL.

LAWRENCE, MA

LAWRENCE MUNI (LWM)

TAKEOFF MINIMUMS AND (OBSTACLE)
DEPARTURE PROCEDURES
AMDT 4 11069 (FAA)

TAKEOFF MINIMUMS: **Rwy 5**, 300-1½ or std. with a min. climb of 419' per NM to 500. **Rwy 14**, 300-1 or std. with a min. climb of 601' per NM to 600. **Rwy 23**, 300-1 or std. with a min. climb of 334' per NM to 400.

DEPARTURE PROCEDURE: **Rwy 5**, Climb heading 053° to 1100 before turning left.
NOTE: **Rwy 5**, trees beginning 288' from DER, 44' left of centerline, up to 86' AGL/282' MSL. Pole and trees beginning 544' from DER, 403' right of centerline, up to 75' AGL/281' MSL. Trees 3731' from DER, 1052' right of centerline, up to 86' AGL/331' MSL. Trees 1.2 NM from DER, 41' right of centerline, up to 89' AGL/354' MSL. **Rwy 14**, bush, pole, and trees beginning 150' from DER, 9' left of centerline, up to 59' AGL/186' MSL. Bush, buildings, poles, and trees beginning 102' from DER, 19' right of centerline, up to 94' AGL/290' MSL. Rod on pole 3473' from DER, 1391' right of centerline, 73' AGL/ 417' MSL. **Rwy 23**, bush and trees beginning 176' from DER, 464' left of centerline, up to 53' AGL/160' MSL. Bush 117' from DER, 183' right of centerline, up to 13' AGL/140' MSL. Stack 3768' from DER, 1310' right of centerline, 260' AGL/295' MSL. **Rwy 32**, trees 159' from DER, 198' left of centerline, up to 54' AGL/141' MSL. Trees beginning 120' from DER, 156' right of centerline, up to 60' AGL/177' MSL.

LEBANON, NH

LEBANON MUNI (LEB)

TAKEOFF MINIMUMS AND (OBSTACLE)
DEPARTURE PROCEDURES
AMDT 2 09015 (FAA)

TAKEOFF MINIMUMS: **Rwy 7**, 300-1 w/ min. climb of 380' per NM to 3100, or 2000-3 for climb in visual conditions. **Rwy 18**, std. w/ min. climb of 380' per NM to 3800, or 2000-3 for climb in visual conditions. **Rwy 25**, std. w/ min. climb of 380' per NM to 3100, or 2000 - 3 for climb in visual conditions. **Rwy 36**, std. w/ min. climb of 350' per NM to 1800, or 2000-3 for climb in visual conditions.

DEPARTURE PROCEDURE: **Rwy 7**, climb heading 075° to 1900 before proceeding on course. **Rwy 18**, climb heading 184° to 3100 before proceeding on course. **Rwy 25**, climb heading 255° to 3100 before proceeding on course. **Rwy 36**, climb heading 004° to 1800 before proceeding on course.
Rwys 7, 18, 25, 36, - for climb in visual conditions: cross Lebanon Muni airport at or above 2500 before proceeding on course.

NOTE: **Rwy 7**, numerous trees beginning 104' from DER, 255' right of centerline up to 112' AGL/752' MSL. Pole 505' from DER, 391' right of centerline, 72' AGL/672' MSL. Bush 426' from DER, 259' right of centerline, 9' AGL/589' MSL. Multiple trees beginning 13' from DER, 209' left of centerline, up to 100' AGL/1100' MSL. **Rwy 18**, numerous trees, and obstruction light poles beginning 288' from DER, 107' right of centerline, up to 100' AGL/784' MSL. Numerous trees and obstruction light poles beginning 433' from DER, 206' left of centerline, up to 82' AGL/962' MSL. Bush 216' from DER, 471' right of centerline, 16' AGL/619' MSL. **Rwy 25**, multiple trees beginning 340' from DER, 400' left of centerline, up to 91' AGL/871' MSL. Tree 382' from departure end of runway, 502' right of centerline, 91' AGL/581' MSL. **Rwy 36**, multiple trees beginning 243' from DER, 355' left of centerline, up to 81' AGL/581' MSL. Pole 155' from DER, 505' left of centerline, 30' AGL/590' MSL. Tree 357' from DER, 511' right of centerline, 83' AGL/583' MSL.

14317

TAKEOFF MINIMUMS, (OBSTACLE) DEPARTURE PROCEDURES, AND DIVERSE VECTOR AREA (RADAR VECTORS)

TAKEOFF MINIMUMS, (OBSTACLE) DEPARTURE PROCEDURES, AND DIVERSE VECTOR AREA (RADAR VECTORS)

14317

LINCOLN, ME

LINCOLN RGNL (LRG)

TAKEOFF MINIMUMS AND (OBSTACLE)
DEPARTURE PROCEDURES
AMDT 3 10210 (FAA)

TAKEOFF MINIMUMS: **Rwy 17**, 700-1½ with a minimum climb of 389' per NM to 1100 or 1100-2½ for climb in visual conditions. **Rwy 35**, 300-1 or std. w/ min. climb of 453' per NM to 500.

DEPARTURE PROCEDURE: **Rwy 17**, climb heading 181° to 1100 before proceeding on course. For climb in visual conditions, cross Lincoln Rgnl airport at or above 1200 MSL before proceeding on course. **Rwy 35**, climb heading 346° to 700 before proceeding on course.

NOTE: **Rwy 17**, trees beginning 123' from DER, 296' left of centerline, up to 80' AGL/299' MSL. Trees beginning 447' from DER, 126' right of centerline, up to 80' AGL/289' MSL. Towers beginning 7448' from DER, 2310' left of centerline, up to 191' AGL/869' MSL. **Rwy 35**' trees beginning 4' from DER, 284' left of centerline, up to 80' AGL/359' MSL. Trees beginning 252' from DER, 196' right of centerline, up to 80' AGL/369' MSL.

LYNDONVILLE, VT

CALEDONIA COUNTY (CDA)

TAKEOFF MINIMUMS AND (OBSTACLE)
DEPARTURE PROCEDURES
AMDT 5 07018 (FAA)

TAKEOFF MINIMUMS: **Rwy 2**, 500-2.
DEPARTURE PROCEDURE: **Rwy 2**, climb heading 024° to 2500, then climbing right turn via heading 190° and LLX bearing 040° to LLX NDB, then via LLX NDB 220° bearing to 4200 before proceeding on course.

Rwy 20, climb heading 190°, then climbing left turn on 165° bearing from LLX NDB to 3400 before proceeding on course.

NOTES: **Rwy 2**, multiple trees beginning 795' from DER, 361' left of centerline, up to 80' AGL/1536' MSL. Terrain 184' from DER, 533' left of centerline, 1200' MSL. Terrain 346' from DER, 578' left of centerline, 1220' MSL. Terrain 550' from DER, 638' left of centerline, 1240' MSL. **Rwy 20**, multiple trees beginning 2' from DER, 174' right of centerline, up to 80' AGL/1261' MSL. Terrain 470' from DER, 75' left of centerline, 1200' MSL.

MACHIAS, ME

MACHIAS VALLEY (MVM)

TAKEOFF MINIMUMS AND (OBSTACLE)
DEPARTURE PROCEDURES
AMDT 2 13234 (FAA)

TAKEOFF MINIMUMS: **Rwy 18**, 400-2. **Rwy 36**, 400-3

NOTE: **Rwy 18**, multiple buildings, vehicles on road beginning 720' from DER, left and right of centerline, up to 25' AGL/124' MSL. Terrain and trees beginning 65' from DER, left and right of centerline, up to 100' AGL/319' MSL. **Rwy 36**, multiple buildings, vehicles on road beginning 2453' from DER, left and right of centerline, up to 25' AGL/204' MSL. Trees beginning 105' from DER, left and right of centerline, up to 100' AGL/459' MSL. Tower 7922' from DER, 883' left of centerline, up to 85' AGL/402' MSL.

MANCHESTER, NH

MANCHESTER (MHT)

TAKEOFF MINIMUMS AND (OBSTACLE)
DEPARTURE PROCEDURES
AMDT 10 12152 (FAA)

TAKEOFF MINIMUMS: **Rwy 17**, 300-1¼ or std. w/ min. climb of 277' per NM to 600. **Rwy 35**, 300-1½ or std. w/ min. climb of 253' per NM to 500.

DEPARTURE PROCEDURE: **Rwy 6**, climb heading 058° to 1000 before turning right. **Rwy 24**, climb heading 245° to 900 before proceeding on course. **Rwy 35**, climb heading 353° to 1300 before proceeding on course.

NOTE: **Rwy 6**, pole and trees beginning 67' from DER, 162' left of centerline, up to 107' AGL/313' MSL. Fence and trees beginning 6' from DER, 90' right of centerline, up to 72' AGL/272' MSL. **Rwy 17**, buildings and trees beginning 1792' from DER, 54' left of centerline, up to 107' AGL/418' MSL. Transmission line tower, poles, buildings, and trees beginning 761' from DER, 4' right of centerline, up to 90' AGL/418' MSL. Pole 5563' from DER, 92' left of centerline, 57' AGL/457' MSL. **Rwy 24**, pole and trees beginning 221' from DER, 243' left of centerline, up to 119' AGL/293' MSL. Trees beginning 2556' from DER, 1041' right of centerline, up to 101' AGL/313' MSL. **Rwy 35**, pole and trees beginning 891' from DER, 527' left of centerline, up to 76' AGL/320' MSL. Poles and trees beginning 719' from DER, 558' right of centerline, up to 44' AGL/281' MSL. Trees 5933' from DER, 1950' left of centerline, up to 76' AGL/409' MSL. Trees 1 NM from DER, 1581' left of centerline, up to 60' AGL/414' MSL. Trees 1.2 NM from DER, 1946' left of centerline, up to 85' AGL/407' MSL.

MANSFIELD, MA

MANSFIELD MUNI (1B9)

TAKEOFF MINIMUMS AND (OBSTACLE)
DEPARTURE PROCEDURES
AMDT 2A 13178 (FAA)

TAKEOFF MINIMUMS: **Rwys 4,22**, NA - VFR only.

NOTE: **Rwy 14**, trees beginning 89' from DER, 454' left of centerline, up to 65' AGL/182' MSL. Trees beginning 68' from DER, 143' left of centerline, up to 32' AGL/149' MSL. Trees beginning 82' from DER, 98' right of centerline, up to 31' AGL/148' MSL. Trees beginning 1067' from DER, 14' left of centerline, up to 67' AGL/184' MSL. Trees beginning 846' from DER, 8' right of centerline, up to 101' AGL/208' MSL. **Rwy 32**, sign 56' from DER, 164' right of centerline, 2' AGL/124' MSL. Trees beginning 52' from DER, 187' left of centerline, up to 54' AGL/173' MSL. Trees beginning 742' from DER, 17' left of centerline, up to 97' AGL/224' MSL. Trees beginning 638' from DER, 10' right of centerline, up to 103' AGL/230' MSL.

14317

TAKEOFF MINIMUMS, (OBSTACLE) DEPARTURE PROCEDURES, AND DIVERSE VECTOR AREA (RADAR VECTORS)

TAKEOFF MINIMUMS, (OBSTACLE) DEPARTURE PROCEDURES, AND DIVERSE VECTOR AREA (RADAR VECTORS)

14317

MARSHFIELD, MA

MARSHFIELD MUNI-GEORGE HARLOW
FIELD (GHG)

TAKEOFF MINIMUMS AND (OBSTACLE)
DEPARTURE PROCEDURES

AMDT 1 14317 (FAA)

TAKEOFF MINIMUMS: **Rwy 24**, 200-1¼ or std. w/min. climb of 205' per NM to 300, or alternatively, with standard takeoff minimums and a normal 200'/NM climb gradient, takeoff must occur no later than 1100' prior to DER.

DEPARTURE PROCEDURE: **Rwy 24**, climb heading 242° to 500 before turning north.

NOTE: **Rwy 6**, trees and bushes beginning 21' from DER, left and right of centerline, up to 51' AGL/51' MSL. Trees, poles and buildings beginning 1001' from DER, left and right of centerline, up to 59' AGL/68' MSL. Boat mast beginning 2734' from DER, left and right of centerline, up to 125' AGL/125' MSL. **Rwy 24**, trees beginning 15' from DER, 84' left of centerline, up to 74' AGL/74' MSL. Tree 474' from DER, 624' right of centerline, up to 71' AGL/77' MSL. Trees beginning 1371' from DER, left and right of centerline, up to 88' AGL/92' MSL. Trees beginning 4463' from DER, 1298' left of centerline, up to 88' AGL/153' MSL. Tree 6031' from DER, 1306' left of centerline, up to 89' AGL/158' MSL.

MERIDEN, CT

MERIDEN MARKHAM MUNI (MMK)

TAKEOFF MINIMUMS AND (OBSTACLE)
DEPARTURE PROCEDURES

AMDT 3 07046 (FAA)

TAKEOFF MINIMUMS: **Rwy 18**, 500-3 or std. w/ min. climb of 235' per NM to 1100. **Rwy 36**, std. w/ min. climb of 420' per NM to 1600, or 1500-2½ for climb in visual conditions.

DEPARTURE PROCEDURE: **Rwy 18**, climb heading 176° to 1100 before proceeding on course. **Rwy 36**, climbing left turn heading 320° to 1600 before proceeding on course, or for climb in visual conditions, cross Meriden Markham Municipal at or above 1500 before proceeding on course.

NOTE: **Rwy 18**, 200' AAO 1.9 NM from DER, 3441' left of centerline, 200' AGL/417' MSL. 200' AAO 1.9 NM from DER, 3563' left of centerline, 200' AGL/417' MSL. Terrain 50' from DER, 440' right of centerline, 109' MSL. 200' AAO 1.9 NM from DER, 3346' left of centerline, 200' AGL/410' MSL. Terrain 122' from DER, 223' right of centerline, 105' MSL. 200' AAO 2.5 NM from DER, 1984' left of centerline, 200' AGL/483' MSL. 200' AAO 2.5 NM from DER, 1889' left of centerline, 200' AGL/489' MSL. Multiple power lines beginning 500' from DER, 216' right of centerline, up to 52' AGL/172' MSL. Multiple power lines beginning 781' from DER, 192' left of centerline, up to 52' AGL/150' MSL. **Rwy 36**, multiple towers 3 NM from DER, 2284' right of centerline, up to 1117' AGL/1220' MSL. Multiple terrain/AAO 2.5 NM from DER, 3748' right of centerline, up to 200' AGL/903' MSL.

MILLINOCKET, ME

MILLINOCKET MUNI (MLT)

TAKEOFF MINIMUMS AND (OBSTACLE)
DEPARTURE PROCEDURES

AMDT 3 10042 (FAA)

TAKEOFF MINIMUMS: **Rwy 29**, 400-3 or std. w/ min. climb of 535' per NM to 1000.

Rwy 34, 400-2½ or std. w/ min. climb of 351' per NM to 900.

DEPARTURE PROCEDURE: **Rwy 11**, climb via heading 107° and MLT R-330 to MLT VOR/DME thence...**Rwy 16**, climb via heading 156° and MLT R-309 to MLT VOR/DME thence...**Rwy 29**, climb via heading 287° to 1000 then climbing left turn via heading 152° and MLT R-290 to MLT VOR/DME thence...**Rwy 34**, climbing right turn via heading 156° and MLT R-344 to MLT VOR/DME thence...

...continue climb in MLT VOR/DME holding pattern (Southeast, Right Turns, 319° inbound) to cross MLT VOR/DME at or above 3000 before proceeding on course.

NOTE: **Rwy 11**, bushes beginning 82' from DER, 25' left of centerline, up to 16' AGL/406' MSL. Trees beginning 49' from DER, 258' left of centerline, up to 100' AGL/489' MSL. Trees beginning 52' from DER, 247' right of centerline, up to 100' AGL/489' MSL. Trees beginning 1685' from DER, left and right of centerline, up to 100' AGL/519' MSL. **Rwy 16**, vehicle 311' from DER, left and right of centerline, 15' AGL/393' MSL. Trees beginning 84' from DER, 272' left of centerline, up to 64' AGL/444' MSL. Trees beginning 20' from DER, 247' right of centerline, up to 66' AGL/436' MSL. Trees beginning 791' from DER, left and right of centerline, up to 100' AGL/489' MSL. **Rwy 29**, antenna, towers, power lines, and stacks beginning 294' from DER, 250' left of centerline, up to 302' AGL/782' MSL. Obstacle light on localizer, antenna, and power lines beginning 301' from DER, 1' right of centerline, up to 114' AGL/584' MSL. Trees beginning 300' from DER, 395' left of centerline, up to 62' AGL/452' MSL. Trees beginning 705' from DER, 237' right of centerline, up to 78' AGL/678' MSL. **Rwy 34**, trees beginning 28' from DER, 249' right of centerline, up to 113' AGL/729' MSL. Trees beginning 261' from DER, 317' left of centerline, up to 67' AGL/457' MSL. Tower 1162' from DER, 470' right of centerline, 310' AGL/708' MSL.

MONTAGUE, MA

TURNERS FALLS (0B5)

TAKEOFF MINIMUMS AND (OBSTACLE)
DEPARTURE PROCEDURES

AMDT 1 97002 (FAA)

TAKEOFF MINIMUMS: **Rwy 16**, 1200-1. **Rwy 34**, 1300-1 or std. with a min. climb rate of 370' per NM to 1900.

14317

TAKEOFF MINIMUMS, (OBSTACLE) DEPARTURE PROCEDURES, AND DIVERSE VECTOR AREA (RADAR VECTORS)

TAKEOFF MINIMUMS, (OBSTACLE) DEPARTURE PROCEDURES, AND DIVERSE VECTOR AREA (RADAR VECTORS)

14317

MORRISVILLE, VT

MORRISVILLE-STOWE STATE (MVL)
TAKEOFF MINIMUMS AND (OBSTACLE)
DEPARTURE PROCEDURES
AMDT 3 13066 (FAA)

TAKEOFF MINIMUMS: **Rwy 1**, std. w/min. climb of 358' per NM to 4300 or 3500-3 for climb in visual conditions. **Rwy 19**, 900-3 w/min. climb of 500' per NM to 5000 or 3500-3 for climb in visual conditions.

DEPARTURE PROCEDURE: **Rwy 1**, climb heading 029° to 4300 before proceeding on course. For climb in visual conditions: cross Morrisville-Stowe State airport at or above 4100' MSL before proceeding on course. When executing VCOA, notify ATC prior to departure. **Rwy 19**, climbing right turn heading 040° to 5000 before proceeding on course. For climb in visual conditions: cross Morrisville-Stowe State airport at or above 4100' MSL before proceeding on course. When executing VCOA, notify ATC prior to departure.

NOTE: **Rwy 1**, multiple trees beginning 79' from DER, 40' right of centerline, up to 38' AGL/746' MSL. Numerous trees beginning 1331' from DER, 160' right of centerline, up to 74' AGL/812' MSL. Multiple buildings, trees, pole, and silo beginning 413' from DER, 595' left of centerline, up to 91' AGL/819' MSL. Numerous trees beginning 1829' from DER, 257' left of centerline, up to 96' AGL/824' MSL. **Rwy 19**, numerous trees beginning 11' from DER, 364' right of centerline, up to 80' AGL/794' MSL. Multiple buildings beginning 210' from DER, 469' right of centerline, up to 84' AGL/792' MSL. Numerous trees and buildings beginning 677' from DER, 19' right of centerline, up to 89' AGL/817' MSL. Numerous trees and poles beginning 1309' from DER, 73' right of centerline, up to 98' AGL/846' MSL. Numerous trees beginning 5890' from DER, 1940' right of centerline, up to 113' AGL/900' MSL. Multiple trees 187' from DER, 144' left of centerline, up to 54' AGL/762' MSL. Numerous trees, poles, and building beginning 1218' from DER, 5' left of centerline, up to 102' AGL/850' MSL. Numerous trees beginning 1.5 NM from DER, 1979' left of centerline, up to 95' AGL/1175' MSL.

NANTUCKET, MA

NANTUCKET MEMORIAL (ACK)
TAKEOFF MINIMUMS AND (OBSTACLE)
DEPARTURE PROCEDURES
AMDT 3 98281 (FAA)

TAKEOFF MINIMUMS: **Rwy 12**, 700-1 or std. with a min. climb of 330' per NM to 800.

DEPARTURE PROCEDURE: **Rwys 6, 12, 15, 24, 30, 33**, climb runway heading to 800 before proceeding on course.

NOTE: **Rwy 33**, 70' AGL ant. on building 954' from DER, 585' right of centerline.

NASHUA, NH

BOIRE FIELD (ASH)
TAKEOFF MINIMUMS AND (OBSTACLE)
DEPARTURE PROCEDURES
AMDT 4 13178 (FAA)

DEPARTURE PROCEDURE: **Rwy 32**, climb heading 319° to 900 before turning left.

NOTE: **Rwy 14**, trees beginning 47' from DER, left and right of centerline, up to 80' AGL/262' MSL. Pole 707' from DER, 673' right of centerline, up to 37' AGL/221' MSL. Poles beginning 853' from DER, 170' left of centerline, up to 28' AGL/217' MSL. Pole 989' from DER, 560' right of centerline, up to 53' AGL/240' MSL. Trees beginning 1030' from DER, 62' right of centerline, up to 80' AGL/270' MSL. Trees beginning 1057' from DER, 6' left of centerline, up to 112' AGL/283' MSL. Pole 1465' from DER, 656' right of centerline, up to 68' AGL/253' MSL. Trees beginning 2253' from DER, 143' left of centerline, up to 82' AGL/287' MSL. Trees beginning 2405' from DER, 205' right of centerline, up to 113' AGL/289' MSL. **Rwy 32**, trees beginning 20' from DER, 99' right of centerline, up to 96' AGL/295' MSL. Trees beginning 882' from DER, on centerline, up to 80' AGL/259' MSL. Trees beginning 2333' from DER, 107' left of centerline, up to 97' AGL/300' MSL. Tree 3562' from DER, 1324' right of centerline, up to 80' AGL/312' MSL.

NEW BEDFORD, MA

NEW BEDFORD RGNL (EWB)
TAKEOFF MINIMUMS AND (OBSTACLE)
DEPARTURE PROCEDURES
AMDT 7 99028 (FAA)

TAKEOFF MINIMUMS: **Rwy 14**, 300-1 or std. with a min. climb of 280' per NM to 300. **Rwy 32**, 300-1 or std. with a min. climb of 270' per NM to 300.

NEW HAVEN, CT

TWEED-NEW HAVEN (HVN)
TAKEOFF MINIMUMS AND (OBSTACLE)
DEPARTURE PROCEDURES
AMDT 6 12012 (FAA)

TAKEOFF MINIMUMS: **Rwy 2**, 300-1 w/min. climb of 340' per NM to 400. **Rwy 32**, 400-1½ or std. w/min. climb of 465' per NM to 600.

DEPARTURE PROCEDURE: **Rwy 2**, climb heading 016° to 1900 before turning left. **Rwy 32**, climb heading 324° to 1500 before turning right.

NOTE: **Rwy 2**, transmission line towers beginning 846' from DER, 356' left of centerline, up to 35' AGL/65' MSL. Building 124' from DER, 525' right of centerline, 53' AGL/64' MSL. Trees 1276' from DER, 817' left of centerline, up to 80' AGL/239' MSL. Trees 3755' from DER, 1494' left of centerline, up to 80' AGL/289' MSL. **Rwy 14**, terrain, buildings, and poles beginning 777' from DER, 5' left of centerline, up to 31' AGL/69' MSL. Terrain, vehicles on road, tower, buildings, and poles beginning 429' from DER, 143' right of centerline, up to 58' AGL/94' MSL. **Rwy 20**, pole 68' from DER, 498' right of centerline, 16' AGL/42' MSL. **Rwy 32**, pole and trees beginning 1121' from DER, 55' left of centerline, up to 80' AGL/149' MSL. Control tower, poles, and trees beginning 617' from DER, 139' right of centerline, up to 80' AGL/149' MSL. Trees 2777' from DER, 1143' right of centerline, up to 80' AGL/169' MSL. Stack 1.1 NM from DER, 2227' right of centerline, 394' AGL/404' MSL.

14317

TAKEOFF MINIMUMS, (OBSTACLE) DEPARTURE PROCEDURES, AND DIVERSE VECTOR AREA (RADAR VECTORS)

TAKEOFF MINIMUMS, (OBSTACLE) DEPARTURE PROCEDURES, AND DIVERSE VECTOR AREA (RADAR VECTORS)

14317

NEWPORT, RI

NEWPORT STATE (UUU)
TAKEOFF MINIMUMS AND (OBSTACLE)
DEPARTURE PROCEDURES
AMDT 3 07354 (FAA)

TAKEOFF MINIMUMS: **Rwy 4**, 300-2¼ or std. with a min. climb of 230' per NM to 600, or alternatively, with standard takeoff minimums and a normal 200'/NM climb gradient, takeoff must occur no later than 2100' prior to DER. **Rwy 16**, 200-1 or std. w/ min. climb of 430' per NM to 400.

DEPARTURE PROCEDURE: **Rwy 4**, climb heading 039° to 1200 before proceeding on course.

NOTE: **Rwy 4**, trees beginning 1.7 NM from DER, 916' right of centerline, up to 100' AGL/459' MSL. **Rwy 16**, tower 3782' from DER, 666' right of centerline, 100' AGL/285' MSL, tower 4203' from DER, 1100' right of centerline, 132' AGL/310' MSL. **Rwy 34**, terrain 102' from DER, 424' right of centerline, 159' MSL. Vehicle on road 726' from DER, 602' right of centerline.

NEWPORT, VT

NEWPORT STATE (EFK)
TAKEOFF MINIMUMS AND (OBSTACLE)
DEPARTURE PROCEDURES
AMDT 3 11153 (FAA)

TAKEOFF MINIMUMS: **Rwy 18**, std. w/min. climb of 470' per NM to 2500 or 300-1 with min. climb of 350' per NM to 3000 or 2300-3 for climb in visual conditions. **Rwy 23**, std. w/min. climb of 320' per NM to 3200 or 2300-3 for climb in visual conditions.

Rwy 36, std. w/min. climb of 320' per NM to 3300 or 2300-3 for climb in visual conditions.

DEPARTURE PROCEDURE: **Rwy 5**, climb heading 047° to 2200 before proceeding on course. **Rwy 18**, climb heading 177° to 3000 before proceeding on course or for climb in visual conditions: cross Newport State Airport at or above 3100 before proceeding on course. **Rwy 23**, climb heading 227° to 3000 before proceeding on course or for climb in visual conditions: cross Newport State Airport at or above 3100 before proceeding on course. **Rwy 36**, climb heading 357° to 3300 before proceeding on course or for climb in visual conditions: cross Newport State Airport at or above 3100 before proceeding on course.

NOTE: **Rwy 5**, vehicles on access road beginning 168' from DER, 232' left of centerline, up to 10' AGL/954' MSL. Vehicles on road beginning 216' from DER, 530' right of centerline, up to 15' AGL/940' MSL. Poles beginning 249' from DER, 85' right of centerline, up to 43' AGL/952' MSL. **Rwy 18**, trees beginning at DER, left and right of centerline, up to 100' AGL/1103' MSL. Trees beginning 1.4 NM from DER, 2704' right of centerline, up to 100' AGL/1142' MSL. **Rwy 23**, trees beginning at DER, left and right of centerline, up to 100' AGL/1024' MSL. Rising terrain beginning 6.3 NM from DER, 1.8 NM right of centerline, up to 2381' MSL. **Rwy 36**, trees beginning 1897' from DER, 613' left of centerline, up to 100' AGL/1044' MSL. Trees beginning 2962' from DER, 377' right of centerline, up to 100' AGL/1044' MSL. Trees beginning 5850' from DER, 2049' left of centerline, up to 100' AGL/1123' MSL. Rising terrain beginning 3.3 NM from DER, 3031' left of centerline, up to 1515' MSL.

NORRIDGEWOCK, ME

CENTRAL MAINE AIRPORT OF
NORRIDGEWOCK (OWK)
TAKEOFF MINIMUMS AND (OBSTACLE)
DEPARTURE PROCEDURES
AMDT 4 14149 (FAA)

TAKEOFF MINIMUMS: **Rwy 3**, 300-1½ or std. w/min. climb of 210' per NM to 500, or alternatively, with standard takeoff minimums and a normal 200' per NM climb gradient, takeoff must occur no later than 1300' prior to DER. **Rwy 15**, std. w/min. climb of 235' per NM to 1100, or 1400-2½ for climb in visual conditions. **Rwy 21**, std. w/min. climb of 285' per NM to 1000, or 1400-2½ for climb in visual conditions.

DEPARTURE PROCEDURE: **Rwy 3**, climb heading 028° to 1200 before turning left. **Rwy 15**, climb heading 148° to 1100 before proceeding on course or for climb in visual conditions: cross Central Maine Airport of Norridgewock at or above 1500 before proceeding on course. When executing VCOA, notify ATC prior to departure. **Rwy 21**, climb heading 208° to 1000 before proceeding on course or for climb in visual conditions: cross Central Maine Airport of Norridgewock at or above 1500 before proceeding on course. When executing VCOA, notify ATC prior to departure. **Rwy 33**, climbing right turn to 1900 direct AUG VOR/DME before proceeding on course.

NOTE: **Rwy 3**, trees beginning 3' from DER, 196' right of centerline, up to 100' AGL/439' MSL. Trees beginning 139' from DER, 487' left of centerline, up to 100' AGL/367' MSL. **Rwy 15**, trees beginning 248' from DER, 559' right of centerline, up to 100' AGL/349' MSL. Trees beginning 477' from DER, 295' left of centerline, up to 100' AGL/369' MSL. **Rwy 21**, trees beginning 15' from DER, 108' right of centerline, up to 100' AGL/399' MSL. Trees beginning 523' from DER, 608' left of centerline, up to 100' AGL/409' MSL. **Rwy 33**, trees beginning 4' from DER, 21' left of centerline, up to 100' AGL/359' MSL. Trees beginning 264' from DER, 4' right of centerline, up to 100' AGL/379' MSL.

NORTH KINGSTOWN, RI

QUONSET STATE (OQU)
TAKEOFF MINIMUMS AND (OBSTACLE)
DEPARTURE PROCEDURES
AMDT 1 13010 (FAA)

TAKEOFF MINIMUMS: **Rwy 5**, 300-1 or std w/min. climb of 402' per NM to 300. **Rwy 16**, 300-1 or std w/min. climb of 281' per NM to 300.

NOTE: **Rwy 5**, rising terrain 63' from DER, left to right of centerline, up to 33' MSL. Ships beginning at DER, 220' right of centerline, up to 185' MSL. **Rwy 16**, rising terrain 22' from DER, left to right of centerline, up to 27' MSL. Ships beginning 71' from DER, 543' left of centerline, up to 185' MSL. **Rwy 23**, rising terrain 101' from DER, left to right of centerline, up to 33' MSL. Vehicles beginning 393' from DER, 4' left of centerline, 15' AGL/24' MSL. Trains beginning 398' from DER, 138' left of centerline, 23' AGL/31' MSL. Crane 1826' from DER, 924' right of centerline, 106' AGL/112' MSL. Ships beginning 415' from DER, 521' left of centerline, up to 185' MSL. **Rwy 34**, trees beginning 1073' from DER, 697' left of centerline, up to 80' AGL/112' MSL.

14317

TAKEOFF MINIMUMS, (OBSTACLE) DEPARTURE PROCEDURES, AND DIVERSE VECTOR AREA (RADAR VECTORS)

**TAKEOFF MINIMUMS, (OBSTACLE) DEPARTURE PROCEDURES, AND
DIVERSE VECTOR AREA (RADAR VECTORS)**

14317

NORTHAMPTON, MA**NORTHAMPTON (7B2)**

TAKEOFF MINIMUMS AND (OBSTACLE)
DEPARTURE PROCEDURES
AMDT 4 11013 (FAA)

TAKEOFF MINIMUMS: **Rwy 14**, 1500-2½ for climb in visual conditions. **Rwy 32**, std. w/ min. climb of 286' per NM to 2000.

DEPARTURE PROCEDURE: **Rwy 14**, for climb in visual conditions: cross Northampton Airport at or above 1500 before proceeding on course. **Rwy 32**, climb heading 323° to 2000 before proceeding on course.

NOTE: **Rwy 14**, vehicle on road 5' from DER, 178' right of centerline, up to 17' AGL/136' MSL. Vehicle on road 35' from DER, 143' left of centerline, up to 17' AGL/136' MSL. Trees beginning 984' from DER, 476' left of centerline, up to 100' AGL/219' MSL. Numerous trees beginning 1.2 NM from DER, 1556' left and right of centerline, up sloping on Holyoke range, up to 100' AGL/909' MSL. **Rwy 32**, vehicle on road 256' from DER, up to 17' AGL/136' MSL. Building 176' from DER, 169' right of centerline 25' AGL/144' MSL. Trees beginning 85' from DER, 462' left of centerline, up to 100' AGL/219' MSL. Vehicle on road 1638' from DER, 116' left of centerline, 17' AGL/176' MSL.

NORWOOD, MA**NORWOOD MEMORIAL (OWD)**

TAKEOFF MINIMUMS AND (OBSTACLE)
DEPARTURE PROCEDURES
AMDT 7 14149 (FAA)

TAKEOFF MINIMUMS: **Rwy 10**, 400-1½ or std. w/ min. climb of 310' per NM to 400. **Rwy 17**, 300-2¼ or std. w/ min. climb of 220' per NM to 500, or alternatively, with standard takeoff minimums and a normal 200' per NM climb gradient, takeoff must occur no later than 1700' prior to DER. **Rwy 28**, 400-2 or std. w/min. climb of 385' per NM to 500. **Rwy 35**, 300-1¾ or std. w/min. climb of 230' per NM to 1900, or alternatively, with standard takeoff minimums and a normal 200' per NM climb gradient, takeoff must occur no later than 1700' prior to DER.

DEPARTURE PROCEDURE: **Rwy 10**, climb heading 104° to 1100 before turning north. **Rwy 28**, climb heading 284° to 700 before turning north. **Rwy 35**, turn left heading 315° to 1900 before turning east.

NOTE: **Rwy 10**, trees 225' from DER, 341' left of centerline, 53' AGL/97' MSL. Trees 1641' from DER, 33' left of centerline, 73' AGL/118' MSL. Trees 75' from DER, 302' right of centerline, 15' AGL/63' MSL. Trees 4561' from DER, 1005' right of centerline, 87' AGL/215' MSL. Trees 4244' from DER, 1228' right of centerline, 98' AGL/211' MSL. Trees 1.2 NM from DER, 238' right of centerline, 89' AGL/242' MSL. **Rwy 17**, trees 42' from DER, 507' left of centerline, 33' AGL/76' MSL. Trees 2777' from DER, 273' right of centerline, 78' AGL/126' MSL. Trees 2742' from DER, 291' left of centerline, 73' AGL/121' MSL. Trees 2192' from DER, 444' left of centerline, 64' AGL/106' MSL. Trees 1.8 NM from DER, 3332' right of centerline, 100' AGL/350' MSL. Trees 2979' from DER, 667' right of centerline, 76' AGL/124' MSL. Trees 2111' from DER, 616' right of centerline, 68' AGL/114' MSL. **Rwy 28**, trees 932' from DER, 463' left of centerline, 74' AGL/131' MSL. Trees 2352' from DER, 157' left of centerline, 75' AGL/172' MSL. Trees 2868' from DER, 41' left of centerline, 81' AGL/188' MSL. Stack 6004' from DER, 1246' left of centerline, 103' AGL/224' MSL. Stack 5559' from DER, 651' left of centerline, 117' AGL/234' MSL. Spire 1.8 NM from DER, 311' left of centerline, 98' AGL/335' MSL. Tree 610' from DER, 544' right of centerline, 71' AGL/119' MSL. Tower 4465' from DER, 238' right of centerline, 157' AGL/262' MSL. Spire 6044' from DER, 1320' right of centerline, 143' AGL/284' MSL. Tower 1.7 NM from DER, 723' right of centerline, 132' AGL/386' MSL. Trees 1.9' from DER, 722' right of centerline, 100' AGL/339' MSL. **Rwy 35**, trees 647' from DER, 625' left of centerline, 72' AGL/120' MSL. Trees 2791' from DER, 478' left of centerline, 75' AGL/124' MSL. Tree 3123' from DER, 598' left of centerline, 83' AGL/133' MSL. Pole 5856' from DER, 936' right of centerline, 155' AGL/216' MSL. Pole 5686' from DER, 769' right of centerline, 150' AGL/211' MSL. Trees 1557' from DER, 787' right of centerline, 80' AGL/125' MSL.

08 JAN 2015 to 05 FEB 2015

08 JAN 2015 to 05 FEB 2015

14317

**TAKEOFF MINIMUMS, (OBSTACLE) DEPARTURE PROCEDURES, AND
DIVERSE VECTOR AREA (RADAR VECTORS)**

TAKEOFF MINIMUMS, (OBSTACLE) DEPARTURE PROCEDURES, AND DIVERSE VECTOR AREA (RADAR VECTORS)

14317

OLD TOWN, ME

DEWITT FIELD OLD TOWN MUNI (OLD)

TAKEOFF MINIMUMS AND (OBSTACLE)

DEPARTURE PROCEDURES

ORIG 07270 (FAA)

NOTE: **Rwy 4**, trees beginning 61' from DER, 337' right of centerline, up to 80' AGL/239' MSL. Trees beginning 281' from DER 363' left of centerline, up to 80' AGL/199' MSL. **Rwy 12**, trees beginning 338' from DER, 33' right of centerline, up to 80' AGL/259' MSL. **Rwy 22**, trees beginning 223' from DER, 296' left of centerline, up to 80' AGL/239' MSL. Trees beginning 514' from DER, 184' right of centerline, up to 80' AGL/209' MSL. **Rwy 30**, trees beginning 952' from DER, 55' left of centerline, up to 80' AGL/199' MSL.

ORANGE, MA

ORANGE MUNI (ORE)

TAKEOFF MINIMUMS AND (OBSTACLE)

DEPARTURE PROCEDURES

AMDT 1 12152 (FAA)

TAKEOFF MINIMUMS: **Rwy 1**, std. w/min. climb of 325' per NM to 1800 or 1300-2½ for climb in visual conditions. **Rwy 14**, 400-1½ w/ min. climb of 270' per NM to 1800 or std. w/min. climb of 500' per NM to 1200 or 1300-2 ½ for climb in visual conditions. **Rwy 19**, 300-1 ¾ or std. w/min. climb of 240' per NM to 900. **Rwy 32**, 400-2 ¼ w/ min. climb of 265' per NM to 1700 or std. w/min. climb of 340' per NM to 1700 or 1300-2 ½ for climb in visual conditions.

DEPARTURE PROCEDURE: **Rwy 1**, climb heading 016° to 1800 before proceeding on course. For climb in visual conditions: cross Orange Muni Airport at or above 1700 MSL before proceeding on course. When executing VCOA, notify ATC prior to departure. **Rwy 14**, climb heading 142° to 2000 before proceeding on course. For climb in visual conditions: cross Orange Muni Airport at or above 1700 MSL before proceeding on course. When executing VCOA, notify ATC prior to departure. **Rwy 19**, climb heading 196° to 1500 before proceeding on course. **Rwy 32**, climb heading 322° to 1700 before proceeding on course. For climb in visual conditions: cross Orange Muni Airport at or above 1700 MSL before proceeding on course. When executing VCOA, notify ATC prior to departure.

NOTE: **Rwy 1**, pole and trees beginning 272' from DER, 6' left of centerline, up to 92' AGL/624' MSL. Terrain and trees beginning 5' from DER, 23' right of centerline, up to 100' AGL/632' MSL. **Rwy 14**, trees beginning 186' from DER, 15' left of centerline, up to 90' AGL/699' MSL. Buildings and trees beginning 48' from DER, 23' right of centerline, up to 94' AGL/703' MSL. Tower 5889' from DER, 1606' left of centerline, 88' AGL/926' MSL. Trees 1.1 NM from DER, 2138' left of centerline, up to 70' AGL/817' MSL. **Rwy 19**, trees beginning 164' from DER, 28' left of centerline, up to 94' AGL/667' MSL. Trees beginning 1130' from DER, 23' right of centerline, up to 96' AGL/705' MSL. Trees 1.1 NM from DER, 1931' right of centerline, up to 83' AGL/751' MSL. Trees 1.2 NM from DER, 2125' right of centerline, up to 112' AGL/781' MSL. Trees 1.4 NM from DER, 1927' right of centerline, up to 84' AGL/772' MSL. **Rwy 32**, trees beginning 14' from DER, 87' left of centerline, up to 91' AGL/680' MSL. Trees beginning 521' from DER, 13' right of centerline, up to 95' AGL/618' MSL. Trees 1.2 NM from DER, 2366' left of centerline, up to 94' AGL/841' MSL. Trees 1.7 NM from DER, 3315' right of centerline, up to 61' AGL/906' MSL.

14317

TAKEOFF MINIMUMS, (OBSTACLE) DEPARTURE PROCEDURES, AND DIVERSE VECTOR AREA (RADAR VECTORS)

OXFORD, CT

WATERBURY-OXFORD (OXC)

TAKEOFF MINIMUMS AND (OBSTACLE)

DEPARTURE PROCEDURES

AMDT 5 06327 (FAA)

TAKEOFF MINIMUMS: **Rwy 36**, 300-1 or std. w/ a min. climb of 240' per NM to 1000, alternatively, w/ std. takeoff minimums and a normal 200'/NM climb gradient, takeoff must occur no later than 900' prior to DER.

NOTE: **Rwy 18**, multiple trees and transmission towers beginning 510' from DER, 595' left of centerline, up to 100' AGL/777' MSL. Tree 2157' from DER, 154' from centerline, up to 100' AGL/735' MSL. **Rwy 36**, multiple trees and terrain beginning 464' from DER, 535' from centerline, up to 100' AGL/881' MSL. Tree 54' from DER, 450' left of centerline, up to 100' AGL/736' MSL. Tree 618' from DER, 369' left of centerline, up to 100' AGL/745' MSL.

OXFORD, ME

OXFORD COUNTY RGNL (81B)

TAKEOFF MINIMUMS AND (OBSTACLE)

DEPARTURE PROCEDURES

AMDT 1 07186 (FAA)

TAKEOFF MINIMUMS: **Rwy 15**, 600-3 or 1800-2½ for climb in visual conditions. **Rwy 33**, std. w/ min. climb of 475' per NM to 2000, or 1800-2½ for climb in visual conditions.

DEPARTURE PROCEDURE: **Rwy 15**, climb heading 149° to 1300 before proceeding on course or for climb in visual conditions cross Oxford County Rgnl Airport at or above 2000 before proceeding on course. **Rwy 33**, climb heading 329° to 2000 before proceeding on course or for climb in visual conditions cross Oxford County Rgnl Airport at or above 2000 before proceeding on course.

NOTE: **Rwy 15**, multiple trees beginning 3607' from DER, 572' left of centerline, up to 100' AGL/679' MSL. Multiple assumed obstacles beginning 1.7 NM from DER, 1478' left of centerline, up to 200' AGL/849' MSL. **Rwy 33**, multiple trees beginning 4121' from DER, 70' left of centerline, up to 100' AGL/499' MSL. Multiple trees beginning 5446' from DER, 239' right of centerline, up to 100' AGL/719' MSL. Multiple assumed obstacles beginning 1.6 NM from DER, 393' right of centerline, up to 200' AGL/1079' MSL.

08 JAN 2015 to 05 FEB 2015

08 JAN 2015 to 05 FEB 2015

TAKEOFF MINIMUMS, (OBSTACLE) DEPARTURE PROCEDURES, AND DIVERSE VECTOR AREA (RADAR VECTORS)

14317

PAWTUCKET, RI

NORTH CENTRAL STATE (SFZ)
TAKEOFF MINIMUMS AND (OBSTACLE)
DEPARTURE PROCEDURES
AMDT 4 13066 (FAA)

NOTE: **Rwy 5**, tree 103' from DER, 233' right of centerline, 34' AGL/434' MSL. Windsock abeam DER, 233' right of centerline, 16' AGL/426' MSL. Bush 40' from DER, 249' left of centerline, 28' AGL/428' MSL. Pole 25' from DER, 505' left of centerline, 78' AGL/439' MSL. Tree 346' from DER, 569' left of centerline, 87' AGL/438' MSL. **Rwy 15**, trees beginning 148' from DER, 32' left of centerline, up to 74' AGL/523' MSL. Trees beginning 119' from DER, 417' right of centerline, up to 93' AGL/552' MSL. Pole 200' from DER, 286' right of centerline, 74' AGL/504' MSL. Tree 2569' from DER, on centerline, 67' AGL/516' MSL. **Rwy 23**, trees beginning 144' from DER, 278' left of centerline, up to 90' AGL/480' MSL. Pole 171' from DER, 511' left of centerline, 85' AGL/475' MSL. Trees beginning 916' from DER, 602' right of centerline, 87' AGL/456' MSL. Pole 176' from DER, 507' right of centerline, 65' AGL/446' MSL. **Rwy 33**, trees beginning 58' from DER, 80' left of centerline, up to 45' AGL/554' MSL. Poles beginning 291' from DER, 207' left of centerline, up to 80' AGL/490' MSL. Trees beginning 23' from DER, 504' right of centerline, up to 75' AGL/494' MSL. Trees beginning 819' from DER, 415' right of centerline, up to 94' AGL/504' MSL. Poles beginning 827' from DER, 523' right of centerline, up to 44' AGL/464' MSL.

PITTSFIELD, MA

PITTSFIELD MUNI (PSF)
TAKEOFF MINIMUMS AND (OBSTACLE)
DEPARTURE PROCEDURES
AMDT 2 99198 (FAA)

TAKEOFF MINIMUMS: **Rwys 14, 32, NA**.
Rwy 8, 1100-2 or std. with a min. climb of 270' per NM to 2500. **Rwy 26**, 800-2 or std. with a min. climb of 360' per NM to 2100.
DEPARTURE PROCEDURE: **Rwy 8**, climb runway heading to 2000, then climbing right turn via CTR R-331 to 3000 before proceeding on course.
Rwy 26, climb runway heading to 2400 before proceeding on course.
NOTE: **Rwy 8**, 120' AGL tree 370' from DER, 533' right of centerline.

PITTSFIELD, ME

PITTSFIELD MUNI (2B7)
TAKEOFF MINIMUMS AND (OBSTACLE)
DEPARTURE PROCEDURES
AMDT 2A 12040 (FAA)

DEPARTURE PROCEDURE: **Rwy 36**, 300-1¼ or std w/ min. climb of 220' per NM to 500.
NOTE: **Rwy 18**, trees beginning 86' from DER, left and right of centerline, up to 80' AGL/259' MSL. **Rwy 36**, aircraft 49' from DER, 156' left of centerline, 17' AGL/216' MSL. Vehicle 139' from DER, 452' left of centerline, 15' AGL/214' MSL. Building, trees and poles beginning 63' from DER, 15' right of centerline, up to 77' AGL/357' MSL. Trees, poles and buildings beginning 106' from DER, 39' left of centerline, up to 82' AGL/312' MSL.

14317

TAKEOFF MINIMUMS, (OBSTACLE) DEPARTURE PROCEDURES, AND DIVERSE VECTOR AREA (RADAR VECTORS)

PLYMOUTH, MA

PLYMOUTH MUNI (PYM)
TAKEOFF MINIMUMS AND (OBSTACLE)
DEPARTURE PROCEDURES
AMDT 2 98029 (FAA)

TAKEOFF MINIMUMS: **Rwy 6**, 300-1 or std. with a min. climb of 390' per NM to 500. **Rwys 15, 300-1**. **Rwy 24**, 300-1 or std. with a min. climb of 220' per NM to 400.
Rwy 33, 300-1 or std. with a min. climb of 210' per NM to 400.
DEPARTURE PROCEDURE: **Rwy 6**, climb runway heading to 900 before proceeding on course.

PORTLAND, ME

PORTLAND INTL JETPORT (PWM)
TAKEOFF MINIMUMS AND (OBSTACLE)
DEPARTURE PROCEDURES
AMDT 6 12208 (FAA)

TAKEOFF MINIMUMS: **Rwy 11**, 300-1¼ or std. w/ min. climb of 270' per NM to 400. **Rwy 36**, 300-2¼ or std. w/ min. climb of 270' per NM to 700.
NOTE: **Rwy 11**, trees beginning 983' from DER, 418' left of centerline, up to 59' AGL/73' MSL. Trees beginning 428' from DER, 280' right of centerline, up to 32' AGL/69' MSL. Trees 6037' from DER, 1744' left of centerline, up to 79' AGL/248' MSL. Trees 1.0 NM from DER, 1778' left of centerline, up to 75' AGL/242' MSL. **Rwy 18**, trees beginning 128' from DER, 405' left of centerline, up to 57' AGL/84' MSL. Trees beginning 1206' from DER, 250' right of centerline, up to 88' AGL/130' MSL. **Rwy 29**, trees beginning 2952' from DER, 1066' left of centerline, up to 85' AGL/200' MSL. Trees beginning 1319' from DER, 509' right of centerline, up to 81' AGL/178' MSL.
Rwy 36, fence, building, vehicles on road, poles, and trees beginning 19' from DER, 343' left of centerline, up to 77' AGL/111' MSL. Trees beginning 1279' from DER, 353' right of centerline, up to 86' AGL/128' MSL. Tower 2.1 NM from DER, 1370' right of centerline, 356' AGL/425' MSL. Tower 2.2 NM from DER, 1231' right of centerline, 360' AGL/431' MSL.

PORTSMOUTH, NH

PORTSMOUTH INTL AT PEASE (PSM)
TAKEOFF MINIMUMS AND (OBSTACLE)
DEPARTURE PROCEDURES
ORIG-A 12096 (FAA)

DEPARTURE PROCEDURE: **Rwy 16**, climb heading 165° to 600 before turning left.
NOTE: **Rwy 34**, building 519' from DER, 439' right of centerline, 16' AGL/115' MSL. Trees beginning 2752' from DER, 1090' right of centerline, 90' AGL/170' MSL.

08 JAN 2015 to 05 FEB 2015

**TAKEOFF MINIMUMS, (OBSTACLE) DEPARTURE PROCEDURES, AND
DIVERSE VECTOR AREA (RADAR VECTORS)**

14317

PRESQUE ISLE, ME

NORTHERN MAINE RGNL ARPT AT
PRESQUE ISLE (PQI)

TAKEOFF MINIMUMS AND (OBSTACLE)
DEPARTURE PROCEDURES

AMDT 4A 11321 (FAA)

TAKEOFF MINIMUMS: **Rwy 1**, 300-1½ or std. w/min. climb of 456' per NM to 900. **Rwy 10**, 300-1¾ or std. w/min. climb of 262' per NM to 900. **Rwy 19**, 800-1 or std. with a min. climb of 230' per NM to 1600.

DEPARTURE PROCEDURE: **Rwy 1**, climb runway heading to 1200 before proceeding on course. **Rwy 10**, climb runway heading to 1700 before proceeding on course.

NOTE: **Rwy 1**, tree 2792' from DER, 856' right of centerline, up to 54' AGL/694' MSL. Tree 7304' from DER, 1849' right of centerline, up to 71' AGL/749' MSL. **Rwy 10**, tree 8710' from DER, 1660' right of centerline, up to 70' AGL/760' MSL. Tree 8861' from DER, 1668' right of centerline, up to 84' AGL/764' MSL.

PRINCETON, ME

PRINCETON MUNI (PNN)

TAKEOFF MINIMUMS AND (OBSTACLE)
DEPARTURE PROCEDURES

AMDT 1 14149 (FAA)

TAKEOFF MINIMUMS: **Rwys 6,24**, NA-Runway closed.

NOTE: **Rwy 15**, bushes beginning 42' from DER, left and right of centerline, up to 18' AGL/247' MSL. Trees beginning 104' from DER, 227' left of centerline, up to 69' AGL/288' MSL. Trees beginning 154' from DER, 287' right of centerline, up to 79' AGL/298' MSL. Trees beginning 900' from DER, left and right of centerline, up to 100' AGL/298' MSL. **Rwy 33**, bushes beginning 33' from DER, 194' left of centerline, up to 16' AGL/275' MSL. Poles beginning 70' from DER, 495' left of centerline, up to 29' AGL/298' MSL. Trees beginning 248' from DER, left and right of centerline, up to 100' AGL/344' MSL.

PROVIDENCE, RI

THEODORE FRANCIS GREEN STATE
(PVD)

TAKEOFF MINIMUMS AND (OBSTACLE)
DEPARTURE PROCEDURES

AMDT 12 07074 (FAA)

TAKEOFF MINIMUMS: **Rwy 34**, std. w/ a min. climb of 269' per NM to 500, or 300-2 w/ a min. climb of 250' per NM to 1200, or 1000-2½ for climb in visual conditions.

DEPARTURE PROCEDURE: **Rwy 34**, for climb in visual conditions: cross Theodore Francis Green State Airport at or above 900 MSL before proceeding on course.

NOTE: **Rwy 5**, multiple trees beginning 1272' from DER, 506' left of centerline, up to 50' AGL/109' MSL. Multiple trees beginning 1541' from DER, 738' right of centerline, up to 73' AGL/123' MSL. **Rwy 16**, multiple trees beginning 85' from DER, 98' right of centerline, up to 36' AGL/105' MSL. Multiple trees beginning 364' from DER, 127' left of centerline, up to 68' AGL/112' MSL. Multiple light poles beginning 2797' from DER, 914' right of centerline, up to 66' AGL/110' MSL. Antenna 3890' from DER, 1352' right of centerline, 91' AGL/151' MSL. Tower 3931' from DER, 1377' right of centerline, 77' AGL/137' MSL. **Rwy 34**, vent 105' from DER, 310' right of centerline, 47' AGL/76' MSL. Blast fence 211' from DER, 209' left of centerline, 7' AGL/61' MSL. Pole 312' from DER, 279' right of centerline, 20' AGL/80' MSL. Multiple trees beginning 352' from DER, 484' right of centerline, up to 79' AGL/136' MSL. Obstruction light 400' from DER, 189' left of centerline, 15' AGL/74' MSL. Vent 546' from DER, 518' left of centerline, 26' AGL/85' MSL. Multiple poles beginning 593' from DER, 245' left of centerline, up to 68' AGL/97' MSL. Multiple trees beginning 1233' from DER, 112' left of centerline, up to 79' AGL/132' MSL. Light 710' from DER, 617' left of centerline, 24' AGL/93' MSL. Tower 9063' from DER, 2916' right of centerline, 255' AGL/310' MSL.

PROVINCETOWN, MA

PROVINCETOWN MUNI (PVC)

TAKEOFF MINIMUMS AND (OBSTACLE)
DEPARTURE PROCEDURES

ORIG 07214 (FAA)

NOTE: **Rwy 7**, trees beginning 133' from DER, 118' right of centerline up to 33' AGL/37' MSL. Trees beginning 165' from DER, 89' left of centerline up to 33' AGL/47' MSL. **Rwy 25**, bush 376' from DER, 575' right of centerline, 12' AGL/21' MSL.

08 JAN 2015 to 05 FEB 2015

08 JAN 2015 to 05 FEB 2015

14317

**TAKEOFF MINIMUMS, (OBSTACLE) DEPARTURE PROCEDURES, AND
DIVERSE VECTOR AREA (RADAR VECTORS)**

TAKEOFF MINIMUMS, (OBSTACLE) DEPARTURE PROCEDURES, AND DIVERSE VECTOR AREA (RADAR VECTORS)

14317

RANGELEY, ME

RANGELEY LAKE SEAPLANE BASE (M57)
TAKEOFF MINIMUMS AND (OBSTACLE)
DEPARTURE PROCEDURES
AMDT 1 14149 (FAA)

TAKEOFF MINIMUMS: **Rwy 6**, std. w/min. climb of 442' per NM to 4700 or 2600-2½ for climb in visual conditions. **Rwy 24**, std. w/min. climb of 300' per NM to 3900 or 2600-2½ for climb in visual conditions.

DEPARTURE PROCEDURE: **Rwy 6**, climb heading 075° to 4700 before proceeding on course. For climb in visual conditions, cross Rangeley Lake airport at or above 4000 before proceeding on course, do not exceed 210 KIAS until leaving 4000. When executing VCOA, notify ATC prior to departure. **Rwy 24**, climb heading 255° to 3900 before proceeding on course.

For climb in visual conditions, cross Rangeley Lake airport at or above 4000 before proceeding on course, do not exceed 210 KIAS until leaving 4000. When executing VCOA, notify ATC prior to departure.

NOTE: **Rwy 6**, trees and buildings beginning 1374' from DER, 446' right of centerline, up to 80' AGL/1620' MSL. Vehicles on roadway beginning 3200' from DER, 957' right of centerline, up to 15' AGL/1614' MSL. Boats on the water, up to 1553' MSL. **Rwy 24**, boats on the water, up to 1553' MSL.

STEVEN A. BEAN MUNI (8B0)

TAKEOFF MINIMUMS AND (OBSTACLE)
DEPARTURE PROCEDURES
ORIG 92093 (FAA)

TAKEOFF MINIMUMS: **Rwys 14, 32**, 600-2.

DEPARTURE PROCEDURE: **Rwy 14**, climbing right turn direct RQM NDB to cross at or above 4000 before proceeding on course. **Rwy 32**, climbing left turn direct RQM NDB to cross at or above 4000 before proceeding on course.

ROCHESTER, NH

SKYHAVEN (DAW)
TAKEOFF MINIMUMS AND (OBSTACLE)
DEPARTURE PROCEDURES
AMDT 6 09351 (FAA)

DEPARTURE PROCEDURE: **Rwy 33**, climb heading 327° to 800, then climbing left turn heading 250° to intercept CON VORTAC R-095 to 3000 before proceeding on course.

NOTE: **Rwy 15**, trees beginning 450' from DER, 295' left of centerline, up to 110' AGL/400' MSL. Trees and poles beginning 111' from DER, 389' right of centerline, up to 57' AGL/367' MSL. **Rwy 33**, trees beginning 200' from DER, 154' right of centerline, up to 120' AGL/443' MSL. Trees beginning 106' from DER, 160' left of centerline, up to 103' AGL/406' MSL.

ROCKLAND, ME

KNOX COUNTY RGNL (RKD)
TAKEOFF MINIMUMS AND (OBSTACLE)
DEPARTURE PROCEDURES
AMDT 4 04218 (FAA)

TAKEOFF MINIMUMS: **Rwy 3**, 300-1 or std. with a min. climb of 270' per NM to 2000, or 1100-2½ for climb in visual conditions. **Rwy 31**, std. with a min. climb of 300' per NM to 1300, or 1100-2½ for climb in visual conditions.

DEPARTURE PROCEDURE: **Rwys 3, 31**, for climb in visual conditions: cross Knox County Rgnl at or above 1000' MSL before proceeding on course.

NOTE: **Rwy 3**, multiple trees, bushes, obstruction lights and towers beginning 108' from DER, 433' left of centerline, up to 146' AGL/206' MSL. **Rwy 13**, multiple trees, antennas, and light poles beginning 475' from DER, 548' left of centerline, up to 80' AGL/155' MSL. **Rwy 21**, multiple trees beginning 284' from DER, 255' left of centerline, up to 65' AGL/110' MSL. **Rwy 31**, multiple trees beginning 2025' from DER, 895' right of centerline, up to 74' AGL/115' MSL.

RUTLAND, VT

SOUTHERN VERMONT RGNL (RUT)
TAKEOFF MINIMUMS AND (OBSTACLE)
DEPARTURE PROCEDURES
AMDT 4A 13038 (FAA)

TAKEOFF MINIMUMS: **Rwy 1**, std. w/ min. climb of 439' per NM to 3000, or 3600-3 for climb in visual conditions.

Rwy 13, NA-obstacles. **Rwy 19**, std. w/ min. climb of 470' per NM to 3300, or 3600-3 for climb in visual conditions. **Rwy 31**, std. w/ min. climb of 500' per NM to 4500, or 3600-3 for climb in visual conditions.

DEPARTURE PROCEDURE: **Rwy 1**, climb on 013° course to DY0 NDB, cross DY0 NDB at or above 6000, if not at 6000, depart DY0 NDB on bearing 325° to 6000 before proceeding on course. For climb in visual condition: cross Rutland-Southern Vermont RGNL airport at or above 4300 before proceeding on course. When executing VCOA, notify ATC prior to departure. **Rwy 19**, climb heading 194° to 1400, then climbing right turn on 025° course to DY0 NDB, cross DY0 NDB at or above 6000, if not at 6000, depart DY0 NDB on bearing 325° to 6000 before proceeding on course. For climb in visual condition: cross Rutland-Southern Vermont RGNL airport at or above 4300 before proceeding on course. When executing VCOA, notify ATC prior to departure. **Rwy 31**, climb heading 329° to 1600, then climbing right turn on 025° course to DY0 NDB, cross DY0 NDB at or above 6000, if not at 6000, depart DY0 NDB on bearing 325° to 6000 before proceeding on course. For climb in visual condition: cross Rutland-Southern Vermont RGNL airport at or above 4300 before proceeding on course. When executing VCOA, notify ATC prior to departure.

NOTE: **Rwy 1**, tree 79' from DER, 424' right of centerline, 80' AGL/805' MSL. **Rwy 19**, trees beginning 167' from DER, 305' right of centerline, up to 42' AGL/843' MSL. Trees beginning 393' from DER, 175' left of centerline, up to 100' AGL/967' MSL. **Rwy 31**, trees beginning 334' from DER, 94' left of centerline, up to 100' AGL/1319' MSL. Trees beginning 885' from DER, 201' right of centerline, up to 85' AGL/827' MSL.

08 JAN 2015 to 05 FEB 2015

08 JAN 2015 to 05 FEB 2015

14317

TAKEOFF MINIMUMS, (OBSTACLE) DEPARTURE PROCEDURES, AND DIVERSE VECTOR AREA (RADAR VECTORS)

TAKEOFF MINIMUMS, (OBSTACLE) DEPARTURE PROCEDURES, AND DIVERSE VECTOR AREA (RADAR VECTORS)

14317

SANFORD, ME

SANFORD SEACOAST RGNL (SFM)
TAKEOFF MINIMUMS AND (OBSTACLE)
DEPARTURE PROCEDURES
AMDT 3A 13066 (FAA)

TAKEOFF MINIMUMS: **Rwy 32**, 300-1¼ or std. w/min. climb of 375' per NM to 500.

DEPARTURE PROCEDURE: **Rwy 25**, climb heading 255° to 1100 before turning right. **Rwy 32**, climb heading 331° to 1600 before turning left.

NOTE: **Rwy 7**, vehicles on road, antenna, light support structure, transmission tower, and trees beginning 62' from DER, 4' left of centerline, up to 69' AGL/309' MSL. Trees beginning 220' from DER, 19' right of centerline, up to 72' AGL/311' MSL. **Rwy 14**, trees beginning 149' from DER, 320' left of centerline, up to 55' AGL/294' MSL. Bushes and trees beginning 93' from DER, 260' right of centerline, up to 81' AGL/320' MSL. **Rwy 25**, trees beginning 118' from DER, 511' left of centerline, up to 60' AGL/379' MSL. Trees beginning 245' from DER, 476' right of centerline, up to 82' AGL/321' MSL. **Rwy 32**, trees beginning 763' from DER, 58' left of centerline, up to 77' AGL/396' MSL. Pole and trees beginning 332' from DER, 59' right of centerline, up to 92' AGL/381' MSL. Trees 3269' from DER, 1226' left of centerline, up to 72' AGL/401' MSL. Trees 4667' from DER, 1225' left of centerline, up to 82' AGL/431' MSL. Trees 5473' from DER, 1013' left of centerline, up to 67' AGL/416' MSL.

SOUTHBRIDGE, MA

SOUTHBRIDGE MUNI (3B0)
TAKEOFF MINIMUMS AND (OBSTACLE)
DEPARTURE PROCEDURES
AMDT 3 10070 (FAA)

TAKEOFF MINIMUMS: **Rwy 2**, 300-1½ or std. with a min. climb of 370' per NM to 1000.

DEPARTURE PROCEDURE: **Rwy 2**, climb heading 022° to 1800 before turning right.

NOTE: **Rwy 2**, trees beginning 597' from DER, 58' left of centerline, up to 100' AGL/913' MSL. Tree 812' from DER, 197' right of centerline, 100' AGL/791' MSL. **Rwy 20**, trees beginning 70' from DER, 309' right of centerline, up to 78' AGL/740' MSL. Tree 1044' from DER, 395' left of centerline, 43' AGL/732' MSL.

SPRINGFIELD, VT

HARTNESS STATE (SPRINGFIELD) (VSF)
TAKEOFF MINIMUMS AND (OBSTACLE)
DEPARTURE PROCEDURES
AMDT 3 11181 (FAA)

TAKEOFF MINIMUMS: **Rwy 5**, 800-3 w/min. climb of 649' per NM to 4500 or 2800-3 for climb in visual conditions. **Rwy 11**, 2800-3 for climb in visual conditions. **Rwy 29**, 800-2½ w/min. climb of 490' per NM to 4600 or std. w/min. climb of 630' per NM to 3400 or 2800-3 for climb in visual conditions. **Rwy 23**, std. w/min. climb of 400' per NM to 2800 or 2800-3 for climb in visual conditions.

DEPARTURE PROCEDURE: **Rwy 5**, for climb in visual conditions cross Hartness State (Springfield) Airport at or above 3200 MSL before proceeding on course. **Rwy 11**, for climb in visual conditions cross Hartness State (Springfield) Airport at or above 3200 MSL before proceeding on course. **Rwy 23**, climb heading 230° to 2800 before proceeding on course, or for climb in visual conditions cross Hartness State (Springfield) Airport at or above 3200 MSL before proceeding on course. **Rwy 29**, climb heading 294° to 1200 before proceeding on course, or for climb in visual conditions cross Hartness State (Springfield) Airport at or above 3200 MSL before proceeding on course.

NOTE: **Rwy 5**, trees beginning 28' from DER, 187' right of centerline, up to 80' AGL/1344' MSL. Trees beginning 44' from DER, 499' left of centerline, up to 80' AGL/1291' MSL. **Rwy 23**, trees beginning 9' from DER, 339' right of centerline, up to 80' AGL/679' MSL. Trees beginning 10' from DER, 265' left of centerline, up to 80' AGL/639' MSL. **Rwy 29**, trees beginning 22' from DER, 470' left of centerline, up to 80' AGL/639' MSL. Vehicle on road 1409' from DER, 845' right of centerline, up to 17' AGL/616' MSL. Trees beginning 1614' from DER, 924' right of centerline, up to 80' AGL/699' MSL.

STOW, MA

MINUTE MAN AIRFIELD (6B6)
TAKEOFF MINIMUMS AND (OBSTACLE)
DEPARTURE PROCEDURES
AMDT 3 10266 (FAA)

TAKEOFF MINIMUMS: **Rwy 3**, 400-2¼ or std. w/min. climb of 420' per NM to 700. **Rwy 12**, NA-Environmental. **Rwy 21**, 400-2¼ or std. w/min. climb of 600' per NM to 600.

DEPARTURE PROCEDURE: **Rwy 3**, climb heading 032° to 800 before proceeding on course. **Rwy 21**, climb heading 212° to 1600 before proceeding on course.

NOTE: **Rwy 3**, trees beginning 9' from DER, 244' right of centerline, up to 80' AGL/434' MSL. Trees beginning 246' from DER, 168' left of centerline, up to 80' AGL/652' MSL. **Rwy 21**, trees beginning 11' from DER, 188' right of centerline, up to 80' AGL/385' MSL. Trees beginning 11' from DER, 198' left of centerline, up to 80' AGL/365' MSL. Trees beginning 529' from DER, left and right of centerline, up to 80' AGL/574' MSL. Tower 1.6 NM from DER, 2483' left of centerline, 118' AGL/511' MSL.

08 JAN 2015 to 05 FEB 2015

08 JAN 2015 to 05 FEB 2015

14317

TAKEOFF MINIMUMS, (OBSTACLE) DEPARTURE PROCEDURES, AND DIVERSE VECTOR AREA (RADAR VECTORS)

TAKEOFF MINIMUMS, (OBSTACLE) DEPARTURE PROCEDURES, AND DIVERSE VECTOR AREA (RADAR VECTORS)

14317

TAUNTON, MA

TAUNTON MUNI-KING FIELD (TAN)
TAKEOFF MINIMUMS AND (OBSTACLE)
DEPARTURE PROCEDURES
AMDT 2 08045 (FAA)

TAKEOFF MINIMUMS: **Rwys 4, 22**, NA-Turf runway.

Rwy 12, 200-1½ or standard with minimum climb of 362' per NM to 300. **Rwy 30**, 200-1 or std. w/ min climb of 291' per NM to 300.

NOTE: **Rwy 12**, Trees and terrain beginning 61' from DER, 128' right of centerline, up to 80' AGL/229' MSL. Trees and terrain beginning 93' from DER, 204' left of centerline, up to 80' AGL/159' MSL. **Rwy 30**, Terrain beginning 147' from DER, 284' right of centerline, 43' MSL. Trees and terrain beginning 1044' from DER, 320' left of centerline, up to 80' AGL/199' MSL.

VINEYARD HAVEN, MA

MARTHAS VINEYARD (MVY)
TAKEOFF MINIMUMS AND (OBSTACLE)
DEPARTURE PROCEDURES
AMDT 1 11013 (FAA)

NOTE: **Rwy 6**, trees beginning 585' from DER, 492' left of centerline, up to 100' AGL/159' MSL. Trees beginning 707' from DER, 543' right of centerline, up to 100' AGL/159' MSL. **Rwy 15**, trees beginning 276' from DER, 156' left of centerline, up to 100' AGL/159' MSL. Pole 411' from DER, 475' right of centerline, 45' AGL/97' MSL. Trees beginning 430' from DER, 79' right of centerline, up to 100' AGL/159' MSL. **Rwy 24**, trees beginning 594' from DER, 201' left of centerline, up to 100' AGL/149' MSL. Trees beginning 606' from DER, 442' right of centerline, up to 100' AGL/159' MSL. Building 791' from DER, 266' left of centerline, 25' AGL/75' MSL. **Rwy 33**, trees beginning 36' from DER, 120' left of centerline, up to 100' AGL/179' MSL. Trees beginning 67' from DER, 75' right of centerline, up to 100' AGL/169' MSL.

WATERVILLE, ME

WATERVILLE ROBERT LAFLEUR (WVL)
TAKEOFF MINIMUMS AND (OBSTACLE)
DEPARTURE PROCEDURES
ORIG 82133 (FAA)
TAKEOFF MINIMUMS: **Rwys 14, 32**, 300-1.

WEST DOVER, VT

DEERFIELD VALLEY RGNL (4V8)
TAKEOFF MINIMUMS AND (OBSTACLE)
DEPARTURE PROCEDURES
AMDT 2 11181 (FAA)

TAKEOFF MINIMUMS: **Rwy 1**, 700-3 w/min. climb of 430' per NM to 4400. **Rwy 19**, std. w/min. climb of 300' per NM to 3900.

DEPARTURE PROCEDURE: **Rwy 1**, climb heading 005° to 4400 before turning west. **Rwy 19**, climb heading 185° to 3900 before turning west.

NOTE: **Rwy 1**, trees beginning 31' from DER, left and right of centerline, up to 90' AGL/2640' MSL. Rising terrain beginning 1.2 NM from DER, left and right of centerline, up to 4140' MSL. **Rwy 19**, trees beginning 16' from DER, left and right of centerline, up to 90' AGL/2078' MSL.

WESTERLY, RI

WESTERLY STATE (WST)
TAKEOFF MINIMUMS AND (OBSTACLE)
DEPARTURE PROCEDURES
AMDT 3 11153 (FAA)

TAKEOFF MINIMUMS: **Rwy 25**, 300-1

NOTE: **Rwy 7**, trees beginning 36' from DER 57' right of centerline, up to 70' AGL/120' MSL. Tree 789' from DER, 332' left of centerline, 41' AGL/100' MSL.

Rwy 14, trees beginning 124' from DER, 31' right of centerline, up to 61' AGL/173' MSL. Trees beginning 443' from DER, 73' left of centerline, up to 54' AGL/163' MSL. Bush 327' from DER, 3' left of centerline, 19' AGL/98' MSL. **Rwy 25**, trees beginning 171' from DER, 119' right of centerline, up to 62' AGL/121' MSL. Tank 2957' from DER, 1038' left of centerline, 126' AGL/250' MSL. Obstruction light on pole 50' from DER, 496' left of centerline, 13' AGL/ 92' MSL. Trees beginning 439' from DER, 93' left of centerline, up to 61' AGL/184' MSL. **Rwy 32**, trees beginning 32' from DER, 46' right of centerline, up to 84' AGL/173' MSL. Trees beginning 152' from DER, 41' left of centerline, up to 85' AGL/174' MSL.

WESTFIELD/SPRINGFIELD, MA

WESTFIELD-BARNES RGNL (BAF)
TAKEOFF MINIMUMS AND (OBSTACLE)
DEPARTURE PROCEDURES
AMDT 4A 13122 (FAA)

TAKEOFF MINIMUMS: **Rwy 2**, 300-1½ or std. w/ min. climb of 204' per NM to 600, or alternatively, with standard TAKEOFF minimums a normal 200'/NM climb gradient, TAKEOFF must occur no later than 1200' prior to DER. **Rwy 15**, 400-2 or std. w/ min. climb of 404' per NM to 700. **Rwy 33**, std. w/ min. climb of 323' per NM to 2000, or 1500- 2½ for climb in visual conditions.

DEPARTURE PROCEDURE: **Rwy 2**, climb heading 024° to 1700 before proceeding on course. **Rwy 15**, climb heading 154° to 1300 before proceeding on course.

Rwy 20, climb heading 204° to 1500 before proceeding on course. **Rwy 33**, climb heading 334° to 1900 before proceeding on course, or for climb in visual conditions: cross Westfield- Barnes Rgnl airport at or above 1600 MSL before proceeding on course.

NOTE: **Rwy 2**, trees beginning 1186' from DER, 144' left of centerline, up to 100' AGL/385' MSL. Trees beginning 1098' from DER, 431' right of centerline, up to 100' AGL/465' MSL. **Rwy 15**, trees beginning 245' from DER, 74' left of centerline, up to 100' AGL/576' MSL. Bush 245' from DER, 285' left of centerline, up to 20' AGL/265' MSL. Obstruction light on tank 4773' from DER, 1315' left of centerline, 190' AGL/440' MSL. Trees beginning 360' from DER, 8' right of centerline, up to 100' AGL/508' MSL. **Rwy 20**, trees beginning 18' from DER, 47' left of centerline, up to 100' AGL/321' MSL. Trees beginning 541' from DER, 138' right of centerline, up to 100' AGL/ 329' MSL. **Rwy 33**, trees and bush beginning 151' from DER, 138' left of centerline, up to 100' AGL/383' MSL. Obstruction light on radio tower and towers beginning 1.50 NM from DER, 2641' left of centerline, up to 305' AGL/545' MSL. Trees beginning 311' from DER, 35' right of centerline, up to 100' AGL/ 513' MSL.

08 JAN 2015 to 05 FEB 2015

08 JAN 2015 to 05 FEB 2015

14317

TAKEOFF MINIMUMS, (OBSTACLE) DEPARTURE PROCEDURES, AND DIVERSE VECTOR AREA (RADAR VECTORS)

TAKEOFF MINIMUMS, (OBSTACLE) DEPARTURE PROCEDURES, AND DIVERSE VECTOR AREA (RADAR VECTORS)

14317

WESTOVER ARB/METROPOLITAN (KCEF),

SPRINGFIELD/CHICOPEE, MA
TAKEOFF MINIMUMS AND (OBSTACLE)
DEPARTURE PROCEDURES
ORIG, 13066

TAKE-OFF MINIMUMS: **Rwy 5**, standard with minimum climb of 240'/NM to 1600, or 1200-2½ for climb in visual conditions: Cross CEF VOR at or above 1300' MSL before proceeding on course. **Rwy 15**, standard with minimum climb of 210'/NM to 1800, or 1100-2½ for climb in visual conditions, or with standard takeoff minimums and a standard 200'/NM climb gradient, takeoff must occur NLT 1400' prior to DER: Cross CEF VOR at or above 1200' MSL before proceeding on course. **Rwy 33**, standard with minimum climb of 300'/NM to 1800, or 1300-2½ for climb in visual conditions: Cross CEF VOR at or above 1400' MSL before proceeding on course.

TAKE-OFF OBSTACLES: **Rwy 15**, trees 1151' from DER, 118' left of centerline, 100' AGL/319' MSL to 3516' from DER, 1285' left of centerline, 100' AGL/357' MSL. **Rwy 23**, taxiing aircraft 87' from DER, 467' right of centerline, 32' AGL/267' MSL. Trees 1740' from DER, 199' right of centerline, 45' AGL/291' MSL. **Rwy 33**, road/vehicle 1104' from DER, 272' right of centerline, 15' AGL/255' MSL. Trees 2793' from DER, 218' left of centerline, 99' AGL/348' MSL.

WHITEFIELD, NH

MOUNT WASHINGTON RGNL (HIE)

TAKEOFF MINIMUMS AND (OBSTACLE)
DEPARTURE PROCEDURES
AMDT 5 11097 (FAA)

TAKEOFF MINIMUMS: **Rwy 10**, std. w/ min. climb of 670' per NM to 5100 or 3100-3 for climb in visual conditions. **Rwy 28**, std. w/ min. climb of 540' per NM to 2300, or 400-2½ with minimum climb of 340' per NM to 2800, or 3100-3 for climb in visual conditions.

DEPARTURE PROCEDURE: **Rwy 10**, climbing left turn direct GMA NDB thence ...
or for climb in visual conditions, cross Mount Washington RGNL Airport at or above 4000' MSL, then on course 250° to GMA NDB, thence ...

Rwy 28, climb direct GMA NDB thence ... or for climb in visual conditions, cross Mount Washington RGNL Airport at or above 4000' MSL, then on course 250° to GMA NDB, thence ...

... climb in GMA NDB holding pattern (hold West, left turns, 104° bearing inbound) to cross GMA NDB at or above 5500' MSL before proceeding on course.

NOTE: **Rwy 10**, train beginning 7' from DER, 467' left of centerline, up to 23' AGL/1125' MSL. Bush 52' from DER, 373' right of centerline, 10' AGL/1082' MSL. Trees beginning 61' from DER, left and right of centerline, up to 100' AGL/1418' MSL. Rising terrain beginning 153' from DER, left and right of centerline, up to 1185' MSL. Poles beginning 686' from DER, 379' left of centerline, 45' AGL/1128' MSL. **Rwy 28**, train beginning 7' from DER, 469' right of centerline, up to 23' AGL/1085' MSL. Vehicles on road beginning 8' from DER, left and right of centerline, up to 15' AGL/1097' MSL. Rising terrain beginning 213' from DER, 485' left of centerline, up to 1303' MSL. Trees beginning 269' from DER, left and right of centerline, up to 100' AGL/1438' MSL.

14317

TAKEOFF MINIMUMS, (OBSTACLE) DEPARTURE PROCEDURES, AND DIVERSE VECTOR AREA (RADAR VECTORS)

WILLIMANTIC, CT WINDHAM (IJD)

TAKEOFF MINIMUMS AND (OBSTACLE)
DEPARTURE PROCEDURES
AMDT 6 14149 (FAA)

TAKEOFF MINIMUMS: **Rwy 9**, std. w/ min. climb of 411' per NM to 900, or 1100-2½ for climb in visual conditions. **Rwy 18**, 300-2 or std. w/ min. climb of 434' per NM to 700. **Rwy 27**, 300-2 or std. w/ min. climb of 270' per NM to 800. **Rwy 36**, std. w/ min. climb of 405' per NM to 700, or 1100-2½ for climb in visual conditions.

DEPARTURE PROCEDURE: **Rwy 9**, climb heading 089° to 900 before proceeding on course, or for climb in visual conditions cross Windham Airport at or above 1200 before proceeding on course. When executing VCOA, notify ATC prior to departure. **Rwy 18**, climb heading 170° to 1000 before turning right. **Rwy 27**, climb heading 269° to 800 before proceeding on course. **Rwy 36**, climb heading 358° to 700 before proceeding on course, or for climb in visual conditions cross Windham Airport at or above 1200 before proceeding on course. When executing VCOA, notify ATC prior to departure.

NOTE: **Rwy 9**, vehicle on road beginning 22' from DER, 461' right of centerline, up to 15' AGL/292' MSL. Trees beginning 29' from DER, 92' right of centerline, up to 52' AGL/301' MSL. Vehicle on road beginning 66' from DER, 188' left of centerline, up to 15' AGL/292' MSL. Fence 75' from DER, 196' right of centerline, 6' AGL/277' MSL.

Poles beginning 284' from DER, left and right of centerline, up to 51' AGL/322' MSL. Trees beginning 466' from DER, 229' right of centerline, up to 88' AGL/349' MSL. Vehicle on road beginning 1110' from DER, left and right of centerline, up to 15' AGL/299' MSL. Trees beginning 1147' from DER, left and right of centerline, up to 80' AGL/376' MSL. Catenary beginning 1305' from DER, 126' right of centerline, up to 41' AGL/310' MSL. Trees beginning 4005' from DER, left and right of centerline, up to 80' AGL/587' MSL. Trees beginning 1.1 NM from DER, left and right of centerline, up to 80' AGL/668' MSL. **Rwy 18**, vehicle in parking lot 17' from DER, 264' left of centerline, 15' AGL/264' MSL. Trees beginning 47' from DER, 66' right of centerline, up to 80' AGL/315' MSL. Trees beginning 123' from DER, 45' left of centerline, up to 80' AGL/326' MSL. Pole 413' from DER, 147' left of centerline, 30' AGL/279' MSL. Trees beginning 2097' from DER, 19' right of centerline, up to 80' AGL/412' MSL. Trees beginning 2901' from MSL, 81' left of centerline, up to 80' AGL/418' MSL. Trees beginning 1.6 NM from DER, 2908' left of centerline, up to 80' AGL/516' MSL. **Rwy 27**, trees beginning 122' from DER, 117' left of centerline, up to 63' AGL/272' MSL. Trees beginning 134' from DER, 126' right of centerline, up to 55' AGL/264' MSL. Trees beginning 193' from DER, left and right of centerline, up to 82' AGL/317' MSL. Trees beginning 2981' from DER, 442' right of centerline, up to 83' AGL/539' MSL. **Rwy 36**, tree 31' from DER, 502' left of centerline, 93' AGL/312' MSL. Trees beginning 130' from DER, 157' right of centerline, up to 99' AGL/329' MSL. Trees beginning 195' from DER, 22' left of centerline, up to 103' AGL/316' MSL. Trees beginning 4742' from DER, 1397' left of centerline, up to 80' AGL/546' MSL.

08 JAN 2015 to 05 FEB 2015

TAKEOFF MINIMUMS, (OBSTACLE) DEPARTURE PROCEDURES, AND DIVERSE VECTOR AREA (RADAR VECTORS)

14317

WINDSOR LOCKS, CT

BRADLEY INTL (BDL)

TAKEOFF MINIMUMS AND (OBSTACLE) DEPARTURE PROCEDURES

AMDT 3 10154 (FAA)

TAKEOFF MINIMUMS: **Rwy 33**, std. w/ min. climb of 326' per NM to 1000, or 1200-2½ for climb in visual conditions.

DEPARTURE PROCEDURE: **Rwy 1**, Climb heading 013° to 1000 before turning left. **Rwy 33**, Climb heading 328° to 1000 or for climb in visual conditions: cross Bradley Intl airport at or above 1200 before proceeding on course.

NOTE: **Rwy 1**, vehicle on roadway 342' from DER, 564' left of centerline, 15' AGL/184' MSL. Trees beginning 441' from DER, 493' left of centerline, up to 100' AGL/269' MSL. Trees beginning 1844' from DER, 45' right of centerline, up to 100' AGL/299' MSL. **Rwy 6**, trees beginning 21' from DER, 464' left of centerline, up to 100' AGL/249' MSL. Trees beginning 1956' from DER, 921' right of centerline, up to 100' AGL/239' MSL. **Rwy 15**, vehicle on roadway 531' from DER, 606' left of centerline, up to 15' AGL/186' MSL. Trees beginning 2341' from DER, 767' left of centerline, up to 100' AGL/244' MSL. Vehicle on roadway 429' from DER, 572' right of centerline, up to 15' AGL/184' MSL. Tree 1520' from DER, 786' right of centerline, up to 100' AGL/259' MSL. **Rwy 24**, trees beginning 3066' from DER, 599' left of centerline, up to 100' AGL/269' MSL. Obstruction light on fence 1239' from DER, 784' left of centerline, up to 45' AGL/215' MSL. Trees beginning 2345' from DER, 489' right of centerline, up to 100' AGL/299' MSL. **Rwy 33**, trees beginning 1590' from DER, 275' left of centerline, up to 100' AGL/256' MSL. Tower 2.4 NM from DER, 3534' left of centerline, 104' AGL/774' MSL. Trees beginning 1618' from DER, 264' right of centerline, up to 100' AGL/263' MSL.

WISCASSET, ME

WISCASSET (IWI)

TAKEOFF MINIMUMS AND (OBSTACLE) DEPARTURE PROCEDURES

AMDT 2 10154 (FAA)

TAKEOFF MINIMUMS: **Rwy 7**, 300-2 or std. with a min. climb of 232' per NM to 400, or alternatively, with standard TAKEOFF minimums and a normal 200' per NM climb gradient, TAKEOFF must occur no later than 2100' prior to DER.

NOTE: **Rwy 7**, trees beginning 115' from DER, right of and left of centerline, up to 80' AGL/149' MSL. Vehicle on road, 537' from DER, right and left of centerline, 17' AGL/76' MSL. T-L towers beginning 3144' from DER, right and left of centerline, 141' AGL/206' MSL. Trees beginning 3643' from DER, 1311' right of centerline, up to 80' AGL/179' MSL. Pole 400' from DER, 500' left of centerline, 35' AGL/85' MSL. Trees beginning 1.38 NM from DER, 285' right of centerline, up to 80' AGL/299' MSL. **Rwy 25**, vehicles on roads beginning 30' from DER, right and left of centerline, 15' AGL/84' MSL. Trees beginning 739' from DER, 111' left of centerline, up to 80' AGL/149' MSL. Trees beginning 501' from DER, 252' right of centerline, up to 80' AGL/189' MSL.

14317

TAKEOFF MINIMUMS, (OBSTACLE) DEPARTURE PROCEDURES, AND DIVERSE VECTOR AREA (RADAR VECTORS)

WORCESTER, MA

WORCESTER RGNL (ORH)

TAKEOFF MINIMUMS AND (OBSTACLE) DEPARTURE PROCEDURES

AMDT 8 10070 (FAA)

TAKEOFF MINIMUMS: **Rwy 29**, 300-1 or std. with a min. climb of 323' per NM to 1300. **Rwy 33**, 700-3 or std. with a min. climb of 394' per NM to 2000.

DEPARTURE PROCEDURE: **Rwy 29**, climb heading 289° to 1600 before turning right. **Rwy 33**, climb heading 333° to 2000 before turning right

NOTE: **Rwy 15**, trees beginning 130' from DER, 333' right of centerline, up to 100' AGL/1011' MSL. Trees beginning 63' from DER, 250' left of centerline, up to 100' AGL/1003' MSL. **Rwy 29**, trees beginning 55' from DER, 464' right of centerline, up to 100' AGL/1192' MSL. Trees beginning 617' from DER, 621' left of centerline, up to 100' AGL/1109' MSL. **Rwy 33**, trees beginning 212' from DER, 124' left of centerline, up to 100' AGL/1043' MSL. Trees beginning 499' from DER, 339' right of centerline, up to 100' AGL/1418' MSL. Rising terrain beginning 1.5 NM from DER, 1491' right of centerline, up to 1385' MSL. Rod on pole 1.3 NM from DER, 1325' left of centerline, up to 76' AGL/1224' MSL. Rod on pole 1.4 NM from DER, 195' right of centerline, up to 90' AGL/1257' MSL. Rod on pole 1.6 NM from DER, 2120' right of centerline, up to 107' AGL/1402' MSL. Tower 1.8 NM from DER, 3415' right of centerline, up to 106' AGL/1500' MSL. Tower 2.3 NM from DER, 4087' right of centerline, up to 366' AGL/1674' MSL.