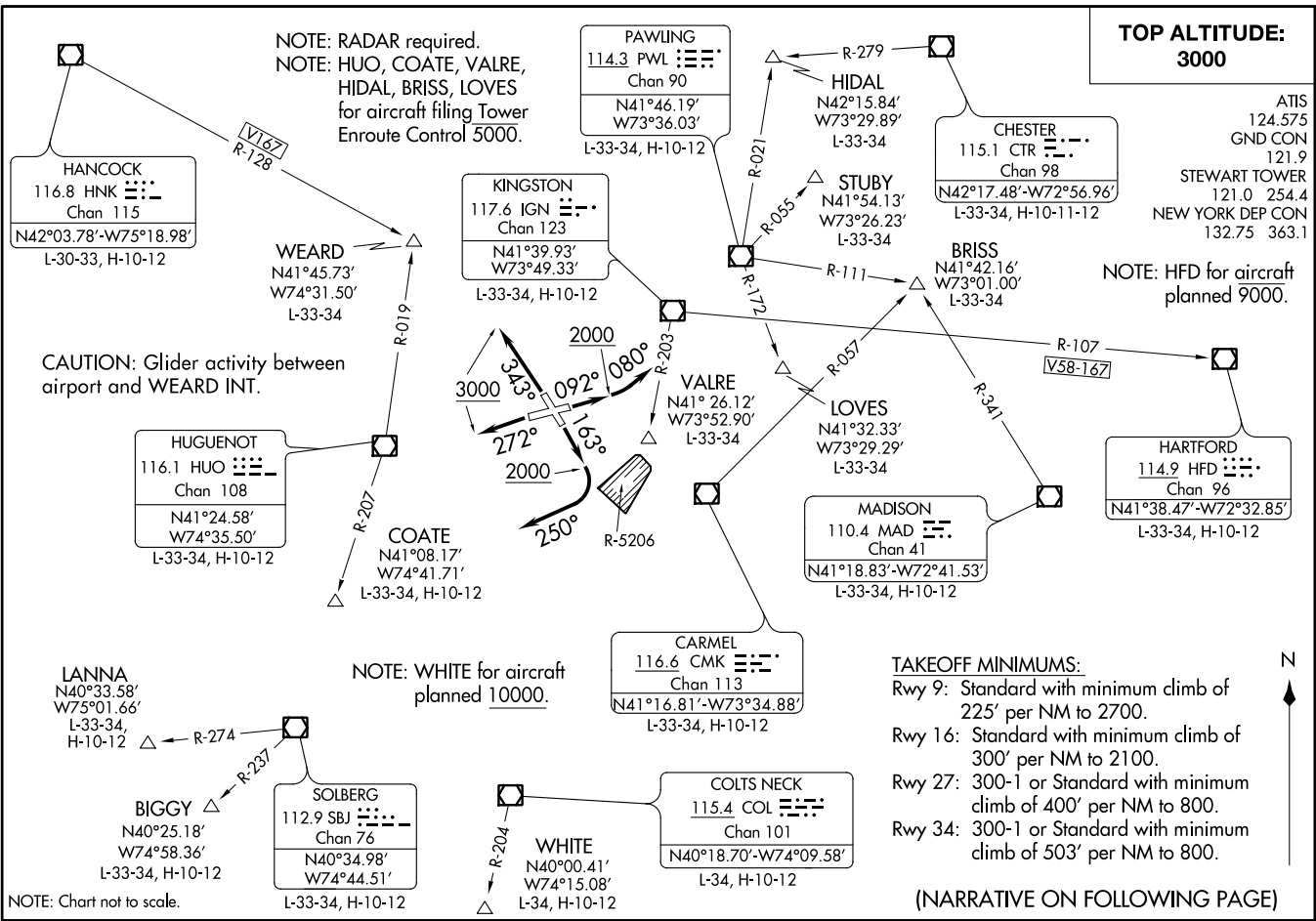


STEWART EIGHT DEPARTURE  
(SWF8.SWF) 15SEP16

NEW YORK, NEW YORK  
STEWART INTL (SWT)



(SWF8.SWF) 16259  
STEWART EIGHT DEPARTURE

SI-450 (FAA)

STEWART INTL (SWT)  
NEW YORK, NEW YORK



DEPARTURE ROUTE DESCRIPTION

TAKEOFF RUNWAY 9: Climb heading 092° to 2000, then turn left heading 080°, maintain 3000, thence . . . .

TAKEOFF RUNWAY 16: Climb heading 163° to 2000, then turn right heading 250°, maintain 3000, thence . . . .

TAKEOFF RUNWAY 27: Climb heading 272° to 3000, thence . . . .

TAKEOFF RUNWAY 34: Climb heading 343° to 3000, thence . . . .

. . . . via radar vectors to assigned route/fix, expect clearance to filed altitude/flight level within ten (10) minutes after departure.

LOST COMMUNICATIONS: If radio contact is not established/lost within 2 minutes after departure, proceed on course and climb to 5000. Ten minutes after departure, climb to filed altitude/flight level.

TAKEOFF OBSTACLE NOTES:

Rwy 9: Trees beginning 68' from DER, 132' left of centerline, up to 43' AGL/487' MSL. Trees beginning 727' from DER, 23' left of centerline, up to 95' AGL/546' MSL. Trees beginning 955' from DER, 21' right of centerline, up to 86' AGL/535' MSL. Trees beginning 2692' from DER, 659' left of centerline, up to 78' AGL/587' MSL.

Rwy 16: Trees beginning 785' from DER, 462' left of centerline, up to 70' AGL/466' MSL. Trees beginning 1255' from DER, 562' right of centerline, up to 109' AGL/492' MSL.

Rwy 27: Airport sign 10' from DER, 54' left of centerline, 2' AGL/491' MSL. Building 694' from DER, 2' right of centerline, 16' AGL/509' MSL. Terrain, DME antenna, and trees beginning 599' from DER, 246' left of centerline, up to 38' AGL/537' MSL. Trees beginning 2259' from DER, 197' left of centerline, up to 101' AGL/640' MSL. Trees 3454' from DER, 1400' left of centerline, up to 118' AGL/667' MSL. Trees beginning 4122' from DER, 1441' right of centerline, up to 108' AGL/627' MSL.

Rwy 34: Terrain beginning 77' from DER, 250' right of centerline, up to 475' MSL. Poles and trees beginning 1094' from DER, 157' right of centerline, up to 72' AGL/571' MSL. Trees 1045' from DER, 597' left of centerline, up to 83' AGL/542' MSL. Trees beginning 1773' from DER, 49' left of centerline, up to 98' AGL/587' MSL. Trees beginning 2422' from DER, 70' right of centerline, up to 72' AGL/601' MSL. Trees 2473' from DER, 910' right of centerline, up to 70' AGL/629' MSL. Trees 3207' from DER, 1345' right of centerline, up to 78' AGL/657' MSL. Trees beginning 4426' from DER, 244' left of centerline, up to 72' AGL/611' MSL. Trees 5527' from DER, 83' right of centerline, up to 83' AGL/612' MSL.

NE-2. 27 APR 2017 to 25 MAY 2017

NE-2. 27 APR 2017 to 25 MAY 2017