

WAAS CH 81904 W02A	APP CRS 016°	Rwy Idg 4599 TDZE 724 Apt Elev 724
--	------------------------	---

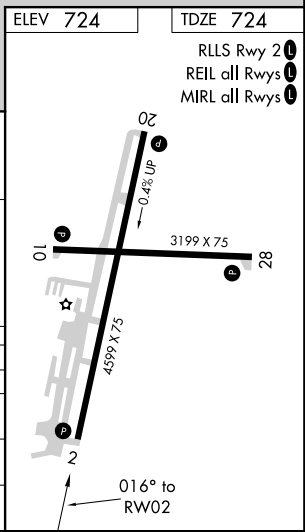
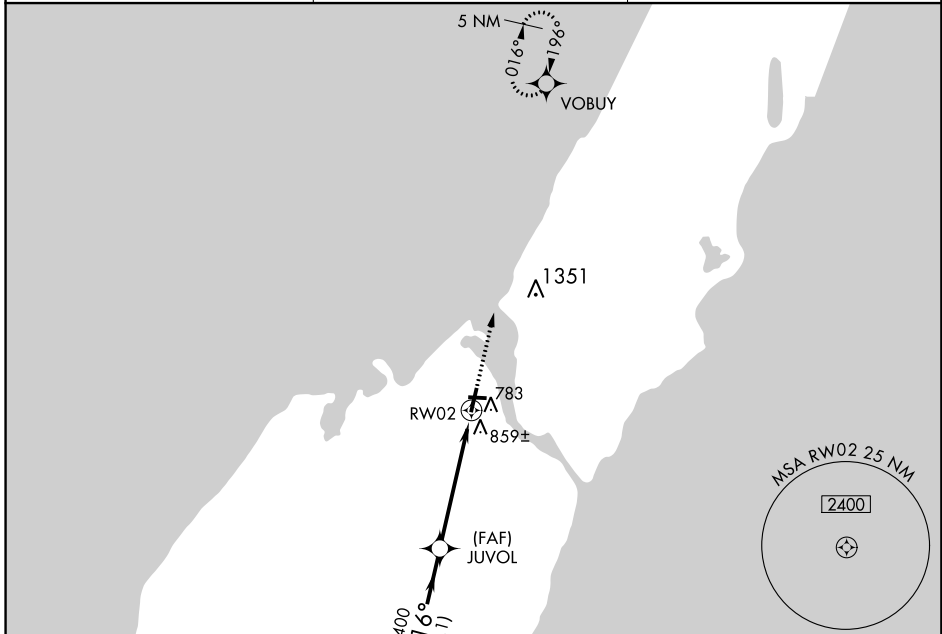
RNAV (GPS) RWY 2

DOOR COUNTY CHERRYLAND (SUE)

Baro-VNAV and VDP NA when using Menominee altimeter setting. When local altimeter setting not received, use Menominee altimeter setting and increase all DA/MDA 60 feet, and LPV, LNAV/VNAV and LNAV Cat C/D visibilities ¼ mile. For uncompensated Baro-VNAV systems, LNAV/VNAV NA below -16°C (4°F) or above 47°C (116°F). Helicopter visibility reduction below ¼ SM NA. DME/DME RNP-0.3 NA.

MISSED APPROACH: Climb to 2600 direct VOBUY and hold.

AWOS-3PT 128.325	GREEN BAY APP CON * 119.25 338.2	UNICOM 122.7(CTAF) 0
----------------------------	--	--------------------------------



Procedure Turn NA NENSE VGS1 and RNAV glidepath not coincident (VGS1 Angle 3.00/TCH 34). 2600 VOBUY

GP 3.00° TCH 40

3500 016° 2400 10.1 NM 3.9 NM 1.1 NM

JUVOL *1.1 NM to RWY 2 *LNAV only.

CATEGORY	A	B	C	D
LPV DA	1013-1 289 (300-1)			
LNAV/VNAV DA	1164-1½ 440 (500-1½)			
LNAV MDA	1120-1 396 (400-1)		1120-1½ 396 (400-1½)	
CIRCLING	1160-1 436 (500-1)	1180-1 456 (500-1)	1180-1½ 456 (500-1½)	1280-2 556 (600-2)

EC-3, 12 OCT 2017 to 09 NOV 2017

EC-3, 12 OCT 2017 to 09 NOV 2017

WAAS CH 86304 W20A	APP CRS 196°	Rwy Idg TDZE 724 Apt Elev 724	4599
--	------------------------	---	-------------

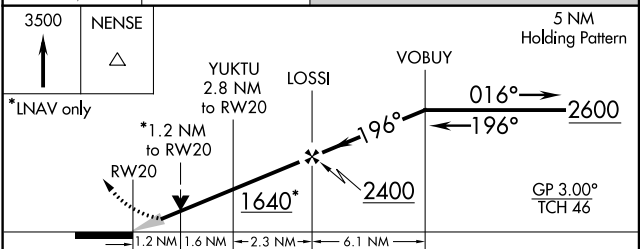
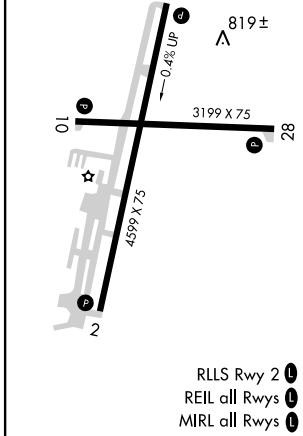
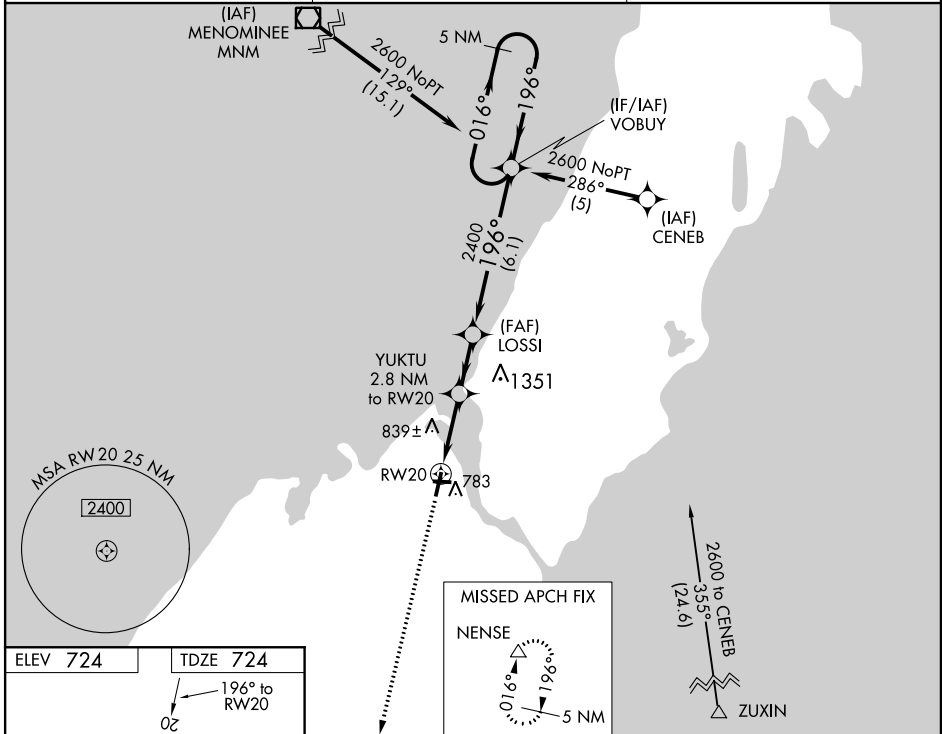
RNAV (GPS) RWY 20

DOOR COUNTY CHERRYLAND (SUE)

⚠ For uncompensated Baro-VNAV systems, LNAV/VNAV NA below -16°C (4°F) or below 47°C (116°F). Baro-VNAV and VDP NA when using Menominee altimeter setting. DME/DME RNP-0.3 NA. When local altimeter setting not received, use Menominee altimeter setting and increase all DA/MDA 60 feet, and LPV, LNAV/VNAV and LNAV Cat C/D visibilities ¼ mile.

MISSED APPROACH: Climb to 3500 direct NENSE and hold.

AWOS-3PT 128.325	GREEN BAY APP CON ★ 119.25 338.2	UNICOM 122.7 (CTAF) 0
----------------------------	--	---------------------------------



CATEGORY	A	B	C	D
LPV DA		974-7/8	250 (300-7/8)	
LNAV/VNAV DA		1069-1¼	345 (400-1¼)	
LNAV MDA	1120-1	396 (400-1)	1120-1½	396 (400-1½)
CIRCLING	1160-1 436 (500-1)	1180-1 456 (500-1)	1180-1½ 456 (500-1½)	1280-2 556 (600-2)

EC-3, 12 OCT 2017 to 09 NOV 2017

EC-3, 12 OCT 2017 to 09 NOV 2017

