

WAAS CH 70516 W12A	APP CRS 116°	Rwy Idg 5368 TDZE 16 Apt Elev 16
--	------------------------	---

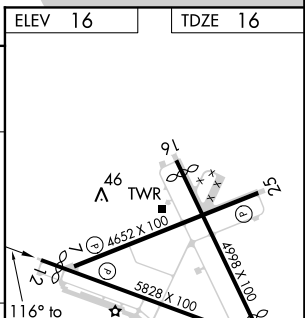
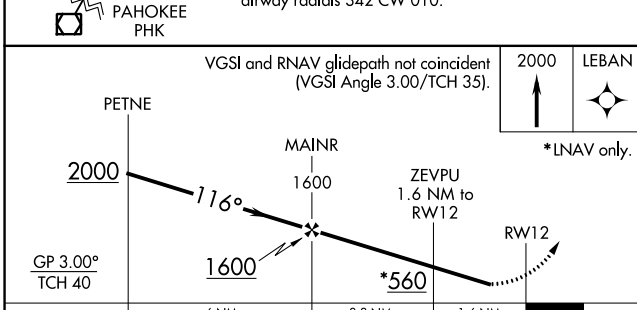
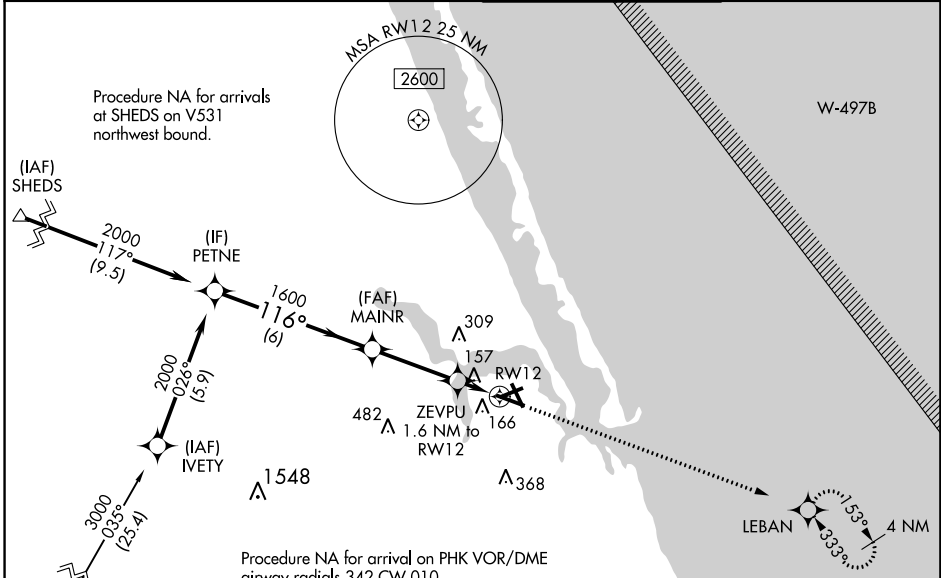
RNAV (GPS) RWY 12

WITHAM FIELD (SUA)

▼ Circling to Rwy 7 NA at night. Baro-VNAV NA when using Palm Beach Intl altimeter setting.
▲ For uncompensated Baro-VNAV systems, LNAV/VNAV NA below 4°C (40°F) or above 54°C (130°F). DME/DME RNP-0.3 NA. When local altimeter setting not received, use Palm Beach Intl altimeter setting and increase all DA 71 feet and all MDA 80 feet and increase LPV and LNAV/VNAV all Cats and LNAV Cats C and D visibility ¼ mile. Helicopter visibility reduction below ¾ SM NA.

MISSED APPROACH: Climb to 2000 direct LEBAN and hold.

ATIS 134.475	PALM BEACH APP CON 132.8	STUART TOWER ★ 126.6 (CTAF) 0	GND CON 121.7
------------------------	------------------------------------	---	-------------------------



CATEGORY	A	B	C	D
LPV DA		266-7/8	250 (300-7/8)	
LNAV/VNAV DA		449-1 1/2	433 (500-1 1/2)	
LNAV MDA	420-1	404 (500-1)	420-1 1/8	404 (500-1 1/8)
CIRCLING	480-1	464 (500-1)	480-1 1/2	580-2 564 (600-2)

REIL Rwy 12-30 0

MIRL Rwy 12-30 and 7-25 0

SE-3, 09 NOV 2017 to 07 DEC 2017

SE-3, 09 NOV 2017 to 07 DEC 2017

WAAS CH 77716 W30A	APP CRS 296°	Rwy Idg 5828 TDZE 16 Apt Elev 16
--	------------------------	---

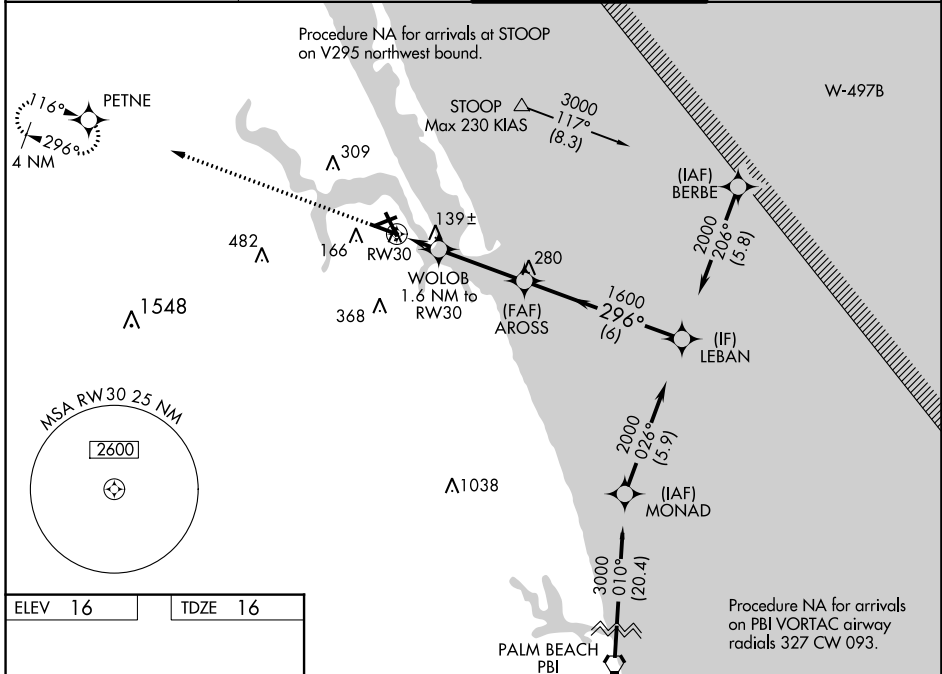
RNAV (GPS) RWY 30

WITHAM FIELD (SUA)

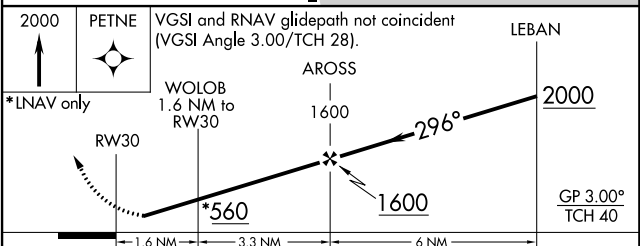
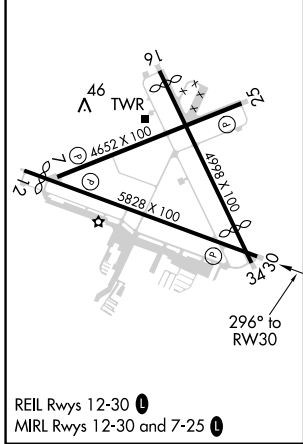
⚠ Circling to Rwy 07 NA at night. Baro-VNAV NA when using Palm Beach Intl altimeter setting. For uncompensated Baro-VNAV systems, LNAV/VNAV NA below 4°C (40°F) or above 54°C (130°F). DME/DME RNP-0.3 NA. Helicopter visibility reduction below ¼ SM NA. When local altimeter setting not received, use Palm Beach Intl altimeter setting and increase all DA 71 feet and all MDA 80 feet and increase LPV and LNAV/VNAV all Cats and LNAV Cats C/D visibility ¼ mile.

⚠ MISSED APPROACH: Climb to 2000 direct PETNE and hold.

ATIS 134.475	PALM BEACH APP CON 132.8	STUART TOWER ★ 126.6 (CTAF) 0	GND CON 121.7
------------------------	------------------------------------	---	-------------------------



ELEV 16	TDZE 16
---------	---------



CATEGORY	A	B	C	D
LPV DA		266-7/8	250 (300-7/8)	
LNAV/VNAV DA		404-13/8	388 (400-13/8)	
LNAV MDA	400-1	384 (400-1)	400-1 1/8	384 (400-1 1/8)
CIRCLING	480-1	464 (500-1)	480-1 1/2 464 (500-1 1/2)	580-2 564 (600-2)

SE-3, 09 NOV 2017 to 07 DEC 2017

SE-3, 09 NOV 2017 to 07 DEC 2017