

APP CRS	Rwy Idg	4671
221°	TDZE	17
	Apt Elev	19

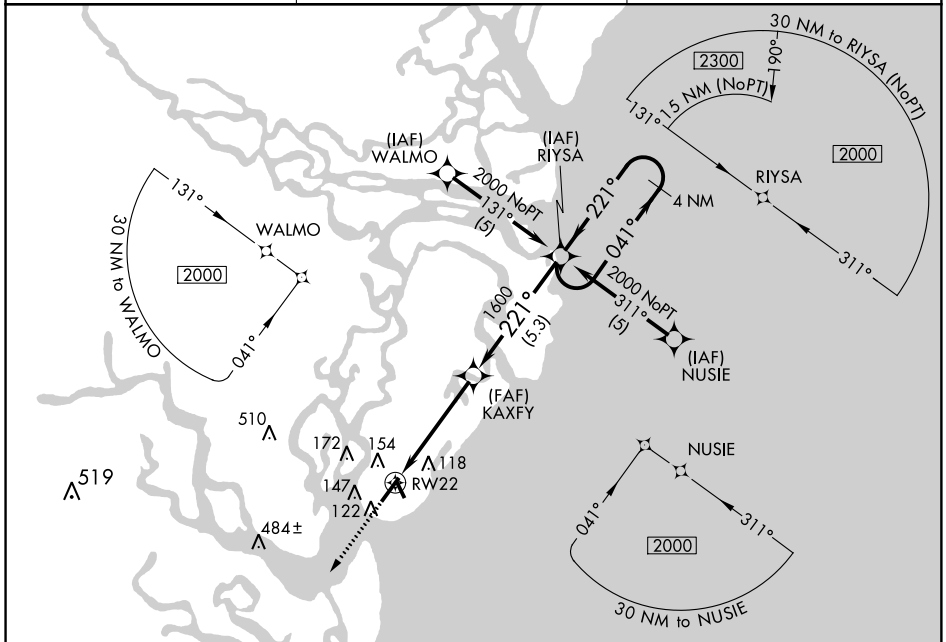
RNAV (GPS) RWY 22

McKINNON ST SIMONS ISLAND (SSI)

NA GPS or RNP-0.3 Required. DME/DME RNP-0.3 NA. If local altimeter setting not received, use Jacksonville Intl altimeter setting and increase all MDAs 100 feet.

MISSED APPROACH: Climb to 2000 direct VIXRY WP and hold.

ASOS 120.025	JACKSONVILLE CENTER 126.75 277.4	UNICOM 123.05 (CTAF)
------------------------	--	--------------------------------

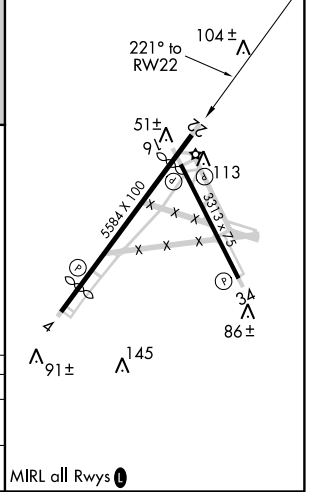


SE-4, 07 DEC 2017 to 04 JAN 2018

SE-4, 07 DEC 2017 to 04 JAN 2018



ELEV 19	D TDZE 17
---------	------------------



2000	VIXRY	VGSI and descent angles not coincident (VGSI Angle 4.00/TCH 54).
4 NM Holding Pattern		
RW22	KAXFY	RIYSA
4.7 NM	5.3 NM	4 NM
3.05° TCH 54	221°	041°
1600	1600	2000

CATEGORY	A	B	C	D
LNVA MDA	460-1	443 (500-1)	460-1¼ 443 (500-1¼)	460-1½ 443 (500-1½)
CIRCLING	460-1 441 (500-1)	480-1 461 (500-1)	480-1½ 461 (500-1½)	580-2 561 (600-2)

MIRL all Rwys **D**

APP CRS	Rwy Idg	4798
041°	TDZE	16
	Apt Elev	19

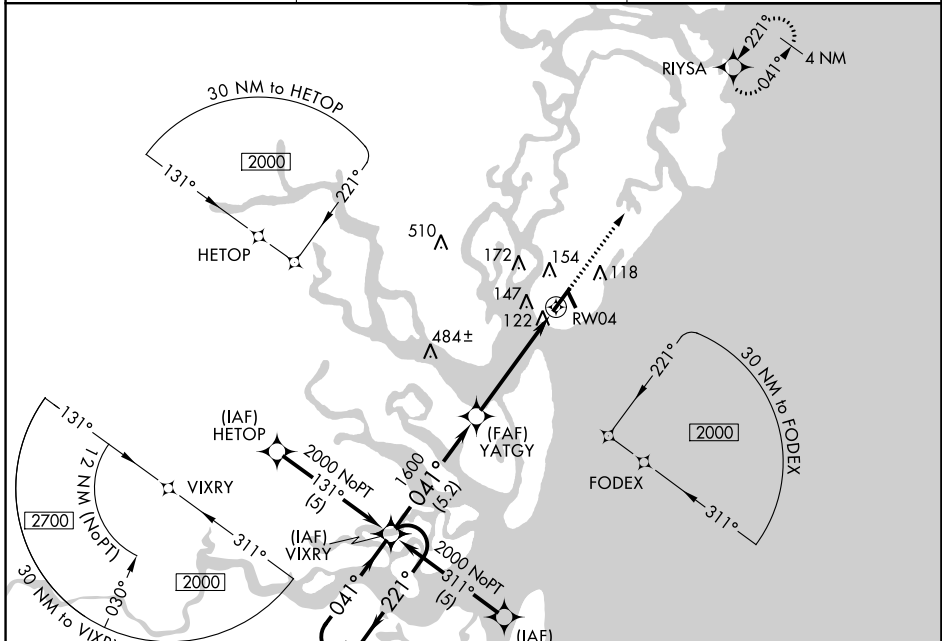
RNAV (GPS) RWY 4

McKINNON ST SIMONS ISLAND (SSI)

NA GPS or RNP-0.3 Required. DME/DME RNP-0.3 NA. If local altimeter setting not received, use Jacksonville Intl altimeter setting and increase all MDA's 100 feet.

MISSED APPROACH: Climb to 2000 direct RIYSA WP and hold.

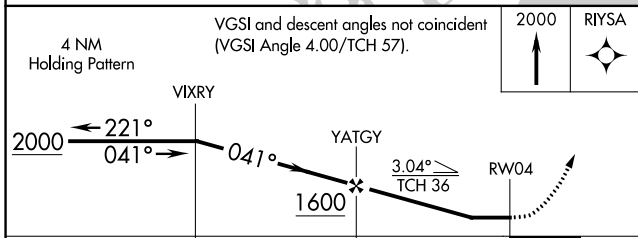
ASOS 120.025	JACKSONVILLE CENTER 126.75 277.4	UNICOM 123.05 (CTAF) 0
------------------------	--	----------------------------------



4 NM Holding Pattern

VGSI and descent angles not coincident (VGSI Angle 4.00/TCH 57).

2000 RIYSA



ELEV 19	D TDZE 16
---------	------------------

This diagram shows the final approach segment to RWY 4, including:

- A 558± x 100 obstacle.
- Altitudes of 51±, 22, 113, 34, 86±, 91±, and 145.
- A 041° to RW04 angle.

CATEGORY	A	B	C	D
LNVA MDA	420-1	404 (500-1)	420-1¼	404 (500-1¼)
CIRCLING	460-1 441 (500-1)	480-1 461 (500-1)	480-1½ 461 (500-1½)	580-2 561 (600-2)

MIRL all Rwys 0

SE-4, 07 DEC 2017 to 04 JAN 2018

SE-4, 07 DEC 2017 to 04 JAN 2018

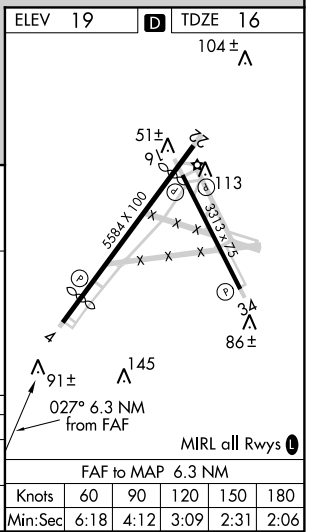
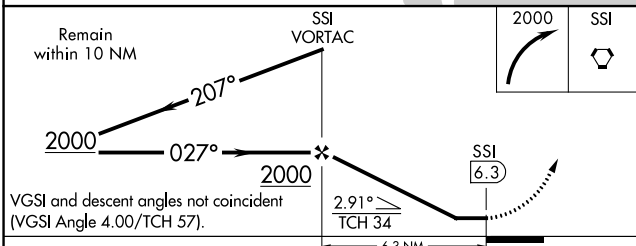
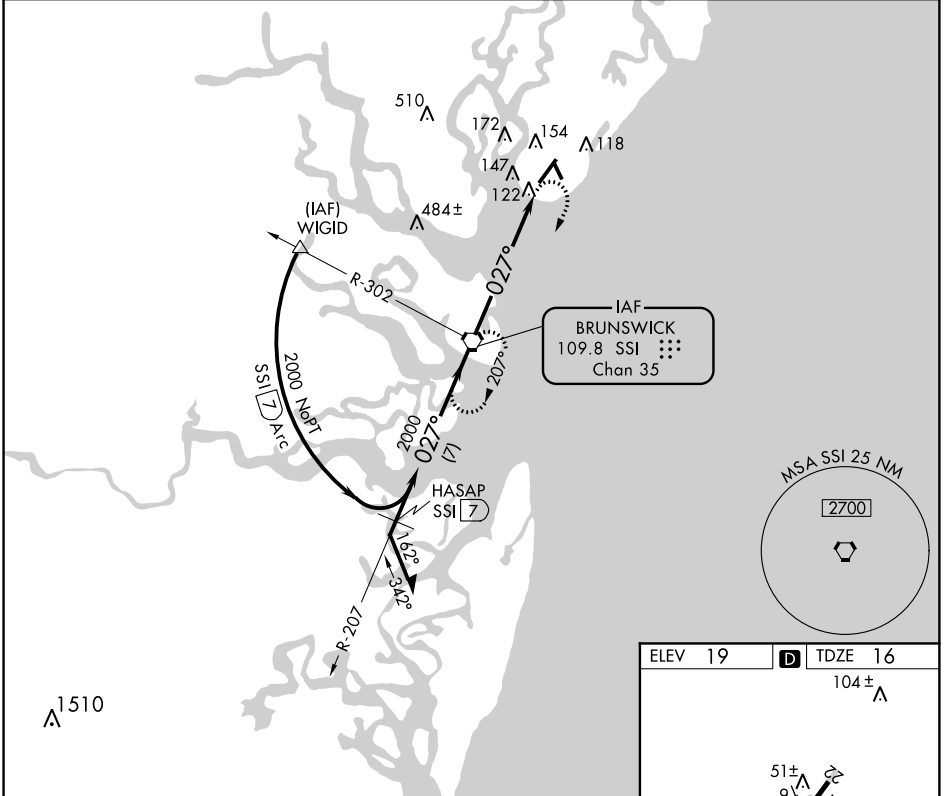
VORTAC SSI 109.8 Chan 35	APP CRS 027°	Rwy Idg TDZE Apt Elev	4798 16 19
--	------------------------	-----------------------------	---------------------------------------

VOR RWY 4
MCKINNON ST SIMONS ISLAND (SSI)

▽ If local altimeter setting not received, use Jacksonville Intl altimeter setting and increased all MDAs 100 ft.

MISSED APPROACH: Climbing right turn to 2000 direct SSI VORTAC and hold.

ASOS 120.025	JACKSONVILLE CENTER 126.75 277.4	UNICOM 123.05 (CTAF) 0
------------------------	--	----------------------------------



CATEGORY	A	B	C	D
S-4	500-1	484 (500-1)	500-1½ 484 (500-1¼)	500-1½ 484 (500-1½)
CIRCLING	500-1	481 (500-1)	500-1½ 481 (500-1½)	580-2 561 (600-2)

SE-4, 07 DEC 2017 to 04 JAN 2018

SE-4, 07 DEC 2017 to 04 JAN 2018