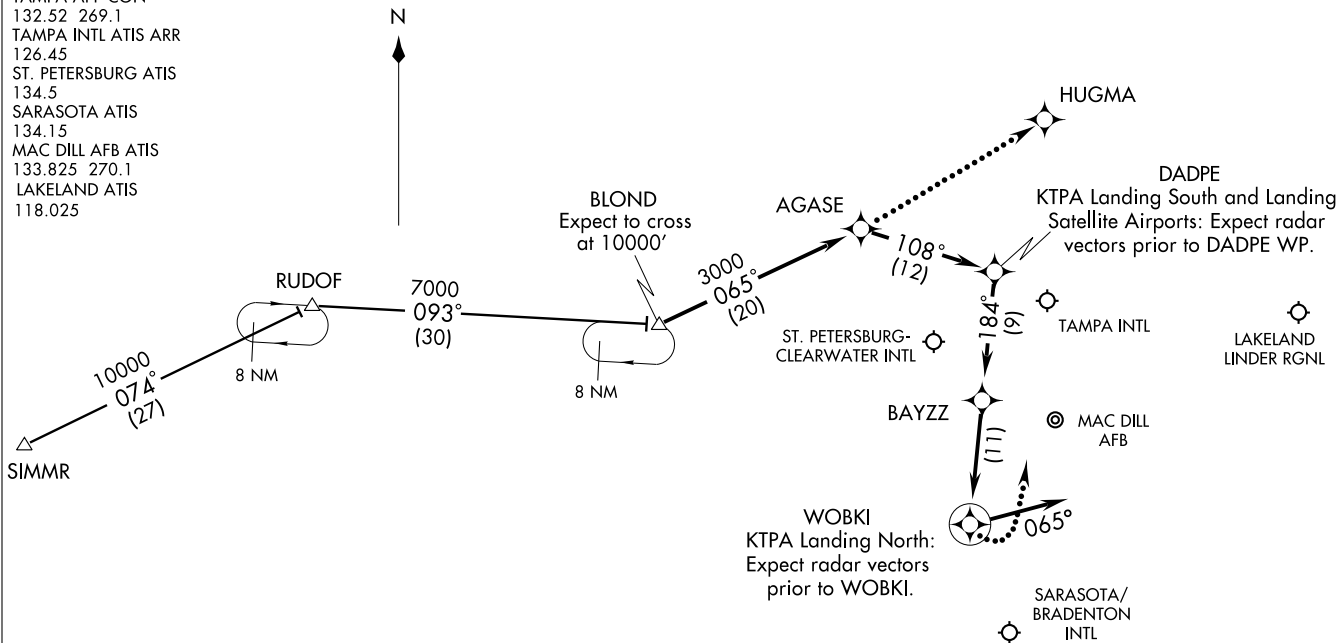


BLOND ONE ARRIVAL (RNAV)
(BLOND.BLOND1) 08157

TAMPA APP CON
132.52 269.1
TAMPA INTL ATIS ARR
126.45
ST. PETERSBURG ATIS
134.5
SARASOTA ATIS
134.15
MAC DILL AFB ATIS
133.825 270.1
LAKELAND ATIS
118.025



(BLOND.BLOND1) 08157
BLOND ONE ARRIVAL (RNAV)

ST-416 (FAA)

TAMPA, FLORIDA

- NOTE: For non-GPS equipped aircraft, PIE must be operational.
NOTE: Primary landing runways 36L/R, 18L/R.
NOTE: DME/DME/IRU or GPS Required.
NOTE: Turbojet/Turboprop aircraft only.
NOTE: Radar Required.
NOTE: RNAV 1.
NOTE: Chart not to scale.

SIMMR TRANSITION (SIMMR.BLOND1):

From over BLOND WP via 065° track to AGASE WP, thence as depicted to WOBKI WP, then via 065° heading. Expect radar vectors.

LOST COMMUNICATIONS:

KTPA Landing North: Continue track to WOBKI WP, then turn left to intercept the Runway 36L final approach course, conduct approach.

KTPA Landing South: Continue track to AGASE WP, then proceed direct HUGMA WP, conduct RNAV (GPS) Rwy 18R approach.

TAMPA, FLORIDA

CLAMP FIVE ARRIVAL (CLAMP.CLAMP5)

SARASOTA-BRADENTON, FLORIDA

TAMPA APP CON
119.65 353.575
SARASOTA ATIS
134.15

SEMINOLE
117.5 SZW
Chan 122
N30°33.37'
W84°22.44'
L-21-22, H-8

VALDOSTA
114.8 OTK
Chan 95

HEVVN
N29°49.32'
W83°53.71'

CROSS CITY
112.0 CTY
Chan 57

CLAMP
N29°20.76'
W83°35.36'

LINKN
N28°54.64'
W83°21.32'

BOATS
N28°22.87' - W83°04.42'
TURBOPROP VERTICAL NAVIGATION
PLANNING INFORMATION
Expect clearance to cross at 13000'.

WALTR
N28°04.70' - W82°54.84'
TURBOJET VERTICAL NAVIGATION
PLANNING INFORMATION
Expect clearance to cross at 13000'.

ST. PETERSBURG
116.4 PIE
Chan 111

SARASOTA
117.0 SRQ
Chan 117
N27°24.42' - W82°33.82'

VENICE MUNI

NOTE: DME Required.

NOTE: Chart not to scale.

SEMINOLE TRANSITION (SZW.CLAMP5): From over SZW VORTAC via SZW R-148 to CLAMP INT. Thence. . . .

. . . .From over CLAMP INT via SRQ R-337 to SRQ VORTAC. Expect radar vectors to final approach course after WALTR.

CLAMP FIVE ARRIVAL (CLAMP.CLAMP5)

SARASOTA-BRADENTON, FLORIDA