

SARASOTA THREE DEPARTURE

SEMINOLE
117.5 SZW
Chan 122
N30°33.37'-W84°22.44'
L-21-22, H-8

TAYLOR
112.9 TAY
Chan 76
N30°30.28'-W82°33.17'
L-21-24, H-8

SRQ ATIS 134.15
CLNC DEL 118.25
SRQ GND CON
121.9 269.7
SARASOTA TOWER ★
120.1 (CTAF)
TAMPA DEP CON
119.65 353.575
TPA DEP ATIS
128.475

CROSS CITY
112.0 CTY
Chan 57
N29°35.94'-W83°02.92'
L-21-24, H-8

GATORS
116.2 GNV
Chan 109
N29°41.53'-W82°16.38'
L-21-24, H-8

ST PETERSBURG
116.4 PIE
Chan 111
N27°54.47'-W82°41.06'
L-21-24, H-8

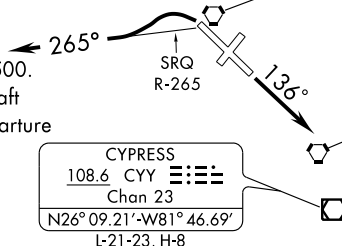
LAKELAND
116.0 LAL
Chan 107
N27°59.17'-W82°00.83'
L-21-24, H-8

ORLANDO
112.2 ORL
Chan 59
N28°32.56'-W81°20.10'
L-21-23-24, H-8

SARASOTA
117.0 SRQ
Chan 117
N27°24.42'-W82°33.82'
L-21-23, H-8

TAKE-OFF MINIMUMS:

Rwys 4, 22, NA - ATC
Rwy 14, STANDARD
Rwy 32, ATC climb
of 500 feet per NM to 500.
Rwy 32, Turbo-Jet aircraft
do not turn prior to departure
end of rwy.



CYPRESS
108.6 CYY
Chan 23
N26°09.21'-W81°46.69'
L-21-23, H-8

LEE COUNTY
111.8 RSW
Chan 55
N26°31.79'-W81°46.55'
L-21-23, H-8

NOTE: RADAR Required.
NOTE: Chart not scale.

SE-3, 19 NOV 2009 to 17 DEC 2009

SE-3, 19 NOV 2009 to 17 DEC 2009



DEPARTURE ROUTE DESCRIPTION

TAKE-OFF RUNWAY 14: Climb heading 136°. Expect radar vectors to join assigned route, thence....
TAKE-OFF RUNWAY 32: Climbing left turn to intercept SRQ R-265 westbound or as assigned by ATC. Expect radar vectors to join assigned route, thence....

....maintain 3000 or ATC assigned altitude. Expect clearance to filed altitude ten (10) minutes after departure.

NOTE: Rwy 14: Multiple trees beginning 345 feet from DER, 277 feet right of centerline, up to 69 feet AGL/94 feet MSL. Multiple trees beginning 119 feet from DER, 365 feet left of centerline, up to 30 feet AGL/55 feet MSL. Railroad 431 feet from DER, 533 feet left of centerline, 24 feet AGL/44 feet MSL.

NOTE: Rwy 32: Multiple trees beginning 606 feet from DER, 2 feet right of centerline, up to 51 feet AGL/71 feet MSL. Multiple trees beginning 775 feet from DER, 113 feet left of centerline, up to 68 feet AGL/88 feet MSL. Wall 119 feet from DER, 465 feet left of centerline, 29 feet AGL/49 feet MSL. Pole 945 feet from DER, 531 feet left of centerline, 41 feet AGL/61 feet MSL. Antenna 732 feet from DER, 168 feet left of centerline, 34 feet AGL/54 feet MSL. Vehicle on road 675 feet from DER, 277 feet left of centerline, 17 feet AGL/51 feet MSL. Light pole 837 feet from DER, 326 feet left of centerline, 34 feet AGL/54 feet MSL. Tower 5,674 feet from DER, 1,845 feet left of centerline, 162 feet AGL/177 feet MSL.