

APP CRS <b>297°</b>	Rwy Idg TDZE Apt Elev	<b>2600</b> <b>5</b> <b>5</b>
------------------------	-----------------------------	-------------------------------------

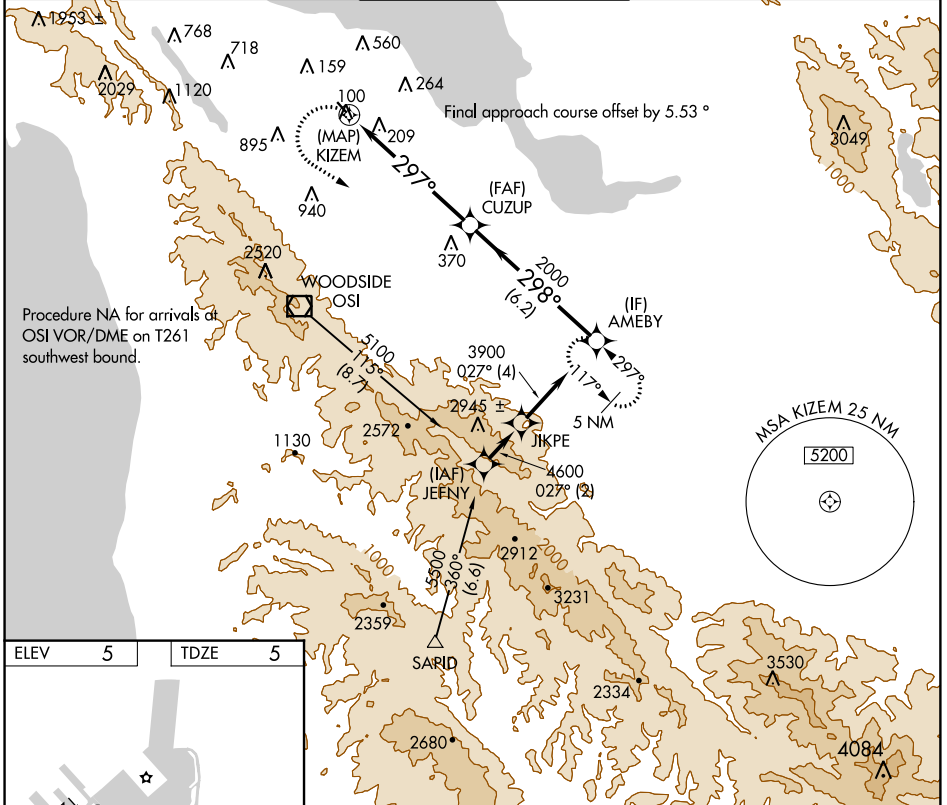
# RNAV (GPS) Y RWY 30

SAN CARLOS (SQL)

**▼** DME/DME RNP-0.3 NA. When local altimeter setting not received, use San Francisco Intl altimeter setting and increase all MDA 40 feet.  
**▲** Rwy 30 visibility reduction by helicopters below 1 SM NA. Circling NA west of Rwy 12-30.

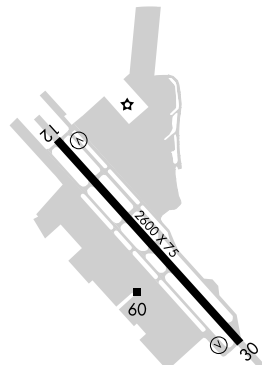
**MISSED APPROACH:** Climbing left turn to 5400 direct AMEBY and hold, continue climb-in-hold to 5400.

ATIS <b>125.9</b>	NORCAL APP CON <b>133.95 317.6</b>	SAN CARLOS TOWER ★ <b>119.0 (CTAF) 0 326.2</b>	GND CON <b>121.6</b>	UNICOM <b>122.95</b>
----------------------	---------------------------------------	---	-------------------------	-------------------------

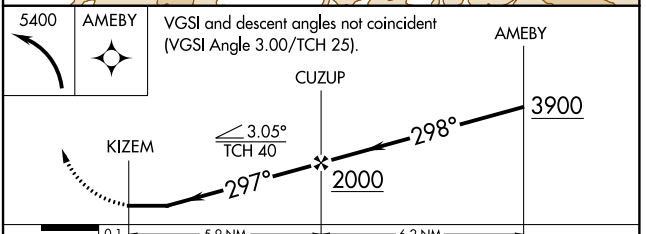


Procedure NA for arrivals at OSI VOR/DME on T261 southwest bound.

ELEV	5	TDZE	5
------	---	------	---



REIL Rwy 12 and 30 **①**  
MIRL Rwy 12-30 **②**



CATEGORY	A	B	C	D
LNAV MDA	1260-1 ¼	1255 (1300-1 ¼)		NA
CIRCLING	1260-1 ¼ 1255 (1300-1 ¼)	1260-1 ½ 1255 (1300-1 ½)		NA

SW-2, 17 AUG 2017 to 14 SEP 2017

SW-2, 17 AUG 2017 to 14 SEP 2017

APP CRS	Rwy Idg	<b>2600</b>
<b>297°</b>	TDZE	<b>5</b>
	Apt Elev	<b>5</b>

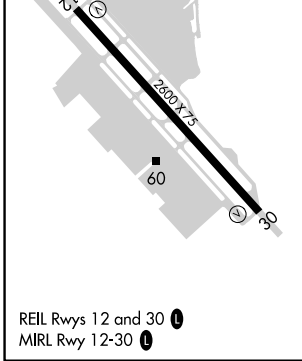
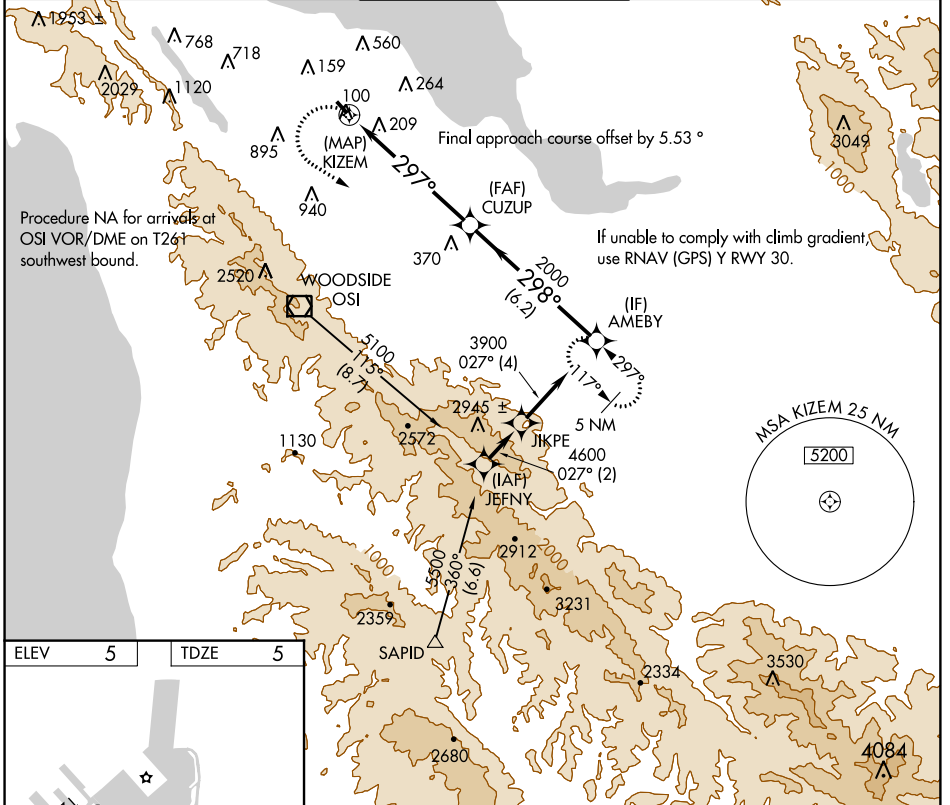
# RNAV (GPS) Z RWY 30

SAN CARLOS (SQL)

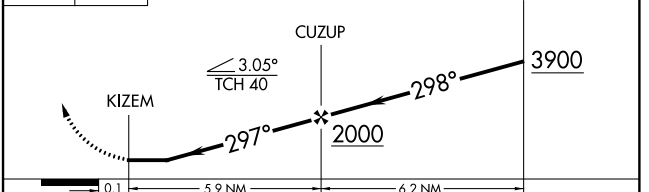
**⚠** DME/DME RNP-0.3 NA. When local altimeter setting not received, use San Francisco Intl altimeter setting and increase all MDA 40 feet. Rwy 30 visibility reduction by helicopters below 1 SM NA.

**⚠** MISSED APPROACH: Climbing left turn to 5400 direct AMEBY and hold, continue climb-in-hold to 5400. Missed approach requires minimum climb of 302 feet per NM to 5400.

ATIS <b>125.9</b>	NORCAL APP CON <b>133.95 317.6</b>	SAN CARLOS TOWER ★ <b>119.0 (CTAF) 0 326.2</b>	GND CON <b>121.6</b>	UNICOM <b>122.95</b>
----------------------	---------------------------------------	---	-------------------------	-------------------------



5400 AMEBY VGSi and descent angles not coincident (VGSi Angle 3.00/TCH 25).



CATEGORY	A	B	C	D
LNAV MDA	900-1¼ 895 (900-1¼)	900-1½ 895 (900-1½)	NA	

SW-2, 17 AUG 2017 to 14 SEP 2017

SW-2, 17 AUG 2017 to 14 SEP 2017