

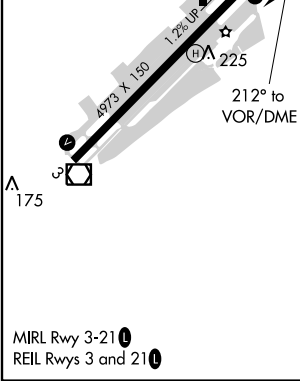
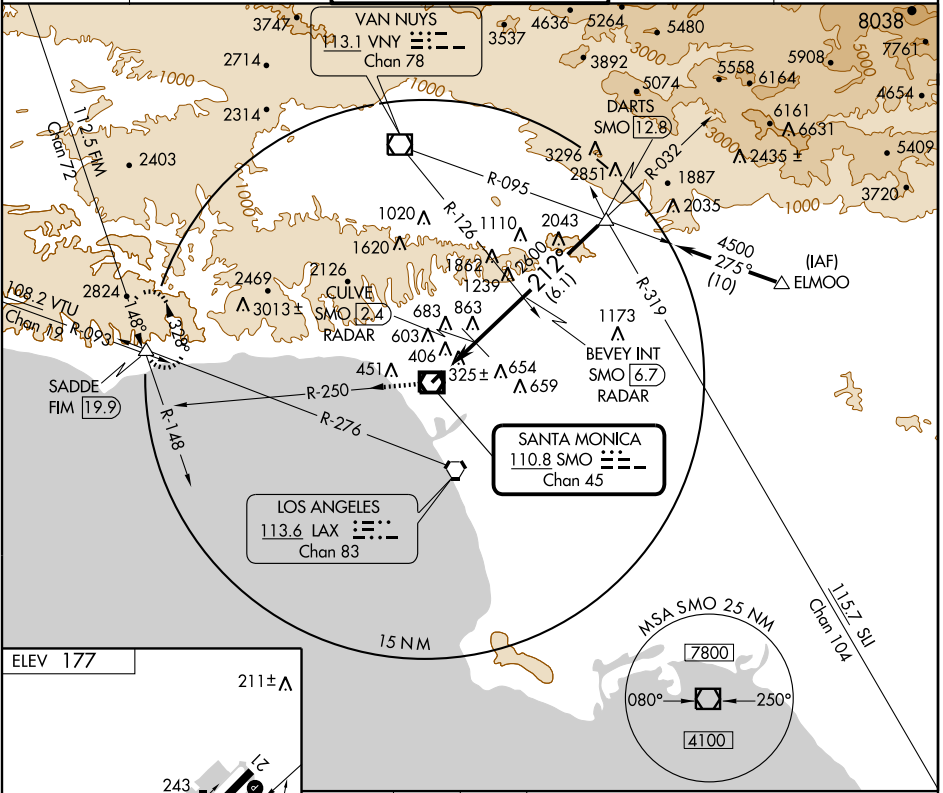
VOR or GPS-A SANTA MONICA MUNI (SMO)

VOR/DME SMO 110.8 Chan 45	APP CRS 212°	Rwy Idg TDZE Apt Elev N/A N/A 177
--	------------------------	---

⚠ Circling not authorized Northwest of Rwy 3-21.

⚠ MISSED APPROACH: Climb to 4300 via SMO R-250 and FIM R-148 to SADDE Int and hold, continue climb-in-hold to 4300.

ATIS 119.15	SOCAL APP CON 128.5 235.975	SANTA MONICA TOWER* 120.1 (CTAF) 257.8	GND CON 121.9	UNICOM 122.95
-----------------------	---------------------------------------	--	-------------------------	-------------------------



4300 SMO R-250 FIM R-148 112.5 SADDE △ BEVEY INT SMO [6.7] RADAR CULVE* SMO [2.4] RADAR DARTS SMO [12.8]	*When control tower closed, DME required.			
	2600	212°	4500	Procedure Turn NA
2.4 NM 4.3 NM 6.1 NM				
CATEGORY	A	B	C	D
CIRCLING	1120-1½	943 (1000-1¼)	1120-2¾ 943 (1000-2¾)	1120-3 943 (1000-3)
CULVE DME/RADAR MINIMA*				
CIRCLING	680-1	503 (600-1)	680-1½ 503 (600-1½)	740-2 563 (600-2)

SW-3, 19 NOV 2009 to 17 DEC 2009

SW-3, 19 NOV 2009 to 17 DEC 2009