

WAAS CH 86324 W01A	APP CRS 007°	Rwy Idg TDZE Apt Elev	5001 489 489
--	------------------------	-----------------------------	---

RNAV (GPS) RWY 1

SULPHUR SPRINGS MUNI (SLR)

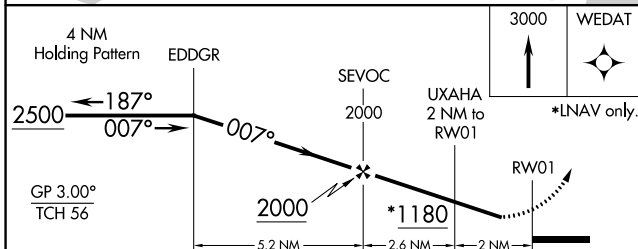
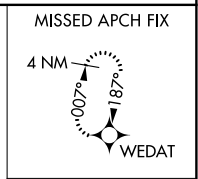
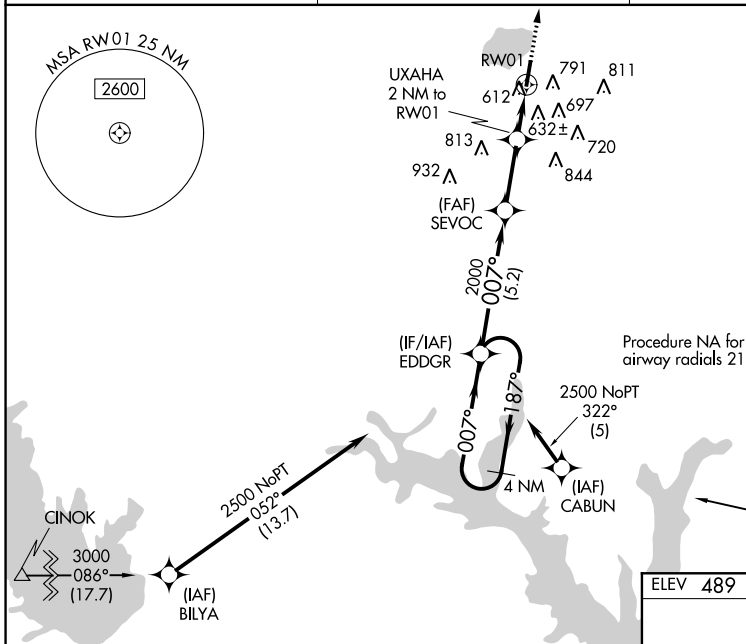
⚠ Baro-VNAV NA when using Paris altimeter setting. For uncompensated Baro-VNAV systems, LNAV/VNAV NA below -15°C (5°F) or above 54°C (130°F). When VGS1 inop, Straight-in/Circling Rwy 1 procedure NA at night. Circling NA east of Rwy 1-19. DME/DME RNP-0.3 NA. Visibility reduction by helicopters NA. When local altimeter setting not received, use Paris altimeter setting and increase all DA 77 feet and all MDA 80 feet, increase LPV and LNAV/VNAV all Cats visibility ¼ mile, LNAV Cat C visibility ⅓ mile and Circling Cat C visibility ¼ mile.

MISSED APPROACH: Climb to 3000 direct WEDAT and hold.

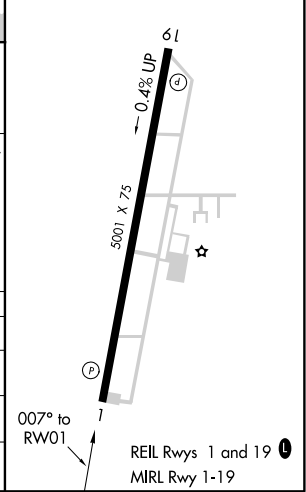
AWOS-3
118.35

FORT WORTH CENTER
132.025 360.75

UNICOM
123.075 (CTAF) **0**



ELEV 489	TDZE 489
----------	----------



CATEGORY	A	B	C	D
LPV DA	803-1	314 (400-1)		NA
LNAV/VNAV DA	975-1½	486 (500-1½)		NA
LNAV MDA	1000-1	511 (600-1)	1000-1⅜ 511 (600-1⅜)	NA
CIRCLING	1000-1	511 (600-1)	1000-1½ 511 (600-1½)	NA

SC-2, 22 JUN 2017 to 20 JUL 2017

SC-2, 22 JUN 2017 to 20 JUL 2017

WAAS CH 90323 W19A	APP CRS 187°	Rwy Idg TDZE 476 Apt Elev 489	5001
--	------------------------	---	-------------

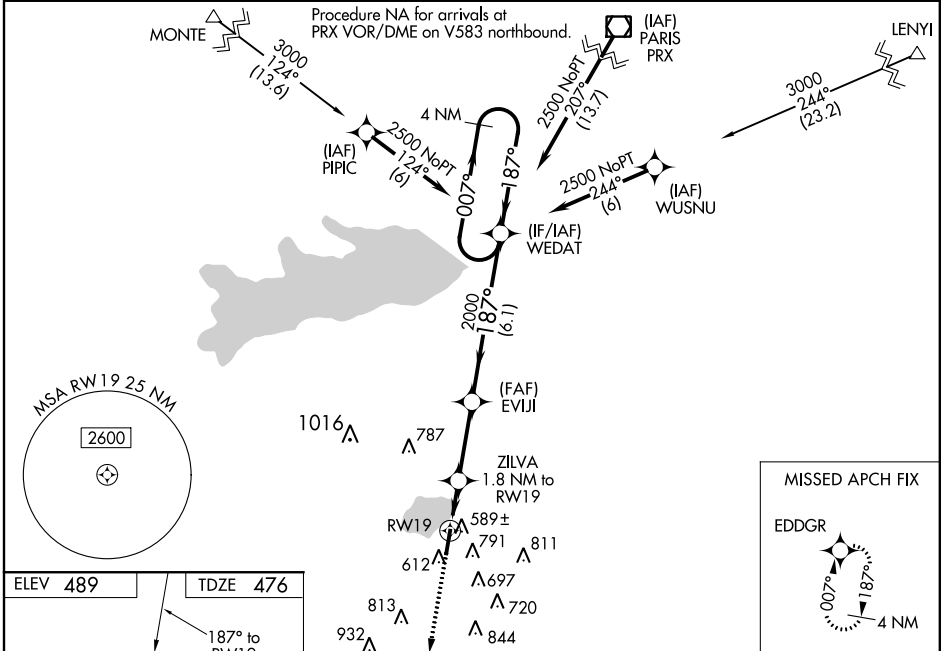
RNAV (GPS) RWY 19

SULPHUR SPRINGS MUNI (SLR)

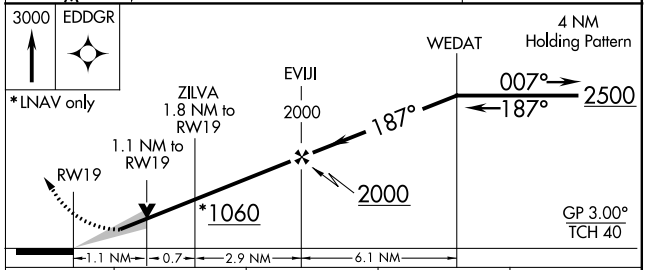
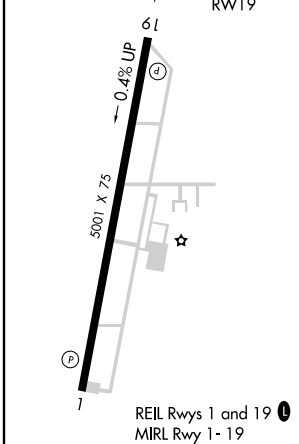
⚠ When VGSI inop, Circling Rwy 1 NA at night. For uncompensated Baro-VNAV systems, LNAV/VNAV NA below -15°C (5°F) or above 54°C (130°F). Circling NA east of Rwy 1-19. DME/DME RNP-0.3 NA. Baro-VNAV and VDP NA when using Paris altimeter setting. When local altimeter setting not received, use Paris altimeter setting and increase all DA 77 feet and all MDA 80 feet, increase LPV all Cats visibility 1/8 mile, LNAV/VNAV all Cats visibility 1/4 mile and LNAV Cat C visibility 3/8 mile.

⚠ MISSED APPROACH: Climb to 3000 direct EDDGR and hold.

AWOS-3 118.35	FORT WORTH CENTER 132.025 360.75	UNICOM 123.075 (CTAF) 0
-------------------------	--	--



ELEV 489	TDZE 476
----------	----------



CATEGORY	A	B	C	D
LPV DA		676-3/4	200 (200-3/4)	NA
LNAV/VNAV DA		776-1	300 (300-1)	NA
LNAV MDA		840-1	364 (400-1)	NA
CIRCLING	920-1 431 (500-1)	940-1 451 (500-1)	940-1 1/2 451 (500-1 1/2)	NA

SC-2, 22 JUN 2017 to 20 JUL 2017

SC-2, 22 JUN 2017 to 20 JUL 2017

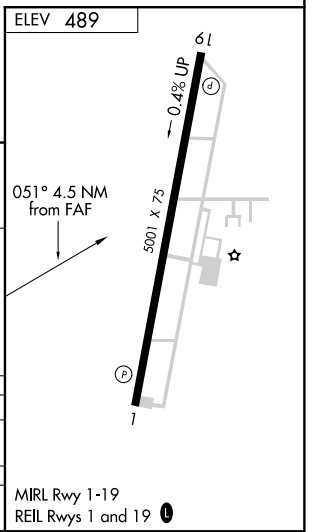
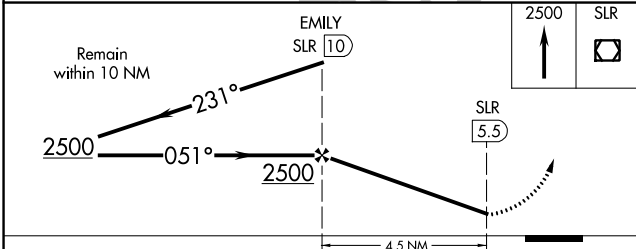
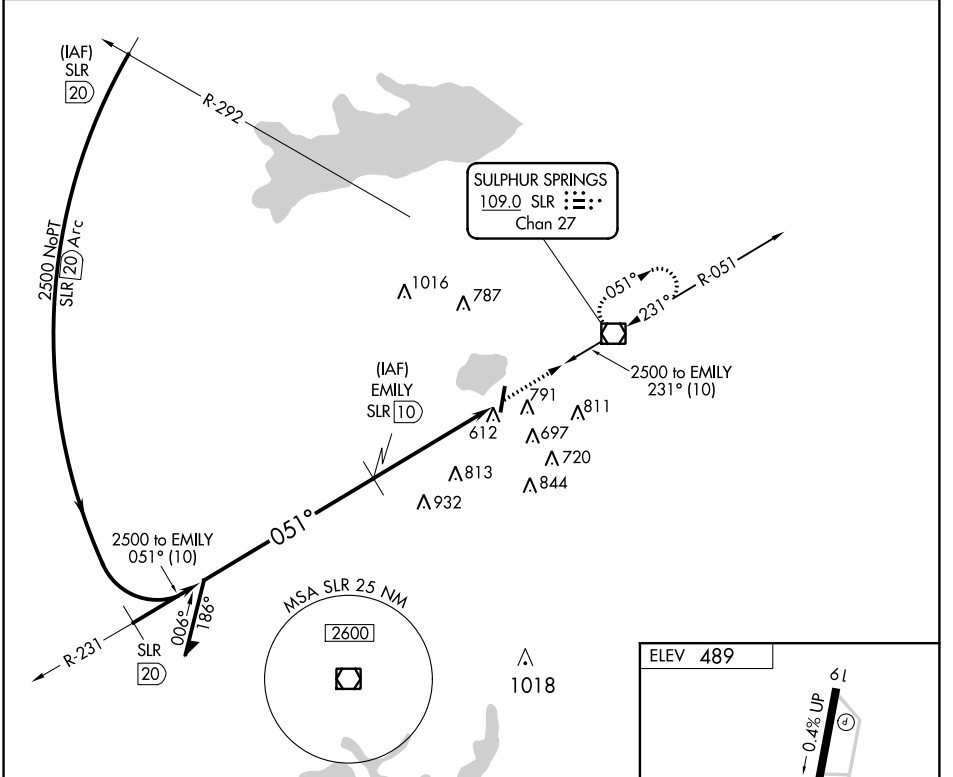
VOR/DME SLR 109.0 Chan 27	APP CRS 051°	Rwy Idg TDZE Apt Elev	N/A N/A 489
---	------------------------	-----------------------------	--

VOR/DME-B
SULPHUR SPRINGS MUNI (SLR)

▼ Obtain local climber setting on CTAF; when not received, use Cox Field altimeter setting.
▲ NA Circling not authorized east of Runway 1-19.

MISSED APPROACH: Climb to 2500 direct SLR VOR/DME and hold.

AWOS-3 118.35	FORT WORTH CENTER 132.025 360.75	UNICOM 123.075 (CTAF) 0
-------------------------	--	--



CATEGORY	A	B	C	D
CIRCLING	940-1 451 (500-1)	960-1 471 (500-1)	960-1½ 471 (500-1½)	NA
COX FIELD ALTIMETER SETTING MINIMUMS				
CIRCLING	1020-1 531 (600-1)	1040-1 551 (600-1)	1040-1½ 551 (600-1½)	NA

SC-2, 22 JUN 2017 to 20 JUL 2017

SC-2, 22 JUN 2017 to 20 JUL 2017