

(HOTAR.HOTAR1) 17229

AL-5570 (FAA)

# HOTAR ONE ARRIVAL (RNAV)

JACKSONVILLE, FLORIDA

JACKSONVILLE APP CON  
 119.0 127.0 322.4 335.6 (270°-090°)  
 123.8 377.05 (181°-269°)  
 124.9 308.4 (091°-180°)  
 CECIL ATIS 125.275  
 JACKSONVILLE EXECUTIVE AT CRAIG ATIS 125.4  
 JACKSONVILLE INTL D-ATIS 125.85  
 JACKSONVILLE NAS (TOWERS FIELD) ATIS 290.425  
 MAYPORT NS (ADM DAVID L MCDONALD FIELD) ATIS \* 236.775  
 NORTHEAST FLORIDA RGNL ATIS 119.625

## ARRIVAL ROUTE DESCRIPTION

### BASLE TRANSITION (BASLE.HOTAR1)

From JABOR on track 191° to HOTAR.

LANDING JAX: From HOTAR on track 263° to YEJWO.

Expect radar vectors to an ILS or LOC final approach course.

LANDING NRB and CRG: From HOTAR on track 210° to LESVE, then on 213° heading or as assigned by ATC.

Expect radar vectors to final approach course.

LANDING SGJ: From HOTAR on track 202° to HABIK, then on 203° heading or as assigned by ATC. Expect radar vectors to final approach course.

LANDING VQQ and NIP: From HOTAR on track 202° to HEBIN, then on 253° heading or as assigned by ATC. Expect radar vectors to final approach course.

NOTE: YEJWO Transition-ATC assigned only.

JACKSONVILLE INTL

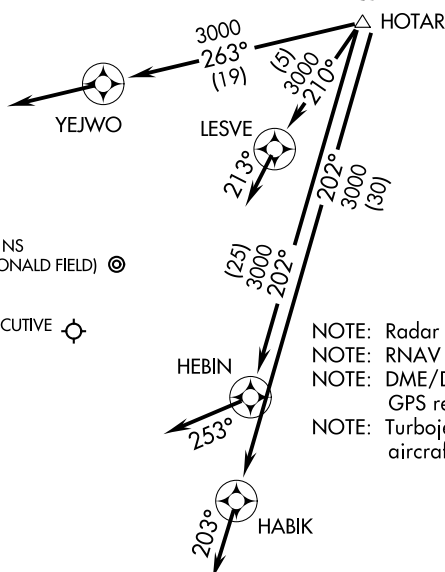
MAYPORT NS  
(ADM DAVID L MCDONALD FIELD)

JACKSONVILLE EXECUTIVE  
AT CRAIG

JACKSONVILLE NAS  
(TOWERS FIELD)

CECIL

NORTHEAST FLORIDA  
RGNL



NOTE: Radar required.  
 NOTE: RNAV 1.  
 NOTE: DME/DME/IRU or GPS required.  
 NOTE: Turbojet and turboprop aircraft only.

NOTE: Chart not to scale.

SE-3, 12 OCT 2017 to 09 NOV 2017

SE-3, 12 OCT 2017 to 09 NOV 2017

# HOTAR ONE ARRIVAL (RNAV)

(HOTAR.HOTAR1) 17OCT13

JACKSONVILLE, FLORIDA