

LOC I-SOU 110.1	APP CRS 013°	Rwy Idg 12366 TDZE 1180 Apt Elev 1221
---------------------------	------------------------	--

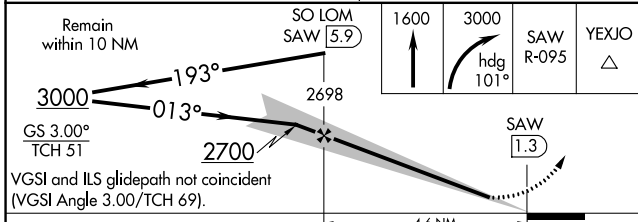
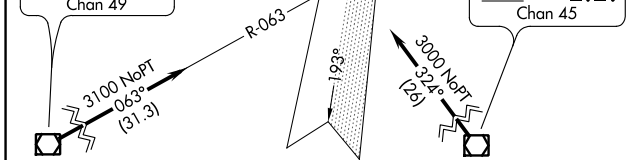
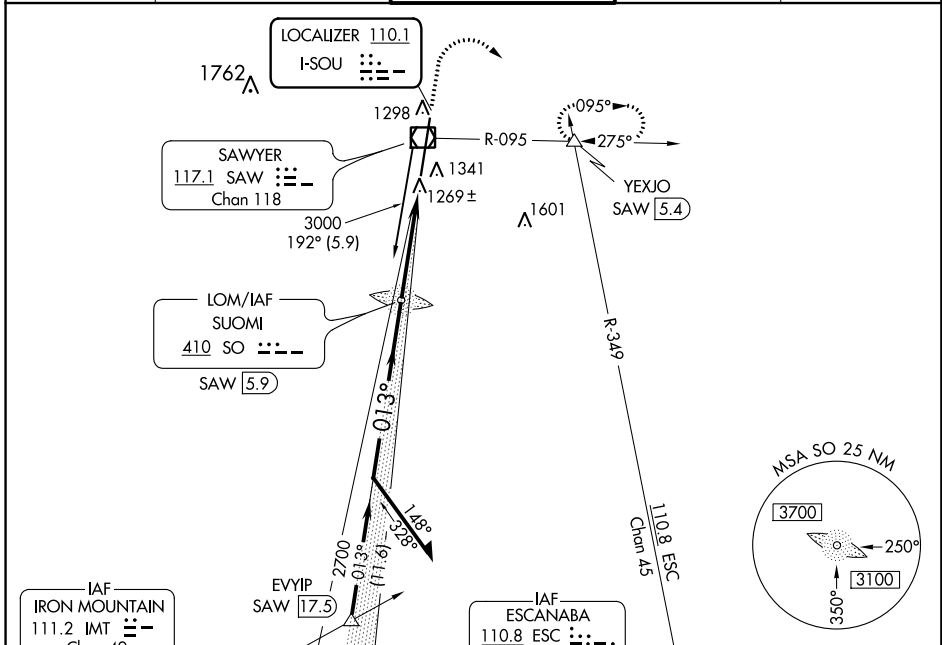
ILS or LOC RWY 1

SAWYER INTL (SAW)

⚠ Autopilot coupled approach NA below 1360 MSL. When local altimeter setting not received, use Ford altimeter setting and increase all DA 107 feet and all MDA 120 feet, increase S-LOC 1 Cat C/D visibility ¼ mile. For inoperative MASLR when using Ford altimeter setting, increase S-ILS 1 visibility all Cats to 1.

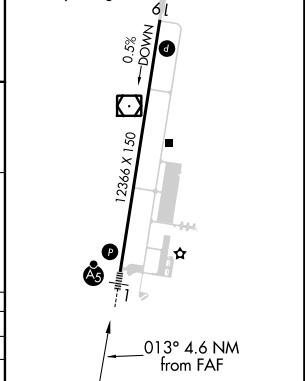
MALSRL MISSED APPROACH: Climb to 1600, then climbing right turn to 3000 via heading 101° and SAW R-095 to YEXJO INT and hold.

AWOS-3 118.375	MINNEAPOLIS CENTER 119.1 290.2	SAWYER TOWER ★ 119.975 (CTAF) 1	GND CON 121.65	UNICOM 122.7
--------------------------	--	---	--------------------------	------------------------



ELEV 1221	D	TDZE 1180
-----------	----------	-----------

HIRL Rwy 1-19 **1**
REIL Rwy 19 **1**



CATEGORY	A	B	C	D
S-ILS 1	1380-½ 200 (200-½)			
S-LOC 1	1540-½ 360 (400-½)		1540-¾ 360 (400-¾)	
CIRCLING	1720-1 499 (500-1)		1720-1½ 499 (500-1½)	
			1780-2 559 (600-2)	

FAF to MAP 4.6 NM				
Knots	60	90	120	150 180
Min:Sec	4:36	3:04	2:18	1:50 1:32

EC-1, 14 SEP 2017 to 12 OCT 2017


EC-1, 14 SEP 2017 to 12 OCT 2017

WAAS CH 97431 W01A	APP CRS 013°	Rwy Idg 12366 TDZE 1180 Apt Elev 1221
--	------------------------	--


RNAV (GPS) RWY 1

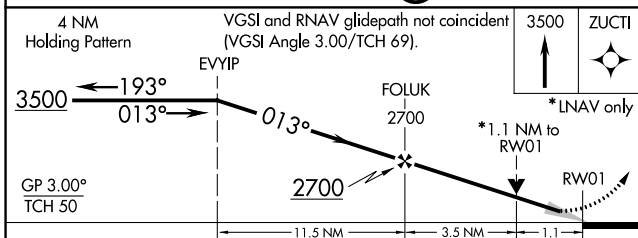
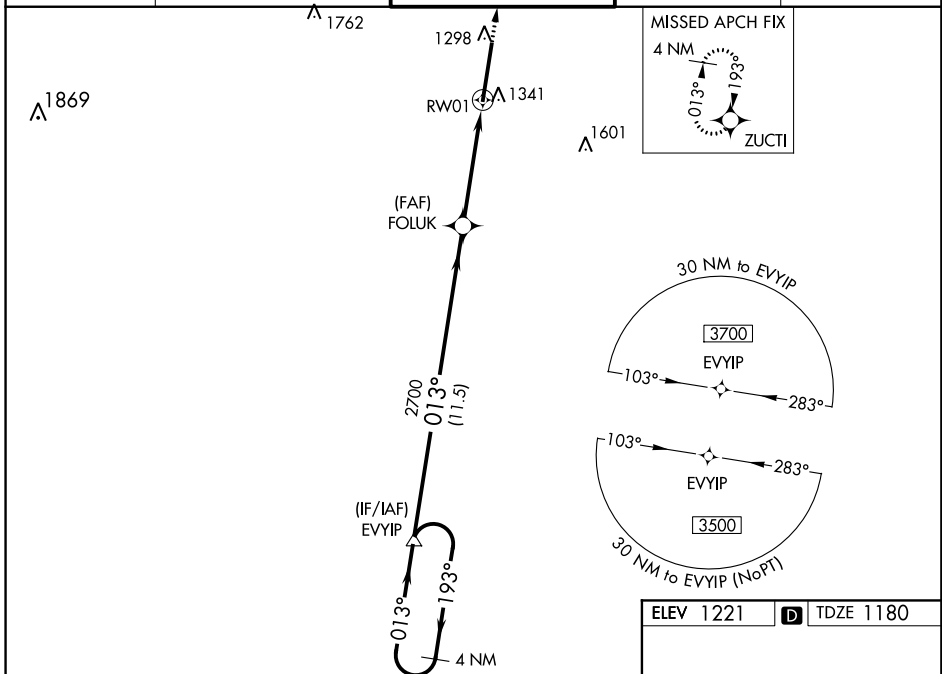
SAWYER INTL (SAW)

⚠ For uncompensated Baro-VNAV systems, LNAV/VNAV NA below -17°C (2°F) or above 54°C (130°F). DME/DME RNP-0.3 NA. VDP and Baro-VNAV NA with Ford altimeter setting. When local altimeter setting not received, use Ford altimeter setting: increase all DA 107 feet and LNAV/VNAV visibility all Cats 3/8 mile; increase all MDA 120 feet, LNAV visibility Cats C and D 3/8 mile and Circling visibility Cats C and D 1/4 mile. For inoperative MALSR; when using Ford altimeter setting, increase LPV all Cats visibility to 1 mile.

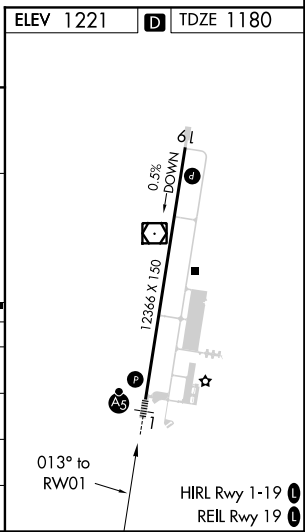
MALSR 

MISSED APPROACH:
Climb to 3500 direct ZUCTI and hold.

AWOS-3 118.375	MINNEAPOLIS CENTER 119.1 290.2	SAWYER TOWER ★ 119.975 (CTAF) 	GND CON 121.65	UNICOM 122.7
--------------------------	--	---	--------------------------	------------------------



CATEGORY	A	B	C	D
LPV DA		1380-1/2	200 (200-1/2)	
LNAV/VNAV DA		1504-5/8	324 (300-3/8)	
LNAV MDA	1600-1/2	420 (400-1/2)	1600-3/4	420 (400-3/4)
CIRCLING	1720-1	499 (500-1)	1720-1 1/2	1780-2
			499 (500-1 1/2)	559 (600-2)



EC-1, 14 SEP 2017 to 12 OCT 2017

EC-1, 14 SEP 2017 to 12 OCT 2017

WAAS CH 86616 W19A	APP CRS 193°	Rwy Idg 12366 TDZE 1221 Apt Elev 1221
---------------------------------	------------------------	--

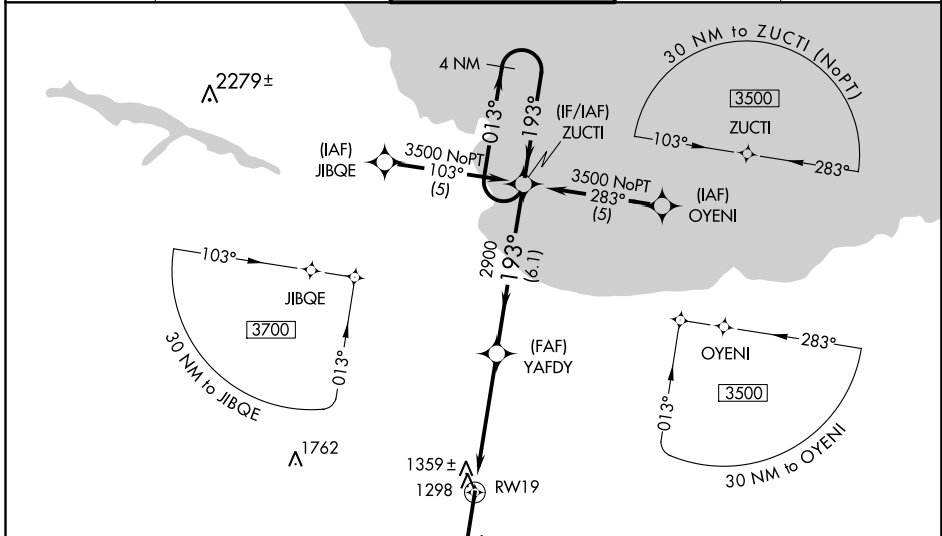
RNAV (GPS) RWY 19

SAWYER INTL (SAW)

⚠ DME/DME RNP-0.3 NA. Baro-VNAV NA when using Ford altimeter setting.
⚠ For uncompensated Baro-VNAV systems, LNAV/VNAV NA below -17°C (2°F) or above 46°C (114°F). VDP NA when using Ford altimeter setting.
 When local altimeter setting not received, use Ford altimeter setting and increase all DA 107 feet and all MDA 120 feet, LPV all Cats visibility ¼ mile, LNAV/VNAV and LNAV Cat C and D visibility ½ mile, and Circling Cat C and D visibility ¼ mile.

MISSED APPROACH: Climb to 3500 direct EVYIP and hold.

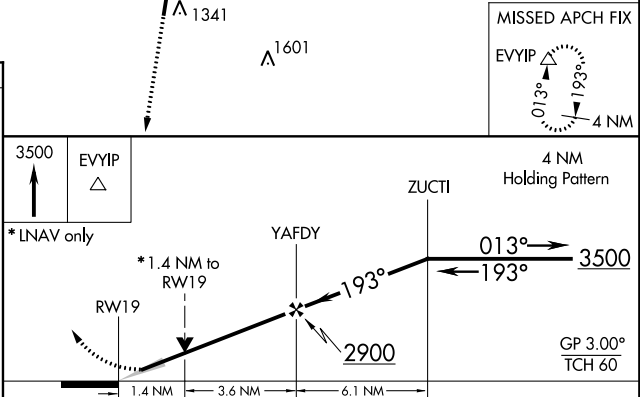
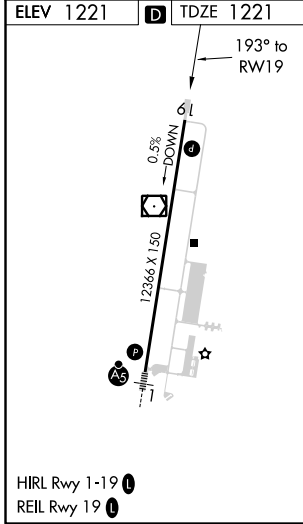
AWOS-3 118.375	MINNEAPOLIS CENTER 119.1 290.2	SAWYER TOWER ★ 119.975 (CTAF) 1	GND CON 121.65	UNICOM 122.7
--------------------------	--	--	--------------------------	------------------------



EC-1, 14 SEP 2017 to 12 OCT 2017

EC-1, 14 SEP 2017 to 12 OCT 2017

ELEV 1221	D	TDZE 1221
-----------	----------	-----------



CATEGORY	A	B	C	D
LPV DA		1421-¾	200 (200-¾)	
LNAV/VNAV DA		1665-1½	444 (500-1½)	
LNAV MDA	1720-1	499 (500-1)	1720-1¼ 499 (500-1¼)	1720-1½ 499 (500-1½)
CIRCLING	1720-1	499 (500-1)	1720-1½ 499 (500-1½)	1780-2 559 (600-2)

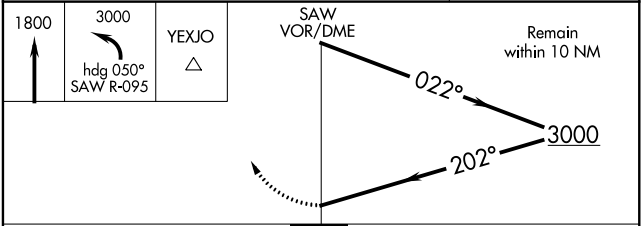
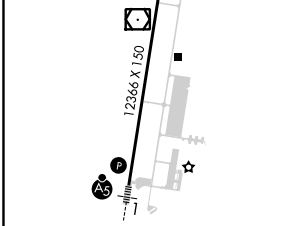
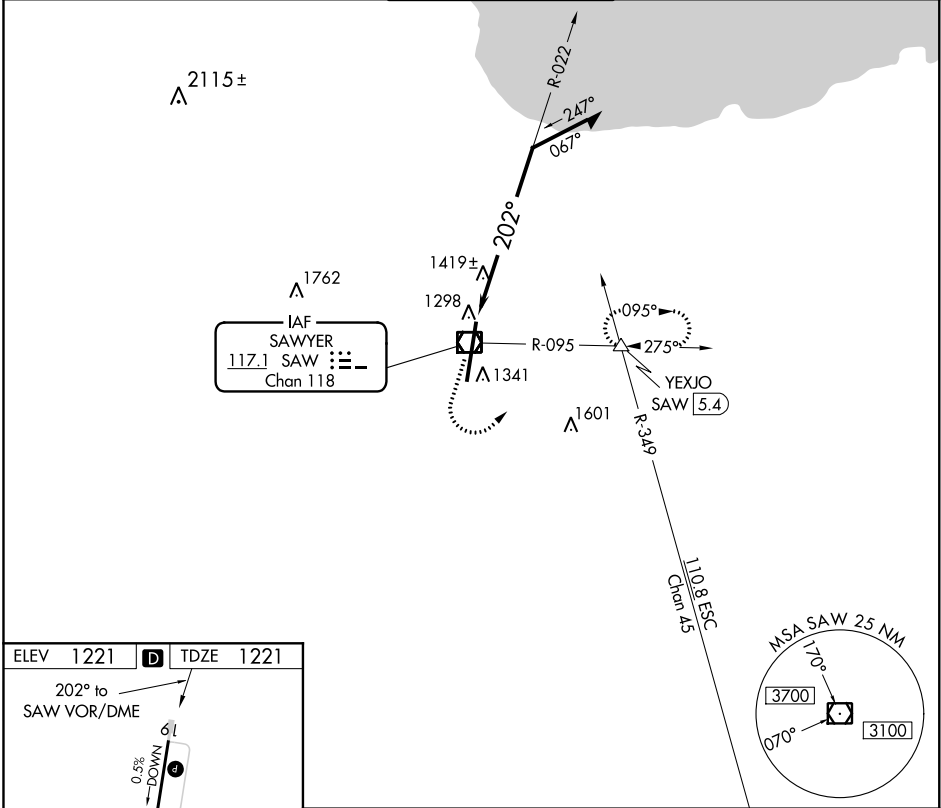
VOR/DME SAW 117.1 Chan 118	APP CRS 202°	Rwy Idg 12366 TDZE 1221 Apt Elev 1221
--	------------------------	--

VOR RWY 19

SAWYER INTL (SAW)

▽ MISSED APPROACH: Climb to 1800, then climbing left turn to 3000 via heading 050° and SAW R-095 to YEXJO Int and hold.

AWOS-3 118.375	MINNEAPOLIS CENTER 119.1 290.2	SAWYER TOWER ★ 119.975 (CTAF) 1	GND CON 121.65	UNICOM 122.7
--------------------------	--	---	--------------------------	------------------------



CATEGORY	A	B	C	D
S-19	1720-1	499 (500-1)	1720-1¼ 499 (500-1¼)	1720-1½ 499 (500-1½)
CIRCLING	1720-1	499 (500-1)	1720-1½ 499 (500-1½)	1780-2 559 (600-2)

EC-1, 14 SEP 2017 to 12 OCT 2017

EC-1, 14 SEP 2017 to 12 OCT 2017