


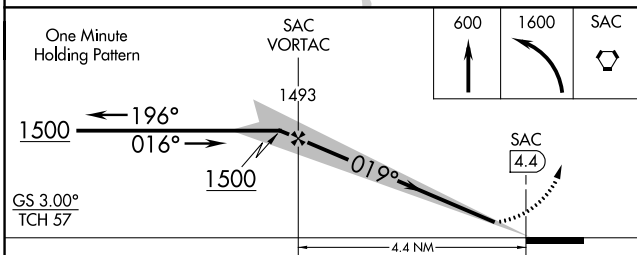
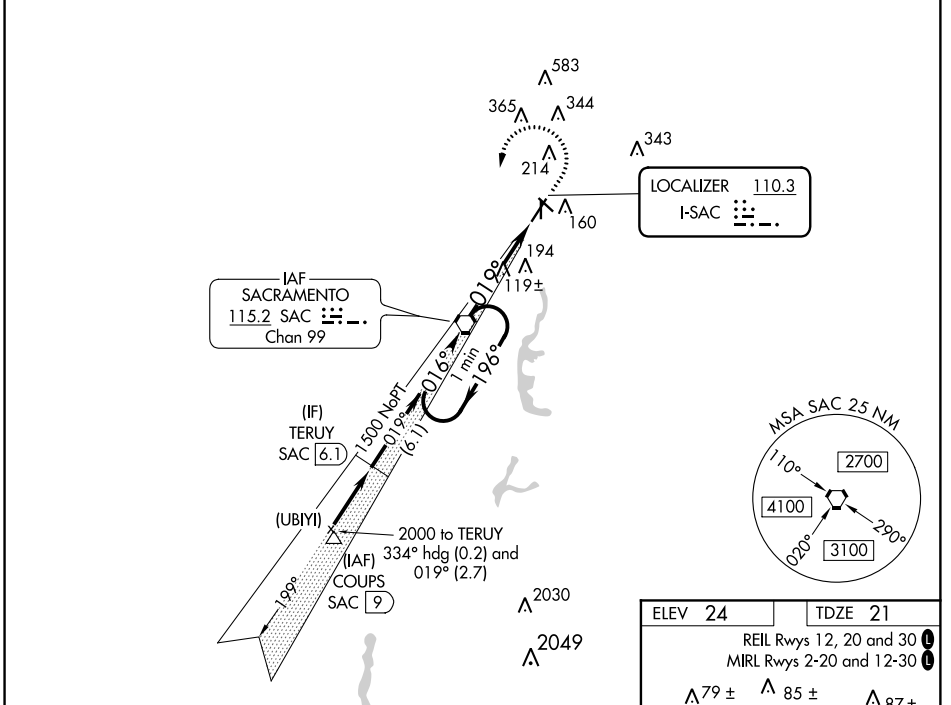
LOC I-SAC <b>110.3</b>	APP CRS <b>019°</b>	Rwy Idg <b>5503</b>
		TDZE <b>21</b>
		Apt Elev <b>24</b>

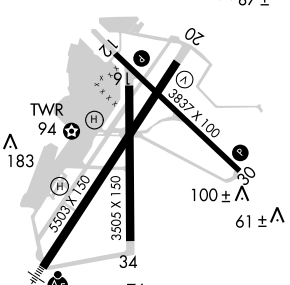
**ILS or LOC RWY 2**  
SACRAMENTO EXECUTIVE (SAC)

**▼** Night landing: Rwy 34 NA. For inop MALSR, increase S-ILS 2 all Cats visibility to 7/8.  
**▲** For inop MALSR when using Sacramento Intl altimeter setting, increase S-ILS 2 all Cats visibility to 1. When local altimeter setting not received, use Sacramento Intl altimeter setting and increase DA to 322, increase all MDA 40 feet.

**MALSR**  
  
**MISSED APPROACH:**  
 Climb to 600 then climbing left turn to 1600 direct SAC VORTAC and hold.

ATIS <b>125.5</b>	NORCAL APP CON <b>127.4 317.5</b>	<b>EXEC TOWER ★</b> <b>119.5 (CTAF) 0 278.8</b>	GND CON <b>125.0</b>	UNICOM <b>122.95</b>
----------------------	--------------------------------------	--	-------------------------	-------------------------



ELEV 24	TDZE 21
REIL Rwys 12, 20 and 30 MIRL Rwys 2-20 and 12-30	
▲ 79 ±	▲ 85 ±
	
FAF to MAP 4.4 NM	
Knots	60 90 120 150 180
Min:Sec	4:24 2:56 2:12 1:46 1:28

CATEGORY	A	B	C	D
S-ILS 2	294-1/2 273 (300-1/2)			
S-LOC 2	380-1/2	359 (400-1/2)	380-5/8	359 (400-5/8)
CIRCLING	500-1 476 (500-1)	520-1 496 (500-1)	520-1 1/2 496 (500-1 1/2)	580-2 556 (600-2)

SW-2, 17 AUG 2017 to 14 SEP 2017

SW-2, 17 AUG 2017 to 14 SEP 2017


WAAS CH <b>62810</b> <b>W02A</b>	APP CRS <b>019°</b>	Rwy Idg TDZE Apt Elev	<b>5503</b> <b>21</b> <b>24</b>
--	------------------------	-----------------------------	---------------------------------------

# RNAV (GPS) RWY 2

SACRAMENTO EXECUTIVE (SAC)

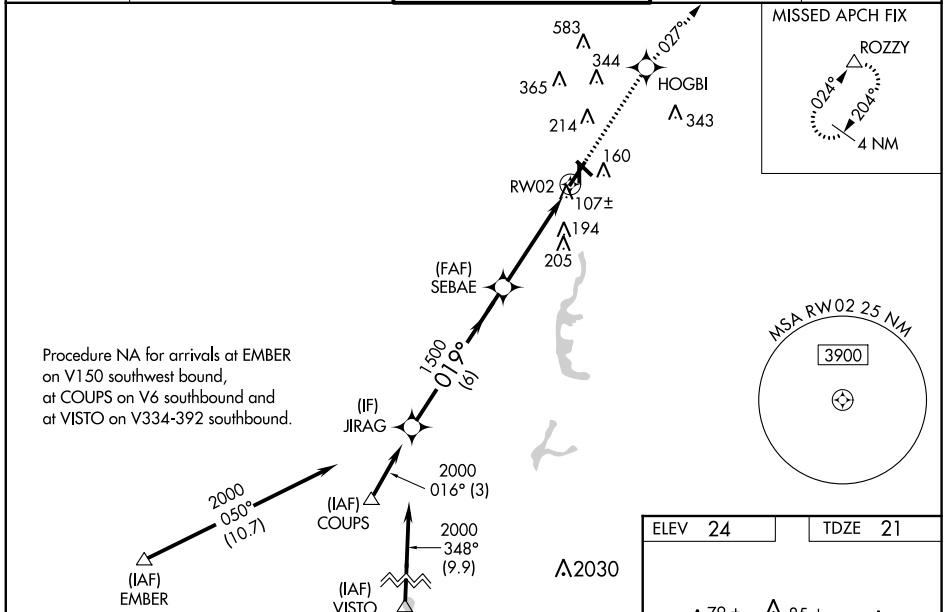
**▼** Baro-VNAV NA when using Sacramento Intl altimeter setting. For uncompensated Baro-VNAV systems, LNAV/VNAV NA below -15°C (5°F) or above 54°C (130°F).  
**▲** DME/DME RNP-0.3 NA.  
 When local altimeter setting not received, use Sacramento Intl altimeter setting and increase LPV DA to 322; increase LNAV/VNAV DA to 401 and all visibilities 1/8 mile; increase all MDA 40 feet and LNAV Cats C/D visibility 1/8 mile.  
 Night Landing: Rwy 34 NA.  
 For inoperative MALSR, increase LPV all Cats visibility to 3/8. For inoperative MALSR when using Sacramento Intl altimeter setting, increase LPV all Cats visibility to 1.

MALSR

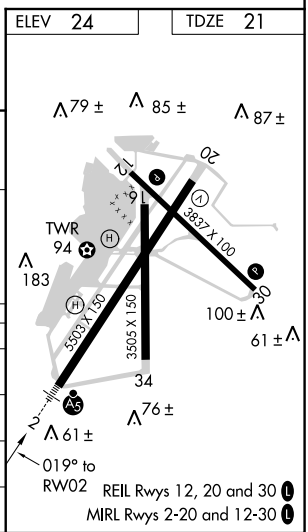


MISSED APPROACH:  
Climb to 3000 direct HOGBI and on track 027° to ROZZY and hold.

ATIS <b>125.5</b>	NORCAL APP CON <b>127.4 317.5</b>	EXEC TOWER* <b>119.5 (CTAF) 0 278.8</b>	GND CON <b>125.0</b>	UNICOM <b>122.95</b>
----------------------	--------------------------------------	--	-------------------------	-------------------------



JIRAG	SEBAE	HOGBI	ROZZY
2000	1500	3000	027° tr
GP 3.00° TCH 57	1500		
6 NM	4.4 NM		
CATEGORY	A	B	C
LPV DA		294-1/2	273 (300-1/2)
LNAV/VNAV DA		373-5/8	352 (400-5/8)
LNAV MDA	440-1/2	419 (500-1/2)	440-3/4 419 (500-3/4)
CIRCLING	500-1 476 (500-1)	520-1 496 (500-1)	520-1 1/2 496 (500-1 1/2) 580-2 556 (600-2)



SW-2, 17 AUG 2017 to 14 SEP 2017

SW-2, 17 AUG 2017 to 14 SEP 2017

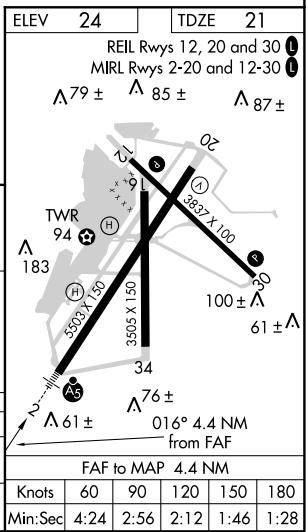
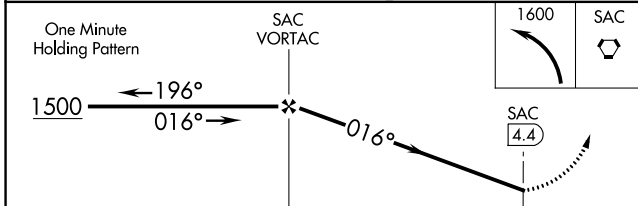
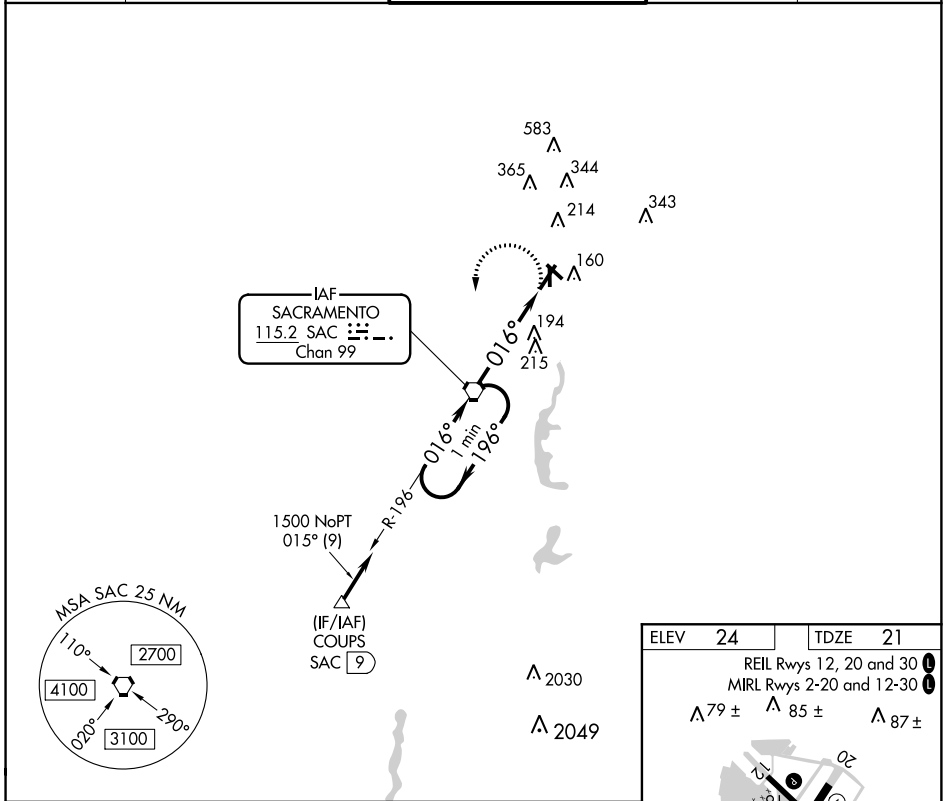
VORTAC SAC <b>115.2</b> Chan <b>99</b>	APP CRS <b>016°</b>	Rwy Idg <b>5503</b> TDZE <b>21</b> Apt Elev <b>24</b>
--	------------------------	---

# VOR RWY 2

## SACRAMENTO EXECUTIVE (SAC)

	Night landing: Rwy 34 NA. When local altimeter setting not received, use Sacramento Intl altimeter setting and increase all MDA 40 feet.		MISSED APPROACH: Climbing left turn to 1600 direct SAC VORTAC and hold.				
	<table border="1"> <tr> <td>ATIS <b>125.5</b></td> <td>NORCAL APP CON <b>127.4 317.5</b></td> <td>EXEC TOWER * <b>119.5 (CTAF) 0 278.8</b></td> <td>GND CON <b>125.0</b></td> <td>UNICOM <b>122.95</b></td> </tr> </table>	ATIS <b>125.5</b>	NORCAL APP CON <b>127.4 317.5</b>	EXEC TOWER * <b>119.5 (CTAF) 0 278.8</b>	GND CON <b>125.0</b>	UNICOM <b>122.95</b>	
ATIS <b>125.5</b>	NORCAL APP CON <b>127.4 317.5</b>	EXEC TOWER * <b>119.5 (CTAF) 0 278.8</b>	GND CON <b>125.0</b>	UNICOM <b>122.95</b>			

ATIS <b>125.5</b>	NORCAL APP CON <b>127.4 317.5</b>	EXEC TOWER * <b>119.5 (CTAF) 0 278.8</b>	GND CON <b>125.0</b>	UNICOM <b>122.95</b>
----------------------	--------------------------------------	---	-------------------------	-------------------------



CATEGORY	A	B	C	D
S-2	520-1/2	499 (500-1/2)	520-1	499 (500-1)
CIRCLING	520-1	496 (500-1)	520-1/2	580-2
			496 (500-1/2)	556 (600-2)

SW-2, 17 AUG 2017 to 14 SEP 2017

SW-2, 17 AUG 2017 to 14 SEP 2017