

WAAS CH 82425 W14A	APP CRS 141°	Rwy Idg 5507 TDZE 998 Apt Elev 998
--	------------------------	---

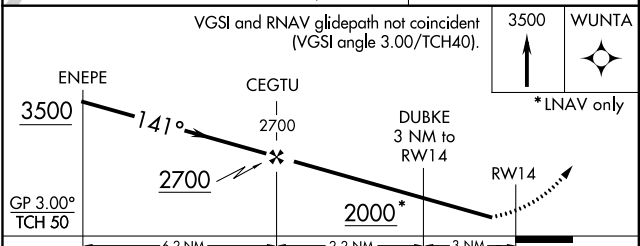
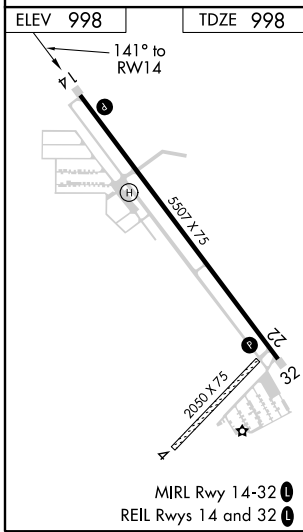
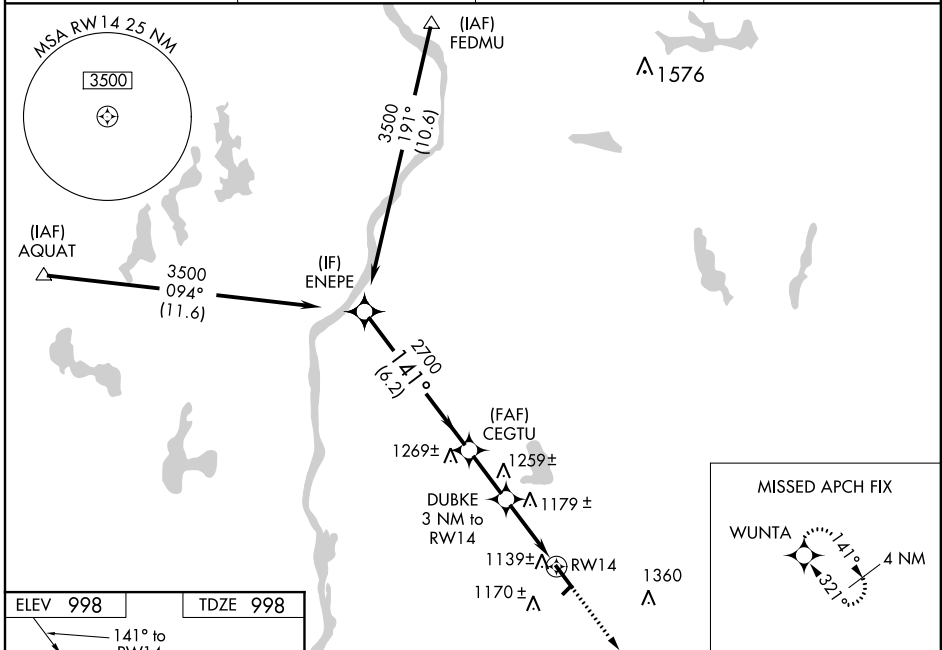
RNAV (GPS) RWY 14

NEW RICHMOND RGNL (R.NH)

⚠ Baro-VNAV NA when using Osceola altimeter setting. For uncompensated Baro-VNAV systems, LNAV/VNAV NA below -16°C (4°F) or above 37°C (98°F). DME/DME RNP-0.3 NA. Helicopter visibility reduction below 3/4 SM NA. When local altimeter setting not received, use Osceola altimeter setting and increase all DA/MDA 40 feet; increase LNAV/VNAV all Cats visibility 1/4 mile. Circling to Rwy 4, 22 NA.

⚠ MISSED APPROACH: Climb to 3500 direct WUNTA and hold.

AWOS-3 120.0	MINNEAPOLIS APP CON 121.2 335.65	GCO 121.725	UNICOM 122.975 (CTAF) 0
------------------------	--	-----------------------	-----------------------------------



CATEGORY	A	B	C	D
LPV DA		1272-1	274 (300-1)	
LNAV/VNAV DA		1320-1	322 (400-1)	
LNAV MDA	1440-1	442 (500-1)	1440-1 ³ / ₈	442 (500-1 ³ / ₈)
CIRCLING	1520-1	522 (600-1)	1520-1 ¹ / ₂ 522 (600-1 ¹ / ₂)	1560-2 562 (600-2)

EC-3, 22 JUN 2017 to 20 JUL 2017

EC-3, 22 JUN 2017 to 20 JUL 2017

WAAS CH 86525 W32A	APP CRS 321°	Rwy Idg TDZE Apt Elev	5507 996 998
--	------------------------	-----------------------------	---

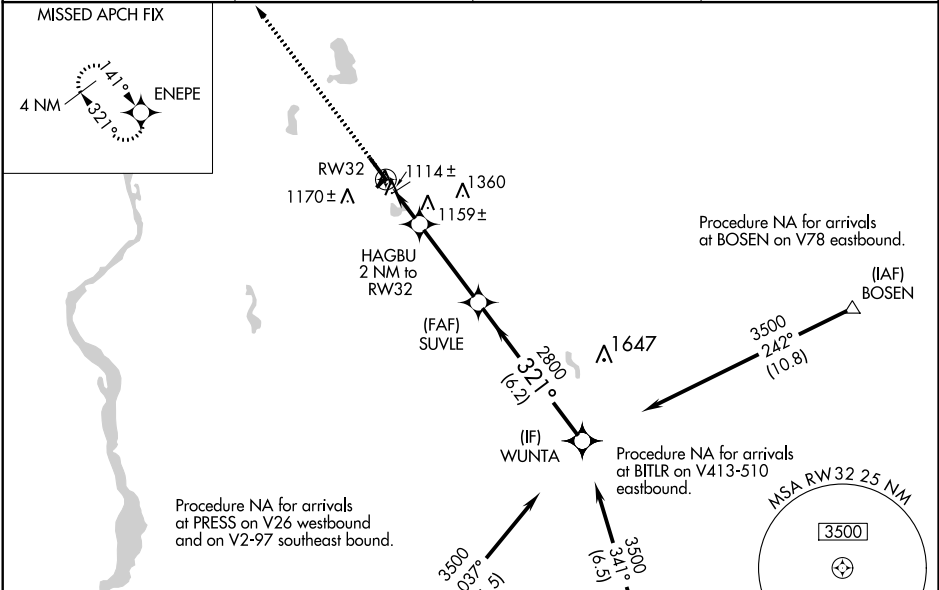
RNAV (GPS) RWY 32

NEW RICHMOND RGNL (RNH)

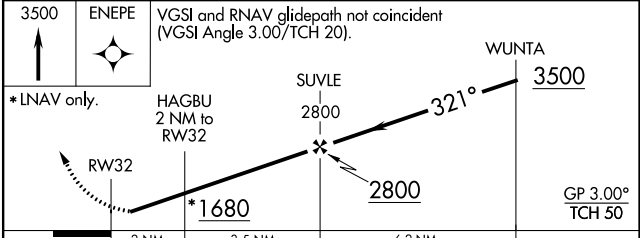
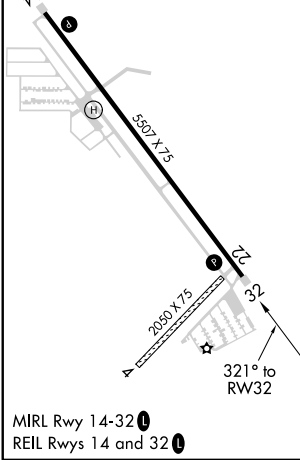
⚠ Baro-VNAV NA when using Osceola altimeter setting. For uncompensated Baro-VNAV systems, LNAV/VNAV NA below -16°C (4°F) or above 37°C (98°F). DME/DME RNP-0.3 NA. Helicopter visibility reduction below 3/4 SM NA. When local altimeter setting not received, use Osceola altimeter setting and increase all DA/MDA 40 feet; increase LNAV/VNAV all Cats and LNAV Cat C and D visibility 1/8 mile. Circling to Rwy 4, 22 NA.

MISSED APPROACH:
Climb to 3500 direct ENEPE and hold.

AWOS-3 120.0	MINNEAPOLIS APP CON 121.2 335.65	GCO 121.725	UNICOM 122.975 (CTAF) ①
------------------------	--	-----------------------	-----------------------------------



ELEV 998	TDZE 996
----------	----------



CATEGORY	A	B	C	D
LPV DA		1246-1	250 (300-1)	
LNAV/VNAV DA		1295-1	299 (300-1)	
LNAV MDA	1420-1	424 (500-1)	1420-1 1/4	424 (500-1 1/4)
CIRCLING	1520-1	522 (600-1)	1520-1 1/2	1560-2
			522 (600-1 1/2)	562 (600-2)

EC-3, 22 JUN 2017 to 20 JUL 2017

EC-3, 22 JUN 2017 to 20 JUL 2017