

TIKEE ONE ARRIVAL (RNAV)
(TIKEE.TIKEE1) 14317

POTOMAC APP CON
120.45 306.925
JOINT BASE ANDREWS ATIS
113.1 251.05
DAVISON AAF ATIS
128.175 230.0
RONALD REAGAN WASHINGTON
NATIONAL ATIS 132.65



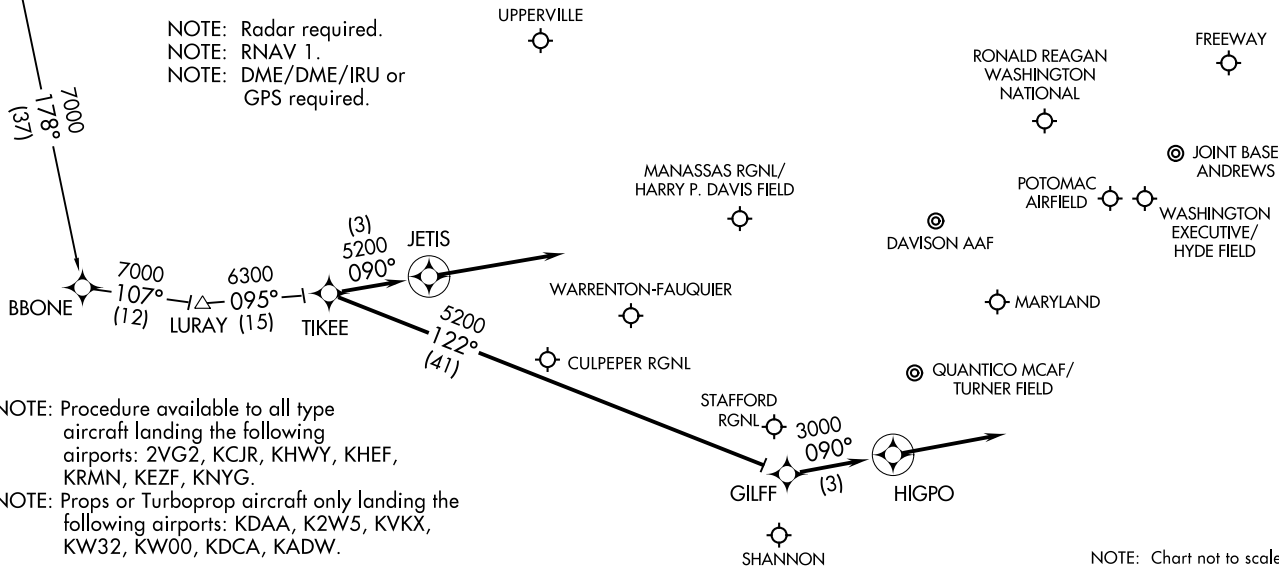
ARRIVAL ROUTE DESCRIPTION

BBONE TRANSITION (BBONE.TIKEE1):
KESSEL TRANSITION (ESL.TIKEE1):

All aircraft types landing 2VG2, KCJR, KHWH, KHEF, KRMN, KEZF, KNYG:
From TIKEE on track 090° to JETIS, then on 090° heading. Expect radar vectors to final approach course.

Turboprops landing KDA A, K2W5, KVX, KW32, KW00, KDCA, KADW:
From TIKEE on track 122° to GILFF, then on track 090° to HIGPO, then on 090° heading. Expect radar vectors to final approach course.

KESSEL
ESL
FL190



NOTE: Radar required.
NOTE: RNAV 1.
NOTE: DME/DME/IRU or GPS required.

NOTE: Procedure available to all type aircraft landing the following airports: 2VG2, KCJR, KHWH, KHEF, KRMN, KEZF, KNYG.
NOTE: Props or Turboprop aircraft only landing the following airports: KDA A, K2W5, KVX, KW32, KW00, KDCA, KADW.

NOTE: Chart not to scale

TIKEE ONE ARRIVAL (RNAV)
(TIKEE.TIKEE1) 14317

ST-443 (FAA)

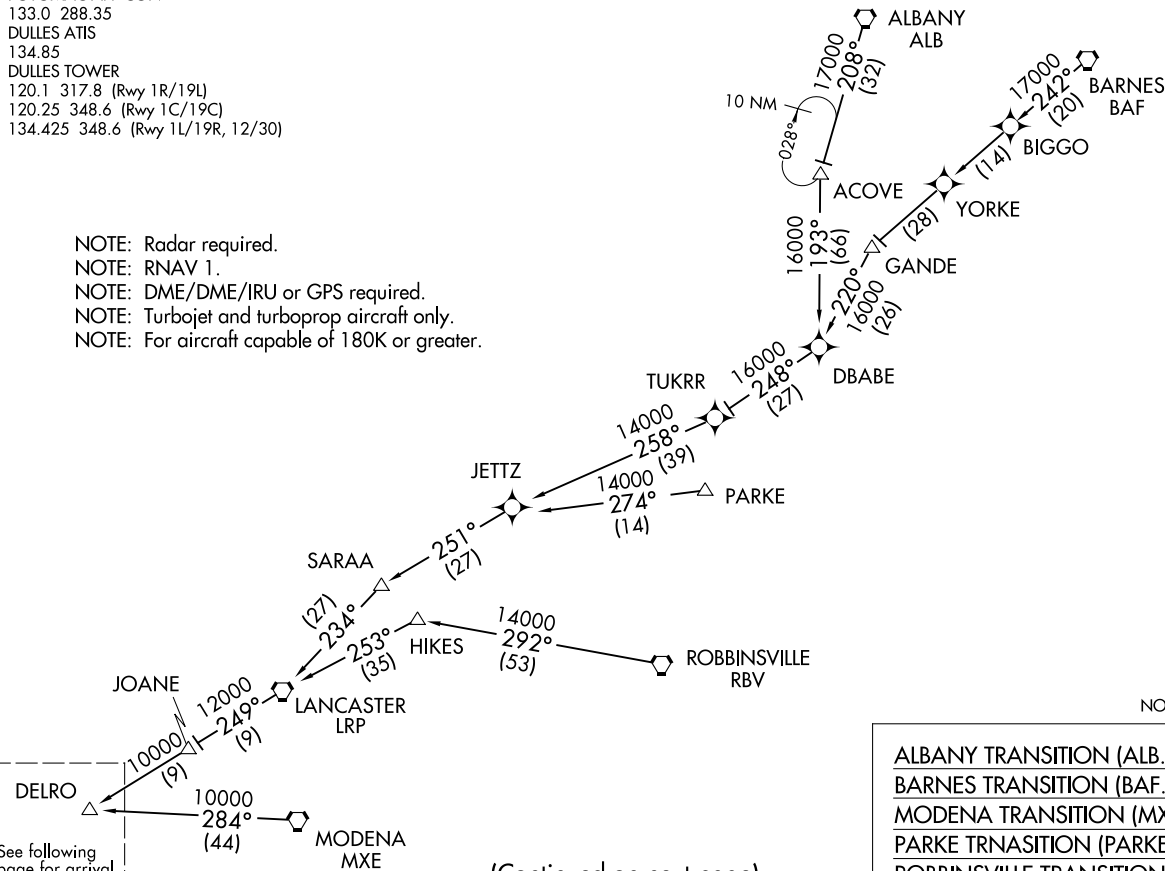
WASHINGTON, DC

WASHINGTON, DC

HYPER FIVE ARRIVAL (RNAV) Transition Routes
(HYPER.HYPER5) 14261

POTOMAC APP CON
133.0 288.35
DULLES ATIS
134.85
DULLES TOWER
120.1 317.8 (Rwy 1R/19L)
120.25 348.6 (Rwy 1C/19C)
134.425 348.6 (Rwy 1L/19R, 12/30)

- NOTE: Radar required.
- NOTE: RNAV 1.
- NOTE: DME/DME/IRU or GPS required.
- NOTE: Turbojet and turboprop aircraft only.
- NOTE: For aircraft capable of 180K or greater.



NOTE: Chart not to scale.

- ALBANY TRANSITION (ALB.HYPER5):
- BARNES TRANSITION (BAF.HYPER5):
- MODENA TRANSITION (MXE.HYPER5):
- PARKE TRNASITION (PARKE.HYPER5):
- ROBBINSVILLE TRANSITION (RBV.HYPER5):

(Continued on next page)

WASHINGTON, DC

See following page for arrival routes.

(HYPER.HYPER5) 14261

HYPER FIVE ARRIVAL (RNAV) Transition Routes
ST-5100 (FAA)

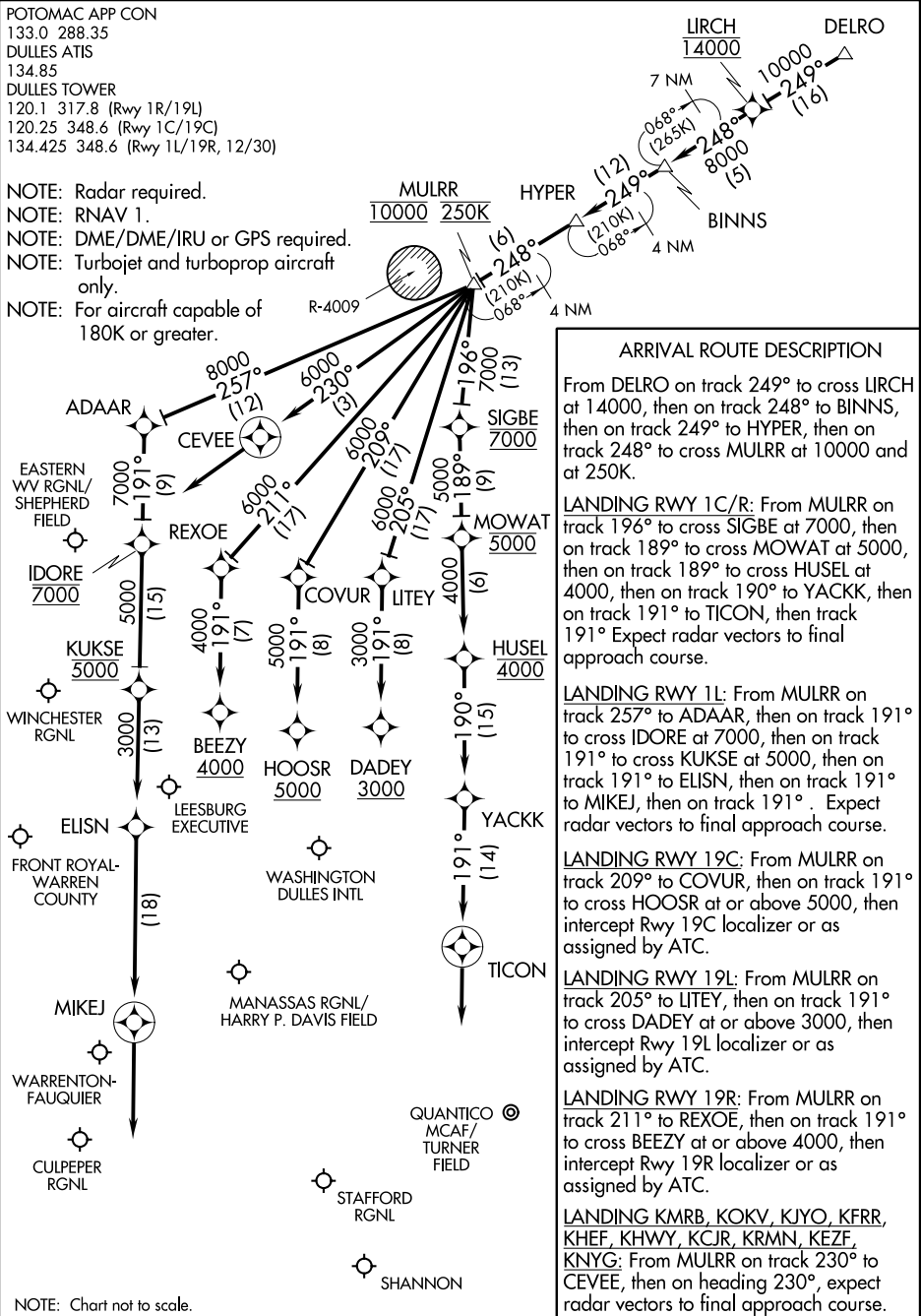
WASHINGTON, DC

HYPER FIVE ARRIVAL (RNAV) Arrival Routes

WASHINGTON, DC

POTOMAC APP CON
 133.0 288.35
 DULLES ATIS
 134.85
 DULLES TOWER
 120.1 317.8 (Rwy 1R/19L)
 120.25 348.6 (Rwy 1C/19C)
 134.425 348.6 (Rwy 1L/19R, 12/30)

- NOTE: Radar required.
- NOTE: RNAV 1.
- NOTE: DME/DME/IRU or GPS required.
- NOTE: Turbojet and turboprop aircraft only.
- NOTE: For aircraft capable of 180K or greater.



ARRIVAL ROUTE DESCRIPTION

From DELRO on track 249° to cross LIRCH at 14000, then on track 248° to BINNS, then on track 249° to HYPER, then on track 248° to cross MULRR at 10000 and at 250K.

LANDING RWY 1C/R: From MULRR on track 196° to cross SIGBE at 7000, then on track 189° to cross MOWAT at 5000, then on track 189° to cross HUSEL at 4000, then on track 190° to YACKK, then on track 191° to TICON, then track 191°. Expect radar vectors to final approach course.

LANDING RWY 1L: From MULRR on track 257° to ADAAR, then on track 191° to cross IDORE at 7000, then on track 191° to cross KUKSE at 5000, then on track 191° to cross BEEZY at 4000, then on track 191° to HOOSR, then on track 191° to MIKEJ, then on track 191°. Expect radar vectors to final approach course.

LANDING RWY 19C: From MULRR on track 209° to COVUR, then on track 191° to cross HOOSR at or above 5000, then intercept Rwy 19C localizer or as assigned by ATC.

LANDING RWY 19L: From MULRR on track 205° to LITEY, then on track 191° to cross DADEY at or above 3000, then intercept Rwy 19L localizer or as assigned by ATC.

LANDING RWY 19R: From MULRR on track 211° to REXOE, then on track 191° to cross BEEZY at or above 4000, then intercept Rwy 19R localizer or as assigned by ATC.

LANDING KMRB, KOKV, KJYO, KFRR, KHEF, KHWW, KCJR, KRMN, KEZF, KNYG: From MULRR on track 230° to CEVEE, then on heading 230°, expect radar vectors to final approach course.

NE-3, 08 JAN 2015 to 05 FEB 2015

NE-3, 08 JAN 2015 to 05 FEB 2015

NOTE: Chart not to scale.

HYPER FIVE ARRIVAL (RNAV) Arrival Routes

WASHINGTON, DC