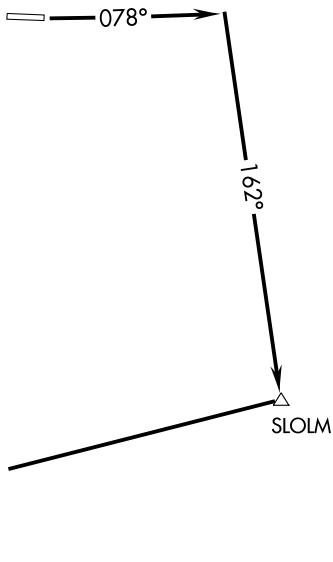


DENVER CENTER
134.5 327.8

**TOP ALTITUDE:
14000**

NOTE: RNAV 1
NOTE: GPS Required.



TAKEOFF MINIMUMS

Rwy 26: NA- ATC.

Rwy 8: Standard with minimum climb of 396' per NM to 11100.

TAKEOFF OBSTACLE NOTES

Rwy 8: Terrain beginning 155' from DER, 380' right of centerline, up to 5551' MSL.

Pole 4049' from DER, 1379' right of centerline, 42' AGL/5642' MSL.

Obstruction light on NDB Tower 41' from DER, 300' left of centerline, 46' AGL/5586' MSL.

NOTE: Chart not to scale.

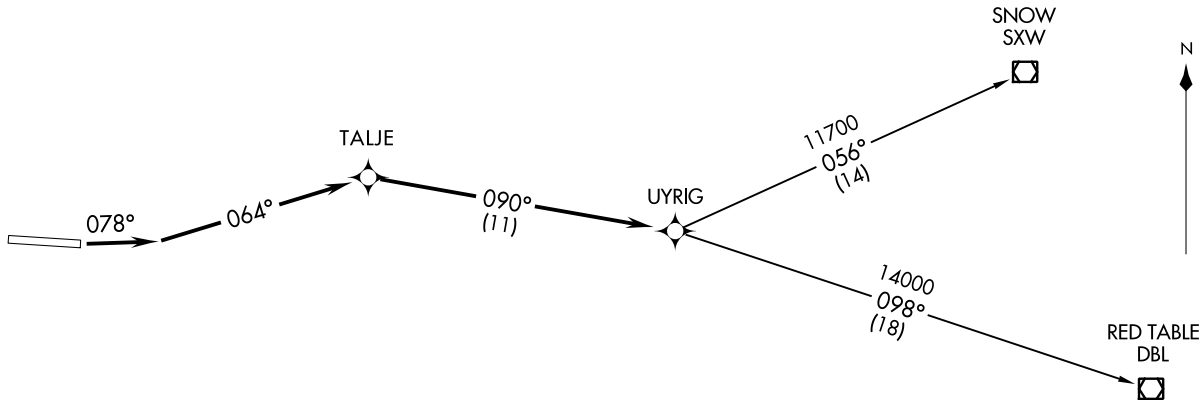


DEPARTURE ROUTE DESCRIPTION

TAKEOFF RUNWAY 8: Climb heading 078° to intercept course 162° to SLOLM, then on track 246° to EDUKY, thence. . . .

. . . .via assigned route, maintain 14000, expect clearance to assigned altitude 10 minutes after departure.

**TOP ALTITUDE:
14000**



UYRIG FOUR DEPARTURE (RNAV)
(UYRIG4, UYRIG) 21 JUL 16

(UYRIG4, UYRIG) 16203
UYRIG FOUR DEPARTURE (RNAV) SL-6741 (FAA)

GARFIELD COUNTY RGNL (RIL)
RILE, COLORADO

GARFIELD COUNTY RGNL (RIL)
RILE, COLORADO

DENVER CENTER
134.5 327.8

DEPARTURE ROUTE DESCRIPTION

TAKEOFF RUNWAY 8: Climb heading 078° to intercept course 064° to TALJE, then on track 090° to UYRIG, thence. . . .

. . . .via transition or assigned route. Maintain 14000, expect clearance to assigned altitude 10 minutes after departure.

RED TABLE TRANSITION (UYRIG4.DBL)

SNOW TRANSITION (UYRIG4.SXW)

NOTE: RNAV 1.
NOTE: GPS Required.

TAKEOFF MINIMUMS

Rwy 26: NA - ATC.
Rwy 8: Standard with minimum climb of 335' per NM to 10000.

TAKEOFF OBSTACLE NOTES

Rwy 8: Terrain beginning 155' from DER, 380' right of centerline, up to 5551' MSL. Pole 4049' from DER, 1379' right of centerline, 42' AGL/5642' MSL. Obstruction light on NDB Tower 41' from DER, 300' left of centerline, 46' AGL/5586' MSL.

NOTE: Chart not to scale.