

NDB RCX	APP CRS	Rwy Idg	4001
356	330°	TDZE	1233
		Apt Elev	1240

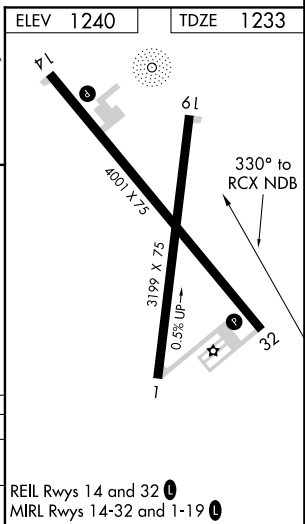
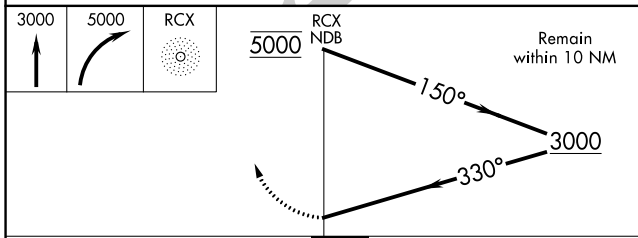
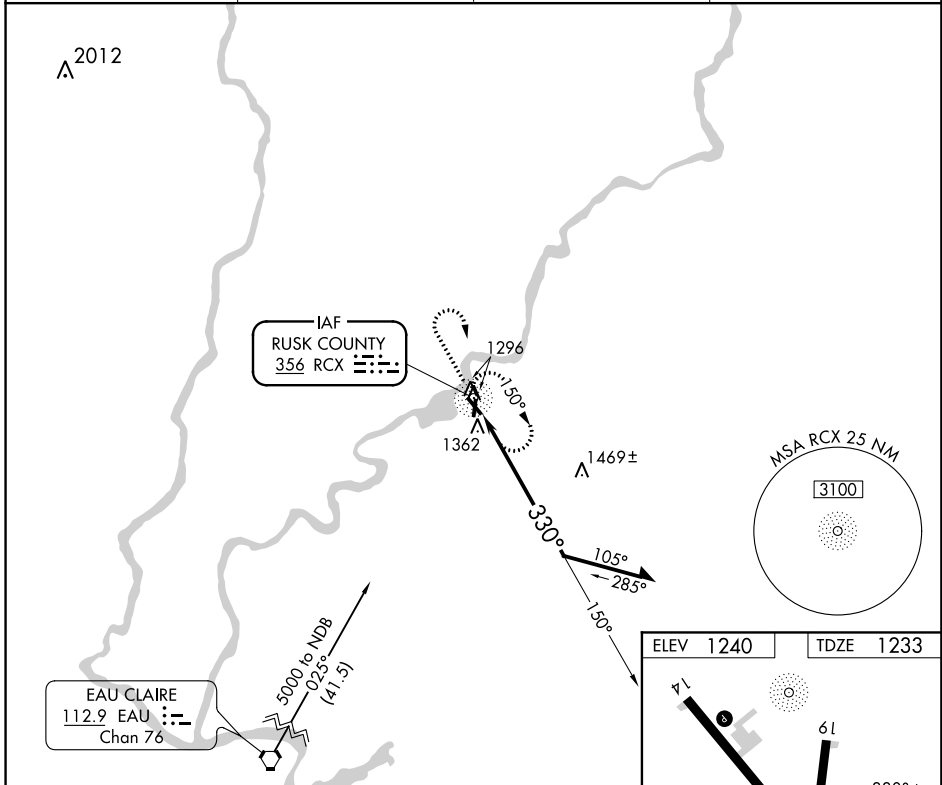
NDB RWY 32

RUSK COUNTY (RCX)

⚠ Circling to Rwy 1/19 NA at night. When local altimeter setting not received, use Rice Lake altimeter setting and increase all MDA 100 feet. When VGS1 inop, Straight-in/Circling Rwy 32 procedure NA at night. Visibility reduction by helicopters NA.

⚠ MISSED APPROACH: Climb to 3000 then climbing right turn to 5000 direct RCX NDB and hold, continue climb-in-hold to 5000.

AWOS-3 118.125	GREEN BAY RADIO 122.3	GCO 121.725	UNICOM 122.8 (CTAF)
--------------------------	---------------------------------	-----------------------	-------------------------------



CATEGORY	A	B	C	D
S-32	1820-1	587 (600-1)		NA
CIRCLING	1820-1	580 (600-1)		NA

REIL Rwys 14 and 32
MIRL Rwys 14-32 and 1-19

EC-3, 09 NOV 2017 to 07 DEC 2017

EC-3, 09 NOV 2017 to 07 DEC 2017

WAAS CH 77921 W14A	APP CRS 140°	Rwy Idg TDZE Apt Elev	4001 1237 1240
--	------------------------	-----------------------------	---

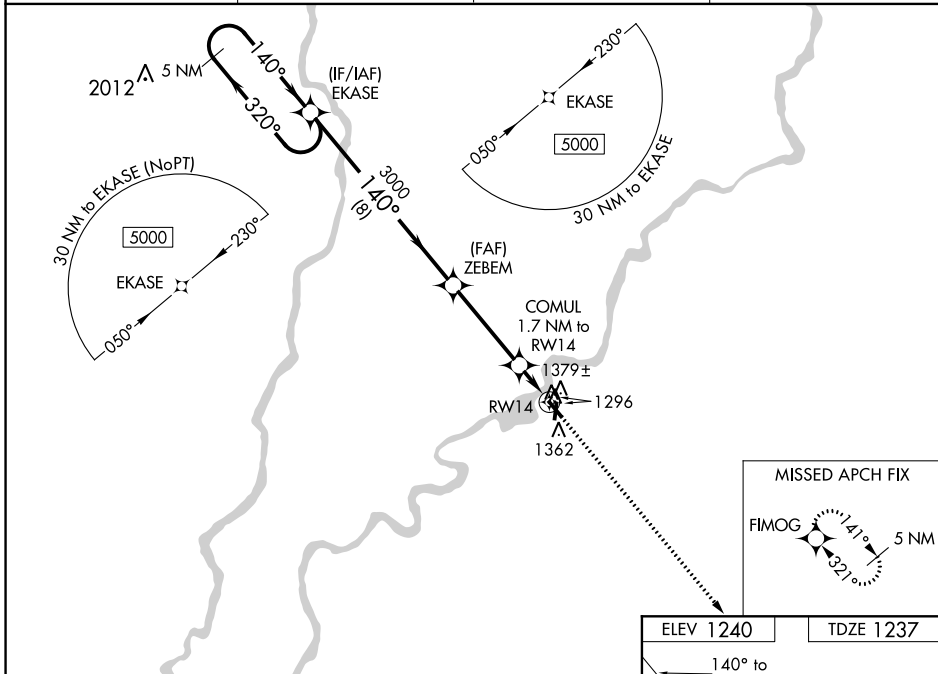
RNAV (GPS) RWY 14

RUSK COUNTY (RCX)

⚠ Circling to Rwy 1/19 NA at night. For uncompensated Baro-VNAV systems, LNAV/VNAV NA below -17°C (2°F) or above 54°C (130°F). When local altimeter setting not received, use Rice Lake altimeter setting and increase all DA/MDA 100 feet, increase LPV all Cats visibility to 1½, LNAV/VNAV all Cats visibility to 1½. DME/DME RNP-0.3 NA. VDP and Baro-VNAV NA when using Rice Lake altimeter setting.

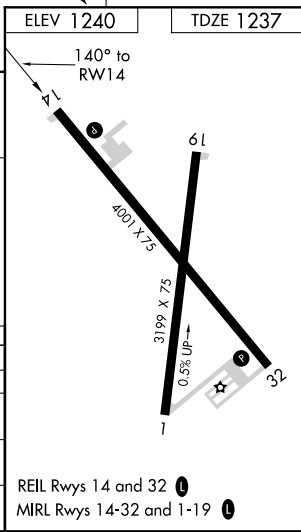
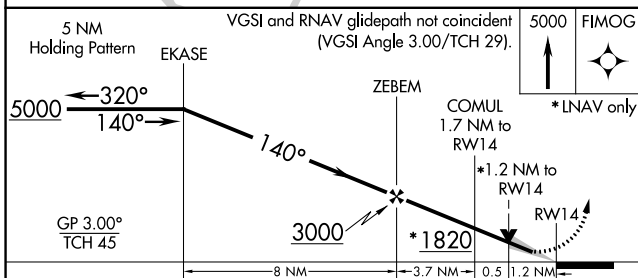
MISSED APPROACH: Climb to 5000 direct FIMOG and hold, continue climb-in-hold to 5000.

AWOS-3 118.125	GREEN BAY RADIO 122.3	GCO 121.725	UNICOM 122.8 (CTAF) 0
--------------------------	---------------------------------	-----------------------	--



EC-3, 09 NOV 2017 to 07 DEC 2017

EC-3, 09 NOV 2017 to 07 DEC 2017



CATEGORY	A	B	C	D
LPV DA	1487-¾	250 (300-¾)		NA
LNAV/VNAV DA	1572-1½	335 (400-1½)		NA
LNAV MDA	1640-1	403 (400-1)		NA
CIRCLING	1680-1 440 (500-1)	1700-1 460 (500-1)		NA

REIL Rwy 14 and 32 **0**
MIRL Rwy 14-32 and 1-19 **0**

WAAS CH 70721 W32A	APP CRS 321°	Rwy Idg TDZE Apr Elev	4001 1233 1240
--	------------------------	-----------------------------	---

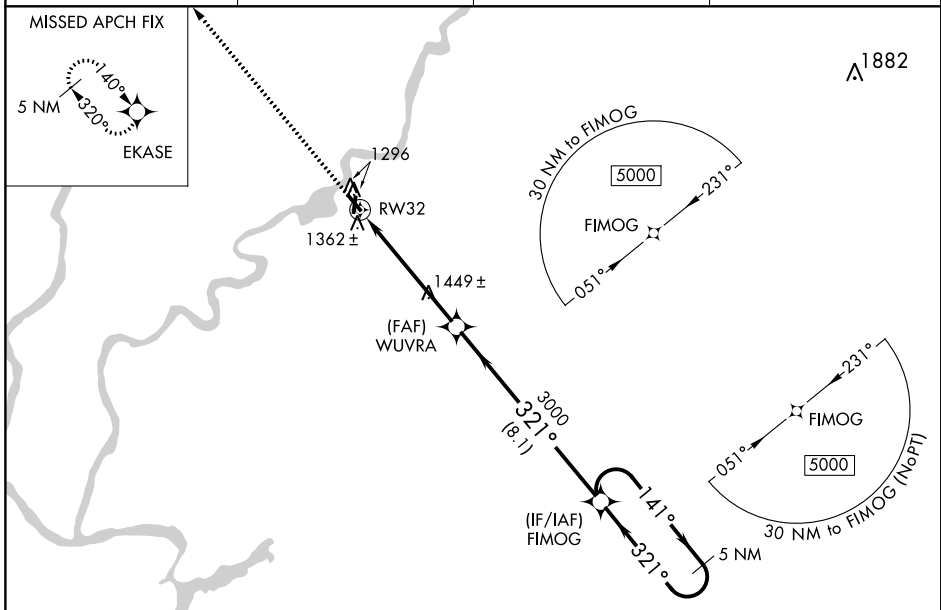
RNAV (GPS) RWY 32

RUSK COUNTY (RCX)

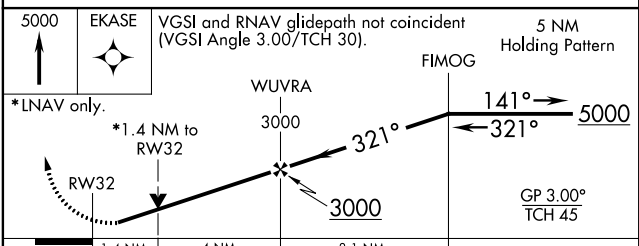
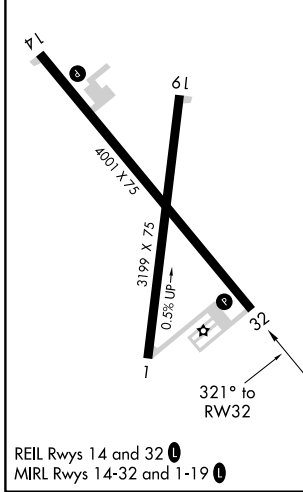
⚠ Circling to Rwy 1/19 NA at night. For uncompensated Baro-VNAV systems, LNAV/VNAV NA below -17°C (2°F) or above 54°C (130°F). When local altimeter setting not received, use Rice Lake altimeter setting and increase all DA/MDA 100 feet, increase LPV all Cats visibility to 1 $\frac{1}{8}$. DME/DME RNP-0.3 NA. VDP and Baro-VNAV NA when using Rice Lake altimeter setting. Helicopter visibility below $\frac{3}{4}$ SM NA.

⚠ MISSED APPROACH: Climb to 5000 direct EKASE and hold, continue climb-in-hold to 5000.

AWOS-3 118.125	GREEN BAY RADIO 122.3	GCO 121.725	UNICOM 122.8 (CTAF) ⓪
--------------------------	---------------------------------	-----------------------	--



ELEV 1240	TDZE 1233
-----------	-----------



CATEGORY	A	B	C	D
LPV DA	1483- $\frac{3}{4}$	250 (300- $\frac{3}{4}$)		NA
LNAV/VNAV DA	1510- $\frac{7}{8}$	277 (300- $\frac{7}{8}$)		NA
LNAV MDA	1700-1	467 (500-1)		NA
CIRCLING	1700-1	460 (500-1)		NA

EC-3, 09 NOV 2017 to 07 DEC 2017

EC-3, 09 NOV 2017 to 07 DEC 2017