

LOC I-PWK 111.9	APP CRS 161°	Rwy Idg 5001
		TDZE 643
		Apt Elev 647

ILS or LOC RWY 16

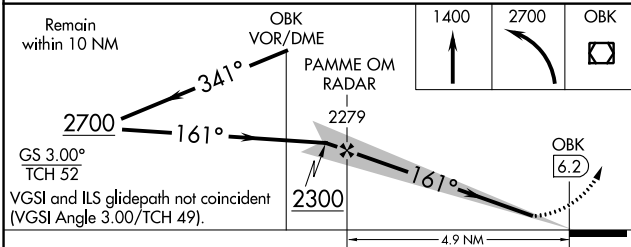
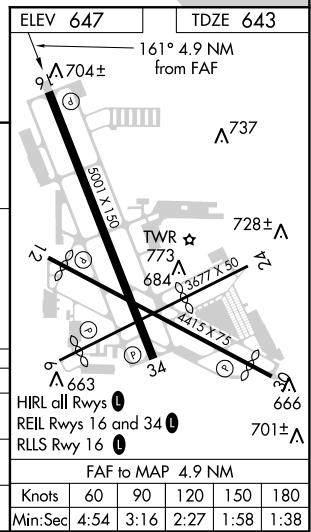
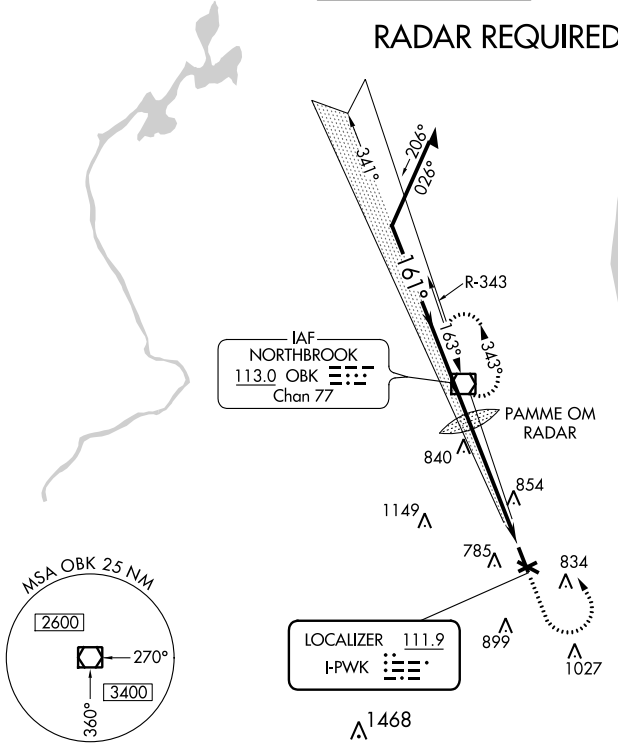
CHICAGO EXECUTIVE (PWK)

▽ If local altimeter setting not received, use Chicago-O'Hare Intl altimeter setting and increase all DAs 22 feet, and all visibilities ¼ mile; increase all MDAs 40 feet, and S-LOC Cat C and D visibilities ¼ mile. Helicopter visibility reduction below ¾ SM NA. Night landing: Rwy 6, 12, 24 NA. Autopilot coupled approach NA below 1125.

MISSED APPROACH: Climb to 1400 then climbing left turn to 2700 direct OBK VOR/DME and hold.

ATIS 124.2	CHICAGO APP CON 120.55 306.925	EXECUTIVE TOWER ★ 119.9 (CTAF) 0	GND CON 121.7	CLNC DEL 124.7 (when tower closed)	UNICOM 122.95
----------------------	--	--	-------------------------	---	-------------------------

RADAR REQUIRED



CATEGORY	A	B	C	D
S-ILS 16	927-1 284 (300-1)			
S-LOC 16	1140-1 497 (500-1)	1140-1½ 497 (500-1½)	1140-1½ 497 (500-1½)	
CIRCLING	1140-1 493 (500-1)	1160-1½ 513 (600-1½)	1200-2 553 (600-2)	

FAF to MAP 4.9 NM					
Knots	60	90	120	150	180
Min:Sec	4:54	3:16	2:27	1:58	1:38

EC-3, 27 APR 2017 to 25 MAY 2017

EC-3, 27 APR 2017 to 25 MAY 2017

WAAS CH 45627 W16A	APP CRS 161°	Rwy Idg TDZE Apt Elev	5001 643 647
--	------------------------	-----------------------------	---

RNAV (GPS) RWY 16

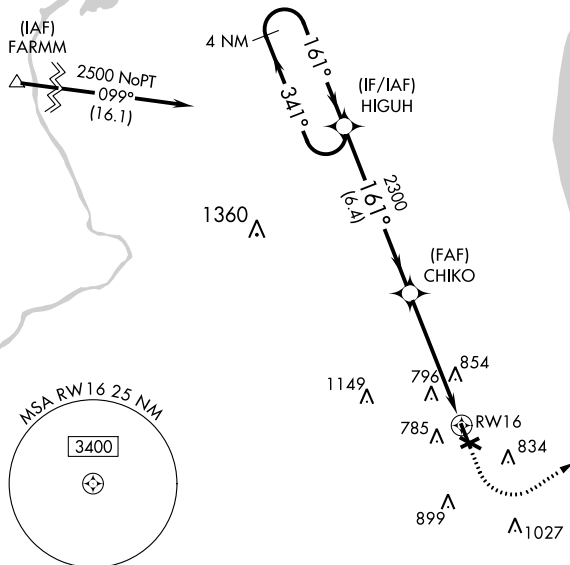
CHICAGO EXECUTIVE (PWK)

⚠ Circling to Rwy 6, 12, 24, 30, 34 NA at night. For uncompensated Baro-VNAV systems, LNAV/VNAV NA below -16°C (4°F) or above 39°C (102°F). Rwy 16 helicopter visibility reduction below 3/4 SM NA. DME/DME RNP-0.3 NA. When local altimeter setting not received, use Chicago O'Hare Intl altimeter setting and increase all DA 22 feet and all MDA 40 feet and increase LNAV Cats C and D visibility 1/4 mile, and Circling Cat C visibility 1/8 mile. VDP and Baro-VNAV NA with Chicago O'Hare Intl altimeter setting.

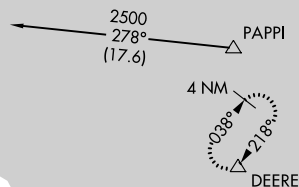
MISSED APPROACH:
Climb to 1200 then climbing left turn to 2100 direct DEERE and hold.

ATIS 124.2	CHICAGO APP CON 120.55 306.925	EXECUTIVE TOWER * 119.9 (CTAF) 0	GND CON 121.7	CLNC DEL 124.7 (when tower closed)	UNICOM 122.95
----------------------	--	--	-------------------------	---	-------------------------

Procedure NA for arrivals at FARMM on V24-100-228 northwest bound.

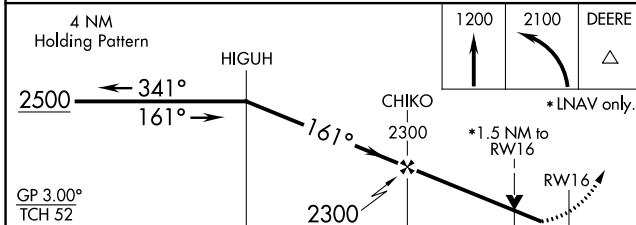


Procedure NA for arrivals at PAPP1 on V84 eastbound and on V7 southbound.

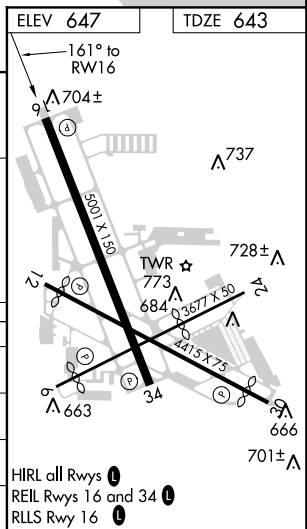


EC-3, 27 APR 2017 to 25 MAY 2017

EC-3, 27 APR 2017 to 25 MAY 2017



CATEGORY	A	B	C	D
LPV DA	905-1 262 (300-1)			
LNAV/VNAV DA	1088-1½ 445 (500-1½)			
LNAV MDA	1160-1 517 (600-1)	1160-1⅓ 517 (600-1⅓)		
CIRCLING	1160-1 513 (600-1)	1160-1½ 513 (600-1½)	1200-2 553 (600-2)	



HIRL all Rwys 0
REIL Rwys 16 and 34 0
RLS Rwy 16 0

VOR/DME OBK 113.0 Chan 77	APP CRS 164°	Rwy Idg TDZE 5001 643 Apt Elev 647
--	------------------------	---

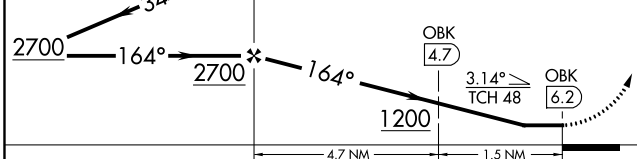
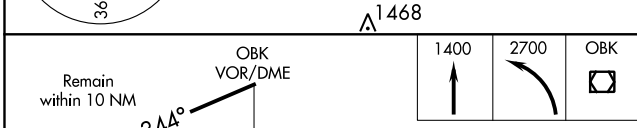
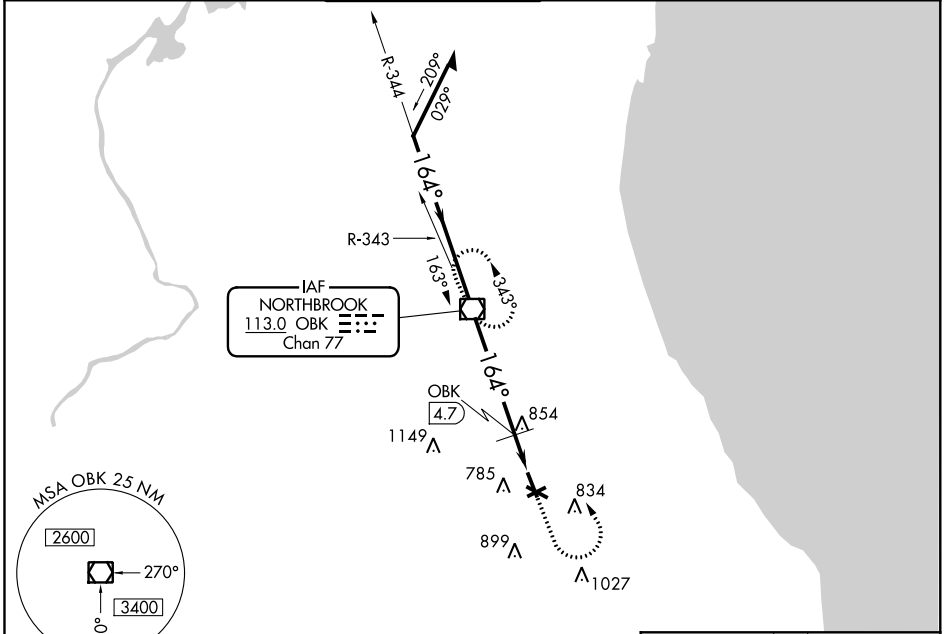
VOR RWY 16

CHICAGO EXECUTIVE (PWK)

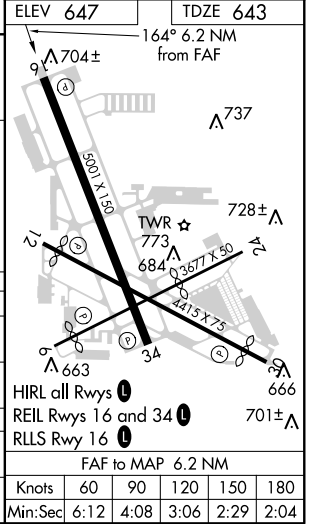
▼ Helicopter visibility reduction below 3/4 SM NA. When local altimeter setting not received, use Chicago-O'Hare Intl altimeter setting and increase all MDA 40 feet and increase DME minimums S-16 Cats C and D visibility 1/4 mile. Night landing: Rwy 6, 12, 24 NA.

MISSED APPROACH: Climb to 1400, then climbing left turn to 2700 direct OBK VOR/DME and hold.

ATIS 124.2	CHICAGO APP CON 120.55 306.925	EXECUTIVE TOWER ★ 119.9 (CTAF) 0	GND CON 121.7	CLNC DEL 124.7 (when tower closed)	UNICOM 122.95
----------------------	--	--	-------------------------	---	-------------------------



CATEGORY	A	B	C	D
S-16	1200-1	557 (600-1)	1200-1½ 557 (600-1½)	1200-1¾ 557 (600-1¾)
CIRCLING	1200-1	553 (600-1)	1200-1½ 553 (600-1½)	1200-2 553 (600-2)
DME MINIMUMS				
S-16	1120-1	477 (500-1)	1120-1¼ 477 (500-1¼)	1120-1½ 477 (500-1½)
CIRCLING	1140-1	493 (500-1)	1160-1½ 513 (600-1½)	1200-2 553 (600-2)



EC-3, 27 APR 2017 to 25 MAY 2017

EC-3, 27 APR 2017 to 25 MAY 2017