

LOC/DME I-EIF <b>108.3</b> Chan 20	APP CRS <b>259°</b>	Rwy Idg TDZE Apt Elev	<b>5791</b> <b>1159</b> <b>1188</b>
--	------------------------	-----------------------------	---

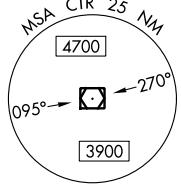
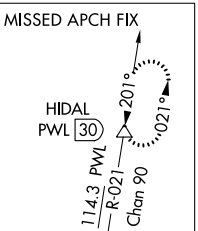
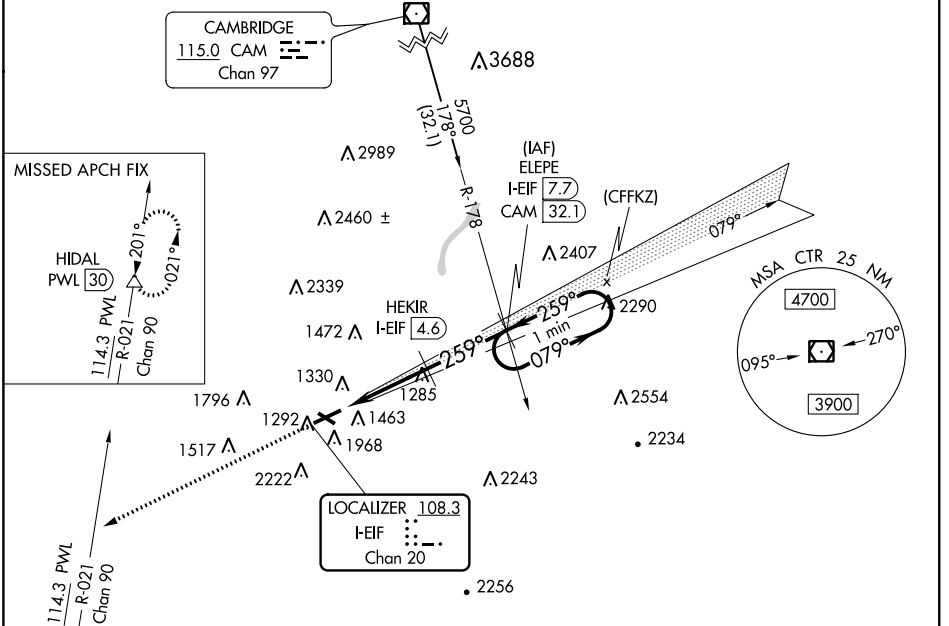
# LOC/DME RWY 26

PITTSFIELD MUNI (PSF)

**⚠** Circling NA south of Rwy 8 and 32. Helicopter visibility reduction below 3/4 SM NA. When local altimeter setting not received, use North Adams altimeter setting and increase all MDA 120 feet and S-26 Cat B visibility 1/4 mile and S-26 Cats C/D visibility 1/2 mile. Night landing: Rwy 8 NA.

**MISSED APPROACH:** Climb to 4000 on heading 259° and PWL VOR/DME R-021 to HIDAL/PWL 30 DME and hold.

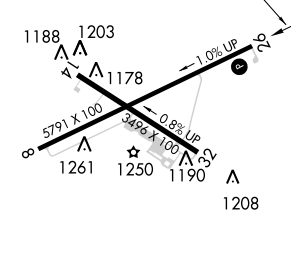
ASOS <b>135.375</b>	ALBANY APP CON <b>132.825 307.2</b>	CLNC DEL <b>128.6</b>	UNICOM <b>122.7</b> (CTAF)
------------------------	--	--------------------------	-------------------------------



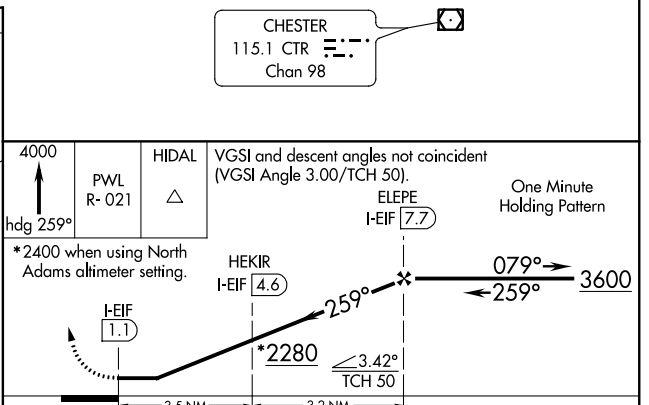
NE-1, 07 DEC 2017 to 04 JAN 2018

NE-1, 07 DEC 2017 to 04 JAN 2018

ELEV 1188	TDZE 1159
-----------	-----------



REIL Rwy 26  
MIRL Rwy 8-26 and 14-32



CATEGORY	A	B	C	D
S-26	1860-1	701 (700-1)	1860-2	701 (700-2)
<b>C</b> CIRCLING	1860-1 672 (700-1)	2160-1½ 972 (1000-1½)	2400-3 1212 (1300-3)	2680-3 1492 (1500-3)

WAAS CH <b>42835</b> <b>W26A</b>	APP CRS <b>259°</b>	Rwy Idg TDZE Apt Elev	<b>5791</b> <b>1159</b> <b>1188</b>
--	------------------------	-----------------------------	---

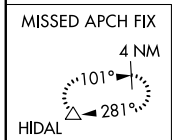
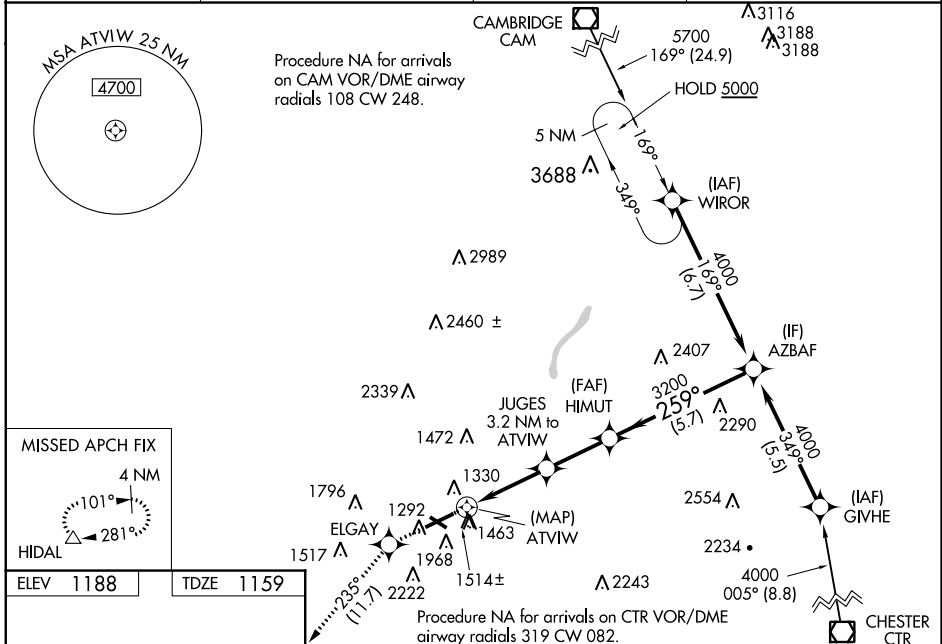
# RNAV (GPS) RWY 26

PITTSFIELD MUNI (PSF)

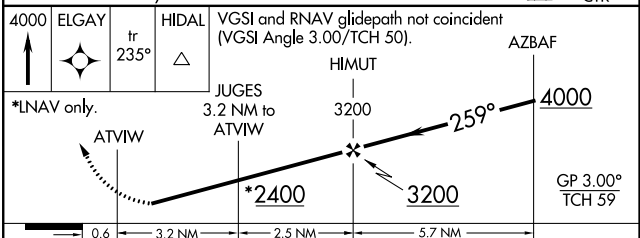
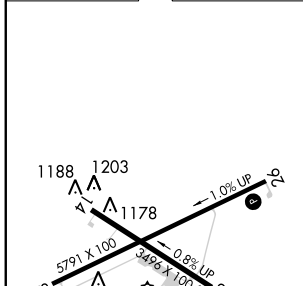
**⚠** DME/DME RNP-0.3 NA. Night landing Rwy 8 NA. Circling NA south of Rws 8 and 32. When local altimeter setting not received, use North Adams altimeter setting and increase all DA 114 feet and all MDA 120 feet. Increase LPV all Cats visibility 1½ miles, LNAV/VNAV all Cats visibility ½ mile, and LNAV Cat B visibility ¼ mile. Inop table does not apply to LNAV Cat C. For inop MALSF when using North Adams altimeter setting, increase LNAV Cats C and D ½ mile. For uncompensated Baro-VNAV systems, LNAV/VNAV NA below -19°C (-2°F) or above 54°C (130°F). Baro-VNAV NA when using North Adams altimeter setting. Helicopter visibility reduction below ¼ SM NA. For inop MALSF when using North Adams altimeter setting, inop table does not apply to LPV.

**⚠** MISSED APPROACH: Climb to 4000 direct ELGAY and on track 235° to HIDAL and hold.

ASOS <b>135.375</b>	ALBANY APP CON <b>132.825 307.2</b>	CLNC DEL <b>128.6</b>	UNICOM <b>122.7 (CTAF) 0</b>
------------------------	--	--------------------------	---------------------------------



ELEV 1188	TDZE 1159
-----------	-----------



CATEGORY	A	B	C	D
LPV DA		1956-2 ½	797 (800-2½)	
LNAV/VNAV DA		1888-2¼	729 (700-2¼)	
LNAV MDA	2060-1	901 (900-1)	2060-2½	901 (900-2½)
<b>C</b> CIRCLING	2060-1¼ 872 (900-1¼)	2160-1½ 972 (1000-1½)	2400-3 1212 (1300-2)	2680-3 1492 (1500-3)

NE-1, 07 DEC 2017 to 04 JAN 2018

NE-1, 07 DEC 2017 to 04 JAN 2018

WAAS CH <b>93935</b> <b>W08A</b>	APP CRS <b>079°</b>	Rwy Idg TDZE Apt Elev	<b>5791</b> <b>1188</b> <b>1188</b>
--	------------------------	-----------------------------	---

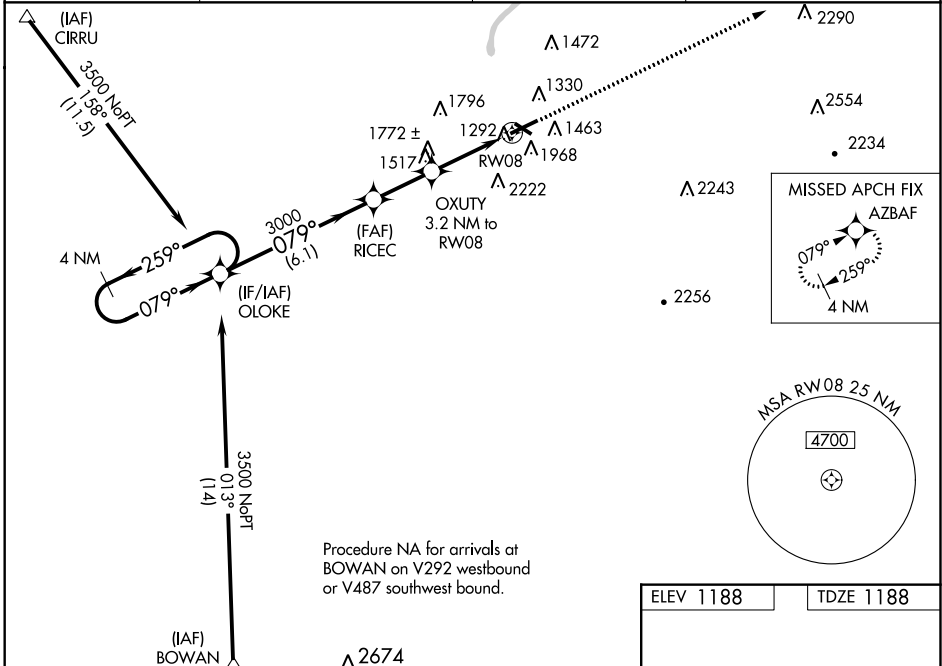
# RNAV (GPS) RWY 8

PITTSFIELD MUNI (PSF)

**⚠** Baro-VNAV NA when using North Adams altimeter setting. For uncompensated Baro-VNAV systems, LNAV/VNAV NA below -20°C (-4°F) or above 54°C (130°F). DME/DME RNP-0.3 NA. When local altimeter setting not received use North Adams altimeter setting and increase all DA 114 feet and all MDA 120 feet, increase LPV visibility all Cats ¼ mile, LNAV/VNAV visibility all Cats 1 mile, and LNAV Cat A visibility ¼ mile. Visibility reduction by helicopters below 1 SM NA. Night landing: Rwy 8 NA. Circling NA south of Rws 8 and 32.

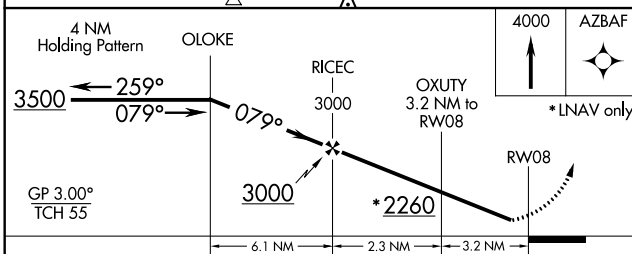
**MISSED APPROACH:**  
Climb to 4000 direct AZBAF and hold.

ASOS <b>135.375</b>	ALBANY APP CON <b>132.825 307.2</b>	CLNC DEL <b>128.6</b>	UNICOM <b>122.7 (CTAF)</b> <b>Ⓛ</b>
------------------------	--	--------------------------	--

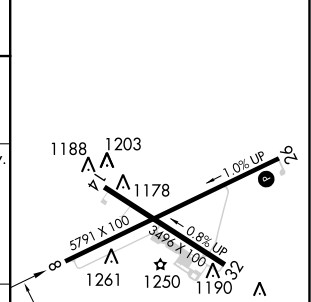


NE-1, 07 DEC 2017 to 04 JAN 2018

NE-1, 07 DEC 2017 to 04 JAN 2018



ELEV 1188	TDZE 1188
-----------	-----------



CATEGORY	A	B	C	D
LPV DA	1475-1		287 (300-1)	
LNAV/VNAV DA	2072-3		884 (900-3)	
LNAV MDA	2000-1 812 (900-1)	2000-1¼ 812 (900-1¼)	2000-2½	812 (900-2½)
<b>Ⓛ</b> CIRCLING	2000-1¼ 812 (900-1¼)	2160-1½ 972 (1000-1½)	2400-3 1212 (1300-3)	2680-3 1492 (1500-3)