

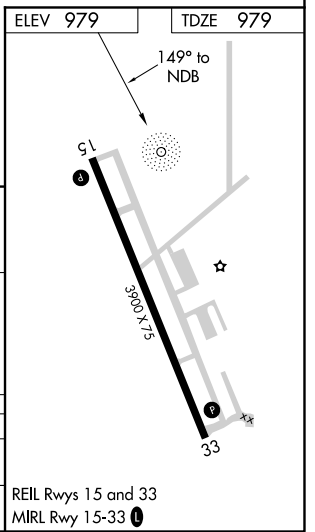
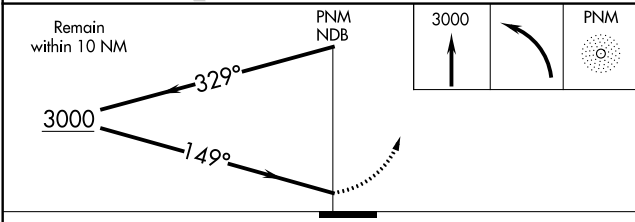
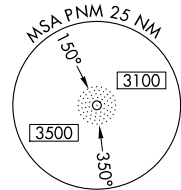
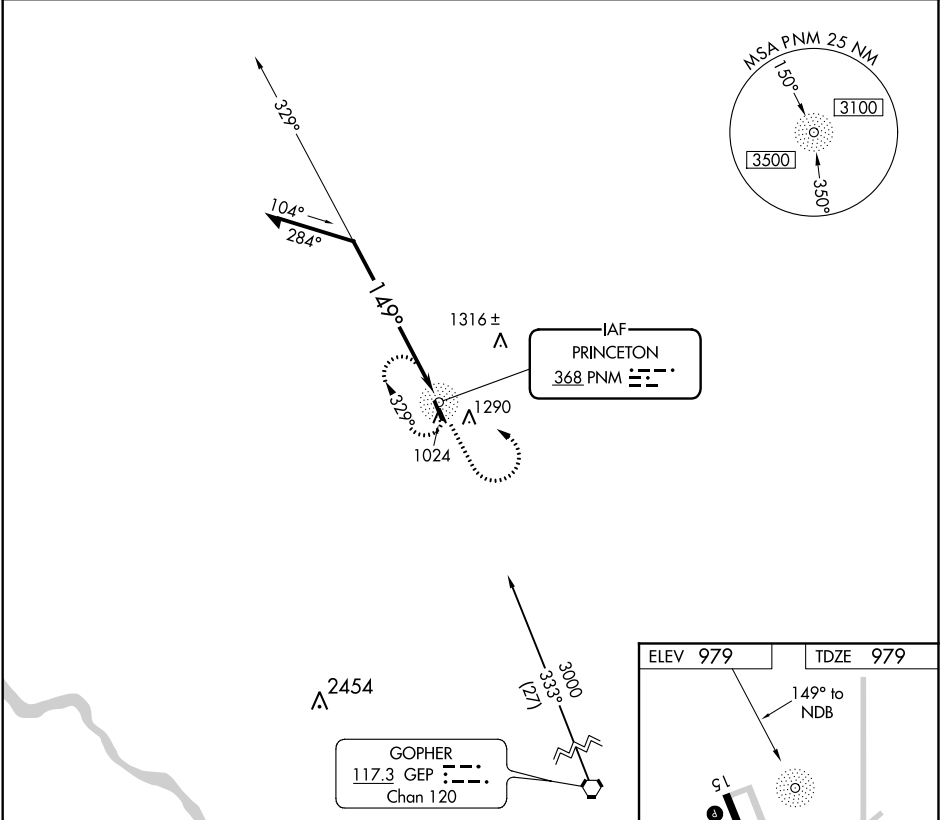
NDB PNM	APP CRS	Rwy Idg	3900
368	149°	TDZE	979
		Apt Elev	979

NDB RWY 15

PRINCETON MUNI (PNM)

MISSED APPROACH: Climb to 3000 then left turn direct PNM NDB and hold.

AWOS-3 119.025	MINNEAPOLIS CENTER 121.05 397.9	PRINCETON RADIO 121.5 122.2 243.0 255.4	UNICOM 123.0 (CTAF)
--------------------------	---	---	-------------------------------



CATEGORY	A	B	C	D
S-15	1560-1	581 (600-1)	1560-1½ 581 (600-1½)	NA
CIRCLING	1640-1	661 (700-1)	1640-1¾ 661 (700-1¾)	NA

NC-1, 07 DEC 2017 to 04 JAN 2018

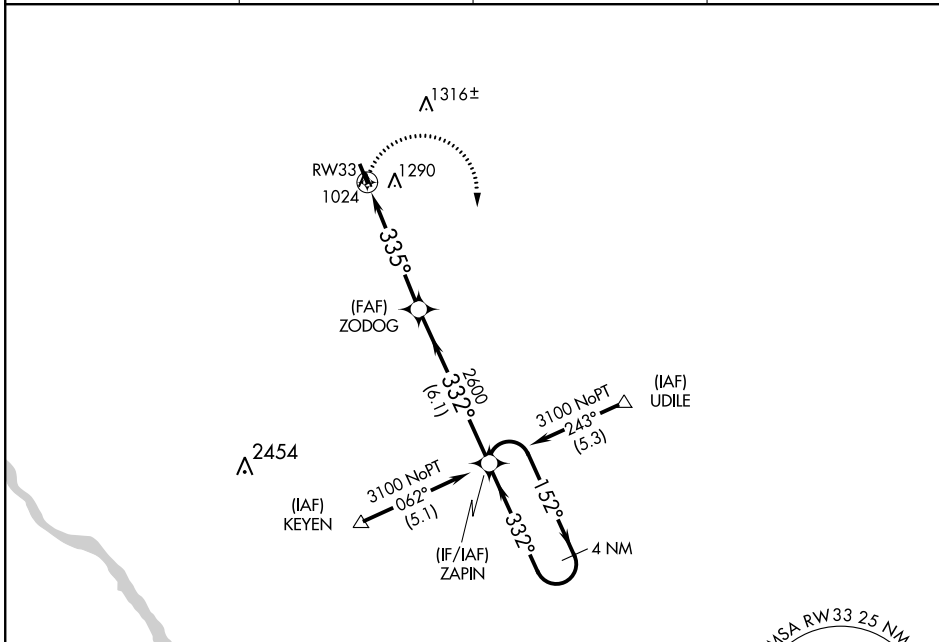
NC-1, 07 DEC 2017 to 04 JAN 2018

APP CRS 335°	Rwy Idg TDZE Apt Elev	3900 979 979
------------------------	-----------------------------	---

RNAV (GPS) RWY 33

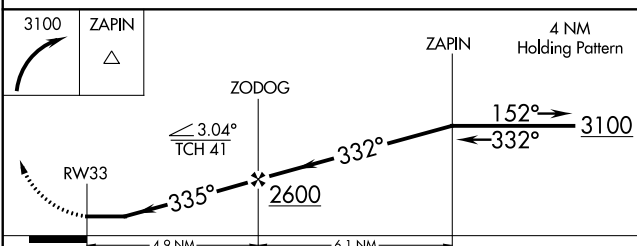
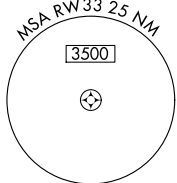
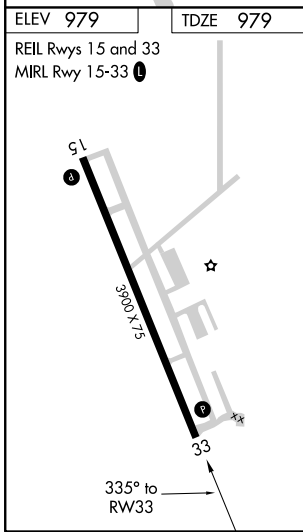
PRINCETON MUNI (PNM)

<p>Procedure NA at night. DME/DME RNP- 0.3 NA.</p>		<p>MISSED APPROACH: Climbing right turn to 3100 direct ZAPIN and hold.</p>	
AWOS-3 119.025	MINNEAPOLIS CENTER 121.05 397.9	PRINCETON RADIO 121.5 122.2 243.0 255.4	UNICOM 123.0 (CTAF)



NC-1, 07 DEC 2017 to 04 JAN 2018

NC-1, 07 DEC 2017 to 04 JAN 2018



CATEGORY	A	B	C	D
LNAV MDA	1500-1	521 (600-1)	1500-1½ 521 (600-1½)	NA
CIRCLING	1640-1	661 (700-1)	1640-1¾ 661 (700-1¾)	NA