

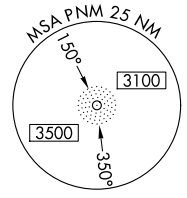
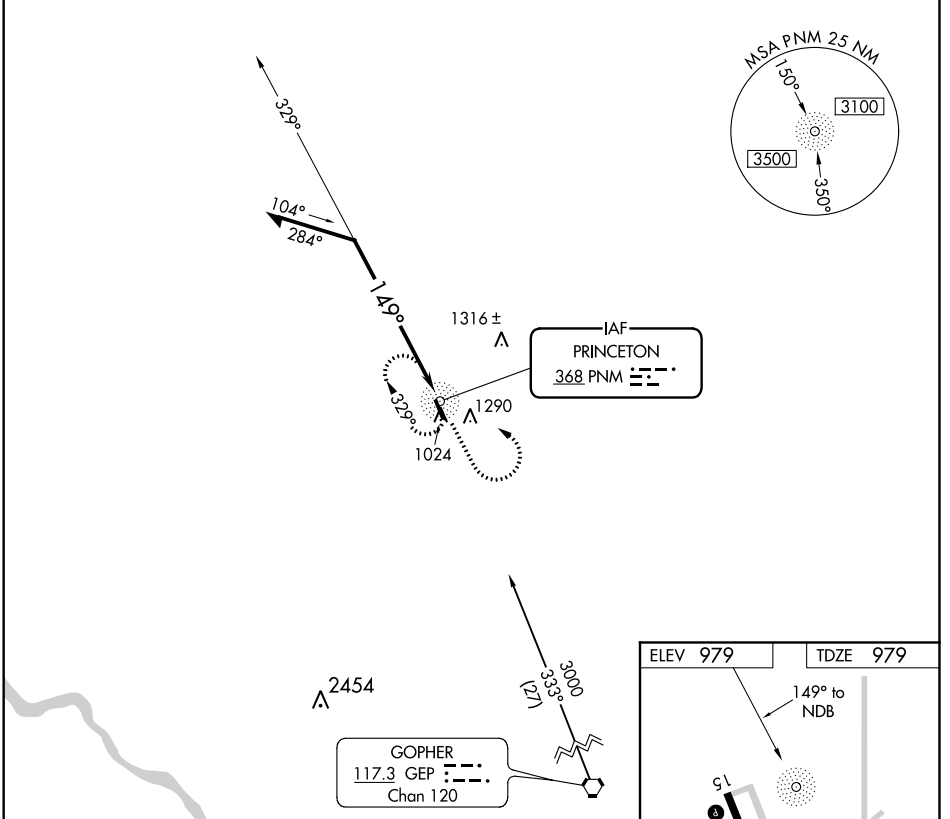
NDB PNM	APP CRS	Rwy Idg	3900
<b>368</b>	<b>149°</b>	TDZE	979
		Apt Elev	979

# NDB RWY 15

PRINCETON MUNI (PNM)

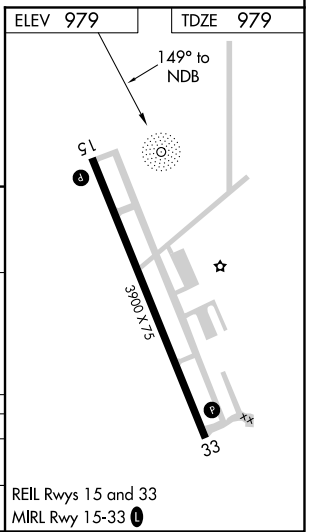
**MISSED APPROACH:** Climb to 3000 then left turn direct PNM NDB and hold.

AWOS-3 <b>119.025</b>	MINNEAPOLIS CENTER <b>121.05 397.9</b>	PRINCETON RADIO <b>121.5 122.2 243.0 255.4</b>	UNICOM <b>123.0 (CTAF)</b>
--------------------------	-------------------------------------------	---------------------------------------------------	-------------------------------



Remain within 10 NM

3000  
329°  
149°  
PNM NDB



CATEGORY	A	B	C	D
S-15	1560-1	581 (600-1)	1560-1½ 581 (600-1½)	NA
CIRCLING	1640-1	661 (700-1)	1640-1¾ 661 (700-1¾)	NA

NC-1, 17 AUG 2017 to 14 SEP 2017

NC-1, 17 AUG 2017 to 14 SEP 2017

APP CRS	Rwy Idg	<b>3900</b>
<b>159°</b>	TDZE	<b>979</b>
	Apt Elev	<b>979</b>

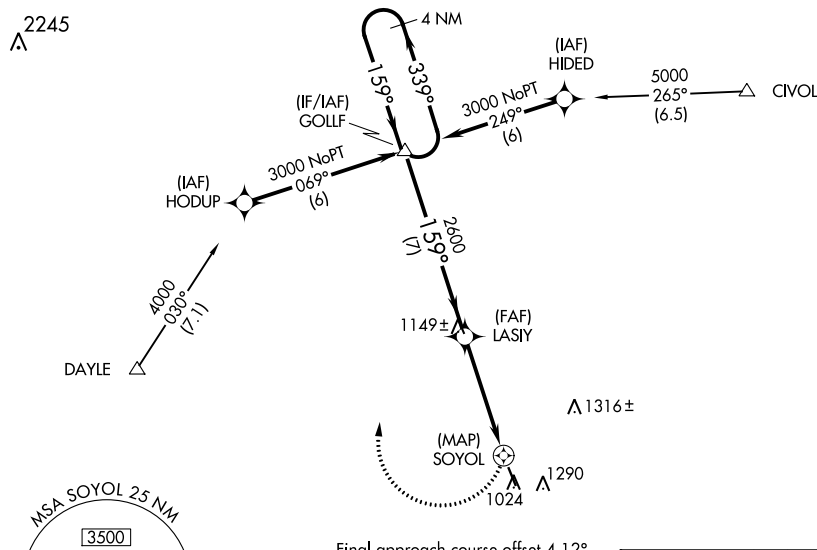
# RNAV (GPS) RWY 15

PRINCETON MUNI (PNM)

When VGSI inoperative, procedure NA at night. DME/DME RNP-0.3 NA. -34°C/-29°F Circling Rwy 33 NA at night.	MISSED APPROACH: Climbing right turn to 3000 direct GOLLF and hold.
------------------------------------------------------------------------------------------------------------------	---------------------------------------------------------------------

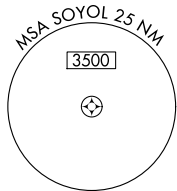
AWOS-3 <b>119.025</b>	MINNEAPOLIS CENTER <b>121.05 397.9</b>	PRINCETON RADIO <b>121.5 122.2 243.0 255.4</b>	UNICOM <b>123.0 (CTAF) 0</b>
--------------------------	-------------------------------------------	---------------------------------------------------	---------------------------------

Procedure NA for arrivals on V413 southbound.



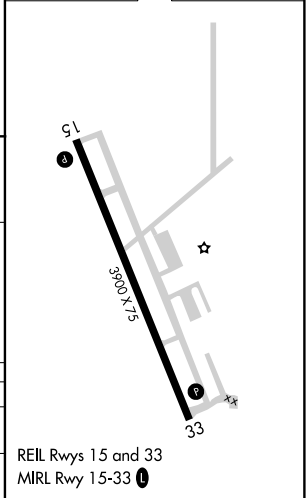
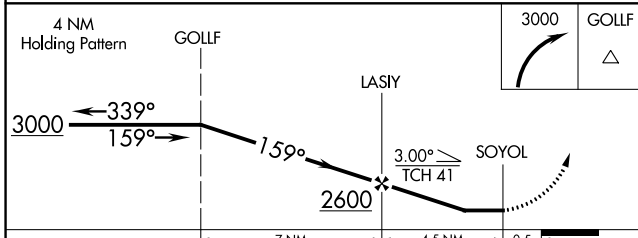
NC-1, 17 AUG 2017 to 14 SEP 2017

NC-1, 17 AUG 2017 to 14 SEP 2017



Final approach course offset 4.12°

ELEV 979	TDZE 979
----------	----------



CATEGORY	A	B	C	D
LNVA MDA	1380-1	401 (500-1)	1380-1½ 401 (500-1½)	NA
CIRCLING	1640-1	661 (700-1)	1640-1¾ 661 (700-1¾)	NA

REIL Rwys 15 and 33  
MIRL Rwy 15-33 0

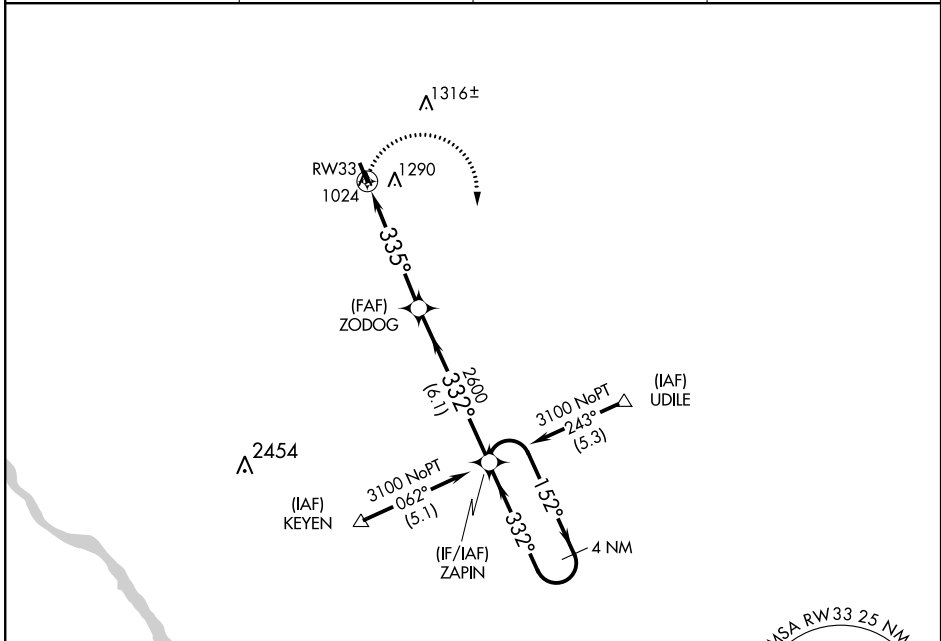
APP CRS <b>335°</b>	Rwy Idg TDZE Apt Elev	<b>3900</b> <b>979</b> <b>979</b>
------------------------	-----------------------------	-----------------------------------------

# RNAV (GPS) RWY 33

PRINCETON MUNI (PNM)

-34°C/-29°F	Procedure NA at night. DME/DME RNP- 0.3 NA.	MISSED APPROACH: Climbing right turn to 3100 direct ZAPIN and hold.
-------------	------------------------------------------------	---------------------------------------------------------------------

AWOS-3 <b>119.025</b>	MINNEAPOLIS CENTER <b>121.05 397.9</b>	PRINCETON RADIO <b>121.5 122.2</b> <b>243.0 255.4</b>	UNICOM <b>123.0 (CTAF)</b>
--------------------------	-------------------------------------------	-------------------------------------------------------------	-------------------------------

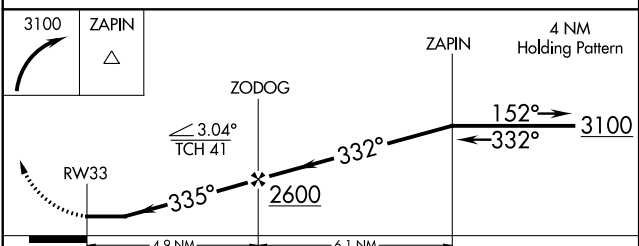
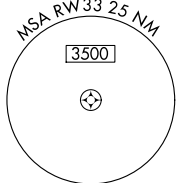
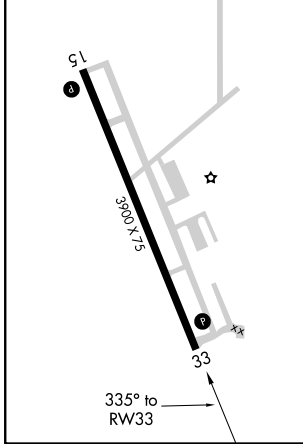


NC-1, 17 AUG 2017 to 14 SEP 2017

NC-1, 17 AUG 2017 to 14 SEP 2017

ELEV 979	TDZE 979
----------	----------

REIL Rwys 15 and 33  
MIRL Rwy 15-33



CATEGORY	A	B	C	D
LNAV MDA	1500-1	521 (600-1)	1500-1½ 521 (600-1½)	NA
CIRCLING	1640-1	661 (700-1)	1640-1¾ 661 (700-1¾)	NA

**TAKEOFF MINIMUMS, (OBSTACLE) DEPARTURE PROCEDURES, AND  
DIVERSE VECTOR AREA (RADAR VECTORS)**  
INSTRUMENT APPROACH PROCEDURE CHARTS

17229

**IFR TAKEOFF MINIMUMS AND (OBSTACLE) DEPARTURE PROCEDURES**

Civil Airports and Selected Military Airports

ALL USERS: Airports that have Departure Procedures (DPs) designed specifically to assist pilots in avoiding obstacles during the climb to the minimum enroute altitude, and/or airports that have civil IFR takeoff minimums other than standard, are listed below. Takeoff Minimums and Departure Procedures apply to all runways unless otherwise specified. Altitudes, unless otherwise indicated, are minimum altitudes in MSL.

DPs specifically designed for obstacle avoidance are referred to as Obstacle Departure Procedures (ODPs) and are textually described below, or published separately as a graphic procedure. If the ODP is published as a graphic procedure, its name will be listed below, and it can be found in either this volume (civil), or the applicable military volume, as appropriate. Users will recognize graphic obstacle DPs by the term "(OBSTACLE)" included in the procedure title; e.g., TETON TWO (OBSTACLE). If not specifically assigned an ODP, SID, or radar vector as part of an IFR clearance, an ODP may be required to be flown for obstacle clearance, even though not specifically stated in the IFR clearance. When doing so in this manner, ATC should be informed when the ODP being used contains a specified route to be flown, restrictions before turning, and/or altitude restrictions.

Some ODPs, which are established solely for obstacle avoidance, require a climb in visual conditions to cross the airport, a fix, or a NAVAID in a specified direction, at or above a specified altitude. These procedures are called Visual Climb Over Airport (VCOA). To ensure safe and efficient operations, the pilot must verbally request approval from ATC to fly the VCOA when requesting their IFR clearance.

At some locations where an ODP has been established, a diverse vector area (DVA) may be created to allow radar vectors to be used in lieu of an ODP. DVA information will state that headings will be as assigned by ATC and climb gradients, when applicable, will be published immediately following the specified departure procedure.

Graphic DPs designed by ATC to standardize traffic flows, ensure aircraft separation and enhance capacity are referred to as "Standard Instrument Departures (SIDs)". SIDs also provide obstacle clearance and are published under the appropriate airport section. ATC clearance must be received prior to flying a SID.

CIVIL USERS NOTE: Title 14 Code of Federal Regulations Part 91 prescribes standard takeoff rules and establishes takeoff minimums for certain operators as follows: (1) For aircraft, other than helicopters, having two engines or less – one statute mile visibility. (2) For aircraft having more than two engines – one-half statute mile visibility. (3) For helicopters – one-half statute mile visibility. These standard minima apply in the absence of any different minima listed below.

MILITARY USERS NOTE: Civil (nonstandard) takeoff minima are published below. For military takeoff minima, refer to appropriate service directives.

NAME	TAKEOFF MINIMUMS	NAME	TAKEOFF MINIMUMS
------	------------------	------	------------------

**ABERDEEN, SD**

ABERDEEN RGNL (ABR)  
TAKEOFF MINIMUMS AND (OBSTACLE)  
DEPARTURE PROCEDURES  
AMDT 1 17061 (FAA)

TAKEOFF OBSTACLE NOTES: **Rwy 13**, lt 4' from DER, 1' right of centerline, 1' AGL/1302' MSL. Sign 12' from DER, 256' left of centerline, 4' AGL/1302' MSL. **Rwy 31**, runway end ident, beginning 39' from DER, 125' right of centerline, up to 5' AGL/1304' MSL. Runway end ident 40' from DER, 126' left of centerline, 5' AGL/1303' MSL. Tree 1278' from DER, 745' left of centerline, 1351' MSL. Tree 1309' from DER, 716' left of centerline, 1352' MSL.

**ADA/TWIN VALLEY, MN**

NORMAN COUNTY ADA/TWIN VALLEY  
(D00)  
TAKEOFF MINIMUMS AND (OBSTACLE)  
DEPARTURE PROCEDURES  
ORIG 11013 (FAA)

TAKEOFF MINIMUMS: **Rwy 15**, 300-2 or std. w/min climb of 205' per NM to 1300, or alternatively, with standard takeoff minimums and a normal 200' per NM climb gradient, takeoff must occur no later than 1300' prior to DER.

TAKEOFF OBSTACLE NOTES: **Rwy 15**, tree 176' from DER 383' left of centerline, 50' AGL/999' MSL. Tree 178' from DER 307' right of centerline, 50' AGL/999' MSL. Tree 1,305' from DER 493' right of centerline, 50' AGL/1,004' MSL. Tree 176' from DER 383' left of centerline, 50' AGL/999' MSL. **Rwy 33**, tree 85' from DER 282' left of centerline, 50' AGL/989' MSL. Multiple buildings beginning 2' from DER 468' right of centerline, up to 50' AGL/954' MSL.

17229

**TAKEOFF MINIMUMS, (OBSTACLE) DEPARTURE PROCEDURES, AND  
DIVERSE VECTOR AREA (RADAR VECTORS)**

# TAKEOFF MINIMUMS, (OBSTACLE) DEPARTURE PROCEDURES, AND DIVERSE VECTOR AREA (RADAR VECTORS)

17229

**AITKIN, MN**
**AITKIN MUNI-STEVE KURTZ FIELD (AIT)**  
**TAKEOFF MINIMUMS AND (OBSTACLE)**  
**DEPARTURE PROCEDURES**

AMDT 4 15232 (FAA)

DEPARTURE PROCEDURE: **Rwy 8, 26, NA-**  
Environmental.

**TAKEOFF OBSTACLE NOTES: Rwy 16,** trees beginning 6' from DER, 86' left of centerline, up to 32' AGL/1238' MSL. Trees and road beginning 239' from DER, 357' left of centerline, up to 59' AGL/1265' MSL. Trees beginning 335' from DER, 114' right of centerline, up to 54' AGL/1260' MSL. Trees beginning 1352' from DER, 189' left of centerline, up to 94' AGL/1300' MSL. Trees beginning 1759' from DER, 5' right of centerline, up to 93' AGL/1299' MSL. Trees beginning 3354' from DER, 16' left of centerline, up to 100' AGL/1332' MSL. Trees beginning 3558' from DER, 48' right of centerline, up to 100' AGL/1333' MSL. **Rwy 34,** trees beginning 121' from DER, 408' right of centerline, up to 29' AGL/1235' MSL. Trees beginning 320' from DER, 406' right of centerline, up to 62' AGL/1268' MSL. Trees beginning 2084' from DER, 108' right of centerline, up to 74' AGL/1280' MSL. Trees beginning 1906' from DER, 179' left of centerline, up to 82' AGL/1288' MSL.

**ALBERT LEA, MN**
**ALBERT LEA MUNI (AEL)**  
**TAKEOFF MINIMUMS AND (OBSTACLE)**  
**DEPARTURE PROCEDURES**

AMDT 1 11293 (FAA)

**TAKEOFF OBSTACLE NOTES: Rwy 5,** sign 2074' from DER, 952' right of centerline, 47' AGL/1316' MSL. **Rwy 17,** tree 9' from DER, 349' right of centerline, 14' AGL/1263' MSL. Trees beginning 711' from DER, 121' left of centerline, up to 71' AGL/1330' MSL. **Rwy 23,** trees beginning 77' from DER, 259' left of centerline, up to 75' AGL/1324' MSL. Trees beginning 127' from DER, 326' right of centerline, up to 36' AGL/1285' MSL. **Rwy 35,** trees beginning 8' from DER, 397' right of centerline, up to 51' AGL/1290' MSL.

**ALEXANDRIA, MN**
**CHANDLER FIELD (AXN)**  
**TAKEOFF MINIMUMS AND (OBSTACLE)**  
**DEPARTURE PROCEDURES**

DEPARTURE PROCEDURE: **Rwys 4, 13, 22,** when weather is below 200-1, climb runway heading to 1800 before turning.

**APPLETON, MN**
**APPLETON MUNI (AQP)**  
**TAKEOFF MINIMUMS AND (OBSTACLE)**  
**DEPARTURE PROCEDURES**  
 ORIG-A 10126 (FAA)

DEPARTURE PROCEDURE: **Rwy 4,** climb heading 039° to 2000 before turning right. **Rwy 13,** climb heading 130° to 2500 before turning right. **Rwy 22,** climb heading 219° to 2400 before turning left. **Rwy 31,** climb heading 300° to 2000 before turning left.

**TAKEOFF OBSTACLE NOTES: Rwy 13,** trees beginning 91' from DER, 464' left of centerline, up to 100' AGL/1134' MSL. Trees beginning 576' from DER, 388' right of centerline, up to 100' AGL/1120' MSL. Tower 2.3 NM from DER, 2.4 right of centerline, 1283' AGL/2318' MSL.

17229

# TAKEOFF MINIMUMS, (OBSTACLE) DEPARTURE PROCEDURES, AND DIVERSE VECTOR AREA (RADAR VECTORS)

**AUSTIN, MN**
**AUSTIN MUNI (AUM)**  
**TAKEOFF MINIMUMS AND (OBSTACLE)**  
**DEPARTURE PROCEDURES**  
 ORIG 08045 (FAA)

**TAKEOFF OBSTACLE NOTES: Rwy 17,** Multiple trees beginning 809' from DER, 663' right of centerline, up to 61' AGL/1285' MSL. **Rwy 35,** Tree 1380' from DER, 484' right of centerline, 100' AGL/1314' MSL.

**BEACH, ND**
**BEACH (20U)**  
**TAKEOFF MINIMUMS AND (OBSTACLE)**  
**DEPARTURE PROCEDURES**  
 ORIG 16203 (FAA)

DEPARTURE PROCEDURE: **Rwy 12,** climb heading 125° to 4000 before turning left.

**TAKEOFF OBSTACLE NOTES: Rwy 12,** airfield lt 9' from DER, 27' right of centerline, 2749' MSL. Vehicles on road beginning 39' from DER, 371' right of centerline, up to 2764' MSL. Terrain 95' from DER, 416' left of centerline, 2751' MSL. Vehicles on road beginning 444' from DER, 379' right of centerline, up to 2766' MSL. Vehicle on road 1230' from DER, 182' left of centerline, 2780' MSL. Vehicle on road 1237' from DER, 198' left of centerline, 2781' MSL. Vehicle on road 1276' from DER, 226' left of centerline, 2782' MSL. Vehicles on road beginning 1326' from DER, 273' left of centerline, up to 2785' MSL. Vehicle on road 1474' from DER, 418' left of centerline, 2786' MSL. Vehicles on road 1652' from DER, 586' left of centerline, 2790' MSL. Vehicles on road, tree, and building beginning 1671' from DER, 664' left of centerline, up to 2808' MSL. **Rwy 30,** airfield lt beginning 10' from DER, 9' right of centerline, up to 1' AGL/2757' MSL.

**BAUDETTE, MN**
**BAUDETTE INTL (BDE)**  
**TAKEOFF MINIMUMS AND (OBSTACLE)**  
**DEPARTURE PROCEDURES**  
 AMDT 1 10154 (FAA)

DEPARTURE PROCEDURE: **Rwy 12,** climb heading 117° to 1700 before turning northbound.

**TAKEOFF OBSTACLE NOTES: Rwy 12,** trees, pipes, and markers beginning 61' from DER, 354' right of centerline, up to 100' AGL/1184' MSL. Trees beginning 593' from DER, 138' left of centerline, up to 21' AGL/1100' MSL. Rod on OL tank 4132' from DER, 1233' right of centerline, 120' AGL/1204' MSL. **Rwy 30,** trees beginning 15' from DER, 348' right of centerline, 12' AGL/1096' MSL. Trees beginning 2036' from DER, 532' left of centerline, 64' AGL/1143' MSL.

17 AUG 2017 to 14 SEP 2017

17 AUG 2017 to 14 SEP 2017

**TAKEOFF MINIMUMS, (OBSTACLE) DEPARTURE PROCEDURES, AND**

17229

**DIVERSE VECTOR AREA (RADAR VECTORS)****BELLE FOURCHE, SD**

BELLE FOURCHE MUNI (EFC)

TAKEOFF MINIMUMS AND (OBSTACLE)

DEPARTURE PROCEDURES

AMDT 2 09015 (FAA)

TAKEOFF MINIMUMS: **Rwys 18,36**, NA. **Rwy 14**, std. w/ min. climb of 240' per NM to 9000 or 1400-3 for climb in visual conditions. **Rwy 32**, std. w/ min. climb of 413' per NM to 3900.

DEPARTURE PROCEDURE: **Rwy 14**, for climb in visual conditions: cross Belle Fourche Muni airport at or above 4400 MSL before proceeding on course. **Rwy 32**, climb heading 321° to 3900 before proceeding southbound.

TAKEOFF OBSTACLE NOTES: **Rwy 14**, trees 651' from DER, 547' left of centerline, up to 20' AGL/3299' MSL.

**Rwy 32**, trees 857' from DER, 150' left of centerline, up to 20' AGL/3199' MSL. Trees 3880' from DER, 966' right of centerline, up to 20' AGL/3289' MSL.

**BEMIDJI, MN**

BEMIDJI RGNL (BJI)

TAKEOFF MINIMUMS AND (OBSTACLE)

DEPARTURE PROCEDURES

AMDT 3 08213 (FAA)

TAKEOFF OBSTACLE NOTES: **Rwy 7**, vegetation beginning 859' from DER, 544' right of centerline, up to 62' AGL/1442' MSL. Vegetation beginning 1404' from DER, 683' left of centerline, up to 44' AGL/1424' MSL.

**Rwy 13**, vehicle on road, 541' from DER, 525' right of centerline, 15' AGL/1398' MSL. **Rwy 25**, poles beginning 1337' from DER, 205' right of centerline up to 61' AGL/1445' MSL. Trees beginning 1414' from DER, 254' left of centerline, up to 57' AGL/1441' MSL. Tree 1406' from DER, 233' right of centerline, 53' AGL/1437' MSL.

**BENSON, MN**

BENSON MUNI (BBB)

TAKEOFF MINIMUMS AND (OBSTACLE)

DEPARTURE PROCEDURES

AMDT 1 09127 (FAA)

TAKEOFF OBSTACLE NOTES: **Rwy 14**, numerous trees beginning 838' from DER, 246' right of centerline, up to 33' AGL/1087' MSL. Numerous trees beginning 1232' from DER, 64' left of centerline, up to 69' AGL/1108' MSL. Sign 206' from DER, 198' left of centerline, 19' AGL/1044' MSL. Tower 4884' from DER, 274' right of centerline, 126' AGL/1161' MSL. **Rwy 32**, Tree 2380' from DER, 646' left of centerline, 68' AGL/1107' MSL. Multiple fences beginning 13' from DER, 361' left of centerline, up to 8' AGL/1043' MSL.

**BIGFORK, MN**

BIGFORK MUNI (FOZ)

TAKEOFF MINIMUMS AND (OBSTACLE)

DEPARTURE PROCEDURES

ORIG -A 10126 (FAA)

TAKEOFF MINIMUMS: **Rwy 15**, 400-1 or std. with a min. climb of 332' per NM to 1900.

**BISMARCK, ND**

BISMARCK MUNI (BIS)

TAKEOFF MINIMUMS AND (OBSTACLE)

DEPARTURE PROCEDURES

AMDT 8 11069 (FAA)

DEPARTURE PROCEDURE: **Rwy 13**, climb heading 131° to 2400 before turning right. **Rwy 21**, climb heading 212° to 3700 before turning left. **Rwy 31**, climb heading 311° to 2200 before turning right.

TAKEOFF OBSTACLE NOTES: **Rwy 13**, trees and pole beginning 864' from DER, 721' left of centerline, up to 56' AGL/1696' MSL. **Rwy 31**, light pole 1424' from DER, 872' right of centerline, 43' AGL/1702' MSL.

**BLUE EARTH, MN**

BLUE EARTH MUNI (SBU)

TAKEOFF MINIMUMS AND (OBSTACLE)

DEPARTURE PROCEDURES

ORIG 16091 (FAA)

TAKEOFF MINIMUMS: **Rwy 3, 21**, NA-Environmental.

TAKEOFF OBSTACLE NOTES: **Rwy 16**, poles beginning 1017' from DER, 586' left of centerline, up to 32' AGL/1142' MSL. **Rwy 34**, trees beginning 3407' from DER, 523' right of centerline, up to 100' AGL/1200' MSL.

**BOTTINEAU, ND**

BOTTINEAU MUNI (D09)

TAKEOFF MINIMUMS AND (OBSTACLE)

DEPARTURE PROCEDURES

AMDT 1 10154 (FAA)

TAKEOFF MINIMUMS: **Rwys 3, 21**, NA.

DEPARTURE PROCEDURE: **Rwy 13**, climb heading 127° to 2200 before turning left. **Rwy 31**, climb heading 307° to 2600 before turning right.

TAKEOFF OBSTACLE NOTES: **Rwy 31**, street light 116' from DER, 474' left of centerline, 16' AGL/1700' MSL.

**BOWMAN, ND**

BOWMAN RGNL (BWW)

TAKEOFF MINIMUMS AND (OBSTACLE)

DEPARTURE PROCEDURES

ORIG 16091 (FAA)

TAKEOFF OBSTACLE NOTES: **Rwy 13**, terrain beginning 171' from DER, 334' right of centerline, 3013' MSL.

Terrain 4199' from DER, 1275' left of centerline, 3077' MSL. **Rwy 31**, terrain beginning 18' from DER, 182' left of centerline, 2958' MSL. Pole 2360' from DER, 395' right of centerline, 33' AGL/3005' MSL.

**BRAINERD, MN**

BRAINERD LAKES RGNL (BRD)

TAKEOFF MINIMUMS AND (OBSTACLE)

DEPARTURE PROCEDURES

AMDT 6 12320 (FAA)

TAKEOFF OBSTACLE NOTES: **Rwy 16**, multiple trees beginning 1830' from DER, 749' left of centerline, up to 74' AGL/1314' MSL. **Rwy 23**, multiple trees beginning 1485' from DER, 91' left of centerline, up to 50'

AGL/1299' MSL. Tree 2426' from DER, 184' right of centerline, 50' AGL/1297' MSL. **Rwy 34**, trees beginning 1635' from DER, left and right of centerline, up to 86' AGL/1312' MSL.

17229

**TAKEOFF MINIMUMS, (OBSTACLE) DEPARTURE PROCEDURES, AND****DIVERSE VECTOR AREA (RADAR VECTORS)**



## TAKEOFF MINIMUMS, (OBSTACLE) DEPARTURE PROCEDURES, AND



17229

## DIVERSE VECTOR AREA (RADAR VECTORS)

**BRITTON, SD**

BRITTON MUNI (BTN)

TAKEOFF MINIMUMS AND (OBSTACLE)  
DEPARTURE PROCEDURES

AMDT 3 13010 (FAA)

TAKEOFF MINIMUMS: **Rwy 1, 19**, NA-Environmental. TAKEOFF OBSTACLE NOTES: **Rwy 13**, trees, poles and terrain beginning 382' from DER, 9' right of centerline, up to 81' AGL/1439' MSL. Trees, poles, vehicles on road and terrain beginning 1286' from DER, 17' left of centerline, up to 75' AGL/1449' MSL. **Rwy 31**, trees and vehicles on road beginning 578' from DER, 185' right of centerline, up to 66' AGL/1375' MSL. Tree and vehicles on road beginning 234' from DER, 413' left of centerline, up to 61' AGL/1370' MSL.

**BROOKINGS, SD**

BROOKINGS RGNL (BKX)

TAKEOFF MINIMUMS AND (OBSTACLE)  
DEPARTURE PROCEDURES

AMDT 2 15176 (FAA)

TAKEOFF OBSTACLE NOTES: **Rwy 12**, building 1297' from DER, 734' right of centerline, 38' AGL/1681' MSL. **Rwy 17**, trees beginning 1219' from DER, 562' left of centerline, up to 82' AGL/1733' MSL. Trees beginning 2097' from DER, 252' left of centerline, up to 82' AGL/1728' MSL. **Rwy 35**, trees beginning 481' from DER, 407' right of centerline, up to 45' AGL/1641' MSL. Railroad beginning 514' from DER, crossing centerline from right to left, 23' AGL/1626' MSL. Trees 701' from DER, 216' left of centerline, 35' AGL/1631' MSL.

**BUFFALO, MN**

BUFFALO MUNI (CFE)

TAKEOFF MINIMUMS AND (OBSTACLE)  
DEPARTURE PROCEDURES

ORIG 11013 (FAA)

TAKEOFF MINIMUMS: **Rwy 18**, 300-1½ or std. w/min climb of 403' per NM to 1200. TAKEOFF OBSTACLE NOTES: **Rwy 18**, building 613' from DER, 608' right of centerline, up to 25' AGL/984' MSL. Vehicle on road 710' from DER, 641' right of centerline, up to 17' AGL/986' MSL. Trees beginning 1000' from DER, 615' left of centerline, up to 100' AGL/1059' MSL. **Rwy 36**, building 361' from DER, 262' left of centerline, up to 25' AGL/994' MSL. Vehicle on road 845' from DER, 701' left of centerline, up to 15' AGL/994' MSL. Trees beginning 1506' from DER, 350' right of centerline, up to 100' AGL/1089' MSL. Trees beginning 1508' from DER, 129' left of centerline, up to 100' AGL/1109' MSL.

**CAMBRIDGE, MN**

CAMBRIDGE MUNI (CBG)

TAKEOFF MINIMUMS AND (OBSTACLE)  
DEPARTURE PROCEDURES

ORIG 12096 (FAA)

TAKEOFF OBSTACLE NOTES: **Rwy 16**, navaid 38' from DER, 78' left of centerline, 2' AGL/941' MSL. Poles beginning 1203' from DER, 140' left of centerline, up to 66' AGL/1007' MSL. Navaid 40' from DER 81' right of centerline, 2' AGL/941' MSL. Trees beginning 198' from DER, 8' left and right of centerline, up to 100' AGL/1011' MSL. Fence post 176' from DER, 403' right of centerline, 8' AGL/947' MSL. Vehicles on road 191' from DER, 431' right of centerline, 15' AGL/954' MSL. **Rwy 34**, terrain beginning 167' from DER, 374' left of centerline, up to 951' MSL. Fence post 178' from DER, 481' left of centerline, 14' AGL/959' MSL. Fence 615' from DER, 329' left of centerline, 13' AGL/958' MSL. Vehicles on road 12' from DER, 492' left and right of centerline, 15' AGL/969' MSL. Trees beginning 498' from DER, 12' left and right of centerline, up to 100' AGL/1 020' MSL. Building 427' from DER, 538' right of centerline, 24' AGL/969' MSL.

**CANBY, MN**

MYERS FIELD (CNB)

TAKEOFF MINIMUMS AND (OBSTACLE)  
DEPARTURE PROCEDURES

AMDT 1 10210 (FAA)

TAKEOFF OBSTACLE NOTES: **Rwy 12**, numerous poles beginning 40' from DER, 421' left and right of centerline, up to 36' AGL/1216' MSL. Truck on roads beginning 134' from DER, 37' left and right of centerline, up to 22' AGL/1202' MSL. Tree 3' from DER, 159' right of centerline, 7' AGL/1187' MSL. **Rwy 30**, numerous trees beginning 726' from DER, 176' left of centerline, up to 70' AGL/1278' MSL. Tree 1338' from DER, 716' right of centerline, 68' AGL/1268' MSL.

**CANDO, ND**

CANDO MUNI (9D7)

TAKEOFF MINIMUMS AND (OBSTACLE)  
DEPARTURE PROCEDURES

ORIG 15232 (FAA)

TAKEOFF OBSTACLE NOTES: **Rwy 16**, vehicles on road 443' from DER, 524' left of centerline, 15' AGL/1495' MSL. Lt support structure 10' from DER, 10' right of centerline, 3' AGL/1484' MSL. **Rwy 34**, poles beginning 382' from DER, 465' right of centerline, up to 32' AGL/1513' MSL. Building 277' from DER, 574' right of centerline, 22' AGL/1503' MSL. Vehicles on road beginning 596' from DER, 25' right of centerline, 15' AGL/1500' MSL. Vehicles on road beginning 754' from DER, 16' left of centerline, 15' AGL/1504' MSL. Lt support structure 10' from DER, 9' right of centerline, 3' AGL/1483' MSL. Tank 344' from DER, 470' right of centerline, 9' AGL/1490' MSL.

**CARRINGTON, ND**

CARRINGTON MUNI (46D)

TAKEOFF MINIMUMS AND (OBSTACLE)  
DEPARTURE PROCEDURES

ORIG 13178 (FAA)

TAKEOFF OBSTACLE NOTES: **Rwy 13**, trees beginning 2097' from DER, 314' left of centerline, up to 100' AGL/1676' MSL. **Rwy 31**, terrain 60' from DER, 481' left of centerline, 1614' MSL. Trees beginning 603' from DER, 341' left of centerline, up to 100' AGL/1709' MSL.

17229



## TAKEOFF MINIMUMS, (OBSTACLE) DEPARTURE PROCEDURES, AND



## DIVERSE VECTOR AREA (RADAR VECTORS)

**TAKEOFF MINIMUMS, (OBSTACLE) DEPARTURE PROCEDURES, AND  
DIVERSE VECTOR AREA (RADAR VECTORS)**

17229

**CASSELTON, ND**

CASSELTON ROBERT MILLER RGNL  
(5N8)

TAKEOFF MINIMUMS AND (OBSTACLE)  
DEPARTURE PROCEDURES

ORIG 07354 (FAA)

TAKEOFF MINIMUMS: **Rwy 31**, 400-2½ or std. w/ a min. climb of 212' per NM to 1400 or alternatively, with standard takeoff minimums and a normal 200'/NM climb gradient, takeoff must occur no later than 1700' prior to DER.

TAKEOFF OBSTACLE NOTES: **Rwy 13**, railroad 30' from DER, 505' right of centerline, 23' AGL/945' MSL. Vehicle on road 449' from DER, 300' left of centerline, 15' AGL/949' MSL. **Rwy 31**, trees 2251' from DER, 456' left of centerline, up to 100' AGL/1052' MSL.

**CAVALIER, ND**

CAVALIER MUNI (2C8)

TAKEOFF MINIMUMS AND (OBSTACLE)  
DEPARTURE PROCEDURES

AMDT 1 12264 (FAA)

TAKEOFF OBSTACLE NOTES: **Rwy 16**, trees beginning 83' from DER, 454' left of centerline, up to 77' AGL/963' MSL. Trees beginning 751' from DER, 615' right of centerline, up to 77' AGL/963' MSL. Power pole 1233' from DER, 544' right of centerline, 38' AGL/927' MSL. Power poles beginning 1445' from DER, 330' left of centerline, up to 45' AGL/931' MSL. Bean elevator 1603' from DER, 450' left of centerline, 83' AGL/1003' MSL. Tank 1736' from DER, 434' left of centerline, 83' AGL/969' MSL. **Rwy 34**, trees beginning 1053' from DER, 623' left of centerline, up to 65' AGL/959' MSL. Trees beginning 2005' from DER, 393' right of centerline, up to 65' AGL/954' MSL.

**CHAMBERLAIN, SD**

CHAMBERLAIN MUNI (9V9)

TAKEOFF MINIMUMS AND (OBSTACLE)  
DEPARTURE PROCEDURES

AMDT 1 12348 (FAA)

TAKEOFF MINIMUMS: **Rwys 18,36**, NA-Environmental. TAKEOFF OBSTACLE NOTES: **Rwy 13**, trees left and right of centerline beginning 100' from DER, up to 47' AGL/1725' MSL. Pole 1116' from DER, 712' left of centerline, 32' AGL/1710' MSL. **Rwy 31**, rising terrain 91' from DER, 290' right of centerline, 1702' MSL. Vehicle on road 1072' from DER, from 553' to 781' right of centerline, 15' AGL/1728' MSL. Trees left and right of centerline beginning 1359' from DER, up to 71' AGL/1767' MSL. Pole 1201' from DER, 701' right of centerline, 45' AGL/1741' MSL.

**CLARK, SD**

CLARK COUNTY (8D7)

TAKEOFF MINIMUMS AND (OBSTACLE)  
DEPARTURE PROCEDURES

ORIG 17229 (FAA)

TAKEOFF MINIMUMS: **Rwys 3, 21**, NA - Environmental.

**Rwy 31**, standard with a minimum climb of 207' per NM to 2500 or 1800-3 for VCOA or alternatively, with standard takeoff minimums and a normal 200' per NM climb gradient, takeoff must occur no later than 1600' prior to DER.

DEPARTURE PROCEDURES: **Rwy 13**, climb on heading 131° to 2900 before turning northeast. **Rwy 31**, climb on heading 311° to 2600 before proceeding on course.

VCOA: **Rwy 31**, obtain ATC approval for VCOA when requesting IFR clearance. Climb in visual conditions to cross Clark County airport at or above 3400 before proceeding on course.

TAKEOFF OBSTACLE NOTES: **Rwy 13**, fence 4' from DER, 346' right of centerline, 1791' MSL. Tree 63' from DER, 475' right of centerline, 1796' MSL. Tree 83' from DER, 262' left of centerline, 1797' MSL. Tree 130' from DER, 425' left of centerline, 1800' MSL. Tree 277' from DER, 522' left of centerline, 1807' MSL. Tree 2500' from DER, 1100' left of centerline, 1898' MSL. Trees and pole beginning 2675' from DER, 320' left of centerline, up to 1908' MSL. **Rwy 31**, tree 268' from DER, 560' left of centerline, 1817' MSL. Vehicle on road beginning 416' from DER, 155' left of centerline, up to 1812' MSL. Tree 1407' from DER, 676' right of centerline, 1842' MSL.

**CLOQUET, MN**

CLOQUET CARLTON COUNTY (COQ)

TAKEOFF MINIMUMS AND (OBSTACLE)  
DEPARTURE PROCEDURES

AMDT 2 12208 (FAA)

TAKEOFF OBSTACLE NOTES: **Rwy 7**, trees beginning abeam DER, 264' left of centerline, up to 100' AGL/1369' MSL. Trees beginning 897' from DER, 358' right of centerline, up to 100' AGL/1349' MSL. Vehicles on road beginning abeam DER, 431' right of centerline, 15' AGL/1274' MSL. **Rwy 17**, trees beginning 69' from DER, 372' right of centerline, up to 81' AGL/1340' MSL. **Rwy 25**, tree 542' from DER, 365' left of centerline, 34' AGL/1313' MSL. Trees beginning 1625' from DER, 462' left of centerline, up to 119' AGL/1388' MSL. Trees beginning 153' from DER, 446' right of centerline, up to 93' AGL/1362' MSL. **Rwy 35**, tree 41' from DER, 434' left of centerline, 49' AGL/1318' MSL. Trees beginning 2181' from DER, crossing centerline left to right, up to 87' AGL/1366' MSL.

**COOK, MN**

COOK MUNI (CQM)

TAKEOFF MINIMUMS AND (OBSTACLE)  
DEPARTURE PROCEDURES

AMDT 1 12040 (FAA)

TAKEOFF OBSTACLE NOTES: **Rwy 13**, trees and terrain beginning 17' from DER, left and right of centerline, up to 60' AGL/1379' MSL. Buildings beginning 326' from DER, 561' left of centerline, up to 20' AGL/1349' MSL. **Rwy 31**, trees beginning 134' from DER, 376' left and right of centerline, up to 60' AGL/1389' MSL.

17229

**TAKEOFF MINIMUMS, (OBSTACLE) DEPARTURE PROCEDURES, AND  
DIVERSE VECTOR AREA (RADAR VECTORS)**



**TAKEOFF MINIMUMS, (OBSTACLE) DEPARTURE PROCEDURES, AND  
DIVERSE VECTOR AREA (RADAR VECTORS)**

17229

**COOPERSTOWN, ND**

COOPERSTOWN MUNI (S32)  
TAKEOFF MINIMUMS AND (OBSTACLE)  
DEPARTURE PROCEDURES  
ORIG 10322 (FAA)

TAKEOFF OBSTACLE NOTES: **Rwy 13**, power lines 4085' from DER, 1585' right to 1588' left of centerline, up to 80' AGL/1526' MSL. **Rwy 31**, building 12' from DER, 369' left of centerline, 14' AGL/1443' MSL. Vehicles 312' from DER, 550' left of centerline, 15' AGL/1444' MSL. Vehicles 353' from DER, 585' right of centerline, 15' AGL/1434' MSL.

**CROOKSTON, MN**

CROOKSTON MUNI-KIRKWOOD FIELD  
(CKN)

TAKEOFF MINIMUMS AND (OBSTACLE)  
DEPARTURE PROCEDURES  
AMDT 2 07298 (FAA)

TAKEOFF MINIMUMS: **Rwys 6, 17, 24, 35**, NA-turf runways.

TAKEOFF OBSTACLE NOTES: **Rwy 13**, tree 1998' from DER, 587' left of centerline, 94' AGL/970' MSL. Pole 1127' from DER, 662' left of centerline, 46' AGL/926' MSL.

**CROSBY, ND**

CROSBY MUNI (D50)  
TAKEOFF MINIMUMS AND (OBSTACLE)  
DEPARTURE PROCEDURES  
ORIG 10154 (FAA)

TAKEOFF MINIMUMS: **Rwys 3, 21**, NA-Environmental. TAKEOFF OBSTACLE NOTES: **Rwy 12**, hangars and poles beginning 133' from DER, 263' right of centerline, up to 35' AGL/1983' MSL. Vehicle on road 800' from DER, 200' right of centerline, 22' AGL/1967' MSL. **Rwy 30**, power line, 2100' from DER, on centerline, 60' AGL/2011' MSL.

**DETROIT LAKES, MN**

DETROIT LAKES-WETHING FIELD (DTL)  
TAKEOFF MINIMUMS AND (OBSTACLE)  
DEPARTURE PROCEDURES  
ORIG 05132 (FAA)

TAKEOFF MINIMUMS: **Rwys 17, 35**, NA. TAKEOFF OBSTACLE NOTES: **Rwy 31**, highway 243' from DER, 267' right of centerline, 15' AGL/1404' MSL. Railroad 534' from DER, 298' right of centerline, 23' AGL/1411' MSL.

**DEVILS LAKE, ND**

DEVILS LAKE RGNL (DVL)  
TAKEOFF MINIMUMS AND (OBSTACLE)  
DEPARTURE PROCEDURES  
AMDT 2 13346 (FAA)

DEPARTURE PROCEDURE: **Rwy 3**, Climb heading 038° to 1900 before turning left.

TAKEOFF OBSTACLE NOTES: **Rwy 3**, tree 1523' from DER, 136' right of centerline, 49' AGL/1489' MSL. Tree 1531' from DER, 319' left of centerline, 50' AGL/1490' MSL. Trees beginning 3105' from DER, 544' right of centerline, 71' AGL/1522' MSL. **Rwy 13**, tree 1144' from DER, 716' right of centerline, 37' AGL/1482' MSL. Pole 1601' from DER, 609' right of centerline, 39' AGL/1484' MSL. **Rwy 21**, vehicle on road beginning 335' from DER, 404' right of centerline, up to 15' AGL/1477' MSL. Antenna on pole 552' from DER, 595' left of centerline, 61' AGL/1506' MSL. Trees beginning 613' from DER, 355' left of centerline, up to 47' AGL/1492' MSL. Vehicles on road beginning 674' from DER, left and right of centerline, up to 15' AGL/1483' MSL. Transmission tower 3566' from DER, 441' left of centerline, 123' AGL/1549' MSL.

**DICKINSON, ND**

DICKINSON-THEODORE ROOSEVELT  
RGNL (DIK)

TAKEOFF MINIMUMS AND (OBSTACLE)  
DEPARTURE PROCEDURES  
AMDT 1A 12180 (FAA)

DEPARTURE PROCEDURE: **Rwy 25**, climb heading 250° to 3500 before turning left.

TAKEOFF OBSTACLE NOTES: **Rwy 7**, road 887' from DER, on rwy centerline, 15' AGL/2631' MSL.

**DODGE CENTER, MN**

DODGE CENTER (TOB)  
TAKEOFF MINIMUMS AND (OBSTACLE)  
DEPARTURE PROCEDURES  
ORIG 09015 (FAA)

TAKEOFF MINIMUMS: **Rwy 22**, NA-Environmental. TAKEOFF OBSTACLE NOTES: **Rwy 16**, trees 3945' from DER, 1542' left of centerline, 100' AGL/1409' MSL.

**DULUTH, MN**

DULUTH INTL (DLH)  
TAKEOFF MINIMUMS AND (OBSTACLE)  
DEPARTURE PROCEDURES  
ORIG 06327 (FAA)

TAKEOFF OBSTACLE NOTES: **Rwy 3**, multiple trees beginning 21' from DER, 226' right of centerline, up to 68' AGL/1477' MSL. Multiple trees beginning 246' from DER, 26' left of centerline, up to 64' AGL/1473' MSL. **Rwy 9**, electrical equipment 207' from DER, 408' left of centerline, 6' AGL/1425' MSL. **Rwy 21**, tower 3762' from DER, 410' left of centerline, 92' AGL/1522' MSL. **Rwy 27**, tree 2426' from DER, 1127' right of centerline, 53' AGL/1522' MSL. Bush and multiple trees beginning 347' from DER, 484' left of centerline, up to 44' AGL/1533' MSL.

17 AUG 2017 to 14 SEP 2017

17 AUG 2017 to 14 SEP 2017

17229

**TAKEOFF MINIMUMS, (OBSTACLE) DEPARTURE PROCEDURES, AND  
DIVERSE VECTOR AREA (RADAR VECTORS)**

# TAKEOFF MINIMUMS, (OBSTACLE) DEPARTURE PROCEDURES, AND DIVERSE VECTOR AREA (RADAR VECTORS)

17229

## EAGLE BUTTE, SD

### CHEYENNE EAGLE BUTTE (84D)

TAKEOFF MINIMUMS AND (OBSTACLE)

DEPARTURE PROCEDURES

ORIG-A 16035 (FAA)

TAKEOFF OBSTACLE NOTES: **Rwy 13**, vehicles on road beginning 55' from DER, 77' left of centerline, up to 15' AGL/2463' MSL. Fence beginning 14' from DER, 347' left of centerline, up to 16' AGL/2458' MSL. **Rwy 31**, terrain 26' from DER, 284' left of centerline, 2435' MSL. Fence 21' from DER, 390' right of centerline, 5' AGL/2433' MSL. Vehicles on road beginning 70' from DER, 283' right of centerline, up to 15' AGL/2444' MSL. Fence beginning 122' from DER, 364' left of centerline, up to 9' AGL/2441' MSL.

## EDGELEY, ND

### EDGELEY MUNI (51D)

TAKEOFF MINIMUMS AND (OBSTACLE)

DEPARTURE PROCEDURES

ORIG 16287 (FAA)

TAKEOFF MINIMUMS: **Rwy 9, 27**, NA-Turf strip.

TAKEOFF OBSTACLE NOTES: **Rwy 14**, ground 5' from DER, 11' left of centerline, 1592' MSL. Electric sys 11' from DER, 10' right of centerline, 2' AGL/1594' MSL. Electric sys 11' from DER, 9' left of centerline, 2' AGL/1594' MSL. **Rwy 32**, electric system 8' from DER, 10' left of centerline, 3' AGL/1603' MSL. Fence 47' from DER, 250' left of centerline, 4' AGL/1604' MSL. Pole 759' from DER, 672' right of centerline, 26' AGL/1626' MSL. Tree 1276' from DER, 635' left of centerline, 47' AGL/1652' MSL. Tree 1383' from DER, 823' left of centerline, 51' AGL/1652' MSL. Tree 2075' from DER, 800' left of centerline, 58' AGL/1659' MSL. Tree 2477' from DER, 854' left of centerline, 68' AGL/1669' MSL.

## ELBOW LAKE, MN

### ELBOW LAKE MUNI-PRIDE OF THE PRAIRIE (Y63)

TAKEOFF MINIMUMS AND (OBSTACLE)

DEPARTURE PROCEDURES

ORIG 13290 (FAA)

TAKEOFF OBSTACLE NOTES: **Rwy 14**, trees, sign, and terrain beginning 128' from DER, 73' right of centerline, up to 29' AGL/1229' MSL. Navaid and terrain beginning 28' from DER, 69' left of centerline, up to 10' AGL/1210' MSL. **Rwy 32**, trees beginning 405' from DER, 190' left of centerline, up to 32' AGL/1232' MSL.

## ELLSWORTH AFB (KRCA),

### RAPID CITY, SD

TAKEOFF MINIMUMS AND (OBSTACLE)

DEPARTURE PROCEDURES

AMDT 1 14317

TAKE-OFF OBSTACLES: **Rwy 13**, Terrain 3182' MSL, 1' from DER, 490' left of centerline. Terrain 3182' MSL, inward of DER, 500' left of centerline. Terrain 3182' MSL, 0' from DER, 500' left of centerline. Tree 140' AGL/3289' MSL, 2405' from DER, 1044' left of centerline. B1 tail 34' AGL/3208' MSL, 64' inward of DER, 582' right of centerline. **Rwy 31**, Building 12' AGL/3311' MSL, 1804' from DER, 762' left of centerline.

## ELY, MN

### ELY MUNI (ELO)

TAKEOFF MINIMUMS AND (OBSTACLE)

DEPARTURE PROCEDURES

AMDT 3 12040 (FAA)

TAKEOFF OBSTACLE NOTES: **Rwy 12**, rising terrain and trees beginning 148' from DER, 18' right of centerline, up to 53' AGL/1539' MSL. Trees beginning 181' from DER, 247' left of centerline, up to 81' AGL/1542' MSL. **Rwy 30**, trees beginning 61' from DER, 242' left of centerline, up to 73' AGL/1520' MSL. Trees beginning 665' from DER, 652' right of centerline, up to 100' AGL/1551' MSL. Pole 670' from DER, 529' right of centerline, 49' AGL/1460' MSL.

## EVELETH, MN

### EVELETH-VIRGINIA MUNI (EVM)

TAKEOFF MINIMUMS AND (OBSTACLE)

DEPARTURE PROCEDURES

AMDT 3 13066 (FAA)

TAKEOFF MINIMUMS: **Rwy 32**, 300-1¼ or std. w/ min. climb to 227' per NM to 1800.

DEPARTURE PROCEDURE: **Rwy 27**, northwest departures (270°-050°) climb heading 274° to 2000 before proceeding on course. **Rwy 32**, climb heading 304° to 2400 before proceeding on course.

TAKEOFF OBSTACLE NOTES: **Rwy 9**, trees beginning 1842' from DER, crossing centerline left to right, up to 88' AGL/1455' MSL. Trees and vehicle on road beginning 13' from DER, 188' right of centerline, up to 88' AGL/1433' MSL. **Rwy 14**, vehicle on road beginning 63' from DER, crossing centerline left to right, up to 15' AGL/1385' MSL. Post 23' from DER, 150' right of centerline, 3' AGL/1372' MSL. Trees beginning 56' from DER, 298' right of centerline, up to 14' AGL/1382' MSL. Trees beginning 1863' from DER, 285' left of centerline, up to 72' AGL/1441' MSL. Rising terrain 13' from DER, 458' left of centerline, 1372' MSL. **Rwy 27**, trees and poles beginning 989' from DER, crossing centerline left to right, up to 110' AGL/1502' MSL. Trees and vehicle on road beginning 66' from DER, 285' left of centerline, up to 37' AGL/1416' MSL. **Rwy 32**, trees and vehicle on road beginning 377' from DER, 545' right of centerline, up to 85' AGL/1464' MSL. Aircraft on parking ramp beginning abeam DER, 332' left of centerline, up to 10' AGL/1389' MSL. Trees beginning 813' from DER, crossing centerline left to right, up to 85' AGL/1464' MSL.

## FAIRMONT, MN

### FAIRMONT MUNI (FRM)

TAKEOFF MINIMUMS AND (OBSTACLE)

DEPARTURE PROCEDURES

AMDT 3 09127 (FAA)

TAKEOFF OBSTACLE NOTES: **Rwy 2**, trees beginning 2466' from DER, 1105' right of centerline, up to 100' AGL/1269' MSL. **Rwy 13**, trees 2340' from DER, 1039' left of centerline, 100' AGL/1269' MSL. **Rwy 20**, trees beginning 1640' from DER, 914' right of centerline, up to 100' AGL/1289' MSL. Trees beginning 913' from DER, 449' left of centerline, up to 100' AGL/1299' MSL. **Rwy 31**, trees beginning 954' from DER, 161' left of centerline, up to 100' AGL/1299' MSL. Trees and road beginning 791' from DER, 339' right of centerline, up to 57' AGL/1226' MSL.

17229

# TAKEOFF MINIMUMS, (OBSTACLE) DEPARTURE PROCEDURES, AND DIVERSE VECTOR AREA (RADAR VECTORS)


**TAKEOFF MINIMUMS, (OBSTACLE) DEPARTURE PROCEDURES, AND**

  
**DIVERSE VECTOR AREA (RADAR VECTORS)**

17229

**FARGO, ND****HECTOR INTL (FAR)**

TAKEOFF MINIMUMS AND (OBSTACLE)

DEPARTURE PROCEDURES

AMDT 4A 11349 (FAA)

TAKEOFF MINIMUMS: **Rwys 13,31**, NA.

TAKEOFF OBSTACLE NOTES: **Rwy 9**, tree 1876' from DER 686' left of centerline, 53' AGL/952' MSL. Tree 2620' from DER, 1100' right of centerline, 66' AGL/965' MSL. Road and vehicle beginning 420' from DER, 601' right of centerline, up to 15' AGL/913' MSL. Road and vehicle beginning 543' from DER, 619' left of centerline, up to 15' AGL/912' MSL. Runway end lights beginning 41' from DER, left and right of centerline, up to 3' AGL/901' MSL. Sign 39' from DER, 201' left of centerline, 2' AGL/900' MSL. Multiple light poles beginning 1082' from DER, left and right of centerline, up to 27' AGL/927' MSL. **Rwy 18**, road and vehicle 536' from DER, 19' right of centerline, 15' AGL/914' MSL. **Rwy 27**, road and vehicle beginning 451' from DER, 479' right of centerline, up to 15' AGL/910' MSL. Tree 2912' from DER, 944' left of centerline, 72' AGL/971' MSL. Runway end lights 42' from DER, 126' right of centerline, 2' AGL/898' MSL. **Rwy 36**, light support structure 11' from DER, 55' right of centerline, 1' AGL/901' MSL.

**FARIBAULT, MN****FARIBAULT MUNI (FBL)**

TAKEOFF MINIMUMS AND (OBSTACLE)

DEPARTURE PROCEDURES

ORIG 10266 (FAA)

TAKEOFF OBSTACLE NOTES: **Rwy 12**, numerous trees beginning 73' from DER, 51' right and left of centerline, up to 100' AGL/1169' MSL. **Rwy 30**, numerous trees beginning 24' from DER, 266' right and left of centerline, up to 100' AGL/1189' MSL.

**FERGUS FALLS, MN****FERGUS FALLS MUNI-EINAR****MICKELSON FIELD (FFM)**

TAKEOFF MINIMUMS AND (OBSTACLE)

DEPARTURE PROCEDURES

ORIG 09239 (FAA)

TAKEOFF OBSTACLE NOTES: **Rwy 13**, trees beginning 2612' from DER, 128' right of centerline, up to 100' AGL/1269' MSL. Trees beginning 2514' from DER, 42' left of centerline, up to 100' AGL/1259' MSL. **Rwy 17**, trees beginning 1100' from DER 663' right of centerline, up to 100' AGL/1269' MSL. Road 222' from DER, 469' right of centerline, 15' AGL/1173' MSL. **Rwy 35**, trees beginning 2156' from DER, 176' right of centerline, up to 100' AGL/1289' MSL.

**FOSSTON, MN****FOSSTON MUNI (FSE)**

TAKEOFF MINIMUMS AND (OBSTACLE)

DEPARTURE PROCEDURES

AMDT 2 12124 (FAA)

TAKEOFF OBSTACLE NOTES: **Rwy 16**, road 17' from DER, 114' left of centerline, 10' AGL/1289' MSL. Road 27' from DER, 127' left of centerline, 10' AGL/1289' MSL. **Rwy 34**, multiple trees and REIL beginning 39' from DER, 78' left of centerline, up to 56' AGL/1329' MSL. Tree 192' from DER, 537' right of centerline, 13' AGL/1273' MSL.

**GARRISON, ND****GARRISON MUNI (D05)**

TAKEOFF MINIMUMS AND (OBSTACLE)

DEPARTURE PROCEDURES

ORIG 11013 (FAA)

TAKEOFF MINIMUMS: **Rwys 3,21**, NA - Environmental. TAKEOFF OBSTACLE NOTES: **Rwy 13**, trees 849' from DER, 190' left of centerline, up to 100' AGL/1989' MSL. Grain silos 1588' from DER, 895' left of centerline, 100' AGL/1989' MSL. **Rwy 31**, vehicles on roadway beginning 424' from DER, left and right of centerline, up to 15' AGL/1974' MSL. Trees 538' from DER, 425' left of centerline, up to 100' AGL/2059' MSL.

**GETTYSBURG, SD****GETTYSBURG MUNI (0D8)**

TAKEOFF MINIMUMS AND (OBSTACLE)

DEPARTURE PROCEDURES

AMDT 1 07018 (FAA)

TAKEOFF OBSTACLE NOTES: **Rwy 4**, multiple trees beginning 1011' from DER, 420' left of centerline, up to 60' AGL/2119' MSL. **Rwy 13**, multiple trees beginning 1897' from DER, 975' left of centerline, 60' AGL/2119' MSL. **Rwy 22**, multiple trees beginning 679' from DER, 117' left of centerline, up to 60' AGL/2109' MSL.

**GLENCOE, MN****GLENCOE MUNI (GYL)**

TAKEOFF MINIMUMS AND (OBSTACLE)

DEPARTURE PROCEDURES

ORIG 09071 (FAA)

TAKEOFF OBSTACLE NOTES: **Rwy 13**, trees beginning 349' from DER, 257' right of centerline, up to 100' AGL/1099' MSL. Trees beginning 1211' from DER, 314' left of centerline, up to 100' AGL/1109' MSL. Terrain beginning 53' from DER, 166' left of centerline, up to 998' MSL. Terrain beginning 286' from DER, 435' right of centerline, up to 1001' MSL. **Rwy 31**, trees beginning 501' from DER, 530' right of centerline, up to 100' AGL/1099' MSL. Tree 2577' from DER, 129' left of centerline, 100' AGL/1109' MSL.

17 AUG 2017 to 14 SEP 2017

17 AUG 2017 to 14 SEP 2017

17229


**TAKEOFF MINIMUMS, (OBSTACLE) DEPARTURE PROCEDURES, AND**

  
**DIVERSE VECTOR AREA (RADAR VECTORS)**

# TAKEOFF MINIMUMS, (OBSTACLE) DEPARTURE PROCEDURES, AND DIVERSE VECTOR AREA (RADAR VECTORS)

17229

## GLENWOOD, MN

GLENWOOD MUNI (GHW)  
TAKEOFF MINIMUMS AND (OBSTACLE)  
DEPARTURE PROCEDURES  
AMDT 3 10233 (FAA)  
TAKEOFF MINIMUMS: **Rwys 5, 23** N/A Environmental.  
TAKEOFF OBSTACLE NOTES: **Rwy 15**, road beginning 278' from DER, 521' left of centerline, 15' AGL/1414' MSL. Trees beginning 3257' from DER, 1239' right of centerline, up to 100' AGL/1489' MSL. Terrain beginning 42' from DER, 448' left of centerline, 1378' MSL. **Rwy 33**, trees beginning 1266' from DER, 174' left of centerline, up to 100' AGL/1499' MSL. Power lines beginning 1259' from DER, 793' left of centerline, up to 50' AGL/1439' MSL.

## GRAFTON, ND

HUTSON FIELD (GAF)  
TAKEOFF MINIMUMS AND (OBSTACLE)  
DEPARTURE PROCEDURES  
AMDT 1 10210 (FAA)  
TAKEOFF MINIMUMS: **Rwys 8, 26**, NA-Environmental.  
TAKEOFF OBSTACLE NOTES: **Rwy 17**, vehicle on roads beginning 23' from DER, 300' left of centerline, up to 15' AGL/837' MSL. Tree 2612' from DER, 857' left of centerline, 100' AGL/929' MSL. **Rwy 35**, building 107' from DER, 344' left of centerline, 17' AGL/836' MSL. Electrical system 153' from DER, 398' left of centerline, 21' AGL/840' MSL. Vehicle on roads beginning 260' from DER, 74' left of centerline, up to 15' AGL/841' MSL. Obstruction light on airport beacon 471' from DER, 601' left of centerline, 54' AGL/873' MSL.

## GRAND FORKS, ND

GRAND FORKS INTL (GFK)  
TAKEOFF MINIMUMS AND (OBSTACLE)  
DEPARTURE PROCEDURES  
AMDT 2 09071 (FAA)  
TAKEOFF OBSTACLE NOTES: **Rwy 9L**, tree 127' from DER, 451' left of centerline, 12' AGL/853' MSL. **Rwy 27R**, bush 38' from DER, 474' right of centerline, 5' AGL/844' MSL. **Rwy 35L**, obstruction light on DME 645' from DER, 198' left of centerline, 21' AGL/860' MSL. **Rwy 35R**, tree 1259' from DER, 521' right of centerline, 41' AGL/880' MSL. Tree 1655' from DER, 271' left of centerline, 45' AGL/884' MSL.

## GRAND MARAIS, MN

GRAND MARAIS/COOK COUNTY (CKC)  
TAKEOFF MINIMUMS AND (OBSTACLE)  
DEPARTURE PROCEDURES  
AMDT 1 17061 (FAA)  
TAKEOFF OBSTACLE NOTES: **Rwy 10**, runway lights beginning 9' from DER, 16' right of centerline, up to 2' AGL/1796' MSL. Trees, REIL, runway lights, and terrain beginning 39' from DER, 77' right of centerline, up to 1818' MSL. REIL 40' from DER, 76' left of centerline, 3' AGL/1797' MSL. Trees beginning 147' from DER, 35' left of centerline, up to 1819' MSL. Trees beginning 536' from DER, 249' right of centerline, up to 1820' MSL. Trees beginning 739' from DER, 82' right of centerline, up to 1835' MSL. **Rwy 28**, tree and terrain beginning 8' from DER, 202' left of centerline, up to 1838' MSL. Tree and terrain beginning 43' from DER, 58' right of centerline, up to 1824' MSL. Tree and terrain beginning 177' from DER, 41' right of centerline, up to 38' AGL/1837' MSL. Trees beginning 359' from DER, 201' left of centerline, up to 1849' MSL. Trees beginning 388' from DER, 223' right of centerline, up to 1847' MSL. Trees beginning 552' from DER, 222' right of centerline, up to 1856' MSL. Trees beginning 844' from DER, 236' right of centerline, up to 1865' MSL. Trees and terrain beginning 1061' from DER, 320' right of centerline, up to 1867' MSL. Trees beginning 1355' from DER, 536' right of centerline, up to 20' AGL/1880' MSL. Trees beginning 1540' from DER, 123' right of centerline, up to 1896' MSL. Trees beginning 1542' from DER, 5' left of centerline, up to 1867' MSL. Trees beginning 2953' from DER, 92' right of centerline, up to 1900' MSL. Trees beginning 3035' from DER, 32' left of centerline, up to 1890' MSL. Trees beginning 4461' from DER, 344' right of centerline, up to 1924' MSL.

## GRAND RAPIDS, MN

GRAND RAPIDS/ITASCA COUNTY-GORDON NEWSTROM FIELD (GPZ)  
TAKEOFF MINIMUMS AND (OBSTACLE)  
DEPARTURE PROCEDURES  
AMDT 4 09127 (FAA)  
TAKEOFF MINIMUMS: **Rwys 5, 10, 23, 28**, NA-Environmental.  
TAKEOFF OBSTACLE NOTES: **Rwy 16**, tree 1655' from DER, 899' left of centerline, 51' AGL/1410' MSL. Tree 3236' from DER, 1130' right of centerline, 82' AGL/1441' MSL. **Rwy 34**, tree 3416' from DER, 1253' right of centerline, 100' AGL/1399' MSL.

## GRANITE FALLS, MN

GRANITE FALLS MUNI/LENZEN-ROE FAGEN MEMORIAL FIELD (GDB)  
TAKEOFF MINIMUMS AND (OBSTACLE)  
DEPARTURE PROCEDURES  
ORIG 10126 (FAA)  
TAKEOFF OBSTACLE NOTES: **Rwy 15**, trees beginning 1780' from DER, 94' left of centerline, up to 100' AGL/1149' MSL. **Rwy 33**, trees beginning 1196' from DER, right and left of centerline, up to 100' AGL/1149' MSL. Power line 1242' from DER, 762' left of centerline, 80' AGL/1129' MSL. Train 1390' from DER, 149' left of centerline, 23' AGL/1162' MSL. Vehicle on road 1389' from DER, 156' left of centerline, up to 15' AGL/1154' MSL.

17229

# TAKEOFF MINIMUMS, (OBSTACLE) DEPARTURE PROCEDURES, AND DIVERSE VECTOR AREA (RADAR VECTORS)



## TAKEOFF MINIMUMS, (OBSTACLE) DEPARTURE PROCEDURES, AND



17229

## DIVERSE VECTOR AREA (RADAR VECTORS)

## GREGORY, SD

GREGORY MUNI-FLYNN FIELD (9D1)

TAKEOFF MINIMUMS AND (OBSTACLE)

DEPARTURE PROCEDURES

ORIG-A 10182 (FAA)

TAKEOFF MINIMUMS: **Rwy 31**, 400-2¼ or std. with a min. climb of 228' per NM to 2600.TAKEOFF OBSTACLE NOTES: **Rwy 31**, tower 11377' from DER, 816' right of centerline, 210' AGL/2491' MSL.

## GWINNER, ND

GWINNER-ROGER MELROE FIELD

(GWR)

TAKEOFF MINIMUMS AND (OBSTACLE)

DEPARTURE PROCEDURES

AMDT1 14261 (FAA)

TAKEOFF MINIMUMS: **Rwys 6, 24**, NA-Environment.DEPARTURE PROCEDURE: **Rwy 34**, climbing right turn heading 010° to 2000 before proceeding on course.TAKEOFF OBSTACLE NOTES: **Rwy 34**, tree 84' from DER, 469' right of centerline, 43' AGL/1293' MSL. Pole 523' from DER, 626' right of centerline, 47' AGL/1296' MSL.

## HALLOCK, MN

HALLOCK MUNI (HCO)

TAKEOFF MINIMUMS AND (OBSTACLE)

DEPARTURE PROCEDURES

ORIG 11125 (FAA)

TAKEOFF OBSTACLE NOTES: **Rwy 13**, tree 1076' from DER, 620' right of centerline, 100' AGL/919' MSL. Trees beginning 81' from DER, from 472' left of centerline, up to 100' AGL/919' MSL. **Rwy 31**, tree 1668' from DER, 560' right of centerline, 100' AGL/919' MSL.

## HARVEY, ND

HARVEY MUNI (5H4)

TAKEOFF MINIMUMS AND (OBSTACLE)

DEPARTURE PROCEDURES

ORIG 10266 (FAA)

TAKEOFF OBSTACLE NOTES: **Rwy 11**, vehicle on road beginning 50' from DER, 318' left of centerline, up to 15' AGL/1654' MSL. Tree 300' from DER, 329' right of centerline, 20' AGL/1621' MSL. Tree 350' from DER, 444' right of centerline, 20' AGL/1619' MSL. **Rwy 29**, vehicle on road beginning 4' from DER, left and right of centerline, up to 15' AGL/1654' MSL. Rising terrain beginning 7' from DER, 31' left of centerline, up to 1608' MSL.

## HAWLEY, MN

HAWLEY MUNI (04Y)

TAKEOFF MINIMUMS AND (OBSTACLE)

DEPARTURE PROCEDURES

ORIG 07074 (FAA)

TAKEOFF OBSTACLE NOTES: **Rwy 34**, road 15' from DER, 421' left of centerline, 15' AGL/1224' MSL.

## HAZEN, ND

MERCER COUNTY RGNL (HZE)

TAKEOFF MINIMUMS AND (OBSTACLE)

DEPARTURE PROCEDURES

ORIG 10210 (FAA)

TAKEOFF MINIMUMS: **Rwy 32**, std. w/ min. climb of 215' per NM to 2700, or 900-3 for climb in visual conditions.DEPARTURE PROCEDURE: **Rwy 32**, for climb in visual conditions: cross Mercer County Rgnl airport at or above 2600 MSL before proceeding on course.TAKEOFF OBSTACLE NOTES: **Rwy 14**, numerous fences beginning 196' from DER, 108' left of centerline, up to 12' AGL/1843' MSL. Terrain beginning 501' from DER, 271' left of centerline, up to 1837' MSL. **Rwy 32**, tree 1291' from DER, 592' right of centerline, 25' AGL/1833' MSL. Terrain 495' from DER, 360' left of centerline, 1803' MSL. Fence 5' from DER, 298' left of centerline, 8' AGL/1790' MSL. Tree 1444' from DER, 520' right of centerline, 25' AGL/1823' MSL.

## HETTINGER, ND

HETTINGER MUNI (HEI)

TAKEOFF MINIMUMS AND (OBSTACLE)

DEPARTURE PROCEDURES

AMDT 2 10154 (FAA)

TAKEOFF MINIMUMS: **Rwy 12**, 300-1 or std. with a min. climb of 324' per NM to 3000. **Rwys 17, 35**, NA-Environmental.TAKEOFF OBSTACLE NOTES: **Rwy 30**, road plus vehicles beginning 63' from DER, crossing left to right, 15' AGL/2744' MSL. Trees beginning 4306' from DER, 17' right of centerline, 100' AGL/2819' MSL.

## HIBBING, MN

RANGE RGNL (HIB)

TAKEOFF MINIMUMS AND (OBSTACLE)

DEPARTURE PROCEDURES

AMDT 6 04218 (FAA)

DEPARTURE PROCEDURE: **Rwy 22**, climb via heading 227° to 2200 before turning right. **Rwy 31**, climb via heading 310° to 2200 before turning left.TAKEOFF OBSTACLE NOTES: **Rwy 4**, antenna on pole, 361' from DER, 409' right of centerline, 1377' MSL. **Rwy 13**, obstacle light on pole, 1184' from DER, 636' left of centerline. Numerous trees beginning 1291' from DER, 745' left of centerline up to 1419' MSL. Trees 1497' from DER, 563' right of centerline, 1388' MSL. **Rwy 22**, multiple trees beginning 368' from DER, 170' right of centerline, up to 1416' MSL. Multiple trees beginning 413' from DER, 117' left of centerline, up to 1400' MSL. **Rwy 31**, light standard, 865' from DER, 595' right of centerline, 1381' MSL.

17 AUG 2017 to 14 SEP 2017

17 AUG 2017 to 14 SEP 2017

17229



## TAKEOFF MINIMUMS, (OBSTACLE) DEPARTURE PROCEDURES, AND



## DIVERSE VECTOR AREA (RADAR VECTORS)



# TAKEOFF MINIMUMS, (OBSTACLE) DEPARTURE PROCEDURES, AND DIVERSE VECTOR AREA (RADAR VECTORS)



## HIGHMORE, SD

### HIGHMORE MUNI (9D0)

TAKEOFF MINIMUMS AND (OBSTACLE)  
DEPARTURE PROCEDURES  
ORIG 16259 (FAA)

TAKEOFF OBSTACLE NOTES: **Rwy 13**, tank 245' from DER, 564' left of centerline, 44' AGL/1890' MSL. Tank 9' from DER, 492' left of centerline, 30' AGL/1877' MSL. Building 169' from DER, 449' left of centerline, 23' AGL/1871' MSL. Vehicles on road beginning 70' from DER, 397' left of centerline, 15' AGL/1865' MSL. Ground beginning 7' from DER, 413' right of centerline, 0' AGL/1856' MSL. NAVAIID 10' from DER, 11' right of centerline, 3' AGL/1855' MSL. **Rwy 31**, fence beginning 83' from DER, 453' left of centerline, up to 12' AGL/1852' MSL. Fence beginning 129' from DER, 449' right of centerline, up to 12' AGL/1851' MSL. Trees beginning 1079' from DER, 397' left of centerline, up to 50' AGL/1898' MSL. Vertical structure 25' from DER, 450' right of centerline, up to 33' AGL/1845' MSL. NAVAIID 9' from DER, 8' right of centerline, 2' AGL/1843' MSL. Vertical structure 201' from DER, 439' left of centerline, 32' AGL/1847' MSL.

## HILLSBORO, ND

### HILLSBORO MUNI (3H4)

TAKEOFF MINIMUMS AND (OBSTACLE)  
DEPARTURE PROCEDURES  
AMDT 1 15008 (FAA)

DEPARTURE PROCEDURE: **Rwy 16**, climb heading 166° to 1700 before turning right. **Rwy 34**, climb heading 346° to 2000 before turning left.

TAKEOFF OBSTACLE NOTES: **Rwy 16**, REILS 11' from DER, 52' right of centerline, 1' AGL/906' MSL. Vehicles on road beginning 9' from DER, 463' right of centerline, up to 17' AGL/922' MSL. Vehicles on road beginning 109' from DER, 326' right of centerline, up to 17' AGL/923' MSL. Vehicles on road beginning 355' from DER, 326' right of centerline, 17' AGL/924' MSL. Vehicles on roads beginning 632' from DER, 61' right of centerline, 17' AGL/925' MSL. **Rwy 34**, post 4' from DER, 140' right of centerline, 5' AGL/908' MSL. NAVAIID 21' from DER, 126' left of centerline, 2' AGL/907' MSL. Vehicles on road beginning 65' from DER, 411' right of centerline, up to 20' AGL/919' MSL.

## HINCKLEY, MN

### FIELD OF DREAMS (04W)

TAKEOFF MINIMUMS AND (OBSTACLE)  
DEPARTURE PROCEDURES  
ORIG 08045 (FAA)

TAKEOFF OBSTACLE NOTES: **Rwy 6**, Tree 82' from DER, 480' right of centerline, 100' AGL/1114' MSL. Tree 143' from DER, 161' left of centerline, 100' AGL/1114' MSL. **Rwy 24**, Tree 48' from DER, 165' left of centerline, 100' AGL/1124' MSL.

## HOT SPRINGS, SD

### HOT SPRINGS MUNI (HSR)

TAKEOFF MINIMUMS AND (OBSTACLE)  
DEPARTURE PROCEDURES  
AMDT 1 12208 (FAA)

TAKEOFF MINIMUMS: **Rwy 6**, 24, NA-environmental.

**Rwy 1**, 400-2½ or std. w/min. climb of 235' per NM to 3700. **Rwy 19**, 400-2¼ or std. w/min. climb of 255' per NM to 3600.

DEPARTURE PROCEDURE: **Rwy 1**, climb heading 026° to 4700 before turning westbound. **Rwy 19**, climb heading 192° to 4700 before turning westbound.

TAKEOFF OBSTACLE NOTES: **Rwy 1**, terrain 55' from DER, 468' right of centerline, 3144' MSL. Vehicle on road beginning 312' from DER, left and right of centerline, up to 15' AGL/3154' MSL. Trees beginning 528' from DER, left and right of centerline, up to 100' AGL/3239' MSL. Trees 2.1 NM from DER, 3246' left of centerline, up to 100' AGL/3519' MSL. **Rwy 19**, vehicle on road beginning 5' from DER, 369' left of centerline, up to 15' AGL/3161' MSL. Vehicle on road beginning 407' from DER, left and right of centerline, up to 15' AGL/3166' MSL. Poles beginning 607' from DER, left and right of centerline, up to 30' AGL/3181' MSL. Multiple trees and poles beginning 1875' from DER, left and right of centerline, up to 100' AGL/3281' MSL. Buildings 3031' from DER, 149' left of centerline, up to 20' AGL/3230' MSL. Fence beginning 3033' from DER, 559' left of centerline, up to 6' AGL/3236' MSL. Rising terrain beginning 3477' from DER, 545' left of centerline, up to 3241' MSL. Trees beginning 1.6 NM from DER, 764' left of centerline, up to 100' AGL/3489' MSL. Power lines beginning 1.4 NM from DER, 166' left of centerline, up to 120' AGL/3440' MSL.

## HURON, SD

### HURON RGNL (HON)

TAKEOFF MINIMUMS AND (OBSTACLE)  
DEPARTURE PROCEDURES  
AMDT 5 09239 (FAA)

TAKEOFF OBSTACLE NOTES: **Rwy 12**, trees and pole beginning 918' from DER, 525' left of centerline, up to 62' AGL/1341' MSL. Trees beginning 291' from DER, 234' right of centerline, up to 100' AGL/1389' MSL. **Rwy 17**, trees beginning 236' from DER, 307' left of centerline, up to 67' AGL/1346' MSL. Trees beginning 264' from DER, 262' right of centerline, 73' AGL/1352' MSL. **Rwy 30**, trees beginning 3428' from DER, 1378' left of centerline, up to 100' AGL/1394' MSL. **Rwy 35**, trees beginning 60' from DER, 104' left of centerline, up to 49' AGL/1328' MSL. Trees beginning 251' from DER, 97' right of centerline, 52' AGL/1331' MSL.

## HUTCHINSON, MN

### HUTCHINSON MUNI-BUTLER FIELD (HCD)

TAKEOFF MINIMUMS AND (OBSTACLE)  
DEPARTURE PROCEDURES  
ORIG 11181 (FAA)

TAKEOFF OBSTACLE NOTES: **Rwy 15**, tree 3342' from DER, 425' right of centerline, 89' AGL/1148' MSL. Trees beginning 545' from DER, 394' left of centerline, up to 64' AGL/1113' MSL. **Rwy 33**, tree 994' from DER, 561' right of centerline, 40' AGL/1 099' MSL.





# TAKEOFF MINIMUMS, (OBSTACLE) DEPARTURE PROCEDURES, AND

## DIVERSE VECTOR AREA (RADAR VECTORS)

17229



### INTERNATIONAL FALLS, MN

FALLS INTL-EINARSON FIELD (INL)

TAKEOFF MINIMUMS AND (OBSTACLE)

DEPARTURE PROCEDURES

AMDT 3A 15008 (FAA)

TAKEOFF OBSTACLE NOTES: **Rwy 4**, Tree 392' from DER 311' left of centerline, 51' AGL/1231' MSL. **Rwy 13**, multiple trees beginning 1999' from DER, 773' left of centerline, up to 63' AGL/1233' MSL. Pole 1091, from DER, 703' right of centerline, 37' AGL/1207' MSL. Road 1005' from DER, 766' left of centerline, 15' AGL/1195' MSL. **Rwy 22**, Multiple trees beginning 433' from DER 273' left of centerline, up to 33' AGL/1213' MSL. Trees 1144' from DER 136' right of centerline, 28' AGL/1208' MSL. **Rwy 31**, Trees 968' from DER, 752' left of centerline, 56' AGL/1236' MSL.

### JACKSON, MN

JACKSON MUNI (MJQ)

TAKEOFF MINIMUMS AND (OBSTACLE)

DEPARTURE PROCEDURES

ORIG 08045 (FAA)

TAKEOFF MINIMUMS: **Rwys 4,22**, NA-TURF.

DEPARTURE PROCEDURE: **Rwy 13**, Climb heading 134° to 1900 before turning right.

TAKEOFF OBSTACLE NOTES: **Rwy 13**, Trees beginning 1474' from DER, 556' left of centerline, up to 80' AGL/1539' MSL. Vehicle on road 258' from DER, 559' from centerline, 15' AGL/1459' MSL. **Rwy 31**, Vehicle on road 465' from DER, 618' left of centerline, 15' AGL/1446' MSL. Trees beginning 1616' from DER, 580' right of centerline, up to 80' AGL/1519' MSL. Trees beginning 1110' from DER, 429' left of centerline, up to 80' AGL/1509' MSL.

### JAMESTOWN, ND

JAMESTOWN RGNL (JMS)

TAKEOFF MINIMUMS AND (OBSTACLE)

DEPARTURE PROCEDURES

AMDT 1 07242 (FAA)

TAKEOFF OBSTACLE NOTES: **Rwy 22**, antenna and tank beginning 2960' from DER, 1007' left of centerline, up to 150' AGL/1631' MSL. **Rwy 31**, multiple trees beginning 2129' from DER 47' right of centerline, up to 60' AGL/1560' MSL.

### KENMARE, ND

KENMARE MUNI (7K5)

TAKEOFF MINIMUMS AND (OBSTACLE)

DEPARTURE PROCEDURES

ORIG 11125 (FAA)

TAKEOFF OBSTACLE NOTES: **Rwy 8**, vehicles on roadway 359' from DER, left and right of centerline, up to 15' AGL/1980' MSL. Trees 374' from DER, 359' right of centerline, 50' AGL/2004' MSL. **Rwy 26**, aircraft on taxiway beginning abeam DER, 385' right of centerline, up to 17' AGL/1981' MSL. Hangars beginning 147' from DER, 506' right of centerline, up to 30' AGL/1994' MSL. Pole 1259' from DER, 49' right of centerline, 40' AGL/2002' MSL. Trees beginning 1342' from DER, 85' right of centerline, up to 50' AGL/2014' MSL.

### KINDRED, ND

ROBERT ODEGAARD FIELD (K74)

TAKEOFF MINIMUMS AND (OBSTACLE)

DEPARTURE PROCEDURES

ORIG-A 15064 (FAA)

TAKEOFF OBSTACLE NOTES: **Rwy 29**, tree 991' from DER, 367' left of centerline, 38' AGL/982' MSL. Tree 1073' from DER, 221' left of centerline, 38' AGL/982' MSL.

### LANGDON, ND

ROBERTSON FIELD (D55)

TAKEOFF MINIMUMS AND (OBSTACLE)

DEPARTURE PROCEDURES

ORIG 10154 (FAA)

TAKEOFF MINIMUMS: **Rwys 8, 26**, NA - Environmental.

TAKEOFF OBSTACLE NOTES: **Rwy 14**, vehicles on road beginning 479' to 684' from DER, from 238' to 413' left of centerline, up to 15' AGL/1627' MSL. **Rwy 32**, windsock 13' from DER, 416' right of centerline, 16' AGL/1619' MSL. Fence 24' from DER, 301' left of centerline, 5' AGL/1608' MSL. Fence 199' from DER, 293' left of centerline, 5' AGL/1608' MSL. Trees beginning 485' from DER 203' right of centerline, up to 30' AGL/1628' MSL. Trees beginning 1912' from DER, from 241' to 418' left of centerline, up to 78' AGL/1677' MSL.

### LAKOTA, ND

LAKOTA MUNI (5L0)

TAKEOFF MINIMUMS AND (OBSTACLE)

DEPARTURE PROCEDURES

ORIG 17173 (FAA)

TAKEOFF OBSTACLE NOTES: **Rwy 15**, tree 129' from DER, 141' right of centerline, 1511' MSL. Tree 849' from DER, 214' left of centerline, 1531' MSL. Tree 877' from DER, 202' left of centerline, 1532' MSL. T-L tower 906' from DER, 439' left of centerline, 27' AGL/1533' MSL. Pole beginning 907' from DER, 430' left of centerline, up to 29' AGL/1534' MSL. Trees beginning 979' from DER, 197' left of centerline, up to 1553' MSL. **Rwy 33**, tree 29' from DER, 290' right of centerline, 1524' MSL. Building 482' from DER, 576' left of centerline, 23' AGL/1531' MSL. Road (N) beginning 587' from DER, 113' right of centerline, up to 1527' MSL. Tree 817' from DER, 536' right of centerline, 1541' MSL. Trees beginning 894' from DER, 173' right of centerline, up to 1554' MSL. Trees beginning 904' from DER, 175' right of centerline, up to 1557' MSL. Trees beginning 937' from DER, 158' right of centerline, up to 1558' MSL. Trees beginning 1004' from DER, 56' right of centerline, up to 1560' MSL. Tree 1063' from DER, 72' left of centerline, 1542' MSL. Trees and pole beginning 1099' from DER, 77' left of centerline, up to 1551' MSL.

17 AUG 2017 to 14 SEP 2017

17 AUG 2017 to 14 SEP 2017

17229



# TAKEOFF MINIMUMS, (OBSTACLE) DEPARTURE PROCEDURES, AND

## DIVERSE VECTOR AREA (RADAR VECTORS)





## TAKEOFF MINIMUMS, (OBSTACLE) DEPARTURE PROCEDURES, AND



17229

## DIVERSE VECTOR AREA (RADAR VECTORS)

**LEMMON, SD**

## LEMMON MUNI (LEM)

TAKEOFF MINIMUMS AND (OBSTACLE)

DEPARTURE PROCEDURES

AMDT 1 13234 (FAA)

TAKEOFF MINIMUMS: **Rwys 7, 25, NA** - Environmental.TAKEOFF OBSTACLE NOTES: **Rwy 11**, rising terrain beginning 43' from DER, 318' right of centerline, up to 2575' MSL. Vehicles on road beginning 861' from DER, 369' left of centerline, up to 15' AGL/2596' MSL. **Rwy 29**, vehicles on road beginning 445' from DER, 231' left of centerline, up to 15' AGL/2583' MSL.**LINTON, ND**

## LINTON MUNI (7L2)

TAKEOFF MINIMUMS AND (OBSTACLE)

DEPARTURE PROCEDURES

ORIG 13234 (FAA)

TAKEOFF OBSTACLE NOTES: **Rwy 9**, trees beginning 902' from DER, 210' right of centerline, up to 100' AGL/1830' MSL. Flag pole 37' from DER, 465' left of centerline, 30' AGL/1810' MSL. Vehicle on road beginning 72' from DER, 237' right of centerline, up to 15' AGL/1815' MSL. **Rwy 27**, trees beginning 14' from DER, 286' left of centerline, up to 100' AGL/1806' MSL.**LISBON, ND**

## LISBON MUNI (6L3)

TAKEOFF MINIMUMS AND (OBSTACLE)

DEPARTURE PROCEDURES

ORIG 17005 (FAA)

TAKEOFF MINIMUMS: **Rwy 3, 21, NA**, Environmental. TAKEOFF OBSTACLE NOTES: **Rwy 14**, terrain beginning 2' from DER, 168' right of centerline, up to 1231' MSL. Pole 51' from DER, 499' left of centerline, 1250' MSL. Vehicle on road beginning 441' from DER, left and right of centerline, up to 1248' MSL. Trees beginning 1136' from DER, 405' right of centerline, up to 1280' MSL. **Rwy 32**, terrain beginning 60' from DER, 297' left of centerline, up to 1234' MSL. Tree 109' from DER, 167' left of centerline, 1238' MSL. Fence beginning 123' from DER, 497' right of centerline, up to 3' AGL/1235' MSL. Fence and tree beginning 270 from DER, 149' right of centerline, up to 1242' MSL.**LITCHFIELD, MN**

## LITCHFIELD MUNI (LJF)

TAKEOFF MINIMUMS AND (OBSTACLE)

DEPARTURE PROCEDURES

AMDT 1 10266 (FAA)

DEPARTURE PROCEDURE: **Rwy 31**, climb heading 316° to 1700 before turning left.TAKEOFF OBSTACLE NOTES: **Rwy 13**, trees beginning 11' from DER, 417' left and right of centerline, up to 90' AGL/1234' MSL. Trees beginning 1251' from DER, 830' left of centerline, up to 89' AGL/1228' MSL. **Rwy 31**, trees beginning 958' from DER, 73' left of centerline, up to 46' AGL/1185' MSL. Trees beginning 13' from DER, 370' right of centerline, up to 95' AGL/1234' MSL.**LITTLE FALLS, MN**

## LITTLE FALLS/MORRISON COUNTY-

## LINDBERGH FIELD (LXL)

TAKEOFF MINIMUMS AND (OBSTACLE)

DEPARTURE PROCEDURES

AMDT 4A 14121 (FAA)

TAKEOFF MINIMUMS: **Rwy 13**, 300-1½ or std. with a min. climb of 301' per NM to 1500. **Rwys 18,36**, NA-Environmental.DEPARTURE PROCEDURE: **Rwy 31**, climb heading 308° to 1600 before turning right.TAKEOFF OBSTACLE NOTES: **Rwy 13**, numerous trees beginning 76' from DER, right and left of centerline, up to 100' AGL/1389' MSL. **Rwy 31**, numerous trees beginning 1986' from DER, right and left of centerline, up to 100' AGL/1214' MSL.**LONG PRAIRIE, MN**

## TODD FIELD (14Y)

TAKEOFF MINIMUMS AND (OBSTACLE)

DEPARTURE PROCEDURES

ORIG 08157 (FAA)

TAKEOFF OBSTACLE NOTES: **Rwy 16**, tree 273' from DER, 310' right of centerline, 100' AGL/1436' MSL. **Rwy 34**, tree 70' from DER, 100' right of centerline, 100' AGL/1439' MSL. Tree 122' from DER, 105' left of centerline, 100' AGL/1436' MSL. Tree 18' from DER, 106' right of centerline, 100' AGL/1433' MSL.**LONGVILLE, MN**

## LONGVILLE MUNI (XVG)

TAKEOFF MINIMUMS AND (OBSTACLE)

DEPARTURE PROCEDURES

ORIG 11349 (FAA)

TAKEOFF MINIMUMS: **Rwy 31**, 300-1½ or std. w/min. climb of 330' per NM to 1600.TAKEOFF OBSTACLE NOTES: **Rwy 13**, trees beginning 237' from DER, 497' right of centerline, up to 100' AGL/1449' MSL. Trees beginning 286' from DER, 533' left of centerline, up to 100' AGL/1429' MSL. Trees beginning 1122' from DER, 4' left of centerline, up to 100' AGL/1429' MSL. **Rwy 31**, vehicles on roadway beginning 58' from DER, 59' left of centerline, up to 17' AGL/1366' MSL. Trees beginning 281' from DER, 559' right of centerline, up to 100' AGL/1519' MSL. Trees beginning 327' from DER, 115' left of centerline, up to 100' AGL/1479' MSL.**LUVERNE, MN**

## QUENTIN AANENSON FIELD (LYV)

TAKEOFF MINIMUMS AND (OBSTACLE)

DEPARTURE PROCEDURES

ORIG 10154 (FAA)

TAKEOFF OBSTACLE NOTES: **Rwy 18**, tree 813' from DER, 578' left of centerline, 50' AGL/1469' MSL. Road plus vehicle 685' from DER, 574' right of centerline, 15' AGL/1454' MSL. Terrain 20' from DER, on centerline, 1429' MSL. **Rwy 36**, transmission tower, 5752' from DER, 1036' right of centerline, 139' AGL/1581' MSL.

17229



## TAKEOFF MINIMUMS, (OBSTACLE) DEPARTURE PROCEDURES, AND



## DIVERSE VECTOR AREA (RADAR VECTORS)



**TAKEOFF MINIMUMS, (OBSTACLE) DEPARTURE PROCEDURES, AND**

17229

**DIVERSE VECTOR AREA (RADAR VECTORS)****MADISON, MN**

LAC QUI PARLE COUNTY (DXX)

TAKEOFF MINIMUMS AND (OBSTACLE)  
DEPARTURE PROCEDURES

ORIG 12320 (FAA)

TAKEOFF MINIMUMS: **Rwys 9, 27**, NA-Environmental.  
**Rwy 32**, 300-1½ or std. w/min. climb of 213' per NM to 1400, or alternatively, with standard takeoff minimums and a normal 200' per NM climb gradient, takeoff must occur no later than 1500' prior to DER.TAKEOFF OBSTACLE NOTES: **Rwy 14**, trees beginning 40' from DER, 463' right of centerline, up to 100' AGL/1081' MSL. Terrain 22' from DER, 175' left of centerline, 1080' MSL. **Rwy 32**, vehicles on roadway beginning 538' from DER, left to right of centerline, up to 15' AGL/1098' MSL. Trees beginning 1485' from DER, 790' left of centerline, up to 100' AGL/1152' MSL. Tower 1.2 NM from DER, 2112' right of centerline, 200' AGL/1277' MSL.**MADISON, SD**

MADISON MUNI (MDS)

TAKEOFF MINIMUMS AND (OBSTACLE)  
DEPARTURE PROCEDURES

ORIG 11181 (FAA)

TAKEOFF MINIMUMS: **Rwys 3, 21**, NA - environmental.  
TAKEOFF OBSTACLE NOTES: **Rwy 15**, trees beginning 764' from DER, 284' left of centerline, up to 76' AGL/1766' MSL. Plant and fence beginning 65' from DER, 384' right of centerline, up to 24' AGL/1733' MSL. **Rwy 33**, road 82' from DER, 399' left of centerline, 23' AGL/1723' MSL. Road and trees beginning 131' from DER, 9' right of centerline, up to 100' AGL/1859' MSL.**MAHNOMEN, MN**

MAHNOMEN COUNTY (3N8)

TAKEOFF MINIMUMS AND (OBSTACLE)  
DEPARTURE PROCEDURES

ORIG 13290 (FAA)

TAKEOFF MINIMUMS: **Rwys 9,27**, NA-Environmental.  
TAKEOFF OBSTACLE NOTES: **Rwy 17**, terrain beginning 14' from DER, 402' right of centerline, up to 1248' MSL. **Rwy 35**, vehicles on roadway, poles, and telephone lines beginning 201' from DER, 450' left of centerline, up to 42' AGL/1273' MSL. Telephone line 972' from DER, 590' right of centerline, 35' AGL/1266' MSL. Trees beginning 1597' from DER 605' left of centerline, 75' AGL/1306' MSL.**MANDAN, ND**

MANDAN MUNI (Y19)

TAKEOFF MINIMUMS AND (OBSTACLE)  
DEPARTURE PROCEDURES

AMDT 1 14149 (FAA)

TAKEOFF MINIMUMS: **Rwys 4, 22**, NA-Environmental.  
TAKEOFF OBSTACLE NOTES: **Rwy 13**, fence and trees beginning 26' from DER, 310' left of centerline, up to 48' AGL/1988' MSL. Transmission lines and pole beginning 1604' from DER, from left to right of centerline, up to 64' AGL/1984' MSL. **Rwy 31**, trees beginning 1256' from DER, from left to right of centerline up to 65' AGL/1995' MSL.**MANKATO, MN**

MANKATO RGNL (MKT)

TAKEOFF MINIMUMS AND (OBSTACLE)  
DEPARTURE PROCEDURES

ORIG 09267 (FAA)

TAKEOFF OBSTACLE NOTES: **Rwy 4**, trees beginning 447' from DER, 408' right of centerline, up to 100' AGL/1078' MSL. Trees beginning 1996' from DER, 17' left of centerline, up to 100' AGL/1084' MSL. **Rwy 15**, trees beginning 1552' from DER, 719' left of centerline, up to 100' AGL/1088' MSL. **Rwy 22**, trees beginning 2370' from DER, 989' right of centerline, up to 100' AGL/1069' MSL. **Rwy 33**, trees beginning 2085' from DER, 780' right of centerline, up to 100' AGL/1077' MSL. Rising terrain 9' from DER, 65' right of centerline, up to 1029' MSL. Terrain beginning 82' from DER, 60' left of centerline, up to 1029' MSL.**MARSHALL, MN**

SOUTHWEST MINNESOTA RGNL

MARSHALL/RYAN FIELD (MML)

TAKEOFF MINIMUMS AND (OBSTACLE)  
DEPARTURE PROCEDURES

AMDT 2A 15344 (FAA)

TAKEOFF MINIMUMS: **Rwy 20**, Std. w/ min. climb of 270' per NM to 2000, or 1000-3 for climb in visual conditions.  
DEPARTURE PROCEDURE: **Rwy 20**, for climb in visual conditions, cross Marshall Airport at or above 2000 MSL before proceeding on course.TAKEOFF OBSTACLE NOTES: **Rwy 2**, runway light 39' from DER, 79' left of centerline, 3' AGL/1174' MSL; trees beginning 1324' from DER, 796' left of centerline, up to 89' AGL/1256' MSL. **Rwy 12**, Pole 706' from DER, 671' right of centerline, 60' AGL/1212' MSL, pole 1580' from DER, 732' left of centerline, 70' AGL/1225' MSL, antenna 1496' from DER, 620' right of centerline, 64' AGL/1219' MSL, pole 1185' from DER, 540' right of centerline, 55' AGL/1210' MSL, tree 3564' from DER, 400' right of centerline, 110' AGL/1269' MSL, tree 2135' from DER, 113' left of centerline, 77' AGL/1232' MSL. **Rwy 20**, runway light 42' from DER, 77' left of centerline, 2' AGL, 1183' MSL; runway light 41' from DER, 78' right of centerline, 2' AGL/1182' MSL. **Rwy 30**, Vehicle on road 1' from DER, 435' left of centerline, 24' AGL/1200' MSL.

17 AUG 2017 to 14 SEP 2017

17 AUG 2017 to 14 SEP 2017

17229

**TAKEOFF MINIMUMS, (OBSTACLE) DEPARTURE PROCEDURES, AND****DIVERSE VECTOR AREA (RADAR VECTORS)**



## TAKEOFF MINIMUMS, (OBSTACLE) DEPARTURE PROCEDURES, AND



17229

## DIVERSE VECTOR AREA (RADAR VECTORS)

**MARTIN, SD**

MARTIN MUNI (9V6)

TAKEOFF MINIMUMS AND (OBSTACLE)

DEPARTURE PROCEDURES

ORIG 16147 (FAA)

TAKEOFF OBSTACLE NOTES: **Rwy 14**, It support structure 9' from DER, 20' left of centerline, 3280' MSL. Lt support structure 10' from DER, 9' right of centerline, 3278' MSL. Ground 13' from DER, 408' left of centerline, 3282' MSL. Ground 27' from DER, 199' left of centerline, 15' AGL/3282' MSL. Fence and ground beginning 74' from DER, 219' left of centerline, up to 3287' MSL. Vehicle on road 145' from DER, 289' right of centerline, 15' AGL/3283' MSL. **Rwy 32**, building, pole, ground and, vehicle on road, beginning 1' from DER, 9' left of centerline, up to 23' AGL/3317 MSL. Tree 1083' from DER, 19' left of centerline, 3322' MSL. Tree 1095' from DER, 387' right of centerline, 3382' MSL. Tree 1172' from DER, 130' left of centerline, 3340' MSL. Tree and pole beginning 1270' from DER, 9' left of centerline, up to 3341' MSL. Tree 1315' from DER, 219' left of centerline, 3343' MSL. Poles and trees beginning 1366' from DER, 174' left of centerline, up to 44' AGL/3349' MSL. Trees beginning 1463' from DER, 94' right of centerline, up to 3334' MSL. Poles and trees beginning 1481' from DER, 406' left of centerline, up to 43' AGL/3350' MSL.

**MC GREGOR, MN**

ISEDOR IVERSON (HZX)

TAKEOFF MINIMUMS AND (OBSTACLE)

DEPARTURE PROCEDURES

ORIG 11349 (FAA)

DEPARTURE PROCEDURE: **Rwy 14**, climb heading 139° to 1900 before turning left.

TAKEOFF OBSTACLE NOTES: **Rwy 14**, trees beginning 72' from DER, 440' left of centerline, up to 100' AGL/1324' MSL. Trees beginning 1158' from DER, 724' right of centerline, up to 100' AGL/1324' MSL. Trees beginning 2888' from DER, 589' left of centerline, up to 100' AGL/1334' MSL. **Rwy 32**, vehicles on roadway beginning 499' from DER, 577' left of centerline, up to 17' AGL/1246' MSL. Trees beginning 2919' from DER, left and right of centerline, up to 100' AGL/1329' MSL.

**MILBANK, SD**

MILBANK MUNI (1D1)

TAKEOFF MINIMUMS AND (OBSTACLE)

DEPARTURE PROCEDURES

ORIG 08101 (FAA)

TAKEOFF MINIMUMS: **Rwy 25**, Std. w/ a min. climb of 207' per NM to 1900, or 900-2½ for climb in visual conditions.

DEPARTURE PROCEDURE: **Rwy 25**, For climb in visual conditions cross Milbank Muni airport at or above 1900 before proceeding on course.

TAKEOFF OBSTACLE NOTES: **Rwy 7**, trees beginning 1207' from DER, 387' left of centerline, up to 100' AGL/ 1219' MSL. Vehicle on road 829' from DER, 373' right of centerline, 15' AGL/ 1134' MSL. Building 322' from DER, 582' right of centerline, 25' AGL/ 1134' MSL. **Rwy 13**, trees beginning 1448' from DER, 394' right of centerline, up to 100' AGL/ 1219' MSL. Vehicle on road 218' from DER, 490' left of centerline, 15' AGL/ 1134' MSL. Building 78' from DER, 397' left of centerline, 25' AGL/ 1134' MSL. **Rwy 25**, tree 3584' from DER, 477' left of centerline, 100' AGL/ 1249' MSL. **Rwy 31**, tree 2992' from DER, 715' left of centerline, 100' AGL/ 1239' MSL.

**MILLER, SD**

MILLER MUNI (MKA)

TAKEOFF MINIMUMS AND (OBSTACLE)

DEPARTURE PROCEDURES

ORIG 08269 (FAA)

TAKEOFF OBSTACLE NOTES: **Rwy 15**, vehicle on road 769' from DER, 642' right of centerline, 15' AGL/1599' MSL. Snow removal equipment 206' from DER, 475' right of centerline, 21' AGL/1594' MSL. Tree 3903' from DER, 998' left of centerline, 100' AGL/1684' MSL. **Rwy 33**, vehicle on road 450' from DER, 560' left of centerline, 15' AGL/1584' MSL. Tree 762' from DER, 628' left of centerline, 100' AGL/1669' MSL.

**MINNEAPOLIS, MN**

AIRLAKE (LVN)

TAKEOFF MINIMUMS AND (OBSTACLE)

DEPARTURE PROCEDURES

ORIG 10154 (FAA)

TAKEOFF OBSTACLE NOTES: **Rwy 12**, ground 198' from DER, 533' right of centerline, 0' AGL/963' MSL. Tree and vehicle on road, beginning 422' from DER, 379' right of centerline, up to 15' AGL/978' MSL. Tree 1291' from DER, 506' left of centerline, 62' AGL/1002' MSL. **Rwy 30**, ground 104' from DER, 479' left of centerline, 0' AGL/965' MSL. Tree, pole, and antenna on building beginning 171' from DER, 259' right of centerline, up to 50' AGL/1000' MSL. Tree, railroad, and antenna on building 486' from DER, 268' left of centerline, up to 41' AGL/1001' MSL. Trees and a building beginning 821' from DER, 30' right of centerline, up to 49' AGL/1009' MSL.

17 AUG 2017 to 14 SEP 2017

17 AUG 2017 to 14 SEP 2017

17229



## TAKEOFF MINIMUMS, (OBSTACLE) DEPARTURE PROCEDURES, AND



## DIVERSE VECTOR AREA (RADAR VECTORS)



## TAKEOFF MINIMUMS, (OBSTACLE) DEPARTURE PROCEDURES, AND



17229

## DIVERSE VECTOR AREA (RADAR VECTORS)

## MINNEAPOLIS, MN (CON'T)

ANOKA COUNTY-BLAINE (JANES FIELD)

(ANE)

TAKEOFF MINIMUMS AND (OBSTACLE)

DEPARTURE PROCEDURES

AMDT 5B 17229 (FAA)

TAKEOFF MINIMUMS: **Rwy 9**, 300-1½ or std. w/ min. climb of 205' per NM to 1200, or alternatively, with standard takeoff minimums and a normal 200' per NM climb gradient, takeoff must occur no later than 1200' prior to DER. **Rwy 18**, 300-1 or std. w/ min. climb of 370' per NM to 1200.

DEPARTURE PROCEDURE: **Rwy 9**, climb heading 089° to 2200 before turning right. **Rwy 18**, climb heading 179° to 2600 before turning left. **Rwy 27**, climb heading 269° to 1700 before proceeding southeast bound. **Rwy 36**, climb heading 359° to 1700 before proceeding southeast bound.

TAKEOFF OBSTACLE NOTES: **Rwy 9**, tree 821' from DER, 618' right of centerline, 961' MSL. Water tank 1.1 NM from DER, 1278' right of centerline, 170' AGL/1082' MSL. **Rwy 18**, road beginning 2' from DER, 49' right of centerline, up to 925' MSL. Trees beginning 405' from DER, 286' left of centerline, up to 946' MSL. Trees beginning 487' from DER, 353' left of centerline, up to 954' MSL. Tree 757' from DER, 385' left of centerline, 955' MSL. Trees beginning 769' from DER, 335' left of centerline, up to 959' MSL. Tower 5016' from DER, 200' left of centerline, 120' AGL/1178' MSL. **Rwy 27**, tree 7' from DER, 270' right of centerline, 908' MSL. Trees beginning 70' from DER, 247' right of centerline, up to 912' MSL. Tree 185' from DER, 390' right of centerline, 926' MSL. Tree 447' from DER, 509' right of centerline, 930' MSL. Tree 684' from DER, 671' left of centerline, 946' MSL. Tree 1189' from DER, 811' left of centerline, 957' MSL. Tree 1296' from DER, 697' right of centerline, 946' MSL. Tree 3028' from DER, 553' right of centerline, 983' MSL. **Rwy 36**, trees beginning 85' from DER, 308' right of centerline, up to 927' MSL. Trees beginning 190' from DER, 267' right of centerline, up to 971' MSL. Trees beginning 1544' from DER, 249' right of centerline, up to 987' MSL. Tree 1985' from DER, 358' left of centerline, 962' MSL.

## MINNEAPOLIS, MN (CON'T)

CRYSTAL (MIC)

TAKEOFF MINIMUMS AND (OBSTACLE)

DEPARTURE PROCEDURES

AMDT 3 11041 (FAA)

TAKEOFF MINIMUMS: **Rwy 6R, 24L, NA** - Environmental.

DEPARTURE PROCEDURE: **Rwy 6L**, Climb heading 051° to 2400 before turning right. **Rwys 14L, 14R** Climb heading 140° to 1900 before turning left.

TAKEOFF OBSTACLE NOTES: **Rwy 6L**, multiple trees beginning 514' from DER, 35' left of centerline, up to 66' AGL/945' MSL. Multiple trees beginning 836' from DER, 18' right of centerline, up to 76' AGL/945' MSL. **Rwy 14L**, multiple trees, sign and pole beginning 46' from DER, 125' left of centerline, up to 61' AGL/940' MSL. Multiple trees beginning 153' from DER, 4' right of centerline, up to 57' AGL/946' MSL. **Rwy 14R**, multiple trees, pole, and sign beginning 51' from DER, 295' left of centerline, up to 61' AGL/940' MSL. Multiple trees beginning 5' from DER, 121' right of centerline, up to 67' AGL/946' MSL. **Rwy 24R**, multiple trees beginning 1179' from DER, 110' left of centerline, up to 60' AGL/939' MSL. Multiple trees, sign and hangar beginning 41' from DER, 132' right of centerline, up to 62' AGL/941' MSL. Vehicles on road 903' from DER, 8' right of centerline, up to 17' AGL/896' MSL. **Rwy 32L**, multiple trees beginning 562' from DER, 70' left of centerline, up to 79' AGL/958' MSL. Multiple trees and sign beginning 70' from DER, 26' right of centerline, up to 81' AGL/960' MSL. Vehicles on road beginning 390' from DER, 11' left of centerline, up to 15' AGL/984' MSL. Power line 272' from DER, 443' left of centerline, 40' AGL/909' MSL. Multiple hangars beginning 88' from DER, 326' left of centerline, up to 20' AGL/889' MSL. **Rwy 32R**, multiple trees beginning 899' from DER, 50' left of centerline, up to 81' AGL/960' MSL. Tree and sign beginning 77' from DER, 149' right of centerline, up to 70' AGL/950' MSL. Vehicles on road beginning 537' from DER, 311' left of centerline, up to 15' AGL/894' MSL. Multiple hangars beginning 355' from DER, 490' right of centerline, up to 30' AGL/899' MSL.

## FLYING CLOUD (FCM)

TAKEOFF MINIMUMS AND (OBSTACLE)

DEPARTURE PROCEDURES

AMDT 6 14037 (FAA)

TAKEOFF OBSTACLE NOTES: **Rwy 10L**, tree, buildings, and poles beginning 78' from DER, 346' left of centerline, up to 45' AGL/945' MSL. Vehicle on road, sign, and trees beginning 645' from DER, 442' right of centerline, up to 37' AGL/937' MSL. **Rwy 10R**, buildings beginning 260' from DER, 321' right of centerline, up to 40' AGL/943' MSL. Trees, poles, and general utility beginning 331' from DER, 106' right of centerline, up to 38' AGL/939' MSL. **Rwy 28R**, tree, buildings, and general utility beginning 105' from DER, 353' right of centerline, up to 38' AGL/938' MSL. **Rwy 18**, buildings beginning 212' from DER, 318' right of centerline, up to 34' AGL/938' MSL. Vehicle on road 262' from DER, 195' left of centerline, 15' AGL/918' MSL. Trees beginning 401' from DER, 165' left of centerline, up to 51' AGL/961' MSL. **Rwy 36**, building 3' from DER, 478' left of centerline, 18' AGL/920' MSL. Trees beginning 426' from DER, 323' right of centerline, up to 61' AGL/951' MSL. Trees, buildings, poles, and windmill beginning 541' from DER, 302' left of centerline, up to 59' AGL/960' MSL.

17 AUG 2017 to 14 SEP 2017

17 AUG 2017 to 14 SEP 2017

17229



## TAKEOFF MINIMUMS, (OBSTACLE) DEPARTURE PROCEDURES, AND



## DIVERSE VECTOR AREA (RADAR VECTORS)

**TAKEOFF MINIMUMS, (OBSTACLE) DEPARTURE PROCEDURES, AND**

17229

**DIVERSE VECTOR AREA (RADAR VECTORS)****MINNEAPOLIS, MN (CON'T)**MINNEAPOLIS-ST. PAUL INTL / WOLD-  
CHAMBERLAIN (MSP)TAKEOFF MINIMUMS AND (OBSTACLE)  
DEPARTURE PROCEDURES

AMDT 12 13122 (FAA)

TAKEOFF MINIMUMS: **Rwy 12L**, 300-1½ or std. w/min. climb of 207' per NM to 1100, or alternatively, with standard takeoff minimums and a normal 200' per NM climb gradient, takeoff must occur no later than 1300' prior to DER. **Rwy 35**, std. w/ min. climb of 219' per NM to 2100.DEPARTURE PROCEDURE: **Rwy 4**, climb heading 045° to 2100 before turning left. **Rwys 30L,30R**, climb heading 301° to 2100 before turning right.**Rwy 35**, climb heading 350° to 2100 before proceeding on courseTAKEOFF OBSTACLE NOTES: **Rwy 4**, trees beginning 800' from DER, 301' left of centerline, up to 75' AGL/925' MSL. Rod on building 2528' from DER, 1174' left of centerline, 78' AGL/922' MSL. Fence beginning 13' from DER, 486' left of centerline, up to 6' AGL/860' MSL. Stack 4535' from DER, 480' left of centerline, 139' AGL/949' MSL. **Rwy 12L**, tree 1.1 NM from DER, 1691' left of centerline, 92' AGL/991' MSL. Light pole and camera on wall beginning 398' from DER, 561' right of centerline, up to 23' AGL/832' MSL. **Rwy 12R**, tree 1479' from DER, 561' left of centerline, 86' AGL/855' MSL. Obstruction light on pole 1002' from DER, 753' left of centerline, 53' AGL/852' MSL. **Rwy 17**, pole 409' from DER, 530' right of centerline, 29' AGL/866' MSL. Building 2619' from DER, 881' left of centerline, 97' AGL/918' MSL. Building 1956' from DER, 904' left of centerline, 61' AGL/866' MSL. Tree 2619' from DER, on centerline, 79' AGL/900' MSL. **Rwy 22**, trees beginning 2659' from DER, 867' right of centerline, 94' AGL/934' MSL. **Rwy 30L**, antenna on tower 3555' from DER, 1334' left of centerline, 116' AGL/935' MSL. **Rwy 30R**, billboard sign 1463' from DER, 848' right of centerline, 31' AGL/880' MSL. **Rwy 35**, trees beginning 2553' from DER, 770' right of centerline, 100' AGL/919' MSL. Trees beginning 1989' from DER, 194' left of centerline, up to 87' AGL/906' MSL. Buildings beginning 5.4 NM from DER, 1781' left of centerline, up to 889' AGL/1743' MSL.**MINOT, ND**

MINOT INTL (MOT)

TAKEOFF MINIMUMS AND (OBSTACLE)

DEPARTURE PROCEDURES

AMDT 3A 11097 (FAA)

TAKEOFF MINIMUMS: **Rwy 26**, 300-1½ or std. with a min. climb of 219' per NM to 2000.DEPARTURE PROCEDURE: **Rwy 13**, climb via heading 128° to 2200 before turning right. **Rwy 26**, climb via heading 260° to 2300 before turning left.TAKEOFF OBSTACLE NOTES: **Rwy 8**, fence 261' from DER, 415' right of centerline, 9' AGL/1669' MSL. **Rwy 26**, poles beginning 952' from DER, 523' left of centerline, up to 42' AGL/1761' MSL. Tower 1297' from DER, 405' right of centerline, 29' AGL/1751' MSL. Sign 1372' from DER, 323' left of centerline, 31' AGL/1750' MSL. Sign 1377' from DER, 832' right of centerline, 59' AGL/1778' MSL. Light pole 1419' from DER, 24' right of centerline, 36' AGL/1752' MSL. Trees beginning 1463' from DER, 73' right of centerline, up to 76' AGL/1795' MSL. Building 1432' from DER, 303' right of centerline, 33' AGL/1753' MSL. Tree 2071' from DER, 60' left of centerline, 53' AGL/1772' MSL. Tank 1.1 NM from DER, 1812' right of centerline, 140' AGL/1900' MSL. **Rwy 31**, trees beginning 2908' from DER, 560' left of centerline, up to 64' AGL/1778' MSL.**MITCHELL, SD**

MITCHELL MUNI (MHE)

TAKEOFF MINIMUMS AND (OBSTACLE)

DEPARTURE PROCEDURES

AMDT 1A 15344 (FAA)

TAKEOFF OBSTACLE NOTES: **Rwy 18**, trees beginning 829' from DER, 505' right of centerline, up to 80' AGL/1386' MSL. NAVAIID 119' from DER, 409' left of centerline, 9' AGL/1308' MSL. **Rwy 36**, trees beginning 552' from DER, 575' right of centerline, up to 80' AGL/1328' MSL. NAVAIIDs beginning 34' from DER, 100' right and left of centerline, up to 3' AGL/1286' MSL.**MOBRIDGE, SD**

MOBRIDGE MUNI(MBG)

TAKEOFF MINIMUMS AND (OBSTACLE)

DEPARTURE PROCEDURES

AMDT 1 11181 (FAA)

TAKEOFF MINIMUMS: **Rwys 17,35,NA** - environmental DEPARTURE PROCEDURE: **Rwy 12**, climb heading 118° to 2600 before turning left.TAKEOFF OBSTACLE NOTES: **Rwy 12**, tower 2587' from DER, 651' right of centerline, 40' AGL/ 1810' MSL. Pole 3567' from DER, 12' right of centerline, 11' AGL/ 1790' MSL. Tree 1495' from DER, 230' right of centerline, 29' AGL/ 1738' MSL. Trees and poles beginning 1698' from DER, 160' left of centerline, up to 75' AGL/ 1811' MSL. Terrain and road beginning 153 from DER, 307' left of centerline, up to 17' AGL/1749' MSL. **Rwy 30**, terrain and road beginning 36' from DER, left to right across centerline, up to 17' AGL/1710' MSL.

17229

**TAKEOFF MINIMUMS, (OBSTACLE) DEPARTURE PROCEDURES, AND****DIVERSE VECTOR AREA (RADAR VECTORS)**

# TAKEOFF MINIMUMS, (OBSTACLE) DEPARTURE PROCEDURES, AND DIVERSE VECTOR AREA (RADAR VECTORS)

17229

**MOHALL, ND****HOHALL MUNI (HBC)**

TAKEOFF MINIMUMS AND (OBSTACLE)  
DEPARTURE PROCEDURES  
ORIG 11293 (FAA)

TAKEOFF OBSTACLE NOTES: **Rwy 13**, vehicles on roadway, 361' from DER, left and right of centerline, up to 15' AGL/1664' MSL.

**MONTEVIDEO, MN****MONTEVIDEO-CHIPPEWA COUNTY (MVE)**

TAKEOFF MINIMUMS AND (OBSTACLE)  
DEPARTURE PROCEDURES  
ORIG-A 15232 (FAA)

TAKEOFF MINIMUMS: **Rwy 3, 21**, NA-Environmental.  
DEPARTURE PROCEDURE: **Rwy 14**, climb runway heading to 1500 before turning.

**MOORHEAD, MN****MOORHEAD MUNI (JKJ)**

TAKEOFF MINIMUMS AND (OBSTACLE)  
DEPARTURE PROCEDURES  
ORIG 11293 (FAA)

TAKEOFF OBSTACLE NOTES: **Rwy 12**, building 263' from DER, 495' left of centerline, 15' AGL/932' MSL. Tree 657' from DER, 449' left of centerline, 114' AGL/1031' MSL. Trees 1463' from DER, 711' left of centerline, up to 69' AGL/986' MSL. Poles beginning 868' from DER, left and right of centerline, up to 48' AGL/965' MSL.

**Rwy 30**, tree 119' from DER, 104' left of centerline, 4' AGL/918' MSL. Poles beginning 1342' from DER, 855' right of centerline, up to 55' AGL/969' MSL.

**MOOSE LAKE, MN****MOOSE LAKE CARLTON COUNTY (MZH)**

TAKEOFF MINIMUMS AND (OBSTACLE)  
DEPARTURE PROCEDURES  
ORIG 94006 (FAA)

TAKEOFF MINIMUMS: **Rwys 4, 22**, 300-1.

**MORA, MN****MORA MUNI (JMR)**

TAKEOFF MINIMUMS AND (OBSTACLE)  
DEPARTURE PROCEDURES  
ORIG 15288 (FAA)

TAKEOFF OBSTACLE NOTES: **Rwy 17**, light pole 16' from DER, 17' right of centerline, 3' AGL/1012' MSL. Terrain 27' from DER, 311' from DER, 1012' MSL. Vehicle on road, building, and trees beginning 162' from DER, 410' right of centerline, up to 33' AGL/1034' MSL. Trees beginning 208' from DER, 443' left of centerline, up to 44' AGL/1045' MSL. Trees beginning 644' from DER, 455' right of centerline, up to 53' AGL/1054' MSL. Trees beginning 864' from DER, 178' right of centerline, up to 76' AGL/1068' MSL. Trees beginning 1055' from DER, 37' left of centerline, up to 62' AGL/1063' MSL. Trees beginning 1619' from DER, 491' right of centerline, up to 72' AGL/1074' MSL. Tree 1975' from DER, 405' left of centerline, 68' AGL/1069' MSL. Tree 2054' from DER, 2' right of centerline, 68' AGL/1069' MSL. Trees beginning 2237' from DER, crossing centerline, up to 88' AGL/1089' MSL. Trees beginning 2645' from DER, 777' right of centerline, up to 89' AGL/1105' MSL. **Rwy 35**, terrain beginning 168' from DER, 290' left of centerline, up to 1018' MSL. Terrain 178' from DER, 383' right of centerline, 1005' MSL. Terrain, vehicle on road, and trees beginning 349' from DER, 387' right of centerline, up to 58' AGL/1059' MSL. Trees beginning 441' from DER, 388' left of centerline, up to 46' AGL/1057' MSL. Trees beginning 634' from DER, 354' left of centerline, up to 70' AGL/1071' MSL. Trees beginning 617' from DER, 427' right of centerline, up to 66' AGL/1067' MSL. Trees beginning 1032' from DER, 267' left of centerline, up to 68' AGL/1086' MSL. Trees beginning 1563' from DER, 582' right of centerline, up to 61' AGL/1072' MSL. Tree 1791' from DER, 964' left of centerline, 66' AGL/1097' MSL. Trees beginning 2085' from DER, crossing centerline, up to 73' AGL/1104' MSL.

**MORRIS, MN****MORRIS MUNI-CHARLIE SCHMIDT FLD (MOX)**

TAKEOFF MINIMUMS AND (OBSTACLE)  
DEPARTURE PROCEDURES  
ORIG 08045 (FAA)

TAKEOFF MINIMUMS: **Rwys 4, 22**, NA-Environmental.  
TAKEOFF OBSTACLE NOTES: **Rwy 32**, Trees 2888' from DER, 1125' left of centerline, 100' AGL/1209' MSL.

**NEW ULM, MN****NEW ULM MUNI (ULM)**

TAKEOFF MINIMUMS AND (OBSTACLE)  
DEPARTURE PROCEDURES  
ORIG-A 15260 (FAA)

TAKEOFF MINIMUMS: **Rwy 4, 22**, NA-Environmental.  
TAKEOFF OBSTACLE NOTES: **Rwy 33**, tree 628' from DER, 417' right of centerline, 33' AGL/1034' MSL. Tree 1457' from DER, 650' left of centerline, 38' AGL/1047' MSL. Ground 4' from DER, 154' left of centerline, 1007' MSL. **Rwy 15**, tree 1935' from DER, 610' left of centerline, 100' AGL/1099' MSL.

17229

# TAKEOFF MINIMUMS, (OBSTACLE) DEPARTURE PROCEDURES, AND DIVERSE VECTOR AREA (RADAR VECTORS)

**TAKEOFF MINIMUMS, (OBSTACLE) DEPARTURE PROCEDURES, AND**

17229

**DIVERSE VECTOR AREA (RADAR VECTORS)****NORTHWOOD, ND**

NORTHWOOD MUNI-VINCE FIELD (4V4)

TAKEOFF MINIMUMS AND (OBSTACLE)

DEPARTURE PROCEDURES

ORIG 12040 (FAA)

TAKEOFF OBSTACLE NOTES: **Rwy 8**, trees beginning 3317' from DER, 737' left of centerline, up to 100' AGL/1214' MSL. **Rwy 26**, trees beginning 1171' from DER, left and right of centerline, up to 100' AGL/1214' MSL.

**OAKES, ND**

OAKES MUNI (2D5)

TAKEOFF MINIMUMS AND (OBSTACLE)

DEPARTURE PROCEDURES

AMDT 1 11125 (FAA)

TAKEOFF OBSTACLE NOTES: **Rwy 12**, trees beginning 2071' from DER, left and right of centerline, up to 100' AGL/1459' MSL. **Rwy 30**, trees beginning 2509' from DER, 744' left of centerline, up to 100' AGL/1454' MSL.

**OLIVIA, MN**

OLIVIA RGNL (OVL)

TAKEOFF MINIMUMS AND (OBSTACLE)

DEPARTURE PROCEDURES

AMDT 1 86044 (FAA)

TAKEOFF MINIMUMS: **Rwy 11**, 300-1.**ORR, MN**

ORR RGNL (ORB)

TAKEOFF MINIMUMS AND (OBSTACLE)

DEPARTURE PROCEDURES

AMDT 2 12152 (FAA)

TAKEOFF MINIMUMS: **Rwy 13**, 300-1½ or std. w/ min. climb of 260' per NM to 1600.  
DEPARTURE PROCEDURE: **Rwy 13**, climb heading 136° to 1900 before turning right.

TAKEOFF OBSTACLE NOTES: **Rwy 13**, trees beginning 630' from DER, 476' right of centerline, up to 80' AGL/1389' MSL. Trees beginning 759' from DER, 361' left of centerline, up to 80' AGL/1459' MSL. Trees beginning 1.1 NM from DER, 1343' right of centerline, up to 80' AGL/1499' MSL. **Rwy 31**, trees beginning 366' from DER, 162' left of centerline, up to 80' AGL/429' MSL. Trees beginning 867' from DER, 719' right of centerline, up to 80' AGL/1429' MSL. Trees beginning 5401' from DER, 148' right of centerline, up to 80' AGL/1449' MSL.

**ORTONVILLE, MN**

ORTONVILLE MUNI-MARTINSON FIELD

(V/V)

TAKEOFF MINIMUMS AND (OBSTACLE)

DEPARTURE PROCEDURES

ORIG 81274 (FAA)

TAKEOFF MINIMUMS: **Rwy 16**, 300-1 or std. with a min. climb of 210' per NM to 1300.

**OWATONNA, MN**

OWATONNA DEGNER RGNL (OWA)

TAKEOFF MINIMUMS AND (OBSTACLE)

DEPARTURE PROCEDURES

AMDT 2 97030 (FAA)

DEPARTURE PROCEDURE: **Rwy 12**, climb runway heading to 1500 before turning on course.

**PARK RAPIDS, MN**

PARK RAPIDS MUNI-KONSKHOK FIELD (PKD)

TAKEOFF MINIMUMS AND (OBSTACLE)

DEPARTURE PROCEDURES

AMDT 1 16175 (FAA)

DEPARTURE PROCEDURE: **Rwy 36**, climb heading 356° to 2000 before turning right.

TAKEOFF OBSTACLE NOTES: **Rwy 13**: Pole 880' from DER, 711' left of centerline, 26' AGL/1467' MSL. **Rwy 18**: Trees beginning 1371' from DER, left and right of centerline, up to 1549' MSL. Trees beginning 3080' from DER, left and right of centerline, up to 1539' MSL. **Rwy 31**: Vehicles on road beginning 66' from DER, right and left of centerline, up to 1462' MSL. Trees beginning 359' from DER, 454' right of centerline, up to 1468' MSL. Trees beginning 799' from DER, 236' left of centerline, up to 1479' MSL. Trees beginning 854' from DER, 296' right of centerline, up to 1476' MSL. **Rwy 36**: Trees and buildings beginning 575' from DER, left and right of centerline, up to 1549' MSL. Trees beginning 2802' from DER, 95' right of centerline, up to 1559' MSL.

**PARKSTON, SD**

PARKSTON MUNI (8V3)

TAKEOFF MINIMUMS AND (OBSTACLE)

DEPARTURE PROCEDURES

ORIG 13290 (FAA)

TAKEOFF OBSTACLE NOTES: **Rwy 15**, poles beginning 628' from DER, left and right of centerline, up to 37' AGL/1452' MSL. Transmission towers beginning 758' from DER, left and right of centerline, up to 29' AGL/1444' MSL. Train on railroad, 777' from DER, 573' left of centerline, 24' AGL/1439' MSL. Building 1189' from DER, 694' left of centerline, 35' AGL/1450' MSL. Trees beginning 1227' from DER, 268' left of centerline, up to 36' AGL/1459' MSL. **Rwy 33**, trees beginning 300' from DER, left and right of centerline, up to 63' AGL/1478' MSL. Poles beginning 662' from DER, left and right of centerline, up to 48' AGL/1463' MSL. Transmission towers beginning 896' from DER, left and right of centerline, up to 44' AGL/1459' MSL. Lighted support structures beginning 1076' from DER, left and right of centerline, up to 48' AGL/1463' MSL. Fences beginning 17' from DER, left and right of centerline, up to 6' AGL/1421' MSL. Silo, 1677' from DER, 43' AGL/1458' MSL. Vehicle on road, 54' from DER, 14' AGL/1459' MSL.

17 AUG 2017 to 14 SEP 2017

17 AUG 2017 to 14 SEP 2017

17229

**TAKEOFF MINIMUMS, (OBSTACLE) DEPARTURE PROCEDURES, AND****DIVERSE VECTOR AREA (RADAR VECTORS)**

**TAKEOFF MINIMUMS, (OBSTACLE) DEPARTURE PROCEDURES, AND**

17229

**DIVERSE VECTOR AREA (RADAR VECTORS)****PAYNESVILLE, MN**

PAYNESVILLE MUNI (PEX)  
TAKEOFF MINIMUMS AND (OBSTACLE)  
DEPARTURE PROCEDURES  
ORIG 11013 (FAA)

TAKEOFF MINIMUMS: **Rwy 11**, 300-2 or std. w/min climb of 239' per NM to 1800. NA at night. **Rwy 29**, 300-1¼ or std. w/min climb of 210' per NM to 1500. NA at night.

TAKEOFF OBSTACLE NOTES: **Rwy 11**, trees 3507' from DER, 1179' right of centerline, 60' AGL/1329' MSL. Antenna 1.6 NM from DER, 1705' left of centerline, 200' AGL/1470' MSL. Vehicle on road beginning 2216' from DER, left and right of centerline, 15' AGL/1244' MSL. Terrain 51' from DER, left and right of centerline 1188' MSL. **Rwy 29**, trees 1328' from DER, 533' right of centerline, 60' AGL/1249' MSL. Trees 2062' from DER, 940' right of centerline, 60' AGL/1249' MSL. Buildings 619' from DER, 601' right of centerline, 20' AGL/1209' MSL. Power lines 1.3 NM from DER, 2625' left of centerline, 200' AGL/1399' MSL.

**PEMBINA, ND**

PEMBINA MUNI (PMB)  
TAKEOFF MINIMUMS AND (OBSTACLE)  
DEPARTURE PROCEDURES  
ORIG 85325 (FAA)  
DEPARTURE PROCEDURE: **Rwy 33**, climb runway heading 3200 before turning left.

**PERHAM, MN**

PERHAM MUNI (16D)  
TAKEOFF MINIMUMS AND (OBSTACLE)  
DEPARTURE PROCEDURES  
AMDT 1 13234 (FAA)  
DEPARTURE PROCEDURE: **Rwy 13**, climb heading 128° to 1900 before turning left.  
TAKEOFF OBSTACLE NOTES: **Rwy 13**, REILS 8' from DER, 79' right of centerline, 2' AGL/1373' MSL. Trees beginning 6' from DER, 350' right of centerline, up to 50' AGL/1386' MSL and trees beginning 138' from DER, 115' right of centerline, up to 50' AGL/1433' MSL. Light 8' from DER, 79' left of centerline, 2' AGL/1373' MSL. Trees beginning 261' from DER, 251' left of centerline, up to 50' AGL/1387' MSL. **Rwy 31**, REILS 9' from DER, 79' right of centerline, 2' AGL/1378' MSL. Ground 8' from DER, 223' right of centerline, 1377' MSL. Poles and tower beginning 627' from DER, 570' right of centerline, up to 43' AGL/1430' MSL. Light, 8' from DER, 79' left of centerline, 2' AGL/1377' MSL. Vehicles on road beginning 431' from DER, 32' left of centerline, up to 18' AGL/1394' MSL. Trees, pole, and building beginning 93' from DER, 377' left of centerline, up to 50' AGL/1409' MSL.

**PHILIP, SD**

PHILIP (PHP)  
TAKEOFF MINIMUMS AND (OBSTACLE)  
DEPARTURE PROCEDURES  
ORIG 14037 (FAA)  
TAKEOFF MINIMUMS: **Rwys 5, 23**, NA-Environmental.  
TAKEOFF OBSTACLE NOTES: **Rwy 12**, tree and fence beginning 2' from DER, 334' right of centerline, up to 25' AGL/2204' MSL. Sign, fence and trees beginning 27' from DER, 127' left of centerline, up to 30' AGL/2212' MSL. **Rwy 30**, fence beginning 174' from DER, 286' left of centerline, up to 10' AGL/2219' MSL. Fence and vehicles on road beginning 3' from DER, 448' right of centerline, up to 15' AGL/2219' MSL. Poles beginning 950' from DER, 308' right of centerline, up to 36' AGL/2250' MSL. Terrain beginning 2598' from DER, 251' right of centerline, up to 2277' MSL. Road beginning 4019' from DER, 1413' right of centerline, up to 15' AGL/2322' MSL.

**PIERRE, SD**

PIERRE RGNL (PIR)  
TAKEOFF MINIMUMS AND (OBSTACLE)  
DEPARTURE PROCEDURES  
AMDT 2 85115 (FAA)  
TAKEOFF MINIMUMS: **Rwy 25**, 300-1.

**PINE RIDGE, SD**

PINE RIDGE (IEN)  
TAKEOFF MINIMUMS AND (OBSTACLE)  
DEPARTURE PROCEDURES  
AMDT 1 12208 (FAA)  
TAKEOFF MINIMUMS: **Rwy 6, 24**, NA- closed indefinitely. **Rwy 12**, 300-1 or std. w/min. climb of 450' per NM to 3700. **Rwy 30**, 300-1 or std. w/min. climb of 407' per NM to 3600.  
TAKEOFF OBSTACLE NOTES: **Rwy 12**, vehicle on road 10' from DER, left to right of centerline, 15' AGL/3347' MSL. Fence 200' from DER, 350' right of centerline, 10' AGL/3338' MSL. **Rwy 30**, tree 638' from DER, 492' right of centerline, 50' AGL/3339' MSL. Vehicle on road 10' from DER, right of centerline, 15' AGL/3316' MSL. Vehicle on road 407' from DER, right to left of centerline, 15' AGL/3313' MSL.

**PINECREEK, MN**

PINEY PINECREEK BORDER (48Y)  
TAKEOFF MINIMUMS AND (OBSTACLE)  
DEPARTURE PROCEDURES  
ORIG 12320 (FAA)  
TAKEOFF OBSTACLE NOTES: **Rwy 15**, poles beginning 459' from DER, 415' left of centerline, up to 32' AGL/1092' MSL. Airfield light 8' from DER, 45' right of centerline, 8' AGL/1068' MSL. Vehicle on road 900' from DER, left and right of centerline, 15' AGL/1078' MSL. **Rwy 33**, trees beginning 11' from DER, 47' left of centerline, up to 100' AGL/1084' MSL. Trees beginning 167' from DER, 406' right of centerline, up to 100' AGL/1101' MSL.

17 AUG 2017 to 14 SEP 2017

17 AUG 2017 to 14 SEP 2017

17229

**TAKEOFF MINIMUMS, (OBSTACLE) DEPARTURE PROCEDURES, AND****DIVERSE VECTOR AREA (RADAR VECTORS)**



## TAKEOFF MINIMUMS, (OBSTACLE) DEPARTURE PROCEDURES, AND



17229

## DIVERSE VECTOR AREA (RADAR VECTORS)

## PINE RIVER, MN

## PINE RIVER RGNL (PWC)

TAKEOFF MINIMUMS AND (OBSTACLE)

DEPARTURE PROCEDURES

ORIG 12068 (FAA)

TAKEOFF MINIMUMS: **Rwy 16**, 300-1¼ or std. w/min. climb gradient of 218' per NM to 1500.DEPARTURE PROCEDURE: **Rwy 16**, climb heading 160° to 1800 before turning right.

TAKEOFF OBSTACLE NOTES: **Rwy 16**, trees 2' from DER, 181' right of centerline, up to 5' AGL/1296' MSL. Trees beginning 10' from DER, 113' left of centerline, up to 67' AGL/1366' MSL. Road beginning 63' from DER, 381' right of centerline, up to 15' AGL/1310' MSL. Poles beginning 611' from DER, 424' right of centerline, 26' AGL/1325' MSL. REIL 50' from DER, 76' right of centerline, 7' AGL/1298' MSL. Trees beginning 1267' from DER, 15' right of centerline, up to 100' AGL/1449' MSL. **Rwy 34**, trees beginning 13' from DER, 121' right of centerline, up to 65' AGL/1374' MSL. Trees beginning 1059' from DER, left and right of centerline, up to 101' AGL/1400' MSL. REIL 50' from DER, 77' left of centerline, 7' AGL/1298' MSL. Poles beginning 522' from DER, 520' left of centerline, up to 35' AGL/1334' MSL. Buildings beginning 373' from DER, 465' left of centerline, up to 18' AGL/1327' MSL.

## PIPESTONE, MN

## PIPESTONE MUNI (PQN)

TAKEOFF MINIMUMS AND (OBSTACLE)

DEPARTURE PROCEDURES

ORIG 08045 (FAA)

TAKEOFF MINIMUMS: **Rwys 9,27**, NA-Environmental.TAKEOFF OBSTACLE NOTES: **Rwy 18**, Trees beginning 3811' from DER, 854' right of centerline, up to 100' AGL/1859' MSL.

## PRESTON, MN

## FILLMORE COUNTY (FKA)

TAKEOFF MINIMUMS AND (OBSTACLE)

DEPARTURE PROCEDURES

ORIG 98113 (FAA)

TAKEOFF MINIMUMS: **Rwys 11,29**, 300-1.

## PRINCETON, MN

## PRINCETON MUNI (PNM)

TAKEOFF MINIMUMS AND (OBSTACLE)

DEPARTURE PROCEDURES

AMDT 1 05132 (FAA)

TAKEOFF OBSTACLE NOTES: **Rwy 15**, trees 982' from DER, 335' right of centerline, 50' AGL/1029' MSL. Trees 1449' from DER, 387' left of centerline, 50' AGL/1029' MSL. **Rwy 33**, barn 1159' from DER, 780' right of centerline, 50' AGL/1139' MSL. multiple trees, terrain, and road beginning 36' from DER, 84' right of centerline, up to 50' AGL/1045' MSL.

## RAPID CITY, SD

## RAPID CITY RGNL (RAP)

TAKEOFF MINIMUMS AND (OBSTACLE)

DEPARTURE PROCEDURES

AMDT 7 11069 (FAA)

DEPARTURE PROCEDURE: **Rwy 5**, climb on heading between 255° CW to 210° from DER, or min. climb of 240' per NM to 8800 for all other courses. **Rwy 14**, climb on heading between 325° CW to 210° from DER, or min. climb of 245' per NM to 8900 for all other courses. **Rwy 23**, climb on heading between 210° CCW to 055° from DER, or min. climb of 245' per NM to 8900 for all other courses. **Rwy 32**, climb on heading 324° to 3700 for courses between 255° CW to 140° from DER, or min. climb of 244' per NM to 8800 for all other courses.

TAKEOFF OBSTACLE NOTES: **Rwy 5**, fence 132' from DER, 249' left of centerline, up to 13' AGL/3215' MSL. Trees beginning 16' from DER, 188' right of centerline, up to 25' AGL/3234' MSL. Trees beginning 11' from DER, 111' left of centerline, up to 25' AGL/3234' MSL. **Rwy 14**, trees beginning 136' from DER, 123' right of centerline, up to 25' AGL/3174' MSL. Trees beginning 33' from DER, 229' left of centerline, up to 25' AGL/3164' MSL. **Rwy 23**, vehicle on road 36' from DER, 121' left of centerline, up to 15' AGL/3175' MSL. Hanger 201' from DER, 298' left of centerline, up to 30' AGL/3193' MSL. Fence 333' from DER, 255' right of centerline, up to 14' AGL/3184' MSL. Trees beginning 199' from DER, 175' right of centerline, up to 25' AGL/3194' MSL. Trees beginning 158' from DER, 159' left of centerline, up to 25' AGL/3194' MSL. **Rwy 32**, fence 1001' from DER, 750' right of centerline, up to 13' AGL/3233' MSL. Obstruction light 661' from DER, 242' left of centerline, up to 43' AGL/3213' MSL. Trees beginning 31' from DER, 262' right of centerline, up to 25' AGL/3254' MSL. Trees beginning 61' from DER, 146' left of centerline, up to 25' AGL/3204' MSL.

## RAY S. MILLER AAF (KRYM)

## CAMP RIPLEY, MN

TAKEOFF MINIMUMS AND (OBSTACLE)

DEPARTURE PROCEDURES

AMDT 2, 09155

TAKEOFF OBSTACLES: **Rwy 13**, Terrain 1270' MSL, 73' from DER, 8' left and right of centerline. Vehicle 15' AGL/1180' MSL, 765' from DER, 638' left of centerline. **Rwy 31**, Terrain 1273' MSL, 54' from DER, 9' left and right of centerline. Trees 64' AGL/1282' MSL, 798' from DER, 325' left and right of centerline.

## RED WING, MN

## RED WING RGNL (RGK)

TAKEOFF MINIMUMS AND (OBSTACLE)

DEPARTURE PROCEDURES

AMDT 2 11013 (FAA)

TAKEOFF MINIMUMS: **Rwy 9**, std. w/ min. climb of 299' per NM to 1700

TAKEOFF OBSTACLE NOTES: **Rwy 9**, pole 1080' from DER, 554' left of centerline, 35' AGL/812' MSL. Trees beginning 1375' from DER, 387' left of centerline, up to 75' AGL/1114' MSL. Trees beginning 1231' from DER, 397' right of centerline, up to 49' AGL/1108' MSL. **Rwy 27**, trees beginning 3451' from DER, 584' left of centerline, up to 100' AGL/879' MSL. Trees beginning 406' from DER, 439' right of centerline, up to 100' AGL/879' MSL.

17229



## TAKEOFF MINIMUMS, (OBSTACLE) DEPARTURE PROCEDURES, AND



## DIVERSE VECTOR AREA (RADAR VECTORS)



# TAKEOFF MINIMUMS, (OBSTACLE) DEPARTURE PROCEDURES, AND DIVERSE VECTOR AREA (RADAR VECTORS)

17229

## REDWOOD FALLS, MN

### REDWOOD FALLS MUNI (RWF)

TAKEOFF MINIMUMS AND (OBSTACLE)  
DEPARTURE PROCEDURES  
ORIG 09071 (FAA)

TAKEOFF MINIMUMS: **Rwys 5, 23**, NA-Environmental.  
TAKEOFF OBSTACLE NOTES: **Rwy 12**, numerous buildings beginning 388' from DER, 376' right of centerline, up to 13' AGL/1052' MSL. Numerous fences beginning 6' from DER, 329' right of centerline, up to 13' AGL/1052' MSL. Tree 62' from DER, 444' left of centerline, 11' AGL/1040' MSL. **Rwy 30**, multiple trees beginning 865' from DER, 401' right of centerline, up to 100' AGL/1119' MSL. Vehicle on road 128' from DER, 306' right of centerline, 15' AGL/1027' MSL.

## ROCHESTER, MN

### ROCHESTER INTL (RST)

TAKEOFF MINIMUMS AND (OBSTACLE)  
DEPARTURE PROCEDURES  
ORIG 09015 (FAA)

TAKEOFF OBSTACLE NOTES: **Rwy 2**, road 73' from DER, 385' right of centerline, 10' AGL/1292' MSL. Tree 4377' from DER, 1132' right of centerline, 100' AGL/1399' MSL. Road 268' from DER, 366' right of centerline, 10' AGL/1290' MSL. **Rwy 13**, tree 1498' from DER, 840' right of centerline, 44' AGL/1348' MSL. **Rwy 20**, pole 259' from DER, 407' right of centerline, 23' AGL/1338' MSL. Roads beginning 1' from DER, 231' right of centerline, up to 10' AGL/1327' MSL. **Rwy 31**, tree 4760' from DER, 1103' left of centerline, 100' AGL/1389' MSL.

## ROLLA, ND

### ROLLA MUNI (06D)

TAKEOFF MINIMUMS AND (OBSTACLE)  
DEPARTURE PROCEDURES  
ORIG 11013 (FAA)

TAKEOFF MINIMUMS: **Rwys 7, 25**, NA-Environmental.  
TAKEOFF OBSTACLE NOTES: **Rwy 14**, vehicle on road 49' from DER, 23' left of centerline, 15' AGL/1830' MSL. Trees beginning 1232' from DER, 209' left of centerline, up to 80' AGL/1867' MSL. **Rwy 32**, trees beginning 2207' from DER, 59' left of centerline, up to 80' AGL/1929' MSL. Trees beginning 651' from DER, 80' right of centerline, up to 80' AGL/1939' MSL.

## ROSEAU, MN

### ROSEAU MUNI-RUDY BILLBERG FIELD (ROX)

TAKEOFF MINIMUMS AND (OBSTACLE)  
DEPARTURE PROCEDURES  
ORIG 07242 (FAA)

TAKEOFF OBSTACLE NOTES: **Rwy 16**, building 258' from DER, 505' right of centerline, 24' AGL/1078' MSL. Tree 1582' from DER, 337' left of centerline, 47' AGL/1101' MSL. **Rwy 34**, truck on road 41' from DER, 511' left of centerline, 15' AGL/1069' MSL.

## RUGBY, ND

### RUGBY MUNI (RUG)

TAKEOFF MINIMUMS AND (OBSTACLE)  
DEPARTURE PROCEDURES  
AMDT 1 14205 (FAA)

TAKEOFF MINIMUMS: **Rwy 12**, 300-1¼ or std. w/min. climb of 300' per NM to 2000.  
TAKEOFF OBSTACLE NOTES: **Rwy 12**, trees beginning 1186' from DER, 432' left of centerline, up to 67' AGL/1620' MSL. Elevators beginning 1.4 NM from DER, 819' right of centerline, up to 246' AGL/1804' MSL. **Rwy 30**, edge light 11' from DER, 9' right of centerline, 1' AGL/1534' MSL. Edge light 11' from DER, 20' left of centerline, 1' AGL/1534' MSL.

## RUSH CITY, MN

### RUSH CITY RGNL (ROS)

TAKEOFF MINIMUMS AND (OBSTACLE)  
DEPARTURE PROCEDURES  
ORIG 11041 (FAA)

TAKEOFF OBSTACLE NOTES: **Rwy 16**, multiple trees beginning 27' from DER, 315' left of centerline, up to 100' AGL/ 969' MSL. Multiple trees beginning 838' from DER, 226' right of centerline, up to 100' AGL/ 997' MSL. Pole 1712' from DER, 811' left of centerline, 50' AGL/ 970' MSL.  
**Rwy 34**, trees 91' from DER, 472' left of centerline, 100' AGL/ 939' MSL. Trees 1173' from DER, 375' right of centerline, 100' AGL/ 1029' MSL. Trees 2250' from DER, 928' left of centerline, 100' AGL/ 1009' MSL.

## RUSHFORD, MN

### RUSHFORD MUNI (55Y)

TAKEOFF MINIMUMS AND (OBSTACLE)  
DEPARTURE PROCEDURES  
AMDT 2 12096 (FAA)

DEPARTURE PROCEDURE: **Rwy 16**, climb heading 161° to 1800 before turning left.  
TAKEOFF OBSTACLE NOTES: **Rwy 16**, trees beginning 132' from DER, 448' left of centerline, up to 100' AGL/1280' MSL. Trees beginning 899' from DER, 685' right of centerline, up to 100' AGL/1319' MSL. **Rwy 34**, Trees beginning 308' from DER, 147' right of centerline, up to 100' AGL/1299' MSL. Trees beginning 761' from DER, 34' left of centerline, up to 100' AGL/1319' MSL. Trees beginning 1169' from DER, 23' right of centerline, up to 100' AGL/1344' MSL.

17 AUG 2017 to 14 SEP 2017

17 AUG 2017 to 14 SEP 2017

17229

# TAKEOFF MINIMUMS, (OBSTACLE) DEPARTURE PROCEDURES, AND DIVERSE VECTOR AREA (RADAR VECTORS)



## TAKEOFF MINIMUMS, (OBSTACLE) DEPARTURE PROCEDURES, AND



17229

## DIVERSE VECTOR AREA (RADAR VECTORS)

## ST. CLOUD, MN

ST. CLOUD RGNL (STC)

TAKEOFF MINIMUMS AND (OBSTACLE)  
DEPARTURE PROCEDURES

ORIG 09239 (FAA)

TAKEOFF MINIMUMS: **Rwy 5**, 300-1¼ or std. w/ min. climb of 201' per NM to 1300 or alternatively, with standard TAKEOFF minimums and a normal 200'/NM climb gradient. TAKEOFF must occur no later than 1100' prior to DER.

TAKEOFF OBSTACLE NOTES: **Rwy 5**, tower 6201' from DER, 1416' left of centerline, 149' AGL/1179' MSL. Multiple trees beginning 17' from DER, 373' right of centerline, up to 59' AGL/1081' MSL. Multiple trees beginning 1752' from DER, 56' left of centerline, up to 80' AGL/1102' MSL. **Rwy 13**, tree 1654' from DER, 884' right of centerline, 61' AGL/1078' MSL. Tree 1265' from DER, 794' left of centerline, 42' AGL/1059' MSL. **Rwy 23**, trees 2109' from DER, 29' right of centerline, up to 61' AGL/1082' MSL. Trees 1725' from DER, 93' left of centerline, up to 55' AGL/1076' MSL. Fence 74' from DER, 216' left of centerline, 2' AGL, 1023' MSL. **Rwy 31**, terrain beginning 29' from DER, 50' right of centerline, up to 1083' MSL. Terrain beginning 107' from DER, 7' left of centerline, up to 1060' MSL.

## ST. JAMES, MN

ST. JAMES MUNI (JYG)

TAKEOFF MINIMUMS AND (OBSTACLE)  
DEPARTURE PROCEDURES

ORIG 94342 (FAA)

DEPARTURE PROCEDURE: **Rwy 15**, climb to 1900 before turning eastbound.

## ST. PAUL MN

LAKE ELMO (21D)

TAKEOFF MINIMUMS AND (OBSTACLE)  
DEPARTURE PROCEDURES

AMDT 1A 15148 (FAA)

TAKEOFF MINIMUMS: **Rwy 14**, 400-2¼ or std. w/min. climb of 233' per NM to 1400.DEPARTURE PROCEDURE: **Rwy 4**, climb heading 038° to 1600 before turning right.

TAKEOFF OBSTACLE NOTES: **Rwy 4**, trees beginning at DER, 458' right of centerline, up to 100' AGL/1039' MSL. Trees and buildings beginning 94' from DER, 377' left of centerline up to 100' AGL/1049' MSL. **Rwy 14**, trees and vehicles on road beginning 152' from DER, left and right of centerline, up to 100' AGL/933' MSL. Trees beginning 1106' from DER, right and left of centerline, up to 100' AGL/1005' MSL. **Rwy 22**, buildings and pole beginning 100' from DER, 476' right of centerline, up to 39' AGL/962' MSL. Trees beginning 1912' from DER, left and right of centerline, up to 100' AGL/986' MSL. **Rwy 32**, sign 13' from DER, 154' right of centerline, 3' AGL/924' MSL. Pole 388' from DER, 388' left of centerline, 34' AGL/951' MSL. Poles and trees beginning 876' from DER, 73' right of centerline, up to 100' AGL/1004' MSL.

## ST. PAUL MN (CON'T)

ST. PAUL DOWNTOWN HOLMAN FIELD  
(STP)TAKEOFF MINIMUMS AND (OBSTACLE)  
DEPARTURE PROCEDURES

AMDT 8A 17229 (FAA)

TAKEOFF MINIMUMS: **Rwy 31**, NA - obstacles. **Rwy 9**, std. w/min. climb of 340' per NM to 1300. **Rwy 13**, std. w/ min. climb of 235' per NM to 1500. **Rwy 27**, 600-2 or std. w/min. climb of 442' per NM to 1500. **Rwy 32**, std. w/min. climb of 340' per NM to 3000.

DEPARTURE PROCEDURE: **Rwy 9**, climb heading 091° to 1400 before proceeding on course. **Rwy 13**, climb heading 128° to 1300 before proceeding on course. **Rwy 14**, climb heading 146° to 1400 before proceeding on course. **Rwy 27**, climb heading 271° to 1700 before proceeding on course. **Rwy 32**, climb heading 326° to 1400 before proceeding on course.

TAKEOFF OBSTACLE NOTES: **Rwy 9**, mobile crane 1362' from DER, 124' left of centerline, 68' AGL/758' MSL. Trees and silo 1464' from DER, 178' right of centerline, up to 116' AGL/816' MSL. Trees and pole beginning 1.1 NM from DER, left and right of centerline, up to 100' AGL/1099' MSL. **Rwy 13**, tree and tower beginning 1125' from DER, 609' left of centerline, up to 67' AGL/767' MSL. Tree, pole, vent on building, stacks, and oil on stack beginning 1672' from DER, 55' right of centerline, up to 120' AGL/820' MSL. Trees beginning 1.9 NM from DER, 2938' left of centerline, up to 100' AGL/1020' MSL. **Rwy 14**, trees, OL on DME antenna, and pole beginning 290' from DER, 1' right of centerline, up to 129' AGL/819' MSL. Trees and pole beginning 1099' from DER, 6' left of centerline, up to 87' AGL/777' MSL. **Rwy 27**, trees, light pole, and flagpole beginning 617' from DER, 198' left of centerline, up to 119' AGL/829' MSL. OL on antenna, buildings, tower, and tree beginning 810' from DER, 26' right of centerline, up to 165' AGL/955' MSL. Trees and building beginning 3886' from DER, 120' left of centerline, up to 84' AGL/1014' MSL. Tower 1.7 NM from DER, 633' left of centerline, 569' AGL/1279' MSL. **Rwy 32**, vehicle on road, trees, railroad, poles, and NAVAID beginning 179' from DER, 267' right of centerline, up to 58' AGL/758' MSL. Vehicle on road, railroad, and trees beginning 192' from DER, left and right of centerline, up to 59' AGL/759' MSL. NAVAID 257' from DER, on centerline, 26' AGL/726' MSL. Trees, poles, buildings, and tower beginning 3674' from DER, 616' right of centerline, up to 157' AGL/973' MSL. Trees, buildings, tower, sign, and stack beginning 1924' from DER, 378' left of centerline, up to 143' AGL/969' MSL.

17 AUG 2017 to 14 SEP 2017

17 AUG 2017 to 14 SEP 2017

17229



## TAKEOFF MINIMUMS, (OBSTACLE) DEPARTURE PROCEDURES, AND



## DIVERSE VECTOR AREA (RADAR VECTORS)

# TAKEOFF MINIMUMS, (OBSTACLE) DEPARTURE PROCEDURES, AND DIVERSE VECTOR AREA (RADAR VECTORS)

17229

## SAUK CENTRE, MN

### SAUK CENTRE MUNI (D39)

TAKEOFF MINIMUMS AND (OBSTACLE)

DEPARTURE PROCEDURES

ORIG 11237 (FAA)

TAKEOFF MINIMUMS: **Rwy 8, 26**, NA -Environmental.TAKEOFF OBSTACLE NOTES: **Rwy 14**, tree 1269' from DER, 39' right of centerline, 80' AGL/1319' MSL.**Rwy 32**, tree 1105' from DER, 136' left of centerline, 80' AGL/1299' MSL.

## SILVER BAY, MN

### SILVER BAY MUNI (BFW)

TAKEOFF MINIMUMS AND (OBSTACLE)

DEPARTURE PROCEDURES

AMDT 1 10322 (FAA)

TAKEOFF MINIMUMS: **Rwy 7**, 500-3 or std. w/min.climb of 240' per NM to 1700. **Rwy 25**, 400-2½ or std.

w/ min. climb of 215' per NM to 1600 or alternatively,

with std. takeoff minimums and a normal 200' per NM

climb gradient, takeoff must occur no later than 1600'

prior to DER.

DEPARTURE PROCEDURE: **Rwy 7**, Climb heading

087° to 1700 before turning left.

TAKEOFF OBSTACLE NOTES: **Rwy 7**, vehicles on

roadway 4' from DER, 257' right of centerline, up to 16'

AGL/1155' MSL. Trees beginning 7' from DER, 104'

right of centerline, up to 100' AGL/1509' MSL. Hangar

268' from DER, 268' left of centerline, 30' AGL/1149'

MSL. Trees beginning 1088' from DER, 774' left of

centerline, up to 100' AGL/1549' MSL. **Rwy 25**, trees

beginning 170' from DER, 152' right of centerline, up to

100' AGL/1419' MSL. Trees beginning 4' from DER,

164' left of centerline, up to 100' AGL/1229' MSL.

## SIOUX FALLS, SD

### JOE FOSS FIELD (FSD)

TAKEOFF MINIMUMS AND (OBSTACLE)

DEPARTURE PROCEDURES

AMDT 8 13234 (FAA)

TAKEOFF MINIMUMS: **Rwy 33**, 200-1¼ or std. w/ min.

climb of 343' per NM to 1700.

DEPARTURE PROCEDURE: **Rwy 3**, climb heading 030°to 2300 before turning eastbound. **Rwy 9**, climb heading

098° to 2000, then left turn direct FSD VORTAC,

continue climb in FSD VORTAC holding pattern (hold

NW, left turns, 147° inbound) to cross FSD VORTAC at

or above MEA for route of flight: **Rwy 15**, climb heading

150° to 2000, then right turn direct FSD VORTAC,

continue climb in FSD VORTAC holding pattern (hold

NW, left turns, 147° inbound) to cross FSD VORTAC at

or above MEA for route of flight. **Rwy 21**, climb heading210° to 2200 before turning eastbound. **Rwy 27**, climbheading 278° to 2300 before turning eastbound. **Rwy 33**,

climb heading 330° to 2300 before turning eastbound.

TAKEOFF OBSTACLE NOTES: **Rwy 3**, vehicles on road

20' from DER, 448' left of centerline, 21' AGL/1441' MSL.

Light support 24' from DER, 85' left of centerline, 11'

AGL/1431' MSL. Trees beginning 1200' from DER, 682'

left of centerline, up to 42' AGL/1462' MSL. Trees

beginning 2085' from DER, 908' right of centerline, up to

64' AGL/1493' MSL. **Rwy 9**, vehicles on road beginning

50' from DER, 474' left of centerline, 18' AGL/1438' MSL.

Multiple poles beginning 1257' from DER, 22' left of

centerline, up to 56' AGL/1476' MSL. Navaid and

windsock beginning 324' from DER, 460' right of

centerline, up to 13' AGL/1433' MSL. Multiple poles

beginning 1806' from DER, 136' right of centerline, up to

55' AGL/1475' MSL. Crane, buildings, antenna on

building, trees, and multiple transmission towers

beginning 1949' from DER, 462' right of centerline, up to

122' AGL/1562' MSL. **Rwy 15**, light support 10' from

DER, 39' left of centerline 4' AGL/1424' MSL. Multiple

poles, buildings, trees, and transmission towers

beginning 553' from DER, 220' left of centerline, up to

100' AGL/1559' MSL. Vehicles on road beginning 194'

from DER, 551' right of centerline, 16' AGL/1436' MSL.

Multiple poles and trees beginning 1330' from DER, 19'

right of centerline, up to 88' AGL/1536' MSL. **Rwy 21**,

sign 7' from DER, 304' left of centerline, 6' AGL/1426'

MSL. Vehicles on road 393' from DER, 531' left of

centerline, 15' AGL/1435' MSL. Multiple trees beginning

866' from DER, 149' left of centerline, up to 100'

AGL/1529' MSL. Vehicles on road 385' from DER, 456'

right of centerline, 17' AGL/1437' MSL. Multiple trees

beginning 424' from DER, 25' right of centerline, up to 84'

AGL/1504' MSL. **Rwy 27**, sign 27' from DER, 240' right of

centerline, 5' AGL/1425' MSL. Trees beginning 1423'

from DER, 793' right of centerline, up to 76' AGL/1496'

MSL. Navaid beginning 1818' from DER, 831' left of

centerline, 50' AGL/1471' MSL. Trees beginning 2158'

from DER, 386' left of centerline, up to 76' AGL/1496'

MSL. **Rwy 33**, navaid 34' from DER, 115' right of

centerline, 11' AGL/1431' MSL. Multiple poles and trees

beginning 3491' from DER, 15' right of centerline, up to

100' AGL/1579' MSL. Navaid 34' from DER, 115' left of

centerline, 11' AGL/1431' MSL. Vehicles on road

beginning 116' from DER, 496' left of centerline, 21'

AGL/1441' MSL. Tank, navaid, poles, trees, and towers

beginning 2295' from DER, 80' left of centerline, up to

100' AGL/1610' MSL.

17 AUG 2017 to 14 SEP 2017

17 AUG 2017 to 14 SEP 2017

17229

# TAKEOFF MINIMUMS, (OBSTACLE) DEPARTURE PROCEDURES, AND DIVERSE VECTOR AREA (RADAR VECTORS)



## TAKEOFF MINIMUMS, (OBSTACLE) DEPARTURE PROCEDURES, AND



17229

## DIVERSE VECTOR AREA (RADAR VECTORS)

**SISSETON, SD**

SISSETON MUNI (8D3)

TAKEOFF MINIMUMS AND (OBSTACLE)  
DEPARTURE PROCEDURES

ORIG 16203 (FAA)

TAKEOFF MINIMUMS: **Rwy 04,22**, NA-Environmental.  
DEPARTURE PROCEDURE: **Rwy 34**, climb heading  
344° to 1600 before turning left.TAKEOFF OBSTACLE NOTES: **Rwy 16**, poles  
beginning 1462' from DER, 709' left of centerline,  
1216' MSL. Fence beginning 51' from DER, crossing  
left to right, 5' AGL/1166' MSL. Trees beginning 934'  
from DER, 710' right of centerline, 1235' MSL. Pole  
1508' from DER, 878' right of centerline, 41' AGL/1201'  
MSL. Pole 1562' from DER, 638' right of centerline, 45'  
AGL/1205' MSL. **Rwy 34**, trees beginning 832' from  
DER, 618' left of centerline, 1194' MSL.**SLAYTON, MN**

SLAYTON MUNI (DVP)

TAKEOFF MINIMUMS AND (OBSTACLE)  
DEPARTURE PROCEDURES

ORIG 11265 (FAA)

TAKEOFF OBSTACLE NOTES: **Rwy 17**, trees  
beginning 951' from DER, 345' right of centerline, up to  
100' AGL/1723' MSL. Power lines beginning 1531' from  
DER, left and right of centerline, 40' AGL/1663' MSL.  
Vehicle on road beginning at DER, 234' right of  
centerline, 15' AGL/1638' MSL. Terrain beginning 65'  
from DER, left and right of centerline up to 1657' MSL.  
**Rwy 35**, trees beginning 1034' from DER, left and  
right of centerline, up to 100' AGL/1715' MSL. Power  
lines beginning 892' from DER, 206' left of centerline,  
40' AGL/1655' MSL. Vehicle on roads beginning at  
DER, 230' left and right of centerline, 15' AGL/1630'  
MSL. Terrain beginning 271' from DER, left and right of  
centerline up to 1650' MSL.**SOUTH ST PAUL, MN**

SOUTH ST PAUL MUNI-RICHARD E

FLEMING FLD (SGS)

TAKEOFF MINIMUMS AND (OBSTACLE)  
DEPARTURE PROCEDURES

AMDT 1 14317 (FAA)

TAKEOFF MINIMUMS: **Rwy 16**, 300 -1¼ or std. w/min.  
climb of 225' per NM to 1200 or alternatively, with  
standard takeoff minimums and a normal 200' per NM  
climb gradient, takeoff must occur no later than 1900'  
prior to DER. **Rwy 34**, 200-1¼ or std. w/min. climb of  
220' per NM to 1100 or alternatively, with standard  
takeoff minimums and a normal 200' per NM climb  
gradient, takeoff must occur no later than 1500' prior to  
DER.TAKEOFF OBSTACLE NOTES: **Rwy 16**, tree, 1' from  
DER, 321' left of centerline, 56' AGL/877' MSL. Trees  
beginning 108' from DER, 103' left of centerline, up to 68'  
AGL/889' MSL. Trees beginning 1021' from DER, 88' left  
of centerline, up to 85' AGL/898' MSL. Trees beginning  
116' from DER, 193' right of centerline, up to 79'  
AGL/880' MSL. Poles and trees beginning 1021' from  
DER, 6' left of centerline, up to 82' AGL/901' MSL. Trees  
beginning 2048' from DER, 71' left of centerline, up to 68'  
AGL/889' MSL. Tower 1 mile from DER, 657' left of  
centerline, 103' AGL/987' MSL. Trees and buildings  
beginning 84' from DER, 351' right of centerline, up to 38'  
AGL/856' MSL. Trees beginning 1042' from DER, 54'  
right of centerline, up to 72' AGL/892' MSL. Trees  
beginning 2017' from DER, 10' right of centerline, up to  
80' AGL/899' MSL.**SPEARFISH, SD**

BLACK HILLS-CLYDE ICE FIELD (SPF)

TAKEOFF MINIMUMS AND (OBSTACLE)  
DEPARTURE PROCEDURES

AMDT 1 11153 (FAA)

TAKEOFF MINIMUMS: **Rwys 4, 8, 22, 26**, NA -  
Environmental. **Rwy 13**, std. w/min. climb of 334' per NM  
to 6300. **Rwy 31**, 400-1¼ or std. w/min. climb of 329' per  
NM to 4400.DEPARTURE PROCEDURE: **Rwy 13**, climbing heading  
109° to 6300, then climbing left turn to intercept SPF  
NDB 090° bearing inbound, thence ... **Rwy 31**, climb to  
6000 then climbing right turn to intercept SPF NDB 330°  
bearing inbound, thence ... enter SPF holding pattern  
(Northeast, right turn, 226° inbound), continue climb in  
hold to enroute MEA before proceeding on course.TAKEOFF OBSTACLE NOTES: **Rwy 13**, terrain 175' from  
DER, 478' right of centerline, 3903' MSL. **Rwy 31**,  
structure 127' from DER, on centerline, 8' AGL/3888'  
MSL. Terrain 52' from DER, 497' left of centerline, 3918'  
MSL. Pole 734' from DER, 572' left of centerline, 9'  
AGL/3986' MSL. Terrain 195' from DER, 499' right of  
centerline, 3916' MSL. Pole 285' from DER, 311' right of  
centerline, 9' AGL/3978' MSL. Trees 1.3 NM from DER,  
2481' right of centerline, up to 100' AGL/4225' MSL.

17229



## TAKEOFF MINIMUMS, (OBSTACLE) DEPARTURE PROCEDURES, AND



## DIVERSE VECTOR AREA (RADAR VECTORS)



# TAKEOFF MINIMUMS, (OBSTACLE) DEPARTURE PROCEDURES, AND DIVERSE VECTOR AREA (RADAR VECTORS)



17229

## SPRINGFIELD, MN

### SPRINGFIELD MUNI (D42)

TAKEOFF MINIMUMS AND (OBSTACLE)  
DEPARTURE PROCEDURES  
ORIG 13010 (FAA)

TAKEOFF OBSTACLE NOTES: **Rwy 13**, trees beginning 267' from DER, 267' right of centerline, up to 100' AGL/1149' MSL. Building 802' from DER, 684' left of centerline, up to 30' AGL/1089' MSL. Trees beginning 763' from DER, 603' left of centerline, up to 100' AGL/1159' MSL. Trees beginning 1083' from DER, 240' right of centerline, up to 100' AGL/1169' MSL. Trees beginning 3562' from DER, 98' left of centerline, up to 100' AGL/1169' MSL. **Rwy 31**, trees beginning 2248' from DER, 183' left of centerline, up to 100' AGL/1189' MSL. Building 604' from DER, 563' right of centerline, up to 30' AGL/1109' MSL. Trees beginning 656' from DER, 481' right of centerline, up to 100' AGL/1169' MSL. Trees beginning 3889' from DER, 1495' right of centerline, up to 100' AGL/1199' MSL.

## STANLEY, ND

### STANLEY MUNI (08D)

TAKEOFF MINIMUMS AND (OBSTACLE)  
DEPARTURE PROCEDURES  
ORIG 11013 (FAA)

TAKEOFF OBSTACLE NOTES: **Rwy 27**, Power line beginning 23' from DER, right to left of centerline, up to 40' AGL/2299' MSL.

## STAPLES, MN

### STAPLES MUNI (SAZ)

TAKEOFF MINIMUMS AND (OBSTACLE)  
DEPARTURE PROCEDURES  
AMDT 3 12152 (FAA)

TAKEOFF MINIMUMS: **Rwy 14**, 400-2 or std. w/min. climb of 285' per NM to 1800.

TAKEOFF OBSTACLE NOTES: **Rwy 14**, towers beginning 1.60 NM from DER, 1868' right of centerline, up to 367' AGL/1634' MSL. Vehicles on road and trees beginning 38' from DER, 76' right of centerline, up to 63' AGL/1332' MSL. Vehicles on road, trees and pole beginning 38' from DER, 77' left of centerline, up to 63' AGL/1342' MSL. **Rwy 32**, vehicles on road and trees beginning 228' from DER, 8' right of centerline, up to 85' AGL/1374' MSL. Vehicles on road and trees beginning 2' from DER, 18' left of centerline, up to 79' AGL/1368' MSL.

## STURGIS, SD

### STURGIS MUNI (49B)

TAKEOFF MINIMUMS AND (OBSTACLE)  
DEPARTURE PROCEDURES  
AMDT 1A 15288 (FAA)

TAKEOFF MINIMUMS: **Rwys 5, 23**, NA-Environmental. DEPARTURE PROCEDURE: **Rwy 11**, climb heading 096° to 5200, then climbing right turn to 7000 direct RAP VORTAC. **Rwy 29**, climb heading 291° to 5000, then climbing right turn to 7000 direct RAP VORTAC. TAKEOFF OBSTACLE NOTES: **Rwy 11**, fence 37' from DER, 347' left of centerline, 6' AGL/3210' MSL. **Rwy 29**, trees 63' from DER, 271' right of centerline, up to 20' AGL/3265' MSL. Ground 134' from DER, 443' left of centerline, 3248' MSL.

## THIEF RIVER FALLS, MN

### THIEF RIVER FALLS RGNL (TVF)

TAKEOFF MINIMUMS AND (OBSTACLE)  
DEPARTURE PROCEDURES  
ORIG-A 14317 (FAA)

TAKEOFF OBSTACLE NOTES: **Rwy 4**, light 41' from DER, 77' left of centerline, 2' AGL/1120' MSL. Terrain 2' from DER, 255' right of centerline, 1119' MSL. Light 41' from DER, 75' right of centerline, 2' AGL/1120' MSL. Road with vehicle beginning 578' from DER, 595' right of centerline, up to 15' AGL/1135' MSL. **Rwy 13**, lights beginning 6' from DER, 4' left of centerline, up to 2' AGL/1114' MSL. Sign 22' from DER, 253' left of centerline, 3' AGL/1114' MSL. Lights beginning 6' from DER, 5' right of centerline, up to 2' AGL/1114' MSL. **Rwy 22**, utilities and lights beginning 10' from DER, 77' left of centerline, up to 4' AGL/1115' MSL. Sign 38' from DER, 197' left of centerline, 4' AGL/1115' MSL. Light 40' from DER, 77' right of centerline, 3' AGL/1114' MSL. Trees beginning 545' from DER, 183' right of centerline, up to 91' AGL/1181' MSL. **Rwy 31**, lights beginning 9' from DER, 39' left of centerline, up to 3' AGL/1116' MSL. Trees beginning 275' from DER, 549' left of centerline, up to 61' AGL/1172' MSL. Lights beginning 9' from DER, 40' right of centerline, up to 2' AGL/1116' MSL.

## TIOGA, ND

### TIOGA MUNI (D60)

TAKEOFF MINIMUMS AND (OBSTACLE)  
DEPARTURE PROCEDURES  
ORIG 09239 (FAA)

TAKEOFF MINIMUMS: **Rwys 3, 21**, NA-Environmental. TAKEOFF OBSTACLE NOTES: **Rwy 12**, vehicle on road 1243' from DER, 78' left of centerline, 15' AGL/2304' MSL. Vehicle on road, tree and pole beginning 618' from DER, 50' right of centerline, up to 100' AGL/2419' MSL. Ground 21' from DER, 481' right of centerline, 2272' MSL. **Rwy 30**, vehicle on road 1' from DER, 144' left of centerline, 15' AGL/2256' MSL.

## TOWER, MN

### TOWER MUNI (12D)

TAKEOFF MINIMUMS AND (OBSTACLE)  
DEPARTURE PROCEDURES  
ORIG 09127 (FAA)

TAKEOFF MINIMUMS: **Rwy 8**, NA - Obstacles. TAKEOFF OBSTACLE NOTES: **Rwy 26**, tree 2315' from DER, 700' right of centerline, 100' AGL/1479' MSL.

## TRACY, MN

### TRACY MUNI (TKC)

TAKEOFF MINIMUMS AND (OBSTACLE)  
DEPARTURE PROCEDURES  
ORIG 11013 (FAA)

TAKEOFF MINIMUMS: **Rwys 6, 17, 24, 35**, NA-Environmental. **Rwy 29**, 300-2 ¼ or std. w/ min. climb of 250' per NM to 1800. TAKEOFF OBSTACLE NOTES: **Rwy 11**, tree 56' from DER, 174' right of centerline, 20' AGL/1342' MSL. Numerous trees and bushes beginning 137' from DER, 86' left of centerline, up to 100' AGL/1410' MSL. **Rwy 29**, tower 1.9 NM from DER, 1951' left of centerline, 265' AGL/1625' MSL.

17229



# TAKEOFF MINIMUMS, (OBSTACLE) DEPARTURE PROCEDURES, AND DIVERSE VECTOR AREA (RADAR VECTORS)





# TAKEOFF MINIMUMS, (OBSTACLE) DEPARTURE PROCEDURES, AND

## DIVERSE VECTOR AREA (RADAR VECTORS)

17229

**TWO HARBORS, MN**

RICHARD B. HE'GESON (TWM)  
TAKEOFF MINIMUMS AND (OBSTACLE)  
DEPARTURE PROCEDURES  
ORIG 11181 (FAA)

TAKEOFF MINIMUMS: **Rwys 15,33**, NA - environmental.

TAKEOFF OBSTACLE NOTES: **Rwy 6**, multiple trees, beginning 20' from DER, 44' right of centerline, up to 40' AGL/1122' MSL. Multiple trees, beginning 46' from DER, 201' left of centerline, up to 40' AGL/1126' MSL.

**Rwy 24**, multiple trees, beginning 13' from DER, 61' right of centerline, up to 40' AGL/1156' MSL. Multiple trees, beginning 56' from DER, 97' left of centerline, up to 40' AGL/1138' MSL.

**VALLEY CITY, ND**

BARNES COUNTY MUNI (BAC)  
TAKEOFF MINIMUMS AND (OBSTACLE)  
DEPARTURE PROCEDURES  
ORIG 10098 (FAA)

TAKEOFF OBSTACLE NOTES: **Rwy 13**, vehicle on road, 111' from DER, 356' right of centerline, 15' AGL/1396' MSL. Trees beginning 644' from DER, 242' right of centerline, up to 40' AGL/1421' MSL. **Rwy 31**, terrain beginning 32' from DER, 20' right of centerline, up to 1424' MSL. Vehicle on road 38' from DER, 285' right of centerline, 15' AGL/1418' MSL. Fence 71' from DER, 292' left of centerline, 4' AGL/1407' MSL. Terrain beginning 120' from DER, 125' left of centerline, up to 1447' MSL. Fence 198' from DER, 299' right of centerline, 4' AGL/1408' MSL. Trees beginning 365' from DER, 10' left of centerline, up to 40' AGL/1457' MSL. Tree 545' from DER, 607' right of centerline, 16' AGL/1436' MSL.

**VERMILLION, SD**

HAROLD DAVIDSON FIELD (VMR)  
TAKEOFF MINIMUMS AND (OBSTACLE)  
DEPARTURE PROCEDURES  
AMDT 1 09239 (FAA)

TAKEOFF OBSTACLE NOTES: **Rwy 12**, road 1' from DER, 200' right of centerline, up to 15' AGL/1156' MSL. Multiple trees beginning 541' from DER, 366' right of centerline, up to 62' AGL/1202' MSL. **Rwy 30**, road 79' from DER 342' left of centerline 15' AGL/1155' MSL. Road 200' from DER, 450' right of centerline, 15' AGL/1160' MSL. Fence 199' from DER, 347' left of centerline, 6' AGL/1150' MSL.

**WADENA, MN**

WADENA MUNI (ADC)  
TAKEOFF MINIMUMS AND (OBSTACLE)  
DEPARTURE PROCEDURES  
AMDT 1 13234 (FAA)

TAKEOFF OBSTACLE NOTES: **Rwy 34**, runway lights beginning 38' from DER, 76' left and right of centerline 5' AGL/1369' MSL. Rising terrain and trees beginning 69' from DER, 267' left of centerline, up to 20' AGL/1381' MSL. Trees beginning 1678' from DER, 213' right of centerline, up to 91' AGL/1436' MSL. Trees beginning 2445' from DER, 272' right of centerline, up to 96' AGL/1447' MSL.

**WAGNER, SD**

WAGNER MUNI (AGZ)  
TAKEOFF MINIMUMS AND (OBSTACLE)  
DEPARTURE PROCEDURES  
ORIG 13290 (FAA)

TAKEOFF MINIMUMS: **Rwys 14, 32**, NA-Environmental.

TAKEOFF OBSTACLE NOTES: **Rwy 39**, vehicles on roadway beginning 629' from DER, 162' right of centerline, up to 15' AGL/1485' MSL. Trees beginning 700' from DER, 227' right of centerline, up to 49' AGL/1514' MSL. Trees beginning 727' from DER, 532' left of centerline, up to 44' AGL/1508' MSL. Building and pole beginning 781' from DER, 416' left of centerline, up to 26' AGL/1491' MSL. Trees beginning 881' from DER, 229' right of centerline, up to 40' AGL/1505' MSL. Tree 1239' from DER, 558' left of centerline, 36' AGL/1501' MSL. **Rwy 27**, terrain 13' from DER, 371' right of centerline, 1478 MSL. Vehicles on roadway beginning 338' from DER, 556' right of centerline, up to 15' AGL/1494' MSL. Tree 939' from DER, 462' left of centerline, 32' AGL/1509' MSL. Trees beginning 1331' from DER, 409' right of centerline, up to 53' AGL/1530' MSL.

**WAHPETON, ND**

HARRY STERN (BWP)  
TAKEOFF MINIMUMS AND (OBSTACLE)  
DEPARTURE PROCEDURES  
AMDT 1 11181 (FAA)

TAKEOFF MINIMUMS: **Rwys 3,21**, NA - environmental.  
TAKEOFF OBSTACLE NOTES: **Rwy 15**, trees beginning 1020' from DER, 114' left of centerline, up to 74' AGL/1033' MSL. Trees beginning 2753' from DER, 457' right of centerline, up to 86' AGL/1045' MSL. **Rwy 33**, electrical system 657' from DER, 632' right of centerline, 71' AGL/1010' MSL. Trees beginning 714' from DER, 33' right of centerline, up to 70' AGL/1039' MSL. Electrical system 1570' from DER, 258' right of centerline, 68' AGL/1032' MSL. Trees beginning 1326' from DER, 15' left of centerline, up to 75' AGL/1039' MSL.

**WALHALLA, ND**

WALHALLA MUNI (96D)  
TAKEOFF MINIMUMS AND (OBSTACLE)  
DEPARTURE PROCEDURES  
ORIG 11125 (FAA)

TAKEOFF MINIMUMS: **Rwy 15**, 400-234 or std. w/min. climb gradient of 260' per NM to 1500.  
DEPARTURE PROCEDURE: **Rwy 15**, Climb heading 164° to 1500 before turning right.

TAKEOFF OBSTACLE NOTES: **Rwy 15**, vehicles on roadway beginning 478' from DER, 583' right of centerline, 15' AGL/969' MSL. Trees beginning 734' from DER, 623' right to 708' left of centerline, up to 100' AGL/1054' MSL. **Rwy 33**, trees beginning 53' from DER, 12' left to 654' right of centerline, up to 100' AGL/1 049' MSL. Power lines beginning 81' from DER, 266' left of centerline, up to 70' AGL/1019' MSL. Vehicles on roadway beginning 113' from DER, 490' left of centerline, 15' AGL/964' MSL.

17229



# TAKEOFF MINIMUMS, (OBSTACLE) DEPARTURE PROCEDURES, AND

## DIVERSE VECTOR AREA (RADAR VECTORS)



# TAKEOFF MINIMUMS, (OBSTACLE) DEPARTURE PROCEDURES, AND DIVERSE VECTOR AREA (RADAR VECTORS)



17229

## WALKER, MN

### WALKER MUNI (Y49)

TAKEOFF MINIMUMS AND (OBSTACLE)  
DEPARTURE PROCEDURES  
ORIG 14093 (FAA)

TAKEOFF MINIMUMS: **Rwy 33**, 300-1¼ or std. w/min. climb of 235' per NM to 1600, or alternatively, with standard takeoff minimums and a normal 200' per NM climb gradient, takeoff must occur no later than 1800' prior to DER.

TAKEOFF OBSTACLE NOTES: **Rwy 15**, terrain beginning 1' from DER, 1' right of centerline crossing left of centerline, 1408' MSL. Lights 38' from DER, 76' left and right of centerline, 2' AGL/1348' MSL. Trees beginning 220' from DER, 466' right of centerline, up to 50' AGL/1396' MSL. Trees beginning 330 from DER, 408' left of centerline, up to 38' AGL/1384' MSL. Trees beginning 453' from DER, 400' left and right crossing centerline, up to 48' AGL/1453' MSL. **Rwy 33**, lights 38' from DER, 77' left and right of centerline, 3' AGL/1348' MSL. Terrain beginning 84' from DER, 37' left and right of centerline, 1418' MSL. Vehicle on road 250' from DER, 455' right of centerline, 15' AGL/1360' MSL. Tree 328' from DER, 200' right of centerline, 6' AGL/1354' MSL. Trees beginning 420' from DER, 370' left of centerline, up to 55' AGL/1388' MSL. Trees beginning 903' from DER, 19' right and left of centerline, up to 39' AGL/1392' MSL. Trees beginning 2213' from DER, 100' left and right crossing centerline, up to 72' AGL/1404' MSL. Terrain beginning 2916' from DER, 20' left and right of centerline, 1503' MSL. Trees beginning 3597' from DER, 400' left and right crossing centerline, up to 128' AGL/1509' MSL.

## WARREN, MN

### WARREN MUNI (D37)

TAKEOFF MINIMUMS AND (OBSTACLE)  
DEPARTURE PROCEDURES  
ORIG-A 15008 (FAA)

TAKEOFF MINIMUMS: **Rwys 4,22**, NA - environmental. DEPARTURE PROCEDURE: **Rwy 30**, climb runway heading to 1400 before turning on course.

TAKEOFF OBSTACLE NOTES: **Rwy 12**, trees beginning 379' from DER, 306' left of centerline, up to 86' AGL/973' MSL. Light support structure 3' from DER, 17' right of centerline, 2' AGL/888' MSL. Trees beginning 926' from DER, left and right of centerline, up to 71' AGL/955' MSL. **Rwy 30**, trees beginning 30' from DER, 86' right of centerline, up to 15' AGL/904' MSL. Trees, poles and antenna beginning 331' from DER, 373' right of centerline, up to 62' AGL/948' MSL. Trees and bush beginning 51' from DER, 36' left of centerline, up to 68' AGL/954' MSL. Vehicles on road beginning 233' from DER, 179' right of centerline, up to 15' AGL/906' MSL.

## WARROAD, MN

### WARROAD INTL MEMORIAL (RRT)

TAKEOFF MINIMUMS AND (OBSTACLE)  
DEPARTURE PROCEDURES  
ORIG-A 16175 (FAA)

TAKEOFF MINIMUMS: **Rwys 4, 22**, NA-Environmental. TAKEOFF OBSTACLE NOTES: **Rwy 13**, pole 148' from DER, 471' right of centerline, 24' AGL/1093' MSL.

## WASECA, MN

### WASECA MUNI (ACQ)

TAKEOFF MINIMUMS AND (OBSTACLE)  
DEPARTURE PROCEDURES  
ORIG 09015 (FAA)

TAKEOFF OBSTACLE NOTES: **Rwy 15**, tree 560' from DER, 560' right of centerline, 100' AGL/1239' MSL. Terrain beginning 172' from DER, on centerline, up to 1149' MSL. **Rwy 33**, tree 5042' from DER, 1533' right of centerline, 100' AGL/1259' MSL.

## WATERTOWN, SD

### WATERTOWN RGNL (ATY)

TAKEOFF MINIMUMS AND (OBSTACLE)  
DEPARTURE PROCEDURES  
ORIG-A 16147 (FAA)

TAKEOFF OBSTACLE NOTES: **Rwy 30**, light 10' from DER, 30' left of centerline, 1' AGL/1749' MSL. Light 11' from DER, 30' right of centerline, 1' AGL/1749' MSL. Tree, 2091' from DER, 34' right of centerline, 100' AGL/1806' MSL. Tree 2241' from DER, 812' left of centerline, 100' AGL/1805' MSL. **Rwy 35**, sign , 102' from DER, 4' left of centerline, 10' AGL/1750' MSL.

## WATFORD CITY, ND

### WATFORD CITY MUNI (S25)

TAKEOFF MINIMUMS AND (OBSTACLE)  
DEPARTURE PROCEDURES  
AMDT 1 10154 (FAA)

TAKEOFF MINIMUMS: **Rwy 12**, 400-1¼ or std. with a min. climb of 462' per NM to 2600. **Rwys 18, 36**, NA-Environmental.

TAKEOFF OBSTACLE NOTES: **Rwy 12**, tree 5528' from DER, 1819' right of centerline, up to 100' AGL/2439' MSL. Vehicle on road, trees, and terrain beginning 186' from DER, 62' right of centerline, up to 100' AGL/2258' MSL. Vehicle on road, fence, and terrain beginning 90' from DER, 43' left of centerline, up to 27' AGL/2167' MSL. **Rwy 30**, trees and buildings beginning 672' from DER, 119' right of centerline, up to 41' AGL/2101' MSL. Vehicle on road, light and trees beginning 199' from DER, 128' left of centerline, up to 59' AGL/2119' MSL.

## WHEATON, MN

### WHEATON MUNI (ETH)

TAKEOFF MINIMUMS AND (OBSTACLE)  
DEPARTURE PROCEDURES  
AMDT 1 92177 (FAA)

TAKEOFF MINIMUMS: **Rwy 16**, 300-1. **Rwys 4, 22**, NA.

17 AUG 2017 to 14 SEP 2017

17 AUG 2017 to 14 SEP 2017

17229



# TAKEOFF MINIMUMS, (OBSTACLE) DEPARTURE PROCEDURES, AND DIVERSE VECTOR AREA (RADAR VECTORS)



**TAKEOFF MINIMUMS, (OBSTACLE) DEPARTURE PROCEDURES, AND**

17229

**DIVERSE VECTOR AREA (RADAR VECTORS)****WILLISTON, ND**

SLOUFIN FIELD INTL (ISN)

TAKEOFF MINIMUMS AND (OBSTACLE)

DEPARTURE PROCEDURES

AMDT 5 15232 (FAA)

TAKEOFF MINIMUMS: **Rwy 29**, 300-2 or std. w/min. climb of 359' per NM to 2400.DEPARTURE PROCEDURE: **Rwy 11**, climb heading 115° to 2400 before turning left.

TAKEOFF OBSTACLE NOTES: **Rwy 2**, poles beginning 973' from DER, 258' left of centerline, up to 40' AGL/1953' MSL. **Rwy 20**, bldg 1811' from DER, 371' right of centerline, 65' AGL/1980' MSL. Pole 1346' from DER, 69' right of centerline, 44' AGL/1954' MSL. **Rwy 29**, rising terrain 639' from DER, 301' left of centerline, up to 2001' MSL. Rising terrain 645' from DER, 305' right of centerline, up to 2000' MSL. Fences beginning 966' from DER, 250' left of centerline, up to 7' AGL/2029' MSL. NAVIAID 999' from DER, on centerline, 14' AGL/2104' MSL. Buildings beginning 1000' from DER, 270' right of centerline, up to 27' AGL/2040' MSL. Fence 1341' from DER, 210' right of centerline, 21' AGL/2021' MSL. Rising terrain beginning 1965' from DER, 459' right of centerline, up to 2071' MSL. Building 2345' from DER, 519' left of centerline, 5' AGL/2066' MSL. Rising terrain beginning 2531' from DER, 733' left of centerline, up to 2092' MSL. Rising terrain and t-tower beginning 3479' from DER, 248' right of centerline, up to 77' AGL/2137' MSL. Rising terrain and t-tower beginning 3693' from DER, 179' left of centerline, up to 82' AGL/2150' MSL. T-1 towers and tree beginning 5861' from DER, 35' right of centerline, up to 74' AGL/2226' MSL.

**WINDOM, MN**

WINDOM MUNI (MWM)

TAKEOFF MINIMUMS AND (OBSTACLE)

DEPARTURE PROCEDURES

ORIG 10322 (FAA)

TAKEOFF MINIMUMS: **Rwy 35**, 200-1½ or std. w/ min. climb of 225' per NM to 1700, or alternatively, with std. takeoff minimums and a normal 200' per NM climb gradient, takeoff must occur no later than 1700' prior to DER.

TAKEOFF OBSTACLE NOTES: **Rwy 17**, trees beginning 1074' from DER, 461' right of centerline, up to 100' AGL/1409' MSL. **Rwy 35**, trees beginning 1.1 NM from DER, 2057' right of centerline, up to 100' AGL/1599' MSL.

**WILLMAR, MN**

WILLMAR MUNI-JOHN L. RICE FIELD

(BDH)

TAKEOFF MINIMUMS AND (OBSTACLE)

DEPARTURE PROCEDURES

ORIG 06327 (FAA)

TAKEOFF OBSTACLE NOTES: **Rwy 31**, tree 1338' from DER, 740' left of centerline, 67' AGL/1193' MSL.

**WINNER, SD**

WINNER RGNL (ICR)

TAKEOFF MINIMUMS AND (OBSTACLE)

DEPARTURE PROCEDURES

AMDT 4 16203 (FAA)

TAKEOFF MINIMUMS: **Rwy 3**, 21, NA-Environmental.

**WINONA, MN**

WINONA MUNI-MAX CONRAD FIELD (ONA)

TAKEOFF MINIMUMS AND (OBSTACLE)

DEPARTURE PROCEDURES

AMDT 5A 17173 (FAA)

TAKEOFF MINIMUMS: **Rwy 30**, 700-2¾ w/min. climb of 318' per NM to 1700 or std. w/min. climb of 454' per NM to 1300 or 1400-2¾ for VCOA.

DEPARTURE PROCEDURE: **Rwy 12**, climb heading 110° to 1900 before turning. **Rwy 30**, climb heading 300° to 1400 before turning.

VCOA: **Rwy 30**, obtain ATC approval for VCOA when requesting IFR clearance. Climb in visual conditions to cross Winona Muni-Max Conrad Field at or above 1900 before proceeding on course.

TAKEOFF OBSTACLE NOTES: **Rwy 12**, fence beginning 89' from DER, 102' right of centerline, 5' AGL/660' MSL. Trees beginning 958' from DER, left and right of centerline, up to 87' AGL/737' MSL. **Rwy 30**, trees beginning 789' from DER, 28' right of centerline, 104' AGL/758' MSL. Tree 56' from DER, 431' left of centerline, 12' AGL/666' MSL.

**WORTHINGTON, MN**

WORTHINGTON MUNI (OTG)

TAKEOFF MINIMUMS AND (OBSTACLE)

DEPARTURE PROCEDURES

AMDT 3 13010 (FAA)

TAKEOFF MINIMUMS: **Rwy 18**, 300-1½ or std. w/min. climb of 233' per NM to 1900, or alternately, with standard takeoff minimums and a normal 200' per NM climb gradient, takeoff must occur no later than 2100' prior to DER.

DEPARTURE PROCEDURE: **Rwy 29**, climb heading 293° to 2100 before turning left.

TAKEOFF OBSTACLE NOTES: **Rwy 18**, REIL beginning 34' from DER, 78' left of centerline, 4' AGL/1577' MSL. VOR/DME 1201' from DER, 432' left of centerline, 35' AGL/1606' MSL. Pole 7390' from DER, 1989' left of centerline, 195' AGL/1781' MSL. REIL beginning 34' from DER, 78' right of centerline, 4' AGL/1577' MSL. Poles beginning 455' from DER, 530' right of centerline, up to 39' AGL/1610' MSL. Building 703' from DER, 627' right of centerline, 20' AGL/1611' MSL. **Rwy 29**, vehicles on road beginning 106' from DER, 258' left of centerline, up to 18' AGL/1587' MSL. Trees beginning 1083' from DER, 475' left of centerline, up to 56' AGL/1625' MSL. Terrain beginning 17' from DER, 2' right of centerline, 1574' MSL. **Rwy 36**, light support structure 10' from DER, 18' left of centerline, 3' AGL/1574' MSL. Light support structure 10' from DER, 17' right of centerline, 3' AGL/1574' MSL.

**YANKTON, SD**

CHAN GURNEY MUNI (YKN)

TAKEOFF MINIMUMS AND (OBSTACLE)

DEPARTURE PROCEDURES

AMDT 2 85003 (FAA)

TAKEOFF MINIMUMS: **Rwy 31**, 300-1.

DEPARTURE PROCEDURE: **Rwys 1, 13, 19, 31**, climb runway heading to 2400 before turning.

17229

**TAKEOFF MINIMUMS, (OBSTACLE) DEPARTURE PROCEDURES, AND****DIVERSE VECTOR AREA (RADAR VECTORS)**