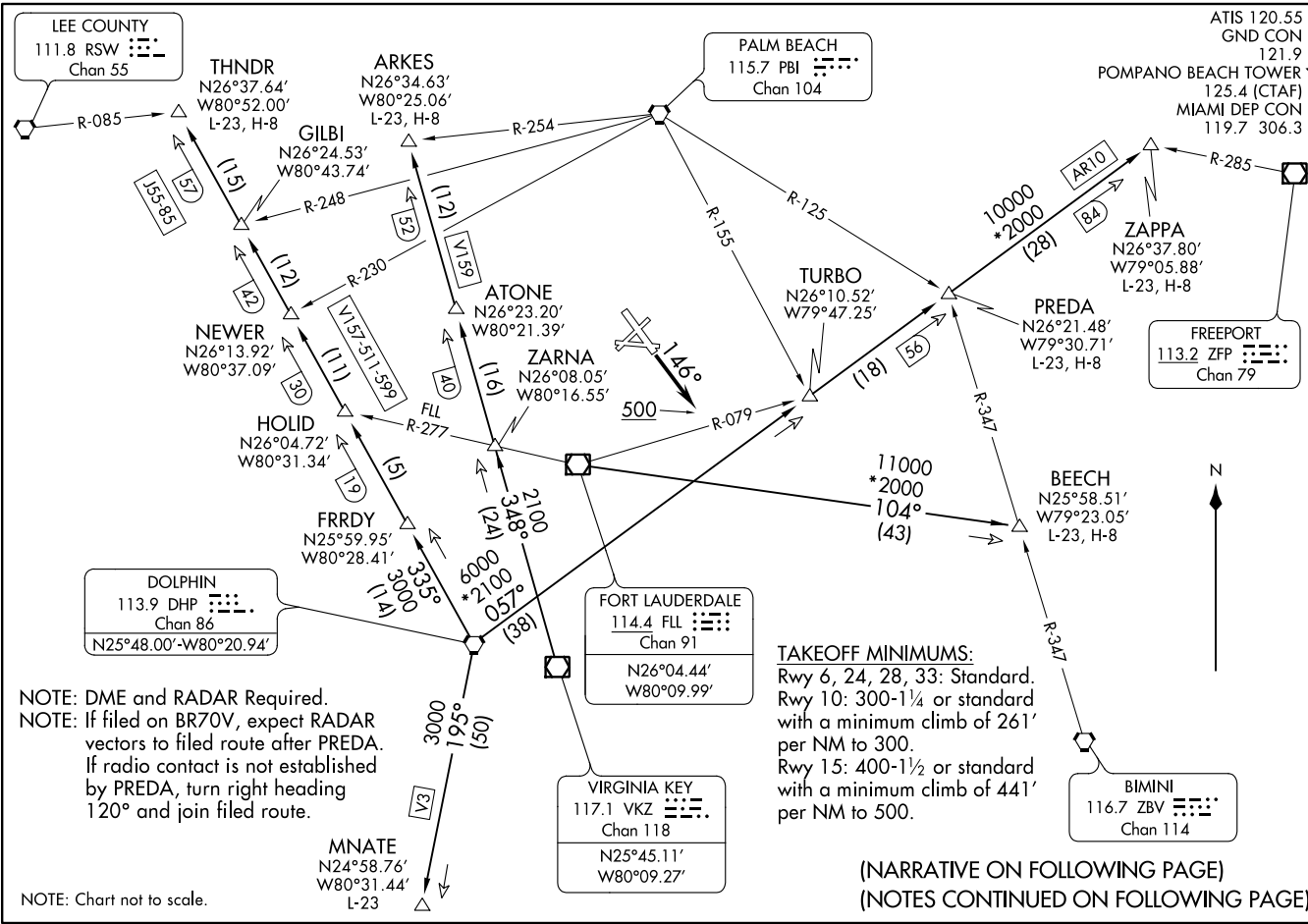


(FL5.FLL) 14289

FORT LAUDERDALE FIVE DEPARTURE

POMPANO BEACH, FLORIDA
POMPANO BEACH AIRPARK (PMP)



NOTE: DME and RADAR Required.
NOTE: If filed on BR70V, expect RADAR vectors to filed route after PREDa. If radio contact is not established by PREDa, turn right heading 120° and join filed route.

NOTE: Chart not to scale.

TAKEOFF MINIMUMS:
Rwy 6, 24, 28, 33: Standard.
Rwy 10: 300-1¼ or standard with a minimum climb of 261' per NM to 300.
Rwy 15: 400-1½ or standard with a minimum climb of 441' per NM to 500.

(NARRATIVE ON FOLLOWING PAGE)
(NOTES CONTINUED ON FOLLOWING PAGE)

(FL5.FLL) 14289

SI-5972 (FAA)

FORT LAUDERDALE FIVE DEPARTURE

POMPANO BEACH AIRPARK (PMP)
POMPANO BEACH, FLORIDA

FORT LAUDERDALE FIVE DEPARTURE



DEPARTURE ROUTE DESCRIPTION

TAKEOFF RWY 6, 10, 24, 28, 33: Climb on assigned heading. Thence . . .

TAKEOFF RWY 15: Climb heading 146° to 500, then climb on assigned heading. Thence . . .

. . . Maintain 2000 or higher assigned altitude and expect radar vectors to appropriate transition. Expect further clearance to filed altitude ten (10) minutes after departure.

ARKES TRANSITION (FLL5.ARKES): From over VKZ VOR/DME on VKZ R-348 to ARKES INT.

BEECH TRANSITION (FLL5.BEECH): From over FLL VOR/DME on FLL R-104 to BEECH INT.

MNATE TRANSITION (FLL5.MNATE): From over DHP VORTAC on DHP R-195 to MNATE.

PREDA TRANSITION (FLL5.PREDA): From over DHP VORTAC on DHP R-057 to PREDA INT.

THNDR TRANSITION (FLL5.THNDR): From over DHP VORTAC on DHP R-335 to THNDR INT.

ZAPPA TRANSITION (FLL5.ZAPPA): From over DHP VORTAC on DHP R-057 to ZAPPA INT.

TAKEOFF OBSTACLE NOTES:

Rwy 6: Trees beginning 101' from DER, 26' left and 232' right of centerline, up to 70' AGL/84' MSL.

Rwy 10: Pole 154' from DER, 131' left of centerline, 9' AGL/18' MSL. Trees, pole, and building beginning 427' from DER, 12' left and 343' right of centerline, up to 49' AGL/63' MSL. Poles and building beginning 1264' from DER, 166' left and 286' right of centerline, up to 64' AGL/72' MSL. Building 5670' from DER, 604' right of centerline, 186' AGL/190' MSL. Buildings 1 NM from DER, 887' left of centerline, up to 201' AGL/210' MSL.

Rwy 15: Building, trees, and poles beginning 502' from DER, 306' left and 434' right of centerline, 44' AGL/54' MSL. Trees beginning 1229' from DER, 152' left and 190' right of centerline, up to 71' AGL/62' MSL. Building 5994' from DER, 1491' left of centerline, 213' AGL/221' MSL. Building 1.1 NM from DER, 1259' left of centerline, 300' AGL/310' MSL. Building 1.7 NM from DER, 1385' right of centerline, 255' AGL/265' MSL.

Rwy 24: Trees beginning 190' from DER, 304' right of centerline, up to 30' AGL/49' MSL. Trees beginning 423' from DER, 3' left of centerline, up to 47' AGL/66' MSL. Tanks, building, tree, and pole beginning 630' from DER, 23' right of centerline, 60' AGL/80' MSL. Trees beginning 2179' from DER, 253' left of centerline, up to 91' AGL/110' MSL.

Rwy 28: Trees beginning 358' from DER, 255' left of centerline, up to 25' AGL/44' MSL. Poles, building, trees, and tank beginning 722' from DER, 33' left and 238' right of centerline, up to 45' AGL/64' MSL.

Rwy 33: Trees and building beginning 135' from DER, 378' left of centerline and 458' right of centerline, up to 37' AGL/56' MSL. Trees beginning 799' from DER, 157' left of centerline, up to 59' AGL/78' MSL.

SE-3, 08 JAN 2015 to 05 FEB 2015

SE-3, 08 JAN 2015 to 05 FEB 2015