

WAAS CH <b>78304</b> <b>W21A</b>	APP CRS <b>206°</b>	Rwy Idg <b>5001</b> TDZE <b>485</b> Apt Elev <b>485</b>
--	------------------------	--

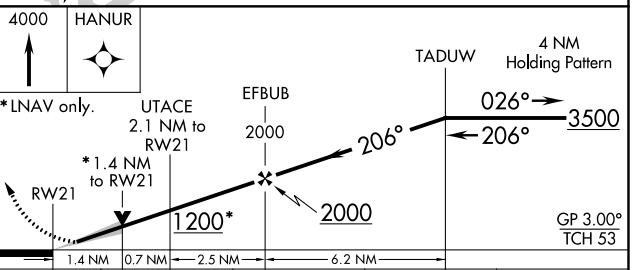
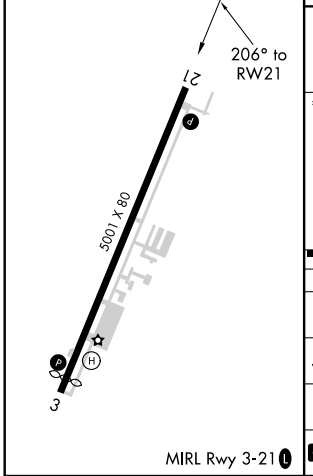
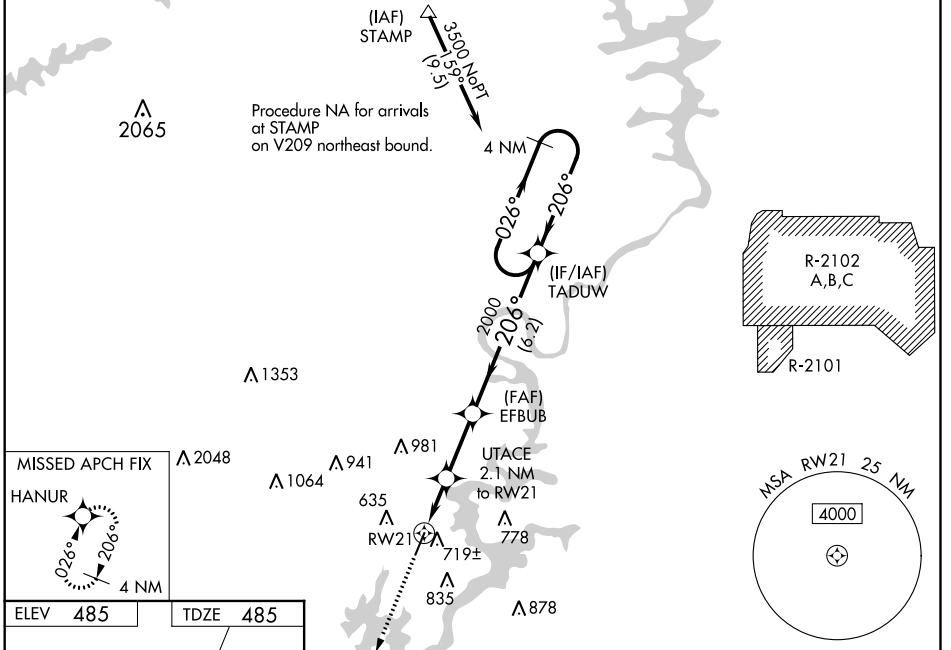
# RNAV (GPS) RWY 21

ST CLAIR COUNTY (PLR)

**⚠** **⚠** DME/DME RNP-0.3 NA. When local altimeter setting not received, use Anniston altimeter setting and increase LPV DA to 799 feet and all Cats visibility to 1, increase LNAV/VNAV DA to 964 feet and all visibilities to 1½, increase all MDA 80 feet and LNAV Cat C/D to 1½ and Circling Cat C to 2½ and Cat D to 3. For uncompensated Baro-VNAV systems, LNAV/VNAV NA below -15°C (5°F) or above 54°C (130°F). Baro-VNAV and VDP NA when using Anniston altimeter setting.

**MISSED APPROACH:**  
Climb to 4000 direct HANUR and hold, continue climb-in-hold to 4000.

AWOS-3P <b>119.625</b>	BIRMINGHAM APP CON <b>123.8 256.8</b>	GCO <b>121.725</b>	UNICOM <b>123.05</b> (CTAF) <b>📻</b>
---------------------------	--	-----------------------	---



CATEGORY	A	B	C	D
LPV DA		735-¾	250 (300-¾)	
LNAV/VNAV DA		900-1¾	415 (500-1¾)	
LNAV MDA	980-1	495 (500-1)	980-1¾	495 (500-1¾)
<b>CIRCLING</b>	1180-1	695 (700-1)	1240-2¼ 755 (800-2¼)	1340-2¾ 855 (900-2¾)

SE-4, 14 SEP 2017 to 12 OCT 2017

SE-4, 14 SEP 2017 to 12 OCT 2017

WAAS CH <b>70540</b> <b>W03A</b>	APP CRS <b>026°</b>	Rwy Idg TDZE Apt Elev <b>4771</b> <b>484</b> <b>485</b>
--	------------------------	--

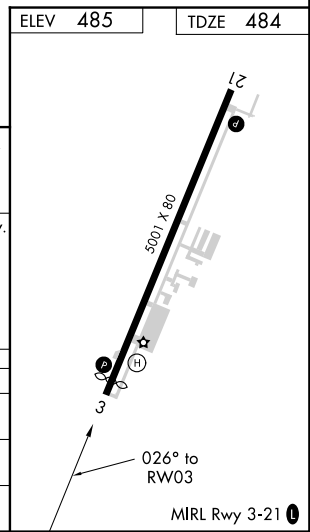
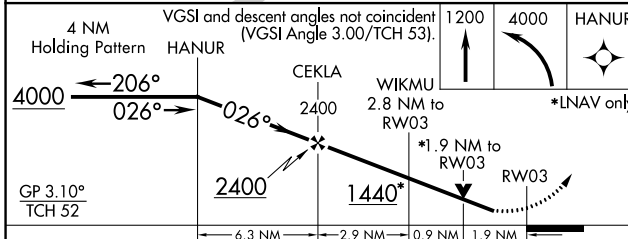
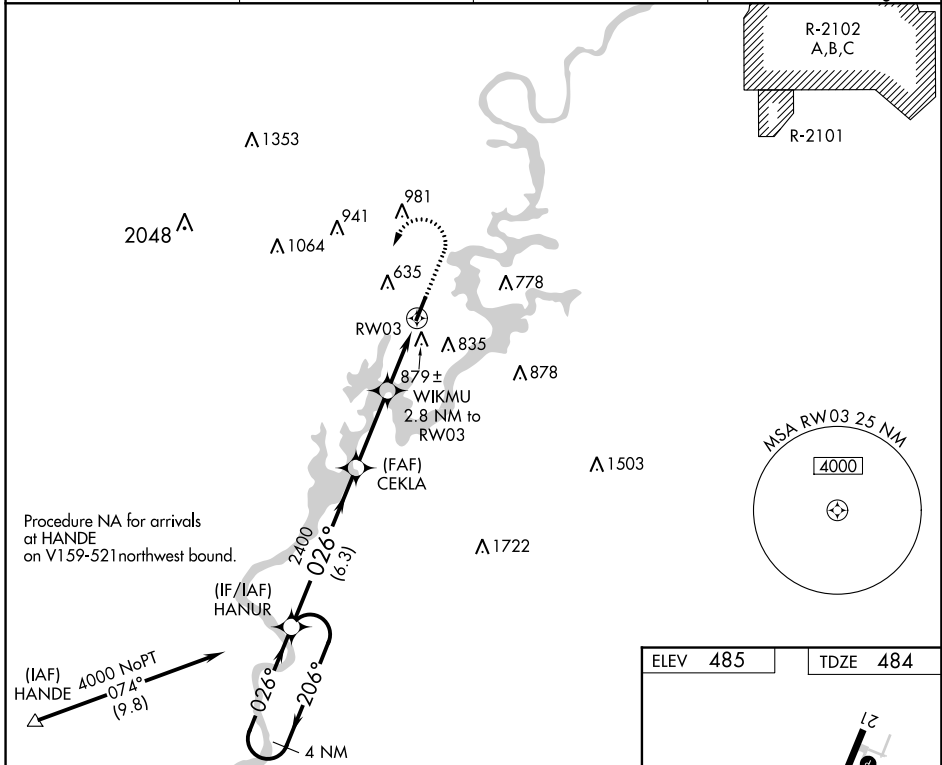
# RNAV (GPS) RWY 3

ST CLAIR COUNTY (PLR)

**⚠** DME/DME RNP-0.3 NA. VDP NA when using Anniston altimeter setting. Rwy 3, helicopter visibility reduction below 3/4 SM NA. When local altimeter setting not received, use Anniston altimeter setting and increase all DA 63 feet and all visibility 1/4 SM, increase all MDA 80 feet and LNAV Cat C/D visibility 1/8 SM and Circling Cat C/D 1/4 SM.

**MISSED APPROACH:** Climb to 1200, then climbing left turn to 4000 direct HANUR and hold, continue climb-in-hold to 4000.

AWOS-3P <b>119.625</b>	BIRMINGHAM APP CON <b>123.8 256.8</b>	GCO <b>121.725</b>	UNICOM <b>123.05 (CTAF) 0</b>
---------------------------	--	-----------------------	----------------------------------



CATEGORY	A	B	C	D
LPV DA		835-1 1/8	351 (400-1 1/8)	
LNAV MDA	1140-1	656 (700-1)	1140-1 7/8	656 (700-1 1/8)
<b>C</b> CIRCLING	1180-1	695 (700-1)	1240-2 1/4 755 (800-2 1/4)	1340-2 3/4 855 (900-2 3/4)

SE-4, 14 SEP 2017 to 12 OCT 2017

SE-4, 14 SEP 2017 to 12 OCT 2017