

WAAS CH 78304 W21A	APP CRS 205°	Rwy Idg 5001 TDZE 485 Apt Elev 485
--	------------------------	---

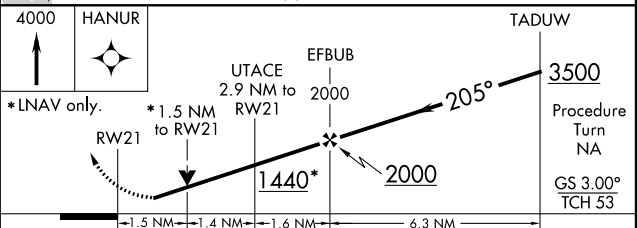
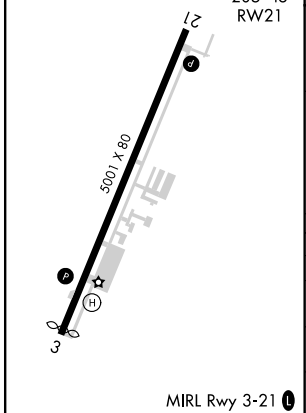
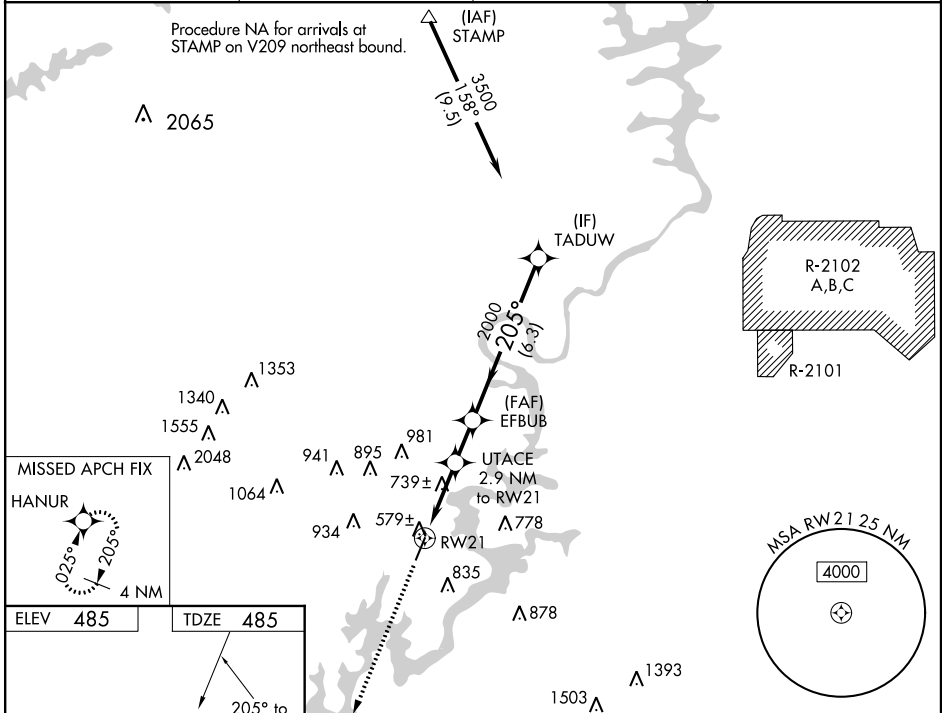
RNAV (GPS) RWY 21

PELL CITY/ST CLAIR COUNTY (P.L.R.)

⚠ DME/DME RNP-0.3 NA. Helicopter visibility reduction below ¾ SM NA. When local altimeter setting not received, use Anniston altimeter setting and increase LPV and LNAV/VNAV DA 64 feet and all MDA 80 feet. Increase LPV and LNAV/VNAV all Cats, and Circling Cats B/C/D visibility ¼ mile. For uncompensated Baro-VNAV system, LNAV/VNAV NA below -15°C (5°F) or above 54°C (130°F). Baro-VNAV and VDP NA when using Anniston altimeter setting. Circling to Rwy 3 NA at night.

⚠ NA MISSED APPROACH: Climb to 4000 direct HANUR and hold, continue climb-in-hold to 4000.

AWOS-3 119.625	BIRMINGHAM APP CON 123.8 381.5	GCO 121.725	UNICOM 123.05 (CTAF) 📻
--------------------------	--	-----------------------	---



CATEGORY	A	B	C	D
LPV DA		787-1	302 (400-1)	
LNAV/VNAV DA		958-1¾	473 (500-1¾)	
LNAV MDA	1000-1	515 (600-1)	1000-1½ 515 (600-1½)	1000-1¾ 515 (600-1¾)
CIRCLING	1180-1	695 (700-1)	1180-2 695 (700-2)	1180-2½ 695 (700-2½)

SE-4, 08 JAN 2015 to 05 FEB 2015

SE-4, 08 JAN 2015 to 05 FEB 2015

APP CRS	Rwy ldg	4951
025°	TDZE	483
	Apt Elev	485

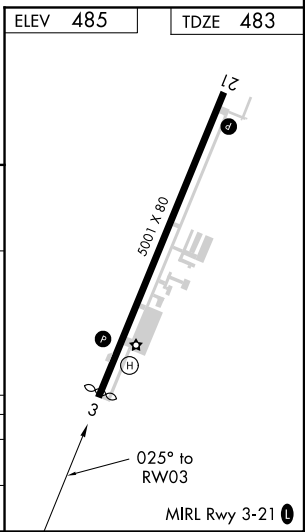
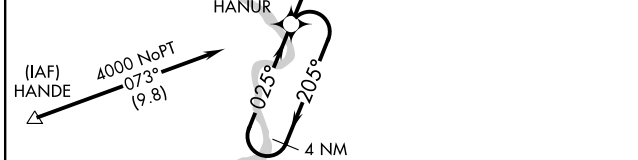
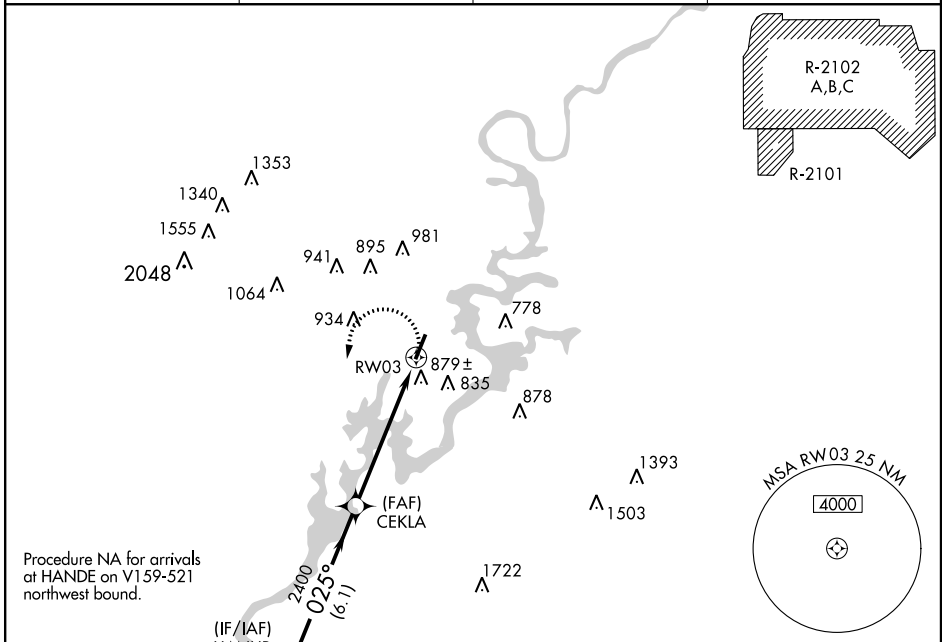
RNAV (GPS) RWY 3

PELL CITY/ST CLAIR COUNTY (P.L.R.)

⚠ DME/DME RNP-0.3 NA. Helicopter visibility reduction below 1 SM NA.
⚠ NA When local altimeter setting not received, use Anniston altimeter setting and increase all MDA 80 feet. Increase LNAV Cat C/D and Circling Cats B/C/D, visibility ¼ mile. Rwy 3 Straight-in and Circling minimums NA at night.

MISSED APPROACH: Climbing left turn to 4000 direct HANUR and hold, continue climb-in-hold to 4000.

AWOS-3 119.625	BIRMINGHAM APP CON 123.8 381.5	GCO 121.725	UNICOM 123.05 (CTAF) 📻
--------------------------	--	-----------------------	---



CATEGORY	A	B	C	D
LNAV MDA	1140-1	657 (700-1)	1140-1¼ 657 (700-1¼)	1140-2 657 (700-2)
CIRCLING	1180-1	695 (700-1)	1180-2 695 (700-2)	1180-2¼ 695 (700-2¼)

SE-4, 08 JAN 2015 to 05 FEB 2015

SE-4, 08 JAN 2015 to 05 FEB 2015

TAKEOFF MINIMUMS, (OBSTACLE) DEPARTURE PROCEDURES, AND DIVERSE VECTOR AREA (RADAR VECTORS)

15008

INSTRUMENT APPROACH PROCEDURE CHARTS



IFR TAKEOFF MINIMUMS AND (OBSTACLE) DEPARTURE PROCEDURES

Civil Airports and Selected Military Airports

ALL USERS: Airports that have Departure Procedures (DPs) designed specifically to assist pilots in avoiding obstacles during the climb to the minimum enroute altitude, and/or airports that have civil IFR takeoff minimums other than standard, are listed below. Takeoff Minimums and Departure Procedures apply to all runways unless otherwise specified. Altitudes, unless otherwise indicated, are minimum altitudes in MSL.

DPs specifically designed for obstacle avoidance are referred to as Obstacle Departure Procedures (ODPs) and are textually described below, or published separately as a graphic procedure. If the ODP is published as a graphic procedure, its name will be listed below, and it can be found in either this volume (civil), or the applicable minimum volume, as appropriate. Users will recognize graphic obstacle DPs by the term "(OBSTACLE)" included in the procedure title; e.g., TETON TWO (OBSTACLE). If not specifically assigned an ODP, SID, or radar vector as part of an IFR clearance, an ODP may be required to be flown for obstacle clearance, even though not specifically stated in the IFR clearance. When doing so in this manner, ATC should be informed when the ODP being used contains a specified route to be flown, restrictions before turning, and/or altitude restrictions.

Some ODPs, which are established solely for obstacle avoidance, require a climb in visual conditions to cross the airport, a fix, or a NAVAID in a specified direction, at or above a specified altitude. These procedures are called Visual Climb Over Airport (VCOA). To ensure safe and efficient operations, the pilot must verbally request approval from ATC to fly the VCOA when requesting their IFR clearance.

At some locations where an ODP has been established, a diverse vector area (DVA) may be created to allow radar vectors to be used in lieu of an ODP. DVA information will state that headings will be as assigned by ATC and climb gradients, when applicable, will be published immediately following the specified departure procedure.

Graphic DPs designed by ATC to standardize traffic flows, ensure aircraft separation and enhance capacity are referred to as "Standard Instrument Departures (SIDs)". SIDs also provide obstacle clearance and are published under the appropriate airport section. ATC clearance must be received prior to flying a SID.

CIVIL USERS NOTE: Title 14 Code of Federal Regulations Part 91 prescribes standard takeoff rules and establishes takeoff minimums for certain operators as follows: (1) Aircraft having two engines or less - one statute mile. (2) Aircraft having more than two engines - one-half statute mile. These standard minima apply in the absence of any different minima listed below.

MILITARY USERS NOTE: Civil (nonstandard) takeoff minima are published below. For military takeoff minima, refer to appropriate service directives.

NAME	TAKEOFF MINIMUMS
------	------------------

NAME	TAKEOFF MINIMUMS
------	------------------

ADEL, GA

COOK COUNTY (15J)

TAKEOFF MINIMUMS AND (OBSTACLE) DEPARTURE PROCEDURES

AMDT 1 07242 (FAA)

DEPARTURE PROCEDURE: **Rwy 5**, climb heading 051° to 1500 before proceeding on course.

NOTE: **Rwy 5**, multiple trees and vehicles beginning 411' from DER, 16' left of centerline, up to 100' AGL/349' MSL. Multiple trees and vehicles beginning 159' from DER, 18' right of centerline, up to 100' AGL/349' MSL. **Rwy 15**, multiple trees beginning 1801' from DER, 629' left of centerline, up to 100' AGL/339' MSL. Multiple trees beginning 932' from DER, 437' right of centerline, up to 100' AGL/339' MSL. **Rwy 23**, multiple trees beginning 503' from DER, 178' left of centerline, up to 72' AGL/321' MSL. Multiple trees beginning 1058' from DER, 74' right of centerline, up to 73' AGL/312' MSL. **Rwy 33**, multiple trees beginning 4793' from DER, 120' left of centerline, up to 100' AGL/349' MSL. Multiple trees beginning 4990' from DER, 761' right of centerline, up to 100' AGL/349' MSL.

ALABASTER, AL

SHELBY COUNTY (EET)

TAKEOFF MINIMUMS AND (OBSTACLE) DEPARTURE PROCEDURES

AMDT 3 09071 (FAA)

TAKEOFF MINIMUMS: **Rwy 16**, 300-1¼. **Rwy 34**, 300-1 w/ min. climb of 310' per NM to 1500, or 1000-2½ for climb in visual conditions.

DEPARTURE PROCEDURE: **Rwy 34**, for climb in visual conditions: Cross Shelby County Airport at or above 1400 MSL before proceeding on course.

NOTE: **Rwy 16**, rising terrain beginning 30' from DER. Trees beginning 4' from DER, 648' left to 826' right of centerline, up to 100' AGL/759' MSL. T-L towers beginning 1165' from DER, 490' left of centerline, up to 98' AGL/704' MSL. Buildings 1569' from DER, 89' left of centerline, up to 38' AGL/657' MSL. **Rwy 34**, rising terrain beginning 132' from DER. Trees beginning 240' from DER, 1498' left to 3865' right of centerline, up to 100' AGL/799' MSL. T-L towers beginning 1821' from DER, 646' right of centerline, up to 89' AGL/715' MSL. Buildings beginning 1562' from DER, 87' left of centerline up to 31' AGL/661' MSL. Buildings beginning 1863' from DER, 135' right of centerline, up to 45' AGL/668' MSL. Tower 2.08 NM from DER, 513' left of centerline, 220' AGL/919' MSL.

15008

TAKEOFF MINIMUMS, (OBSTACLE) DEPARTURE PROCEDURES, AND DIVERSE VECTOR AREA (RADAR VECTORS)

TAKEOFF MINIMUMS, (OBSTACLE) DEPARTURE PROCEDURES, AND DIVERSE VECTOR AREA (RADAR VECTORS)

15008

ALBANY, GA

SOUTHWEST GEORGIA RGNL (ABY)

TAKEOFF MINIMUMS AND (OBSTACLE)
DEPARTURE PROCEDURES

ORIG 07018 (FAA)

TAKEOFF MINIMUMS: **Rwy 34**, 300-2 or std. w/ min. climb of 255' per NM to 600.

DEPARTURE PROCEDURE: **Rwy 4**, climb heading 044° to 700 before turning left. **Rwy 34**, climb heading 344° to 700 before turning right.

NOTE: **Rwy 4**, multiple trees and tank beginning 913' from DER, 383' left of centerline, up to 127' AGL/329' MSL. Multiple trees beginning 1985' from DER, 797' right of centerline, up to 79' AGL/275' MSL. **Rwy 16**, multiple trees beginning 1044' from DER, 310' left of centerline, up to 59' AGL/253' MSL. Multiple trees beginning 1977' from DER, 81' right of centerline, up to 92' AGL/286' MSL. **Rwy 22**, tree 1461' from DER, 793' left of centerline, 81' AGL/250' MSL. Pole 1093' from DER, 731' left of centerline, 61' AGL/230' MSL. **Rwy 34**, multiple trees beginning 426' from DER, 14' left of centerline up to 82' AGL/277' MSL. Multiple trees beginning 477' from DER, 14' right of centerline, up to 58' AGL/253' MSL.

ALBERTVILLE, AL

ALBERTVILLE RGNL/THOMAS J

BRUMLIK FIELD (8A0)

TAKEOFF MINIMUMS AND (OBSTACLE)
DEPARTURE PROCEDURES

ORIG 07242 (FAA)

NOTE: **Rwy 5**, trees beginning 18' from DER, 353' left of centerline, up to 56' AGL/1088' MSL. Trees beginning 724' from DER, 676' right of centerline, up to 60' AGL/1092' MSL. Poles beginning 12' from DER, 428' left of centerline, up to 24' AGL/1056' MSL. Terrain beginning 30' from DER, 108' left of centerline, 0' AGL/1047' MSL. Terrain 30' from DER, 58' right of centerline, 0' AGL/1050' MSL. **Rwy 23**, trees beginning 47' from DER, 469' right of centerline, up to 14' AGL/1017' MSL. Terrain 36' from DER, 346' right of centerline, 0' AGL/1004' MSL.

ALEXANDER CITY, AL

THOMAS C. RUSSELL FIELD (ALX)

TAKEOFF MINIMUMS AND (OBSTACLE)
DEPARTURE PROCEDURES

AMDT 3 14177 (FAA)

TAKEOFF MINIMUMS: **Rwy 36**, 300-1 or std. w/min. climb of 385' per NM to 1000.

DEPARTURE PROCEDURE: **Rwy 36**, climb heading 002° to 1300 before turning right.

NOTE: **Rwy 18**, rising terrain beginning 6' from DER, 196' right of centerline, up to 613' MSL. Trees and fence beginning 131' from DER, 345' right of centerline, up to 100' AGL/704' MSL. Trees beginning 3233' from DER, 536' right of centerline, up to 100' AGL/693' MSL. Trees beginning 3772' from DER, 1093' left of centerline, up to 100' AGL/723' MSL. **Rwy 36**, poles beginning 165' from DER, 4' right and 109' left of centerline, up to 45' AGL/711' MSL. Rising terrain beginning 94' from DER, 265' right of centerline, up to 708' MSL. Trees and buildings beginning 15' from DER, 443' left of centerline, up to 100' AGL/709' MSL. Trees beginning 324' from DER, 74' right of centerline, up to 100' AGL/741' MSL. Trees, poles and buildings beginning 630' from DER, 3' left of centerline, up to 100' AGL/806' MSL. Trees, poles and sign beginning 667' from DER, 32' right of centerline, up to 100' AGL/747' MSL. Poles, trees, buildings and tank beginning 2336' from DER, 113' left of centerline, up to 137' AGL/860' MSL. Poles beginning 3826' from DER, 164' right of centerline, up to 97' AGL/817' MSL.

ALICEVILLE, AL

GEORGE DOWNER (AIV)

TAKEOFF MINIMUMS AND (OBSTACLE)
DEPARTURE PROCEDURES

ORIG 14093 (FAA)

DEPARTURE PROCEDURE: **Rwy 6**, climb heading 064° to 2000 before turning. **Rwy 24**, climb heading 244° to 2000 before turning.

NOTE: **Rwy 6**, vehicle on road, trees, buildings and power poles abeam DER, left and right of centerline, up to 100' AGL/279' MSL. **Rwy 24**, trees, and power poles abeam DER, left and right of centerline, up to 100' AGL/289' MSL.

ALMA, GA

BACON COUNTY (AMG)

TAKEOFF MINIMUMS AND (OBSTACLE)
DEPARTURE PROCEDURES

ORIG-A 14093 (FAA)

NOTE: **Rwy 15**, trees beginning 11' from DER, 79' left of centerline, up to 67' AGL/267' MSL. Trees beginning 10' from DER, 10' right of centerline, up to 56' AGL/256' MSL. Terrain beginning 40' from DER, 31' left of centerline, up to 200' MSL. **Rwy 33**, poles beginning 39' from DER, 478' right of centerline, up to 24' AGL/236' MSL. Poles and tanks beginning 1094' from DER, 11' right of centerline, up to 58' AGL/258' MSL. Terrain beginning 58' from DER, 399' left of centerline, up to 213' MSL. Buildings beginning 420' from DER, 517' left of centerline, up to 77' AGL/277' MSL. Poles beginning 925' from DER, 324' left of centerline, up to 58' AGL/258' MSL. Trees beginning 128' from DER, 196' left of centerline, up to 94' AGL/294' MSL. Trees beginning 408' from DER, 256' right of centerline, up to 95' AGL/295' MSL. Sign 1158' from DER, 722' left of centerline, 39' AGL/239' MSL.

15008

TAKEOFF MINIMUMS, (OBSTACLE) DEPARTURE PROCEDURES, AND DIVERSE VECTOR AREA (RADAR VECTORS)

**TAKEOFF MINIMUMS, (OBSTACLE) DEPARTURE PROCEDURES, AND
DIVERSE VECTOR AREA (RADAR VECTORS)**

15008

AMERICUS, GA

JIMMY CARTER RGNL (ACJ)
TAKEOFF MINIMUMS AND (OBSTACLE)
DEPARTURE PROCEDURES
AMDT 2A 13206 (FAA)

NOTE: **Rwy 5**, fence 26' from DER, 471' left of centerline, 13' AGL/464' MSL. Trees beginning 179' from DER, left and right of centerline, up to 90' AGL/541' MSL. **Rwy 10**, trees beginning 35' from DER, left and right of centerline, up to 116' AGL/557' MSL. **Rwy 23**, vehicles on roadway abeam DER, 179' left of centerline, up to 15' AGL/481' MSL. Trees beginning 65' from DER, left and right of centerline, up to 92' AGL/537' MSL. Poles beginning 1085' from DER, 310' right of centerline, up to 44' AGL/505' MSL. **Rwy 28**, vehicles on roadway 479' from DER, 619' right of centerline, up to 15' AGL/484' MSL. Trees beginning 2275' from DER, 285' left of centerline, up to 100' AGL/569' MSL.

ANDALUSIA/OPP, AL

SOUTH ALABAMA RGNL AT BILL
BENTON FIELD (79J)
TAKEOFF MINIMUMS AND (OBSTACLE)
DEPARTURE PROCEDURES
AMDT 1 06271 (FAA)

NOTE: **Rwy 11**, multiple trees beginning 379' from DER, 279' left of centerline, up to 59' AGL/368' MSL. Multiple trees beginning 1478' from DER, 687' right of centerline, up to 71' AGL/380' MSL. **Rwy 29**, multiple trees beginning 93' from DER, 490' left of centerline, up to 85' AGL/394' MSL. Multiple trees beginning 40' from DER, 353' right of centerline, up to 66' AGL/375' MSL.

ANNISTON, AL

ANNISTON RGNL (ANB)
TAKEOFF MINIMUMS AND (OBSTACLE)
DEPARTURE PROCEDURES
AMDT 6A 12040 (FAA)

DEPARTURE PROCEDURE: **Rwy 5**, Climbing right turn to intercept TDG VOR/DME R-085 outbound climb to 3000 before proceeding on course. **Rwy 23**, Climb heading 229° to 1300 then turn right direct TDG VOR/DME.

NOTE: **Rwy 5**, tree 1147' from DER, 730' left of centerline, 77' AGL/689' MSL. Sign 2269' from DER, 903' left of centerline, 100' AGL/712' MSL. Bush 493' from DER, 385' left of centerline, 33' AGL/645' MSL. Railroad 197' from DER, 435' left of centerline, 25' AGL/637' MSL. Tree 1965' from DER, 275' left of centerline, 69' AGL/681' MSL. Pole 506' from DER, 549' right of centerline, 24' AGL/636' MSL. **Rwy 23**, tree 4545' from DER, 1238' left of centerline, 79' AGL/717' MSL.

ATHENS, GA

ATHENS/BEN EPPS (AHN)
TAKEOFF MINIMUMS AND (OBSTACLE)
DEPARTURE PROCEDURES
AMDT 1A 08129 (FAA)

DEPARTURE PROCEDURE: **Rwy 2**, climb heading 021° to 2300 before turning West.

NOTE: **Rwy 2**, trees beginning 1168' from DER, 132' left of centerline, up to 90' AGL/870' MSL. Trees beginning 1064' from DER, 18' right of centerline, up to 90' AGL/856' MSL. Light on hangar 161' from DER, 392' left of centerline, 20' AGL/819' MSL. **Rwy 9**, tree 2114' from DER, 565' left of centerline, 100' AGL/824' MSL. Tree 1021' from DER, 674' right of centerline, 121' AGL/820' MSL. **Rwy 20**, trees beginning 964' from DER, 144' left of centerline, up to 86' AGL/856' MSL. Numerous trees and bushes beginning 81' from DER, 89' right of centerline, up to 74' AGL/834' MSL. Rising terrain beginning 85' from DER, 8' right of centerline, to 335' left of centerline, 791' MSL. **Rwy 27**, trees beginning 375' from DER, 385' left of centerline, up to 110' AGL/809' MSL. Trees beginning 106' from DER, 407' right of centerline, up to 63' AGL/803' MSL. Antenna 1023' from DER, 365' left of centerline, 50' AGL/791' MSL.

ATLANTA, GA

ATLANTA RGNL FALCON FIELD (FFC)
TAKEOFF MINIMUMS AND (OBSTACLE)
DEPARTURE PROCEDURES
AMDT 2 11069 (FAA)

TAKEOFF MINIMUMS: **Rwy 31**, 300-1.

NOTE: **Rwy 13**, trees beginning 960' from DER, 51' right of centerline, up to 98' AGL/877' MSL. Trees beginning 377' from DER, 465' left of centerline, up to 88' AGL/887' MSL. **Rwy 31**, trees beginning 288' from DER, 538' right of centerline, up to 100' AGL/999' MSL.

ATLANTA SOUTH RGNL (4A7)
TAKEOFF MINIMUMS AND (OBSTACLE)
DEPARTURE PROCEDURES
AMDT 1 13234 (FAA)

NOTE: **Rwy 6**, vehicles on roadway beginning 308' from DER, 287' right of centerline, up to 17' AGL/896' MSL. Trees beginning 224' from DER, 234' left of centerline, up to 100' AGL/999' MSL. Trees beginning 1467' from DER, left and right of centerline, up to 100' AGL/999' MSL. **Rwy 24**, trees beginning 404' from DER, left and right of centerline, up to 100' AGL/951' MSL.

08 JAN 2015 to 05 FEB 2015

08 JAN 2015 to 05 FEB 2015

15008

**TAKEOFF MINIMUMS, (OBSTACLE) DEPARTURE PROCEDURES, AND
DIVERSE VECTOR AREA (RADAR VECTORS)**

**TAKEOFF MINIMUMS, (OBSTACLE) DEPARTURE PROCEDURES, AND
DIVERSE VECTOR AREA (RADAR VECTORS)**

15008

ATLANTA, GA (CON'T)**COBB COUNTY-MCCOLLUM FIELD (RYY)****TAKEOFF MINIMUMS AND (OBSTACLE)
DEPARTURE PROCEDURES**

AMDT 2 09071 (FAA)

TAKEOFF MINIMUMS: **Rwy 9**, 200-1¼ or std. w/min. climb of 223' per NM to 1400, or alternatively, with standard takeoff minimums and normal 200'/NM climb gradient, takeoff must occur no later than 1800' prior to DER. **Rwy 27**, 300-1¼.

DEPARTURE PROCEDURE: **Rwy 9**, climb heading 093° to 1900 before proceeding south. **Rwy 27**, climb heading 273° to 1600 before proceeding southeast.

NOTE: **Rwy 9**, trees 1048' from DER, 588' left of centerline, up to 99' AGL/1039' MSL. Terrain 27' from DER, 375' right of centerline, 0' AGL/1005' MSL. Trees 1.4 NM from DER, 2561' right of centerline, up to 100' AGL/1239' MSL. **Rwy 27**, multiple vehicles on roads, buildings, railroads, and trees beginning 152' from DER, 17' left of centerline, up to 100' AGL/1179' MSL. Multiple vehicles on roads, buildings, railroads, and trees beginning 262' from DER, 6' right of centerline, up to 100' AGL/1159' MSL. Trees 1.4 NM from DER, 2670' left of centerline, up to 100' AGL/1259' MSL.

COVINGTON MUNI (CVC)**TAKEOFF MINIMUMS AND (OBSTACLE)
DEPARTURE PROCEDURES**

AMDT 2 12320 (FAA)

TAKEOFF MINIMUMS: **Rwy 28**, 200-1 or std. w/min. climb of 259' per NM to 1100.

NOTE: **Rwy 10**, terrain 19' from DER, 485' left of centerline, 817' MSL. Trees beginning 1400' from DER, 301' left of centerline, up to 75' AGL/875' MSL. Pole 988' from DER, 107' right of centerline, 34' AGL/844' MSL. Tree 3903' from DER, 1535' right of centerline, 82' AGL/922' MSL. **Rwy 28**, trees beginning 1066' from DER, 35' left of centerline, up to 115' AGL/ 875' MSL. Trees beginning 2518' from DER, 144' left of centerline, up to 114' AGL/894' MSL. Water tower 5029' from DER, 1580' left of centerline, 168' AGL/961' MSL. Trees beginning 1287' from DER, 435' right of centerline, up to 128' AGL/888' MSL.

ATLANTA, GA (CON'T)**DEKALB-PEACHTREE (PDK)****TAKEOFF MINIMUMS AND (OBSTACLE)
DEPARTURE PROCEDURES**

AMDT 2 13066 (FAA)

TAKEOFF MINIMUMS: **Rwy 3L**, 200-1¼ or std. w/min. climb of 250' per NM to 1300, or alternatively, with standard takeoff minimums and a normal 200' per NM climb gradient, takeoff must occur no later than 2100' prior to DER. **Rwy 3R**, 300-1 or std. w/min. climb of 325' per NM to 1200. **Rwy 21L**, std. w/min. climb of 335' per NM to 2000 or 1200-2¼ for climb in visual conditions. **Rwy 21R**, std. w/min. climb of 325' per NM to 2000 or 1200-2¼ for climb in visual conditions. **Rwy 34**, std. w/min. climb of 235' per NM to 1700 or 1200-2¼ for climb in visual conditions.

DEPARTURE PROCEDURE: **Rwy 16**, climb on heading 162° to 2000 before proceeding on course.

Rwy 21L, climbing left turn on heading 150° to 3000 before turning right or for climb in visual conditions: cross Dekalb-Peachtree airport at or above 2200 MSL before proceeding on course. When executing VCOA, notify ATC prior to departure. **Rwy 21R**, climbing left turn on heading 150° to 3000 before turning right or for climb in visual conditions: cross Dekalb-Peachtree airport at or above 2200 MSL before proceeding on course. When executing VCOA, notify ATC prior to departure. **Rwy 34**, for climb in visual conditions: cross Dekalb-Peachtree airport at or above 2200 MSL before proceeding on course. When executing VCOA, notify ATC prior to departure.

NOTE: **Rwy 3L**, Ground, vegetation, towers, and buildings beginning 1' from DER, 74' right of centerline, up to 179' AGL/1177' MSL. **Rwy 3R**, vegetation and poles beginning 62' from DER, on centerline, up to 100' AGL/1142' MSL. **Rwy 16**, vegetation, pole, sign, and tower beginning 2' from DER, 44' left of centerline, up to 100' AGL/1079' MSL. **Rwy 21L**, vegetation, spires, pole and sign beginning 28' from DER, 40' right of centerline, up to 100' AGL/1066' MSL. **Rwy 21R**, vegetation, spires, pole and sign beginning 25' from DER, 64' right of centerline, up to 100' AGL/1095' MSL. **Rwy 34**, vegetation, vehicles, poles, signs, and buildings beginning 121' from DER, 9' right of centerline, up to 100' AGL/1098' MSL.

08 JAN 2015 to 05 FEB 2015

08 JAN 2015 to 05 FEB 2015

15008

**TAKEOFF MINIMUMS, (OBSTACLE) DEPARTURE PROCEDURES, AND
DIVERSE VECTOR AREA (RADAR VECTORS)**

TAKEOFF MINIMUMS, (OBSTACLE) DEPARTURE PROCEDURES, AND DIVERSE VECTOR AREA (RADAR VECTORS)

15008

ATLANTA, GA (CON'T)

FULTON COUNTY AIRPORT-BROWN
FIELD (FTY)

TAKEOFF MINIMUMS AND (OBSTACLE) DEPARTURE PROCEDURES

AMDT 7 13010 (FAA)

TAKEOFF MINIMUMS: **Rwy 8**, 300-1½ or std. w/min. climb of 310' per NM to 1200. **Rwy 9**, 300-2 or std. w/min. climb of 290' per NM to 1200. **Rwy 14**, 300-2 with minimum climb of 340' per NM to 1600 or std. w/min. climb of 987' per NM to 1200. **Rwy 26**, 500-2¼ or std. w/min. climb of 300' per NM to 1400. **Rwy 27**, 500-3 or std. w/min. climb of 270' per NM to 1400. **Rwy 32**, 600-3 or std. w/min. climb of 410' per NM to 1400.

DEPARTURE PROCEDURE: **Rwys 8, 9**, climbing left turn on heading 060° to 3100 before proceeding on course. **Rwy 14**, climb on heading 144° to 1700 before proceeding on course.

NOTE: **Rwy 8**, pole, 11' from DER, 210' left of centerline, 16' AGL/828' MSL. Trees beginning 35' to 227' from DER, and 162' to 307' left of centerline, up to 100' AGL/964' MSL. Trees beginning 215' from DER, left and right of centerline, up to 100' AGL/942' MSL. Tower, 2998' from DER, 1300' left of centerline, 138' AGL/940' MSL. Building, 157' from DER, 316' right of centerline, 17' AGL/828' MSL. Tower, 3382' from DER, 927' right of centerline, 134' AGL/929' MSL. Multiple signs, 4384' from DER, 267' right of centerline, 146' AGL/972' MSL. Tower, 1.2 NM from DER, 539' right of centerline, 156' AGL/1102' MSL. **Rwy 9**, multiple trees beginning 10' from DER, 357' left of centerline, up to 43' AGL/853' MSL. Tree, 1.2 NM from DER, 1872' right of centerline, up to 100' AGL/1068' MSL. Tower, 3645' from DER, 895' left of centerline, 138' AGL/940' MSL. Pole, 358' from DER, 182' right of centerline, 16' AGL/828' MSL. Tower, 4027' from DER, 1333' right of centerline, 134' AGL/929' MSL. Multiple signs, 5030' from DER, 673' right of centerline, 146' AGL/972' MSL. Tower, 1.3 NM from DER, 948' right of centerline, 156' AGL/1102' MSL. **Rwy 14**, building, 233' from DER, 348' left of centerline, 44' AGL/889' MSL. Tower, 649' from DER, 2' left of centerline, 21' AGL/873' MSL. Tower, 656' from DER, 180' left of centerline, 17' AGL/872' MSL. Sign, 780' from DER, 371' left of centerline, 43' AGL/919' MSL. Tree, 1313' from DER, 834' left of centerline, up to 100' AGL/1008' MSL. Pole 421' from DER, 356' right of centerline, 30' AGL/871' MSL. Vehicle on road, 519' from DER, 5' right of centerline, up to 15' AGL/879' MSL. Tower, 630' from DER, 173' right of centerline, 25' AGL/872' MSL. Tree, 1116' from DER, 184' right of centerline, up to 100' AGL/903' MSL. **Rwy 26**, multiple trees beginning 1161' from DER, 540' left of centerline, up to 100' AGL/832' MSL. Tramway, 1.1 NM from DER, 2067' left of centerline, 204' AGL/1004' MSL. Tower, 1.2 NM from DER, 2107' left of centerline, 203' AGL/999' MSL. **Rwy 27**, multiple trees beginning 2.4 NM from DER, 1947' right of centerline, up to 100' AGL/1279' MSL. Tower, 2.8 NM from DER, 1194' right of centerline, 150' AGL/1241' MSL. **Rwy 32**, multiple trees beginning 1.0 NM from DER, 34' left of centerline, up to 100' AGL/1199' MSL. Tower, 2.7 NM from DER, 4764' right of centerline, 427' AGL/1399' MSL.

ATLANTA, GA (CONT.)

HARTSFIELD-JACKSON ATLANTA INTL
(ATL)

TAKEOFF MINIMUMS AND (OBSTACLE) DEPARTURE PROCEDURES

AMDT 6 14261 (FAA)

TAKEOFF MINIMUMS: **Rwy 8R**, 300-1 or std. w/min. climb of 250' per NM to 1200, or alternatively with standard takeoff minimums and a normal 200' per NM climb gradient, takeoff must occur no later than 2000' prior to DER. **Rwy 9L**, 300-1 or std. w/min. climb of 260' per NM to 1200.

DEPARTURE PROCEDURE: **Rwy 8R**, climb heading 095° to 1500 before turning right. **Rwy 9L**, climb heading 095° to 1400 before turning left.

NOTE: **Rwy 8L**, trees beginning 855' from DER, 533' left of centerline, up to 67' AGL/1048' MSL. **Rwy 8R**, trees beginning 345' from DER, 488' left of centerline, up to 68' AGL/1013' MSL. Tower 4815' from DER, 1636' right of centerline, 151' AGL/1148' MSL. **Rwy 9L**, communication tower 4808' from DER, 1727' left of centerline, 133' AGL/1129' MSL. Pole 4806' from DER, 1731' left of centerline, 141' AGL/1137' MSL. **Rwy 10**, poles beginning 58' from DER, 468' right of centerline, up to 41' AGL/1016' MSL. **Rwy 26L**, pole and buildings beginning 1247' from DER, 751' left of centerline, up to 66' AGL/1079' MSL. Trees beginning 2797' from DER, 469' left of centerline, up to 70' AGL/1103' MSL. **Rwy 26R**, pole 531' from DER, 619' right of centerline, 36' AGL/1032' MSL. Pole and trees beginning 1749' from DER, 1221' right of centerline, up to 60' AGL/1099' MSL. Trees beginning 1988' from DER, 61' left of centerline, up to 59' AGL/1097' MSL. Trees beginning 2811' from DER, 748' left of centerline, up to 69' AGL/1113' MSL. Poles, trees, and towers beginning 3414' from DER, 100' right of centerline, up to 101' AGL/1137' MSL. **Rwy 27L**, tank 3937' from DER, 1255' right of centerline, 103' AGL/1129' MSL. **Rwy 27R**, terrain and signs beginning 17' from DER, 288' left of centerline, up to 5' AGL/1024' MSL. Pole 1012' from DER, 729' right of centerline, 32' AGL/1046' MSL. Agricultural equipment, elevator, tank, tower, and trees beginning 3657' from DER, 201' right of centerline, up to 103' AGL/1141' MSL. **Rwy 28**, catenary, sign, and trees beginning 1948' from DER, 770' left of centerline, up to 63' AGL/1067' MSL. Trees beginning 3157' from DER, 1209' left of centerline, up to 85' AGL/1097' MSL.

NEWNAN-COWETA COUNTY (CCO)

TAKEOFF MINIMUMS AND (OBSTACLE) DEPARTURE PROCEDURES

AMDT 3B 11069 (FAA)

DEPARTURE PROCEDURE: **Rwy 32**, climbing left turn via heading 270° to 2100 before proceeding on course.

NOTE: **Rwy 14**, trees beginning 832' from DER, 346' left of centerline, up to 100' AGL/999' MSL. Trees 253' from DER, 443' right of centerline, up to 100' AGL/944' MSL. **Rwy 32**, trees beginning 975' from DER, 21' right of centerline, up to 100' AGL/1051' MSL. Utility tower 1063' from DER, 320' right of centerline, 65' AGL/997' MSL. Fence 1286' from DER, 550' right of centerline, 25' AGL/1005' MSL. Trees beginning 167' from DER, 1' left of centerline, up to 100' AGL/1048' MSL. Utility towers beginning 135' from DER, 36' left of centerline, up to 65' AGL/1032' MSL. Tree 1684' from DER, 784' right of centerline 100' AGL/1119' MSL.

15008

TAKEOFF MINIMUMS, (OBSTACLE) DEPARTURE PROCEDURES, AND DIVERSE VECTOR AREA (RADAR VECTORS)

**TAKEOFF MINIMUMS, (OBSTACLE) DEPARTURE PROCEDURES, AND
DIVERSE VECTOR AREA (RADAR VECTORS)**

15008

ATLANTA, GA (CONT.)

**PAULDING-NORTHWEST ATLANTA (PUJ)
TAKEOFF MINIMUMS AND (OBSTACLE)
DEPARTURE PROCEDURES
AMDT 1 11125 (FAA)**

NOTE: **Rwy 31**, trees beginning 213' from DER, left and right of centerline, up to 100' AGL/1399' MSL. Trees beginning 4202' from DER, left and right of centerline, up to 100' AGL/1419' MSL.

ATMORE, AL

**ATMORE MUNI (0R1)
TAKEOFF MINIMUMS AND (OBSTACLE)
DEPARTURE PROCEDURES
AMDT 1 10322 (FAA)**

NOTE: **Rwy 18**, trees beginning 108' from DER, 134' left and right of centerline, up to 100' AGL/380' MSL. Trees beginning 168' from DER, 512' right of centerline, up to 100' AGL/379' MSL. Vehicles on roadway beginning 203' from DER, on centerline, up to 15' AGL/294' MSL. Transmission line beginning 1330' from DER, left and right of centerline, up to 70' AGL/344' MSL. **Rwy 36**, vehicles on roadway beginning 182' from DER, left and right of centerline, up to 15' AGL/307' MSL. Trains on tracks beginning 922' from DER, left and right of centerline, up to 23' AGL/313' MSL. Trees beginning 443' from DER, 314' right of centerline, up to 100' AGL/390' MSL. Trees beginning 489' from DER, 321' left of centerline, up to 100' AGL/390' MSL.

AUBURN, AL

**AUBURN UNIVERSITY RGNL (AUO)
TAKEOFF MINIMUMS AND (OBSTACLE)
DEPARTURE PROCEDURES
AMDT 1 12208 (FAA)**

NOTE: **Rwy 11**, terrain 36' from DER, 169' right of centerline, 768' MSL. Trees beginning 761' from DER, 277' left of centerline, up to 100' AGL/859' MSL. **Rwy 18**, trees beginning 1127' from DER, 659' right of centerline, up to 90' AGL/793' MSL. **Rwy 29**, trees and pole beginning 231' from DER, 407' right of centerline, up to 90' AGL/841' MSL. Trees beginning 201' from DER, 505' left of centerline up to 90' AGL/860' MSL. **Rwy 36**, trees and terrain beginning 87' from DER, 392' right of centerline up to 90' AGL/865' MSL. Trees beginning 223' from DER, 507' left of centerline, up to 90' AGL/840' MSL.

AUGUSTA, GA

**AUGUSTA RGNL AT BUSH FIELD (AGS)
TAKEOFF MINIMUMS AND (OBSTACLE)
DEPARTURE PROCEDURES
AMDT 14 12208 (FAA)**

TAKEOFF MINIMUMS: **Rwy 8**, std. w/min. climb of 391' per NM to 2600 or 1700-2½ for climb in visual conditions. **Rwy 17**, 200-1½ or std. w/min. climb of 268' per NM to 500. **Rwy 26**, 300-1¾ or std. w/min. climb of 324' per NM to 600.

DEPARTURE PROCEDURE: **Rwy 8**, for climb in visual conditions: cross Augusta Rgnl at Bush Field airport at or above 1700 before proceeding on course. When executing VCOA, notify ATC prior to departure.

Rwy 17, climb heading 172° to 900 before turning left.

Rwy 26, climb heading 262° to 1000 before proceeding on course. **Rwy 35**, climb heading 352° to 1200 before turning right.

NOTE: **Rwy 8**, trees 2011' from DER, 379' left of centerline, up to 100' AGL/209' MSL. **Rwy 17**, bush 746' from DER, 616' left of centerline, up to 14' AGL/158' MSL. Trees beginning 1700' from DER, left and right of centerline, up to 100' AGL/339' MSL. **Rwy 26**, trees beginning 992' from DER, 294' left of center line, up to 100' AGL/355' MSL. Trees beginning 1254' from DER, 175' right of centerline, up to 100' AGL/419' MSL. Building 1344' from DER, 436' left of centerline, up to 31' AGL/175' MSL. Light pole 1015' from DER, 287' right of centerline, up to 31' AGL/175' MSL.

08 JAN 2015 to 05 FEB 2015

08 JAN 2015 to 05 FEB 2015

15008

**TAKEOFF MINIMUMS, (OBSTACLE) DEPARTURE PROCEDURES, AND
DIVERSE VECTOR AREA (RADAR VECTORS)**

**TAKEOFF MINIMUMS, (OBSTACLE) DEPARTURE PROCEDURES, AND
DIVERSE VECTOR AREA (RADAR VECTORS)**

15008

AUGUSTA, GA (CON'T)**DANIEL FIELD (DNL)**

TAKEOFF MINIMUMS AND (OBSTACLE)
DEPARTURE PROCEDURES
AMDT 6 14205 (FAA)

TAKEOFF MINIMUMS: **Rwy 23**, std. w/ min. climb of
250' per NM to 800.

DEPARTURE PROCEDURE: **Rwy 23**, climb heading
215° to 1300 before turning right. **Rwy 29**, climb
heading 288° to 1000 before turning left.

NOTE: **Rwy 5**, vehicles on road, poles, trees, signs, and
wall beginning 16' from DER 1' left of centerline, up to
65' AGL/472' MSL. Poles, trees, signs, buildings, and
wall beginning 175' from DER, 40' right of centerline,
up to 50' AGL/475' MSL. Trees, buildings, and poles
beginning 591' from DER, 37' left of centerline, up to
65' AGL/492' MSL. Trees, poles, and building
beginning 873' from DER, 170' right of centerline, up to
63' AGL/490' MSL. Poles, trees, tanks, and buildings
beginning 1008' from DER, left and right of centerline,
up to 90' AGL/508' MSL. Poles, trees, and buildings
beginning 1353' from DER, left and right of centerline,
up to 95' AGL/525' MSL. Poles, trees, and buildings
beginning 1567' from DER, left and right of centerline,
up to 95' AGL/540' MSL. Poles, trees, buildings, and
towers beginning 2287' from DER, left and right of
centerline, up to 135' AGL/557' MSL. **Rwy 11**, poles,
trees, and buildings beginning 177' from DER, 360' left
of centerline, up to 35' AGL/453' MSL. Trees and pole
beginning 188' from DER, 479' right of centerline, up to
53' AGL/472' MSL. Vehicles on road, trees, poles, and
buildings beginning 276' from DER, 2' right of
centerline, up to 65' AGL/476' MSL. Trees, buildings,
poles, and sign beginning 343' from DER, 10' left of
centerline, up to 65' AGL/476' MSL. Poles, trees, and
buildings beginning 620' from DER, 11' right of
centerline, up to 75' AGL/485' MSL. Poles, trees, and
building beginning 845' from DER, 7' left of centerline,
up to 80' AGL/491' MSL. Pole, building, and trees
beginning 1109' from DER, 9' right of centerline, up to
85' AGL/495' MSL. Building 2240' from DER, 518' right
of centerline, 106' AGL/509' MSL. **Rwy 23**, trees
beginning 9' from DER, 141' right of centerline, up to
30' AGL/402' MSL. Trees beginning 11' from DER,
195' left of centerline, up to 25' AGL/398' MSL. Trees
beginning 105' from DER, left and right of centerline,
up to 112' AGL/430' MSL. **Rwy 29**, trees, buildings,
and poles beginning from DER, 192' right of centerline,
up to 75' AGL/508' MSL. Vehicles on road, trees,
buildings, pole, and sign beginning 4' from DER, 131'
left of centerline, up to 40' AGL/472' MSL. Trees and
poles beginning 354' from DER, 22' right of centerline,
up to 95' AGL/535' MSL. Tower and trees beginning
879' from DER, 6' left of centerline, up to 80' AGL/501'
MSL.

BAINBRIDGE, GA

DECATUR COUNTY INDUSTRIAL AIR
PARK (BGE)
TAKEOFF MINIMUMS AND (OBSTACLE)
DEPARTURE PROCEDURES
ORIG 09211 (FAA)

NOTE: **Rwy 14**, trees beginning 938' from DER, 238'
right of centerline, up to 100' AGL/249' MSL. **Rwy 27**,
trees beginning 1050' from DER, 52' right of centerline,
up to 100' AGL/196' MSL. Tree 1527' from DER, 63'
left of centerline, 100' AGL/192' MSL.

15008

**TAKEOFF MINIMUMS, (OBSTACLE) DEPARTURE PROCEDURES, AND
DIVERSE VECTOR AREA (RADAR VECTORS)**

SE-4

BAXLEY, GA**BAXLEY MUNI (BHC)**

TAKEOFF MINIMUMS AND (OBSTACLE)
DEPARTURE PROCEDURES
AMDT 1 12152 (FAA)

DEPARTURE PROCEDURE: **Rwy 26**, climb heading
261° to 800 before turning north.

NOTE: **Rwy 8**, trees beginning 13' from DER, 149' left of
centerline, up to 70' AGL/285' MSL. Trees beginning 749'
from DER, 465' right of centerline, up to 97' AGL/278'
MSL. Poles beginning 764' from DER, 392' right of
centerline, up to 24' AGL/234' MSL. **Rwy 26**, trees
beginning 41' from DER, 287' left of centerline, up to 88'
AGL/295' MSL. Trees beginning 227' from DER, 30' right
of centerline, up to 80' AGL/285' MSL.

BAY MINETTE, AL**BAY MINETTE MUNI (1R8)**

TAKEOFF MINIMUMS AND (OBSTACLE)
DEPARTURE PROCEDURES
ORIG 07074 (FAA)

NOTE: **Rwy 8**, brush 115' from DER, 80' left of centerline,
5' AGL/253' MSL. **Rwy 26**, trees 1190' from DER, on
centerline, 35' AGL/242' MSL. Brush 135' from DER, 91'
left of centerline, 5' AGL/212' MSL. Tree 5494' from
DER, 84' right of centerline, 100' AGL/348' MSL.

BESSEMER, AL**BESSEMER (EKY)**

TAKEOFF MINIMUMS AND (OBSTACLE)
DEPARTURE PROCEDURES
ORIG 07130 (FAA)

NOTE: **Rwy 5**, numerous trees beginning 147' from DER,
33' left of centerline, up to 100' AGL/859' MSL.
Numerous trees beginning 36' from DER, 8' right of
centerline, up to 100' AGL/769' MSL. **Rwy 23**, terrain
beginning 33' from DER, 102' left of centerline, up to 709'
MSL. Tree 74' from DER, 163' right of centerline, 50'
AGL/714' MSL. Tree 175' from DER, 439' left of
centerline, 11' AGL/710' MSL.

08 JAN 2015 to 05 FEB 2015

08 JAN 2015 to 05 FEB 2015

TAKEOFF MINIMUMS, (OBSTACLE) DEPARTURE PROCEDURES, AND DIVERSE VECTOR AREA (RADAR VECTORS)

15008

BIRMINGHAM, AL

BIRMINGHAM-SHUTTLESWORTH INTL
(BHM)

TAKEOFF MINIMUMS AND (OBSTACLE)
DEPARTURE PROCEDURES
AMDT 7 13010 (FAA)

TAKEOFF MINIMUMS: **Rwy 24**, std. w/min. climb of 271' per NM to 1400. **Rwy 6**, 300-1¾ w/min. climb of 279' per NM to 1800 or std. w/min. climb of 421' per NM to 1300. **Rwy 18**, 600-3 w/min. climb of 215' per NM to 1400 or std. w/min. climb of 450' per NM to 1500. **Rwy 36**, 300-2¼ or std. w/min. climb of 420' per NM to 1000.

DEPARTURE PROCEDURE: **Rwy 6**, climb heading 058° to 1500 before proceeding on course. **Rwy 18**, climb heading 183° to 2300 before proceeding on course. **Rwy 24**, climb heading 238° to 2300 before proceeding on course. **Rwy 36**, climb heading 003° to 1400 before proceeding on course.

NOTE: **Rwy 6**, tree 1456' from DER, 854' right of centerline, 61' AGL/767' MSL. Terrain 1759' from DER, 2' right of centerline, 722' MSL. **Rwy 18**, rising terrain beginning 135' from DER, left and right of centerline, up to 670' MSL. Tree and poles beginning 536' from DER, left and right of centerline, up to 46' AGL/701' MSL. Poles, tower, and trees beginning 1483' from DER, left and right of centerline, up to 64' AGL/749' MSL. **Rwy 24**, tree 991' from DER, 562' left of centerline, 38' AGL/642' MSL. Sign 2394' from DER, 1018' left of centerline, 54' AGL/671' MSL. **Rwy 36**, fence, tree, and vehicles on road beginning 130' from DER, left and right of centerline, up to 28' AGL/662' MSL. Tree and pole beginning 467' from DER, 470' right of centerline, up to 63' AGL/726' MSL. Trees beginning 637' from DER, 420' left of centerline, up to 13' AGL/696' MSL. Pole and tree beginning 1353' from DER, 669' left of centerline, up to 37' AGL/739' MSL. Trees, poles, and fence beginning 1279' from DER, 492' right of centerline, up to 19' AGL/713' MSL. Terrain beginning 43' from DER, left and right of centerline, up to 794' MSL.

BLAIRSVILLE, GA

BLAIRSVILLE (DZJ)

TAKEOFF MINIMUMS AND (OBSTACLE)
DEPARTURE PROCEDURES
ORIG 14261 (FAA)

TAKEOFF MINIMUMS: **Rwys 8, 26**, 2700-3 for climb in visual conditions.

DEPARTURE PROCEDURE: **Rwy 8**, for climb in visual conditions: cross Blairsville airport at or above 4500 MSL before proceeding on course. When executing VCOA, notify ATC prior to departure. **Rwy 26**, for climb in visual conditions: cross Blairsville airport at or above 4500 MSL before proceeding on course. When executing VCOA, notify ATC prior to departure.

NOTE: **Rwy 8**, vehicles on roadway beginning 1452' from DER, left and right of centerline, up to 15' AGL/1934' MSL. Trees beginning 1354' from DER, 334' right of centerline, up to 100' AGL/2059' MSL. Trees beginning 1644' from DER, 3' left of centerline, up to 100' AGL/2539' MSL. Tower 1.75 NM from DER, 559' left of centerline, 150' AGL/2550' MSL. **Rwy 26**, vehicles on roadway beginning 939' from DER, left and right of centerline, up to 15' AGL/1974' MSL. Trees beginning 435' from DER, 132' right of centerline, up to 100' AGL/2239' MSL. Trees beginning 419' from DER, 534' left of centerline, up to 100' AGL/2059' MSL. Trees beginning 1.22 NM from DER, 2394' left of centerline, up to 100' AGL/2259' MSL.

15008

TAKEOFF MINIMUMS, (OBSTACLE) DEPARTURE PROCEDURES, AND DIVERSE VECTOR AREA (RADAR VECTORS)

BLAKELY, GA

EARLY COUNTY (BIJ)

TAKEOFF MINIMUMS AND (OBSTACLE)
DEPARTURE PROCEDURES
ORIG 08045 (FAA)

NOTE: **Rwy 5**, trees beginning 12' from DER, 214' left of centerline, up to 100' AGL/319' MSL. Trees beginning 17' from DER, 122' right of centerline, up to 100' AGL/329' MSL. Vehicles on roadway, beginning 416' from DER, left and right of centerline, up to 17' AGL/236' MSL. Trains on railroad tracks beginning 883' from DER, 684' left of centerline, up to 23' AGL/242' MSL. **Rwy 23**, trees beginning at DER, 2924' right of centerline, up to 100' AGL/319' MSL. Trees beginning 417' from DER, left and right of centerline, up to 100' AGL/319' MSL. Vehicles on roadway, 537' from DER, 628' right of centerline, up to 17' AGL/236' MSL. Buildings 1418' from DER, 203' left of centerline, up to 50' AGL/269' MSL.

BREWTON, AL

BREWTON MUNI (12J)

TAKEOFF MINIMUMS AND (OBSTACLE)
DEPARTURE PROCEDURES
AMDT 2 10070 (FAA)

TAKEOFF MINIMUMS: **Rwys 18, 36**, NA-Closed Indef. NOTE: **Rwy 6**, trees 141' from DER, 33' left of centerline, 25' AGL/121' MSL. **Rwy 12**, trees 199' from DER, 495' right of centerline, 57' AGL/156' MSL. Vehicle on road, 1906' from DER, 456' right of centerline, 15' AGL/156' MSL. **Rwy 24**, trees 380' from DER, 135' left of centerline, 25' AGL, 127' MSL. **Rwy 30**, trees 92' from DER, 391' right of centerline, 46' AGL/126' MSL. Trees, 2654' from DER, 1129' left of centerline, 91' AGL/161' MSL.

BRUNSWICK, GA

BRUNSWICK GOLDEN ISLES (BQK)

TAKEOFF MINIMUMS AND (OBSTACLE)
DEPARTURE PROCEDURES
ORIG 06215 (FAA)

NOTE: **Rwy 7**, tree 1380' from DER, 840' right of centerline, 38' AGL/57' MSL. **Rwy 25**, multiple trees beginning 1259' from DER, 688' right of centerline, up to 50' AGL/74' MSL.

MALCOLM-MCKINNON (SSI)

TAKEOFF MINIMUMS AND (OBSTACLE)
DEPARTURE PROCEDURES
AMDT 3 12040 (FAA)

NOTE: **Rwy 4**, trees beginning 11' from DER, left/right of centerline, up to 100' AGL/116' MSL. Buildings beginning 54' from DER, left/ right of centerline, up to 39' AGL/55' MSL. Poles beginning 57' from DER, left/right of centerline, up to 51' AGL/67' MSL. **Rwy 16**, trees beginning 62' from DER, left/right of centerline, up to 107' AGL/119' MSL. Poles beginning 944' from DER, left/ right of centerline, up to 44' AGL/56' MSL. Towers beginning 2586' from DER, left/right of centerline, up to 109' AGL/121' MSL. **Rwy 22**, trees beginning 16' from DER, left/right of centerline, up to 100' AGL/111' MSL. Poles beginning 186' from DER, 251' right of centerline, up to 110' AGL/122' MSL. **Rwy 34**, trees beginning 87' from DER, left/right of centerline, up to 97' AGL/114' MSL. Poles beginning 802' from DER, left/right of centerline, up to 50' AGL/67' MSL. Buildings beginning 1036' from DER, left/right of centerline, up to 34' AGL/51' MSL.

08 JAN 2015 to 05 FEB 2015

TAKEOFF MINIMUMS, (OBSTACLE) DEPARTURE PROCEDURES, AND DIVERSE VECTOR AREA (RADAR VECTORS)

15008

BUTLER, AL

BUTLER-CHOCTAW COUNTY (09A)
TAKEOFF MINIMUMS AND (OBSTACLE)
DEPARTURE PROCEDURES
ORIG 06327 (FAA)

NOTE: **Rwy 11**, multiple trees beginning 511' from DER, 3' right of centerline, up to 100' AGL/229' MSL. Multiple trees beginning 560' from DER, 191' left of centerline, up to 100' AGL/229' MSL. **Rwy 29**, multiple trees beginning 831' from DER, 361' right of centerline, up to 100' AGL/209' MSL. Multiple trees beginning 387' from DER, 333' left of centerline, up to 100' AGL/219' MSL.

BUTLER, GA

BUTLER MUNI (6A1)
TAKEOFF MINIMUMS AND (OBSTACLE)
DEPARTURE PROCEDURES
AMDT 1 13234 (FAA)

NOTE: **Rwy 18**, trees beginning 64' from DER, 28' left of centerline, up to 84' AGL/734' MSL. Bushes beginning 85' from DER, 234' right of centerline, up to 15' AGL/665' MSL. Trees beginning 637' from DER, 21' right of centerline, up to 86' AGL/727' MSL. Airport beacon 826' from DER, 304' left of centerline, 56' AGL/706' MSL. Pole 868' from DER, 370' left of centerline, 51' AGL/701' MSL. **Rwy 36**, trees beginning 196' from DER, 483' left of centerline, up to 51' AGL/651' MSL.

CAIRNS AAF (KOZR)

FORT RUCKER, AL
TAKEOFF MINIMUMS AND (OBSTACLE)
DEPARTURE PROCEDURES
ORIG, 09127

Rwy 6, 24, 18, 36, and Helipads C, G, A, D1, D2:
Standard. All other helipads, NA.

DEPARTURE PROCEDURE: **Helipad C:** Climb heading 178° to 1000 before proceeding on course. **Helipad G:** Climb heading 178° to 1000 before proceeding on course.

TAKEOFF OBSTACLES: **Rwy 6:** Trees 483' from DER, 616' left of centerline 75' AGL/344' MSL. Trees 738' from DER, 641' right of centerline, 75' AGL/ 344' MSL. Trees 1,777' from DER, 825' left of centerline, 75' AGL/354' MSL. **Rwy 24:** Trees 266' from DER, 538' right of centerline, 75' AGL/354' MSL. Trees 2,501' from DER, 914' right of centerline, 75' AGL/375' MSL. Reflector 149' from DER, 149' right of centerline, 13' AGL/309' MSL. Reflector 149' from DER, 150' left of centerline, 13' AGL/309' MSL. Telephone poles beginning 1,068' from DER, 303' left of centerline, up to 23' AGL/332' MSL. **Rwy 18:** Trees 525' from DER, 578' left of centerline, 75' AGL/364' MSL. **Rwy 36:** Trees 1,199' from DER, 783' right of centerline, 75' AGL/384' MSL. Trees 3,149' from DER, 1,104' right of centerline, 75' AGL/394' MSL.

15008

TAKEOFF MINIMUMS, (OBSTACLE) DEPARTURE PROCEDURES, AND DIVERSE VECTOR AREA (RADAR VECTORS)

CAIRO, GA

CAIRO-GRADY COUNTY (70J)
TAKEOFF MINIMUMS AND (OBSTACLE)
DEPARTURE PROCEDURES
AMDT 3 10266 (FAA)

NOTE: **Rwy 13**, trees beginning 36' from DER, 240' left of centerline, up to 35' AGL/259' MSL. Trees beginning 203' from DER, 37' right of centerline, up to 35' AGL/273' MSL. Trees beginning 1037' from DER, 67' right of centerline, up to 35' AGL/285' MSL. Trees beginning 1295' from DER, 1' left of centerline, up to 35' AGL/275' MSL. **Rwy 31**, truck 120' from DER, 217' left of centerline, 15' AGL/274' MSL. Trees beginning 277' from DER, 355' right of centerline, up to 35' AGL/306' MSL. Trees beginning 1188' from DER, 4' right of centerline, up to 35' AGL/335' MSL. Trees beginning 1777' from DER, 74' left of centerline, up to 35' AGL/334' MSL.

CALHOUN, GA

TOM B. DAVID FIELD (CZL)
TAKEOFF MINIMUMS AND (OBSTACLE)
DEPARTURE PROCEDURES
AMDT 3 13346 (FAA)

TAKEOFF MINIMUMS: **Rwy 17**, min. climb of 230' per NM to 1600, or 1200-3 for climb in visual conditions. **Rwy 35**, 400-2% or std. w/min. climb of 220' per NM to 1100 or alternatively, with standard takeoff minimums and a normal 200' per NM climb gradient, takeoff must occur no later than 1900' prior to DER.

DEPARTURE PROCEDURE: **Rwy 17**, climb heading 173° to 1200 before proceeding on course. For climb in visual conditions, cross Tom B. David Field at or above 1700 before proceeding on course. When executing VCOA, notify ATC prior to departure. **Rwy 35**, climb heading 353° to 1700 before turning left.

NOTE: **Rwy 17**, trees, poles, and buildings beginning 245' from DER, left and right of centerline, up to 75' AGL/725' MSL. Trees and poles beginning 1663' from DER, left and right of centerline, up to 139' AGL/779' MSL. Trees beginning 1 NM from DER, 916' left of centerline, up to 119' AGL/879' MSL. **Rwy 35**, trees and bushes beginning 75' from DER, left and right of centerline, up to 100' AGL/730' MSL. Trees and poles beginning 1948' from DER, left and right of centerline, up to 108' AGL/738' MSL. Trees beginning 1.9 NM from DER, 298' right of centerline, up to 105' AGL/957' MSL.

CAMILLA, GA

CAMILLA-MITCHELL COUNTY (CXU)
TAKEOFF MINIMUMS AND (OBSTACLE)
DEPARTURE PROCEDURES
AMDT 2 14009 (FAA)

DEPARTURE PROCEDURE: **Rwy 8**, climb heading 084° to 1100 before turning right.

NOTE: **Rwy 8**, tree 127' from DER, 348' right of centerline, 15' AGL/185' MSL. Trees beginning 223' from DER, 499' left of centerline, up to 75' AGL/241' MSL. Trees beginning 892' from DER, 514' right of centerline, up to 75' AGL/249' MSL. Trees beginning 1511' from DER, 9' left of centerline, up to 80' AGL/267' MSL. Trees beginning 1529' from DER, 94' right centerline, up to 80' AGL/269' MSL. **Rwy 26**, trees beginning 27' from DER, 409' left of centerline, up to 45' AGL/234' MSL. Tree 29' from DER, 312' right of centerline, 35' AGL/205' MSL. Tree 40' from DER, 125' left of centerline, 8' AGL/171' MSL. Trees beginning 940' from DER, 733' left of centerline, up to 75' AGL/229' MSL. Trees beginning 1696' from DER, 1696' right of centerline, up to 80' AGL/225' MSL.

08 JAN 2015 to 05 FEB 2015

08 JAN 2015 to 05 FEB 2015

TAKEOFF MINIMUMS, (OBSTACLE) DEPARTURE PROCEDURES, AND DIVERSE VECTOR AREA (RADAR VECTORS)

CANON, GA

FRANKLIN COUNTY (18A)

TAKEOFF MINIMUMS AND (OBSTACLE)

DEPARTURE PROCEDURES

ORIG 08269 (FAA)

TAKEOFF MINIMUMS: **Rwy 8**, 400-2¼ or std. w/ min. climb of 217' per NM to 1400. Alternatively, with standard takeoff minimums and a normal 200'/NM climb gradient, takeoff must occur no later than 1800' prior to DER.

NOTE: **Rwy 8**, trees beginning 142' from DER, 9' right of centerline, up to 110' AGL/1006' MSL. Trees beginning 469' from DER, 43' left of centerline, up to 114' AGL/1004' MSL. **Rwy 26**, trees beginning 134' from DER, 301' right of centerline, up to 57' AGL/885' MSL. Trees beginning 514' from DER, 26' left of centerline, up to 73' AGL/902' MSL.

CANTON, GA

CHEROKEE COUNTY (CNI)

TAKEOFF MINIMUMS AND (OBSTACLE)

DEPARTURE PROCEDURES

AMDT 2 11237 (FAA)

TAKEOFF MINIMUMS: **Rwy 5**, std. w/min. climb of 300' per NM to 4500, or 1600-3 for climb in visual conditions. **Rwy 23**, 300-1 or std. w/min. climb of 236' per NM to 1500, or alternately, with standard takeoff minimums and a normal 200' per NM climb gradient, takeoff must occur no later than 1800' prior to DER.

DEPARTURE PROCEDURE: **Rwy 5**, for climb in visual conditions: cross Cherokee County Airport at or above 2700 MSL before proceeding on course. **Rwy 23**, climb on heading 227° to 2500 before proceeding on course.

NOTE: **Rwy 5**, trees beginning 196' from DER, 45' left of centerline, up to 100' AGL/1299' MSL. Trees beginning 215' from DER, 37' right of centerline, up to 100' AGL/1339' MSL. **Rwy 23**, pylon and trees beginning 142' from DER, 363' left of centerline, up to 51' AGL/1211' MSL. Trees beginning 164' from DER, 335' right of centerline, up to 100' AGL/1359' MSL.

CARROLLTON, GA

WEST GEORGIA RGNL-O V GRAY FIELD (CTJ)

TAKEOFF MINIMUMS AND (OBSTACLE)

DEPARTURE PROCEDURES

ORIG 09127 (FAA)

TAKEOFF MINIMUMS: **Rwy 35**, 300-1 or std. w/ min. climb of 276' per NM to 1400.

DEPARTURE PROCEDURE: **Rwy 35**, climb heading 348° to 1800 before turning east.

NOTE: **Rwy 17**, trees beginning 261' from DER, 433' right of centerline, up to 100' AGL/1219' MSL. Trees beginning 301' from DER, 449' left of centerline, up to 100' AGL/1199' MSL. **Rwy 35**, trees beginning 123' from DER, 3' left of centerline, up to 100' AGL/1283' MSL. Trees beginning 1189' from DER, 127' right of centerline, up to 100' AGL/1283' MSL. Vehicle on road 2489' from DER, 477' left of centerline, 17' AGL/1235' MSL.

CARTERSVILLE, GA

CARTERSVILLE (VPC)

TAKEOFF MINIMUMS AND (OBSTACLE)

DEPARTURE PROCEDURES

AMDT 1 07298 (FAA)

TAKEOFF MINIMUMS: **Rwy 1**, 500-2¼ or std. w/ min. climb of 361' per NM to 1300. **Rwy 19**, 400-2¼ or std. w/ min. climb of 600' per NM to 1300.

DEPARTURE PROCEDURE: **Rwy 1**, climb heading 007° to 2300 before proceeding on course. **Rwy 19**, climb heading 187° to 1300 before turning westbound.

NOTE: **Rwy 1**, trees beginning 24' from DER, 236' left of centerline, up to 74' AGL/798' MSL. Brush 199' from DER, 160' right of centerline, 26' AGL/756' MSL. Tree 1253' from DER, 641' right of centerline, 69' AGL/808' MSL. Trees beginning 8789' from DER, 2511' right of centerline, up to 100' AGL/1199' MSL. **Rwy 19**, terrain 194' from DER, 466' left of centerline, 0' AGL/775' MSL. Trees beginning 2357' from DER, 44' left of centerline, up to 80' AGL/1079' MSL. Trees beginning 2312' from DER, 119' right of centerline, up to 80' AGL/1019' MSL.

CEDARTOWN, GA

POLK COUNTY AIRPORT - CORNELIUS

MOORE FIELD (4A4)

TAKEOFF MINIMUMS AND (OBSTACLE)

DEPARTURE PROCEDURES

AMDT 1 11237 (FAA)

NOTE: **Rwy 10**, trees beginning 9' from DER, 283' left of centerline, up to 100' AGL/1029' MSL. Trees beginning 25' from DER, 391' right of centerline, up to 100' AGL/1017' MSL. **Rwy 28**, trees beginning 18' from DER, 466' left of centerline, up to 100' AGL/1042' MSL. Trees beginning 96' from DER, 282' right of centerline, up to 100' AGL/1025' MSL.

CENTRE, AL

CENTRE-PIEDMONT CHEROKEE COUNTY

RGNL (PYP)

TAKEOFF MINIMUMS AND (OBSTACLE)

DEPARTURE PROCEDURES

ORIG 08101 (FAA)

DEPARTURE PROCEDURE: **Rwy 7**, Climb heading 067° to 1400 before turning South. **Rwy 25**, Climb heading 247° to 2500 before turning South.

NOTE: **Rwy 7**, multiple trees beginning 1481' from DER, 456' right of centerline up to 100' AGL/709' MSL. Multiple trees beginning 2273' from DER, 434' left of centerline up to 100' AGL/689' MSL. **Rwy 25**, multiple trees beginning 2780' from DER, 245' right of centerline up to 100' AGL/689' MSL. Tree 3093' from DER, 516' left of centerline 100' AGL/679' MSL.

TAKEOFF MINIMUMS, (OBSTACLE) DEPARTURE PROCEDURES, AND DIVERSE VECTOR AREA (RADAR VECTORS)

15008

CENTREVILLE, AL

BIBB COUNTY (0A8)

TAKEOFF MINIMUMS AND (OBSTACLE)

DEPARTURE PROCEDURES

ORIG 07354 (FAA)

TAKEOFF MINIMUMS: **Rwy 10**, 300-1¼ or std. w/ min.climb of 330' per NM to 600. **Rwy 28**, 300-2 or std. w/ min. climb of 300' per NM to 600.DEPARTURE PROCEDURE: **Rwy 10**, climb heading 097° to 1000 before turning left.NOTE: **Rwy 10**, brush 430' from DER, 42' right of centerline, 48' AGL/268' MSL. Trees beginning 4800' from DER, 1397' left of centerline, up to 100' AGL/479' MSL. **Rwy 28**, trees beginning at DER, 239' left of centerline, up to 100' AGL/339' MSL. Trees beginning at DER, 309' right of centerline, up to 100' AGL/499' MSL.

CHATOM, AL

ROY WILCOX (5R1)

TAKEOFF MINIMUMS AND (OBSTACLE)

DEPARTURE PROCEDURES

ORIG 14149 (FAA)

TAKEOFF MINIMUMS: **Rwy 12**, 300-1¼ or std. w/min.

climb of 234' per NM to 400, or alternatively, with standard takeoff minimums and a normal 200' per NM climb gradient. Takeoff must occur no later than 1900' prior to DER.

NOTE: **Rwy 12**, tree 17' from DER, 155' left of centerline, 100' AGL/223' MSL. Trees beginning 123' from DER, 171' right of centerline, up to 100' AGL/216' MSL. Trees beginning 290' from DER, 68' left of centerline, up to 100' AGL/259' MSL. Tree 1 NM from DER, 462' right of centerline, 100' AGL/309' MSL.**Rwy 30**, power pole and tree beginning 6' from DER, 197' left of centerline, up to 100' AGL/273' MSL. Trees and power pole beginning 95' from DER, 205' right of centerline, up to 100' AGL/272' MSL. Vehicles on road, poles and sign beginning 175' from DER, left and right of centerline, up to 15' AGL/189' MSL. Trees beginning 611' from DER, left and right of centerline, up to 100' AGL/258' MSL.

CLANTON, AL

CHILTON COUNTY (02A)

TAKEOFF MINIMUMS AND (OBSTACLE)

DEPARTURE PROCEDURES

ORIG-A 10266 (FAA)

TAKEOFF MINIMUMS: **Rwy 8**, 300-1. **Rwy 26**, 200-1 or std. with a min. climb of 250' per NM to 1000.DEPARTURE PROCEDURE: **Rwy 8**, climb heading 077° to 1000 before turning on course. **Rwy 26**, climb heading 257° to 1100 before turning on course.NOTE: **Rwy 26**, tank 4836' from DER, 1144' left of centerline, 90' AGL/710' MSL.

CLAXTON, GA

CLAXTON-EVANS COUNTY (CWV)

TAKEOFF MINIMUMS AND (OBSTACLE)

DEPARTURE PROCEDURES

ORIG 08269 (FAA)

NOTE: **Rwy 9**, trees beginning at DER, left and right of centerline, up to 100' AGL/199' MSL. **Rwy 27**, trees beginning at DER, left and right of centerline, up to 100' AGL/229' MSL. Vehicles on highway beginning 236' from DER, left and right of centerline, up to 17' AGL/136' MSL.

CLAYTON, AL

CLAYTON MUNI (11A)

TAKEOFF MINIMUMS AND (OBSTACLE)

DEPARTURE PROCEDURES

AMDT 2 14065 (FAA)

TAKEOFF MINIMUMS: **Rwy 9**, 400-2 or std. w/ min. climb of 500' per NM to 900. **Rwy 27**, 300-2 or std. w/min.

climb of 450' per NM to 800.

DEPARTURE PROCEDURE: **Rwy 9**, climb heading 097° to 900 before turning right.NOTE: **Rwy 9**, trees beginning 157' from DER, 399' left of centerline, up to 65' AGL/502' MSL. Trees beginning 408' from DER, 302' right of centerline, up to 100' AGL/529' MSL. Trees 1628' from DER, 734' right of centerline, up to 100' AGL/550' MSL. Trees 620' from DER, 294' left of centerline, up to 100' AGL/527' MSL. Trees beginning 4830' from DER, 252' left of centerline, up to 100' AGL/575' MSL. Tank 5669' from DER, 1978' left of centerline, 135' AGL/735' MSL. Trees 1.1 NM from DER, 979' left of centerline, up to 100' AGL/694' MSL. Trees 1.7 NM from DER, 835' right of centerline, up to 100' AGL/694' MSL. Tank 1.1 NM from DER, 592' right of centerline, 135' AGL/735' MSL. **Rwy 27**, light pole 481' from DER, 207' right of centerline, 23' AGL/463' MSL. Trees beginning 1152' from DER, 372' left of centerline, up to 100' AGL/516' MSL. Trees beginning 1915' from DER, 411' right of centerline, up to 100' AGL/521' MSL. Trees 2786' from DER, 667' left of centerline, up to 100' AGL/579' MSL. Trees 1.4 NM from DER, 2359' right of centerline, up to 100' AGL/659' MSL. Trees 1.1 NM from DER, 732' left of centerline, up to 100' AGL/605' MSL.

COCHRAN, GA

COCHRAN (48A)

TAKEOFF MINIMUMS AND (OBSTACLE)

DEPARTURE PROCEDURES

AMDT 2 09295 (FAA)

TAKEOFF MINIMUMS: **Rwy 23**, 300-1¼ or std. w/ min. climb of 316' per NM to 700.DEPARTURE PROCEDURE: **Rwy 5**, climb heading 049° to 1700 before turning left. **Rwy 11**, climb heading 107° to 1200 before turning left. **Rwy 23**, climb heading 229° to 900 before proceeding on course. **Rwy 29**, climb heading 287° to 900 before turning right.NOTE: **Rwy 5**, trees beginning 10' from DER, left and right of centerline, up to 100' AGL/419' MSL. **Rwy 11**, mobile sprinklers, 166' from DER, 331' right of centerline, up to 24' AGL/345' MSL. Trees beginning 979' from DER, 753' left of centerline, up to 100' AGL/409' MSL. Trees beginning 1118' from DER, 678' right of centerline, up to 100' AGL/395' MSL. **Rwy 23**, road beginning 196' from DER, 541' left of centerline, 15' AGL/344' MSL. Trees beginning 746' from DER, 302' left of centerline, up to 100' AGL/499' MSL. Trees beginning 1061' from DER, 473' right of centerline, up to 100' AGL/539' MSL. **Rwy 29**, ground and trees beginning 42' from DER, 480' right of centerline, up to 100' AGL/464' MSL. Trees beginning 212' from DER, 367' left of centerline, up to 100' AGL/442' MSL.

15008

TAKEOFF MINIMUMS, (OBSTACLE) DEPARTURE PROCEDURES, AND DIVERSE VECTOR AREA (RADAR VECTORS)

TAKEOFF MINIMUMS, (OBSTACLE) DEPARTURE PROCEDURES, AND DIVERSE VECTOR AREA (RADAR VECTORS)

15008

COLUMBUS, GA

COLUMBUS (CSG)

TAKEOFF MINIMUMS AND (OBSTACLE) DEPARTURE PROCEDURES

AMDT 7A 13122 (FAA)

TAKEOFF MINIMUMS: **Rwy 13**, std. w/ min. climb of 205' per NM to 1200 or alternatively, with standard takeoff minimums and a normal 200' per NM climb gradient, takeoff must occur no later than 1200' prior to DER or 1700-2½ for climb in visual conditions. **Rwy 24**, std. with a min. climb of 225' per NM to 1800 or 1700-2½ for climb in visual conditions. **Rwy 31**, 300-2 or std. w/ min. climb of 404' per NM to 700.

DEPARTURE PROCEDURE: **Rwy 6**, climb heading 056° to 1400 before turning south. **Rwy 13**, climb heading 070° to 2100 before turning south or for climb in visual conditions cross Columbus airport at or above 1900 before proceeding on course. **Rwy 24**, climb heading 280° to 1900 before turning south or for climb in visual conditions cross Columbus airport at or above 1900 before proceeding on course. **Rwy 31**, climb heading 309° to 1400 before turning south.

NOTE: **Rwy 6**, vehicle on road, building and trees beginning 363' from DER, 6' left of centerline, up to 83' AGL/532' MSL. Trees beginning 748' from DER, 1' right of centerline, up to 51' AGL/501' MSL. **Rwy 13**, tower, flagpole, and trees beginning 396' from DER, 132' left of centerline, up to 475' AGL/989' MSL. Trees, bush, and electrical systems beginning 101' from DER, 55' right of centerline, up to 56' AGL/433' MSL. **Rwy 24**, trees beginning 894' from DER, 195' left of centerline, up to 44' AGL/465' MSL. Towers and trees beginning 2414' from DER, 298' right of centerline, up to 784' AGL/1404' MSL. **Rwy 31**, vehicle on road, bush, signs, poles, tower, and trees beginning 319' from DER, 33' left of centerline, up to 183' AGL/598' MSL. Trees, antenna, and vehicle on road beginning 319' from DER, 146' right of centerline, up to 100' AGL/569' MSL.

CORDELE, GA

CRISP COUNTY-CORDELE (CKF)

TAKEOFF MINIMUMS AND (OBSTACLE) DEPARTURE PROCEDURES

AMDT 2 07242 (FAA)

NOTE: **Rwy 5**, multiple trees beginning 120' from DER, 201' left of centerline, up to 100' AGL/391' MSL. Multiple trees beginning 364' from DER, 235' right of centerline, up to 100' AGL/412' MSL. **Rwy 10**, multiple trees beginning 21' from DER, 376' left of centerline, up to 100' AGL/409' MSL. Multiple trees beginning 627' from DER, 254' right of centerline, up to 100' AGL/426' MSL. Pole 822' from DER, 258' left of centerline, 21' AGL/343' MSL. Pole 1023' from DER, 335' left of centerline, 31' AGL/341' MSL. Vehicle on road 434' from DER, 405' right of centerline, 16' AGL/326' MSL. Vent on building 741' from DER, 339' right of centerline, 21' AGL/331' MSL. **Rwy 23**, multiple trees beginning 162' from DER, 248' left of centerline, up to 100' AGL/382' MSL. Multiple trees beginning 340' from DER, 342' right of centerline, up to 100' AGL/391' MSL. **Rwy 28**, multiple trees beginning 1235' from DER, 107' left of centerline, up to 100' AGL/388' MSL. Multiple trees beginning 101' from DER, 277' right of centerline, up to 100' AGL/400' MSL.

15008

TAKEOFF MINIMUMS, (OBSTACLE) DEPARTURE PROCEDURES, AND DIVERSE VECTOR AREA (RADAR VECTORS)

CORNELIA, GA

HABERSHAM COUNTY (AJR)

TAKEOFF MINIMUMS AND (OBSTACLE) DEPARTURE PROCEDURES

AMDT 4 11181 (FAA)

TAKEOFF MINIMUMS: **Rwy 6**, 400-2¼ or std. w/min. climb of 445' per NM to 2000.

DEPARTURE PROCEDURE: **Rwy 6**, climb heading 062° to 2300 before proceeding on course. **Rwy 24**, climb heading 242° to 1900 before proceeding on course.

NOTE: **Rwy 6**, trees, buildings, and poles beginning 68' from DER, 5' left of centerline, up to 100' AGL/1558' MSL. Trees, towers, tanks, and buildings beginning 149' from DER, 55' right of centerline, up to 127' AGL/1779' MSL. **Rwy 24**, rising terrain, trees, buildings, and poles beginning 465' from DER, 6' left of centerline, up to 100' AGL/1539' MSL. Trees, buildings, and poles beginning 517' from DER, 36' right of centerline, up to 100' AGL/1519' MSL.

COURTLAND, AL

COURTLAND (9A4)

TAKEOFF MINIMUMS AND (OBSTACLE) DEPARTURE PROCEDURES

AMDT 2 12264 (FAA)

TAKEOFF MINIMUMS: **Rwy 31**, 300-1½ or std. w/ min. climb of 220' per NM to 900, or alternatively, with standard takeoff minimums and a normal 200' per NM climb gradient, takeoff must occur no later than 1600' prior to DER.

NOTE: **Rwy 13**, terrain 34' from DER, 413' right of centerline, 573' MSL. **Rwy 17**, tree 4707' from DER, 1588' right of centerline, 100' AGL/709' MSL. **Rwy 31**, terrain 16' from DER, 484' right of centerline, 584' MSL. Trees beginning 1864' from DER, left and right of centerline, up to 100' AGL/ 759' MSL. **Rwy 35**, fence 192' from DER, 494' left of centerline, 6' AGL/591' MSL. Vehicles on road beginning 567' from DER, left and right of centerline, 15' AGL/600' MSL. Trees beginning 728' from DER, left and right of centerline, up to 100' AGL/658' MSL.

CULLMAN, AL

CULLMAN RGNL-FOLSOM FIELD (CMD)

TAKEOFF MINIMUMS AND (OBSTACLE) DEPARTURE PROCEDURES

AMDT 2A 13178 (FAA)

TAKEOFF MINIMUMS: **Rwy 20**, 300-1¼ or std. w/ min. climb of 585' per NM to 1300.

NOTE: **Rwy 2**, rising terrain beginning 40' from DER, 125' right of centerline, up to 980' MSL. Pole 1429' from DER, 665' right of centerline, 41' AGL/1006' MSL. Trees beginning 1672' from DER, left and right of centerline, up to 100' AGL/1119' MSL. **Rwy 20**, trees beginning at DER, 488' left of centerline, up to 99' AGL/1033' MSL. Trees beginning at DER, 534' right of centerline, up to 79' AGL/994' MSL. Building 436' from DER, 521' right of centerline, 20' AGL/953' MSL. Building 725' from DER, 556' right of centerline, 23' AGL/954' MSL. Trees beginning 1174' from DER, left and right of centerline, up to 125' AGL/1119' MSL. Water tower, 1.5 NM from DER 960' left of centerline, 199' AGL/1184' MSL.

08 JAN 2015 to 05 FEB 2015

08 JAN 2015 to 05 FEB 2015

TAKEOFF MINIMUMS, (OBSTACLE) DEPARTURE PROCEDURES, AND DIVERSE VECTOR AREA (RADAR VECTORS)

15008

DALTON, GA

DALTON MUNI (DNN)

TAKEOFF MINIMUMS AND (OBSTACLE)
DEPARTURE PROCEDURES

AMDT 4 06271 (FAA)

DEPARTURE PROCEDURE: **Rwy 14**, climb on heading between 112° clockwise to 320° from DER, or minimum climb of 406' per NM to 5400 for all other courses. **Rwy 32**, climb on heading between 336° clockwise to 026° from DER, or minimum climb of 380' per NM to 5400 for all other courses.

NOTE: **Rwy 32**, numerous trees beginning 674' from DER, 515' right of centerline, up to 65' AGL/807' MSL. Scrub, building, and numerous trees beginning 5' from DER, 273' left of centerline, up to 72' AGL/834' MSL.

DAWSON, GA

DAWSON MUNI (16J)

TAKEOFF MINIMUMS AND (OBSTACLE)
DEPARTURE PROCEDURES

ORIG 00279 (FAA)

TAKEOFF MINIMUMS: **Rwy 31**, 300-1 or std. with a min. climb of 270' per NM to 600.

DECATUR, AL

PRYOR FIELD RGNL (DCU)

TAKEOFF MINIMUMS AND (OBSTACLE)
DEPARTURE PROCEDURES

AMDT 1 06159 (FAA)

NOTE: **Rwy 18**, multiple trees beginning 461' from DER, 179' right of centerline, up to 100' AGL/697' MSL. **Rwy 36**, tree 2582' from DER, 791' right of centerline, 100' AGL/685' MSL.

DEMOPOLIS, AL

DEMOPOLIS RGNL (DYA)

TAKEOFF MINIMUMS AND (OBSTACLE)
DEPARTURE PROCEDURES

AMDT 1A 14205 (FAA)

TAKEOFF MINIMUMS: **Rwy 22**, 300-1 or std. w/ min. climb of 370' per NM to 400.

DEPARTURE PROCEDURE: **Rwy 4**, trees beginning at DER, 196' left and 151' right of centerline up to 100' AGL/209' MSL. **Rwy 22**, trees beginning 295' from DER, 245' right of centerline up to 100' AGL/209' MSL. Stack 4902' from DER, 1717' right of centerline, 180' AGL/273' MSL. Water tank 5607' from DER, 1066' right of centerline, 148' AGL/243' MSL. Stack 4875' from DER, 2209' right of centerline, 295' AGL/391' MSL.

DOBBINS ARB (KMGE),

MARIETTA, GA

TAKEOFF MINIMUMS AND (OBSTACLE)
DEPARTURE PROCEDURES

AMDT 4, 13262

DEPARTURE PROCEDURE: **Rwy 11**, 200-1¼ or standard with minimum climb of 244 ft/NM to 1400, or alternatively, with standard takeoff minimums and a standard 200 ft/NM climb gradient, takeoff must occur no later than 2100' prior to DER. **Rwy 29**, standard with minimum climb of 250 ft/NM to 2200'.

TAKE-OFF OBSTACLES: **Rwy 11**, Terrain 150' AGL/1177' MSL, 1 NM from DER, 1301' right of centerline. **Rwy 29**, Trees, 1159' MSL, 3767' from DER, 689' right of centerline. Trees, 1166' MSL, 3520' from DER, 674' right of centerline. Trees, 1164' MSL, 3685' from DER, 758' left of centerline. Trees, 1157' MSL, 2831' from DER, 674' left of centerline. Radar antenna, 1081' MSL, 1077' from DER, 2' right of centerline. Trees, 1190' MSL, 3280' from DER, 585' left of centerline. Antenna, 1094' MSL, 1087' from DER, 259' left of centerline. Tower, 1188' MSL, 3279' from DER, 586' left of centerline.

DONALSONVILLE, GA

DONALSONVILLE MUNI (17J)

TAKEOFF MINIMUMS AND (OBSTACLE)
DEPARTURE PROCEDURES

ORIG 09239 (FAA)

NOTE: **Rwy 18**, trees beginning 565' from DER, 107' right of centerline, up to 100' AGL/239' MSL. Vehicle on road, 608' from DER, on centerline, 15' AGL/154' MSL. **Rwy 36**, trees beginning 857' from DER, 326' right of centerline, up to 100' AGL/259' MSL. Trees beginning 1916' from DER, 974' left of centerline, up to 100' AGL/249' MSL.

DOTHAN, AL

DOTHAN RGNL (DHN)

TAKEOFF MINIMUMS AND (OBSTACLE)
DEPARTURE PROCEDURES

ORIG-A 10350 (FAA)

NOTE: **Rwy 18**, trees beginning 2047' from DER, 54' right of centerline, up to 75' AGL/457' MSL. Pole 1434' from DER, 263' left of centerline, 48' AGL/418' MSL. **Rwy 32**, trees beginning 418' from DER, 575' left of centerline, up to 59' AGL/430' MSL. REILs beginning 43' from DER, 150' left and 137' right of centerline, up to 3' AGL/402' MSL. **Rwy 36**, trees beginning 628' from DER, 362' right of centerline, up to 45' AGL/424' MSL. Tree 339' from DER, 489' right of centerline, 55' AGL/434' MSL. Trees beginning 629' from DER, 122' right of centerline, up to 41' AGL/426' MSL. Trees beginning 549' from DER, 309' right of centerline, up to 63' AGL/453' MSL. Tree 1172' from DER, 58' left of centerline, 50' AGL/435' MSL. Trees beginning 3662' from DER, left and right of centerline, up to 88' AGL/493' MSL. Tree 1037' from DER, 676' right of centerline, 93' AGL 453' MSL.

08 JAN 2015 to 05 FEB 2015

08 JAN 2015 to 05 FEB 2015

15008

TAKEOFF MINIMUMS, (OBSTACLE) DEPARTURE PROCEDURES, AND DIVERSE VECTOR AREA (RADAR VECTORS)

**TAKEOFF MINIMUMS, (OBSTACLE) DEPARTURE PROCEDURES, AND
DIVERSE VECTOR AREA (RADAR VECTORS)**

15008

DOUGLAS, GA**DOUGLAS MUNI (DQH)****TAKEOFF MINIMUMS AND (OBSTACLE)****DEPARTURE PROCEDURES**

AMDT 2 10322 (FAA)

TAKEOFF MINIMUMS: Rwy 4, std. with a min. climb of 250' per NM to 1100 or 900-2½ for climb in visual conditions.

DEPARTURE PROCEDURE: Rwy 4, for climb in visual conditions cross Douglas Muni at or above 1100 before proceeding on course.

NOTE: Rwy 4, light poles beginning 408' from DER, 408' right of centerline, up to 100' AGL/291' MSL. Vehicle on road 20' from DER, 417' right of centerline, 15' AGL/271' MSL. Vehicle on road 20' from DER, 418' left of centerline, 15' AGL/271' MSL. **Rwy 22**, trees beginning 133' from DER, 400' right of centerline, up to 100' AGL/349' MSL.

DUBLIN, GA**W. H. "BUD" BARRON (DBN)****TAKEOFF MINIMUMS AND (OBSTACLE)****DEPARTURE PROCEDURES**

AMDT 1 07242 (FAA)

NOTE: Rwy 2, trees beginning 2028' from DER, 810' left of centerline, up to 100' AGL/419' MSL. Interstate with vehicle 754' from DER, 88' right of centerline, 17' AGL/326' MSL. **Rwy 20**, trees beginning 2766' from DER, 839' right of centerline, up to 100' AGL/419' MSL. Road with vehicle 850' from DER, 91' left of centerline, 15' AGL/285' MSL. **Rwy 14**, trees beginning 1904' from DER, 167' right of centerline, up to 100' AGL/409' MSL. Trees beginning 1764' from DER, 67' left of centerline, up to 100' AGL/399' MSL. **Rwy 32**, trees beginning 1034' from DER, 193' right of centerline, up to 100' AGL/409' MSL. Trees beginning 1052' from DER, 220' left of centerline, up to 100' AGL/489' MSL.

EASTMAN, GA**HEART OF GEORGIA RGNL (EZM)****TAKEOFF MINIMUMS AND (OBSTACLE)****DEPARTURE PROCEDURES**

ORIG 05132 (FAA)

NOTE: Rwy 2, trees 2272' from DER, 106' right of centerline, 100' AGL/429' MSL. Trees 2833' from DER, 505' right of centerline, 100' AGL/439' MSL. Trees 3332' from DER, 1130' right of centerline, 100' AGL/449' MSL. **Rwy 20**, trees 802' from DER, 510' left of centerline, 100' AGL/379' MSL. Trees 1081' from DER, 126' right of centerline, 100' AGL/369' MSL.

ELBERTON, GA**ELBERT COUNTY-PATZ FIELD (EBA)****TAKEOFF MINIMUMS AND (OBSTACLE)****DEPARTURE PROCEDURES**

AMDT 1 13346 (FAA)

TAKEOFF MINIMUMS: Rwy 29, 300-1½ or std. w/min. climb of 487' per NM to 900.

NOTE: Rwy 11, trees beginning 73' from DER, 180' right of centerline, up to 80' AGL/700' MSL. Trees beginning 79' from DER, 497' left of centerline, up to 60' AGL/663' MSL. Trees beginning 572' from DER, 527' left of centerline, up to 75' AGL/674' MSL. Trees beginning 930' from DER, 278' left of centerline, up to 80' AGL/684' MSL. Trees beginning 1367' from DER, 146' left of centerline, up to 100' AGL/685' MSL. Trees beginning 1962' from DER, 7' right of centerline, up to 100' AGL/687' MSL. Trees beginning 3693' from DER, 1225' right of centerline, up to 100' AGL/725' MSL. **Rwy 29**, tree 43' from DER, 187' left of centerline, 25' AGL/625' MSL. Tree 69' from DER, 475' left of centerline, 90' AGL/697' MSL. Vehicles on road beginning 94' from DER, 171' right of centerline, up to 15' AGL/631' MSL. Tree 132' from DER, 245' right of centerline, 60' AGL/664' MSL. Trees beginning 160' from DER, left and right of centerline, up to 100' AGL/721' MSL. Poles, vertical structure and vehicles beginning 929' from DER, 219' right of centerline, up to 62' AGL/700' MSL. Trees and poles beginning 1566' from DER, left and right of centerline, up to 100' AGL/734' MSL. Trees beginning 2479' from DER, left and right of centerline, up to 100' AGL/757' MSL. Buildings beginning 2665' from DER, 709' right of centerline, up to 36' AGL/697' MSL. Trees, buildings, poles beginning 2956' from DER, left and right of centerline, up to 100' AGL/769' MSL.

ENTERPRISE, AL**ENTERPRISE MUNI (EDN)****TAKEOFF MINIMUMS AND (OBSTACLE)****DEPARTURE PROCEDURES**

ORIG 09239 (FAA)

NOTE: Rwy 5, trees beginning 260' from DER, 50' left of centerline, up to 100' AGL/469' MSL. Tree 122' from DER, 177' right of centerline, 100' AGL/459' MSL.

Rwy 23, trees beginning 8' from DER, 203' right of centerline, up to 44' AGL/386' MSL. Trees beginning 10' from DER, 336' left of centerline, up to 28' AGL/370' MSL.

EUFAULA, AL**WEEDON FIELD (EUF)****TAKEOFF MINIMUMS AND (OBSTACLE)****DEPARTURE PROCEDURES**

AMDT 1 11237 (FAA)

NOTE: Rwy 18, trees beginning 661' from DER, 397' left of centerline, up to 100' AGL/324' MSL. Pole 181' from DER, 353' left of centerline, 65' AGL/304' MSL. Trees beginning 1207' from DER, 425' left of centerline, up to 100' AGL/360' MSL. Trees beginning 2011' from DER, 335' right of centerline, up to 100' AGL/369' MSL. **Rwy 36**, trees beginning 1097' from DER, 618' left of centerline, up to 100' AGL/380' MSL. Trees beginning 16' from DER, 432' right of centerline, up to 100' AGL/376' MSL. Trees beginning 2746' from DER, 325' left of centerline, up to 100' AGL/356' MSL.

15008

**TAKEOFF MINIMUMS, (OBSTACLE) DEPARTURE PROCEDURES, AND
DIVERSE VECTOR AREA (RADAR VECTORS)**

08 JAN 2015 to 05 FEB 2015

08 JAN 2015 to 05 FEB 2015

TAKEOFF MINIMUMS, (OBSTACLE) DEPARTURE PROCEDURES, AND DIVERSE VECTOR AREA (RADAR VECTORS)

15008

EVERGREEN, AL

MIDDLETON FIELD (GZH)

TAKEOFF MINIMUMS AND (OBSTACLE)

DEPARTURE PROCEDURES

AMDT 2 13122 (FAA)

TAKEOFF MINIMUMS: **Rwy 19**, 300-1¼ or std. w/ min. climb of 215' per NM to 600, or alternatively, with standard takeoff minimums and a normal 200' per NM climb gradient, takeoff must occur no later than 1500' prior to DER. **Rwy 28**, 300-1¼ or std. w/ min. climb of 265' per NM to 600.

DEPARTURE PROCEDURE: **Rwy 19**, climb heading 188° to 800 before turning left.

NOTE: **Rwy 1**, trees beginning 316' from DER, left and right of centerline, up to 100' AGL/389' MSL. Vehicles on road beginning 517' from DER, left and right of centerline, up to 17' AGL/294' MSL. **Rwy 10**, rising terrain abeam DER, left and right of centerline, up to 259' MSL. Trees beginning 242' from DER, left and right of centerline, up to 100' AGL/359' MSL. **Rwy 19**, rising terrain abeam DER, left and right of centerline, up to 279' MSL. Trees beginning 394' from DER, left and right of centerline, up to 100' AGL/469' MSL. Vehicles on road beginning 696' from DER, left and right of centerline, up to 15' AGL/304' MSL. **Rwy 28**, windsock 159' from DER, 498' right of centerline, 20' AGL/281' MSL. Trees beginning 294' from DER, left and right of centerline, up to 100' AGL/489' MSL. Antenna 342' from DER, 455' right of centerline, 30' AGL/288' MSL.

FAIRHOPE, AL

H L SONNY CALLAHAN (CQF)

TAKEOFF MINIMUMS AND (OBSTACLE)

DEPARTURE PROCEDURES

AMDT 1 11125 (FAA)

NOTE: **Rwy 1**, trees beginning 824' from DER, left and right of centerline, up to 100' AGL/204' MSL.

FAYETTE, AL

RICHARD ARTHUR FIELD (M95)

TAKEOFF MINIMUMS AND (OBSTACLE)

DEPARTURE PROCEDURES

AMDT 1 08045 (FAA)

NOTE: **Rwy 18**, 300-1¼ or std. w/ min. climb of 349' per NM to 700. **Rwy 36**, 300-1 or std. w/ min. climb of 306' per NM to 600.

DEPARTURE PROCEDURE: **Rwy 18**, climb heading 183° to 1200 before proceeding on course.

NOTE: **Rwy 18**, terrain beginning at DER, 142' right of centerline, up to 335' MSL. Multiple trees beginning 230' from DER, 28' right of centerline, up to 100' AGL/435' MSL. Multiple trees beginning 40' from DER, 102' left of centerline, up to 93' AGL/ 418' MSL. Tower 1.0 NM from DER, 1395' right of centerline, 224' AGL/549' MSL. **Rwy 36**, tower 39' from DER, 341' left of centerline, 40' AGL/399' MSL. Multiple trees beginning 390' from DER, 14' right of centerline, up to 109' AGL/478' MSL. Multiple trees beginning 414' from DER, 67' left of centerline, up to 100' AGL/519' MSL. Multiple buildings beginning 244' from DER, 320' left of centerline, up to 21' AGL/391' MSL. Building 281' from DER, 289' right of centerline, 24' AGL/374' MSL. Multiple poles beginning 230' from DER, 203' left of centerline, up to 72' AGL/462' MSL. Multiple poles beginning 67' from DER, 210' right of centerline, up to 47' AGL/406' MSL. Vehicles on road 55' from DER, 232' right of centerline, up to 15' AGL/370' MSL.

15008

TAKEOFF MINIMUMS, (OBSTACLE) DEPARTURE PROCEDURES, AND DIVERSE VECTOR AREA (RADAR VECTORS)

FITZGERALD, GA

FITZGERALD MUNI (FZG)

TAKEOFF MINIMUMS AND (OBSTACLE)

DEPARTURE PROCEDURES

AMDT 1 11293 (FAA)

TAKEOFF MINIMUMS: **Rwys 15,33**, NA - Environmental. DEPARTURE PROCEDURE: **Rwy 1**, climbing right turn heading 035° to 1000 before turning left.

NOTE: **Rwy 1**, trees beginning abeam DER, 96' left of centerline, up to 85' AGL/464' MSL. Trees beginning 329' from DER, 10' right of centerline, up to 100' AGL/455' MSL. Power pole 414' from DER, 428' right of centerline, 21' AGL/381' MSL. Building 783' from DER, 600' left of centerline, 8' AGL/389' MSL. Power poles beginning 885' from DER, 22' left of centerline, up to 38' AGL/396' MSL.

Rwy 19, trees beginning 193' from DER, 452' left of centerline, up to 111' AGL/430' MSL. Trees beginning 612' from DER, 379' right of centerline, up to 83' AGL/398' MSL.

FLORALA, AL

FLORALA MUNI (0J4)

TAKEOFF MINIMUMS AND (OBSTACLE)

DEPARTURE PROCEDURES

ORIG 09183 (FAA)

NOTE: **Rwy 4**, trees beginning 14' from DER, 200' right of centerline, up to 100' AGL/419' MSL. Trees beginning 470' from DER, 54' left of centerline, up to 100' AGL/429' MSL. Vehicles on roadway beginning 417' from DER, left and right of centerline, up to 15' AGL/344' MSL. **Rwy 22**, trees beginning 16' from DER, 275' right of centerline, up to 100' AGL/409' MSL. Vehicles on roadway beginning 30' from DER, 298' right of centerline, up to 17' AGL/326' MSL. Trees beginning 340' from DER, 230' left of centerline, up to 100' AGL/379' MSL. Trees beginning 1164' from DER, left and right of centerline, up to 100' AGL/369' MSL.

FOLEY, AL

FOLEY MUNI (5R4)

TAKEOFF MINIMUMS AND (OBSTACLE)

DEPARTURE PROCEDURES

AMDT 1 09239 (FAA)

TAKEOFF MINIMUMS: **Rwy 36**, std. w/ min. climb of 240' per NM to 2800, or 1200-2½ for climb in visual conditions. DEPARTURE PROCEDURE: **Rwy 36**, for climb in visual conditions, cross Foley Muni airport at or above 1100 before proceeding on course.

NOTE: **Rwy 18**, fence 52' from DER, 341' right of centerline, 12' AGL/77' MSL. Trees beginning 81' from DER, 339' left of centerline, up to 81' AGL/146' MSL. Vehicles on roadway 444' from DER, left and right of centerline, up to 15' AGL/106' MSL. Tree 1173' from DER, 558' right of centerline, 86' AGL/151' MSL. Trees beginning 1815' from DER, left and right of centerline, up to 112' AGL/177' MSL. **Rwy 36**, trees beginning 68' from DER, 360' left of centerline, up to 94' AGL/159' MSL. Trees beginning 77' from DER, 365' right of centerline, up to 97' AGL/162' MSL. Trees beginning 1126' from DER, left and right of centerline, up to 97' AGL/157' MSL. Vehicles on roadway 1176' from DER, left and right of centerline, up to 15' AGL/98' MSL. Pole 1216' from DER, 408' right of centerline, 35' AGL/95' MSL. Pole 1357' from DER, 112' left of centerline, 36' AGL/101' MSL. Pole 1513' from DER, 183' left of centerline, 39' AGL/104' MSL.

08 JAN 2015 to 05 FEB 2015

08 JAN 2015 to 05 FEB 2015

TAKEOFF MINIMUMS, (OBSTACLE) DEPARTURE PROCEDURES, AND DIVERSE VECTOR AREA (RADAR VECTORS)

15008

FORT PAYNE, AL

ISBELL FIELD (4A9)

TAKEOFF MINIMUMS AND (OBSTACLE)
DEPARTURE PROCEDURES
AMDT 1 10266 (FAA)

TAKEOFF MINIMUMS: **Rwy 4**, 400-2¼ or std. w/ min. climb of 410' per NM to 1400. **Rwy 22**, 400-2 or std. w/ min. climb of 290' per NM to 1600.

DEPARTURE PROCEDURE: **Rwy 4**, climb heading 044° to 2400 before proceeding on course. **Rwy 22**, climb heading 224° to 2300 before proceeding on course.

NOTE: **Rwy 4**, trees beginning 111' from DER, 75' right of centerline, up to 100' AGL/1119' MSL. Poles beginning 879' from DER, 373' right of centerline, up to 125' AGL/1224' MSL. Obstruction light on WSK 66' from DER, 328' right of centerline, 78' AGL/957' MSL. Vehicles beginning 322' from DER, 285' right of centerline, up to 15' AGL/921' MSL. Buildings beginning 217' from DER, 426' right of centerline, up to 21' AGL/920' MSL. Fence beginning 494' from DER, 397' right of centerline, up to 6' AGL/892' MSL. GRD beginning 292' from DER, 289' right of centerline, up to 879' MSL. Trees beginning 569' from DER, 119' left of centerline, up to 100' AGL/973' MSL. Poles beginning 176' from DER, 397' left of centerline, up to 40' AGL/919' MSL. Building 935' from DER, 636' left of centerline, 39' AGL/918' MSL. Vehicles beginning 82' from DER, 359' left of centerline, up to 15' AGL/887' MSL. Fence 182' from DER, 299' left of centerline, 6' AGL/880' MSL. **Rwy 22**, trees beginning 59' from DER, 122' left of centerline, 100' AGL/1319' MSL. Poles beginning 1224' from DER, 101' left of centerline, up to 96' AGL/955' MSL. Trees beginning 46' from DER, 101' right of centerline, up to 100' AGL/972' MSL. Poles beginning 204' from DER, 17' right of centerline, up to 53' AGL/892' MSL. Vehicles beginning 137' from DER, 292' right of centerline, up to 15' AGL/869' MSL. Building 316' from DER, 476' right of centerline, 15' AGL/874' MSL.

FORT STEWART (HINESVILLE), GA

WRIGHT AAF (FORT STEWART)/ MIDCOAST RGNL (LHW)

TAKEOFF MINIMUMS AND (OBSTACLE)
DEPARTURE PROCEDURES
ORIG 09183 (FAA)

TAKEOFF MINIMUMS: **Rwys 6R, 15R, 24L, 33L**, NA-Obstacles.

NOTE: **Rwy 6L**, trees beginning 191' from DER, 207' left of centerline, up to 100' AGL/139' MSL. Trees beginning 27' from DER, 292' right of centerline, up to 100' AGL/149' MSL. **Rwy 15L**, trees beginning 201' from DER, 84' left of centerline, up to 100' AGL/129' MSL. Trees 249' from DER, 171' right of centerline, 100' AGL/139' MSL. **Rwy 24R**, trees beginning 80' from DER, 48' left of centerline, up to 100' AGL/159' MSL. Trees beginning 145' from DER, 317' right of centerline, up to 100' AGL/159' MSL. **Rwy 33R**, trees beginning 104' from DER, 101' left of centerline, up to 100' AGL/179' MSL. Trees beginning 68' from DER, 32' right of centerline, up to 100' AGL/159' MSL.

15008

TAKEOFF MINIMUMS, (OBSTACLE) DEPARTURE PROCEDURES, AND DIVERSE VECTOR AREA (RADAR VECTORS)

GADSDEN, AL

NORTHEAST ALABAMA RGNL (GAD)

TAKEOFF MINIMUMS AND (OBSTACLE)
DEPARTURE PROCEDURES
AMDT 4 12040 (FAA)

TAKEOFF MINIMUMS: **Rwy 18**, std. w/ min climb of 340' per NM to 1700 or 1300-2½ for climb in visual conditions. **Rwy 36**, std. w/ min. climb of 307' per NM to 1500 or 1300-2 ½ for climb in visual conditions.

DEPARTURE PROCEDURE: **Rwy 6**, climb heading 064° to 1300 before proceeding on course. **Rwy 18**, for climb in visual conditions cross Northeast Alabama Rgnl Airport at or above 1700 before proceeding on course. **Rwy 24**, climb heading 244° to 2000 before proceeding on course. **Rwy 36**, climb heading 003° to 1100 before proceeding on course or for climb in visual conditions cross Northeast Alabama Rgnl Airport at or above 1700 before proceeding on course.

NOTE: **Rwy 6**, trees beginning 899' from DER, 620' left of centerline, up to 100' AGL/609' MSL. **Rwy 18**, trees beginning 362' from DER, 27' left of centerline, up to 100' AGL/648' MSL. Trees beginning 1471' from DER, 220' right of centerline, up to 100' AGL/652' MSL. **Rwy 36**, trees beginning 102' from DER, 261' right of centerline, up to 100' AGL/659' MSL. Trees beginning 303' from DER, 70' left of centerline, up to 100' AGL/639' MSL. Tower 6045' from DER, 1155' right of centerline, 160' AGL/705' MSL.

GAINESVILLE, GA

LEE GILMER MEMORIAL (GVL)

TAKEOFF MINIMUMS AND (OBSTACLE)
DEPARTURE PROCEDURES
AMDT 1 07242 (FAA)

TAKEOFF MINIMUMS: **Rwy 5**, 300-1¼ or std. w/ min. climb of 311' per NM to 1600.

DEPARTURE PROCEDURE: **Rwy 5**, climb heading 055° to 2100 before proceeding on course. **Rwy 11**, climb heading 110° to 1900 before turning north. **Rwy 23**, climb heading 224° to 2700 before turning south.

NOTE: **Rwy 5**, multiple trees beginning 662' from DER, 78' right of centerline, up to 93' AGL/1330' MSL. Multiple trees and pole beginning 301' from DER, on centerline, up to 137' AGL/1361' MSL. Chimney 2298' from DER, 618' left of centerline, 131' AGL/1349' MSL. Building 73' from DER, 356' right of centerline, 18' AGL/1252' MSL. Tower 6415' from DER, 404' left of centerline, 206' AGL/1426' MSL. Tower 6538' from DER, 486' left of centerline, 214' AGL/1428' MSL. **Rwy 11**, trees 770' from departure end of runway, on centerline, 60' AGL/1317' MSL. **Rwy 23**, multiple trees beginning 443' from DER, 220' right of centerline, up to 98' AGL/1319' MSL. Trees 415' from DER, 304' left of centerline, 86' AGL/1291' MSL. **Rwy 29**, trees 1256' from DER, on centerline, 52' AGL/1306' MSL.

08 JAN 2015 to 05 FEB 2015

08 JAN 2015 to 05 FEB 2015

TAKEOFF MINIMUMS, (OBSTACLE) DEPARTURE PROCEDURES, AND DIVERSE VECTOR AREA (RADAR VECTORS)

15008

GENEVA, AL

GENEVA MUNI (33J)

TAKEOFF MINIMUMS AND (OBSTACLE)
DEPARTURE PROCEDURES
ORIG 14205 (FAA)

DEPARTURE PROCEDURE: **Rwy 11**, climb heading 111° to 2000 before turning right. **Rwy 29**, climb heading 291° to 1300 before turning left.

NOTE: **Rwy 11**, vehicle on road 238' from DER, 254' left of course, 17' AGL/125' MSL. Trees 306' from DER, 305' left of centerline, up to 100' AGL/198' MSL. Trees 193' from DER, 168' right of centerline, up to 100' AGL/196' MSL. **Rwy 29**, trees 407' from DER, 174' left of centerline, up to 100' AGL/189' MSL. Trees 1393' from DER, left and right of centerline, up to 100' AGL/236' MSL.

GREENSBORO, GA

GREENE COUNTY RGNL (3J7)

TAKEOFF MINIMUMS AND (OBSTACLE)
DEPARTURE PROCEDURES
AMDT 3 10210 (FAA)

TAKEOFF MINIMUMS: **Rwy 25**, 400-2.

NOTE: **Rwy 7**, trees beginning 438' from DER, 8' right of centerline, up to 100' AGL/759' MSL. Vehicle on roadway 485' from DER, 603' left of centerline, 15' AGL/714' MSL. Train on tracks 623' from DER, 661' left of centerline, 23' AGL/722' MSL. Trees beginning 624' from DER, 36' left of centerline, up to 100' AGL/779' MSL. **Rwy 25**, vehicle on road, 7' from DER, 318' right of centerline, 15' AGL/695' MSL. Trees 2555' from DER, 208' right of centerline, up to 100' AGL/779' MSL. Vehicle on roadway, 86' from DER, 190' left of centerline, 15' AGL/690' MSL. trees 96' from DER, 76' left of centerline, up to 100' AGL/799' MSL. Water tower 2396' from DER, 1070' left of centerline, 199' AGL/870' MSL.

GREENVILLE, AL

MAC CRENSHAW MEMORIAL (PRN)

TAKEOFF MINIMUMS AND (OBSTACLE)
DEPARTURE PROCEDURES
AMDT 1 04274 (FAA)

DEPARTURE PROCEDURE: **Rwy 14**, climb via heading 142° to 900 before proceeding on course, **Rwy 32**, climb via heading 322° to 900 before proceeding on course.

NOTE: **Rwy 14**, tower 2934' from DER, 565' right of centerline, 104' AGL/528' MSL. tree 1400' from DER, on centerline, 60' AGL/485' MSL.

GRIFFIN, GA

GRIFFIN-SPALDING COUNTY (6A2)

TAKEOFF MINIMUMS AND (OBSTACLE)
DEPARTURE PROCEDURES
AMDT 1 12208 (FAA)

NOTE: **Rwy 14**, trees beginning 129' from DER, 261' right of centerline, up to 89' AGL/989' MSL. Pole 168' from DER, 222' left of centerline, 35' AGL/ 961' MSL. **Rwy 32**, trees beginning 456' from DER, 158' left of centerline, up to 100' AGL/ 1062' MSL. Trees beginning 750' from DER, 78' right of centerline, up to 100' AGL/ 1087' MSL. Tower 1379' from DER, 667' right of centerline, 119' AGL/ 1019' MSL. Pole 1831' from DER, 421' left of centerline, 75' AGL/ 1022' MSL.

15008

TAKEOFF MINIMUMS, (OBSTACLE) DEPARTURE PROCEDURES, AND DIVERSE VECTOR AREA (RADAR VECTORS)

GULF SHORES, AL

JACK EDWARDS (JKA)

TAKEOFF MINIMUMS AND (OBSTACLE)
DEPARTURE PROCEDURES
ORIG 07074 (FAA)

NOTE: **Rwy 17**, multiple trees beginning 1300' from DER, on centerline, up to 55' AGL/67' MSL. **Rwy 27**, multiple trees beginning 837' from DER, 66' left of centerline, up to 99' AGL/103' MSL. Multiple trees beginning 829' from DER, 175' right of centerline, up to 99' AGL/103' MSL. Multiple light poles beginning 1243' from DER, 14' right of centerline, up to 46' AGL/50' MSL. Light pole beginning 1403' from DER, 137' left of centerline, up to 47' AGL/51' MSL. **Rwy 35**, multiple trees beginning 1650' from DER, on centerline, up to 50' AGL/67' MSL.

GUNTERSVILLE, AL

GUNTERSVILLE MUNI-JOE STARNES FIELD (8A1)

TAKEOFF MINIMUMS AND (OBSTACLE)
DEPARTURE PROCEDURES
AMDT 1 07214 (FAA)

TAKEOFF MINIMUMS: **Rwy 3**, std. w/ min. climb of 334' per NM to 2500 or 1100-2½ for climb in visual conditions. **Rwy 21**, std. w/ min. climb of 496' per NM to 2500, or 300-1¼ w/ min. climb of 274' per NM to 1600, or 1100-2½ for climb in visual conditions.

DEPARTURE PROCEDURE: **Rwy 3**, climb heading 027° to 2500 before proceeding on course or for climb in visual conditions cross Guntersville Muni-Joe Starnes Field Airport at or above 1600 before proceeding on course. **Rwy 21**, climb heading 207° to 2500 before proceeding on course or for climb in visual conditions cross Guntersville Muni-Joe Starnes Field Airport at or above 1600 before proceeding on course.

NOTE: **Rwy 3**, multiple trees beginning 2299' from DER, 27' left of centerline, up to 100' AGL/1399' MSL. Tower 1.6 NM from DER, 2465' left of centerline, 208' AGL/851' MSL. **Rwy 21**, multiple trees beginning 151' from DER, 362' left of centerline, up to 100' AGL/759' MSL. Multiple trees beginning 3613' from DER, 152' right of centerline, up to 100' AGL/859' MSL.

HALEYVILLE, AL

POSEY FIELD(1M4)

TAKEOFF MINIMUMS AND (OBSTACLE)
DEPARTURE PROCEDURES
ORIG-A 10182 (FAA)

NOTE: **Rwy 18**, trees beginning 2372' from DER, 1009' left of centerline, up to 78' AGL/1052' MSL. Trees beginning 78' from DER, 257' right of centerline, up to 82' AGL/1021' MSL. **Rwy 36**, trees beginning 7' from DER, 276' left of centerline, up to 75' AGL/1005' MSL. Trees beginning 383' from DER, 277' right of centerline, up to 73' AGL/1003' MSL. Fence 204' from DER, 202' right of centerline, 6' AGL/936' MSL.

08 JAN 2015 to 05 FEB 2015

08 JAN 2015 to 05 FEB 2015

**TAKEOFF MINIMUMS, (OBSTACLE) DEPARTURE PROCEDURES, AND
DIVERSE VECTOR AREA (RADAR VECTORS)**

15008

HAMILTON, AL

MARION COUNTY-RANKIN FITE (HAB)

TAKEOFF MINIMUMS AND (OBSTACLE)

DEPARTURE PROCEDURES

AMDT 1 11349 (FAA)

TAKEOFF MINIMUMS: **Rwy 18**, 400-2½ or std. w/min. climb of 390' per NM to 800. **Rwy 36**, 400 - 2 ½ or std. w/min. climb of 370' per NM to 900.

DEPARTURE PROCEDURE: **Rwy 18**, climb heading 181° to 900 before turning left. **Rwy 36**, climb heading 001° to 1000 before turning left.

NOTE: **Rwy 18**, trees beginning 53' from DER, left and right of centerline, up to 100' AGL/699' MSL. Trees beginning 1.5 NM from DER, 2172' left of centerline, up to 100' AGL/719' MSL. **Rwy 36**, trees beginning 122' from DER, left and right of centerline, up to 100' AGL/573' MSL. Building 2368' from DER, 411' right of centerline, 50' AGL/501' MSL. Vehicles on roadway beginning 2511' from DER, 1124' left of centerline, up to 17' AGL/516' MSL. Pole 3009' from DER, 309' left of centerline, 70' AGL/569' MSL. Towers and trees beginning 1.1 NM from DER, left and right of centerline, up to 115' AGL/779' MSL.

HANCHEY AHP (KHEY)

FORT RUCKER, AL

TAKEOFF MINIMUMS AND (OBSTACLE)

DEPARTURE PROCEDURES

ORIG, 08325

Rwy 17, 35 standard.

All Helipads NA - ATC.

DEPARTURE PROCEDURE: **Rwy 17**: Climb hdg 182° to 800 before proceeding on course. **Rwy 35**: Climb hdg 002° to 800 before proceeding on course.

HARTSELLE, AL

HARTSELLE-MORGAN COUNTY RGNL

(5M0)

TAKEOFF MINIMUMS AND (OBSTACLE)

DEPARTURE PROCEDURES

AMDT 2 07186 (FAA)

TAKEOFF MINIMUMS: **Rwy 36**, 500-2½ or std. with a min. climb of 260' per NM to 1200.

NOTE: **Rwy 18**, trees abeam DER, 300' left of centerline, up to 100' AGL/739' MSL. Multiple buildings 150' from DER, 432' left of centerline, up to 40' AGL/679' MSL. Multiple trees 265' from DER, 133' right of centerline, up to 100' AGL/699' MSL. **Rwy 36**, trees 3089' from DER, 426' left of centerline, 100' AGL/779' MSL. Trees 1139' from DER, 98' right of centerline, 45' AGL/673' MSL. Tower 1.85 NM from DER, 2953' left of centerline, 249' AGL/928' MSL. Multiple buildings beginning 755' from DER, 775' right of centerline, up to 40' AGL/689' MSL. Tower 2.15 NM from DER, 295' left of centerline, 303' AGL/990' MSL.

HAZLEHURST, GA

HAZLEHURST (AZE)

TAKEOFF MINIMUMS AND (OBSTACLE)

DEPARTURE PROCEDURES

ORIG 08157 (FAA)

NOTE: **Rwy 14**, trees beginning 813' from DER, 328' left of centerline, up to 100' AGL/369' MSL. **Rwy 32**, trees beginning 46' from DER, 200' left of centerline, up to 100' AGL/299' MSL. Trees 1356' from DER 574' right of centerline, up to 100' AGL/309' MSL.

HEADLAND, AL

HEADLAND MUNI (0J6)

TAKEOFF MINIMUMS AND (OBSTACLE)

DEPARTURE PROCEDURES

ORIG 04162 (FAA)

NOTE: **Rwy 9**, trees 275' from DER, 90' left of centerline, 15' AGL/369' MSL. **Rwy 27**, road and vehicle 625' from DER, 500' right of centerline, 17' AGL/376' MSL.

HOMERVILLE, GA

HOMERVILLE (HOE)

TAKEOFF MINIMUMS AND (OBSTACLE)

DEPARTURE PROCEDURES

ORIG 10210 (FAA)

DEPARTURE PROCEDURE: **Rwy 14**, climb heading 138° to 700 before proceeding on course.

NOTE: **Rwy 14**, vehicle on road 56' from DER, 443' right of centerline, up to 15' AGL/200' MSL. Vehicle on road 161' from DER, 532' left of centerline, up to 15' AGL/197' MSL. Trees beginning 114' from DER, 492' right of centerline, up to 100' AGL/279' MSL. Trees beginning 2023' from DER, 183' left of centerline, up to 93' AGL/268' MSL. Tower 2807' from DER, 446' left of centerline, 111' AGL/287' MSL. **Rwy 32**, vehicle on road 270' from DER, 562' right of centerline, up to 15' AGL/200' MSL. Trees beginning 322' from DER, 323' right of centerline, up to 100' AGL/289' MSL. Trees beginning 129' from DER, 395' left of centerline, up to 100' AGL/299' MSL.

HUNTER AAF (KSVN)

AMDT 2 03191

SAVANNAH, GA

TAKEOFF MINIMUMS AND (OBSTACLE)

DEPARTURE PROCEDURES

Rwy 28, 300-1*

* Or standard with minimum climb of 340/NM to 400.

Rwy 28, climbing left turn hdg 230° to 1700 before proceeding on course.

15008

**TAKEOFF MINIMUMS, (OBSTACLE) DEPARTURE PROCEDURES, AND
DIVERSE VECTOR AREA (RADAR VECTORS)**

TAKEOFF MINIMUMS, (OBSTACLE) DEPARTURE PROCEDURES, AND DIVERSE VECTOR AREA (RADAR VECTORS)

15008

HUNTSVILLE, AL

HUNTSVILLE INTL-CARL T. JONES FIELD
(HSV)

TAKEOFF MINIMUMS AND (OBSTACLE)
DEPARTURE PROCEDURES

AMDT 4 13346 (FAA)

DEPARTURE PROCEDURE: **Rwy 36R**, climb heading
002° to 1300 before turning right.

NOTE: **Rwy 18L**, trees beginning 1088' from DER,
710' left of centerline, up to 100' AGL/660' MSL. **Rwy
36L**, trees beginning 1911' from DER, 904' right of
centerline, up to 100' AGL/719' MSL. Trees beginning
3693' from DER, 1392' left of centerline, up to 100'
AGL/749' MSL. **Rwy 36R**, fence 383' from DER, 602'
right of centerline, up to 11' AGL/620' MSL. Trees
beginning 1312' from DER, 799' right of centerline, up
to 100' AGL/729' MSL.

HUNTSVILLE EXECUTIVE AIRPORT/TOM
SHARP JR. FIELD (MDQ)

TAKEOFF MINIMUMS AND (OBSTACLE)
DEPARTURE PROCEDURES

AMDT 4A 14261 (FAA)

TAKEOFF MINIMUMS: **Rwy 18**, std. w/min. climb of
350' per NM to 3200. **Rwy 36**, 200-1½ or std. w/min.
climb of 240' per NM to 1000.

DEPARTURE PROCEDURE: **Rwy 36**, climb to 1700
before turning on course.

NOTE: **Rwy 18**, tree 5' from DER, 442' right of
centerline, 5' AGL/765' MSL. Multiple trees beginning
816' from DER, 551' right of centerline, up to 80'
AGL/818' MSL. Multiple trees beginning 5408' from
DER, 126' right of centerline, up to 132' AGL/955'
MSL. **Rwy 36**, REIL 10' from DER, 124' left of
centerline, 5' AGL/721' MSL. REIL 10' from DER, 124'
right of centerline, 3' AGL/721' MSL. Vehicles on road
beginning 153' from DER, 491' right of centerline up to
15' AGL/725' MSL. Multiple trees beginning 591' from
DER, 476' right of centerline, up to 76' AGL/786' MSL.
Multiple trees beginning 788' from DER, 673' left of
centerline, up to 84' AGL/794' MSL. Multiple trees
beginning 1 NM from DER, 11' right of centerline, up to
104' AGL/924' MSL. Multiple trees beginning 1.1 NM
from DER, 44' left of centerline, up to 129' AGL/931'
MSL

JACKSON, AL

JACKSON MUNI (4R3)

TAKEOFF MINIMUMS AND (OBSTACLE)
DEPARTURE PROCEDURES

ORIG 10154 (FAA)

TAKEOFF MINIMUMS: **Rwy 1**, std. w/min. climb of
252' per NM to 1000 or 1100-2½ for climb in visual
conditions. **Rwy 19**, 300-1½ ceiling and visibility to
allow see and avoid operation in lieu of required climb
gradient for standard minima.

DEPARTURE PROCEDURE: **Rwy 1**, for climb in visual
conditions: cross Jackson Muni airport at or above
1000 MSL before proceeding on course.

NOTE: **Rwy 1**, trees beginning at DER, 400' left/right of
centerline, up to 100' AGL/134' MSL. **Rwy 19**, trees
beginning at DER, 400' left/right of centerline, up to
100' AGL/279' MSL.

JASPER, AL

WALKER COUNTY-BEVILL FIELD (JFX)

TAKEOFF MINIMUMS AND (OBSTACLE)
DEPARTURE PROCEDURES

AMDT 1 12152 (FAA)

TAKEOFF MINIMUMS: **Rwy 27**, 300-1¼ or std. w/min.
climb of 259' per NM to 800.

NOTE: **Rwy 9**, trees beginning 614' from DER, 132' left of
centerline, up to 95' AGL/574' MSL. Vehicles on road,
pole, and trees beginning 28' from DER, 88' right of
centerline, up to 100' AGL/599' MSL. **Rwy 27**, vehicles
on road and trees beginning 7' from DER, 165' left of
centerline, up to 95' AGL/572' MSL. Trees beginning 55'
from DER, 24' right of centerline, up to 93' AGL/628'
MSL. Trees 4728' from DER, 1559' right of centerline, up
to 80' AGL/639' MSL. Trees 5615' from DER, 1882' right
of centerline, up to 112' AGL/651' MSL. Trees 5765' from
DER, 1882' right of centerline, up to 108' AGL/647' MSL.

JASPER, GA

PICKENS COUNTY (JZP)

TAKEOFF MINIMUMS AND (OBSTACLE)
DEPARTURE PROCEDURES

AMDT 1 07298 (FAA)

TAKEOFF MINIMUMS: **Rwy 34**, 300-1 or std. w/min.
climb of 255' per NM to 1800, or alternatively, w/
standard takeoff minimums and a normal 200'/NM climb
gradient, takeoff must occur no later than 2100' prior to
departure end.

DEPARTURE PROCEDURE: **Rwy 16**, climb heading 163°
to 3000 before turning. **Rwy 34**, climb heading 343° to
3100 before turning.

NOTE: **Rwy 16**, numerous trees beginning 44' from DER,
338' left of centerline, up to 65' AGL/1565' MSL. Trees
127' from DER, 398' right of centerline, up to 61'
AGL/1581' MSL. **Rwy 34**, pole and numerous trees
beginning 141' from DER, 25' right of centerline, up to
112' AGL/1611' MSL. Numerous trees beginning 394'
from DER, 37' left of centerline, up to 79' AGL/1654'
MSL.

JEFFERSON, GA

JACKSON COUNTY (19A)

TAKEOFF MINIMUMS AND (OBSTACLE)
DEPARTURE PROCEDURES

AMDT 2 09295 (FAA)

DEPARTURE PROCEDURE: **Rwy 17**, climb heading
168° to 2500 before turning. **Rwy 35**, climb heading
348° to 2500 before turning.

NOTE: **Rwy 17**, scrub and trees beginning 61' from DER,
67' right of centerline up to 117' AGL/997' MSL. Pylons
and trees beginning 190' from DER, 167' left of
centerline, up to 99' AGL/999' MSL. **Rwy 35**, trees
beginning 0' from DER, 171' right and 297' left of
centerline up to 100' AGL/1019' MSL.

JEKYLL ISLAND, GA

JEKYLL ISLAND (09J)

TAKEOFF MINIMUMS AND (OBSTACLE)
DEPARTURE PROCEDURES

ORIG 08045 (FAA)

NOTE: **Rwy 18**, Vehicle on road beginning 9' from DER,
411' left of centerline, up to 15' AGL/42' MSL. Trees 200'
from DER, 159' left of centerline, 50' AGL/61' MSL.

15008

TAKEOFF MINIMUMS, (OBSTACLE) DEPARTURE PROCEDURES, AND DIVERSE VECTOR AREA (RADAR VECTORS)

TAKEOFF MINIMUMS, (OBSTACLE) DEPARTURE PROCEDURES, AND DIVERSE VECTOR AREA (RADAR VECTORS)

15008

JESUP, GA

JESUP-WAYNE COUNTY (JES)
TAKEOFF MINIMUMS AND (OBSTACLE)
DEPARTURE PROCEDURES
ORIG 09295 (FAA)

NOTE: **Rwy 11**, trees beginning 52' from DER, 497' left of centerline, up to 100' AGL/154' MSL. Trees beginning 312' from DER, 294' right of centerline, up to 100' AGL/154' MSL. **Rwy 29**, trees beginning 1811' from DER, 181' left of centerline, up to 100' AGL/188' MSL. Trees beginning 24' from DER, 98' right of centerline, up to 100' AGL/190' MSL.

LAFAYETTE, GA

BARWICK LAFAYETTE (9A5)
TAKEOFF MINIMUMS AND (OBSTACLE)
DEPARTURE PROCEDURES
AMDT 1 09015 (FAA)

TAKEOFF MINIMUMS: **Rwy 20**, 500-3 or std. w/ min. climb of 465' per NM to 1400.

DEPARTURE PROCEDURE: **Rwy 2**, climb heading 022° to 2200 before proceeding on course. **Rwy 20**, climb heading 202° to 2300 before proceeding on course.

NOTE: **Rwy 2**, train on track 39' from DER, 241' left of centerline, 23' AGL/809' MSL. Building 418' from DER, 191' left of centerline, 40' AGL/849' MSL. Trees beginning 4420' from DER, 1171' left of centerline, up to 100' AGL/919' MSL. Trees beginning 5609' from DER, 372' right of centerline, up to 100' AGL/919' MSL. **Rwy 20**, train on track 46' from DER, 323' right of centerline, 23' AGL/809' MSL. Buildings beginning 1602' from DER, 907' right of centerline, up to 25' AGL/825' MSL. Vehicle on road 1021' from DER, 104' left of centerline, 15' AGL/802' MSL. Train on track 762' from DER, on centerline, 23' AGL/803' MSL.

LAGRANGE, GA

LAGRANGE-CALLAWAY (LGC)
TAKEOFF MINIMUMS AND (OBSTACLE)
DEPARTURE PROCEDURES
AMDT 1A 11097 (FAA)

TAKEOFF MINIMUMS: **Rwy 3**, 400-1½ or std. w/min. climb of 425' per NM to 1200. **Rwy 13**, 300-1. **Rwy 21**, 300-1 or std. w/ min. climb of 320' per NM to 1000. **Rwy 31**, 300-1½ or std. w/ min. climb of 260' per NM to 1000.

DEPARTURE PROCEDURE: **Rwy 3**, building with tower 1 NM from DER, 1124' right of centerline, 150' AGL/885' MSL. **Rwy 13**, trees beginning 5' from DER, 489' right of centerline, up to 100' AGL/754' MSL. **Rwy 21**, trees beginning 130' from DER, 242' left of centerline, up to 91' AGL/850' MSL. Trees beginning 1121' from DER, 22' right of centerline, up to 66' AGL/805' MSL. **Rwy 31**, climb heading 307° to 1500 before turning South. Trees beginning 165' from DER, 158' right of centerline, up to 91' AGL/890' MSL. Trees beginning 538' from DER, 165' left of centerline, up to 98' AGL/857' MSL.

15008

TAKEOFF MINIMUMS, (OBSTACLE) DEPARTURE PROCEDURES, AND DIVERSE VECTOR AREA (RADAR VECTORS)

LANETT, AL

LANETT MUNI (7A3)
TAKEOFF MINIMUMS AND (OBSTACLE)
DEPARTURE PROCEDURES
ORIG 86128 (FAA)

TAKEOFF MINIMUMS: **Rwy 8**, 300-1 or std. with a min. climb of 500' per NM to 900.

LAWRENCEVILLE, GA

GWINNETT COUNTY-BRISCOE FIELD
(LZU)

TAKEOFF MINIMUMS AND (OBSTACLE)
DEPARTURE PROCEDURES
AMDT 6 11293 (FAA)

TAKEOFF MINIMUMS: **Rwy 25**, 300-1 or std. w/min. climb of 330' per NM to 1400.

DEPARTURE PROCEDURE: **Rwy 7**, climb heading 069° to 2600 before turning left.

NOTE: **Rwy 7**, trees beginning 724' from DER, left and right of centerline, up to 110' AGL/1118' MSL. Rods on floodlights beginning 2619' from DER, 686' right of centerline, up to 143' AGL/11 04' MSL. **Rwy 25**, vehicle on roadway beginning 1187' from DER, left and right of centerline, up to 15' AGL/1114' MSL. Poles and antennas beginning 1221' from DER, left and right of centerline, up to 167' AGL/1159' MSL. Trees beginning 1244' from DER, left and right of centerline, up to 88' AGL/1166' MSL. Mast 5008' from DER, 1147' left of centerline, 207' AGL/1268' MSL. Tower 5030' from DER, 1141' left of centerline, 187' AGL/1268' MSL.

LAWSON AAF, (KLSF)

FORT BENNING (COLUMBUS), GA TAKEOFF
MINIMUMS AND (OBSTACLE) DEPARTURE
PROCEDURES
07158

Rwy 15, Standard
Rwy 33, 400-2*

*Or standard with minimum climb of 300/NM to 1000. **Rwy 15**, climb via heading 150° to 2000 before turning left.

Rwy 33, Climb via heading 330° to 1000 before turning right.

TAKEOFF OBSTACLES:

NOTE: **Rwy 15**, trees 1800 feet from DER, 162 feet left of centerline, 54 feet AGL/280 feet MSL.

NOTE: **Rwy 33**, tree 1.86 NM from DER, 3462 feet left of centerline, 100 feet AGL/569 feet MSL.

LOWE AHP (KLOR)

FORT RUCKER, AL
TAKEOFF MINIMUMS AND (OBSTACLE)
DEPARTURE PROCEDURES
ORIG A, 11349

Helipad WHISKEY, ECHO, BRAVO standard. all other helipads NA.

DEPARTURE PROCEDURE: **Helipad WHISKEY**: hover at 274' MSL/30' AGL, then climb hdg 183° to 700 before proceeding on course. **Helipad ECHO**: climb hdg 125° to 700 before proceeding on course. **Helipad BRAVO**: Hover at 318' MSL/35' AGL, then climb hdg 183° to 700 before proceeding on course.

08 JAN 2015 to 05 FEB 2015

TAKEOFF MINIMUMS, (OBSTACLE) DEPARTURE PROCEDURES, AND DIVERSE VECTOR AREA (RADAR VECTORS)

15008

MACON, GA

MACON DOWNTOWN (MAC)

TAKEOFF MINIMUMS AND (OBSTACLE) DEPARTURE PROCEDURES

AMDT 6 13094 (FAA)

TAKE OFF MINIMUMS: **Rwy 15**, 400-1¼ or std. w/min. climb of 601' per NM to 1000. **Rwy 33**, 200-¾ or std. w/min. climb of 312' per NM to 700.

DEPARTURE PROCEDURE: **Rwy 10**, Climb heading 099° to 1000 before proceeding on course. **Rwy 15**, climb heading 150° to 1300 before turning south.

NOTE: **Rwy 10**, trees 8' from DER, 143' left of centerline, up to 18' AGL/429' MSL. Trees beginning 89' from DER, 392' left of centerline, up to 50' AGL/460' MSL. Trees beginning 358' from DER, 357' left of centerline, up to 75' AGL/486' MSL. Trees beginning 171' from DER, 1' right of centerline, up to 73' AGL/472' MSL. Trees beginning 3509' from DER, 3' right of centerline, up to 69' AGL/538' MSL. Trees beginning 4120' from DER, 3' left of centerline, up to 98' AGL/557' MSL. **Rwy 15**, tower 1.0 NM from DER, 1558' left of centerline, 425' AGL/806' MSL. **Rwy 28**, vehicles on road beginning 53' from DER, 94' left of centerline, up to 15' AGL/414' MSL. Trees beginning 149' from DER, 40' left of centerline, up to 30' AGL/441' MSL. Trees beginning 863' from DER, 684' left of centerline, up to 50' AGL/453' MSL. Trees beginning 132' from DER, 5' right of centerline, up to 35' AGL/445' MSL. **Rwy 33**, tower 1449' from DER, 445' left of centerline, 59' AGL/511' MSL. Tree 1643' from DER, 911' left of centerline, 81' AGL/520' MSL. Tree 1821' from DER, 560' left of centerline, 69' AGL/518' MSL.

MIDDLE GEORGIA RGNL (MCN)

TAKEOFF MINIMUMS AND (OBSTACLE) DEPARTURE PROCEDURES

AMDT 3 10070 (FAA)

TAKEOFF MINIMUMS: **Rwy 5**, std. w/ min. climb of 210' per NM to 1500, or 1000-2½ for climb in visual conditions.

DEPARTURE PROCEDURE: **Rwy 5**, for climb in visual conditions cross Middle Georgia Rgnl airport at or above 1200 before proceeding on course.

NOTE: **Rwy 5**, trees and poles beginning 40' from DER, 59' left of centerline, up to 86' AGL/436' MSL. Trees, towers, and aircraft equipment beginning 112' from DER, 8' right of centerline, up to 82' AGL/432' MSL. **Rwy 13**, trees beginning 280' from DER, 279' left of centerline, up to 89' AGL/429' MSL. Trees beginning 2153' from DER, 136' right of centerline, up to 81' AGL/411' MSL. **Rwy 23**, trees beginning 69' from DER, left and right of centerline, up to 113' AGL/383' MSL.

Rwy 31, trees beginning 636' from DER, 209' right of centerline, up to 98' AGL/398' MSL. Trees beginning 925' from DER, 54' left of centerline, up to 90' AGL/440' MSL.

MADISON, GA

MADISON MUNI (52A)

TAKEOFF MINIMUMS AND (OBSTACLE) DEPARTURE PROCEDURES

ORIG 11069 (FAA)

NOTE: **Rwy 14**, fences beginning abeam DER, 130' left and 269' right of centerline, 9' AGL/703' MSL. Building abeam DER, 424' right of centerline, 30' AGL/729' MSL. Vehicles on roadway abeam DER, 212' left of centerline, up to 15' AGL/714' MSL. Fence 200' from DER, left and right of centerline, 9' AGL/703' MSL. Vehicles on roadway 210' from DER, left and right of centerline, up to 15' AGL/714' MSL. Trains beginning 276' from DER, left and right of centerline, up to 23' AGL/722' MSL. Trees beginning 463' from DER. 468' left of centerline, up to 100' AGL/819' MSL. Building 643' from DER, 440' left of centerline, 20' AGL/719' MSL. Trees beginning 752' from DER, 213' right of centerline, up to 100' AGL/799' MSL. Power lines beginning 1298' from DER, 246' left of centerline, up to 100' AGL/779' MSL. **Rwy 32**, trees beginning abeam DER, 250' right of centerline, up to 100' AGL/719' MSL. Trees beginning abeam DER, 300' left of centerline, up to 100' AGL/719' MSL. Trees beginning 680' from DER, left and right of centerline, up to 100' AGL/719' MSL.

MARION, AL

VAIDEN FIELD (A08)

TAKEOFF MINIMUMS AND (OBSTACLE) DEPARTURE PROCEDURES

ORIG 12208 (FAA)

NOTE: **Rwy 16**, fences beginning 635' from DER, 225' right of centerline, up to 100' AGL/309' MSL. Trees beginning 2119' from DER, 1057' left of centerline, up to 100' AGL/289' MSL. **Rwy 34**, trees beginning abeam threshold, 191' left of centerline, up to 100' AGL/349' MSL. Trees beginning 2128' from DER, 978' right of centerline, up to 100' AGL/349' MSL.

MAXWELL AFB (KMXF)

MONTGOMERY, AL

TAKEOFF MINIMUMS AND (OBSTACLE) DEPARTURE PROCEDURES

AMDT 3, 09183

Rwy 15, 200-1¼

With minimum climb of 280 ft/NM to 1400.*

* Or standard with minimum climb of 330 ft/NM to 1400.

TAKEOFF OBSTACLES: **Rwy 15**: Tree Canopy 1943' from DER, 682' right of centerline, 67' AGL/233' MSL. Tree Canopy 2121' from DER, 1062' left of centerline, 76' AGL/236' MSL. Pylon 4607' from DER, 2118' left of centerline, 39' AGL/ 225' MSL. Pylon 4588' from DER, 1798' left of centerline, 79' AGL/264' MSL.

08 JAN 2015 to 05 FEB 2015

08 JAN 2015 to 05 FEB 2015

15008

TAKEOFF MINIMUMS, (OBSTACLE) DEPARTURE PROCEDURES, AND DIVERSE VECTOR AREA (RADAR VECTORS)

**TAKEOFF MINIMUMS, (OBSTACLE) DEPARTURE PROCEDURES, AND
DIVERSE VECTOR AREA (RADAR VECTORS)**

15008

MC RAE, GA**TELFAIR-WHEELER (MQW)**

TAKEOFF MINIMUMS AND (OBSTACLE)
DEPARTURE PROCEDURES
AMDT 1 10210 (FAA)

DEPARTURE PROCEDURE: **Rwy 21**, climb via heading 206° to 700 before proceeding on course.
NOTE: **Rwy 3**, trees beginning 1260' from DER, 207' left of centerline, up to 100' AGL/303' MSL. Vehicle on roadway 2735' from DER, 720' right of centerline, 15' AGL/264' MSL. **Rwy 21**, vehicles on roadway beginning abeam DER, 301' left of centerline, up to 15' AGL/224' MSL. Trees beginning 79' from DER, 457' left of centerline, up to 100' AGL/266' MSL. Silo 1665' from DER, 927' left of centerline, 100' AGL/307' MSL. Vehicles on roadway beginning 125' from DER, 523' right of centerline, up to 15' AGL/234' MSL. Trees beginning 543' from DER, 397' right of centerline, up to 100' AGL/276' MSL.

METTER, GA**METTER MUNI (MHP)**

TAKEOFF MINIMUMS AND (OBSTACLE)
DEPARTURE PROCEDURES
ORIG 08157 (FAA)

NOTE: **Rwy 10**, vehicles on interstate, abeam DER, 315' left of centerline, up to 17' AGL/216' MSL. Trees beginning 1506' from DER, 866' left of centerline, up to 100' AGL/289' MSL. Trees beginning 2349' from DER, 613' right of centerline, up to 100' AGL/289' MSL. **Rwy 28**, trees beginning abeam DER, left and right of centerline, up to 100' AGL/289' MSL. Vehicles on interstate, abeam DER, 295' right of centerline, up to 17' AGL/196' MSL.

MILLEDGEVILLE, GA**BALDWIN COUNTY (MLJ)**

TAKEOFF MINIMUMS AND (OBSTACLE)
DEPARTURE PROCEDURES
AMDT 1 10210 (FAA)

TAKEOFF MINIMUMS: **Rwy 28**, 300-1 or std. w/ min. climb of 330' per NM to 700.
DEPARTURE PROCEDURE: **Rwy 10**, climb heading 096° to 1000 before turning. **Rwy 28**, climb heading 276° to 1400 before turning right.
NOTE: **Rwy 10**, trees beginning 67' from DER, 87' right of centerline, up to 100' AGL/449' MSL. Utility poles beginning 196' from DER, 268' right of centerline, up to 30' AGL/372' MSL. Trees beginning 62' from DER, 298' left of centerline, up to 100' AGL/445' MSL. Utility poles beginning 135' from DER, 381' left of centerline, up to 30' AGL/380' MSL. Multiple structures beginning 242' from DER, 523' left of centerline up to 19' AGL/369' MSL. **Rwy 28**, trees beginning 12' from DER, 64' right of centerline, up to 100' AGL/500' MSL. Terrain 729' from DER, 495' right of centerline, 437' MSL. Trees beginning 515' from DER, 59' left of centerline, up to 100' AGL/534' MSL.

MILLEN, GA**MILLEN (2J5)**

TAKEOFF MINIMUMS AND (OBSTACLE)
DEPARTURE PROCEDURES
ORIG 03079 (FAA)

NOTE: **Rwy 17**, trees 1600' from DER, on centerline, 92' AGL/315' MSL. **Rwy 35**, trees 250' from DER, 50' right of centerline, 70' AGL/308' MSL.

MOBILE, AL**MOBILE DOWNTOWN (BFM)**

TAKEOFF MINIMUMS AND (OBSTACLE)
DEPARTURE PROCEDURES
AMDT 1 09127 (FAA)

TAKEOFF MINIMUMS: **Rwy 14**, 400-2¼ or std. w/ min. climb of 244' per NM to 500.
DEPARTURE PROCEDURE: **Rwy 36**, climb heading 001° to 900 before turning right.
NOTE: **Rwy 18**, trees beginning 1453' from DER, 54' right of centerline, up to 100' AGL/129' MSL. Trees beginning 2646' from DER, 120' left of centerline, up to 73' AGL/102' MSL. **Rwy 32**, sign 2780' from DER, 1041' left of centerline, 109' AGL/119' MSL, trees beginning 847' from DER, 35' right of centerline, up to 100' AGL/109' MSL, trees beginning 1089' from DER, 19' left of centerline, up to 100' AGL/107' MSL. **Rwy 36**, poles beginning 1231' from DER, 319' right of centerline, up to 49' AGL/69' MSL, trees beginning 467' from DER, 325' right of centerline, up to 55' AGL/84' MSL.

MOBILE RGNL (MOB)

TAKEOFF MINIMUMS AND (OBSTACLE)
DEPARTURE PROCEDURES
AMDT 1A 14149 (FAA)

NOTE: **Rwy 15**, tree 1758' from DER, 886' right of centerline, 79' AGL/270' MSL. Tree 1987' from DER, 856' left of centerline, 73' AGL/277' MSL. Tree 2102' from DER, 861' right of centerline, 78' AGL/269' MSL. Tree 2131' from DER, left of centerline, 76' AGL/280' MSL. **Rwy 18**, multiple trees beginning 1597' from DER, 15' left of centerline, up to 69' AGL/273' MSL. Multiple trees beginning 1671' from DER, 207' right of centerline, up to 87' AGL/278' MSL. **Rwy 36**, multiple trees beginning 1083' from DER, 210' right of centerline, up to 84' AGL/301' MSL. Multiple trees beginning 532' from DER, 43' left of centerline, up to 73' AGL/287' MSL.

MONROE, GA**MONROE-WALTON COUNTY (D73)**

TAKEOFF MINIMUMS AND (OBSTACLE)
DEPARTURE PROCEDURES
AMDT 1 08101 (FAA)

DEPARTURE PROCEDURE: **Rwy 3**, climb heading 035° to 1700 before proceeding on course.
NOTE: **Rwy 3**, trees beginning 587' from DER, 469' left of centerline, up to 100' AGL/939' MSL. Trees beginning 1003' from DER, 104' right of centerline, up to 100' AGL/929' MSL. **Rwy 21**, trees beginning 878' from DER, 388' left of centerline, up to 100' AGL/989' MSL. Trees beginning 988' from DER, 694' right of centerline, up to 100' AGL/999' MSL.

15008

**TAKEOFF MINIMUMS, (OBSTACLE) DEPARTURE PROCEDURES, AND
DIVERSE VECTOR AREA (RADAR VECTORS)**

08 JAN 2015 to 05 FEB 2015

08 JAN 2015 to 05 FEB 2015

TAKEOFF MINIMUMS, (OBSTACLE) DEPARTURE PROCEDURES, AND DIVERSE VECTOR AREA (RADAR VECTORS)

15008

MONROEVILLE, AL

MONROE COUNTY (MVC)
TAKEOFF MINIMUMS AND (OBSTACLE)
DEPARTURE PROCEDURES
ORIG 07354 (FAA)

NOTE: Trees beginning 1085' from DER, 274' left of centerline, up to 100' AGL/529' MSL. Trees beginning 488' from DER, 291' right of centerline, up to 100' AGL/529' MSL. **Rwy 21**, vehicle on road 750' from DER, 661' right of centerline, 15' AGL/434' MSL. Trees abeam DER, 376' right of centerline, up to 56' AGL/475' MSL. Trees beginning 219' from DER, 224' left of centerline, up to 56' AGL/474' MSL.

MONTEZUMA, GA

DR. C.P. SAVAGE SR. (53A)
TAKEOFF MINIMUMS AND (OBSTACLE)
DEPARTURE PROCEDURES
ORIG 03191 (FAA)

TAKEOFF MINIMUMS: **Rwy 36**, 300-1.
NOTE: **Rwy 18**, power line 1050' from DER, on centerline, 38' AGL/376' MSL. **Rwy 36**, trees 1212' from DER, 400' right of centerline, 92' AGL/428' MSL. Tower 3284' from DER, 1325' right of centerline, 201' AGL/600' MSL.

MONTGOMERY, AL

MONTGOMERY RGNL (DANNELLY FIELD)
(MGM)

TAKEOFF MINIMUMS AND (OBSTACLE)
DEPARTURE PROCEDURES
AMDT 2 12208 (FAA)

DEPARTURE PROCEDURE: **Rwy 10**, climb heading 097° to 1100 before proceeding on course.
NOTE: **Rwy 10**, trees beginning 1493' from DER, 808' right of centerline, up to 90' AGL/276' MSL. **Rwy 28**, trees beginning 1523' from DER, left and right of centerline, up to 75' AGL/316' MSL. **Rwy 3**, building 272' from DER, 549' left of centerline, 12' AGL/202' MSL. Hanger 426' from DER, 557' left of centerline, 20' AGL/210' MSL. Hanger 560' from DER, 560' left of centerline, 14' AGL/203' MSL. Hanger 670' from DER, 559' left of centerline, 14' AGL/203' MSL. Tree 1306' from DER, 318' right of centerline, 56' AGL/245' MSL. **Rwy 21**, fence 713' from DER, 295' left of centerline, 11' AGL/241' MSL. Tree 1830' from DER, 196' right of centerline, 62' AGL/302' MSL.

MOODY AFB (KVAD)

VALDOSTA, GA.
TAKEOFF MINIMUMS AND (OBSTACLE)
DEPARTURE PROCEDURES
AMDT 4, 15008

DEPARTURE PROCEDURE: **Rwy 36R**, 200-1½ or standard with minimum climb of 223 ft/NM to 700 or with standard minimums and a standard 200 ft per NM climb gradient, takeoff must occur no later than 1700' prior to departure end of runway. **Rwy 36L**, 300-1½ or standard with minimum climb of 254 ft/NM to 700.

TAKE-OFF OBSTACLES: **Rwy 36R**, terrain 1 NM from DER, 199' right of centerline, 120' AGL/ 409' MSL. **Rwy 36L**, C-130 tail 283' from DER, 450' left of centerline, 38' AGL/268' MSL. Terrain 1.1 NM from DER, 2075' left of centerline, 120' AGL/442' MSL. **Rwy 18R**, C-130 tail 72' from DER, 465' left of centerline, 38' AGL/252' MSL. C-130 tail 69' inward of DER, 170' right of centerline, 38' AGL/257' MSL. C-130 tail 19' inward of DER, 221' left of centerline, 38' AGL/256' MSL.

15008

TAKEOFF MINIMUMS, (OBSTACLE) DEPARTURE PROCEDURES, AND DIVERSE VECTOR AREA (RADAR VECTORS)

MOULTRIE, GA

MOULTRIE MUNI (MGR)
TAKEOFF MINIMUMS AND (OBSTACLE)
DEPARTURE PROCEDURES
AMDT 2 12320 (FAA)

NOTE: **Rwy 4**, trees beginning 17' from DER, 282' to 655' left of centerline, up to 100' AGL/385' MSL. Hedge 597' from DER, 290' right of centerline, 28' AGL/314' MSL. **Rwy 16**, trees beginning 780' from DER, 386' to 583' left of centerline up to 100' AGL/379' MSL. Tree 1413' from DER, 670' right of centerline, 100' AGL/379' MSL. **Rwy 22**, scrub 147' from DER, 100' left of centerline, 39' AGL/276' MSL. Tree 141' from DER, 488' left of centerline, 88' AGL/335' MSL. **Rwy 34**, trees beginning 16' from DER, 114' to 747' right of centerline, up to 100' AGL/392' MSL.

MUSCLE SHOALS, AL

NORTHWEST ALABAMA RGNL (MSL)
TAKEOFF MINIMUMS AND (OBSTACLE)
DEPARTURE PROCEDURES
AMDT 1 14093 (FAA)

TAKEOFF MINIMUMS: **Rwy 36**, 300-1½ or std. w/min. climb of 239' per NM to 800, or alternatively, with standard takeoff minimums and a normal 200' per NM climb gradient, takeoff must occur no later than 1900' prior to DER.

DEPARTURE PROCEDURE: **Rwy 18**, climb heading 184° to 1400 before proceeding on course.

NOTE: **Rwy 18**, tree 90' from DER, 306' left of centerline, 23' AGL/568' MSL. Trees beginning 42' from DER, 325' right of centerline, up to 98' AGL/617' MSL. Pole 1550' from DER, 151' left of centerline, 43' AGL/580' MSL. **Rwy 29**, trees beginning 981' from DER, 184' left of centerline, up to 100' AGL/630' MSL. Trees beginning 2727' from DER, 322' left of centerline, up to 97' AGL/627' MSL. Tower 31' from DER, 252' right of centerline, 558' MSL. Pole 839' from DER, 594' left of centerline, 39' AGL/569' MSL. **Rwy 36**, trees beginning 622' from DER, 89' left of centerline, up to 105' AGL/621' MSL. Trees beginning 196' from DER, 4' right of centerline, up to 73' AGL/598' MSL. Poles beginning 499' from DER, 320' left of centerline, up to 39' AGL/575' MSL. Poles beginning 420' from DER, 26' right of centerline, up to 32' AGL/569' MSL. Building 9' from DER, 437' right of centerline, 21' AGL/557' MSL. Communication tower 5329' from DER, 469' left of centerline, 161' AGL/698' MSL.

08 JAN 2015 to 05 FEB 2015

08 JAN 2015 to 05 FEB 2015

**TAKEOFF MINIMUMS, (OBSTACLE) DEPARTURE PROCEDURES, AND
DIVERSE VECTOR AREA (RADAR VECTORS)**

15008

NAHUNTA, GA**BRANTLEY COUNTY (4J1)****TAKEOFF MINIMUMS AND (OBSTACLE)
DEPARTURE PROCEDURES**

ORIG 12012 (FAA)

DEPARTURE PROCEDURE: **Rwy 19**, climb heading 192° to 1500 before turning right.

NOTE: **Rwy 1**, vehicles beginning 56' from DER, left and right of centerline, up to 17' AGL/101' MSL. Trees beginning 1105' from DER, right of centerline, up to 100' AGL/181' MSL. Transmission towers beginning 768' from DER, 174' right of centerline, up to 32' AGL/112' MSL. Terrain and trees 85' from DER, 343' right of centerline, 17' AGL/92' MSL. Trees beginning 25' from DER, 24' left of centerline, up to 100' AGL/165' MSL. Transmission towers and buildings beginning 15' from DER, 160' left of centerline, up to 43' AGL/118' MSL. Utility pole 9' from DER, 280' left of centerline, 12' AGL/87' MSL. **Rwy 19**, vehicle on roadway 29' from DER, 260' left of centerline, 15' AGL/94' MSL. Trees beginning 5' from DER, 272' right of centerline, up to 100' AGL/144' MSL. Rising terrain and trees beginning 274' from DER, 229' right of centerline, up to 21' AGL/96' MSL. Trees beginning 939' from DER, 26' left of centerline, up to 100' AGL/132' MSL. Terrain 462' from DER, 581' left of centerline, 17' AGL/92' MSL.

OZARK, AL**BLACKWELL FIELD (71J)****TAKEOFF MINIMUMS AND (OBSTACLE)
DEPARTURE PROCEDURES**

AMDT 2 13178 (FAA)

TAKEOFF MINIMUMS: **Rwy 31**, 300-2 or std. w/ min. climb of 201' per NM to 700, or alternatively, with standard takeoff minimums and a normal 200' per NM climb gradient, takeoff must occur no later than 1100' prior to DER.

DEPARTURE PROCEDURE: **Rwy 31**, climb heading 305° to 800 before proceeding on course.

NOTE: **Rwy 13**, trees beginning at DER, 336' left of centerline, up to 86' AGL/404' MSL. Trees beginning 4' from DER, 83' right of centerline, up to 93' AGL/389' MSL. Trees beginning 604' from DER, left and right of centerline, up to 100' AGL/437' MSL. **Rwy 31**, terrain 10' from DER, 319' left of centerline, 370' MSL. Vehicles on road beginning at DER, 372' left of centerline, up to 15' AGL/404' MSL. Poles beginning 75' from DER, left and right of centerline, up to 45' AGL/426' MSL. Tower 151' from DER, 453' left of centerline, 53' AGL/427' MSL. Trees beginning 189' from DER, 314' left of centerline, up to 39' AGL/409' MSL. Trees beginning 250' from DER, 216' right of centerline, up to 100' AGL/420' MSL. Trees beginning 1064' from DER, left and right of centerline, up to 100' AGL/508' MSL. Tower 1.58 NM from DER, 1588' right of centerline, 168' AGL/600' MSL.

NASHVILLE, GA**BERRIEN COUNTY (4J2)****TAKEOFF MINIMUMS AND (OBSTACLE)
DEPARTURE PROCEDURES**

AMDT 1 14149 (FAA)

NOTE: **Rwy 10**, trees beginning abeam DER, 156' left of centerline, up to 100' AGL/349' MSL. Trees beginning 267' from DER, 249' right of centerline, up to 100' AGL/349' MSL. **Rwy 28**, trees beginning abeam DER, 157' right of centerline, up to 100' AGL/340' MSL. Trees beginning 377' from DER, 348' left of centerline, up to 100' AGL/355' MSL.

ONEONTA, AL**ROBBINS FIELD (20A)****TAKEOFF MINIMUMS AND (OBSTACLE)
DEPARTURE PROCEDURES**

ORIG 12152 (FAA)

DEPARTURE PROCEDURE: **Rwy 5**, climb heading 058° to 2000 before turning. **Rwy 23**, climb heading 250° to 2400 before turning.

NOTE: **Rwy 5**, trees abeam DER, left and right of centerline, up to 100' AGL/ 1229' MSL. **Rwy 23**, trees abeam DER, left and right of centerline, up to 100' AGL/ 1229' MSL.

PELL CITY, AL**ST CLAIR COUNTY (PLR)****TAKEOFF MINIMUMS AND (OBSTACLE)
DEPARTURE PROCEDURES**

AMDT 2 09351 (FAA)

TAKEOFF MINIMUMS: **Rwy 21**, 300-1or std. w/ min. climb of 312' per NM to 800.DEPARTURE PROCEDURE: **Rwy 21**, climb heading 205° to 1000 before turning east.

NOTE: **Rwy 3**, multiple trees and beginning 60' from DER, 311' left of centerline, up to 100' AGL/567' MSL. Multiple trees beginning 221' from DER, 34' right of centerline, up to 100' AGL/572' MSL. Windssock 221' from DER, 549' right of centerline, 9' AGL/505' MSL. **Rwy 21**, multiple trees beginning 328' from DER, 260' left of centerline, up to 100' AGL/679' MSL. Multiple trees beginning 498' from DER, 193' right of centerline, up to 100' AGL/592' MSL. Multiple poles beginning 230' from DER, 473' left of centerline, up to 25' AGL/544' MSL. Vehicle on road 103' from DER, left to right of centerline, up to 15' AGL/502' MSL. Building 1029' from DER, 516' left of centerline, 13' AGL/532' MSL.

08 JAN 2015 to 05 FEB 2015

08 JAN 2015 to 05 FEB 2015

15008

**TAKEOFF MINIMUMS, (OBSTACLE) DEPARTURE PROCEDURES, AND
DIVERSE VECTOR AREA (RADAR VECTORS)**

TAKEOFF MINIMUMS, (OBSTACLE) DEPARTURE PROCEDURES, AND DIVERSE VECTOR AREA (RADAR VECTORS)

15008

PERRY, GA

PERRY-HOUSTON COUNTY (PXE) TAKEOFF MINIMUMS AND (OBSTACLE) DEPARTURE PROCEDURES

ORIG 07354 (FAA)

TAKEOFF MINIMUMS: **Rwy 36**, std. w/ min. climb of 230' per NM to 1200 or 900-2½ for climb in visual conditions.

DEPARTURE PROCEDURE: **Rwy 36**, for climb in visual conditions: cross Perry-Houston County Airport at or above 1200 MSL before proceeding on course.

NOTE: **Rwy 18**, vehicles on roadway beginning 30' from DER, 389' right of centerline, up to 15' AGL/414' MSL. Trees and pylons beginning 133' from DER, 317' right of centerline, up to 72' AGL/461' MSL. Trees beginning 1127' from DER, 152' left of centerline, up to 100' AGL/519' MSL. **Rwy 36**, trees left and right of centerline beginning 2806' from DER, up to 100' AGL/529' MSL.

PINE MOUNTAIN, GA

HARRIS COUNTY (PIM) TAKEOFF MINIMUMS AND (OBSTACLE) DEPARTURE PROCEDURES

AMDT 1 10322 (FAA)

TAKEOFF MINIMUMS: **Rwy 9**, std. w/ min. climb of 233' per NM to 1800 or 1100-2½ for climb in visual conditions.

DEPARTURE PROCEDURE: **Rwy 9**, climbing left turn heading 360° to 2400 before turning east or for climb in visual conditions cross Harris County airport at or above 1900 before proceeding on course.

NOTE: **Rwy 9**, terrain and trees beginning at DER, left and right of centerline, up to 100' AGL/1039' MSL.

Rwy 27, terrain and trees beginning 55' from DER, left and right of centerline, up to 115' AGL/1015' MSL.

PRATTVILLE, AL

PRATTVILLE-GROUBY FIELD (1A9) TAKEOFF MINIMUMS AND (OBSTACLE) DEPARTURE PROCEDURES

AMDT 1 11349 (FAA)

TAKEOFF MINIMUMS: **Rwy 27**, 400-2½ or std. w/min. climb of 550' per NM to 800.

DEPARTURE PROCEDURE: **Rwy 9**, climb heading 089° to 800 before turning. **Rwy 27**, climb heading 269° to 800 before turning.

NOTE: **Rwy 9**, trees beginning 216' from DER, 44' left of centerline, up to 100' AGL/315' MSL. Trees beginning 489' from DER, 87' right of centerline, up to 100' AGL/290' MSL. **Rwy 27**, trees beginning 157' from DER, 64' left of centerline, up to 100' AGL/510' MSL. Trees beginning 235' from DER, 101' right of centerline, up to 100' AGL/605' MSL. Terrain beginning 3410' from DER, 241' right of centerline, 315' MSL. Terrain beginning 4827' from DER, 4' left of centerline, 414' MSL.

QUITMAN, GA

QUITMAN BROOKS COUNTY (4J5) TAKEOFF MINIMUMS AND (OBSTACLE) DEPARTURE PROCEDURES

ORIG 11013 (FAA)

TAKEOFF MINIMUMS: **Rwy 10**, std. w/ min. climb of 290' per NM to 1000, or 1000-2½ for climb in visual conditions.

DEPARTURE PROCEDURE: **Rwy 10**, for climb in visual conditions: cross Quitman Brooks County Airport at or above 1300 before proceeding on course. **Rwy 28**, climb heading 279° until 700 before turning south.

NOTE: **Rwy 10**, numerous trees beginning 363' from DER, 248' right of centerline, up to 94' AGL/278' MSL. Multiple utility poles and structures beginning 184' from DER, 146' right of centerline, up to 44' AGL/224' MSL. **Rwy 28**, numerous trees beginning 496' from DER, 342' right of centerline, up to 79' AGL/250' MSL. Numerous trees beginning 38' from DER, 219' left of centerline, up to 100' AGL/280' MSL.

REDSTONE AAF (KHUA)

REDSTONE ARSENAL, AL TAKEOFF MINIMUMS AND (OBSTACLE) DEPARTURE PROCEDURES

09043

Rwy 17, 500-3***Rwy 35****

* Or standard with minimum climb rate of 240/NM to 1500.

** Standard with a minimum climb rate of 240/NM to 1500.

DEPARTURE PROCEDURE: **Rwy 17**, climb rwy hdg to 1700 before proceeding on course. **Rwy 35**, climb rwy hdg to 1900 before proceeding on course. Cross DER at or above 22'.

TAKEOFF OBSTACLES: **Rwy 17**: Multiple buildings beginning 2.4 NM from DER, 3805' left of centerline, up to 482' AGL/1092' MSL.

REFORM, AL

NORTH PICKENS (3M8) TAKEOFF MINIMUMS AND (OBSTACLE) DEPARTURE PROCEDURES

AMDT 1 11349 (FAA)

TAKEOFF MINIMUMS: **Rwy 1**, 300-1 or std. w/min. climb of 270' per NM to 500. **Rwy 19**, 500-2 or std. w/min. climb of 499' per NM to 1000.

NOTE: **Rwy 1**, trees beginning at DER, 115' left of centerline, up to 40' AGL/399' MSL. Trees beginning at DER, 181' right of centerline, up to 40' AGL/280' MSL. Vehicles on roadway, 1447' from DER, on centerline, up to 15' AGL/275' MSL.

Rwy 19, trees beginning at DER, 108' left of centerline, up to 40' AGL/269' MSL. Trees and terrain beginning 15' from DER, 21' right of centerline, up to 40' AGL/269' MSL. Towers 1.2 NM from DER, 1851' right of centerline, up to 450' AGL/695' MSL.

08 JAN 2015 to 05 FEB 2015

08 JAN 2015 to 05 FEB 2015

15008

TAKEOFF MINIMUMS, (OBSTACLE) DEPARTURE PROCEDURES, AND DIVERSE VECTOR AREA (RADAR VECTORS)

TAKEOFF MINIMUMS, (OBSTACLE) DEPARTURE PROCEDURES, AND DIVERSE VECTOR AREA (RADAR VECTORS)

15008

REIDSVILLE, GA

SWINTON SMITH FLD AT REIDSVILLE
MUNI (RVJ)

TAKEOFF MINIMUMS AND (OBSTACLE)
DEPARTURE PROCEDURES
AMDT 1 12208 (FAA)

NOTE: **Rwy 11**, trees beginning abeam DER, 500' right of centerline, up to 100' AGL/299' MSL. Trees beginning 1180' from DER, on centerline, up to 100' AGL/309' MSL. Power lines beginning 2840' from DER, 1020' left of centerline, up to 100' AGL/319' MSL. **Rwy 29**, trees beginning abeam DER, left and right of centerline, up to 100' AGL/259' MSL. Trees beginning 1870' from DER, on centerline, up to 100' AGL/259' MSL.
DEPARTURE PROCEDURE: **Rwy 11**, climb on runway heading to 700 before turning left.

ROME, GA

RICHARD B. RUSSELL RGNL-J.H.
TOWERS FIELD (RMG)

TAKEOFF MINIMUMS AND (OBSTACLE)
DEPARTURE PROCEDURES
AMDT 3 06215 (FAA)

TAKEOFF MINIMUMS: **Rwy 1**, standard with minimum climb of 365' per NM to 2100, or 1500 - 2½ for climb in visual conditions. **Rwy 25**, standard with minimum climb of 430' per NM to 1900, or 1500 - 2½ for climb in visual conditions.

DEPARTURE PROCEDURE: **Rwys 1, 25**, for climb in visual conditions cross Richard B. Russell airport at or above 2000 MSL before proceeding on course. **Rwy 7**, climb heading 072° to 1400 before proceeding on course. **Rwy 19**, climb heading 187° to 1400 before proceeding on course.

NOTE: **Rwy 1**, tree 1557' from DER, 490' left of centerline, 42' AGL/671' MSL. Numerous trees beginning 4577' from DER, 250' left of centerline, up to 93' AGL/762' MSL. Tree 3650' from DER, 423' right of centerline, 78' AGL/727' MSL. **Rwy 7**, numerous trees beginning 103' from DER, 267' right of centerline, up to 70' AGL/689' MSL. Numerous trees beginning 38' from DER, 110' left of centerline, up to 72' AGL/609' MSL. Numerous trees beginning 929' from DER, 133' right of centerline, up to 76' AGL/685' MSL. Tree 2145' from DER, 63' right of centerline, 78' AGL/687' MSL. Numerous trees beginning 1716' from DER, 265' left of centerline, 92' AGL/691' MSL. **Rwy 19**, bush 91' from DER, 290' right of centerline, 3' AGL/642' MSL. Terrain 301' from DER, 342' right of centerline, 646' MSL. Tree 556' from DER, 602' right of centerline, 67' AGL/716' MSL. Tree 904' from DER, 134' left of centerline, 38' AGL/657' MSL. Tree 775' from DER, 501' left of centerline, 53' AGL/672' MSL. Tree 3025' from DER, 57' right of centerline, 88' AGL/717' MSL. Tree 2980' from DER, 70' left of centerline 86' AGL/715' MSL. Numerous trees beginning 2867' from DER, 569' left of centerline, up to 94' AGL/723' MSL. **Rwy 25**, bush 300' from DER, 328' right of centerline, 10' AGL/659' MSL. Numerous trees beginning 622' from DER, 252' right of centerline, up to 76' AGL/725' MSL. Road 528' from DER, 9' left of centerline, 663' AGL. Numerous trees beginning 547' from DER, 164' left of centerline, up to 86' AGL/735' MSL. Tree 1, 428' from DER, 27' left of centerline, 83' AGL/712' MSL. Tree 1,571' from DER, 35' right of centerline, 80' AGL/709' MSL. Tree 2344' from DER, 243' right of centerline, 97' AGL/726' MSL.

15008

TAKEOFF MINIMUMS, (OBSTACLE) DEPARTURE PROCEDURES, AND DIVERSE VECTOR AREA (RADAR VECTORS)

L26

SE-4

RUSSELLVILLE, AL

BILL PUGH FIELD (M22)

TAKEOFF MINIMUMS AND (OBSTACLE)
DEPARTURE PROCEDURES

ORIG-A 11125 (FAA)

TAKEOFF MINIMUMS: **Rwy 20**, std. w/ a min. climb of 451' per NM to 1500, or 400-2 w/ a min. climb of 321' per NM to 1600, or 1000-2½ for climb in visual conditions.
DEPARTURE PROCEDURE: **Rwy 20**, climb heading 018° to 1400 before proceeding on course. **Rwy 20**, climb heading 198° to 1300 before proceeding on course, or for climb in visual conditions: cross Bill Pugh Field at or above 1600 before proceeding on course.

NOTE: **Rwy 2**, trees beginning 592' from DER, 200' right of centerline, up to 100' AGL/839' MSL. Trees beginning 3598' from DER, 283' left of centerline, up to 100' AGL/839' MSL. **Rwy 20**, trees beginning 1228' from DER, 51' left of centerline, up to 100' AGL/1159' MSL. Trees beginning 1993' from DER, 380' right of centerline, up to 100' AGL/1159' MSL.

ST ELMO, AL

ST ELMO (2R5)

TAKEOFF MINIMUMS AND (OBSTACLE)
DEPARTURE PROCEDURES

ORIG 08045 (FAA)

DEPARTURE PROCEDURE: **Rwy 6**, climb heading 059° to 800 before proceeding on course.

NOTE: **Rwy 6**, trees 1499' from DER, on centerline, 45' AGL/174' MSL. **Rwy 24**, tree 1730' from DER, 716' left of centerline, 100' AGL/229' MSL. Trees 1076' from DER, on centerline, 34' AGL/164' MSL.

ST MARYS, GA

ST MARYS (4J6)

TAKEOFF MINIMUMS AND (OBSTACLE)
DEPARTURE PROCEDURES

AMDT 4 13010 (FAA)

TAKEOFF MINIMUMS: **Rwy 4**, NA-Restricted airspace.
DEPARTURE PROCEDURE: **Rwy 31**, climbing right turn heading 320° to 2100 before proceeding northwest bound.

NOTE: **Rwy 13**, trees beginning 129' from DER, 224' left of centerline, up to 94' AGL/117' MSL. Stack 4532' from DER, 369' left of centerline, 150' AGL/164' MSL. Pole 901' from DER, 296' left of centerline, 49' AGL/63' MSL. **Rwy 22**, buildings beginning 7' from DER, 31' left of centerline, up to 41' AGL/64' MSL. Poles beginning 455' from DER, 5' left of centerline, up to 35' AGL/58' MSL. Poles beginning 601' from DER, 14' right of centerline, up to 908' AGL/931' MSL. Trees beginning 309' from DER, 91' left of centerline, up to 70' AGL/93' MSL. Trees beginning 493' from DER, 29' right of centerline, up to 91' AGL/114' MSL. Trees beginning 1025' from DER, 20' left of centerline, up to 81' AGL/104' MSL. Trees beginning 1073' from DER, 2' right of centerline, up to 84' AGL/107' MSL. Trees beginning 2003' from DER, 65' left of centerline, up to 97' AGL/120' MSL. Trees beginning 2016' from DER, 79' right of centerline, up to 100' AGL/123' MSL. **Rwy 31**, trees and pole beginning 16' from DER, 327' right of centerline, up to 94' AGL/118' MSL. Trees beginning 588' from DER, 546' left of centerline, up to 63' AGL/ 86' MSL. Trees beginning 1674' from DER, 229' left of centerline, up to 97' AGL/120' MSL.

08 JAN 2015 to 05 FEB 2015

08 JAN 2015 to 05 FEB 2015

TAKEOFF MINIMUMS, (OBSTACLE) DEPARTURE PROCEDURES, AND DIVERSE VECTOR AREA (RADAR VECTORS)

15008

SANDERSVILLE, GA

KAOLIN FIELD (OKZ)

TAKEOFF MINIMUMS AND (OBSTACLE)

DEPARTURE PROCEDURES

AMDT 2 13346 (FAA)

DEPARTURE PROCEDURE: **Rwy 13**, climb heading 125° to 1000 before turning right.

NOTE: **Rwy 13**, trees beginning 20' from DER, 375' left of centerline, up to 77' AGL/506' MSL. Trees beginning 43' from DER, 511' right of centerline, up to 73' AGL/492' MSL. Trees beginning 1214' from DER, 194' left of centerline, up to 96' AGL/565' MSL. Trees beginning 1202' from DER, 400' right of centerline, up to 95' AGL/514' MSL. **Rwy 31**, trees beginning 101' from DER, 242' right of centerline, up to 81' AGL/440' MSL. Trees beginning 347' from DER, 300' left of centerline, up to 58' AGL/437' MSL. Trees beginning 2456' from DER, 341' right of centerline, up to 98' AGL/477' MSL.

SAVANNAH, GA

SAVANNAH/HILTON HEAD INTL (SAV)

TAKEOFF MINIMUMS AND (OBSTACLE)

DEPARTURE PROCEDURES

AMDT 6 09183 (FAA)

DEPARTURE PROCEDURE: **Rwy 1**, climb heading 006° to 600 before proceeding southwest. **Rwy 10**, climb heading 097° to 700 before proceeding southwest. **Rwy 19**, climb heading 186° to 1300 before turning right. **Rwy 28**, climb heading 277° to 1600 before turning left.

NOTE: **Rwy 1**, fence and antennas beginning 94' from DER, 416' right of centerline, up to 17' AGL/63' MSL. **Rwy 10**, trees beginning 199' from DER, 521' right of centerline, up to 90' AGL/114' MSL. **Rwy 19**, trees beginning 1504' from DER, 782' left of centerline up to 64' AGL/78' MSL. Trees beginning 864' from DER, 665' right of centerline, up to 57' AGL/71' MSL. **Rwy 28**, pole 937' from DER, 650' left of centerline, 33' AGL/47' MSL. Trees 1297' from DER, 772' right of centerline, up to 77' AGL/91' MSL.

SCOTTSBORO, AL

SCOTTSBORO MUNI-WORD FIELD (4A6)

TAKEOFF MINIMUMS AND (OBSTACLE)

DEPARTURE PROCEDURES

AMDT 1 13290 (FAA)

TAKEOFF MINIMUMS: **Rwy 4**, std. w/min. climb of 302' per NM to 2000 or 1400-2½ for climb in visual conditions. **Rwy 22**, std. w/min. climb of 400' per NM to 1900 or 1400-2½ for climb in visual conditions.

DEPARTURE PROCEDURE: **Rwy 4**, climb heading 040° to 2000 before proceeding on course or for climb in visual conditions: cross Scottsboro Muni-Word Field at or above 1900 MSL before proceeding on course.

Rwy 22, climb heading 220° to 1900 before proceeding on course or for climb in visual conditions: cross Scottsboro Muni-Word Field at or above 1900 MSL before proceeding on course.

NOTE: **Rwy 4**, pole 409' from DER, 302' left of centerline, 23' AGL/660' MSL. Terrain beginning 123' from DER, 546' left of centerline, up to 656' MSL. Terrain beginning 34' from DER, 206' from DER, 206' right of centerline, up to 633' MSL. **Rwy 22**, terrain beginning 3718' from DER, 1423' left of centerline, up to 751' MSL.

SELMA, AL

CRAIG FIELD (SEM)

TAKEOFF MINIMUMS AND (OBSTACLE)

DEPARTURE PROCEDURES

AMDT 2 07298 (FAA)

NOTE: **Rwy 15**, trees beginning 2440' from DER, 231' right of centerline, up to 73' AGL/232' MSL. Trees beginning 1687' from DER, 568' left of centerline, up to 61' AGL/220' MSL. **Rwy 33**, tree 1416' from DER, 607' right of centerline, 62' AGL/211' MSL. Trees beginning 885' from DER, 439' left of centerline, up to 68' AGL/207' MSL.

SWAINSBORO, GA

EAST GEORGIA REGIONAL (SBO)

TAKEOFF MINIMUMS AND (OBSTACLE)

DEPARTURE PROCEDURES

AMDT 2 12208 (FAA)

NOTE: **Rwy 14**, Multiple poles and trees beginning 110' from DER, 53' right of centerline, up to 99' AGL/388' MSL. Multiple poles and trees beginning 861' from DER, 45' right of centerline, up to 75' AGL/394' MSL. **Rwy 32**, Multiple trees beginning 3390' from DER, 29' left of centerline, up to 100' AGL/419' MSL. Multiple trees beginning 206' from DER, 210' right of centerline, up to 45' AGL/354' MSL.

SYLACAUGA, AL

MERKEL FIELD - SYLACAUGA MUNI (SCD)

TAKEOFF MINIMUMS AND (OBSTACLE)

DEPARTURE PROCEDURES

AMDT 3 14261 (FAA)

TAKEOFF MINIMUMS: **Rwy 9**, 300-1½ or std. w/min. climb of 308' per NM to 900. **Rwy 27**, 200-1½ or std. w/min. climb of 645' per NM to 800.

DEPARTURE PROCEDURE: **Rwy 9**, climb heading 079° to 2100 before turning right. **Rwy 27**, climb heading 259° to 1400 before turning right.

NOTE: **Rwy 9**, trees beginning 42' from DER, 261' right of centerline, up to 33' AGL/573' MSL. Multiple poles beginning 205' from DER, 340' right of centerline, up to 39' AGL/579' MSL. Vehicle on road 446' from DER, 456' right of centerline, 15' AGL/462' MSL. Trees beginning 774' from DER, 418' right of centerline, up to 69' AGL/609' MSL. Trees beginning 2435' from DER, 313' right of centerline, up to 63' AGL/613' MSL. **Rwy 27**, tree 32' from DER, 373' right of centerline, 3' AGL/583' MSL. Terrain 196' from DER, 400' right of centerline, 585' MSL. Pole 386' from DER, 592' right of centerline, 42' AGL/622' MSL. Vehicle on road beginning 425' from DER, 146' right of centerline, up to 15' AGL/618' MSL. Trees beginning 814' from DER, 93' right of centerline, up to 76' AGL/716' MSL. Terrain 1058' from DER, 568' right of centerline, 617' MSL. Trees beginning 4723' from DER, 531' right of centerline, up to 58' AGL/718' MSL. Trees beginning 18' from DER, 490' left of centerline, up to 36' AGL/616' MSL. Vehicle on road 84' from DER, 173' left of centerline, up to 15' AGL/581' MSL. Trees beginning 1070' from DER, 415' left of centerline, up to 81' AGL/621' MSL. Trees beginning 2309' from DER, 9' left of centerline, up to 66' AGL/646' MSL. Trees beginning 4059' from DER, 613' left of centerline, up to 77' AGL/737' MSL. Trees 1.1 NM from DER left and right of centerline, up to 100' AGL/738' MSL.

08 JAN 2015 to 05 FEB 2015

08 JAN 2015 to 05 FEB 2015

15008

TAKEOFF MINIMUMS, (OBSTACLE) DEPARTURE PROCEDURES, AND DIVERSE VECTOR AREA (RADAR VECTORS)

TAKEOFF MINIMUMS, (OBSTACLE) DEPARTURE PROCEDURES, AND DIVERSE VECTOR AREA (RADAR VECTORS)

SYLVANIA, GA

PLANTATION AIRPARK (JYL)
TAKEOFF MINIMUMS AND (OBSTACLE)
DEPARTURE PROCEDURES
ORIG 09043 (FAA)

NOTE: **Rwy 5**, trees and bushes beginning 1651' from DER, 203' left of centerline, up to 100' AGL/259' MSL. Trees beginning 1' from DER, 115' right of centerline, up to 100' AGL/289' MSL. **Rwy 15**, trees beginning 617' from DER, 660' left of centerline, up to 100' AGL/279' MSL. Trees beginning 1022' from DER, 640' right of centerline, up to 100' AGL/269' MSL. **Rwy 23**, trees beginning 15' from DER, 314' left of centerline, up to 100' AGL/269' MSL. Trees beginning 23' from DER, 364' right of centerline, up to 100' AGL/279' MSL. Vehicle on road 225' from DER, 87' right of centerline, 15' AGL/198' MSL. **Rwy 33**, trees beginning 1289' from DER, 461' left of centerline, up to 100' AGL/269' MSL. Trees beginning 107' from DER, 368' right of centerline, up to 100' MSL/279' MSL.

TALLADEGA, AL

TALLADEGA MUNI (ASN)
TAKEOFF MINIMUMS AND (OBSTACLE)
DEPARTURE PROCEDURES
AMDT 3 13178 (FAA)

TAKEOFF MINIMUMS: **Rwy 4**, std. w/min. climb of 207' per NM to 1300 or alternatively, with standard takeoff minimums and a normal 200' per NM climb gradient, takeoff must occur no later than 1700' prior to DER or 1400-2½ for climb in visual conditions.

DEPARTURE PROCEDURE: **Rwy 4**, climb heading 038° to 2100 before turning right, or for climb in visual conditions: cross Talladega Muni airport at or above 1800' MSL before proceeding on course. When executing VCOA, notify ATC prior to departure. **Rwy 22**, climb heading 233° to 1900 before proceeding on course.

NOTE: **Rwy 4**, multiple poles beginning 904' from DER, 418' right of centerline, up to 48' AGL/568' MSL. Numerous trees beginning 1811' from DER, 48' right of centerline, up to 72' AGL/612' MSL. Flag pole 3421' from DER, 306' right of centerline, 74' AGL/614' MSL. Buildings and trees beginning 1319' from DER, 394' left of centerline, up to 89' AGL/629' MSL. **Rwy 22**, tree 14' from DER, 413' right of centerline, 62' AGL/562' MSL. Trees beginning 7' from DER, 325' left of centerline, up to 26' AGL/526' MSL.

THOMASTON, GA

THOMASTON-UPSON COUNTY (OPN)
TAKEOFF MINIMUMS AND (OBSTACLE)
DEPARTURE PROCEDURES
AMDT 2 09295 (FAA)

TAKEOFF MINIMUMS: **Rwy 30**, std. w/ a min. climb of 268' per NM to 1800, or 1100-2½ for climb in visual conditions.

DEPARTURE PROCEDURE: **Rwy 30**, for climb in visual conditions: cross Thomaston-Upson County airport at or above 1700 before proceeding on course.

NOTE: **Rwy 30**, trees beginning 802' from DER, 444' right of centerline, up to 108' AGL/867' MSL. Power transmission lines 1625' from DER left to right of centerline 123' AGL/863' MSL. **Rwy 12**, trees beginning 2885' from DER, 510' left of centerline, up to 104' AGL/894' MSL.

THOMASVILLE, GA

THOMASVILLE RGNL (TVI)
TAKEOFF MINIMUMS AND (OBSTACLE)
DEPARTURE PROCEDURES
AMDT 1 07130 (FAA)

TAKEOFF MINIMUMS: **Rwy 4**, trees beginning 928' from DER, 594' left of centerline, 64' AGL/284' MSL. Numerous trees beginning 2205' from DER, 769' right of centerline, up to 85' AGL/355' MSL. **Rwy 22**, terrain 96' from DER, 462' right of centerline, 244' MSL. Building 132' from DER, 497' from centerline, up to 17' AGL/253' MSL. **Rwy 32**, trees beginning 4364' from DER, 558' right of centerline, up to 100' AGL/379' MSL.

THOMSON, GA

THOMSON-MCDUFFIE COUNTY (HQU)
TAKEOFF MINIMUMS AND (OBSTACLE)
DEPARTURE PROCEDURES
AMDT 1 14261 (FAA)

TAKEOFF MINIMUMS: **Rwy 28**, 200-1¼ or std. w/min. climb of 235' per NM to 700, or alternatively, with standard takeoff minimums and a normal 200' per NM climb gradient, takeoff must occur no later than 1900' prior to DER.

NOTE: **Rwy 10**, transmission line towers beginning 178' from DER, 414' left of centerline, up to 35' AGL/529' MSL. Pole and transmission line towers beginning 686' from DER, 415' right of centerline, up to 50' AGL/553' MSL. Transmission line towers beginning 1628' from DER, left and right of centerline, up to 90' AGL/588' MSL. **Rwy 28**, trees beginning 111' from DER, 402' right of centerline, up to 40' AGL/484' MSL. Trees beginning 2069' from DER, 120' right of centerline, up to 90' AGL/515' MSL. Trees beginning 2352' from DER, 299' left of centerline, up to 60' AGL/510' MSL. Trees beginning 1 NM from DER, 770' left of centerline, up to 100' AGL/629' MSL.

TIFTON, GA

HENRY TIFT MYERS (TMA)
TAKEOFF MINIMUMS AND (OBSTACLE)
DEPARTURE PROCEDURES
AMDT 5 01176 (FAA)

TAKEOFF MINIMUMS: **Rwy 33**, 400-2 or std. with a min. climb of 250' per NM to 900.

DEPARTURE PROCEDURE: **Rwy 28**, climb runway heading to 1200 before turning northbound.

NOTE: **Rwy 10**, tree, 192' from DER, 276' right of centerline, 70' AGL/382' MSL. Tree, 872' from DER, 296' left of centerline, 70' AGL/390' MSL. **Rwy 21**, tank, 3200' from DER, 670' left of centerline, 173' AGL/523' MSL. **Rwy 33**, tree, 384' from DER, 526' right of centerline, 90' AGL/411' MSL. Tree, 391' from DER, 405' right of centerline, 85' AGL/403' MSL.

TAKEOFF MINIMUMS, (OBSTACLE) DEPARTURE PROCEDURES, AND DIVERSE VECTOR AREA (RADAR VECTORS)


TAKEOFF MINIMUMS, (OBSTACLE) DEPARTURE PROCEDURES, AND


DIVERSE VECTOR AREA (RADAR VECTORS)

15008

TOCCOA, GA

TOCCOA RG LETOURNEAU FIELD (TOC)
 TAKEOFF MINIMUMS AND (OBSTACLE)
 DEPARTURE PROCEDURES

AMDT 3 07242 (FAA)

TAKEOFF MINIMUMS: **Rwy 2**, std. w/ min. climb of 430' per NM to 2600 or 1600-3 for climb in visual conditions. **Rwy 27**, std. w/ min. climb of 478' per NM to 2500 or 1600-3 for climb in visual conditions.

DEPARTURE PROCEDURE: **Rwys 2, 27**, for climb in visual conditions: cross Toccoa RG Letourneau Field Airport at or above 2600 MSL before proceeding on course. **Rwy 9**, climb heading 093° to 2000 before turning on course. **Rwy 20**, climb heading 206° to 2200 before turning on course.

NOTE: **Rwy 2**, tree 142' from DER, 458' right of centerline, 57' AGL/1032' MSL, scattered trees 71' from DER, 271' right of centerline, 57' AGL/989' MSL. **Rwy 9**, terrain 99' from DER, 177' right of centerline, 975' MSL, terrain 108' from DER, 126' left of centerline, 955' MSL. **Rwy 20**, pylon 376' from DER, 520' left of centerline, 23' AGL/1008' MSL. Multiple trees 589' from DER, 196' right of centerline, up to 66' AGL/1120' MSL, multiple trees 553' from DER, 62' left of centerline, up to 89' AGL/1107' MSL. **Rwy 27**, WLET 1420 1.1 NM from DER, 1818' left of centerline, 354' AGL/1364' MSL.

TROY, AL

N. KENNETH CAMPBELL FIELD AT TROY
 MUNI (TOI)

TAKEOFF MINIMUMS AND (OBSTACLE)
 DEPARTURE PROCEDURES

AMDT 6 14149 (FAA)

TAKEOFF MINIMUMS: **Rwy 14**, std. w/min. climb of 280' per NM to 1200 or 1600-2½ for climb in visual conditions. **Rwy 32**, std. w/min. climb of 281' per NM to 3200 or 1600-2½ for climb in visual conditions.

DEPARTURE PROCEDURE: **Rwy 7**, climb heading 073° to 1000 before turning left. **Rwy 14**, climb heading 147° to 1200 before turning right, for climb in visual conditions: cross Troy Muni at N. Kenneth Campbell field at or above 1800 MSL before proceeding on course. When executing VCOA, notify ATC prior to departure. **Rwy 25**, climb heading 254° to 1700 before turning right. **Rwy 32**, for climb in visual conditions: cross Troy Muni at N. Kenneth Campbell field at or above 1800 MSL before proceeding on course. When executing VCOA, notify ATC prior to departure.

NOTE: **Rwy 7**, sign 38' from DER, 425' right of centerline, 23' AGL/413' MSL. Trees beginning 297' from DER, 339' left of centerline, up to 80' AGL/471' MSL. Trees beginning 802' from DER, 455' right of centerline, up to 65' AGL/449' MSL. Trees beginning 1846' from DER, 363' left of centerline, up to 100' AGL/519' MSL. **Rwy 14**, trees beginning 52' from DER, 338' left of centerline, up to 66' AGL/431' MSL. Trees beginning 305' from DER, 330' right of centerline, up to 60' AGL/425' MSL. Trees beginning 548' from DER, 84' left of centerline, up to 100' AGL/465' MSL. Trees beginning 1176' from DER, 32' right of centerline, up to 95' AGL/449' MSL. Pole and trees beginning 1.1 NM from DER, left and right of centerline, up to 100' AGL/606' MSL. **Rwy 25**, trees beginning 31' from DER, 476' left of centerline, up to 100' AGL/447' MSL. Trees beginning 119' from DER, 420' right of centerline, up to 45' AGL/414' MSL. Trees beginning 1485' from DER, 761' right of centerline, up to 80' AGL/523' MSL. Tree 4066' from DER, 1355' left of centerline, 100' AGL/519' MSL. **Rwy 32**, terrain and brush beginning 148' from DER, left and right of centerline, up to 12' AGL/427' MSL. Terrain, brush, and trees beginning 673' from DER, left and right of centerline, up to 65' AGL/505' MSL. Pole, brush, and trees beginning 1979' from DER, left and right of centerline, up to 100' AGL/549' MSL.

08 JAN 2015 to 05 FEB 2015

08 JAN 2015 to 05 FEB 2015

15008


TAKEOFF MINIMUMS, (OBSTACLE) DEPARTURE PROCEDURES, AND


DIVERSE VECTOR AREA (RADAR VECTORS)

**TAKEOFF MINIMUMS, (OBSTACLE) DEPARTURE PROCEDURES, AND
DIVERSE VECTOR AREA (RADAR VECTORS)**

15008

TUSCALOOSA, AL

**TUSCALOOSA RGNL (TCL)
TAKEOFF MINIMUMS AND (OBSTACLE)
DEPARTURE PROCEDURES
AMDT 2A 11069 (FAA)**

TAKEOFF MINIMUMS: Rwy 4, 300-2 or std. w/min. climb of 271' per NM to 500. **Rwy 11**, 400-2½ or std. w/ a min climb of 217' per NM to 600, or alternatively, w/ standard takeoff minimums and a normal 200'/NM climb gradient, takeoff must occur no later than 1900' prior to DER. **Rwy 29**, 300-2½ or std. w/ a min. climb of 207' per NM to 600, or alternatively, w/ standard takeoff minimums and a normal 200'/NM climb gradient, takeoff must occur no later than 1400' prior to DER.

NOTE: Rwy 4, tower 4604' from DER, 344' left of centerline, 125' AGL/320' MSL. Trees beginning 1129' from DER, left and right of centerline, up to 103' AGL 263' MSL. Trees beginning 4525' from DER, left and right of centerline, up to 95' AGL/330' MSL. Trees beginning 1.3 NM from DER, 523' left of centerline, up to 100' AGL/409' MSL. Trees beginning 1621' from DER, 702' left of centerline, up to 70' AGL/409' MSL. Trees beginning 1061' from DER, 117' right of centerline, up to 76' AGL/225' MSL. **Rwy 11**, multiple trees beginning 562' from DER, 157' right of centerline, up to 78' AGL/251' MSL. multiple trees beginning 575' from DER, 62' left of centerline, up to 78' AGL/216' MSL. Trees beginning 576' from DER, 566' left of centerline, up to 58' AGL/197' MSL. Trees beginning 717' from DER, 480' right of centerline, up to 90' AGL/249' MSL, tower 2 NM from DER, 1178' left of centerline, 239' AGL/494' MSL. **Rwy 22**, trees beginning 423' from DER, 587' left of centerline, up to 63' AGL/203' MSL. Tree 1419' from DER, 506' right of centerline, 54' AGL/195' MSL. **Rwy 29**, light pole 684' from DER, 384' left of centerline 61' AGL/213' MSL. Trees beginning 839' from DER, 169' left of centerline up to 100' AGL/449' MSL. Trees beginning 381' from DER, 229' right of centerline, up to 89' AGL/258' MSL. Railroad 623' from DER, 157' right of centerline, 25' AGL/190' MSL. Vehicle on road 413' from DER, 136' right of centerline, 17' AGL/181' MSL.

TUSKEGEE, AL

**MOTON FIELD MUNI (06A)
TAKEOFF MINIMUMS AND (OBSTACLE)
DEPARTURE PROCEDURES
ORIG 09099 (FAA)**

NOTE: Rwy 13, trees beginning 5' from DER, 295' right of centerline, up to 100' AGL/389' MSL. Trees beginning 6' from DER, 304' left of centerline, up to 100' AGL/359' MSL. **Rwy 31**, trees beginning 12' from DER, 219' right of centerline, up to 100' AGL/359' MSL. Vehicle 464' from DER, 601' left of centerline, up to 15' AGL/284' MSL. Trees beginning 929' from DER, 568' left of centerline, up to 100' AGL/369' MSL.

VALDOSTA, GA

**VALDOSTA RGNL (VLD)
TAKEOFF MINIMUMS AND (OBSTACLE)
DEPARTURE PROCEDURES
AMDT 2 10322 (FAA)**

TAKEOFF MINIMUMS: Rwy 31, std. w/ min. climb of 220' per NM to 900 or 900-2½ for climb in visual conditions. **DEPARTURE PROCEDURE: Rwy 31**, for climb in visual conditions: cross Valdosta RGNL Airport at or above 1000 MSL before proceeding on course.

NOTE: Rwy 4, trees beginning 57' from DER, 227' right of centerline, up to 100' AGL/267' MSL. Trees beginning 1524' from DER, 92' left of centerline, up to 100' AGL/319' MSL. Vehicles on roadway beginning 845' from DER, 605' right of centerline, up to 15' AGL/214' MSL. **Rwy 13**, trees beginning 1316' from DER, 125' left of centerline, up to 100' AGL/299' MSL. Trees beginning 1803' from DER, 44' right of centerline, up to 100' AGL/289' MSL. **Rwy 17**, trees beginning 1794' from DER, 454' right of centerline, up to 100' AGL/309' MSL. Trees beginning 861' from DER, 110' left of centerline, up to 100' AGL/289' MSL. **Rwy 22**, railroad 722' from DER, 324' right of centerline, 23' AGL/220' MSL. Trees beginning 75' from DER, 159' right of centerline, up to 100' AGL/250' MSL. Trees beginning 70' from DER, 165' left of centerline, up to 100' AGL/241' MSL. Bush 244' from DER, 77' left of centerline, up to 16' AGL/206' MSL. **Rwy 31**, trees beginning 465' from DER, 277' right of centerline, up to 100' AGL/270' MSL. Trees beginning 600' from DER, 2' left of centerline, up to 100' AGL/309' MSL. **Rwy 35**, trees beginning 1653' from DER, 246' right of centerline, up to 100' AGL/256' MSL. Trees beginning 1669' from DER, 135' left of centerline, up to 100' AGL/289' MSL.

VERNON, AL

**LAMAR COUNTY (M55)
TAKEOFF MINIMUMS AND (OBSTACLE)
DEPARTURE PROCEDURES
AMDT 2 10266 (FAA)**

TAKEOFF MINIMUMS: Rwy 17, 300-1.

NOTE: Rwy 17, vehicle 2255' from DER, 72' left of centerline, 15' AGL/515' MSL. Trees beginning 382' from DER, 110' right of centerline, up to 100' AGL/579' MSL. Trees beginning 181' from DER, 168' left of centerline, up to 100' AGL/596' MSL. **Rwy 35**, trees beginning 26' from DER, 235' left of centerline, up to 100' AGL/559' MSL. Trees beginning 305' from DER, 328' right of centerline, up to 100' AGL/559' MSL.

08 JAN 2015 to 05 FEB 2015

08 JAN 2015 to 05 FEB 2015

15008

**TAKEOFF MINIMUMS, (OBSTACLE) DEPARTURE PROCEDURES, AND
DIVERSE VECTOR AREA (RADAR VECTORS)**

TAKEOFF MINIMUMS, (OBSTACLE) DEPARTURE PROCEDURES, AND DIVERSE VECTOR AREA (RADAR VECTORS)

15008

VIDALIA, GA

VIDALIA RGNL (VDI)

TAKEOFF MINIMUMS AND (OBSTACLE)
DEPARTURE PROCEDURES

AMDT 1 08045 (FAA)

TAKEOFF MINIMUMS: **Rwy 31**, 300-1½ or std. w/ min. climb of 251' per NM to 500, or alternatively, w/ standard takeoff minimums and a normal 200'/NM climb gradient, takeoff must occur no later than 2200' prior to DER.

NOTE: **Rwy 6**, trees beginning 324' from DER, 573' left of centerline, up to 48' AGL/307' MSL. **Rwy 13**, vehicles on roadway abeam DER, 350' right of centerline, 15' AGL/294' MSL. Trees beginning abeam DER, 400' right of centerline, up to 100' AGL/379' MSL. Trees beginning abeam DER, 350' left of centerline, up to 100' AGL/379' MSL. Trees beginning 847' from DER, on centerline, up to 100' AGL/369' MSL. **Rwy 24**, trees beginning 74' from DER, 520' left of centerline, up to 100' AGL/379' MSL. Trees beginning 8' from DER, 286' right of centerline, up to 100' AGL/379' MSL. **Rwy 31**, tank 5440' from DER, 1110' right of centerline, 155' AGL/443' MSL. Trees beginning abeam DER, 334' left of centerline, up to 100' AGL/369' MSL. Trees beginning 77' from DER, 364' right of centerline, up to 100' AGL/379' MSL.

WASHINGTON, GA

WASHINGTON-WILKES COUNTY (I1Y)

TAKEOFF MINIMUMS AND (OBSTACLE)
DEPARTURE PROCEDURES

ORIG 84061 (FAA)

TAKEOFF MINIMUMS: **Rwy 31**, 300-1 or std. with a min. climb of 270' per NM to 900.

WAYCROSS, GA

WAYCROSS-WARE COUNTY (AYS)

TAKEOFF MINIMUMS AND (OBSTACLE)
DEPARTURE PROCEDURES

AMDT 1 12320 (FAA)

TAKEOFF MINIMUMS: **Rwy 18**, 500-3 or std. w/min. climb of 230' per NM to 700.

NOTE: **Rwy 5**, trees beginning 11' from DER, left and right of centerline, up to 107' AGL/232' MSL. **Rwy 13**, trees beginning 11' from DER, left and right of centerline, up to 110' AGL/250' MSL. Pole 2393' from DER, 707' left of centerline, 66' AGL/211' MSL. Catenary 2559' from DER, 886' right of centerline, 71' AGL/216' MSL. **Rwy 18**, trees beginning 9' from DER, left and right of centerline, up to 55' AGL/236' MSL. Poles beginning 1061' from DER, 263' right of centerline, up to 63' AGL/213' MSL. Poles beginning 2440' from DER, 485' left of centerline, up to 51' AGL/206' MSL. **Rwy 23**, trees beginning 69' from DER, left and right of centerline, up to 109' AGL/249' MSL. **Rwy 31**, trees beginning 109' from DER, 364' left of centerline, up to 76' AGL/216' MSL. Trees beginning 2853' from DER, 226' right of centerline, up to 114' AGL/254' MSL. Navaid 56' from DER, 255' left of centerline, 44' AGL/184' MSL. Vehicle on road 109' from DER, 364' left of centerline, 140' AGL/155' MSL. **Rwy 36**, Reil 14' from DER, 153' left of centerline, 8' AGL/141' MSL. Poles beginning 935' from DER, 705' right of centerline, up to 34' AGL/179' MSL. Trees beginning 1638' from DER, right and left of centerline, up to 108' AGL/253' MSL.

15008

TAKEOFF MINIMUMS, (OBSTACLE) DEPARTURE PROCEDURES, AND DIVERSE VECTOR AREA (RADAR VECTORS)

WAYNESBORO, GA

BURKE COUNTY (BXG)

TAKEOFF MINIMUMS AND (OBSTACLE)
DEPARTURE PROCEDURES

ORIG 07242 (FAA)

NOTE: **Rwy 8**, trees beginning 485' from DER, 129' left of centerline, up to 100' AGL/440' MSL. Trees beginning 2228' from DER, 82' right of centerline, up to 100' AGL/409' MSL. **Rwy 26**, trees beginning 3053' from DER, 800' left of centerline, up to 100' AGL/ 439' MSL. Trees beginning 3843' from DER, 416' right of centerline, up to 100' AGL/429' MSL.

WETUMPKA, AL

WETUMPKA MUNI (08A)

TAKEOFF MINIMUMS AND (OBSTACLE)
DEPARTURE PROCEDURES

ORIG 10154 (FAA)

TAKEOFF MINIMUMS: **Rwys 18, 36**, NA-Environmental.

Rwy 27, 500-3 with minimum climb of 220' per NM to 800 or standard with minimum climb of 450' per NM to 600 or 1000-2½ for climb in visual conditions.

DEPARTURE PROCEDURE: **Rwy 27**, for climb in visual conditions cross Wetumpka Muni airport at or above 1000 before proceeding on course.

NOTE: **Rwy 9**, vehicle on roadway 471' from DER, 591' left of centerline, up to 15' AGL/214' MSL. Trees beginning 540' from DER, left and right of centerline, up to 100' AGL/299' MSL. **Rwy 27**, building 453' from DER, 434' right of centerline, 25' AGL/224' MSL. Vehicles on roadway 617' from DER, left and right of centerline, up to 15' AGL/214' MSL. Trees beginning 1314' from DER, 50' right of centerline, up to 100' AGL/309' MSL. Power lines beginning 2243' from DER, left and right of centerline, up to 88' AGL/322' MSL. Trees beginning 3454' from DER, left and right of centerline, up to 100' AGL/409' MSL. Rising terrain and trees beginning 1.7 miles from DER, left and right of centerline, up to 200' AGL/639' MSL.

08 JAN 2015 to 05 FEB 2015

08 JAN 2015 to 05 FEB 2015


TAKEOFF MINIMUMS, (OBSTACLE) DEPARTURE PROCEDURES, AND


DIVERSE VECTOR AREA (RADAR VECTORS)

15008

WINDER, GA**BARROW COUNTY (WDR)****TAKEOFF MINIMUMS AND (OBSTACLE)****DEPARTURE PROCEDURES****AMDT 1 10098 (FAA)**

TAKEOFF MINIMUMS: Rwy 23, std. w/ min. climb of 210' per NM to 3100 or 900-2½ for climb in visual conditions. **Rwy 31**, 300-1¼ or std. w/ min. climb of 205' per NM to 1300, or alternatively, w/ standard takeoff minimums and a normal 200'/NM climb gradient, takeoff must occur no later than 1300' prior to DER.

DEPARTURE PROCEDURE: Rwy 23, for climb in visual conditions: Cross Barrow County Airport at or above 1700' MSL before proceeding on course.

NOTE: Rwy 5, multiple trees beginning 6' from DER, 41' left of centerline, up to 48' AGL/982' MSL. Multiple trees beginning 43' from DER, 24' right of centerline, up to 74' AGL/973' MSL. **Rwy 13**, multiple trees/poles/signs beginning 835' from DER, 16' left of centerline, up to 74' AGL/983' MSL. Multiple trees/poles beginning 82' from DER, 8' right of centerline, up to 59' AGL/968' MSL. **Rwy 23**, multiple trees beginning 31' from DER, 344' left of centerline, up to 100' AGL/1041' MSL. Multiple trees beginning 487' from DER, 279' right of centerline, up to 100' AGL/1059' MSL. **Rwy 31**, multiple trees beginning 493' from DER, 30' left of centerline, up to 100' AGL/1139' MSL. Multiple trees beginning 63' from DER, 19' right of centerline, up to 57' AGL/1000' MSL. Localizer antenna 295' from DER, on centerline 8' AGL/943' MSL. Tree 7804' from DER, 1990' left of centerline, 100' AGL/1139' MSL.

08 JAN 2015 to 05 FEB 2015

08 JAN 2015 to 05 FEB 2015

15008


TAKEOFF MINIMUMS, (OBSTACLE) DEPARTURE PROCEDURES, AND


DIVERSE VECTOR AREA (RADAR VECTORS)