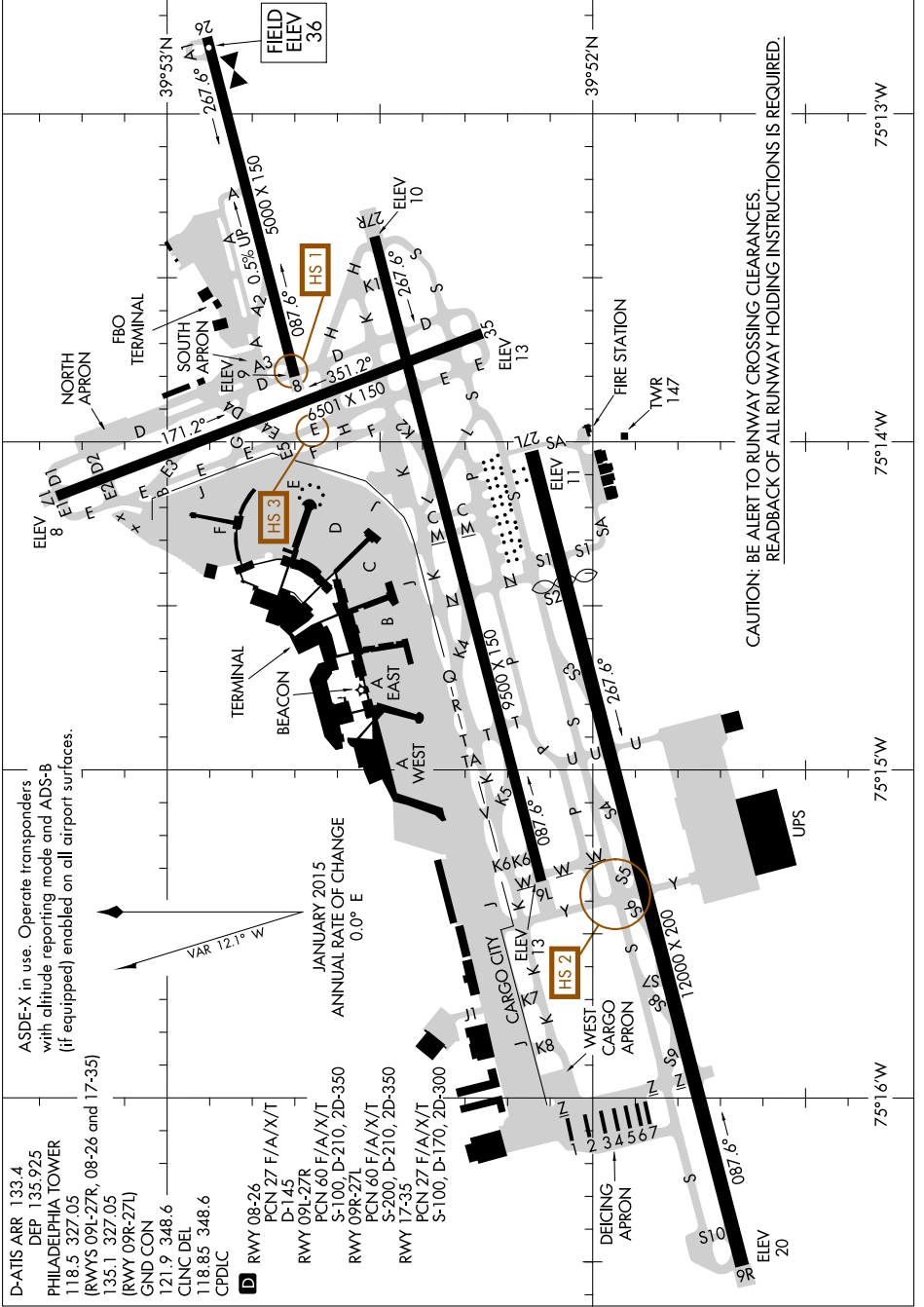


AIRPORT DIAGRAM

AL-320 (FAA)

PHILADELPHIA INTL (PHL)
PHILADELPHIA, PENNSYLVANIA

NE-4, 09 NOV 2017 to 07 DEC 2017



CAUTION: BE ALERT TO RUNWAY CROSSING CLEARANCES
READBACK OF ALL RUNWAY HOLDING INSTRUCTIONS IS REQUIRED.

NE-4, 09 NOV 2017 to 07 DEC 2017

AIRPORT DIAGRAM

PHILADELPHIA, PENNSYLVANIA
PHILADELPHIA INTL (PHL)

ASDE-X in use. Operate transponders with altitude reporting mode and ADS-B (if equipped) enabled on all airport surfaces.

D-ATIS ARR 133.4
DEP 135.925
PHILADELPHIA TOWER
118.5 327.05
[RWYS 09L-27R, 08-26 and 17-35]
135.1 327.05
[RWY 09R-27L]
GND CON
121.9 348.6
CLNC DEL
118.85 348.6
CPDLC

VAR 121° W

JANUARY 2015
ANNUAL RATE OF CHANGE
0.0° E

RWY 08-26
PCN 27 F/A/X/T
D-145
RWY 09L-27R
PCN 60 F/A/X/T
S-100, D-210, 2D-350
RWY 09R-27L
PCN 60 F/A/X/T
S-200, D-210, 2D-350
RWY 17-35
PCN 27 F/A/X/T
S-100, D-170, 2D-300

75°13'W

75°14'W

75°15'W

75°16'W

75°16'W

75°16'W